



SOUTH BETHLEHEM HOTEL - TEMPO BY HILTON

HIGH HOTELS, LTD.

WEST 3RD STREET
CITY OF BETHLEHEM
NORTHAMPTON COUNTY, PENNSYLVANIA

ARCHITECT'S PROJECT NO.: 24014

ISSUE DATE:

PROGRESS DOCUMENTS - NOT FOR CONSTRUCTION



An Affiliate of High Real Estate Group LLC

1853 William Penn Way ■ P.O. Box 10008 ■ Lancaster, PA 17605-0008
(717) 293-4446 ■ FAX (717) 293-4470 ■ www.highhotels.com
Hotel locations: Lancaster (2), York, Wilkes-Barre, Harrisburg (3),
Reading, PA; Annapolis, Lexington Park, MD; Middletown, NY (2); Ewing, NJ



An Affiliate of High Industries Inc.

1853 William Penn Way ■ P.O. Box 10008 ■ Lancaster, PA 17605-0008
(717) 291-2276 ■ FAX (717) 293-4451 ■ www.highconstruction.com



GREENFIELD ARCHITECTS LTD.

An Affiliate of High Real Estate Group LLC

1853 William Penn Way ■ P.O. Box 10008 ■ Lancaster, PA 17605-0008
(717) 293-4475 ■ FAX (717) 293-4499 ■ www.greenfieldarchitects.net

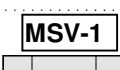
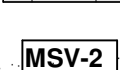




COVER SHEET

A-001

GREENFIELD ARCHITECTS, LTD.
 These plans are copyrighted and are subject to copyright protection as an architectural work under Section 102 of the Copyright Act, 17 U.S.C. as amended December 1990 and known as Architectural Copyright Protection Act of 1990. The protection includes but is not limited to the overall form as well as the arrangement and composition of spaces and elements of design. Under such protection, unauthorized use of these plans, or work represented, can legally result in the penalties provided.

Any reproduction of this document in part or whole without the express written permission of Greenfield Architects, Ltd. is strictly prohibited.

EXTERIOR FINISH LEGEND

-  MSV-1
LARGE FORMAT MASONRY VENEER - COLOR-1
-  MSV-2
LARGE FORMAT MASONRY VENEER - COLOR-2
-  BRV-1
BRICK VENEER
-  EIFS-1
EIFS SYSTEM - COLOR-1
-  EIFS-2
EIFS SYSTEM - COLOR-2
-  CS
CAST STONE - COLOR-1

PROGRESS PRINT
20 FEBRUARY 2025
Not For Construction

No.	Description	Date

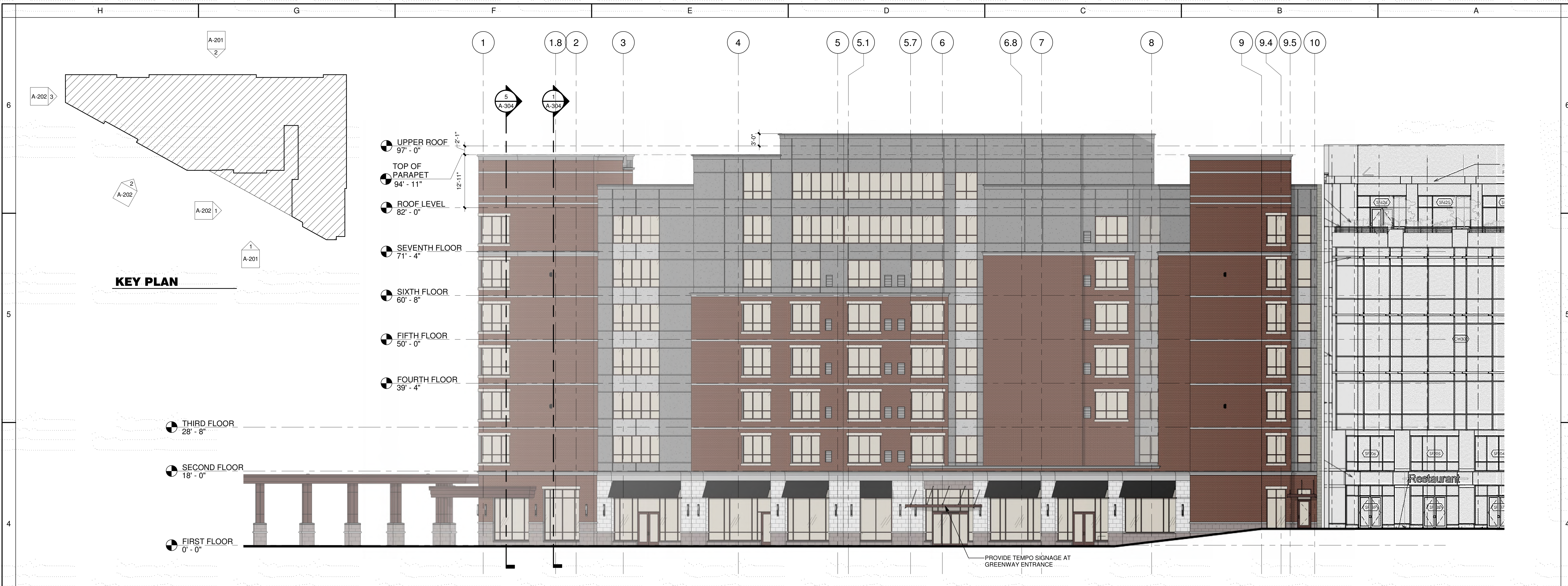
**SOUTH BETHLEHEM HOTEL
 TEMPO BY HILTON**

HIGH HOTELS, LTD.
 WEST 3RD STREET
 CITY OF BETHLEHEM
 NORTHAMPTON COUNTY, PENNSYLVANIA

Project Number 24014
 Date
 Drawn By SMC
 Checked By JS

ELEVATIONS

A-201



1 SOUTH ELEVATION
 3/32" = 1'-0"

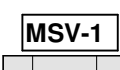
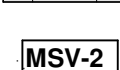






2 NORTH ELEVATION
 3/32" = 1'-0"

GREENFIELD ARCHITECTS, LTD.
 These plans are copyrighted and are subject to copyright protection as an architectural work under Section 102 of the Copyright Act, 17 U.S.C. as amended December 1990 and known as Architectural Copyright Protection Act of 1990. The protection includes but is not limited to the overall form as well as the arrangement and composition of spaces and elements of design. Under such protection, unauthorized use of these plans, or work represented, can legally result in the penalties provided.

Any reproduction of this document in part or whole without the express written permission of Greenfield Architects, Ltd. is strictly prohibited.

EXTERIOR FINISH LEGEND

-  **MSV-1**
LARGE FORMAT MASONRY VENEER - COLOR-1
-  **MSV-2**
LARGE FORMAT MASONRY VENEER - COLOR-2
-  **BRV-1**
BRICK VENEER
-  **EIFS-1**
EIFS SYSTEM - COLOR-1
-  **EIFS-2**
EIFS SYSTEM - COLOR-2
-  **CS**
CAST STONE - COLOR-1

PROGRESS PRINT
20 FEBRUARY 2025
Not For Construction

No.	Description	Date

**SOUTH BETHLEHEM HOTEL
 TEMPO BY HILTON**

HIGH HOTELS, LTD.
 WEST 3RD STREET
 CITY OF BETHLEHEM
 NORTHAMPTON COUNTY, PENNSYLVANIA

Project Number 24014

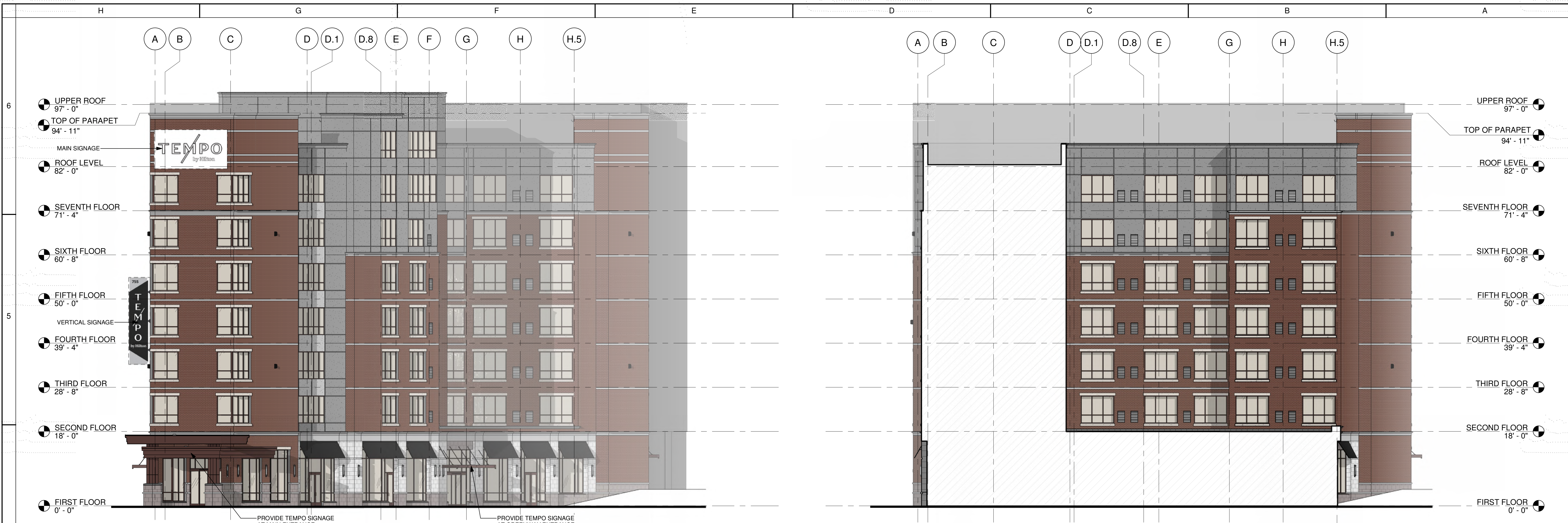
Date

Drawn By SMC

Checked By JS

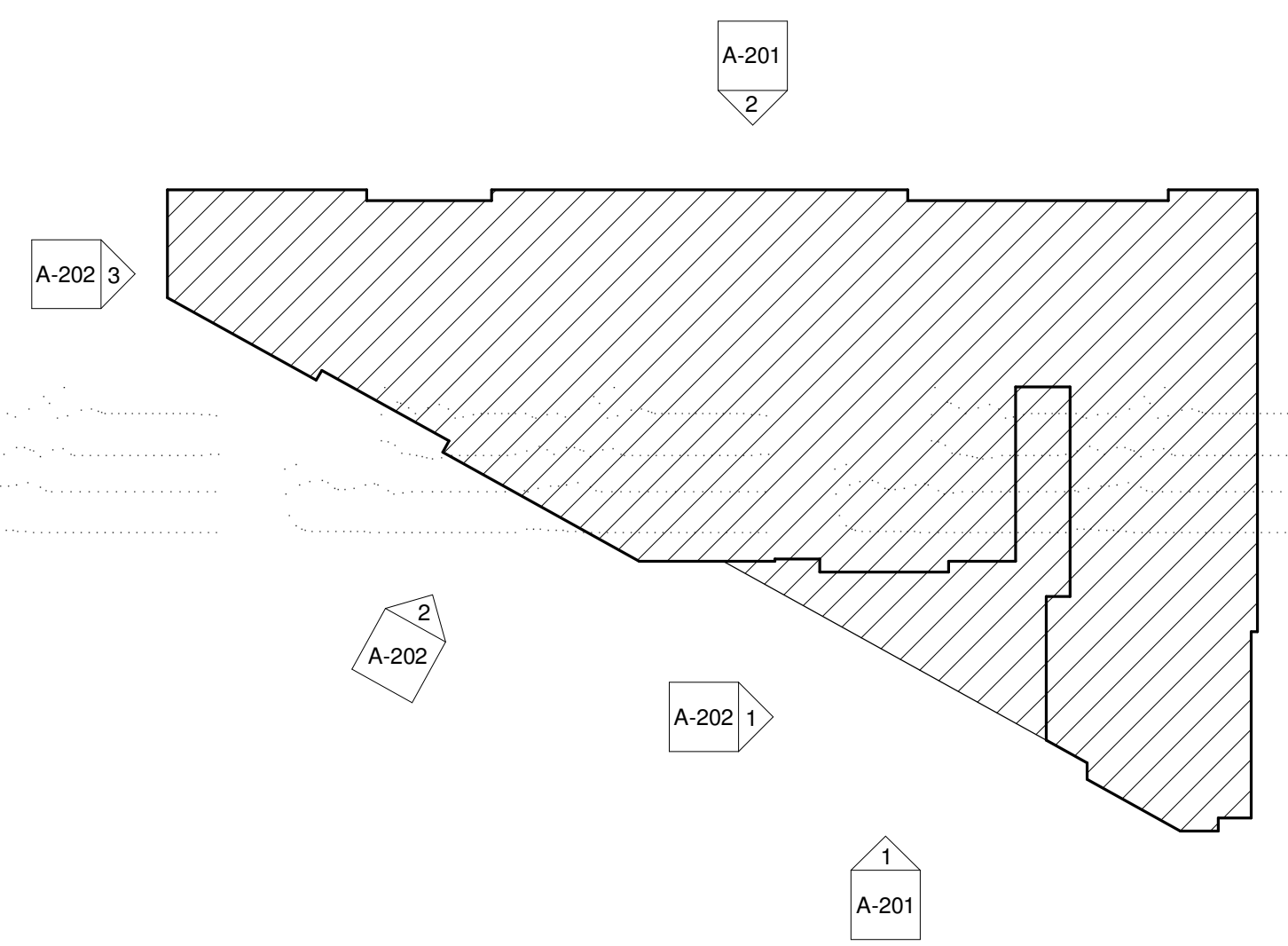
EXTERIOR ELEVATIONS

A-202

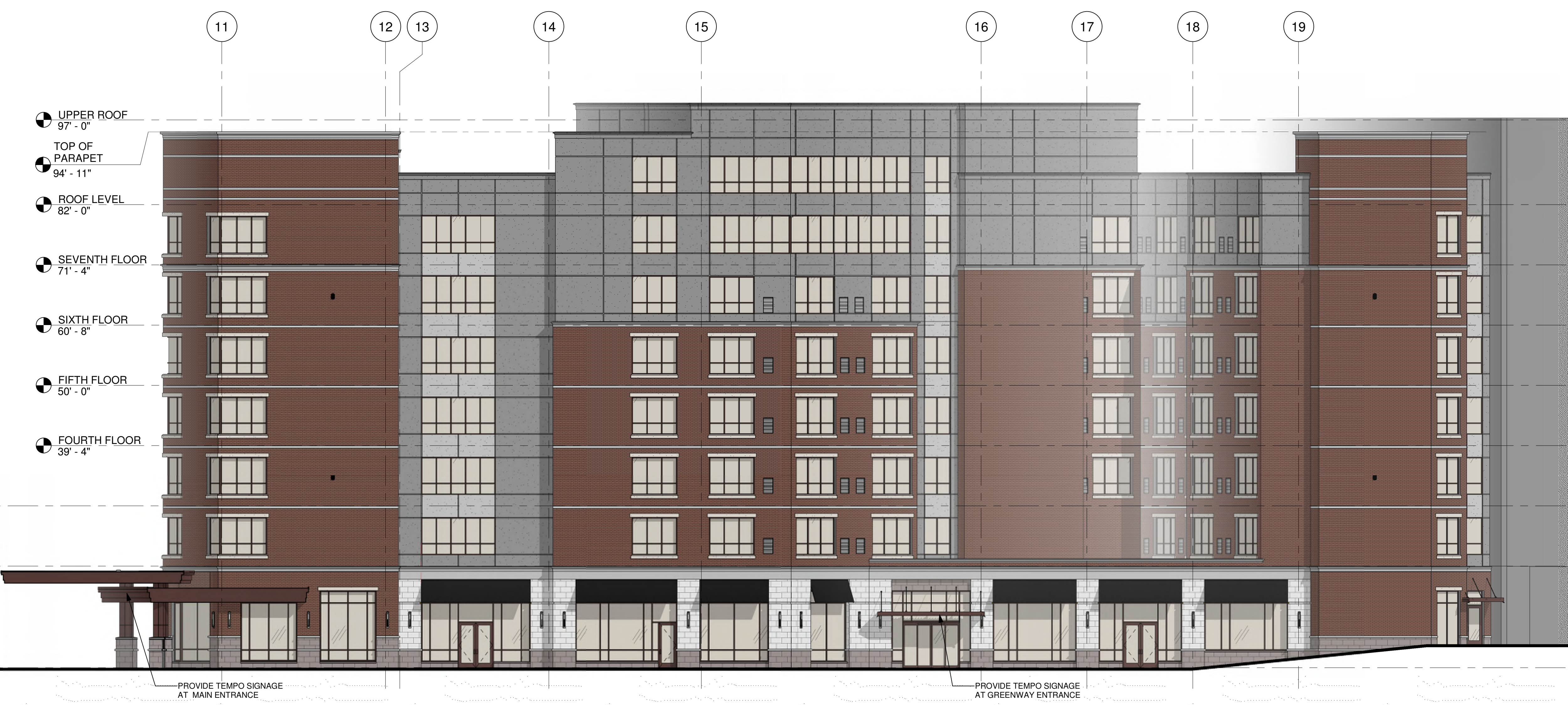


3 WEST ELEVATION - 01
 3/32" = 1'-0"

1 WEST ELEVATION - 02
 3/32" = 1'-0"



KEY PLAN

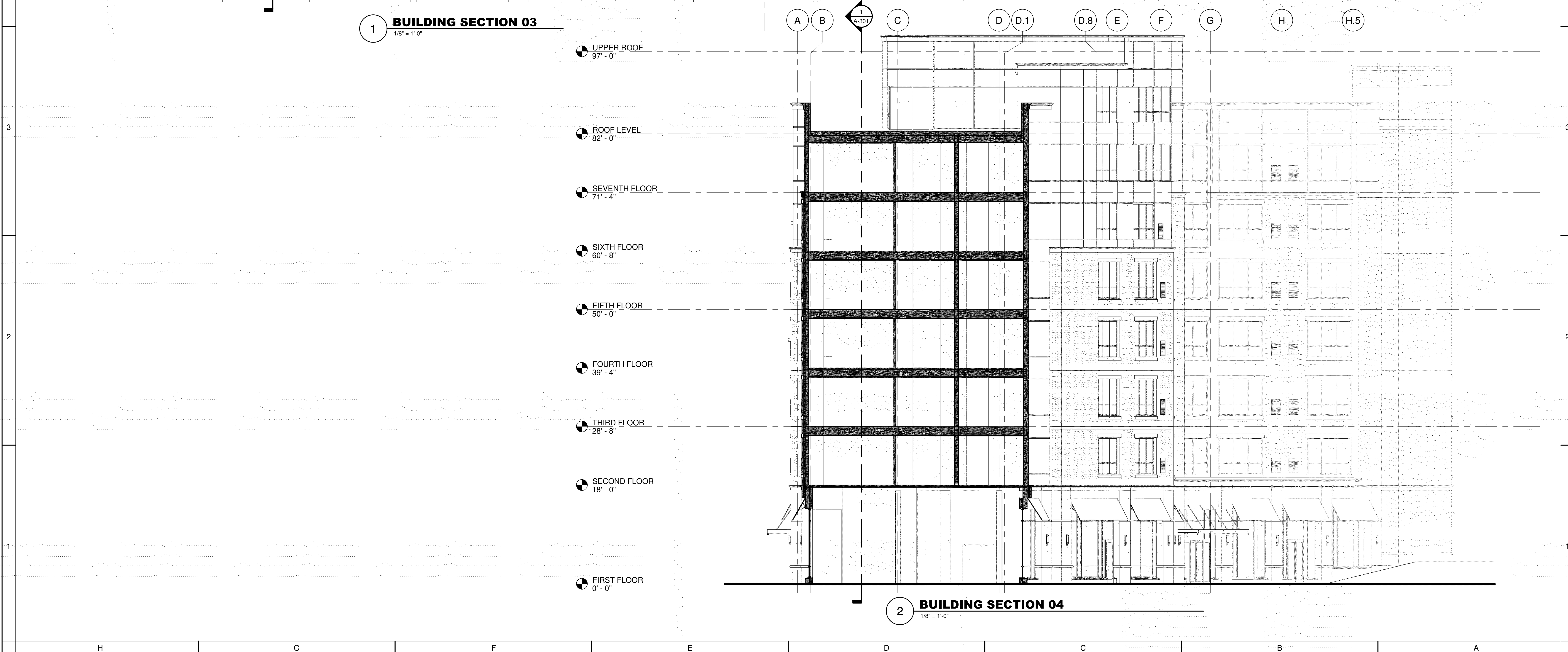


2 SOUTH / WEST ELEVATION
 3/32" = 1'-0"

GREENFIELD ARCHITECTS, LTD.
 These plans are copyrighted and are subject to copyright protection as an architectural work under Section 102 of the Copyright Act, 17 U.S.C. as amended December 1990 and known as Architectural Copyright Protection Act of 1990. The protection includes but is not limited to the overall form as well as the arrangement and composition of spaces and elements of design. Under such protection, unauthorized use of these plans, or work represented, can legally result in the penalties provided.
 Any reproduction of this document in part or whole without the express written permission of Greenfield Architects, Ltd. is strictly prohibited.



1 BUILDING SECTION 03
 1/8" = 1'-0"



2 BUILDING SECTION 04
 1/8" = 1'-0"

PROGRESS PRINT
20 FEBRUARY 2025
Not For Construction

No.	Description	Date

SOUTH BETHLEHEM HOTEL
TEMPO BY HILTON
HIGH HOTELS, LTD.
 WEST 3RD STREET
 CITY OF BETHLEHEM
 NORTHAMPTON COUNTY, PENNSYLVANIA

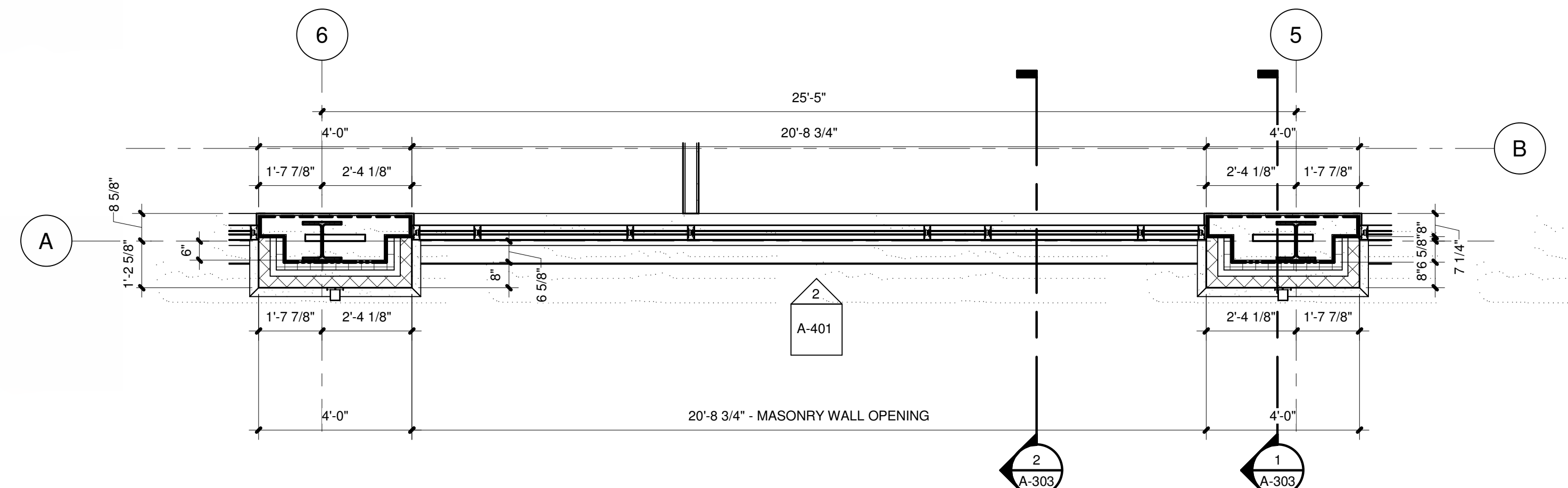
Project Number 24014
 Date
 Drawn By SMC
 Checked By JS

BUILDING SECTIONS
A-302

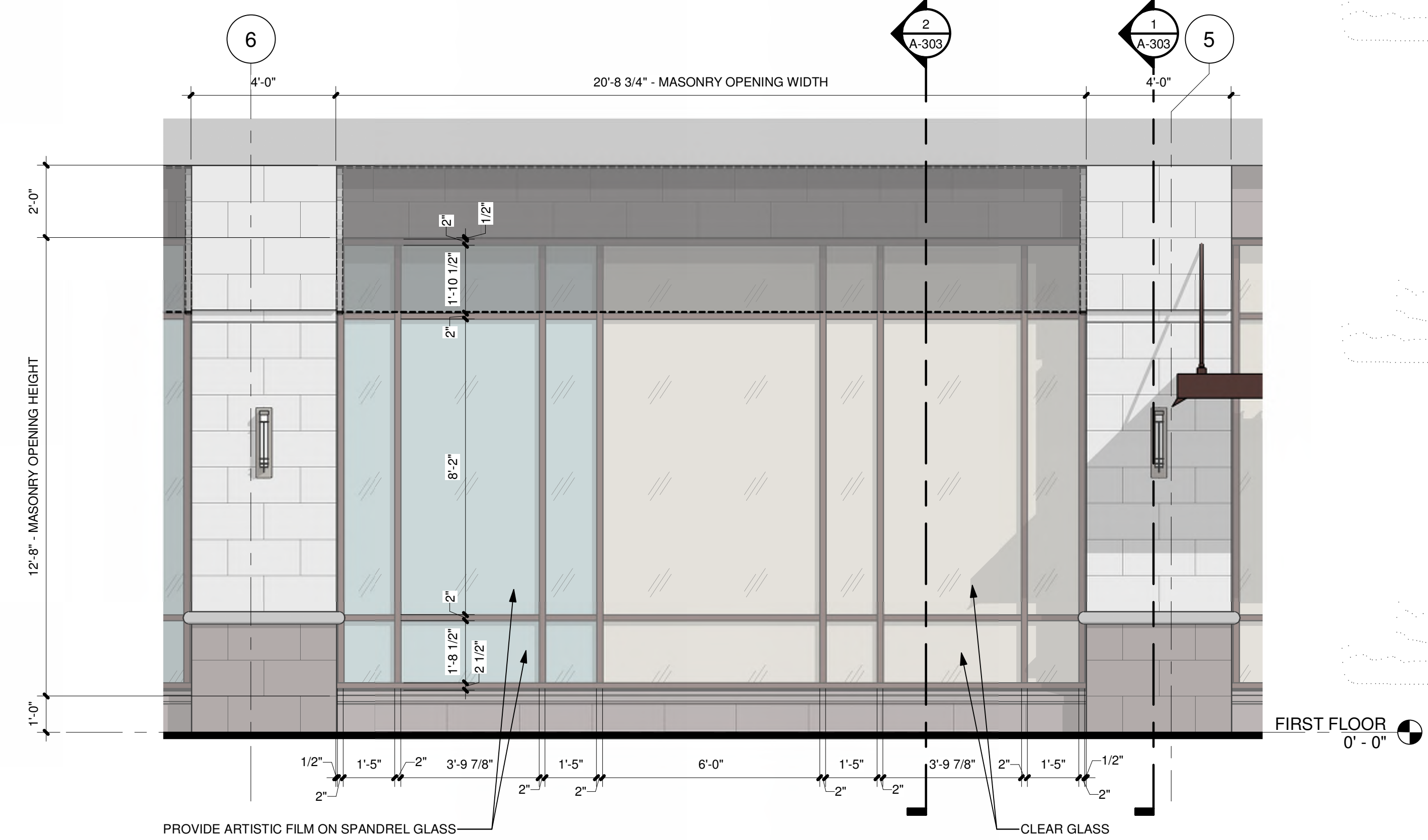
GREENFIELD ARCHITECTS, LTD.
 These plans are copyrighted and are subject to copyright protection as an architectural work under Section 102 of the Copyright Act, 17 U.S.C. as amended December 1990 and known as Architectural Copyright Protection Act of 1990. The protection includes but is not limited to the overall form as well as the arrangement and composition of spaces and elements of design. Under such protection, unauthorized use of these plans, or work represented, can legally result in the penalties provided.
 Any reproduction of this document in part or whole without the express written permission of Greenfield Architects, Ltd. is strictly prohibited.



EXAMPLES OF STOREFRONT ARTWORK



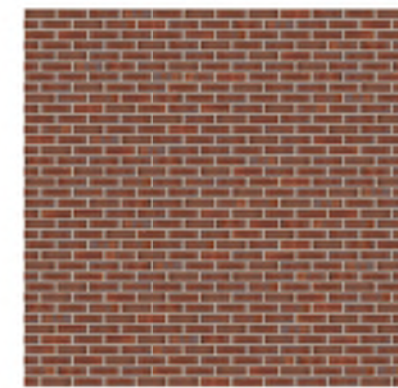
1 ENLARGE PLAN - TYPICAL STOREFRONT
 3/8" = 1'-0"



2 ENLARGE ELEVATION - TYPICAL STOREFRONT
 3/8" = 1'-0"



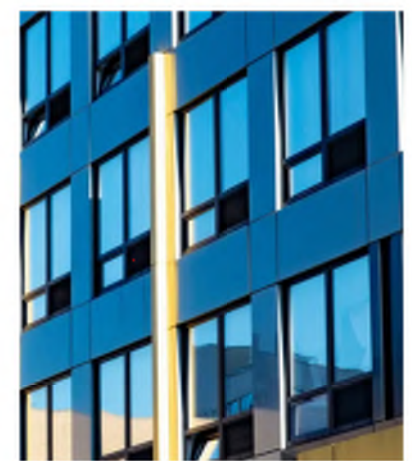
Storefront
 Basis-of-Design: YKK YES 45 FT storefront system with Guardian SunGuard SNX 62/57 Low-E crystal gray glazing, dark bronze finish.



Brick
 Basis-of-Design: Glen-Gery modular Rockbridge brick.



Large format Masonry Veneer
 Basis-of-Design: 12'x 24'x4" RockCast smooth face masonry veneer. Dark color- Smokehouse. Light color- Crystal White.



Windows
 Basis-of-Design: Intus Supera 74, CW polymer window with Guardian SunGuard SNX 62/57 Low-E ultra clear center set glazing, Dark bronze finish.

CAST STONE
 Basis-of-Design: RockCast smooth. Color - Crystal White

Awnings
 Awnings at first floor storefront windows to be fabric awnings on aluminum frames with open ends.



Uplighting
 Basis-of-Design: Razer RD by Beta Calco, bronze metallic finish.

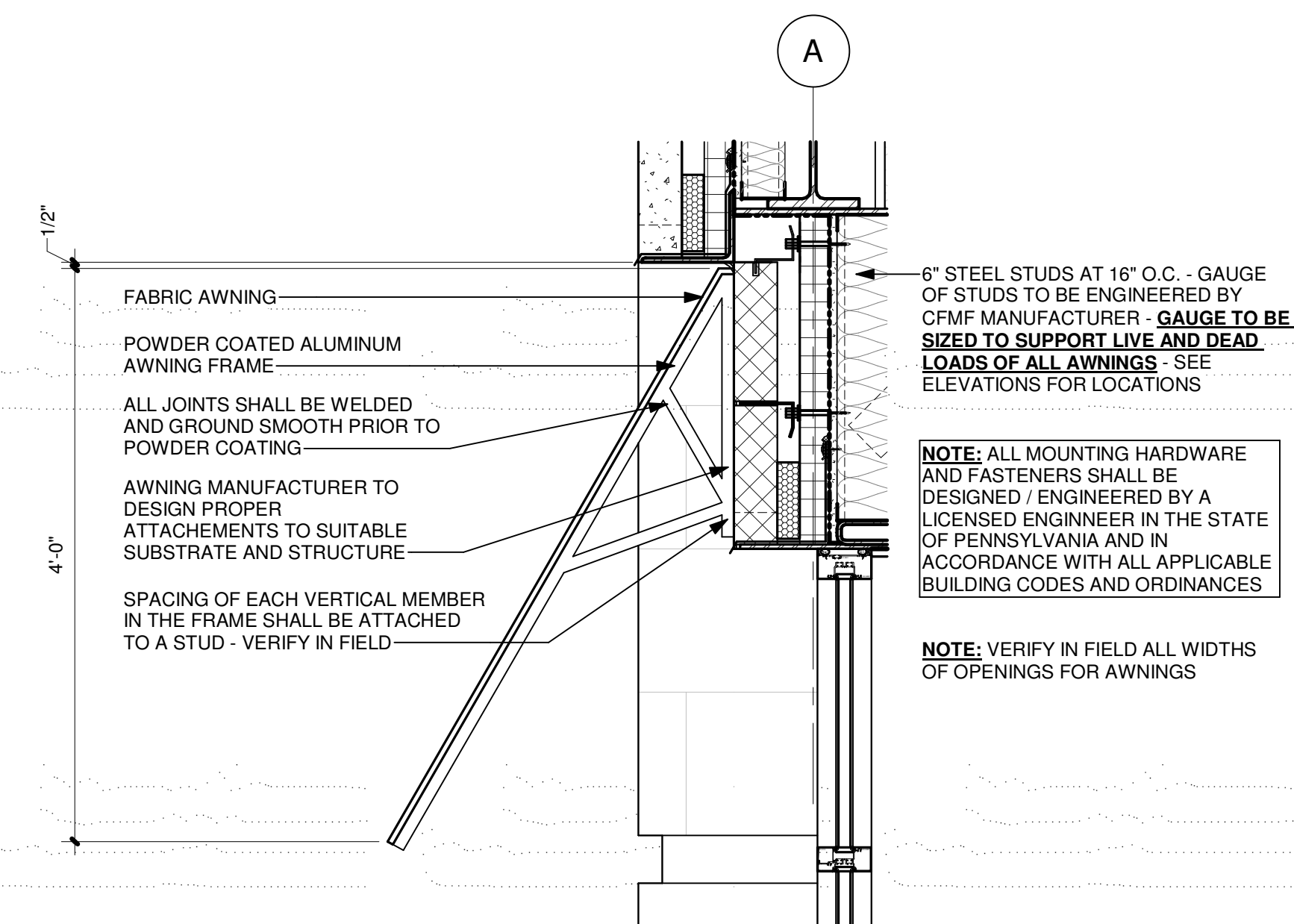


Wall mounted light fixtures
 Basis-of-Design: 22499 Synergy wall mounted light by Ultralights, cast bronze finish



Entry Canopies
 Basis-of-Design: For the canopies at the side entry off of Third Street, the Entry off of the Greenway and at the southeast stair tower is Super Lumideck canopy by Mapes.

Porte Cochere/ Main Entry Canopy
 The Porte Cochere at the front entry will be constructed out of steel framing and clad with aluminum composite panels. The columns will have a masonry veneer base to match the base of the building. The cantilevered main entry canopy will also be constructed out of steel framing and clad with aluminum composite panels.



3 AWNING DETAIL
 1" = 1'-0"

PROGRESS PRINT
20 FEBRUARY 2025
Not For Construction

No.	Description	Date

SOUTH BETHLEHEM HOTEL
TEMPO BY HILTON
HIGH HOTELS, LTD.
 WEST 3RD STREET
 CITY OF BETHLEHEM
 NORTHAMPTON COUNTY, PENNSYLVANIA

Project Number 24014
 Date
 Drawn By SMC
 Checked By JS

STOREFRONT PLAN AND ELEVATION, AWNING DETAIL, AND ARTWORK EXAMPLES
A-401