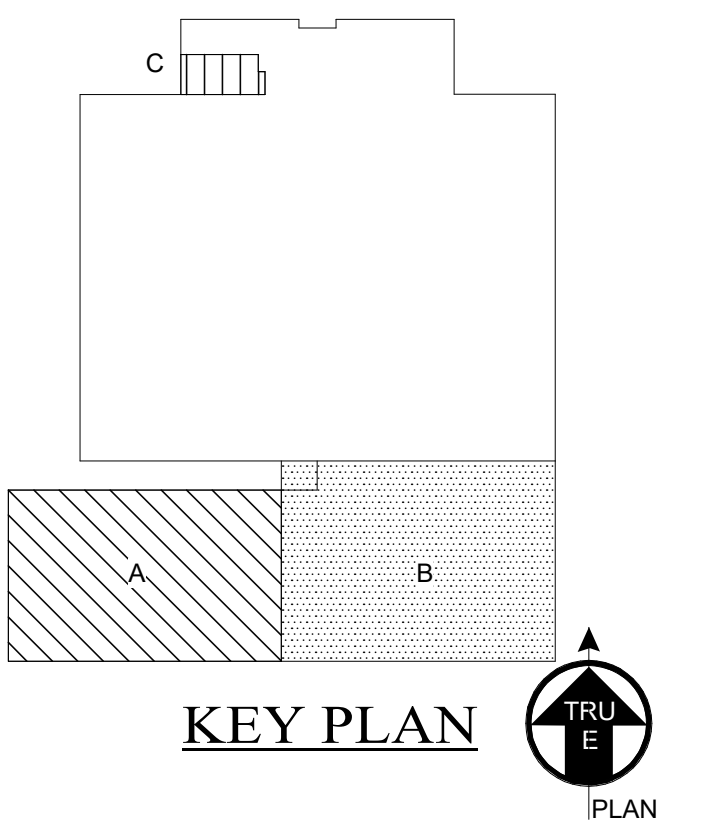


Progress Set 11/6/2025



COPYRIGHT:
 HIGHLAND ASSOCIATES, LTD. ARCHITECTURE, ENGINEERING, INTERIOR DESIGN 2025. © SHALL BE PROTECTED BY APPLICABLE FEDERAL, STATE AND LOCAL LAWS. ALL RIGHTS RESERVED. NO PART OF THIS DRAWING, INCLUDING ANY PHOTOGRAPHS, SHALL BE REPRODUCED OR TRANSMITTED IN ANY FORM OR BY ANY MEANS, ELECTRONIC OR MECHANICAL, INCLUDING PHOTOCOPYING, RECORDING, OR BY ANY INFORMATION STORAGE AND RETRIEVAL SYSTEM, WITHOUT THE PRIOR WRITTEN PERMISSION OF HIGHLAND ASSOCIATES, LTD. ARCHITECTURE, ENGINEERING, INTERIOR DESIGN 2025. © VIOLATION OF THE LAW AND IS PROHIBITED.

UNAUTHORIZED DOCUMENT USE:
 ANY REPRODUCTION OF THIS DOCUMENT FOR ANY PURPOSE, INCLUDING FOR CONSTRUCTION OR INSTALLATION OF THE WORK, WITHOUT THE PRIOR WRITTEN PERMISSION OF HIGHLAND ASSOCIATES, LTD. ARCHITECTURE, ENGINEERING, INTERIOR DESIGN 2025. © VIOLATION OF THE LAW AND IS PROHIBITED.

PROJECT TITLE:

Steel Ice Center
 320 E. 1st. St.
 Bethlehem, PA 18015

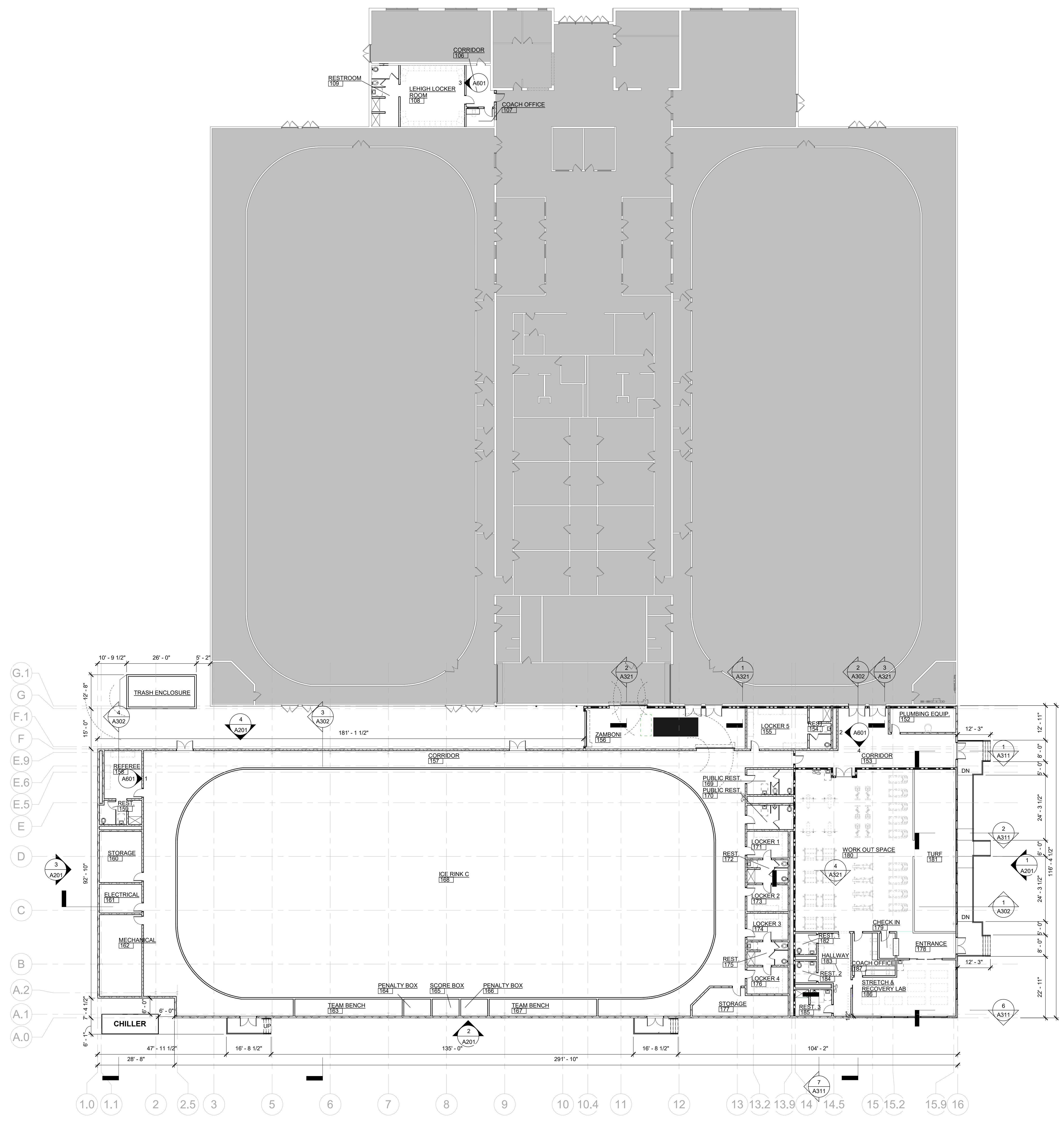
STEEL ICE EXPANSION

SEALS:

DRAWING TITLE:
CONSTRUCTION PLAN - LEVEL 1

DRAWN BY: Author	CHECKED BY: Author
DATE: 7/3/2025	PROJECT NO.: 2025-196

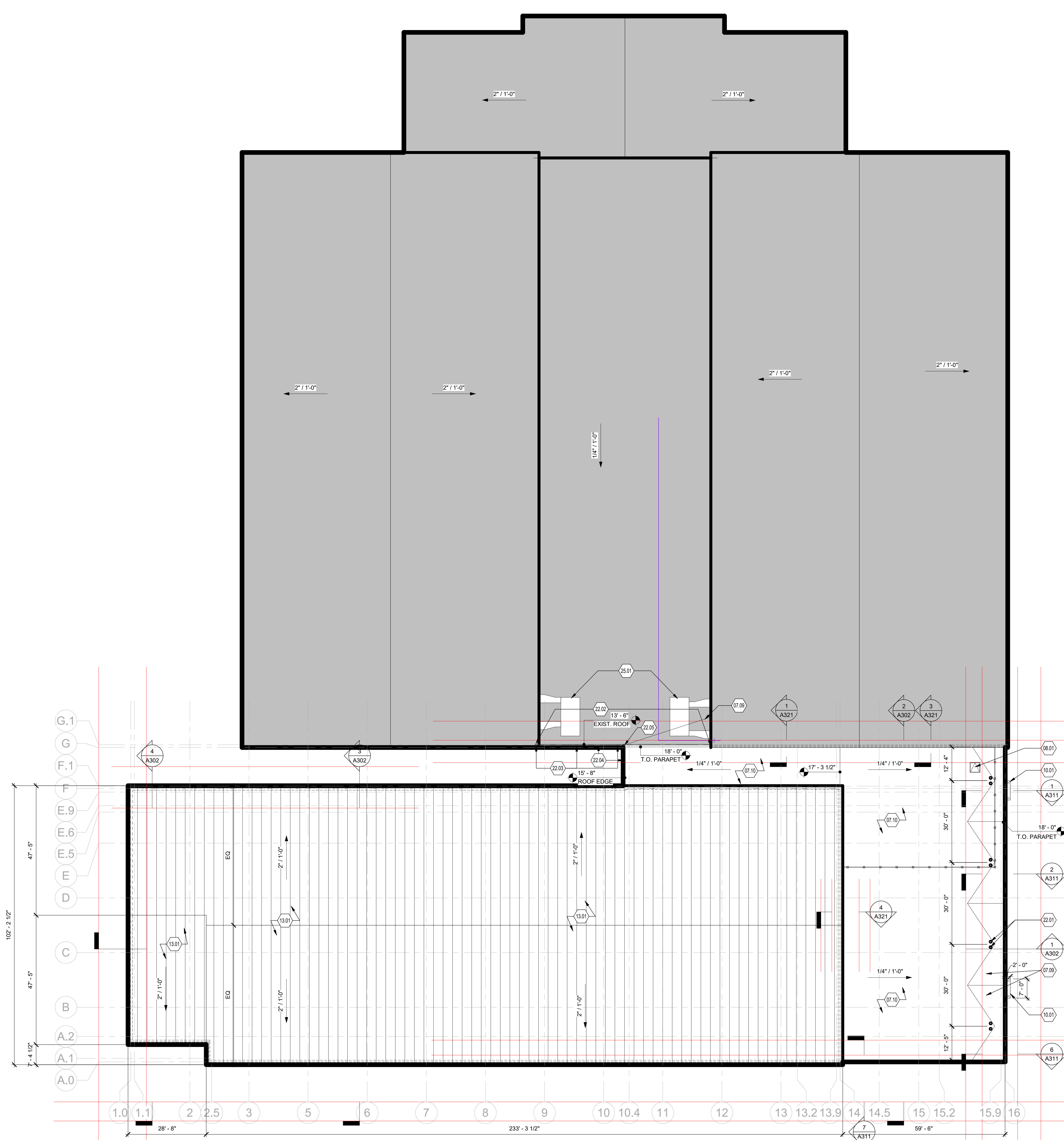
DRAWING NO.:
A111



1 FIRST FLOOR PLAN
 SCALE 1/16" = 1'-0"

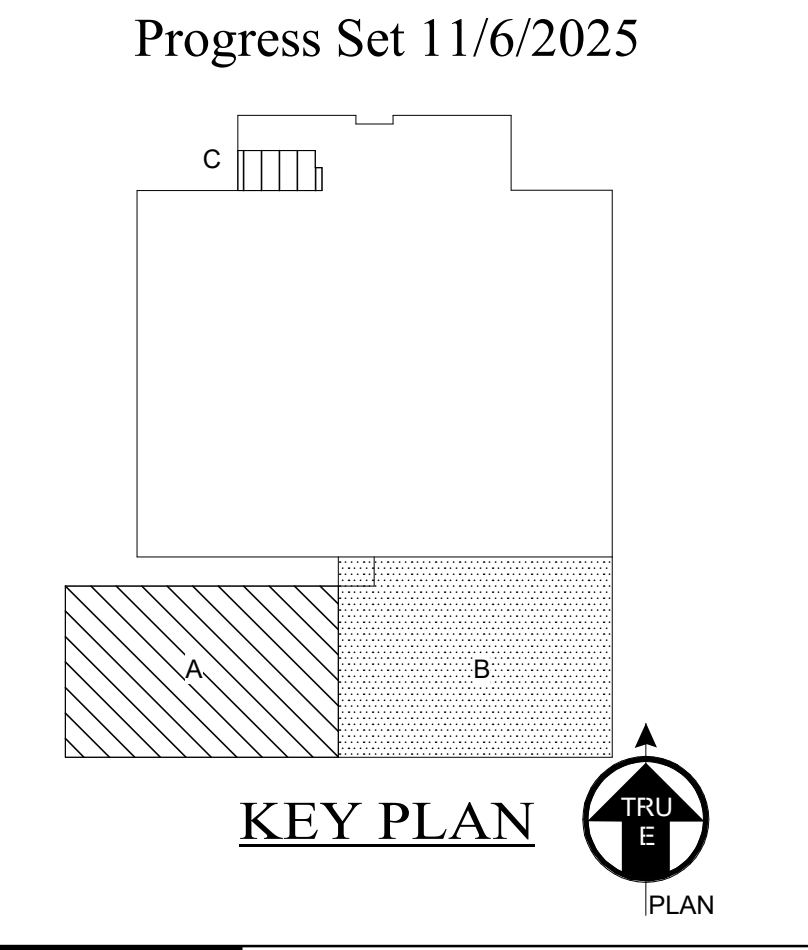
DRAWING SYMBOL LEGEND

	NEW DOOR
	NEW WALL PARTITION
	DOOR TAG
	ROOM NAME & NUMBER
	NOTE
	WALL TAG
	WALL SECTION 1 = SECTION NO. A101 = SHEET NO.
	INTERIOR ELEVATION 1 = ELEVATION NO. A101 = SHEET NO.
	ELEVATION 1 = ELEVATION NO. A101 = SHEET NO.
	DETAIL CALLOUT 1 = DETAIL NO. A101 = SHEET NO.



Keynote Legend 2	
Key Value	Keynote Text
02.01	PATCH AND REPAIR EXISTING FINISHES (FLOOR, CEILING, WALLS) DISTURBED BY DEMO.
02.02	REMOVE DOOR IN ITS ENTIRETY.
02.03	REMOVE WALL IN ITS ENTIRETY.
04.01	9\"/>

REVISION NO.
1 ISSUE NO.1 11/7/2025



COPYRIGHT:
 HIGHLAND ASSOCIATES, LTD. ARCHITECTURE ENGINEERING INTERIOR DESIGN 2025. © SHALL BE PROTECTED BY PATENTS, TRADE SECRETS AND SHALL RETAIN ALL COPYRIGHT, TRADE MARK AND OTHER RESERVED RIGHTS INCLUDING COPYRIGHT.
UNAUTHORIZED DOCUMENT USE:
 NO PART OF THIS DOCUMENT IS TO BE REPRODUCED, COPIED, STORED IN A RETRIEVING SYSTEM, TRANSMITTED IN ANY FORM OR BY ANY MEANS, ELECTRONIC, MECHANICAL, PHOTOCOPYING, RECORDING, OR BY ANY INFORMATION STORAGE AND RETRIEVAL SYSTEM, WITHOUT THE PRIOR WRITTEN PERMISSION OF HIGHLAND ASSOCIATES, LTD. ARCHITECTURE ENGINEERING INTERIOR DESIGN 2025. © VIOLATION OF THE LAW AND IS PROHIBITED.

PROJECT TITLE:
Steel Ice Center
 320 E. 1st. St.
 Bethlehem, PA 18015
STEEL ICE EXPANSION

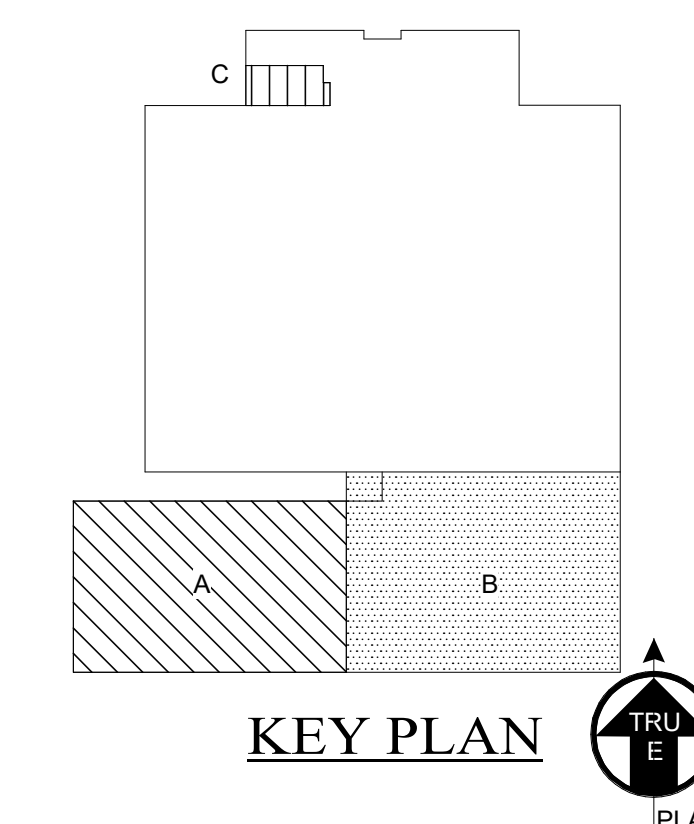
DRAWING TITLE:
ROOF PLAN

DRAWN BY: Author	CHECKED BY: Author
DATE: 10/25/11	PROJECT NO.: 2025-196

1 ROOF PLAN
 A112 SCALE 1/16" = 1'-0"

A112

Progress Set 11/6/2025



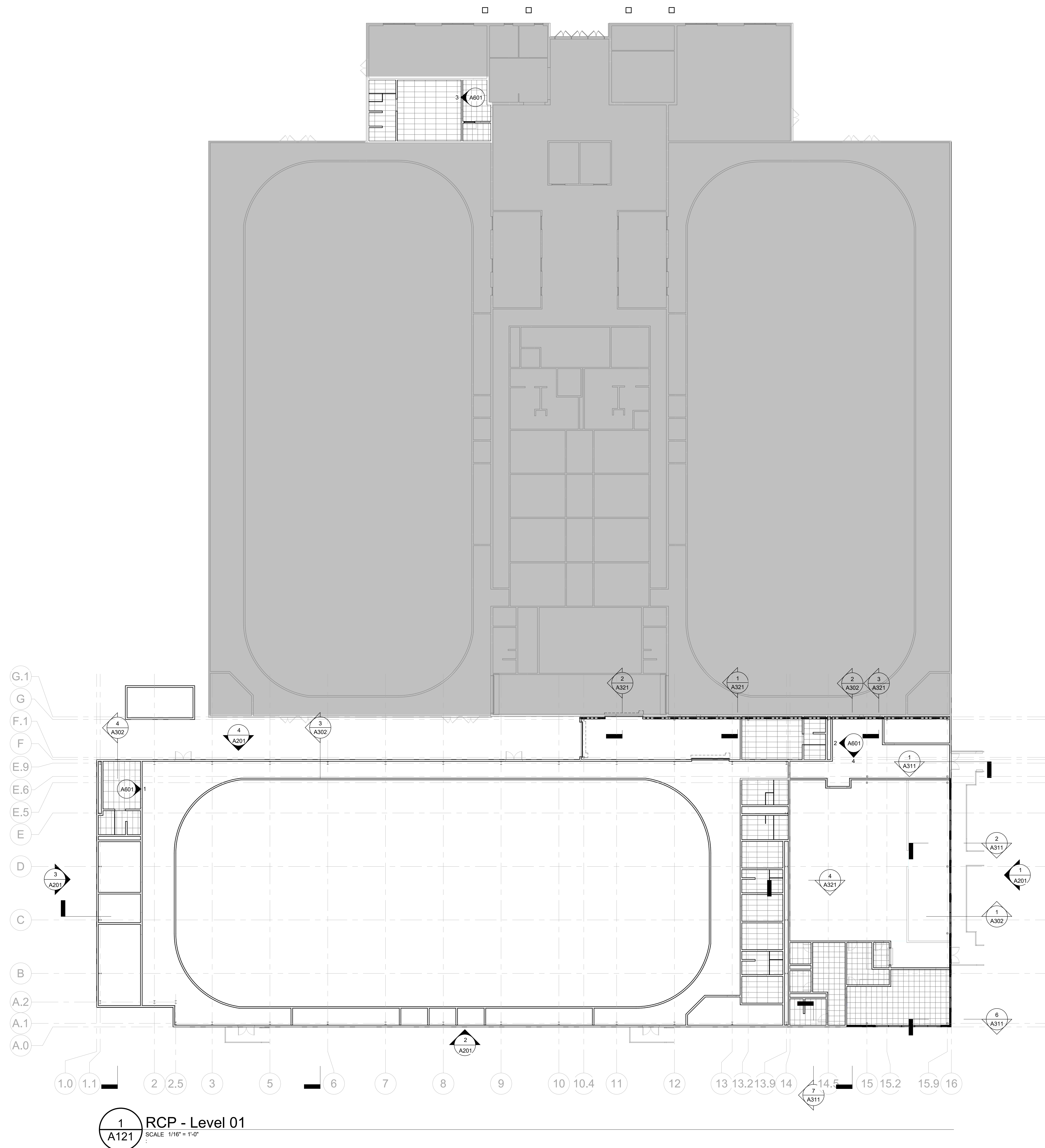
COPYRIGHT:
 HIGHLAND ASSOCIATES, LTD. ARCHITECTURE ENGINEERING INTERIOR DESIGN 2025. © SHALL BE PROTECTED BY APPLICABLE OFFICE DOCUMENTS AND SHALL REMAIN ALL COMPANY LAW, PATENTS, AND OTHER RESERVED RIGHTS INCLUDING COPYRIGHT.
 UNAUTHORIZED DOCUMENT USE:
 NO PART OF THIS DRAWING IS TO BE REPRODUCED, COPIED, STORED IN A RETRIEVAL SYSTEM, TRANSMITTED IN ANY FORM OR BY ANY MEANS, ELECTRONIC OR MECHANICAL, INCLUDING PHOTOCOPYING, RECORDING, OR BY ANY INFORMATION STORAGE AND RETRIEVAL SYSTEM, WITHOUT THE WRITTEN PERMISSION OF HIGHLAND ASSOCIATES, LTD. ARCHITECTURE ENGINEERING INTERIOR DESIGN 2025. © VIOLATION OF THE LAW AND IS PROHIBITED.

PROJECT TITLE:
Steel Ice Center
 320 E. 1st. St.
 Bethlehem, PA 18015
STEEL ICE EXPANSION

SEALS:
 DRAWING TITLE:
REFLECTED CEILING PLAN - LEVEL 1

DRAWN BY: Author	CHECKED BY: Author
DATE: 10/25/11	PROJECT NO.: 2025-196

DRAWING NO.:
A121
11/7/2025 11:05:09 AM
 Autodesk DWGTRUE LISTS Steel Ice Expansion2025-196_01
 C:\Users\jdoyle\OneDrive\Documents\Steel Ice Expansion\A121.dwg



REVISION NO.

Progress Set 11/6/2025

COPYRIGHT
 HIGHLAND ASSOCIATES, LTD. ARCHITECTURE ENGINEERING INTERIOR DESIGN 2025. © SHALL BE PRINTED
 ON RECYCLED PAPER STOCK AND SHALL REMAIN ALL COMPANY LAW, DESIGN AND OTHER
 RESERVED RIGHTS INCLUDING COPYRIGHT.

UNAUTHORIZED DOCUMENT USE
 NO PART OF THIS DOCUMENT IS TO BE REPRODUCED OR TRANSMITTED IN ANY FORM OR BY ANY MEANS
 WITHOUT PERMISSION AND REPRODUCTION OR ALTERATION OF THIS DRAWING WITHOUT THE WRITTEN
 APPROVAL OF HIGHLAND ASSOCIATES, LTD. ARCHITECTURE ENGINEERING INTERIOR DESIGN 2025. ©
 VIOLATION OF THE LAW AND IS PROHIBITED.

PROJECT TITLE:
Steel Ice Center
 320 E. 1st. St.
 Bethlehem, PA 18015

**STEEL ICE
 EXPANSION**

SEALS:

DRAWING TITLE:
**EXTERIOR
 ELEVATIONS**

DRAWN BY: Author	CHECKED BY: Author
DATE: 10/25/11	PROJECT NO.: 2025-196

DRAWING NO.:
A202

11/20/25 11:13:45 AM
 Author: Douglas, Leah; Steel Ice Expansion/2025-196_01
 Title: Steel Ice Expansion_A202.rvt



**EAST ELEVATION -
 ENTRANCE**
 SCALE 1/8" = 1'-0"
 1
 A202



EXTERIOR RENDERING 1 -
NEW RINK BUILDING

1
A901

SCALE N.T.S.

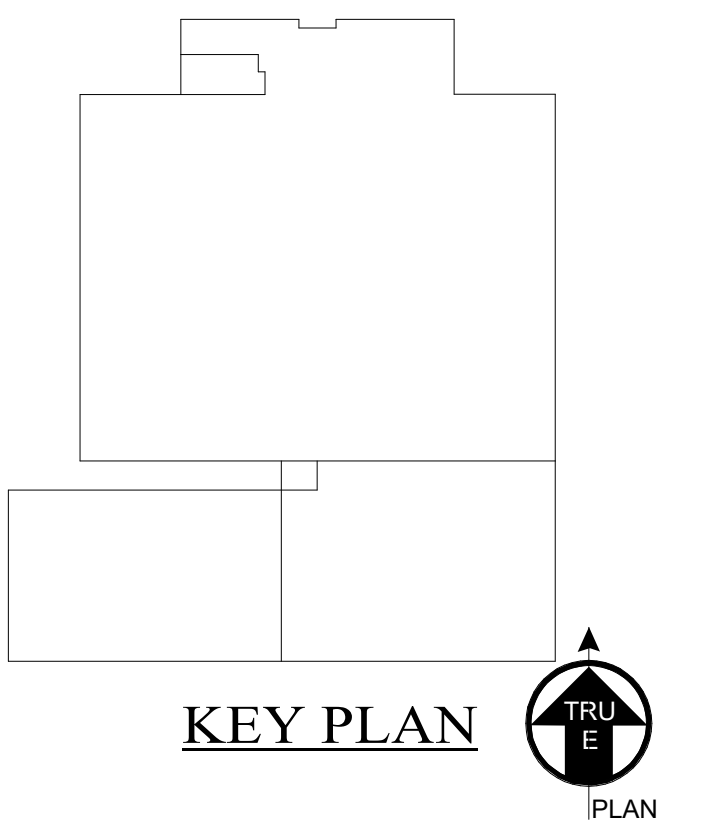


EXTERIOR RENDERING 2 -
ACROSS POLK STREET

2
A901

SCALE N.T.S.

Progress Set 11/6/2025



COPYRIGHT:
HIGHLAND ASSOCIATES, LTD. ARCHITECTURE, ENGINEERING, INTERIOR DESIGN 2025. © SHALL BE PROTECTED BY PATENT, COPYRIGHT, TRADEMARK AND OTHER LAWS. ALL RIGHTS RESERVED. ALL RIGHTS RESERVED INCLUDING COPYRIGHT.

UNAUTHORIZED DOCUMENT USE:
NO PART OF THIS DOCUMENT IS TO BE REPRODUCED OR TRANSMITTED IN ANY FORM OR BY ANY MEANS, ELECTRONIC OR MECHANICAL, INCLUDING PHOTOCOPYING, RECORDING, OR BY ANY INFORMATION STORAGE AND RETRIEVAL SYSTEM, WITHOUT THE WRITTEN PERMISSION OF HIGHLAND ASSOCIATES, LTD. ARCHITECTURE, ENGINEERING, INTERIOR DESIGN 2025. © VIOLATION OF THE LAW AND IS PROHIBITED.

PROJECT TITLE:
Steel Ice Center
320 E. 1st. St.
Bethlehem, PA 18015

**STEEL ICE
EXPANSION**

SEALS:

DRAWING TITLE:
RENDERINGS

DRAWN BY: Author	CHECKED BY: Author
DATE: 10/25/11	PROJECT NO.: 2025-196

DRAWING NO.:
A901

