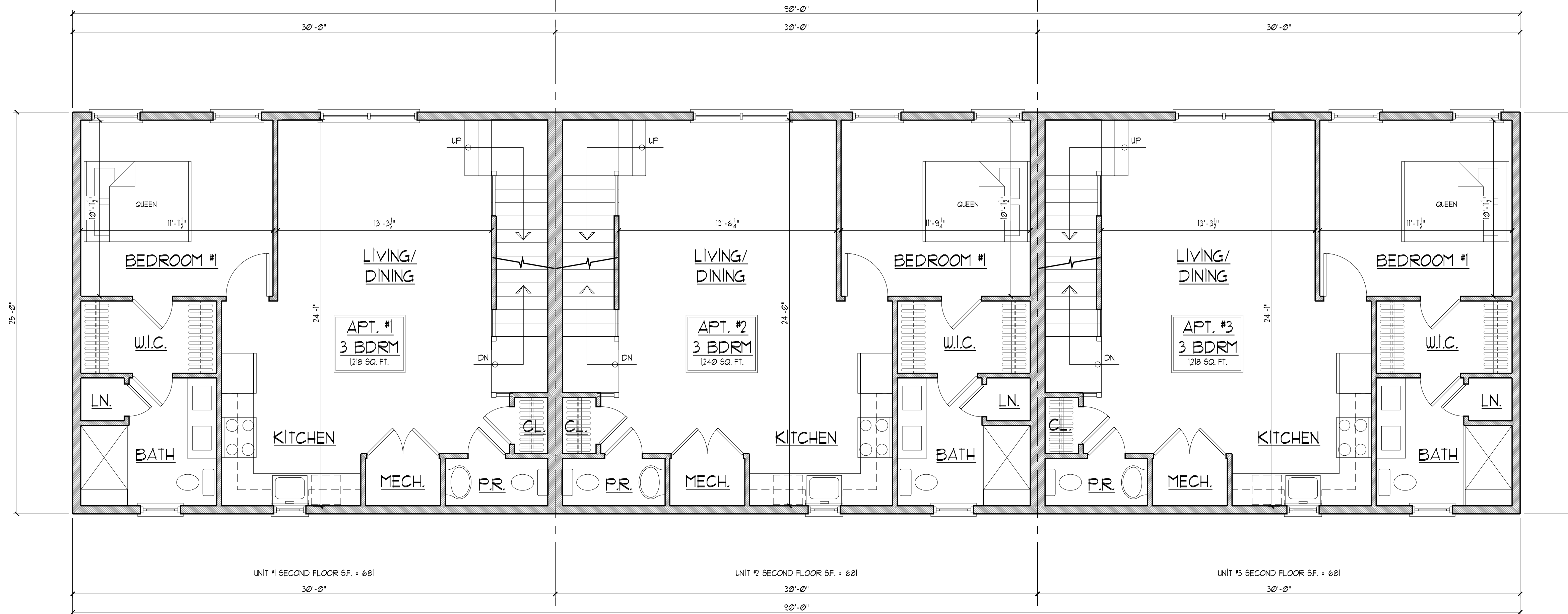
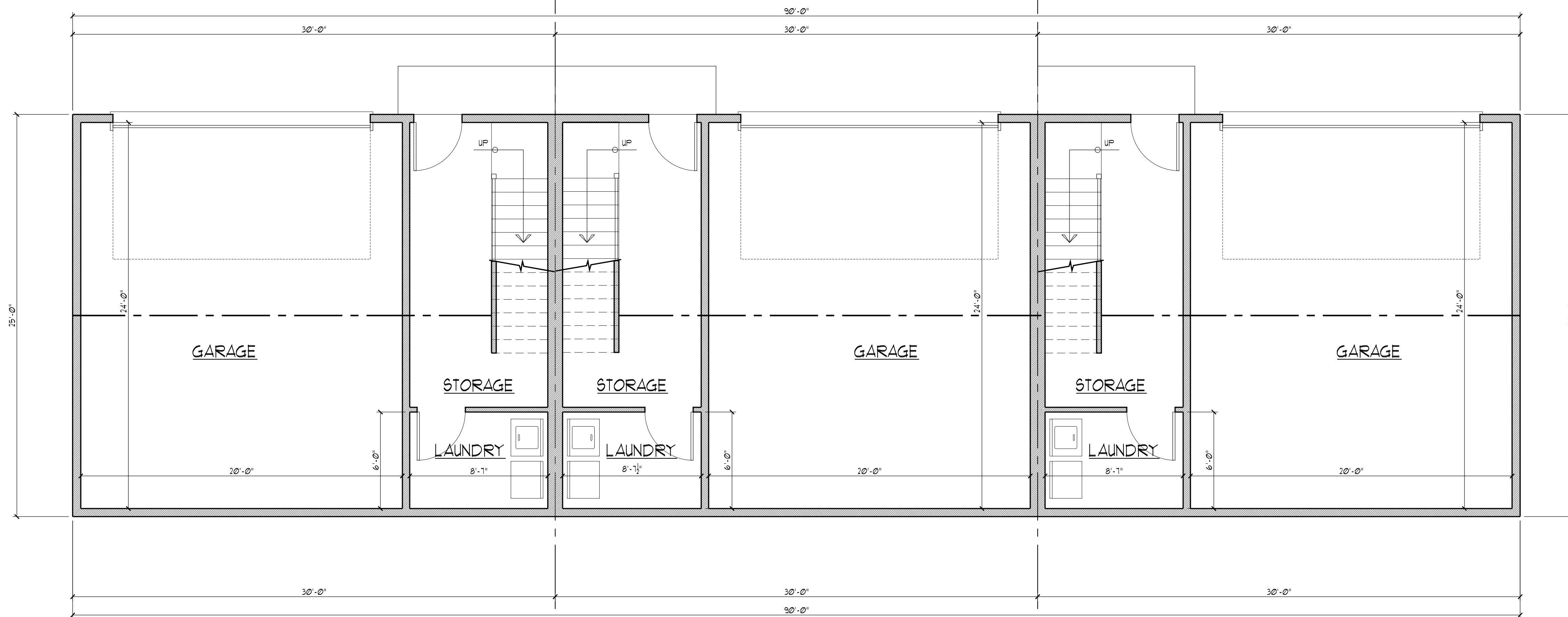


plot date: 10/11/24
 file path: g:\p\ro\2023 residential\23-95-312 hanover st apartments\drawings\cad\312 hanover apartments\sheets



2 SECOND FLOOR PLAN
 A-1 1/4" = 1'-0"



1 FIRST FLOOR PLAN
 A-1 1/4" = 1'-0"



PHILLIPS & DONOVAN ARCHITECTS, LLC.
 PhillipsDonovanArchitects.com
 P.O. Box 160, 3160 Redminister Road, Bedminster, PA 18910 Phone: 215-795-2400
 710 West Broad Street, Bethlehem, PA 18018 Phone: 610-317-0221

revisions

FLOOR PLANS
312 Hanover St Apartments
 New Apartments
 312 Hanover St, Bethlehem, PA 18018

dwg. no.:
A-1
 date: 10-11-24
 drawn by: ETW checked by: JTL

project no.
23-95R