

City of Bethlehem Historic Conservation Commission (HCC)

Certificate of Appropriateness (COA) Application Packet

Business Name: Taichi Bubble Tea

Project Address: 21 E 3rd Street, Bethlehem, PA 18015

Applicant: Mingke Yang

Project Type: Installation of new wall-mounted illuminated pan sign and projecting blade sign

Prepared for submission to the Historic Conservation Commission for review and approval.

1. PHOTOGRAPHS









2. TYPE OF WORK PROPOSED

- Installation of new wall-mounted illuminated pan sign with channel letters
- Installation of new double-sided projecting blade sign mounted perpendicular to the façade

This proposal includes adding both a main illuminated wall sign and a blade sign to identify Taichi Bubble Tea. No structural alterations will be made to the building. All materials, electrical components, and attachments will comply with City of Bethlehem requirements and the National Electrical Code.

3. DRAWINGS (Attached)

4. DESCRIPTION OF WORK

A. Main Wall-Mounted Illuminated Pan Sign:

- **Dimensions:** 112" × 30" × 3" deep
- **Material:** White aluminum pan background with applied channel letters (22" × 4" deep) featuring black aluminum returns, black plastic trim, and black acrylic letter faces
- **Letter Face Finish:** 1/8" black acrylic with off-white vinyl backing for soft, diffused illumination
- **Lighting:** 2700K warm white LED (back-lit halo illumination) within each letter; UL Listed components
- **Finish:** Matte off-white background with black letters, producing a subtle, warm illumination appropriate for the historic streetscape
- **Mounting:** Stud-mounted to the surface of the aluminum pan and flash-mounted to the exterior wall; electrical connection provided from an interior junction box
- **Compliance:** All wiring and components meet Article 600 of the National Electrical Code and City of Bethlehem requirements
- **Decorative Detail:** A narrow black pinstripe border is included around the perimeter of the wall sign panel, consistent with HCC guidelines. The border is subtle and non-reflective, providing a defined edge and visual balance that complements the façade.

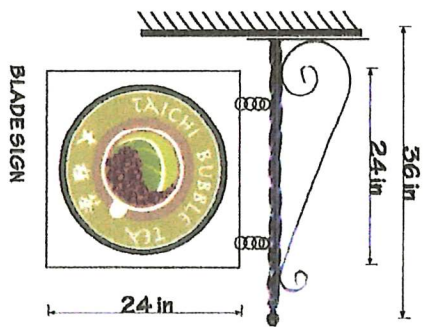
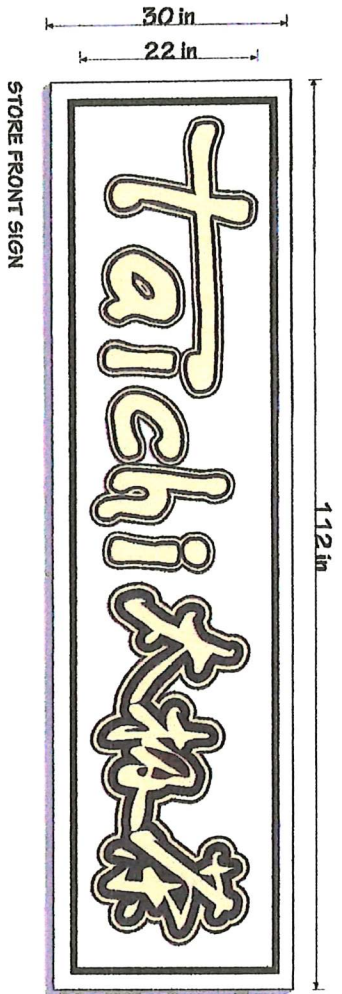
B. Projecting Blade Sign:

- **Bracket:** 36" black deluxe scroll bracket anchored into mortar joints only.
- **Sign Panel:** 24" × 24" × 1" deep double-sided aluminum panel with white finish.
- **Lighting:** No internal illumination; relies on ambient street and storefront lighting.
- **Mounting:** Hung from decorative bracket with concealed fasteners; projection ≤ 3.5 ft from wall.
- **Design:** Logo and lettering match wall sign for brand consistency; matte, non-reflective finish.

No flashing, neon, or color-changing elements are proposed. All materials are durable, historically compatible, and consistent with the South Bethlehem HCC Signage Guidelines.

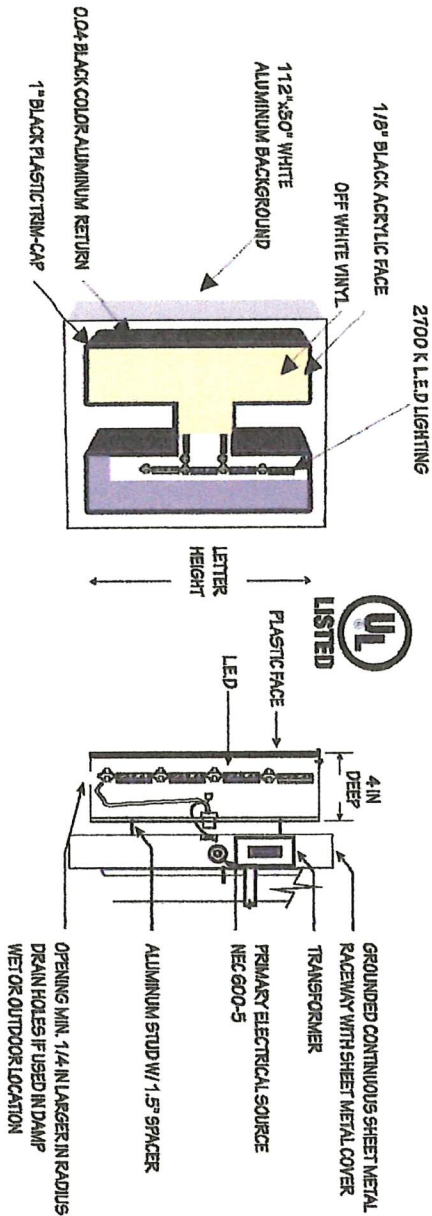
5. DESCRIBE THE PROJECT

The proposed signage package for Taichi Bubble Tea includes two complementary signs designed to maintain the aesthetic integrity of the South Bethlehem Historic Conservation District. The primary wall sign features warm 2700K LED back-lit channel letters on an off-white aluminum background, producing a soft, historically appropriate halo illumination. The projecting blade sign provides pedestrian visibility without lighting, ensuring a balanced and tasteful storefront appearance. Both signs employ muted tones, matte finishes, and quality materials that harmonize with the brick façade and surrounding businesses. The designs are proportionate to the building scale and comply with HCC guidelines and the National Electrical Code, ensuring safety, durability, and preservation of the district's architectural character.



ILLUMINATED CHANNEL LETTER (BACK-LIT ILLUMINATED)

LETTER / RACEWAY INSTALLATION DETAIL



THIS SIGN IS INTENDED TO BE INSTALLED IN ACCORDANCE WITH THE REQUIREMENTS OF ARTICLE 600 OF THE NATIONAL ELECTRICAL CODE AND / OR OTHER APPLICABLE LOCAL CODES. THIS INCLUDES PROPER GROUNDING AND BONDING OF THE SIGN.

STORE FRONT DETAILS:

EXTERIOR PAN SIGN W/ APPLIED CHANNEL LETTERS

MATERIAL

PAN SIZE: 112" X 30" X 3" D WITH WHITE ALUMINUM FINISH CHANNEL LETTERS, 2.2" X 4" D W/ BLACK ALUMINUM RETURN BLACK PLASTIC TRIM WITH BLACK ACRYLIC FACE (BACK-LIT ILLUMINATED) STUD MOUNTED TO SURFACE OF PAN LIGHTING: WHITE LED

MOUNTING

FLASH-MOUNTED TO EXTERIOR WALL ELECTRICAL PROMBED

BLADE SIGN DETAILS:

DOUBLE SIDE BLADE SIGN

MATERIAL

36" BLACK DELUXE SCROLL BRACKET 24" X 24" X 1" DEPTH BOX SIGN WITH WHITE ALUMINUM FINISH NO INTERNAL LIGHTING

THIS ORIGINAL AND UNPUBLISHED DESIGN IS COPYRIGHT AND EXCLUSIVE PROPERTY OF WIN YING INC. AND IS NOT TO BE EXHIBITED, COPIED OR REPRODUCED IN WHOLE OR IN PART WITHOUT WRITTEN PERMISSION. ALL SIZES AND DIMENSIONS ARE SHOWN FOR CLIENT CONCEPTION OF A CURRENT PROJECT AND ARE NOT BE UNDERSTOOD AS BEING EXACT SIZE OF EXACT SCALE.

OUR COMPANY IS NOT RESPONSIBLE FOR DIFFERENCE IN COLORS BETWEEN THIS PRINT AND FINAL PRODUCT. WE WILL TRY TO MATCH COLORS AS CLOSELY AS POSSIBLE, BUT WE CANNOT GUARANTEE EXACT COLOR MATCHES DUE TO DIFFERENT SURFACE, MATERIAL AND PAINTS BEING APPLIED.



永耀招牌

WIN YING INC.
315 GRAND ST.
New York, N.Y. 10002
Info@winying.com



請認商標

PROJECT NUMBER
WY10077

PROJECT NAME
TAICHÌ BUBBLE TEA

21 E 3rd st
BETHLEHEM
PA
18015

Client Info
Sun
6075923725

ISSUED:
10/27/2025

DRAWN BY: JAN
SHEET DESCRIPTION
SIGN



永恆招牌

WIN YING INC
315 GRAED ST.
New York N.Y 10002
Info@shewyng.com



特價查詢

PROJECT NUMBER:
WY10077

PROJECT NAME
TAICHI BUBBLE TEA

21 E 3rd st

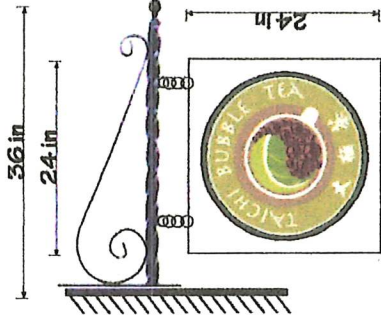
BETHLEHEM
PA
19015

Client Info
Sun
6075923725

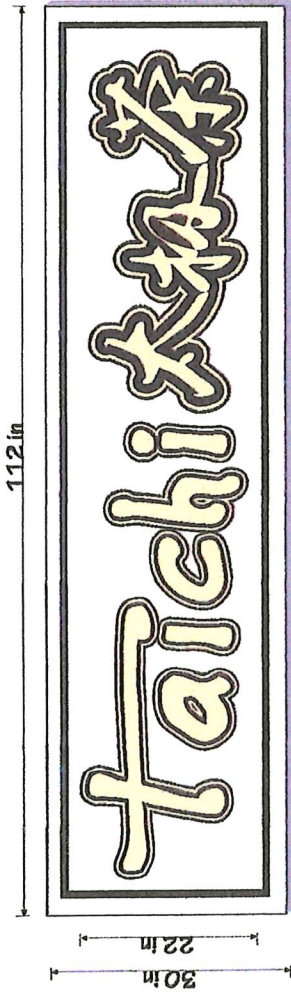
ISSUED:
10/27/2025

DRAWN BY: JAY
SHEET DESCRIPTION

SIGN

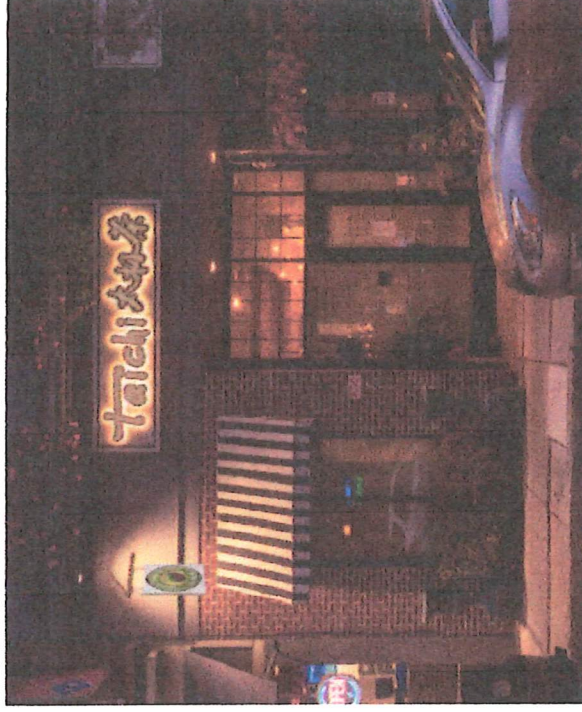


BLADE SIGN

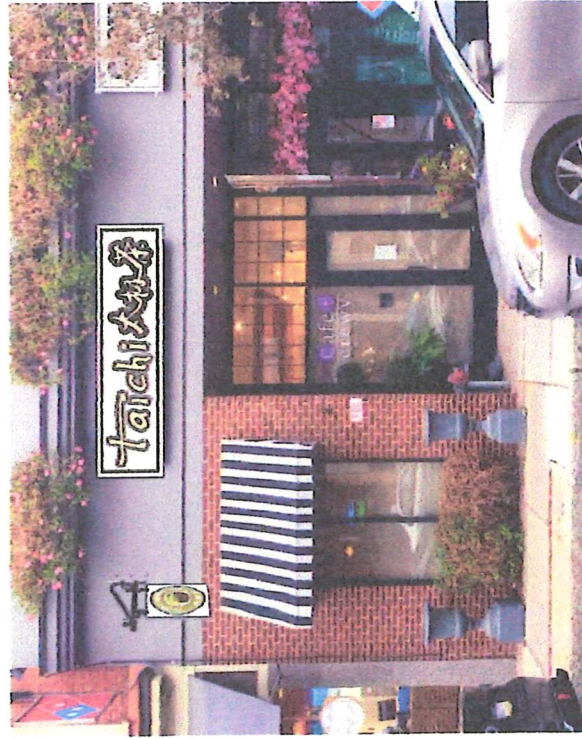


STORE FRONT SIGN

PROPOSED SIGN ELEVATION- NIGHT (N.T.S.)



PROPOSED SIGN ELEVATION- DAY (N.T.S.)



OUR COMPANY IS NOT RESPONSIBLE FOR DIFFERENCE IN COLORS BETWEEN THIS PRINT AND FINAL PRODUCT. WE WILL TRY TO MATCH COLORS AS CLOSELY AS POSSIBLE, BUT WE CANNOT GUARANTEE EXACT COLOR MATCHES DUE TO DIFFERENT SURFACE, MATERIAL AND PAINTS BEING APPLIES

THIS ORIGINAL AND UNPUBLISHED DESIGN IS COPYRIGHT AND EXCLUSIVE PROPERTY OF WIN YING INC. AND IS NOT TO BE EXHIBITED, COPIED OR REPRODUCE IN WHOLE OR IN PART WITHOUT WRITTEN PERMISSION. ALL SIZES AND DIMENSIONS ARE SHOWN FOR CLIENT CONCEPTION OF A CURRENT PROJECT AND ARE NOT BE UNDERSTOOD AS BEING EXACT SIZE OF EXACT SCALE.