

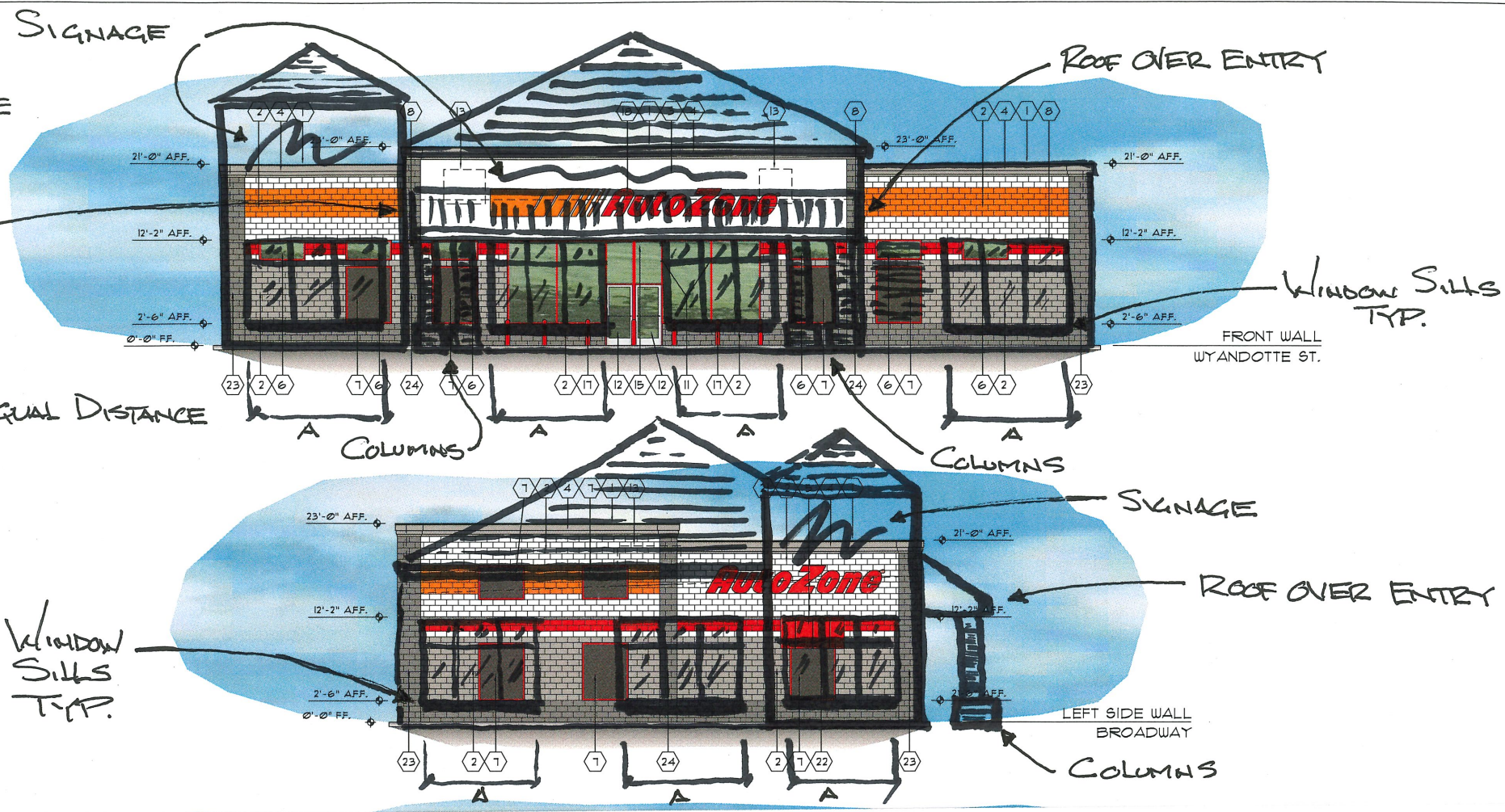
1. ELEVATE CORNER & ENTRY / DEEMPHASIZE "BLANK" WALLS.

2. PITCHED ROOF IN LIEU OF ALL FLAT. ENTRY

3. STOREFRONT WINDOWS IN LIEU OF SINGLES.

4. WINDOW SILLS.

5. WINDOW GLASS 7/10 TRANSPARENT TO MAX. EXTENT POSSIBLE.



- 1 TWO PIECE COMPRESSION TRIM COLOR BLACK
- 2 SPLIT FACE CONCRETE MASONRY UNITS
- 3 MFG. EXTERIOR INSULATED FINISH SYSTEM (EIFS)-PAINT WHITE
- 4 DECORATIVE CORNICE WITH STUCCO FINISH COLOR
- 5 CANOPY W/ STANDING BEAM METAL ROOF COLOR RED
- 6 CLERESTORY WINDOW - EVERGREEN GLASS
- 7 FAUX WINDOW - OPAQUE BLACK GLASS
- 8 WALL MOUNTED LED LIGHT FIXTURE COLOR BRONZE
- 9 PAINT MAN DOOR RED 4 METAL FRAMES BLACK
- 10 DO NOT PAINT OVERHEAD DOOR PAINT ANGLES BLACK
- 11 ALUMINUM STOREFRONT - RED KYNAR FINISH EVERGREEN GLASS
- 12 GLASS AND ALUMINUM DOORS - CLEAR ANODIZED FINISH
- 13 RTU'S FULLY SCREENED BEHIND PARAPET WALLS
- 14 TOILET WALL VENTS PAINT TO MATCH WALL
- 15 STORE ADDRESS - 6" WHITE REFLECTIVE NUMBERS
- 16 SCUPPERS AND DOWNSPOUTS, PAINTED TO MATCH BACKGROUND WALL COLOR. ADJACENT 4" H. X 6" W. OVERFLOW SCUPPER. FLOWLINE 2" ABOVE ROOF.
- 17 PIPE GUARD WITH RED SLEEVE
- 18 FRONT WALL SIGN - 38" CHANNEL - LSTRP
- 19 REAR WALL SIGN - 38" CHANNEL - NSTRP
- 20 RIGHT WALL SIGN - 38" CHANNEL - NSTRP
- 21 LEFT WALL SIGN - 38" CHANNEL - NSTRP
- 22 TOP OF FAUX WINDOW BEHIND CANOPY
- 23 2'-8" WIDE X 4" DP. CORNER FILASTERS
- 24 2'-0" WIDE X 4" DP. FILASTERS

2 ELEVATION KEY NOTES

REV	REVISIONS		
	1	2	3
REV1			
REV2			
REV3			
REV4	4	5	6

re No. 1400
OTTE ST

PA 18105

EXTERIOR ELEVATIONS / NOTES