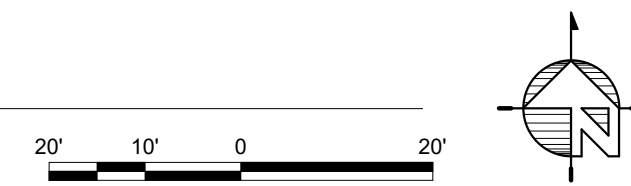


1 SITE PLAN
SCALE: 1" = 20'-0"



PROPOSED RENDERING

MIXED-USE BUILDING			
UNIT TYPE	QUANTITY	MIX	GSF
FIRST FLOOR LOBBY/ AMENITY RETAIL	1,330 SF 1,928 SF		6,475 SF
SECOND THRU SEVENTH FLOOR ONE BEDROOM TWO BEDROOM	5 UNITS 2 UNITS		6,475 SF
TOTAL ONE BEDROOMS	30 UNITS	72%	
TOTAL TWO BEDROOMS	12 UNITS	28%	
TOTAL UNITS	42 UNITS		
TOTAL BUILDING SF			45,325 SF



NORTH STAR
Construction Management Inc.

NEW ST. APARTMENTS
BETHLEHEM, PA
03.30.26

SITE PLAN & RENDERING
SCALE: As indicated
PAGE 01



NORTH STAR
Construction Management Inc.

NEW ST. APARTMENTS
BETHLEHEM, PA
03.30.26

EXISTING PROPERTY



NORTH STAR
Construction Management Inc.

NEW ST. APARTMENTS
BETHLEHEM, PA
03.30.26

ISOMETRIC SITE RENDERING

MIXED-USE BUILDING			
UNIT TYPE	QUANTITY	MIX	GSF
FIRST FLOOR LOBBY/ AMENITY RETAIL	1,330 SF 1,928 SF		6,475 SF
SECOND THRU SEVENTH FLOOR ONE BEDROOM TWO BEDROOM	5 UNITS 2 UNITS		6,475 SF
TOTAL ONE BEDROOMS	30 UNITS	72%	
TOTAL TWO BEDROOMS	12 UNITS	28%	
TOTAL UNITS	42 UNITS		
TOTAL BUILDING SF			45,325 SF



1 FIRST FLOOR PLAN
SCALE: 1/8" = 1'-0"



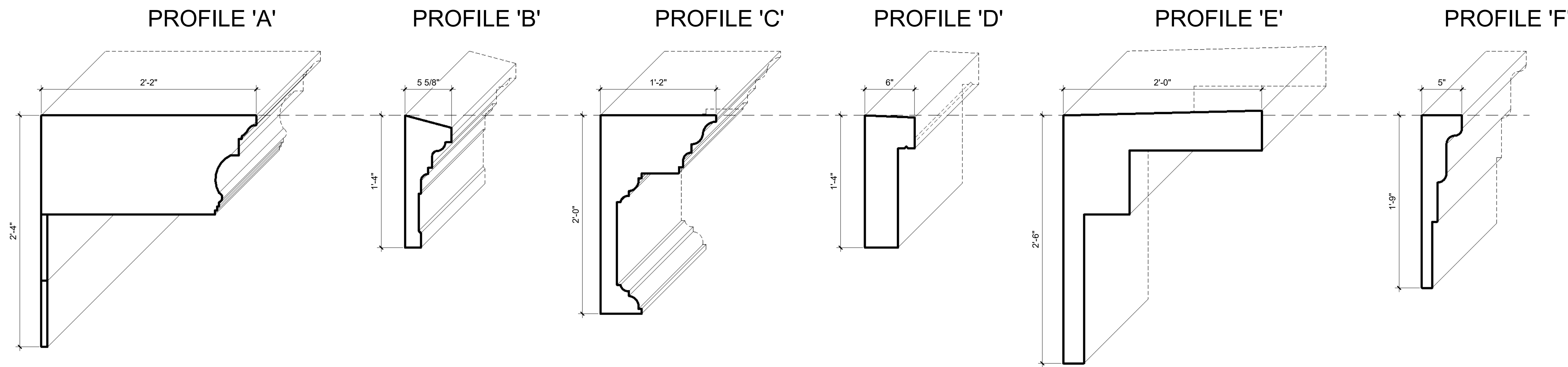
2 SECOND THRU SEVENTH FLOOR PLAN
SCALE: 1/8" = 1'-0"



NORTH STAR
Construction Management Inc.

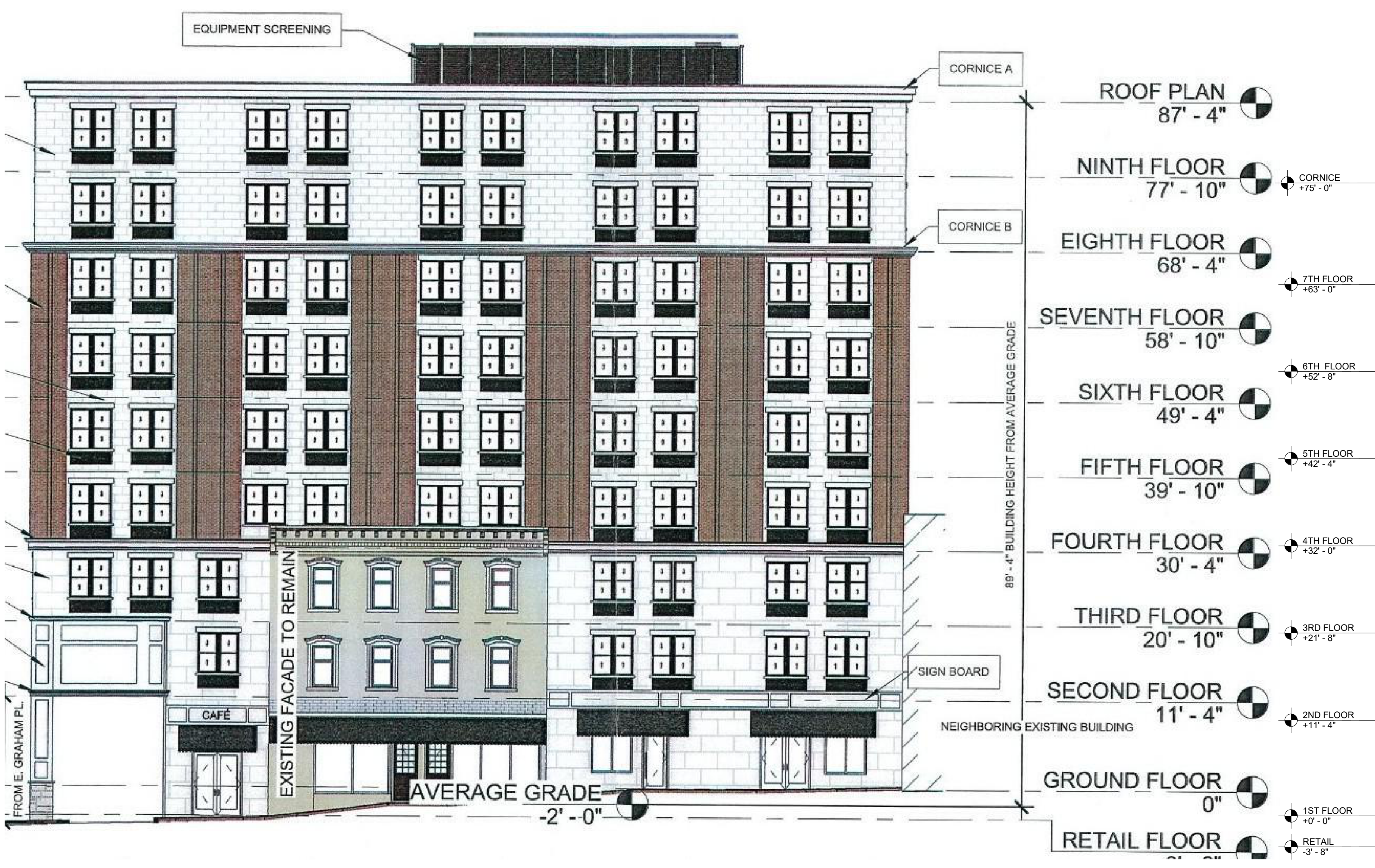
NEW ST. APARTMENTS
BETHLEHEM, PA
03.30.26

PRESENTATION PLANS
SCALE: 1/8" = 1'-0"
PAGE 04



EXTERIOR MATERIAL LEGEND				
ITEM NO.	MATERIAL	BASIS OF DESIGN	STYLE	COLOR
1	CAST STONE VENEER	FADDIS CAST STONE	12" X 24"	WHITE
2	BRICK VENEER	BELDEN BRICK COMPANY	RUNNING BOND	ALAMO BLEND
3	BRICK VENEER	BELDEN BRICK COMPANY	RUNNING BOND	WINWOOD BLEND
4	FIBER CEMENT BOARD SIDING	JAMES HARDIE	SMOOTH	WHITE
5	FIBER CEMENT SCALLOP SIDING	JAMES HARDIE	SMOOTH	NIGHT GREY
6	FIBER CEMENT LAP SIDING	JAMES HARDIE	SMOOTH	PEARL GREY
7	PRE-ENGINEERED POLYMER COATED FOAM TRIM	-	-	VARIABLES
8	FIBER CEMENT BOARD TRIM	-	-	VARIABLES
9	STOREFRONT SYSTEM	YKK/KAWNEER	-	ANNODIZED
10	COMPOSITE FIBERGLASS WINDOW	ANDERSON 100 SERIES	-	BLACK
11	ALUMINUM LOUVER	-	-	BLACK
12	FABRIC AWNING	-	-	BLACK

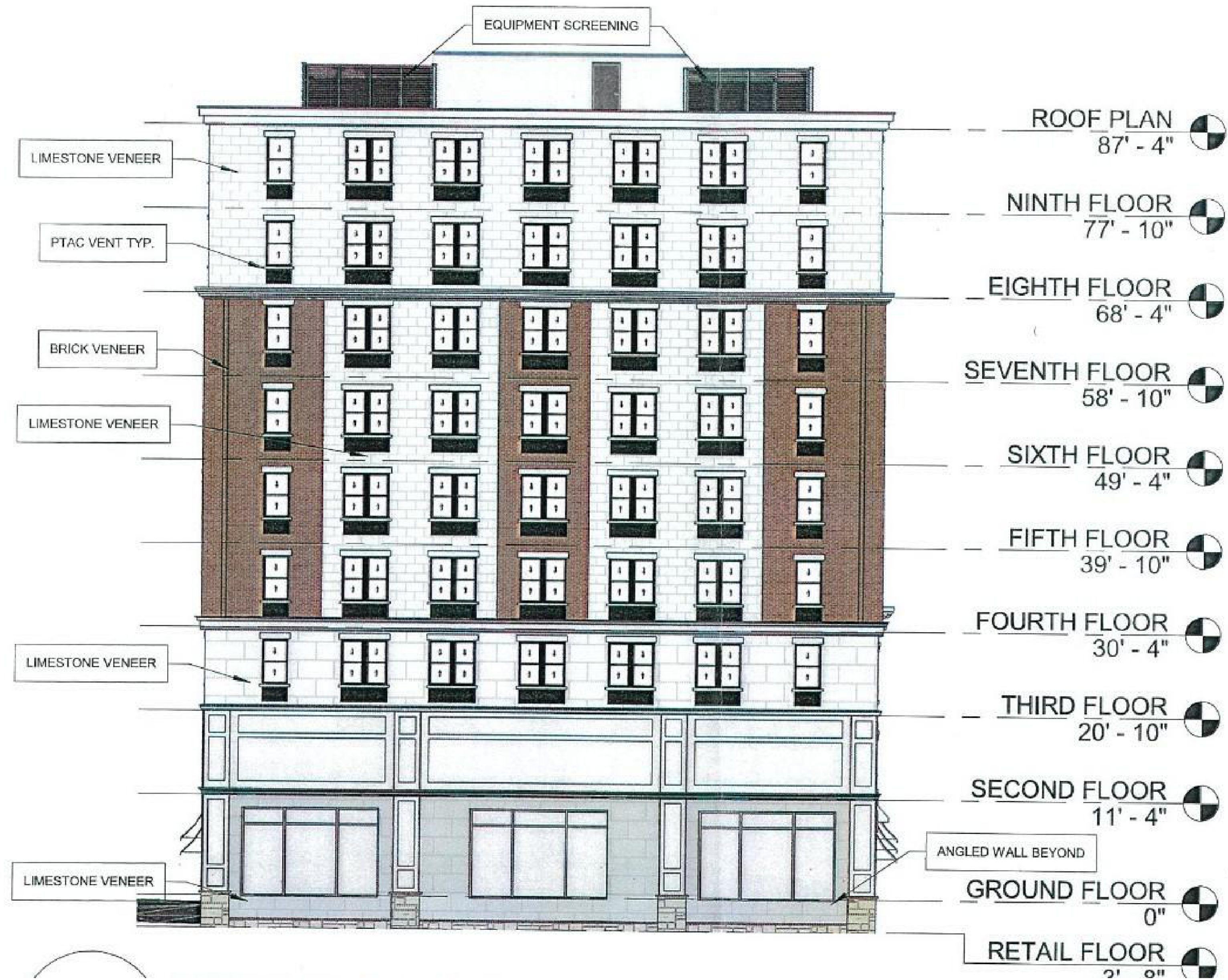
A CORNICE PROFILES
SCALE: 1 1/2" = 1'-0"



PREVIOUSLY APPROVED HCC ELEVATION

B WEST ELEVATION - PROPOSED
SCALE: 1/8" = 1'-0"

EXTERIOR MATERIAL LEGEND				
ITEM NO.	MATERIAL	BASIS OF DESIGN	STYLE	COLOR
①	CAST STONE VENEER	FADDIS CAST STONE	12" X 24"	WHITE
②	BRICK VENEER	BELDEN BRICK COMPANY	RUNNING BOND	ALAMO BLEND
③	BRICK VENEER	BELDEN BRICK COMPANY	RUNNING BOND	WINEWOOD BLEND
④	FIBER CEMENT BOARD SIDING	JAMES HARDIE	SMOOTH	WHITE
⑤	FIBER CEMENT SCALLOP SIDING	JAMES HARDIE	SMOOTH	NIGHT GREY
⑥	FIBER CEMENT LAP SIDING	JAMES HARDIE	SMOOTH	PEARL GREY
⑦	PRE-ENGINEERED POLYMER COATED FOAM TRIM	-	-	VARIES
⑧	FIBER CEMENT BOARD TRIM	-	-	VARIES
⑨	STOREFRONT SYSTEM	YKK/KAWNEER	-	ANNODIZED
⑩	COMPOSITE FIBERGLASS WINDOW	ANDERSON 100 SERIES	-	BLACK
⑪	ALUMINUM LOUVER	-	-	BLACK
⑫	FABRIC AWNING	-	-	BLACK



PREVIOUSLY APPROVED HCC ELEVATION



A NORTH ELEVATION - PROPOSED
SCALE: 1/8" = 1'-0"

EXTERIOR MATERIAL LEGEND				
ITEM NO.	MATERIAL	BASIS OF DESIGN	STYLE	COLOR
①	CAST STONE VENEER	FADDIS CAST STONE	12" X 24"	WHITE
②	BRICK VENEER	BELDEN BRICK COMPANY	RUNNING BOND	ALAMO BLEND
③	BRICK VENEER	BELDEN BRICK COMPANY	RUNNING BOND	WINWOOD BLEND
④	FIBER CEMENT BOARD SIDING	JAMES HARDIE	SMOOTH	WHITE
⑤	FIBER CEMENT SCALLOP SIDING	JAMES HARDIE	SMOOTH	NIGHT GREY
⑥	FIBER CEMENT LAP SIDING	JAMES HARDIE	SMOOTH	PEARL GREY
⑦	PRE-ENGINEERED POLYMER COATED FOAM TRIM	-	-	VARIES
⑧	FIBER CEMENT BOARD TRIM	-	-	VARIES
⑨	STOREFRONT SYSTEM	YKK/KAWNEER	-	ANNOZIED
⑩	COMPOSITE FIBERGLASS WINDOW	ANDERSON 100 SERIES	-	BLACK
⑪	ALUMINUM LOUVER	-	-	BLACK
⑫	FABRIC AWNING	-	-	BLACK

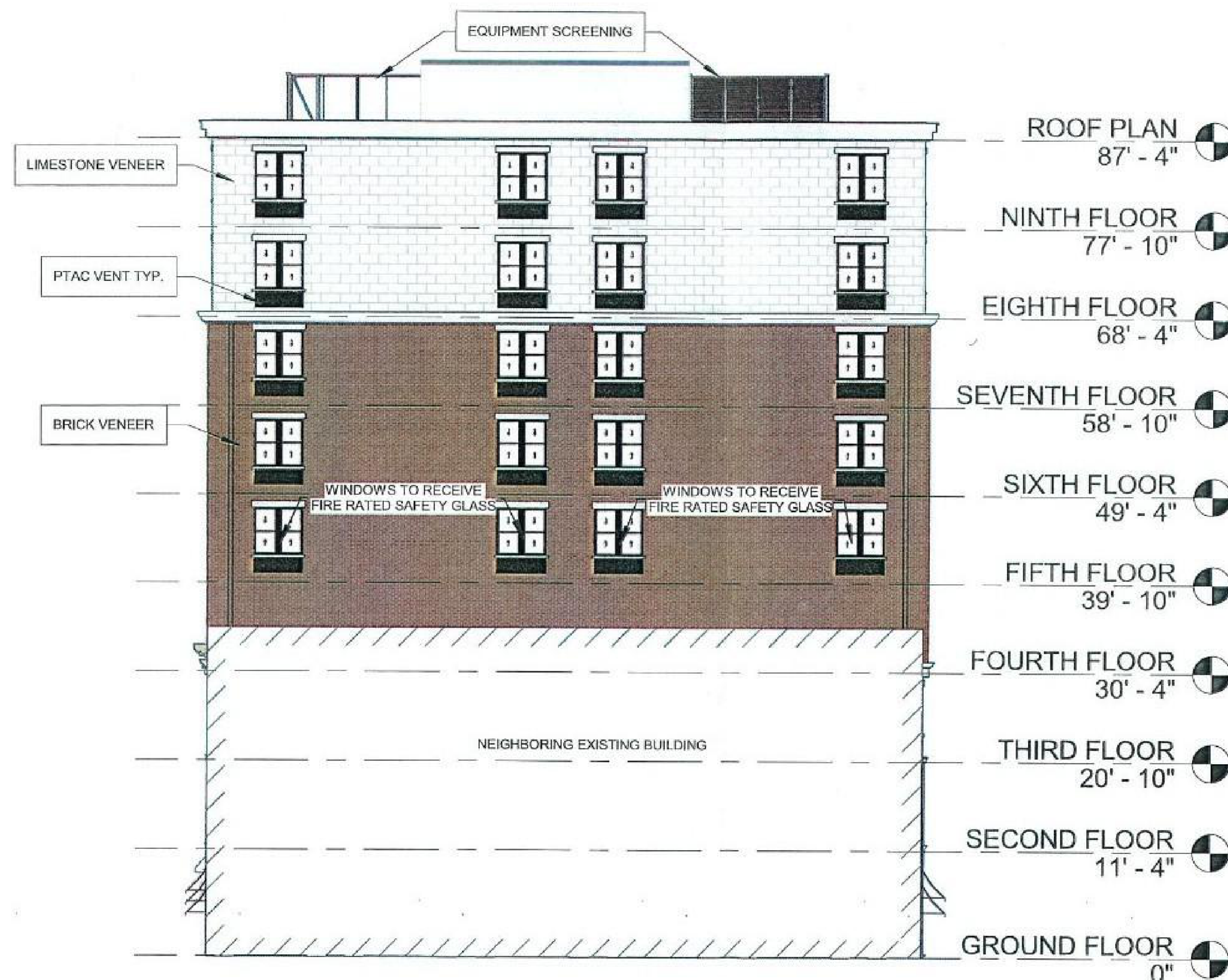


PREVIOUSLY APPROVED HCC ELEVATION

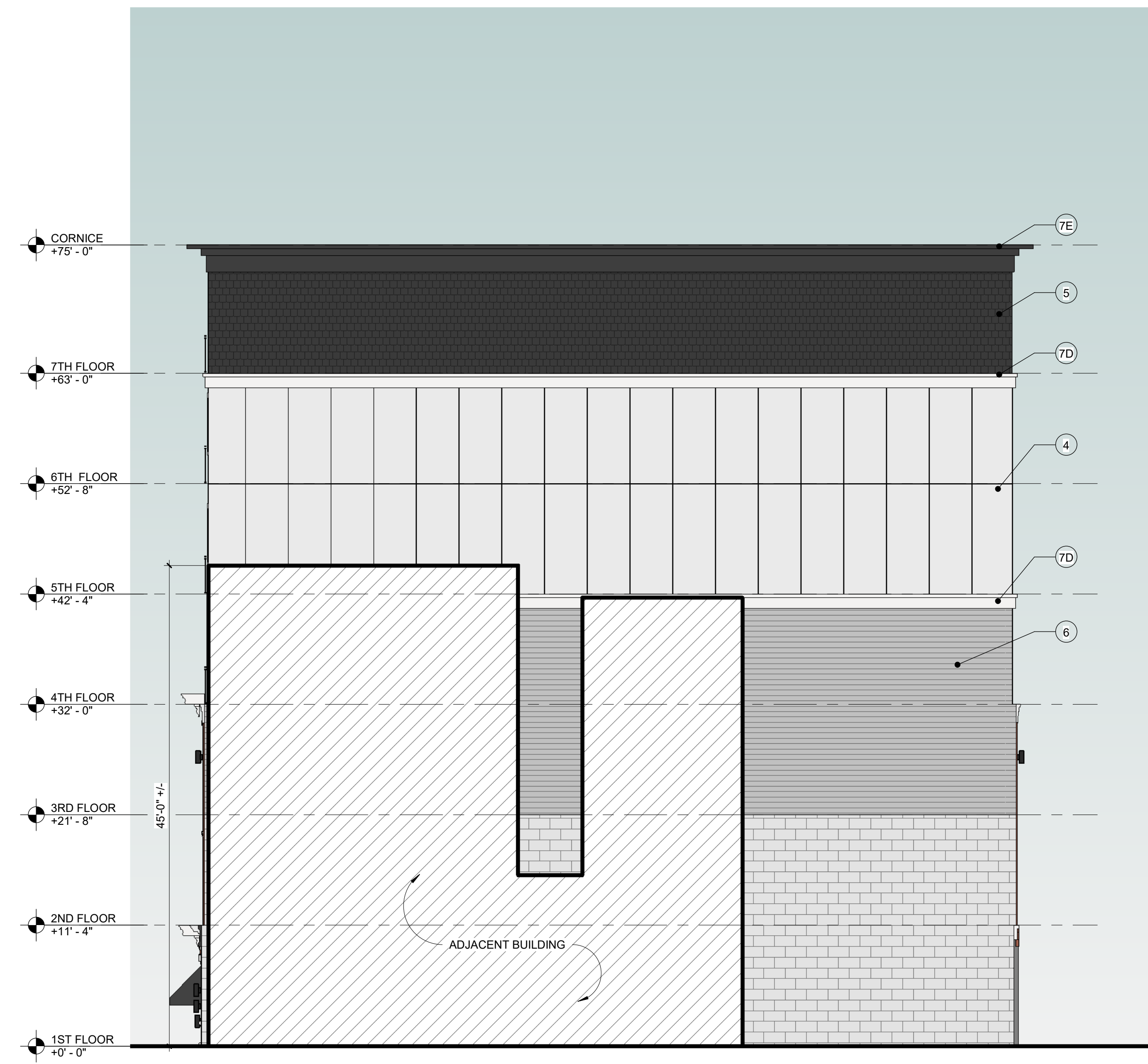


© EAST ELEVATION - PROPOSED
SCALE: 1/8" = 1'-0"

EXTERIOR MATERIAL LEGEND				
ITEM NO.	MATERIAL	BASIS OF DESIGN	STYLE	COLOR
1	CAST STONE VENEER	FADDIS CAST STONE	12" X 24"	WHITE
2	BRICK VENEER	BELDEN BRICK COMPANY	RUNNING BOND	ALAMO BLEND
3	BRICK VENEER	BELDEN BRICK COMPANY	RUNNING BOND	WINWOOD BLEND
4	FIBER CEMENT BOARD SIDING	JAMES HARDIE	SMOOTH	WHITE
5	FIBER CEMENT SCALLOP SIDING	JAMES HARDIE	SMOOTH	NIGHT GREY
6	FIBER CEMENT LAP SIDING	JAMES HARDIE	SMOOTH	PEARL GREY
7	PRE-ENGINEERED POLYMER COATED FOAM TRIM	-	-	VARIES
8	FIBER CEMENT BOARD TRIM	-	-	VARIES
9	STOREFRONT SYSTEM	YKK/KAWNEER	-	ANNODIZED
10	COMPOSITE FIBERGLASS WINDOW	ANDERSON 100 SERIES	-	BLACK
11	ALUMINUM LOUVER	-	-	BLACK
12	FABRIC AWNING	-	-	BLACK



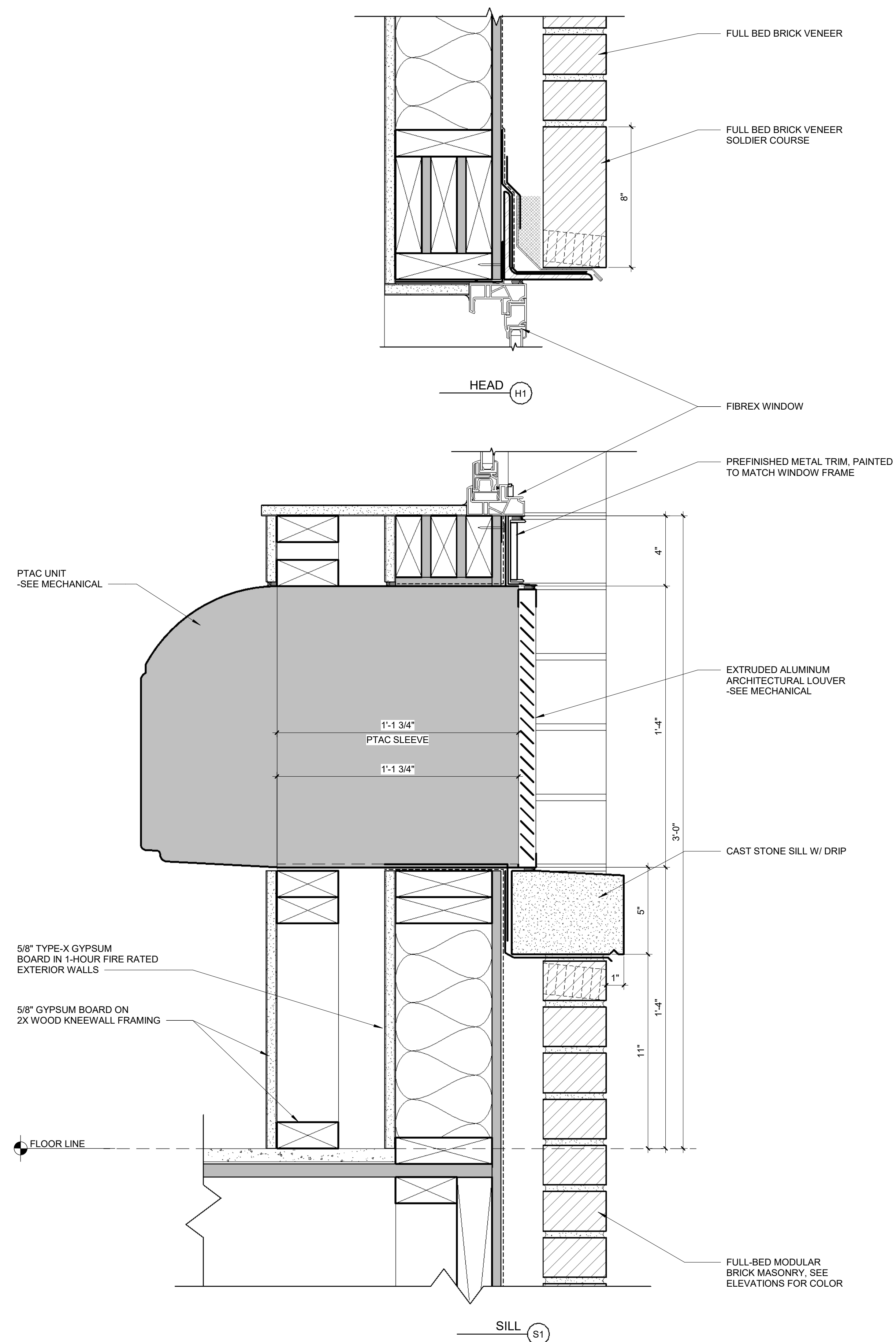
PREVIOUSLY APPROVED HCC ELEVATION



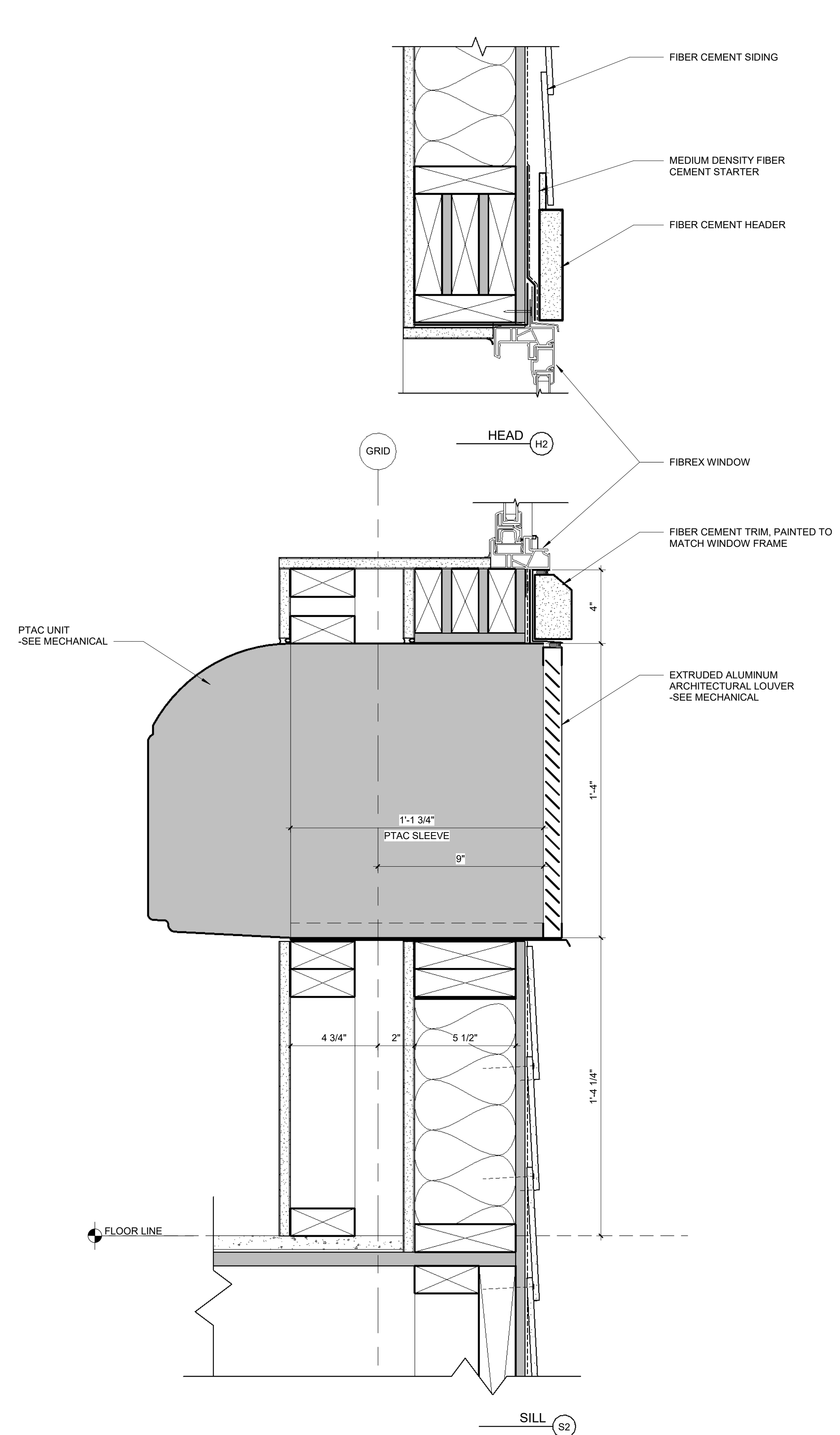
D SOUTH ELEVATION - PROPOSED
SCALE: 1/8" = 1'-0"



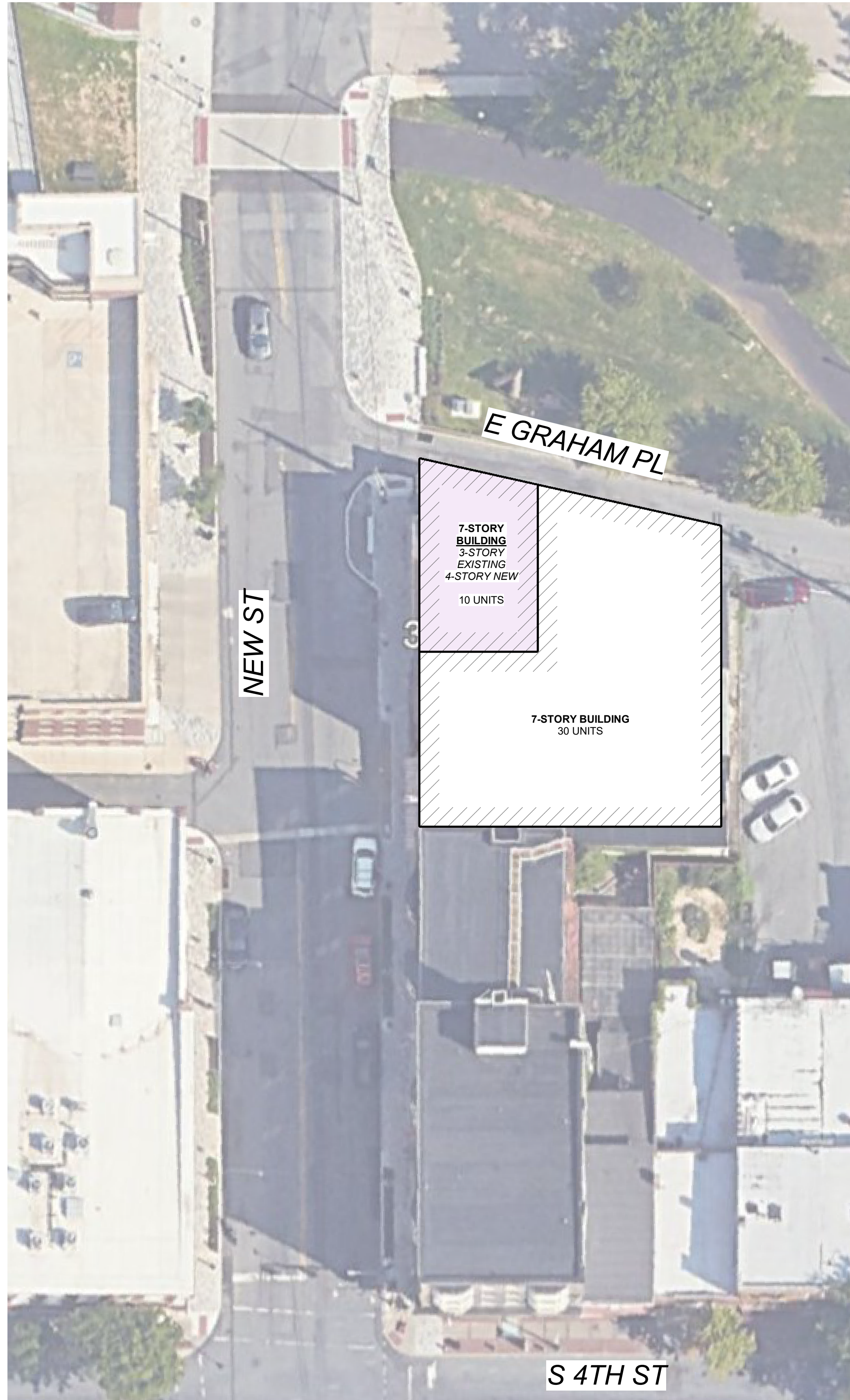
A WEST ELEVATION - STREETSCAPE
 SCALE: 1/8" = 1'-0"



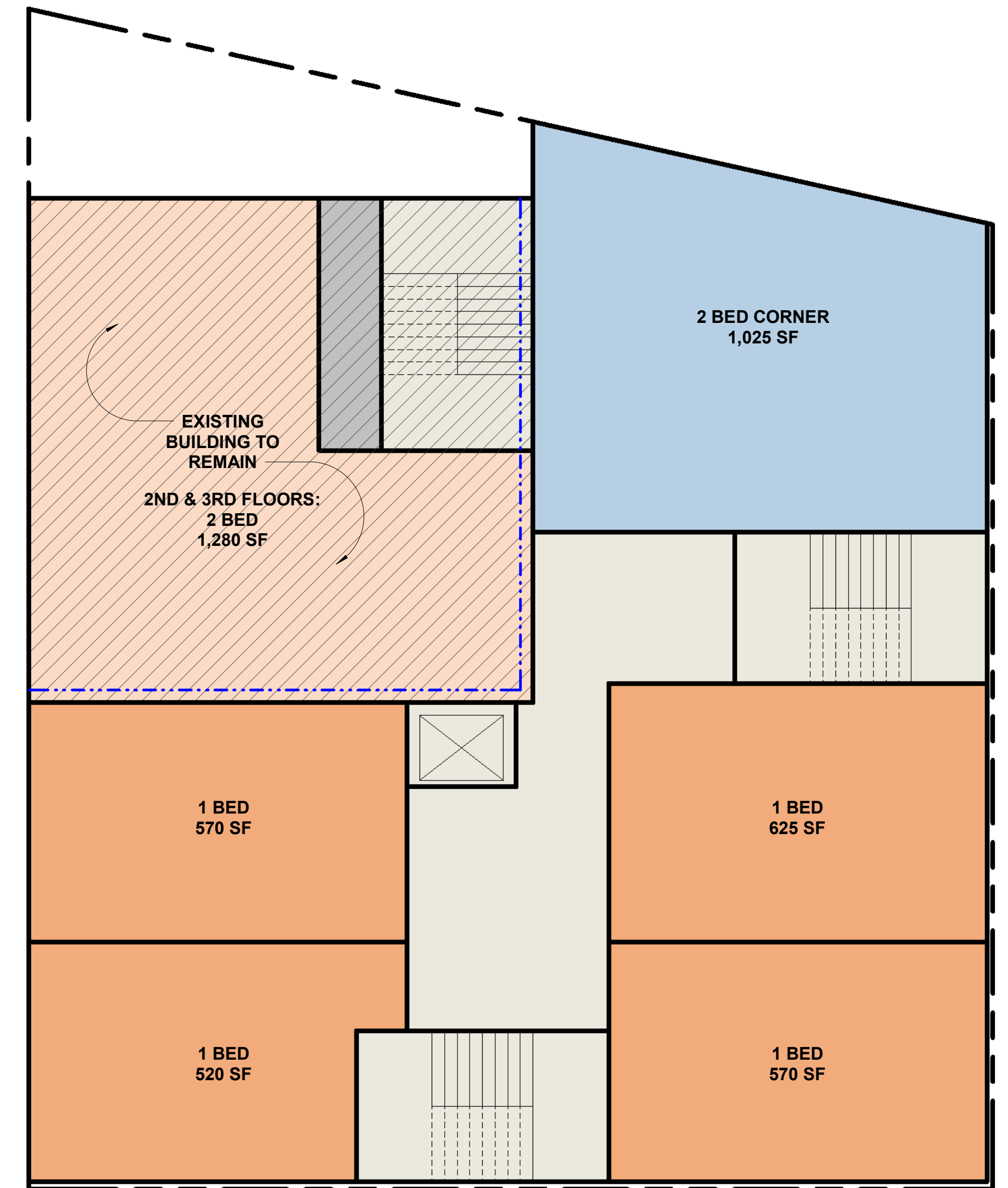
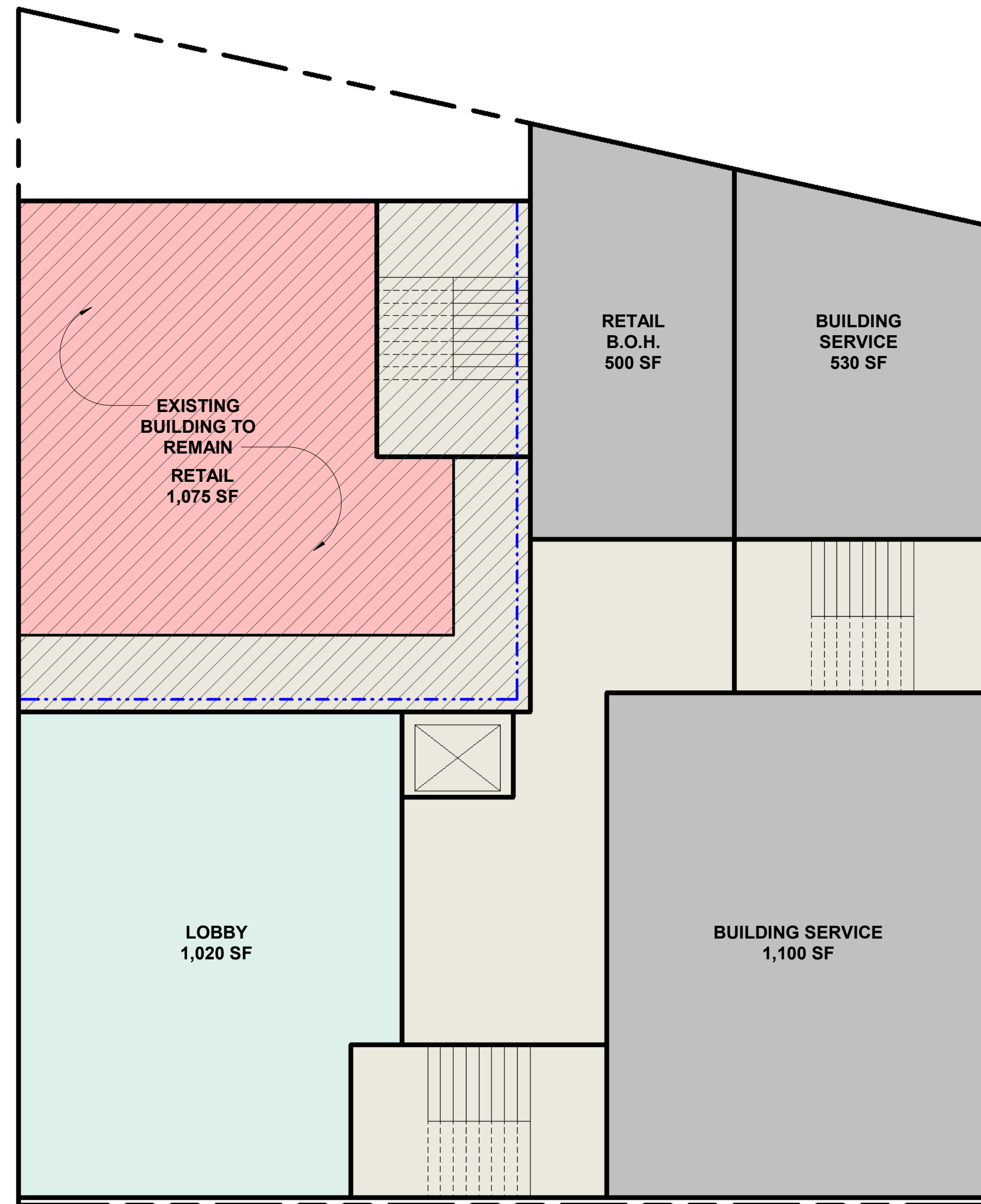
A WINDOW DETAIL AT BRICK
SCALE: 3" = 1'-0"



B WINDOW DETAIL AT FIBER CEMENT
SCALE: 3" = 1'-0"



EXISTING 3-STORY BUILDING + 4-STORY NEW ABOVE				NEW 7-STORY BUILDING			
UNIT TYPE	QUANTITY	MIX	GSF	UNIT TYPE	QUANTITY	MIX	GSF
FIRST FLOOR RETAIL	1,075 SF		1,600 SF	FIRST FLOOR LOBBY/ AMENITY	1,020 SF		5,165 SF
SECOND AND THIRD FLOORS TWO BEDROOM	1 UNIT		1,600 SF	SECOND AND THIRD FLOORS ONE BEDROOM TWO BEDROOM	4 UNITS 1 UNIT		5,165 SF
FOURTH THRU SEVENTH FLOORS ONE BEDROOM TWO BEDROOM	1 UNIT 1 UNIT		2,000 SF	FOURTH THRU SEVENTH FLOORS ONE BEDROOM TWO BEDROOM	4 UNITS 1 UNIT		5,165 SF
TOTAL ONE BEDROOMS	4 UNITS	40%		TOTAL ONE BEDROOMS	24 UNITS	80%	
TOTAL TWO BEDROOMS	6 UNITS	60%		TOTAL TWO BEDROOMS	6 UNITS	20%	
TOTAL UNITS	10 UNITS			TOTAL UNITS	30 UNITS		
TOTAL BUILDING SF			12,800 SF	TOTAL BUILDING SF			36,155 SF



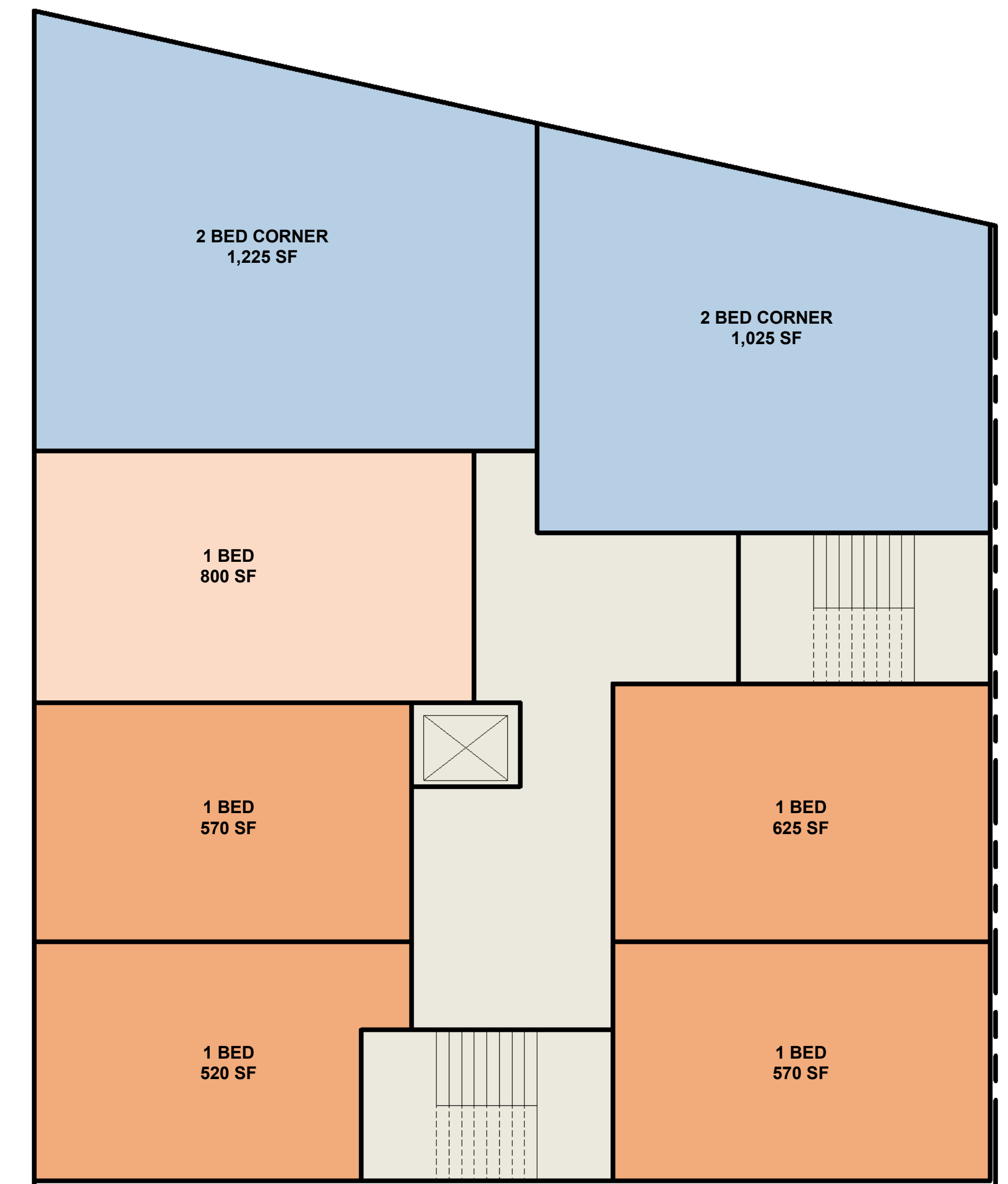
1 SITE PLAN - OPTION 2
SCALE: 1" = 20'-0"

2 FIRST FLOOR - OPTION 2
SCALE: 1/8" = 1'-0"

3 SECOND AND THIRD FLOOR PLAN - OPTION 2
SCALE: 1/8" = 1'-0"



EXISTING 3-STORY BUILDING + 4-STORY NEW ABOVE				NEW 7-STORY BUILDING			
UNIT TYPE	QUANTITY	MIX	GSF	UNIT TYPE	QUANTITY	MIX	GSF
FIRST FLOOR RETAIL	1,075 SF		1,600 SF	FIRST FLOOR LOBBY/ AMENITY	1,020 SF		5,165 SF
SECOND AND THIRD FLOORS TWO BEDROOM	1 UNIT		1,600 SF	SECOND AND THIRD FLOORS ONE BEDROOM TWO BEDROOM	4 UNITS 1 UNIT		5,165 SF
FOURTH THRU SEVENTH FLOORS ONE BEDROOM TWO BEDROOM	1 UNIT 1 UNIT		2,000 SF	FOURTH THRU SEVENTH FLOORS ONE BEDROOM TWO BEDROOM	4 UNITS 1 UNIT		5,165 SF
TOTAL ONE BEDROOMS	4 UNITS	40%		TOTAL ONE BEDROOMS	24 UNITS	80%	
TOTAL TWO BEDROOMS	6 UNITS	60%		TOTAL TWO BEDROOMS	6 UNITS	20%	
TOTAL UNITS	10 UNITS			TOTAL UNITS	30 UNITS		
TOTAL BUILDING SF			12,800 SF	TOTAL BUILDING SF			36,155 SF



① FOURTH THRU SEVENTH FLOOR PLAN - OPTION 2
SCALE: 1/8" = 1'-0"

