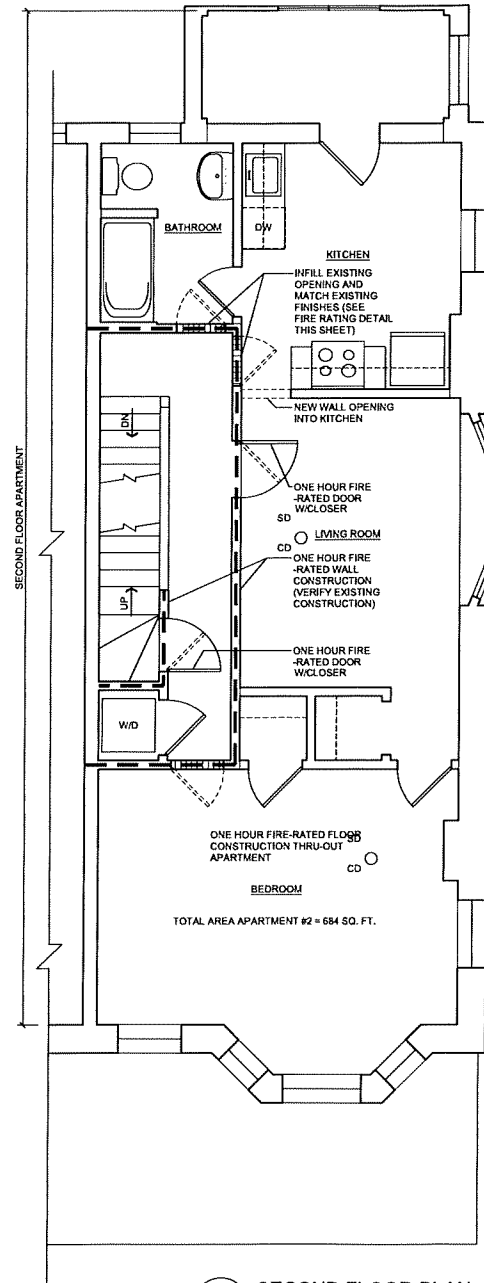
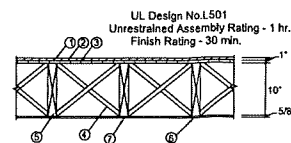


4 THIRD FLOOR PLAN  
SCALE: 1/4" = 1'-0"

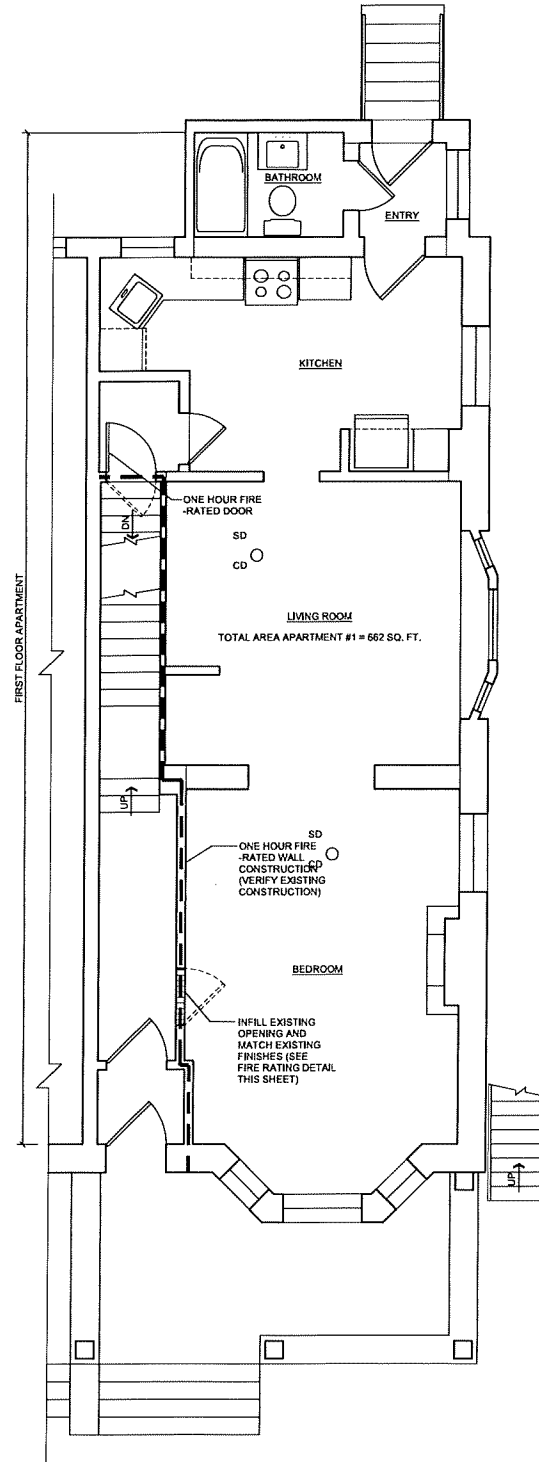


3 SECOND FLOOR PLAN  
SCALE: 1/4" = 1'-0"

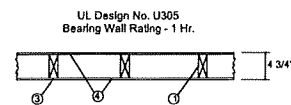


1. Finish flooring - 1 by 3 in. T & G and end matched; laid perpendicular to joists; or 15/32 in. thick plywood or oriented strand board (OSB), min. grade "Underlayment" or "Single Floor" or "APA Rated Sturd-Floor" T&G panels marked Exposure 1 or exterior glue and conforming with PS 1, PS 2, or APA Specifications PRP-108. Face grain of plywood or strength axis of panel to be perpendicular to joists with joints staggered.
2. Vapor Barrier - Commercial, rosin-sized building paper, 0.010 in. thick
3. Subflooring - 1 by 6 in. T & G, fastened diagonally to joists; or 15/32 in. thick plywood or oriented strand board (OSB), min. grade "Underlayment" or "Single Floor" or "APA Rated Sturd-Floor" T&G panels marked Exposure 1 or exterior glue and conforming with PS 1, PS 2, or APA Specifications PRP-108. Face grain of plywood or strength axis of panel to be perpendicular to joists with joints staggered.
4. Cross Bridging - 1 by 3 in.
5. Wood Joists - 2 by 10 in. spaced 16 in. OC, firestopped.
6. Wallboard, Gypsum - 5/8 in. thick. Sheets of wallboard (or lath) installed with long dimension perpendicular to joists and fastened to each joist with 1 7/8 in. long, 6d cement coated nails spaced 6 in. O.C.
7. Finishing System - Fiber tape embedded in compound over joints and exposed nail heads, covered with compound with edges of compound feathered out. As an alternate, nom. 3/32 in. thick gypsum veneer plaster may be applied to the entire surface of Classified veneer baseboard. Joint reinforced.

\* Bearing the UL Classification Marking



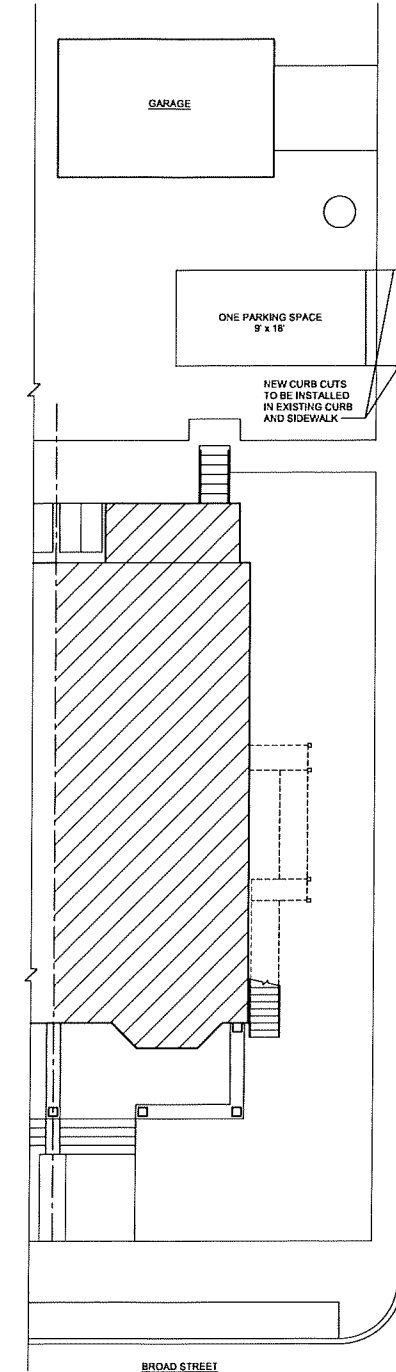
2 FIRST FLOOR PLAN  
SCALE: 1/4" = 1'-0"



1. Wood Studs - 2 x 4 Wood studs at 16" O.C.
2. Nailheads - Exposed or covered with joint compound.
3. Joints - Exposed or covered with fiber tape and joint compound, except where required for specific edge configuration. For tapered, rounded-edge wallboard, joints covered with joint compound or fiber tape and joint compound.
4. Wallboard, Gypsum - 5/8" thick wallboard paper or vinyl surfaced, with beveled, square, or tapered edges, applied either horizontally or vertically. Wallboard nailed 7" O.C. with 6d cement coated nails 1 7/8" long, 0.0915" shank diam. and 1/4" diam. heads. When used in widths of other than 48", wallboard is to be installed horizontally.

- CONSTRUCTION TYPE - 5B
- NEW INTERIOR WALLS: 2 x 4 WOOD STUDS @ 16" O.C. 1/2" GYPSUM BOARD BOTH SIDES
- NEW 1-HR FIRE-RATED WALLS: SEE UL U305 DETAIL

DESIGN LOADS  
ROOF:  
LIVE LOAD: 30 PSF  
DEAD LOAD: 15 PSF  
TOTAL: 45 PSF  
FLOOR:  
LIVE LOAD: 40 PSF  
DEAD LOAD: 10 PSF  
TOTAL: 50 PSF



1 SITE PLAN  
SCALE: 1/8" = 1'-0"

## 2018 International Existing Building Code

PROJECT NARRATIVE: TO PROPOSE TO DIVIDE THE EXISTING HOUSE INTO THREE SEPARATE APARTMENTS WITH ONE UNIT ON EACH FLOOR. THE FIRST FLOOR APARTMENT LAYOUT WILL BE ESSENTIALLY THE SAME WITH A RENOVATED KITCHEN. THE SECOND FLOOR APARTMENT WILL HAVE A BEDROOM IN THE FRONT, A LIVING ROOM IN THE MIDDLE, AND A KITCHEN AND BATH ADDED IN THE REAR. A COMMON LAUNDRY CLOSET WILL BE ADDED OFF THE CORRIDOR. THE THIRD FLOOR APARTMENT WILL HAVE A BEDROOM IN THE FRONT, KITCHEN LIVING ROOM IN THE MIDDLE, AND A BATH IN THE REAR. FIRE-RATED CORRIDORS WILL BE CREATED AROUND THE STAIRS BY VERIFYING A 1-HR. FIRE RATING FOR THE WALLS AND INSTALLING FIRE-RATED DOORS. A 1-HR. FIRE RATING IS ALSO REQUIRED AT THE FLOORS BETWEEN UNITS.

REVISIONS	BY
1	SG
2	
3	
4	
5	
6	
7	
8	
9	
10	

Copyright © 2022  
Reproduction of material and/or quotations shown or depicted on plans or in specifications without permission of Gouck Architects violates the copyright laws of the United States and will be subject to legal prosecution.  
DO NOT SCALE DRAWINGS! In all cases within dimensions shall take precedence over all other scaled dimensions. Contractors shall verify and be notified of any variations on the site contrary to these documents before installation begins.

**GOUCK ARCHITECTS**  
STEWART J. GOUCK  
REGISTERED ARCHITECT  
1304 Hamilton Street, Allentown, PA 18102  
(610) 439-4818 info@gouckarchitects.com



Proposed:  
**Apartments**  
222 E. Broad Street  
Bethlehem, PA

DRAWN JK
CHECKED SG
DATE 7-26-2022
SCALE AS NOTED
JOB NO. 22104
FLOOR PLAN AND NOTES
<b>A-1</b>
OF 1 SHEETS

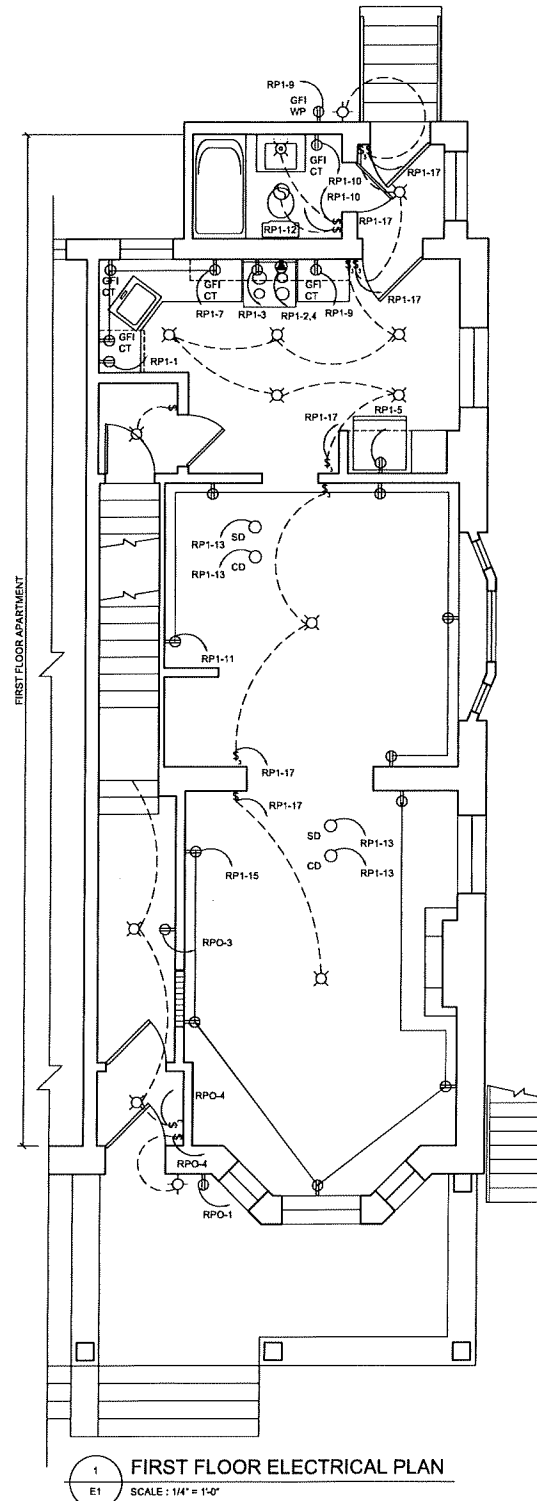
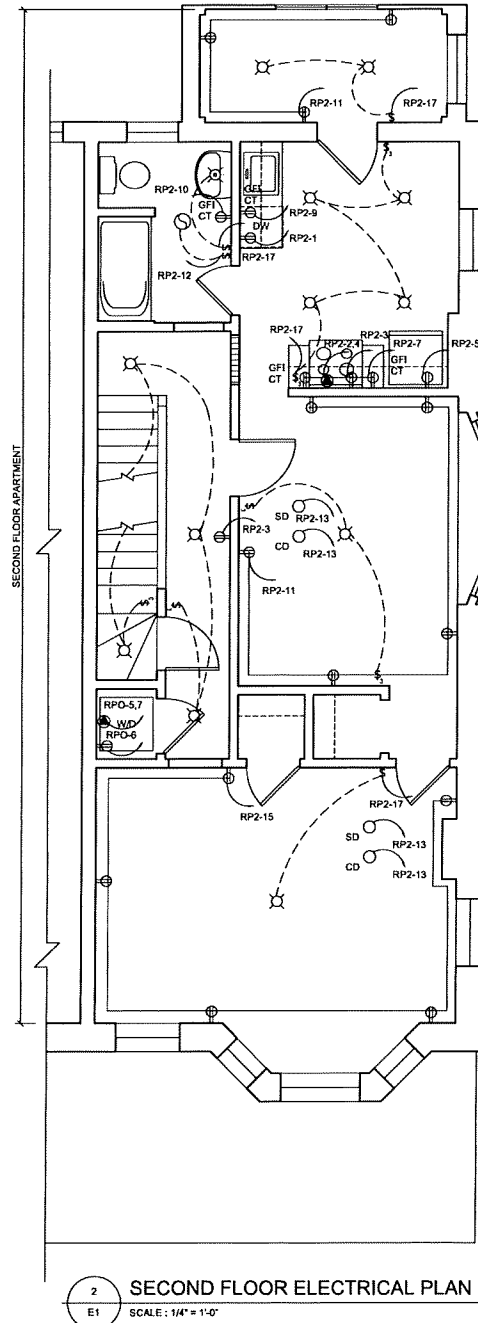
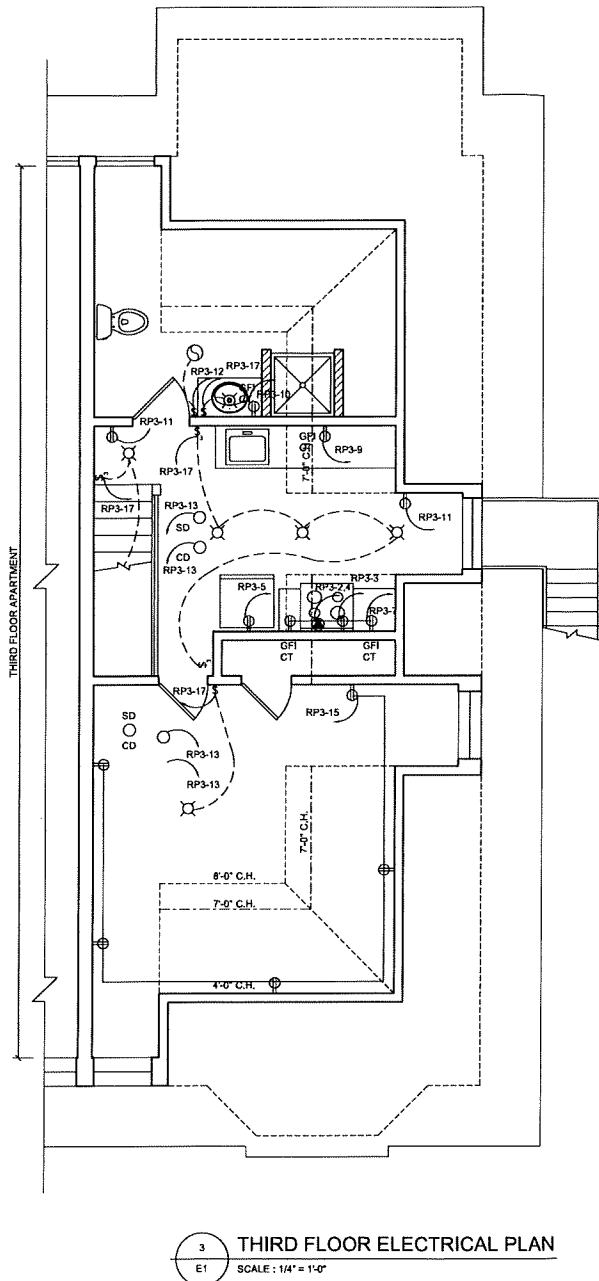


EXISTING TENANT PANEL		240/120 VOLTS		NEMA TYPE-1		100 AMP. MAINS	
PANELBOARD - RP1		SOLID NEUTRAL		A.I.C. SYM: 10,000		100 AMO MLO	
		GROUND BUS		MOUNTING: FLUSH		SQUARE D	
		1-PHASE, 3-WIRE				24 POLES	
LOAD SERVED	GRD. WIRE	WIRE	TRIP	POLE	LOAD (KVA)	POLE NO.	LOAD SERVED
DISHWASHER	#12	#12	20	1	1.00	1	ELECTRIC RANGE
RANGE HOOD	#12	#12	20	1	1.00	3	
REFRIGERATOR	#12	#12	20	1	1.00	5	
KITCHEN GFI RECEPTACLES	#12	#12	20	1	1.00	7	
KITCHEN GFI RECEPTACLES	#12	#12	20	1	1.00	9	
LIVING ROOM RECEPTACLES	#12	#12	20	1	1.00	11	
SMOKE/CO DETECTORS	#14	#14	15	1	0.10	13	
BED ROOM RECEPTACLES	#12	#12	20	1	1.00	15	
LIGHTING CIRCUIT	#12	#12	20	1	0.50	17	
						19	
						21	
						23	
						24	
					7.6		
						15.7	
MAX LOAD (NO DIVERSITY) = 26.70 KVA							
MAX DEMAND LOAD (W/ DIVERSITY) = 15.0 KVA (62.4 A)							

EXISTING TENANT PANEL		240/120 VOLTS		NEMA TYPE-1		100 AMP. MAINS	
PANELBOARD - RP2		SOLID NEUTRAL		A.I.C. SYM: 10,000		100 AMO MLO	
		GROUND BUS		MOUNTING: FLUSH		SQUARE D	
		1-PHASE, 3-WIRE				24 POLES	
LOAD SERVED	GRD. WIRE	WIRE	TRIP	POLE	LOAD (KVA)	POLE NO.	LOAD SERVED
DISHWASHER	#12	#12	20	1	1.00	1	ELECTRIC RANGE
RANGE HOOD	#12	#12	20	1	1.00	3	
REFRIGERATOR	#12	#12	20	1	1.00	5	
KITCHEN GFI RECEPTACLES	#12	#12	20	1	1.00	7	
KITCHEN GFI RECEPTACLES	#12	#12	20	1	1.00	9	
LIVING ROOM RECEPTACLES	#12	#12	20	1	1.00	11	
SMOKE/CO DETECTORS	#14	#14	15	1	0.10	13	
BED ROOM RECEPTACLES	#12	#12	20	1	1.00	15	
LIGHTING CIRCUIT	#12	#12	20	1	0.50	17	
						19	
						21	
						23	
						24	
					7.6		
						15.7	
MAX LOAD (NO DIVERSITY) = 26.70 KVA							
MAX DEMAND LOAD (W/ DIVERSITY) = 15.0 KVA (62.4 A)							

EXISTING TENANT PANEL		240/120 VOLTS		NEMA TYPE-1		100 AMP. MAINS	
PANELBOARD - RP3		SOLID NEUTRAL		A.I.C. SYM: 10,000		100 AMO MLO	
		GROUND BUS		MOUNTING: FLUSH		SQUARE D	
		1-PHASE, 3-WIRE				24 POLES	
LOAD SERVED	GRD. WIRE	WIRE	TRIP	POLE	LOAD (KVA)	POLE NO.	LOAD SERVED
DISHWASHER	#12	#12	20	1	1.00	1	ELECTRIC RANGE
RANGE HOOD	#12	#12	20	1	1.00	3	
REFRIGERATOR	#12	#12	20	1	1.00	5	
KITCHEN GFI RECEPTACLES	#12	#12	20	1	1.00	7	
KITCHEN GFI RECEPTACLES	#12	#12	20	1	1.00	9	
LIVING ROOM RECEPTACLES	#12	#12	20	1	1.00	11	
SMOKE/CO DETECTORS	#14	#14	15	1	0.10	13	
BED ROOM RECEPTACLES	#12	#12	20	1	1.00	15	
LIGHTING CIRCUIT	#12	#12	20	1	0.50	17	
						19	
						21	
						23	
						24	
					7.6		
						15.7	
MAX LOAD (NO DIVERSITY) = 26.70 KVA							
MAX DEMAND LOAD (W/ DIVERSITY) = 15.0 KVA (62.4 A)							

EXISTING TENANT PANEL		240/120 VOLTS		NEMA TYPE-1		100 AMP. MAINS	
PANELBOARD - RPO		SOLID NEUTRAL		A.I.C. SYM: 10,000		100 AMO MLO	
		GROUND BUS		MOUNTING: FLUSH		SQUARE D	
		1-PHASE, 3-WIRE				24 POLES	
LOAD SERVED	GRD. WIRE	WIRE	TRIP	POLE	LOAD (KVA)	POLE NO.	LOAD SERVED
EXTERIOR GFI RECEPTACLES	#12	#12	20	1	1.00	1	SMOKE/CO DETECTORS
INTERIOR RECEPTACLES	#12	#12	20	1	1.00	3	LIGHTING CIRCUIT
DRYER	#10	#10	30	2	4.40	5	WASHER
						7	
						9	
						11	
						13	
						15	
						17	
						19	
						21	
						23	
						24	
					6.4		
						1.6	
MAX LOAD (NO DIVERSITY) = 26.70 KVA							
MAX DEMAND LOAD (W/ DIVERSITY) = 15.0 KVA (62.4 A)							



#### ELECTRICAL LEGEND

G.C.	GENERAL CONTRACTOR	S	SINGLE POLE WALL SWITCH, 120VAC
P.C.	PLUMBING CONTRACTOR	S <sub>3</sub>	THREE-WAY SWITCH, 120VAC
H.C.	HVAC CONTRACTOR	—	HARDWIRE CIRCUIT
E.C.	ELECTRICAL CONTRACTOR	—	DUPLEX RECEPTACLE, NEMA 5-20R
—	FLUORESCENT LIGHT FIXTURE	—	AS ABOVE, BUT QUAD OUTLET
OR	LED LIGHT FIXTURE	—	SPECIAL PURPOSE RECEPTACLE, E.C. VERIFY REQUIREMENTS
—	HOMERUN TO PANEL	WP	WEATHERPROOF
—	SAME CIRCUIT, SWITCHED SEPARATELY	GFI	GROUND FAULT CIRCUIT INTERRUPTER
—	THREE CONDUCTOR	CT	COUNTERTOP HEIGHT
—	MANUAL MOTOR STARTER	—	PANELBOARD
—	TRACK STYLE LIGHTING	—	75 CFM EXHAUST FAN/LIGHT UNIT
SD	SMOKE DETECTOR	T	THERMOSTAT
CD	CARBON MONOXIDE DETECTOR	—	SAFETY SWITCH
		TV	TELEVISION OUTLET

#### GENERAL ELECTRICAL NOTES

- ALL WORK BE DONE IN ACCORDANCE WITH NFPA 70 AND NEC.
- ELECTRICAL CONTRACTOR SHALL COORDINATE LOCATION OF PANEL WITH OTHER TRADES TO MAINTAIN DEDICATED ELECTRICAL SPACE ABOVE PANEL IN ACCORDANCE WITH NEC.
- THE ELECTRICAL DISTRIBUTION SYSTEM IS BASED ON A FULLY RATED DESIGN. THE ELECTRICAL CONTRACTOR MAY PROVIDE A SERIES-RATED DESIGN AS SELECTED BY THE PANEL MANUFACTURER WITH AN ASSOCIATED COST DEDUCT.
- ALL TENANT WIRING SHALL BE THINWALL COPPER, TYPE NM, UNLESS OTHERWISE NOTED.
- ALL COUNTERTOP RECEPTACLES SHALL BE MOUNTED AT 42\" AFF UNLESS OTHERWISE NOTED.
- ALL ELECTRICAL RECEPTACLES TO BE MOUNTED AT 20\" AFF UNLESS OTHERWISE NOTED.
- MAIN DISCONNECT FOR ALL HVAC EQUIPMENT SHALL BE PROVIDED BY THE ELECTRICAL CONTRACTOR.
- ALL ELECTRICAL RECEPTACLES INSTALLED IN LIVING ROOMS, DINING ROOMS, BEDROOMS, CLOSETS, HALLWAYS, KITCHENS, LAUNDRY AREAS OR SIMILAR ROOMS SHALL BE PROTECTED BY LISTED ARC-FAULT CIRCUIT INTERRUPTERS IN ACCORDANCE WITH ARTICLE 210.12 OF THE NEC.
- PROVIDE A RECEPTACLE FOR THE DISHWASHER. EC SHALL PROVIDE PLUG AND CORD.
- PROVIDE DEDICATED CIRCUIT TO DUPLEX RECEPTACLE IN CABINET ABOVE RANGE FOR MICROWAVE/HOOD.
- ALL RECEPTACLES SHALL BE TAMPER RESISTANT.
- ALL ELECTRICAL RECEPTACLES, SWITCHES, THERMOSTATS, ETC. IN ADA COMPLIANT ROOMS SHALL BE MOUNTED IN ACCORDANCE WITH ICC/ANSI A117.1 STANDARDS.
- ELECTRICAL PANEL SHALL BE MOUNTED AT ADA COMPLIANT HEIGHT WITH THE TOP TWO BREAKERS NO MORE THAN 48\" AFF.
- PROVIDE RECEPTACLE FOR ELECTRIC RANGE. EC SHALL PROVIDE PLUG AND CORD. ALL ADA UNITS TO HAVE CONTROL SWITCH INSTALLED AT 44\" AFF.
- EC SHALL PROVIDE 120V POWER FEED FROM LIGHTING SWITCHES FOR CONTROL OF BATHROOM EXHAUST FAN.
- SMOKE DETECTORS WITHIN THE APARTMENT UNITS SHALL BE INTERCONNECTED AND PROVIDED WITH BATTERY BACKUP.
- FIRE ALARM DESIGN IS NOT PART OF THE ELECTRICAL DESIGN. THE FIRE ALARM CONTRACTOR SHALL PROVIDE SIGNED AND SEALED FIRE ALARM SHOP DRAWINGS.

REVISIONS	BY
1	SG
2	
3	
4	
5	
6	
7	
8	
9	
10	

Copyright © 2022 Gouck Architects  
 Reproduction of material and/or equations shown or depicted on plans or in specifications without permission of Gouck Architects violates the copyright laws of the United States and will be subject to legal prosecution.  
 DO NOT SCALE DRAWINGS! In all cases, written dimensions shall take precedence over all other scaled dimensions. Contractors shall verify and be notified of any variations on the site contrary to these documents before installation begins.

**GOUCK ARCHITECTS**  
 STEWART J. GOUCK  
 REGISTERED ARCHITECT  
 1304 Hamilton Street, Allentown, PA 18102  
 (610) 439-4818 info@gouckarchitects.com

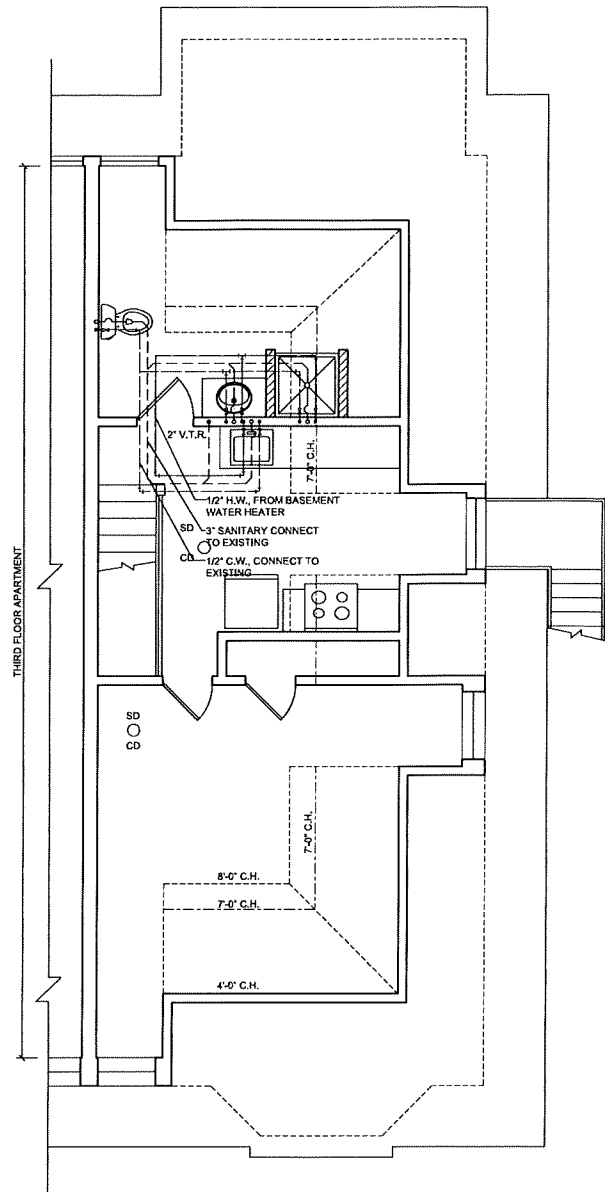


Proposed:  
**Apartments**  
 222 E. Broad Street  
 Bethlehem, PA

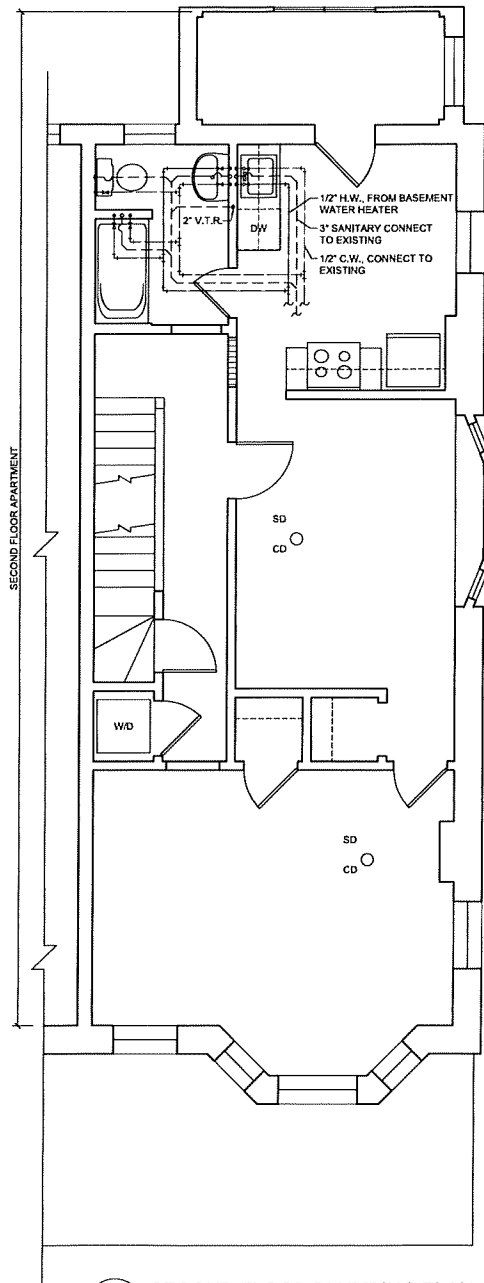
DRAWN	JK
CHECKED	SG
DATE	7-26-2022
SCALE	AS NOTED
JOB NO.	22104
FLOOR PLAN AND NOTES	

**E-1**  
 OF 1 SHEETS

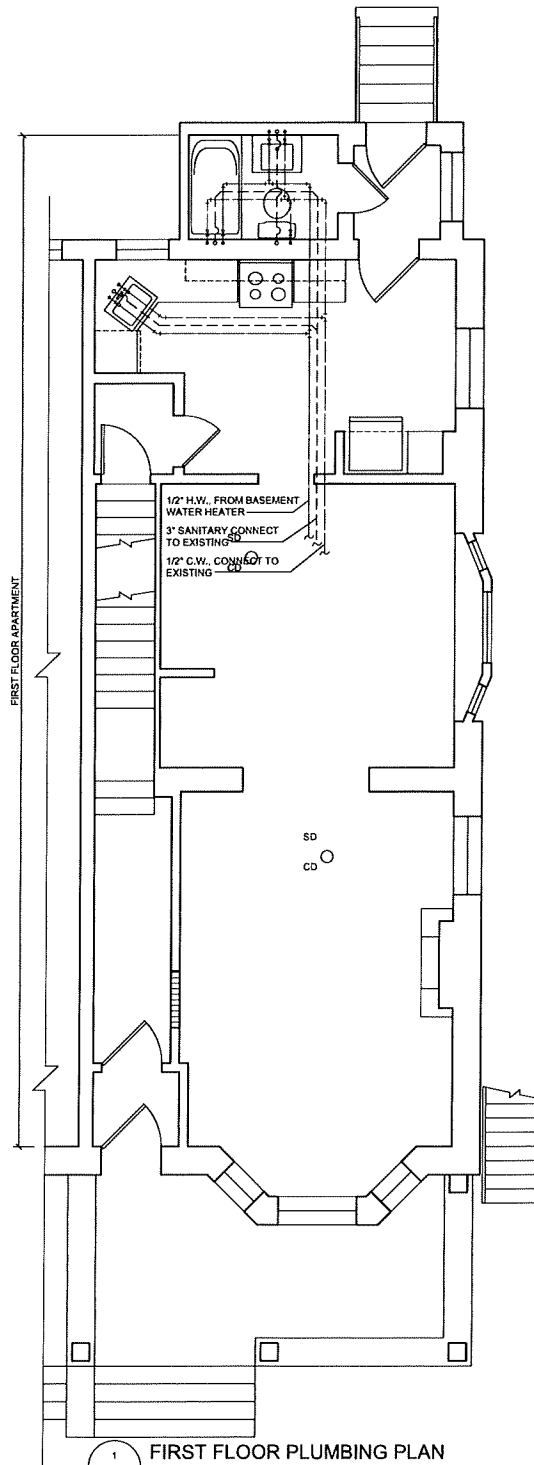




3 THIRD FLOOR PLUMBING PLAN  
P1 SCALE: 1/4" = 1'-0"



2 SECOND FLOOR PLUMBING PLAN  
P1 SCALE: 1/4" = 1'-0"



1 FIRST FLOOR PLUMBING PLAN  
P1 SCALE: 1/4" = 1'-0"

### SYMBOLS & ABBREVIATIONS

W OR S	WASTE OR SANITARY PIPING	FD	FLOOR DRAIN
V	VENT PIPING	FS	FLOOR SINK
CW	COLD WATER PIPING	TV	TRAP VALVE
HW	HOT WATER PIPING	CO	FLOOR CLEAN OUT
G	GAS PIPING	WCO	WALL CLEAN OUT
+	UNION	TEE	TEE
		ELBOW	ELBOW
		GSV	GAS VALVE
		FSV	FIXTURE STOP
		VTR	VENT THRU ROOF

### PLUMBING NOTES

- SEAL OR CAP OPENINGS IN PIPES UNTIL FINAL CONNECTIONS ARE MADE.
- INSTALL SUFFICIENT UNIONS IN PIPING SYSTEMS TO ALLOW SERVICE OF ANY CONNECTED EQUIPMENT WITHOUT BREAKING FITTINGS OR CUTTING PIPING CONNECTIONS.
- DIMENSIONS AND PIPE SIZES ARE IN INCHES UNLESS NOTED OTHERWISE.
- DO NOT RUN PIPING OR ELECTRICAL EQUIPMENT.
- CONNECT HW, CW, VENT, SAN & W LINES TO FIXTURES IN ACCORDANCE WITH SIZES INDICATED ON THE PLUMBING FIXTURE SCHEDULE WITH A 2" MINIMUM SIZE FOR SANITARY PIPING BELOW FLOOR.
- SLOPE SANITARY PIPING SIZES 3" AND LARGER 1/8" PER FOOT, AND SMALLER PIPES 1/4" PER FOOT, UNLESS NOTED OTHERWISE.
- PROVIDE GAS SHUTOFF VALVE AND DIRT LEG AT ALL EQUIPMENT CONNECTIONS.
- PROVIDE SHUTOFF VALVES FOR ALL DOMESTIC WATER CONNECTIONS TO FIXTURES AND EQUIPMENT.
- COORDINATE LOCATIONS OF ALL PIPING AND DEVICES BEFORE INSTALLATION WITH THE WORK OF OTHER TRADES. WHERE A CONFLICT IN CLEARANCES OCCURS, OBTAIN CLARIFICATION FROM THE ENGINEER, ARCHITECT, OR OWNER. INSTALL WHATEVER ADDITIONAL PIPING, FITTINGS, ETC. ARE REQUIRED FOR A COMPLETE SYSTEM AT NO ADDITIONAL COST TO THE CONTRACT.
- TEST INSTALLATIONS IN ACCORDANCE WITH THE APPROPRIATE CODE REQUIREMENTS AS EACH PORTION IS INSTALLED. FLUSH NEW DOMESTIC WATER PIPING UNTIL IT RUNS CLEAR, THEN FILL WITH 50PPM CHLORINE FOR 24 HOURS, THEN PURGE WITH FRESH WATER AND TEST FOR BACTERIAL CONTENT AND REPEAT IF NECESSARY.
- VERIFY MOUNTING HEIGHTS OF EQUIPMENT AND FIXTURES WITH ARCHITECTURAL DRAWINGS, AUTHORITY HAVING JURISDICTION, AND THE OWNER.

REVISIONS	BY
CODE COMMENTS 10-11-2022	SG

Copyright © Gouck Architects 2022  
Reproduction of material and/or specifications shown or depicted on plans or in specifications without permission of Gouck Architects violates the copyright laws of the United States and will be subject to legal prosecution.  
DO NOT SCALE DRAWINGS! In all cases within dimensions shall take precedence over all other scaled dimensions. Contractors shall verify and be notified of any variations on the site contrary to these documents before installation begins.

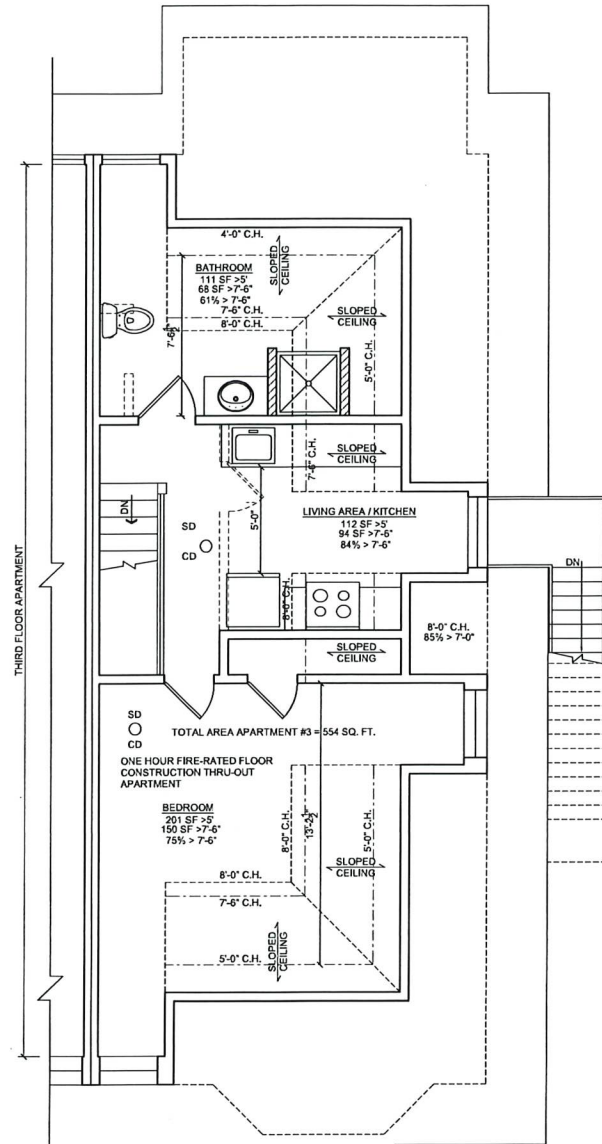
**GOUCK ARCHITECTS**  
STEWART J. GOUCK  
REGISTERED ARCHITECT  
1304 Hamilton Street, Allentown, PA 18102  
(610) 439-4818 info@gouckarchitects.com



Proposed:  
**Apartments**  
222 E. Broad Street  
Bethlehem, PA

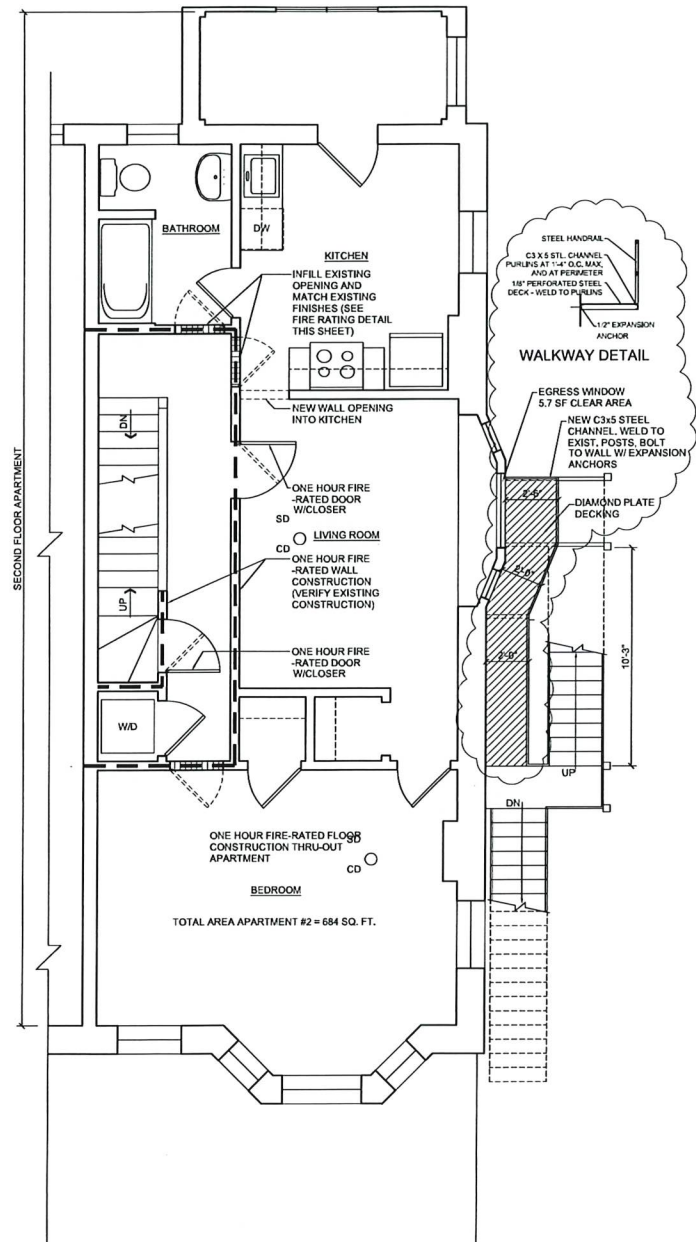
DRAWN JK
CHECKED SG
DATE 7-26-2022
SCALE AS NOTED
JOB NO. 22104
FLOOR PLAN AND NOTES
P-1
OF 1 SHEETS





IBC 1207 REQUIREMENTS:  
HABITABLE SPACE- A SPACE IN A BUILDING FOR LIVING, SLEEPING, EATING OR COOKING, BATHROOMS, TOILET ROOMS, HALLS, STORAGE, OR UTILITY SPACES AND SIMILAR AREAS ARE NOT CONSIDERED HABITABLE SPACES.  
1207.2 HABITABLE SPACES SHALL HAVE A CEILING HEIGHT OF NOT LESS THAN 7'-6". BATHROOMS, KITCHEN SHALL HAVE A CEILING HEIGHT NOT LESS THAN 7'-0".  
EX #3 SLOPED CEILINGS - 7'-6" CEILING HEIGHT SHALL BE IN HALF OF THE AREA. ANY AREA LESS THAN 5'-0" SHALL NOT BE INCLUDED IN THE AREA.  
SEE PLAN FOR CALCULATIONS

**THIRD FLOOR PLAN**  
SCALE: 1/4" = 1'-0"

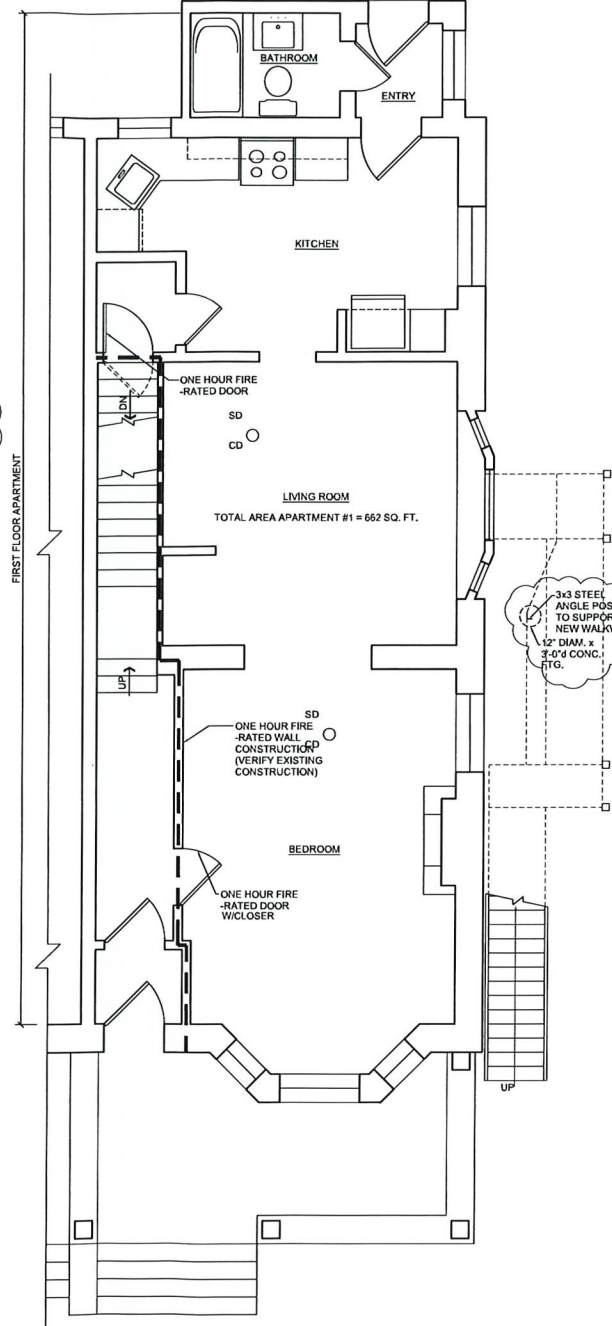


**SECOND FLOOR PLAN**  
SCALE: 1/4" = 1'-0"

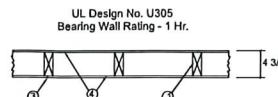


- Finish flooring - 1 by 3 in. T & G and end matched; laid perpendicular to joists; or 19/32 in. thick plywood or oriented strand board (OSB), min. grade "Underlayment" or "Single Floor" or "APA Rated Sturd-Floor" T&G panels marked Exposure 1 or exterior glue and conforming with PS 1, PS 2, or APA Specifications PRP-108. Face grain of plywood or strength axis of panel to be perpendicular to joists with joints staggered.
- Vapor Barrier - Commercial, rosin-sized building paper, 0.010 in. thick
- Subflooring - 1 by 6 in. T & G, fastened diagonally to joists; or 15/32 in. thick plywood or oriented strand board (OSB), min. grade "Underlayment" or "Single Floor" or "APA Rated Sturd-Floor" T&G panels marked Exposure 1 or exterior glue and conforming with PS 1, PS 2, or APA Specifications PRP-108. Face grain of plywood or strength axis of panel to be perpendicular to joists with joints staggered.
- Cross Bridging - 1 by 3 in.
- Wood Joists - 2 by 10 in. spaced 16 in. O.C. firestopped.
- Wallboard, Gypsum - 5/8 in. thick. Sheets of wallboard (or lath) installed with long dimension perpendicular to joists and fastened to each joist with 1 7/8 in. long, 6d cement coated nails spaced 6 in. O.C.
- Finishing System - Fiber tape embedded in compound over joints and exposed nail heads, covered with compound with edges of compound feathered out. As an alternate, nom. 302 in. thick gypsum veneer plaster may be applied to the entire surface of Classified veneer baseboard.

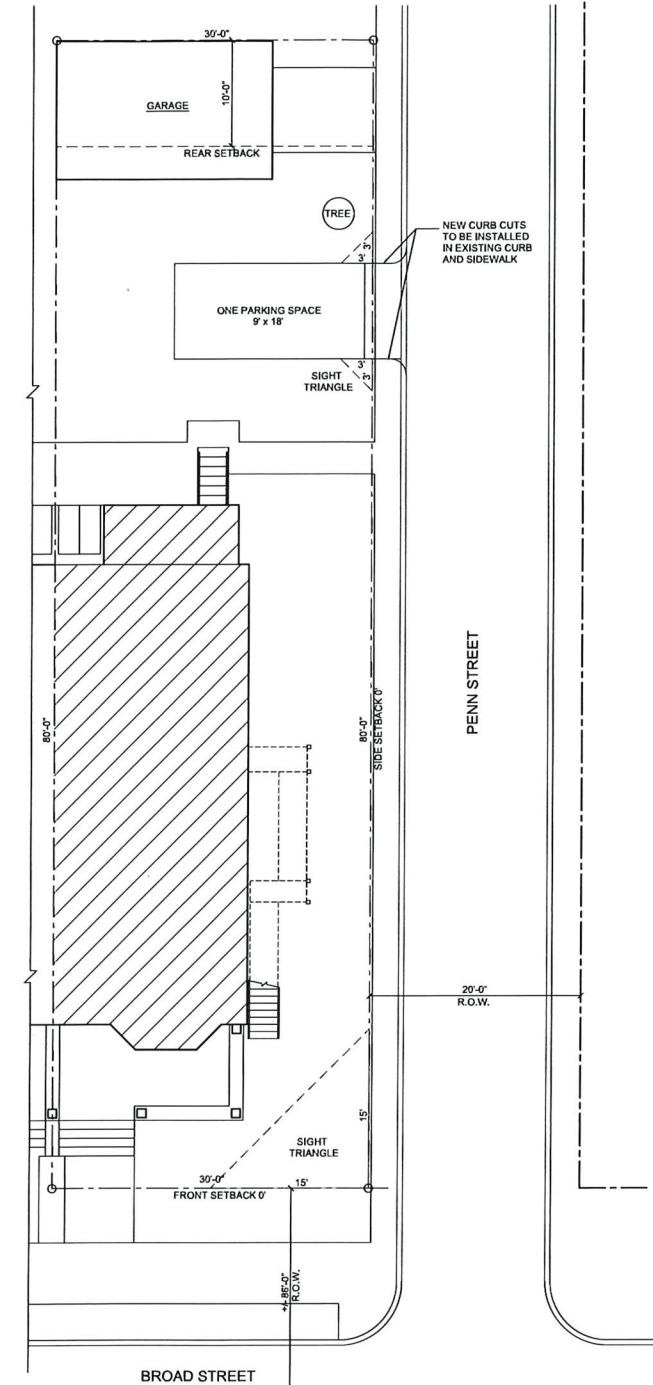
\* Bearing the UL Classification Marking



**FIRST FLOOR PLAN**  
SCALE: 1/4" = 1'-0"



- Wood Studs - 2 x 4 Wood studs at 16" O.C.
- Nailheads - Exposed or covered with joint compound.
- Joints - Exposed or covered with fiber tape and joint compound, except where required for specific edge configuration. For tapered, rounded-edge wallboard, joints covered with joint compound or fiber tape and joint compound.
- Wallboard, Gypsum - 5/8" thick wallboard paper or vinyl surfaced, with beveled, square, or tapered edges, applied either horizontally or vertically. Wallboard nailed 1" O.C. with 6d cement coated nails 1 7/8" long, 0.0915" shank diam. and 1/4" diam. heads. When used in widths of other than 48", wallboard is to be installed horizontally.



**SITE PLAN**  
SCALE: 1/8" = 1'-0"

**2018 International Existing Building Code**

PROJECT NARRATIVE: TO PROPOSE TO DIVIDE THE EXISTING HOUSE INTO THREE SEPARATE APARTMENTS WITH ONE NIT ON EACH FLOOR. THE FIRST FLOOR APARTMENT LAYOUT WILL BE ESSENTIALLY THE SAME WITH A RENOVATED KITCHEN. THE SECOND FLOOR APARTMENT WILL HAVE A BEDROOM IN THE FRONT, A LIVING ROOM IN THE MIDDLE, AND A KITCHEN AND BATH ADDED IN THE REAR. A COMMON LAUNDRY CLOSET WILL BE ADDED OFF THE CORRIDOR. THE THIRD FLOOR APARTMENT WILL HAVE A BEDROOM IN THE FRONT, KITCHEN LIVING ROOM IN THE MIDDLE, AND A BATH IN THE REAR. FIRE-RATED CORRIDORS WILL BE CREATED AROUND THE STAIRS BY VERIFYING A 1-HR. FIRE RATING FOR THE WALLS AND INSTALLING FIRE-RATED DOORS. A 1-HR. FIRE RATING IS ALSO REQUIRED AT THE FLOORS BETWEEN UNITS.

CONSTRUCTION TYPE - 5B  
NEW INTERIOR WALLS: 2 x 4 WOOD STUDS @ 16" O.C. 1/2" GYPSUM BOARD BOTH SIDES  
NEW 1-HR FIRE-RATED WALLS: SEE UL U305 DETAIL

SPRINKLERS ARE REQUIRED, BUT AS PER THE ATTACHED PERFORMANCE COMPLIANCE ANALYSIS, SPRINKLERS WILL NOT NEED TO BE PROVIDED.

DESIGN LOADS  
ROOF:  
LIVE LOAD: 30 PSF  
DEAD LOAD: 10 PSF  
TOTAL: 40 PSF  
FLOOR:  
LIVE LOAD: 40 PSF  
DEAD LOAD: 10 PSF  
TOTAL: 50 PSF

REVISIONS	BY
1 CODE COMMENTS 10-11-2022	SG
2 CODE COMMENTS 1-13-2023	SG
3 CODE COMMENTS 11-29-2024	SG

2022  
Gouck Architects  
Reproduction of material and/or regulations shown or depicted on plans or in specifications without permission of Gouck Architects violates the copyright laws of the United States and will be subject to legal prosecution.  
DO NOT SCALE DRAWINGS! In all cases written dimensions shall take precedence over all other scaled dimensions. Contractors shall verify and be notified of any variations on the site contrary to these documents before installation begins.

**GOUCK ARCHITECTS**  
STEWART J. GOUCK  
REGISTERED ARCHITECT  
1304 Hamilton Street, Allentown, PA 18102  
(610) 439-8818 info@gouckarchitects.com



Proposed:  
**Apartments**  
222 E. Broad Street  
Bethlehem, PA

DRAWN	JK
CHECKED	SG
DATE	7-28-2022
SCALE	AS NOTED
JOB NO.	22104
FLOOR PLAN AND NOTES	

A-1

OF 1 SHEETS