

MIXED-USE BUILDING			
UNIT TYPE	QUANTITY	MIX	GSF
FIRST FLOOR LOBBY/ AMENITY RETAIL	1,330 SF 1,911 SF		6,475 SF
SECOND THRU SEVENTH FLOOR ONE BEDROOM TWO BEDROOM	5 UNITS 2 UNITS		6,475 SF
TOTAL ONE BEDROOMS TOTAL TWO BEDROOMS	30 UNITS 12 UNITS	72% 28%	
TOTAL UNITS TOTAL BUILDING SF	42 UNITS		45,325 SF



1

SITE PLAN  
SCALE: 1" = 20'-0"

20'

10'

0

20'



PROPOSED RENDERING



NEW ST. APARTMENTS  
NORTH STAR CONSTRUCTION  
10.27.25

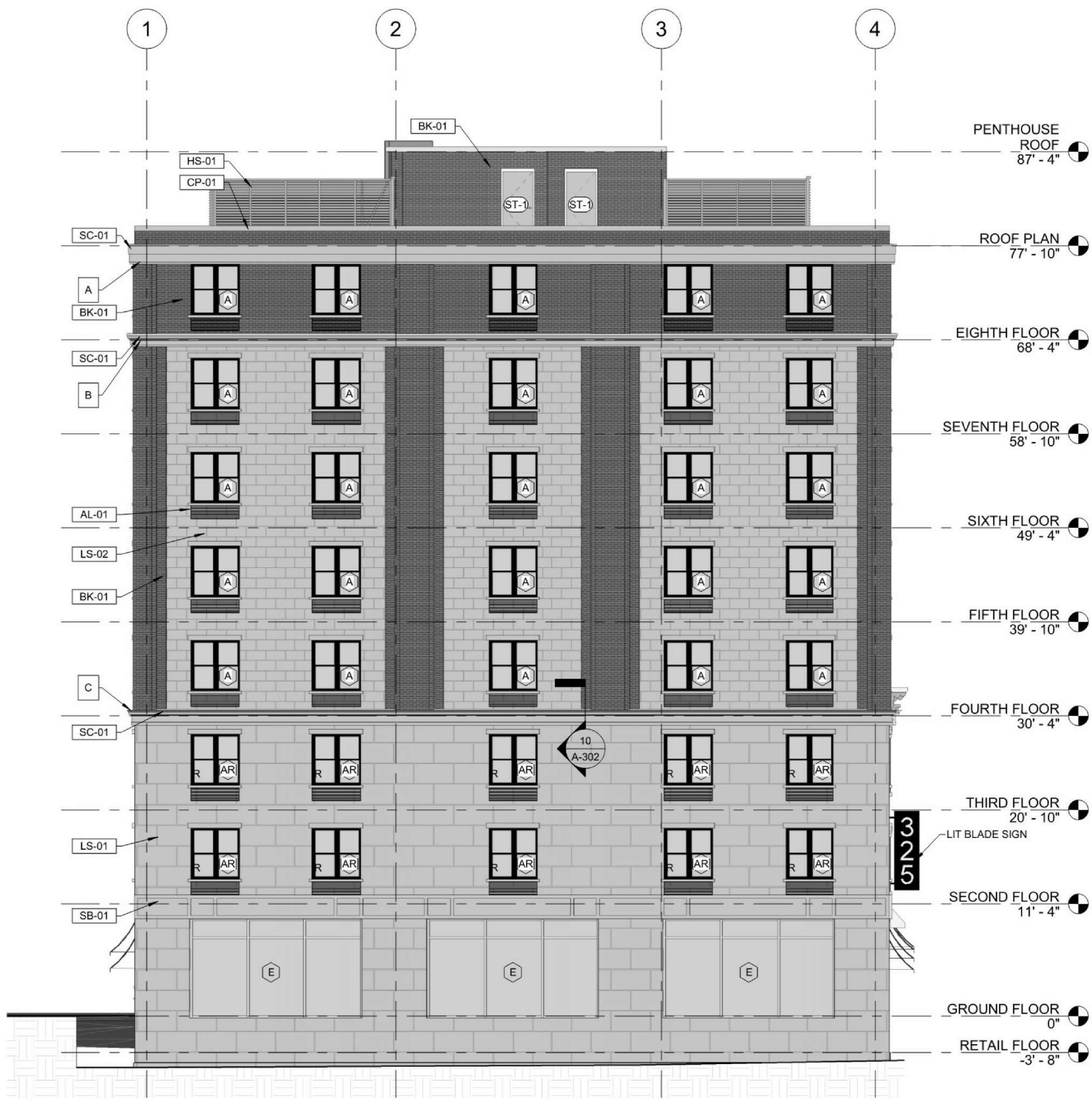


MIXED-USE BUILDING			
UNIT TYPE	QUANTITY	MIX	GSF
FIRST FLOOR LOBBY/ AMENITY RETAIL	1,330 SF 1,911 SF		6,475 SF
SECOND THRU SEVENTH FLOOR ONE BEDROOM TWO BEDROOM	5 UNITS 2 UNITS		6,475 SF
TOTAL ONE BEDROOMS TOTAL TWO BEDROOMS	30 UNITS 12 UNITS	72% 28%	
TOTAL UNITS TOTAL BUILDING SF	42 UNITS		45,325 SF





EXTERIOR MATERIAL LEGEND				
ITEM NO.	MATERIAL	BASIS OF DESIGN	STYLE	COLOR
1	TILE VENEER	-	12" X 24"	WHITE
2	FIBERGLASS BAND	-	-	GRAY
3	STOREFRONT SYSTEM	YKK/KAWNEER	-	ANNOZIED
4	FIBER CEMENT BOARD SIDING	JAMES HARDIE	SMOOTH	PEARL GREY
5	FIBER CEMENT LAP SIDING	JAMES HARDIE	SMOOTH	PEARL GREY
6	THIN BRICK VENEER	-	-	RED
7	THIN BRICK VENEER	-	-	BROWN
8	FIBER CEMENT BOARD TRIM	-	-	GRAY
9	METAL PANEL	ATAS	-	BRONZE
10	COMPOSITE FIBERGLASS WINDOW	ANDERSON 100 SERIES	-	BLACK
11	ALUMINUM LOUVER	-	-	TO MATCH ADJACENT MATERIAL
12	FABRIC AWNING	-	-	BLACK



PREVIOUS ELEVATION



A NORTH ELEVATION - PROPOSED  
SCALE: 1/8" = 1'-0"



EXTERIOR MATERIAL LEGEND				
ITEM NO.	MATERIAL	BASIS OF DESIGN	STYLE	COLOR
1	TILE VENEER	-	12" X 24"	WHITE
2	FIBERGLASS BAND	-	-	GRAY
3	STOREFRONT SYSTEM	YKK/KAWNEER	-	ANNODIZED
4	FIBER CEMENT BOARD SIDING	JAMES HARDIE	SMOOTH	PEARL GREY
5	FIBER CEMENT LAP SIDING	JAMES HARDIE	SMOOTH	PEARL GREY
6	THIN BRICK VENEER	-	-	RED
7	THIN BRICK VENEER	-	-	BROWN
8	FIBER CEMENT BOARD TRIM	-	-	GRAY
9	METAL PANEL	ATAS	-	BRONZE
10	COMPOSITE FIBERGLASS WINDOW	ANDERSON 100 SERIES	-	BLACK
11	ALUMINUM LOUVER	-	-	TO MATCH ADJACENT MATERIAL
12	FABRIC AWNING	-	-	BLACK



PREVIOUS ELEVATION



B WEST ELEVATION - PROPOSED  
SCALE: 1/8" = 1'-0"





EXTERIOR MATERIAL LEGEND				
ITEM NO.	MATERIAL	BASIS OF DESIGN	STYLE	COLOR
①	TILE VENEER	-	12" X 24"	WHITE
②	FIBERGLASS BAND	-	-	GRAY
③	STOREFRONT SYSTEM	YKK/KAWNEER	-	ANNOZIZED
④	FIBER CEMENT BOARD SIDING	JAMES HARDIE	SMOOTH	PEARL GREY
⑤	FIBER CEMENT LAP SIDING	JAMES HARDIE	SMOOTH	PEARL GREY
⑥	THIN BRICK VENEER	-	-	RED
⑦	THIN BRICK VENEER	-	-	BROWN
⑧	FIBER CEMENT BOARD TRIM	-	-	GRAY
⑨	METAL PANEL	ATAS	-	BRONZE
⑩	COMPOSITE FIBERGLASS WINDOW	ANDERSON 100 SERIES	-	BLACK
⑪	ALUMINUM LOUVER	-	-	TO MATCH ADJACENT MATERIAL
⑫	FABRIC AWNING	-	-	BLACK



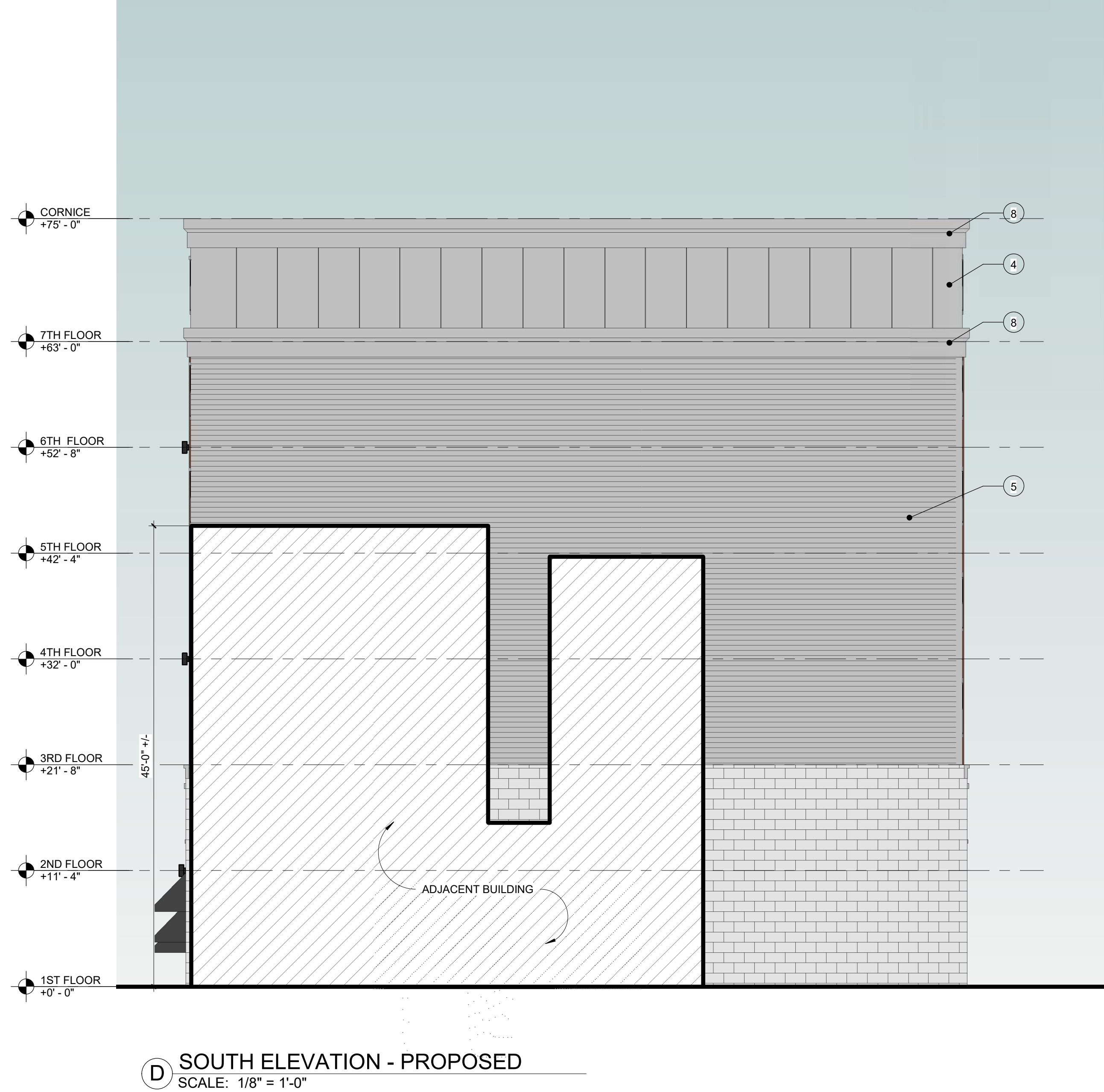
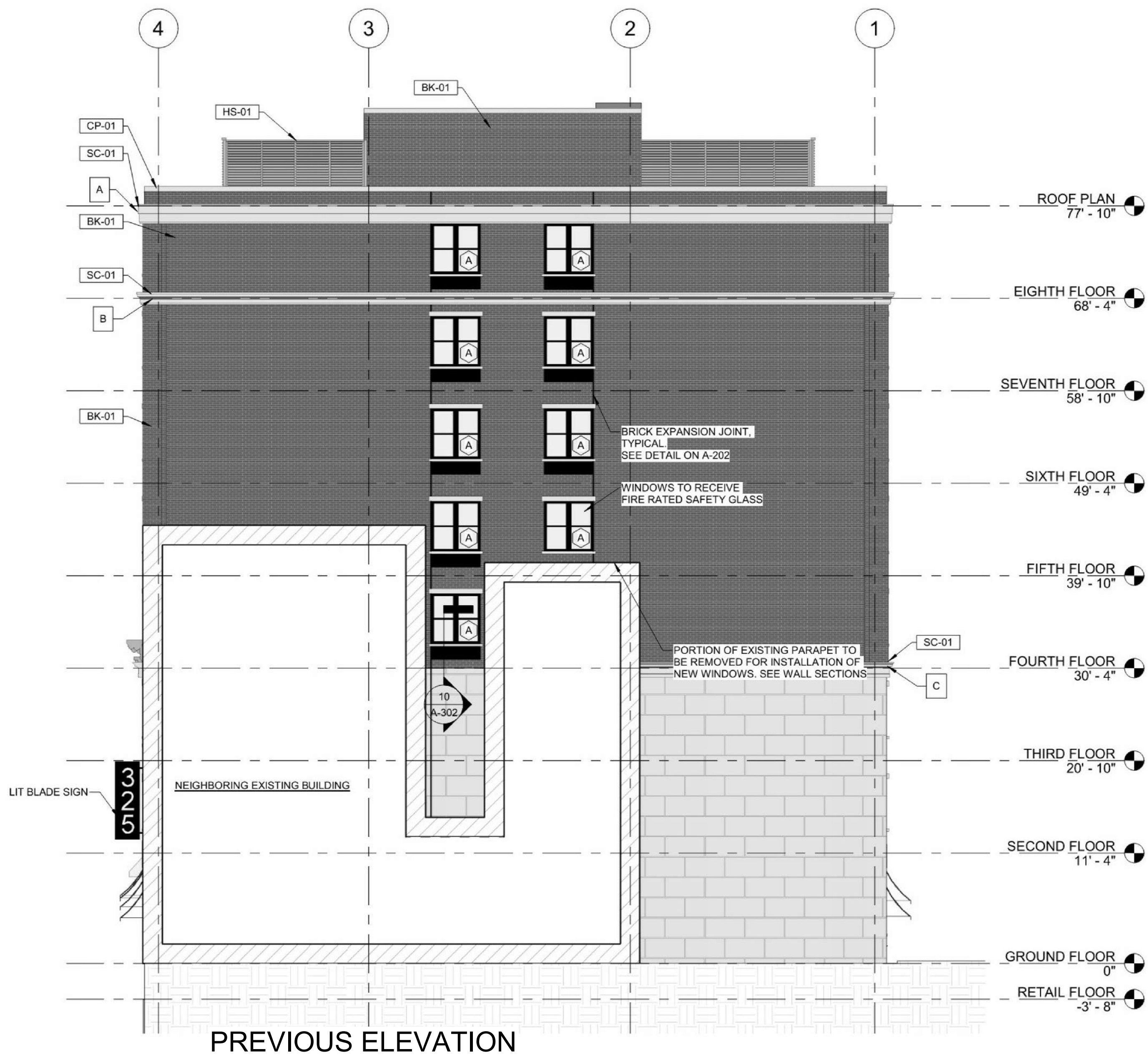
PREVIOUS ELEVATION



**(C) EAST ELEVATION - PROPOSED**  
SCALE: 1/8" = 1'-0"



EXTERIOR MATERIAL LEGEND				
ITEM NO.	MATERIAL	BASIS OF DESIGN	STYLE	COLOR
1	TILE VENEER	-	12" X 24"	WHITE
2	FIBERGLASS BAND	-	-	GRAY
3	STOREFRONT SYSTEM	YKK/KAWNEER	-	ANNODIZED
4	FIBER CEMENT BOARD SIDING	JAMES HARDIE	SMOOTH	PEARL GREY
5	FIBER CEMENT LAP SIDING	JAMES HARDIE	SMOOTH	PEARL GREY
6	THIN BRICK VENEER	-	-	RED
7	THIN BRICK VENEER	-	-	BROWN
8	FIBER CEMENT BOARD TRIM	-	-	GRAY
9	METAL PANEL	ATAS	-	BRONZE
10	COMPOSITE FIBERGLASS WINDOW	ANDERSON 100 SERIES	-	BLACK
11	ALUMINUM LOUVER	-	-	TO MATCH ADJACENT MATERIAL
12	FABRIC AWNING	-	-	BLACK







PREVIOUS RENDERING



PROPOSED RENDERING