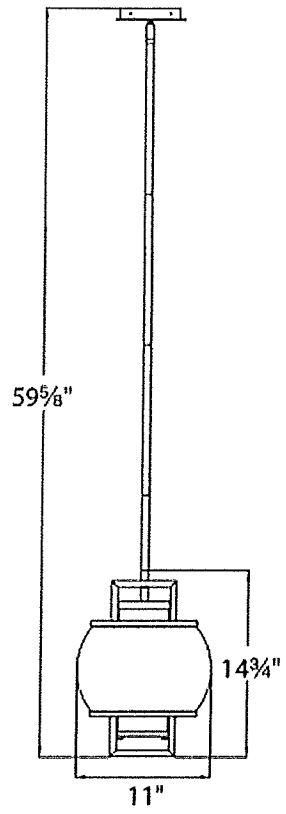
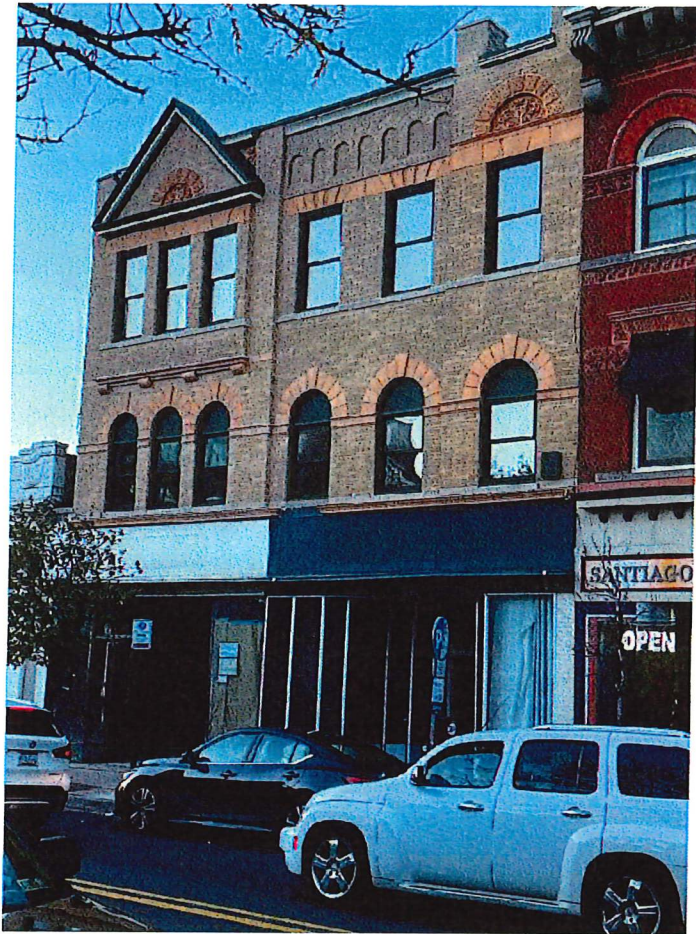


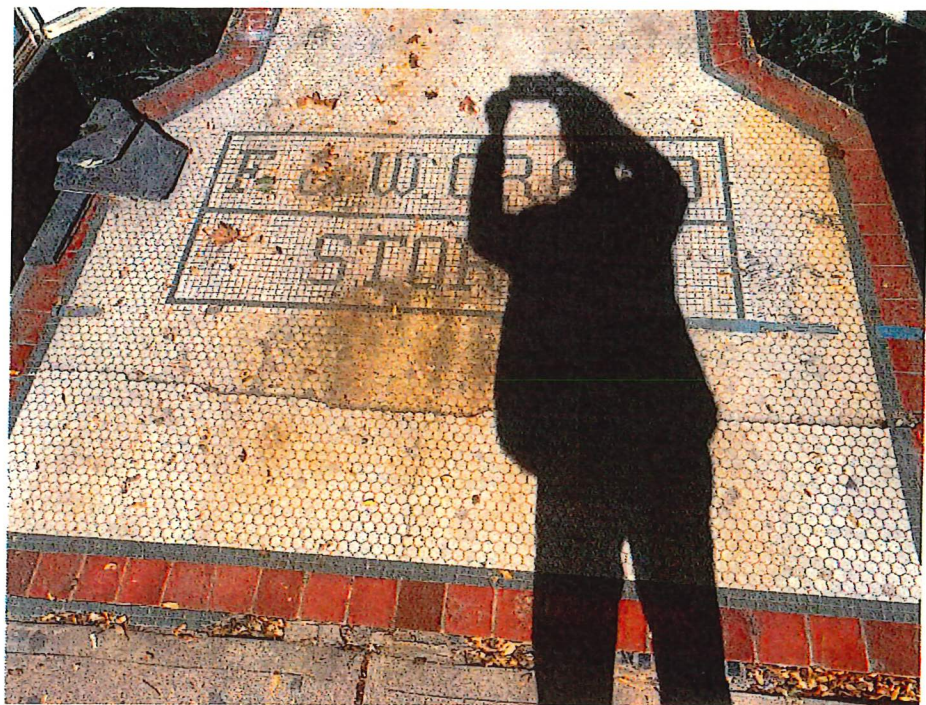
# FORMS

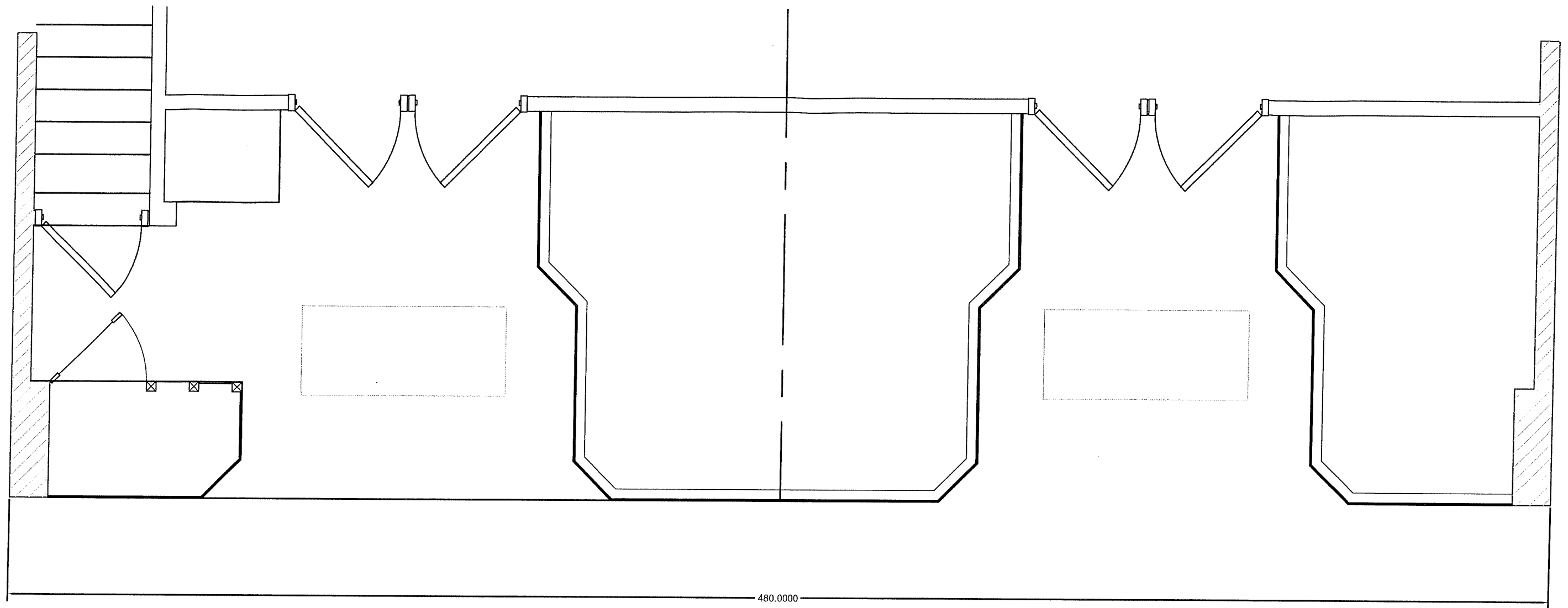


13-15 E Third St - PHOTOS









← SIDEWALK →

Existing Entry Plan

$\frac{3}{8} = 1'-0"$

1

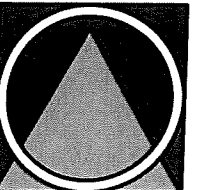
DRAWN BY:	CLN
CHECKED BY:	CU
DATE:	10.27.25
REVISION DATE:	

**Proposed  
Alteration**

13-15 E 3rd STREET  
BETHLEHEM, PA 18015

**Artefact, Inc.**

CHRISTINE USSLER, AIA  
26-28 EAST THIRD STREET  
BETHLEHEM, PA 18015  
610.861.0235 PHONE  
610.861.0275 FAX





Existing Partial South Elevation

$3/8" = 1'-0"$

2

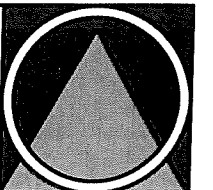
DRAWN BY:	CLN
CHECKED BY:	CU
DATE:	10.27.25
REVISION DATE:	

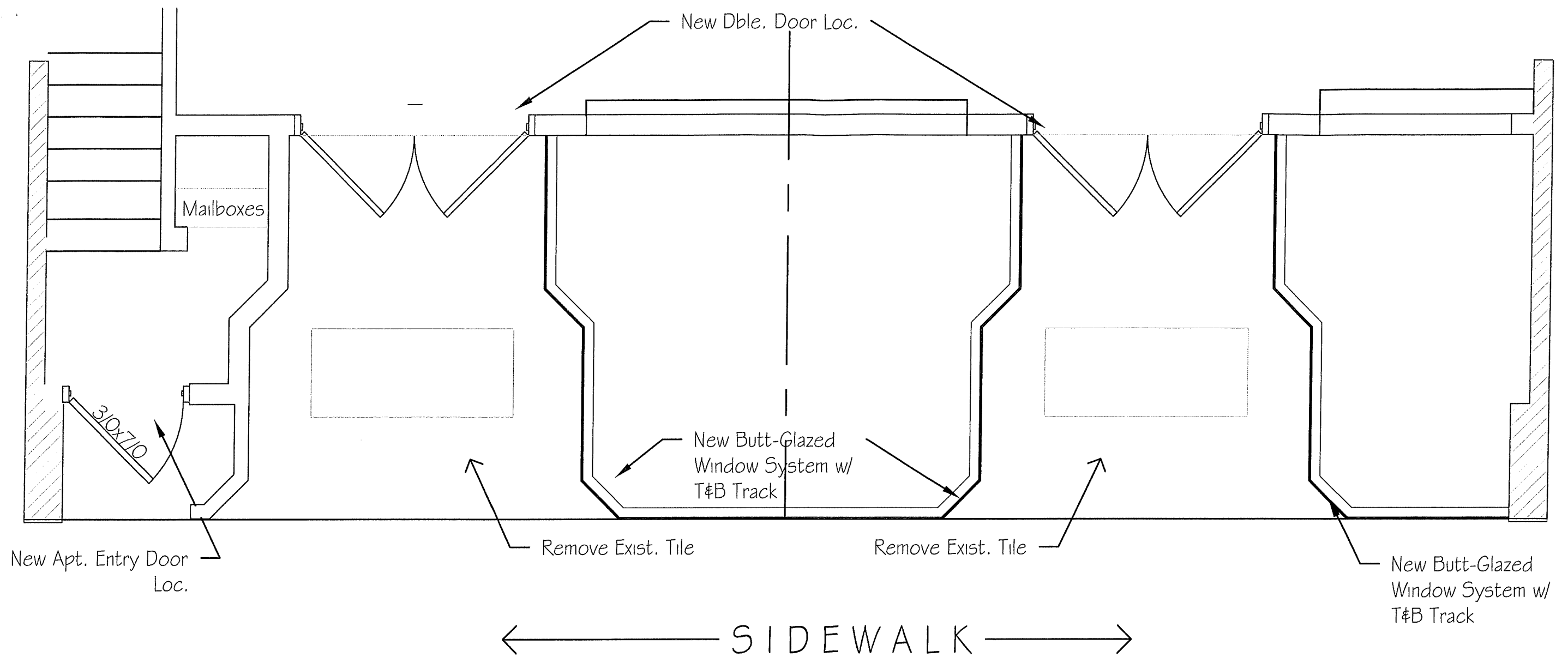
**Proposed  
Alteration**

13-15 E 3rd STREET  
BETHLEHEM, PA 18015

**Artefact, Inc.**

CHRISTINE USSLER, AIA  
26-28 EAST THIRD STREET  
BETHLEHEM, PA 18015  
610.861.0235 PHONE  
610.861.0275 FAX





Proposed Entry Plan

3/8" = 1'-0"

3

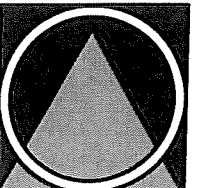
DRAWN BY:	CLN
CHECKED BY:	CU
DATE:	10.27.25
REVISION DATE:	

**Proposed  
Alteration**

13-15 E 3rd STREET  
BETHLEHEM, PA 18015

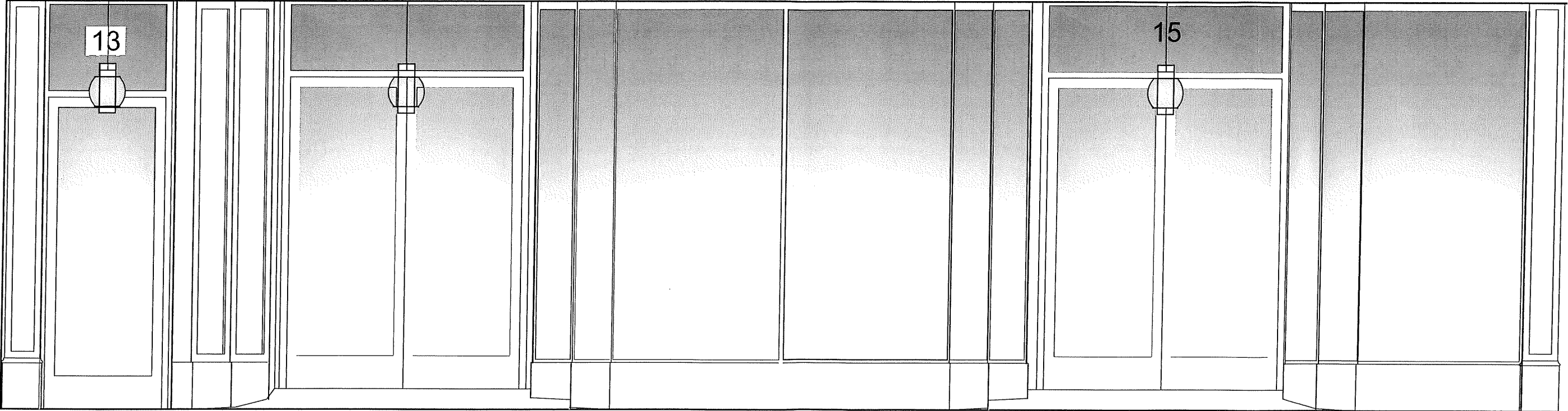
**Artefact, Inc.**

CHRISTINE USSLER, AIA  
26-28 EAST THIRD STREET  
BETHLEHEM, PA 18015  
610.861.0235 PHONE  
610.861.0275 FAX





# SIGNAGE



Proposed Entry Elevation

$\frac{3}{8} = 1'-0"$

4	DRAWN BY:	CLN	<b>Proposed Alteration</b> 13-15 E 3rd STREET BETHLEHEM, PA 18015	<b>Artefact, Inc.</b> CHRISTINE USSLER, AIA 26-28 EAST THIRD STREET BETHLEHEM, PA 18015 610.861.0235 PHONE 610.861.0275 FAX	
	CHECKED BY:	CU			
	DATE:	10.27.25			
	REVISION DATE:				