

# Spillman Farmer Architects

1720 Spillman Drive, Suite 200 | Bethlehem, PA 18015  
Phone: 610.865.2621 | Website: www.spillmanfarmer.com

**SITE / CIVIL ENGINEER**  
Bohler Engineering, 74 West Broad Street, Suite 500,  
Bethlehem, PA 18018, 610-709-9971

**LANDSCAPE ARCHITECT**  
N/A

**STRUCTURAL ENGINEER**  
D'Huy Engineering, Inc., One East Broad Street, Suite  
310, Bethlehem, PA 18018, 610-865-3000

**MECHANICAL ELECTRICAL PLUMBING**  
D'Huy Engineering, Inc., One East Broad Street, Suite  
310, Bethlehem, PA 18018, 610-865-3000

**FIRE PROTECTION ENGINEER**  
D'Huy Engineering, Inc., One East Broad Street, Suite  
310, Bethlehem, PA 18018, 610-865-3000

**TELECOM ENGINEER**  
N/A

**AUDIO VISUAL ENGINEER**  
N/A

**SECURITY ENGINEER**  
N/A

**ACOUSTICAL ENGINEER**  
N/A

## DRAWING HISTORY

NO.	ISSUE DATE:	DESCRIPTION
-----	-------------	-------------

CURRENT ISSUE  
DESIGN DEVELOPMENT  
NOT FOR CONSTRUCTION  
07.12.2024

COPYRIGHT 2024 SFA  
REGISTRATION

**BOSCH REXROTH**

2300 CITY LINE ROAD, BETHLEHEM, PA  
18017

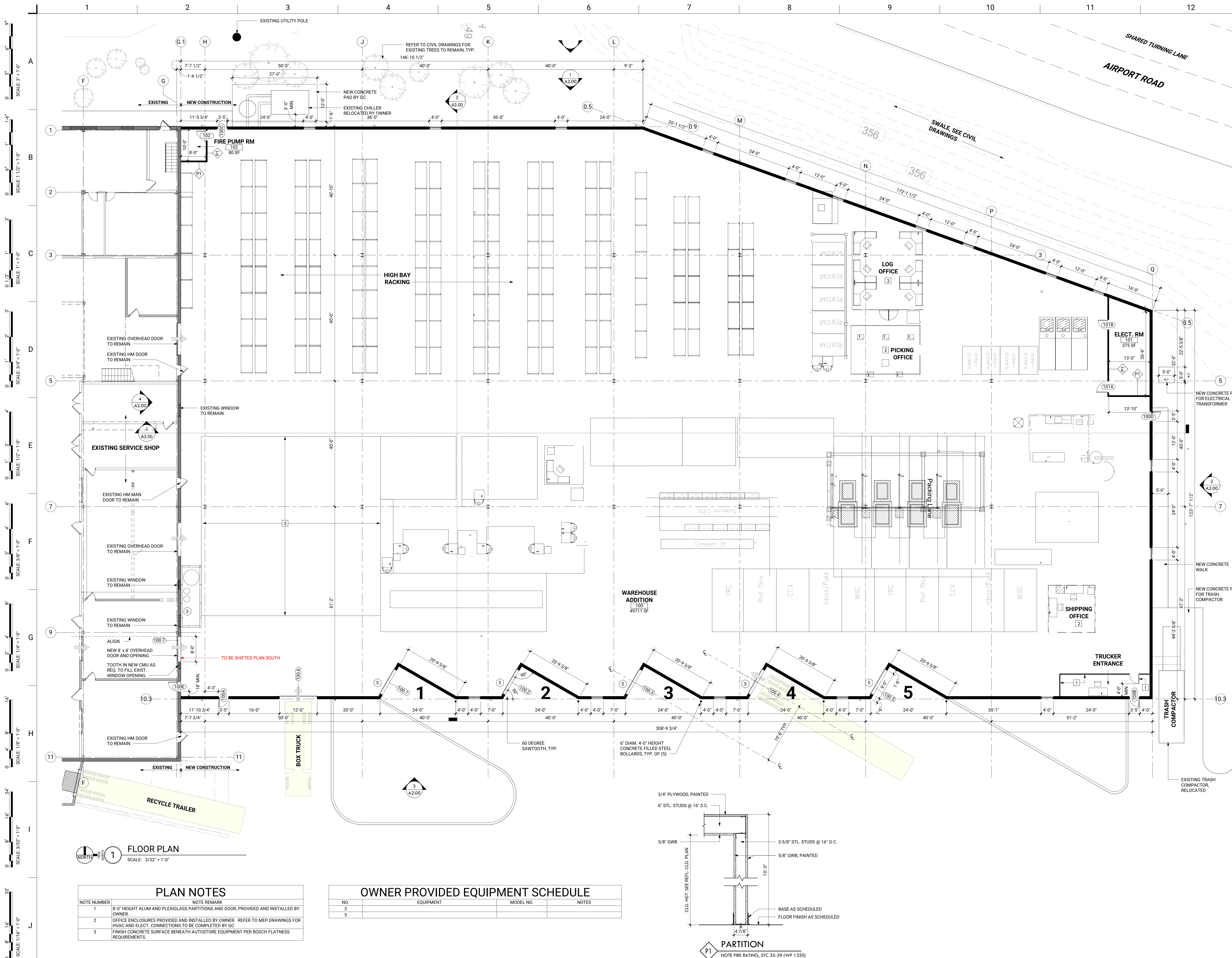
**BOSCH REXROTH**  
**WAREHOUSE EXPANSION**  
2300 CITY LINE ROAD  
BETHLEHEM, PA 18017

**FLOOR PLAN**

FULL SHEET SIZE: 30" x 42"  
PROJECT NUMBER 8208.23

SHEET NUMBER

# A1.00



**1 FLOOR PLAN**

SCALE: 3/32" = 1'-0"

## PLAN NOTES

NOTE NUMBER	NOTE REMARK
1	8'-0" HEIGHT ALUM AND PLEXIGLASS PARTITIONS AND DOOR, PROVIDED AND INSTALLED BY OWNER.
2	OFFICE ENCLOSURES PROVIDED AND INSTALLED BY OWNER. REFER TO MEP DRAWINGS FOR HVAC AND ELECT. CONNECTIONS TO BE COMPLETED BY GC.
3	FINISH CONCRETE SURFACE BENEATH AUTOSTORE EQUIPMENT PER BOSCH FLATNESS REQUIREMENTS.

## OWNER PROVIDED EQUIPMENT SCHEDULE

NO.	EQUIPMENT	MODEL NO.	NOTES
3			
5			



# Spillman Farmer Architects

1720 Spillman Drive, Suite 200 | Bethlehem, PA 18015  
Phone: 610.865.2621 | Website: www.spillmanfarmer.com

**SITE / CIVIL ENGINEER**  
Bohler Engineering, 74 West Broad Street, Suite 500,  
Bethlehem, PA 18018, 610-709-9971

**LANDSCAPE ARCHITECT**  
N/A

**STRUCTURAL ENGINEER**  
D'Huy Engineering, Inc., One East Broad Street, Suite  
310, Bethlehem, PA 18018, 610-865-3000

**MECHANICAL ELECTRICAL PLUMBING**  
D'Huy Engineering, Inc., One East Broad Street, Suite  
310, Bethlehem, PA 18018, 610-865-3000

**FIRE PROTECTION ENGINEER**  
D'Huy Engineering, Inc., One East Broad Street, Suite  
310, Bethlehem, PA 18018, 610-865-3000

**TELECOM ENGINEER**  
N/A

**AUDIO VISUAL ENGINEER**  
N/A

**SECURITY ENGINEER**  
N/A

**ACOUSTICAL ENGINEER**  
N/A

DRAWING HISTORY	
NO.	ISSUE DATE: DESCRIPTION

**CURRENT ISSUE**  
DESIGN DEVELOPMENT  
NOT FOR CONSTRUCTION  
07.12.2024

**COPYRIGHT 2024 SFA**  
REGISTRATION

**BOSCH REXROTH**

2300 CITY LINE ROAD, BETHLEHEM, PA  
18017

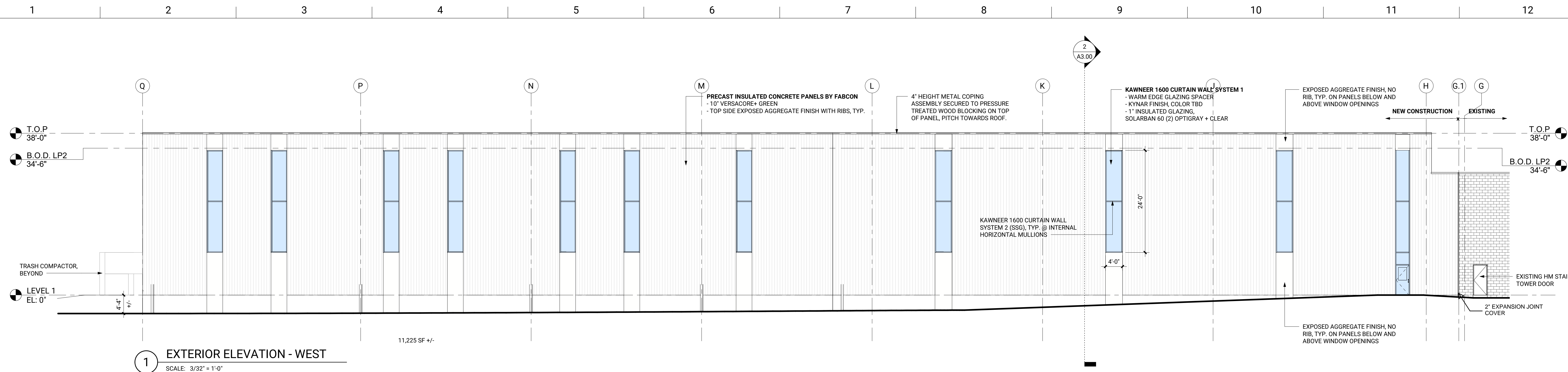
**BOSCH REXROTH**  
WAREHOUSE EXPANSION  
2300 CITY LINE ROAD  
BETHLEHEM, PA 18017

**EXTERIOR ELEVATIONS**

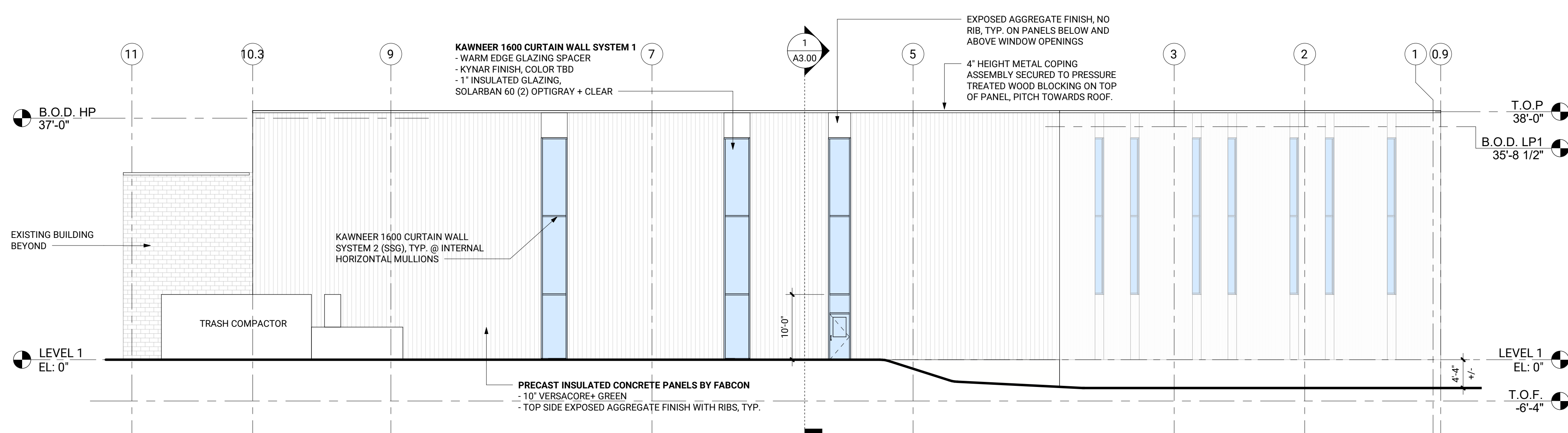
**GENERAL NOTES:**  
1. EXTERIOR FACADE FINISH AND  
DESIGN TO BE DETERMINED.  
2. FINAL QUANTITY AND LOCATIONS OF  
RWCS TO BE DETERMINED.

FULL SHEET SIZE: 30" x 42"  
PROJECT NUMBER: 8208.23  
SHEET NUMBER

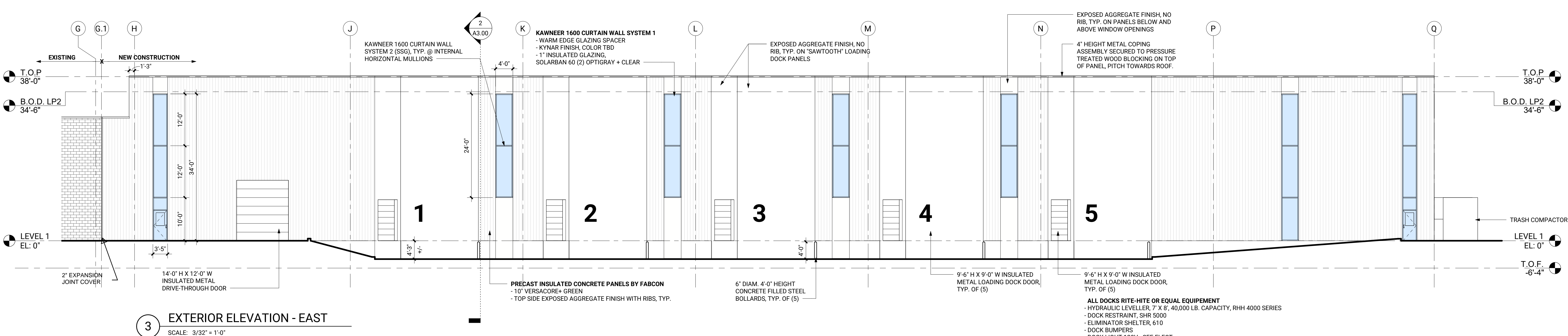
# A2.00



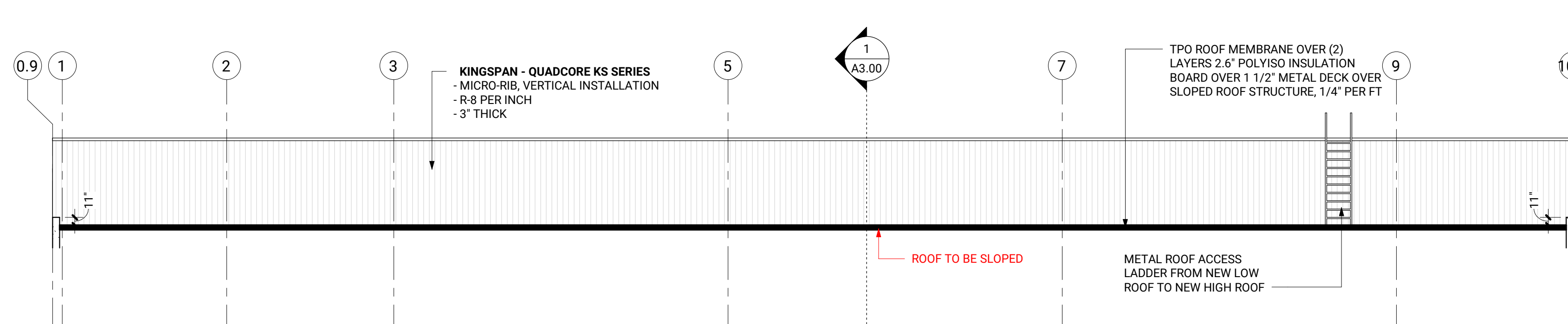
**1 EXTERIOR ELEVATION - WEST**  
SCALE: 3/32" = 1'-0"



**2 EXTERIOR ELEVATION - NORTH**  
SCALE: 3/32" = 1'-0"



**3 EXTERIOR ELEVATION - EAST**  
SCALE: 3/32" = 1'-0"



**4 EXTERIOR ELEVATION - SOUTH**  
SCALE: 3/32" = 1'-0"