



SW 6204

SW 6205

SW 6206

SW 9132


SW 6207

SW 6208

SW 6

SW 6209

Ripe Olive

FULL DETAILS 

Make a bold and colorful statement with this deep green. With its blue-gray undertones, this neutral can offer a well-lit space an intriguing, sophisticated mood.

Get this color in a:



Color Sample



Paint Sample



Interior Paint



Exterior Paint



↑ **UPLOAD A PHOTO**


H Historic Color

SW 2829


Classical White

FULL DETAILS ▾

Get this color in a:



Color Sample



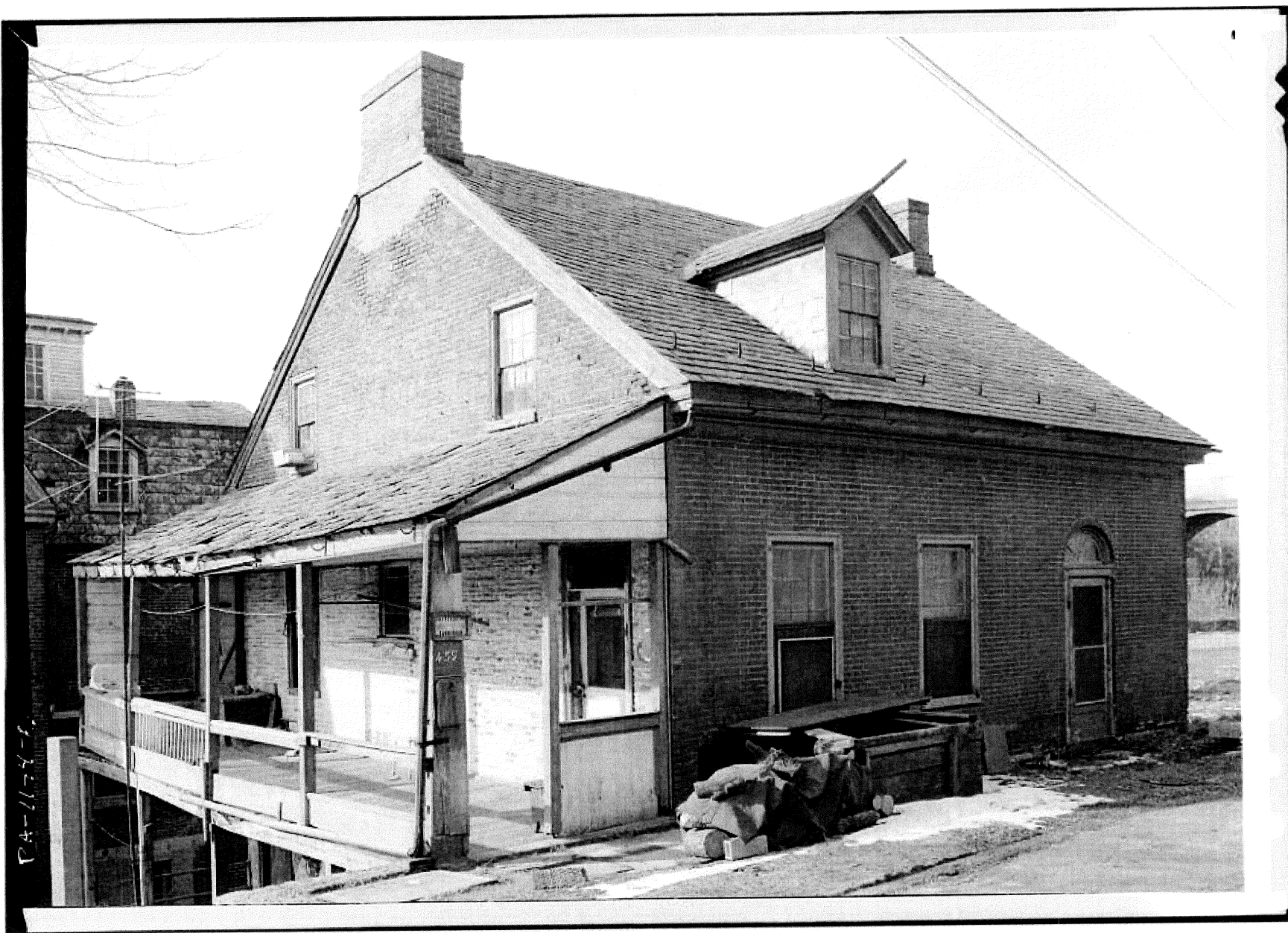
Paint Sample



Interior Paint



Exterior Paint



PA-1144-2

58



Job Name:RALPH G. SCHWARZ INTERPRATION CENTER: GRIST MILLER'S HOUSE
RESTORATION

Architect: ARTEFACT - BETHLEHEM (Bethlehem)

Distributor: UNITED ELECTRIC SUPPLY - LANCASTER (Lancaster)

Catalog Number:

KINGSTON 10014BK--

640665100334

Notes:

Type:**E**

NOR24-224279

Heritage
ILLUMINATION**KINGSTON****10014BK****LARGE WALL MOUNT LANTERN**

Effortlessly elegant, Kingston embraces traditional features and visual intrigue to illuminate exterior spaces, while its sturdy aluminum construction ensures durability to withstand outdoor elements. The classic lantern design highlights an oversized soft sweeping roof and bottom arm, clean lines, and a Black finish. Kingston's removable hood allows for easy bulb replacement.

DETAILS

FINISH:	Black
MATERIAL:	Aluminum
GLASS:	Clear Seedy
DIMMABLE:	YES, WITH DIMMABLE LAMP (NOT INCLUDED)

DIMENSIONS

WIDTH:	8.5"
HEIGHT:	26"
WEIGHT:	5.8lb
BACK PLATE:	5.5" Dia.
EXTENSION:	10.3"
TOP TO OUTLET:	11"

LIGHT SOURCE

LIGHT SOURCE:	Socketed
WATTAGE:	2-5w Cand. LED, 60w Equiv.
VOLTAGE:	120v

SHIPPING

CARTON LENGTH:	13.5
CARTON WIDTH:	12
CARTON HEIGHT:	25.3
CARTON WEIGHT:	8.1

**PRODUCT DETAILS:**

- Suitable for use in wet (outdoor direct rain) locations as defined by NEC and CEC. Meets United States UL Underwriters Laboratories & CSA Canadian Standards Association Product Safety Standards
- 2-year finish warranty
- Classic lines and heritage details complement traditional architecture

HINKLEYHINKLEY
33000 Pin Oak Parkway
Avon Lake, OH 44012PHONE: (440) 653-5500
Toll Free: 1 (800) 446-5539

hinkley.com

Job Name:
RALPH G. SCHWARZ INTERPRATION CENTER: GRIST MILLER'S HOUSE
RESTORATION
Architect: ARTEFACT - BETHLEHEM (Bethlehem)
Distributor: UNITED ELECTRIC SUPPLY - LANCASTER (Lancaster)

Catalog Number:
LLRHLED2PWPMV

Type:
REM

Notes:

NOR24-224279



Job Name:

Type:

Part #:

Notes:

LLRHLED LED OUTDOOR POLYCARBONATE/DIE-CAST REMOTE HEAD

ILLUMINATION

- Long lasting, efficient, ultra-bright white LED lamp heads.
- 1.0 watt (8 LEDs x 0.125 watt) per head.
- High performance chrome-plated metalized reflector and plastic lens for optimal light distribution.
- Adjustable LED lamp heads provide optimal center-to-center spacing.
- Optional high lumen heads are 1.5 watts (12 LEDs x 0.125 watt per head) and provide increased center-to-center spacing.



WARRANTY/LISTING

- Five year warranty.
- UL Listed.
- Meets UL924, NFPA 101 Life Safety Code, NEC, OSHA, Local and State Codes.

ELECTRICAL

- Powered from low voltage power source with low voltage wiring (not provided).

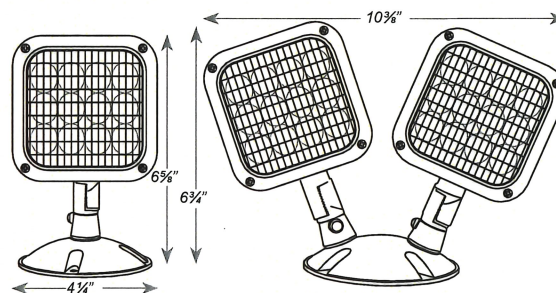
MOUNTING

- Universal mounting adapter plate included. Mounts to single-gang switch box.
- Distance of maximum run is determined by system voltage, wire gauge and total maximum wattage on the run.
- Suitable for wall or ceiling mount.

HOUSING

- Available in both engineering grade, high-impact resistant polycarbonate or premium grade die-cast aluminum housing.
- Sealed and gasketed in standard gray or black finish.

DIMENSIONS



ORDERING INFORMATION

LLCLPU offers 3.0 watts of Remote Power - Choose remote heads accordingly

MODEL	No. of HEADS	OPTIONS	HOUSING	VOLTAGE	COLOR	LAMP TYPE ¹
LLRHLED	1 Single Head	(blank)	PWP	MV	(blank)	(blank) 8 LEDs 1W
	2 Double Head	SDT	WP		B Black	HL 12 LEDs 1.5W