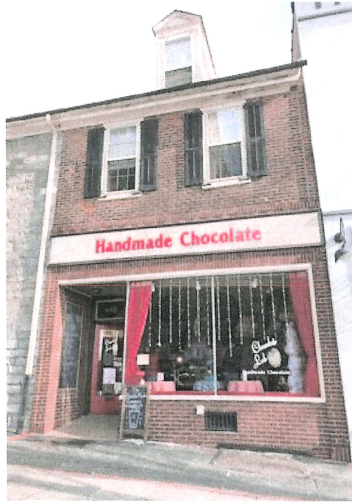


448 Main St
Bethlehem, Pennsylvania
[View on Google Maps](#)

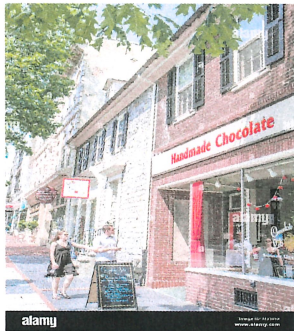




Current tenant "Chocolate Lab" at 446 Main St, Bethlehem, PA 18018



Neighbor to the right of "Chocolate Lab" - Moravian Book Store



Neighbor to the left of "Chocolate Lab" - David Hausman Designs



New proposed signage for Twisted & Dipped- to be produced & installed by Express Sign Outlet Located at 4865 Hamilton Blvd, Allentown, PA. Current sign will be removed and replace w/ an aluminum faced material that is 1/4" thick. Masonry screws (Tapcons) will be used to fasten sign panel to brick.

2' x 16' OR 32 SF

**1/4" thick aluminum faced panels each 2' x 8' for overall size of 2' x 16'
directly fastened to brick facade using tapcon anchors 1/4" x 3" into mortar joints
Graphics will be printed vinyl applied to aluminum panel
letters to be Pantone 441 and ampersand Pantone 191**

