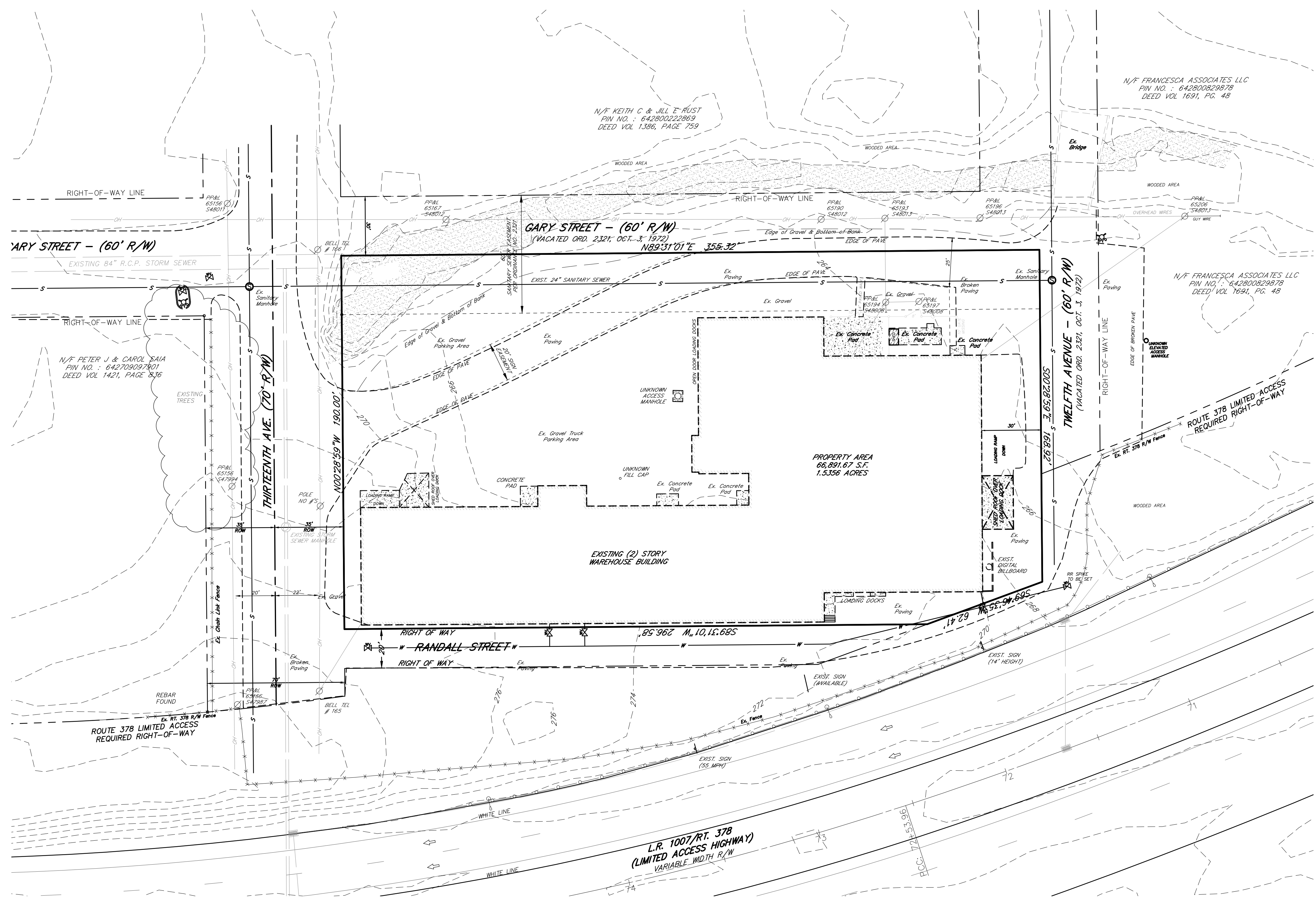


LOCATION MAP
SCALE: 1" = 1000'

CALL BEFORE YOU DIG IN PENNSYLVANIA
A Three Working Day Notice is the Law!
1-800-242-1776
Dig Safely.
www.paonecall.org

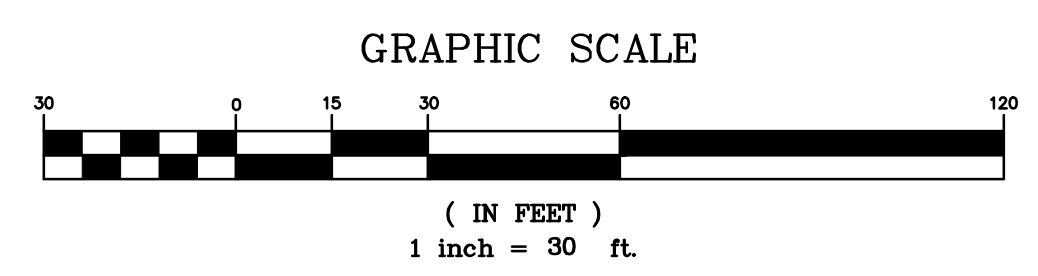
ALL CONTRACTORS WORKING ON THIS PROJECT SHALL VERIFY LOCATION AND DEPTH OF ALL UNDERGROUND UTILITIES/FACILITIES PRIOR TO START OF WORK AND SHALL COMPLY WITH THE REQUIREMENTS OF P.L. 852, NO. 287 DECEMBER 10, 1974 AS LAST AMENDED ON MARCH 29, 2007, PENNSYLVANIA ACT 181.
LOCATIONS OF EXISTING UNDERGROUND UTILITIES/FACILITIES SHOWN HEREON HAVE BEEN DEVELOPED FROM RECORDS, FIELD MARKOUTS BY UTILITY OWNERS, AND/OR ABOVE-GROUND OBSERVATIONS OF THE SITE. NO EXCAVATIONS WERE PERFORMED IN THE PREPARATION OF THESE DRAWINGS; THEREFORE ALL UTILITIES SHOWN SHOULD BE CONSIDERED APPROXIMATE IN LOCATION, DEPTH, AND SIZE. POTENTIAL EXISTS FOR OTHER UNDERGROUND UTILITIES/FACILITIES TO BE PRESENT WHICH ARE NOT SHOWN ON THE DRAWINGS. ONLY VISIBLE LOCATIONS OF UNDERGROUND UTILITIES/FACILITIES AT THE TIME OF THE FIELD SURVEY SHALL BE CONSIDERED TRUE AND ACCURATE. COMPLETENESS OR ACCURACY OF UNDERGROUND UTILITIES/FACILITIES IS NOT GUARANTEED BY JENA ENGINEERING CORP.

SITE DATA	
RECORD OWNER:	PARNUSA TOVA LLC 1402 57th STREET BROOKLYN NY 11219-4619
PROPERTY ADDRESS:	830 13th AVENUE BETHLEHEM PA 18103
TAX MAP:	1N1W1, BLOCK 1, LOT 1
DEED REFERENCE:	2021024294
PIN:	642800403278-1
TRACT AREA:	1.5356 ACRES
ZONING DISTRICT:	LI - LIGHT INDUSTRIAL
SEWER:	CITY OF BETHLEHEM
WATER:	CITY OF BETHLEHEM



LEGEND

EXIST. PROPERTY LINE	---
EXIST. E.O.A.	---
EXIST. STORM SEWER	---
EXIST. SANITARY SEWER	---
EXIST. WATER	---
EXIST. GAS	---
EXIST. OVERHEAD WIRES	---
EXIST. CONTOUR LINE	---



This drawing and its contents are copyright © 2011 JENA Engineering Corporation, and are the exclusive property of JENA Engineering Corporation, and may not be reproduced in any form without written authorization from JENA Engineering Corporation. Unauthorized reproduction, use for construction, or any other use of any or all parts of this drawing will constitute a violation of U. S. copyright laws. No third party may rely upon these plans without the consent of JENA Engineering Corporation. Field conditions should be confirmed prior to use for construction or other purposes. JENA Engineering Corporation assumes no obligation to supplement or update plans for changes, or any other reasons. All intellectual property rights, including (without limitation) design concepts, text, images, graphs, dimensions, details, any underlying databases, the layout, architectural, structural, and MEP design all remain the property of JENA Engineering Corporation or its licensors, unless otherwise indicated.

NO.	DATE	REVISIONS	BY

JENA ENGINEERING CORP.
CONSULTING ENGINEERS & SURVEYORS

2558 SUNSHINE ROAD
SUITE 100
ALLENTOWN, PA 18103
PHONE: (610) 797-4200
EMAIL: geninc@jenaengineering.com
WEB SITE: www.jenaengineering.com

SITE PLAN
830 13th AVENUE
13th WARD
CITY OF BETHLEHEM
LEHIGH COUNTY - PENNSYLVANIA

SHEET: 1 of 1
PROJECT: 123122
DATE: 2/2/23
SCALE: 1" = 30'
DRAWN BY: G.M.
DESIGN BY: B.L.R.