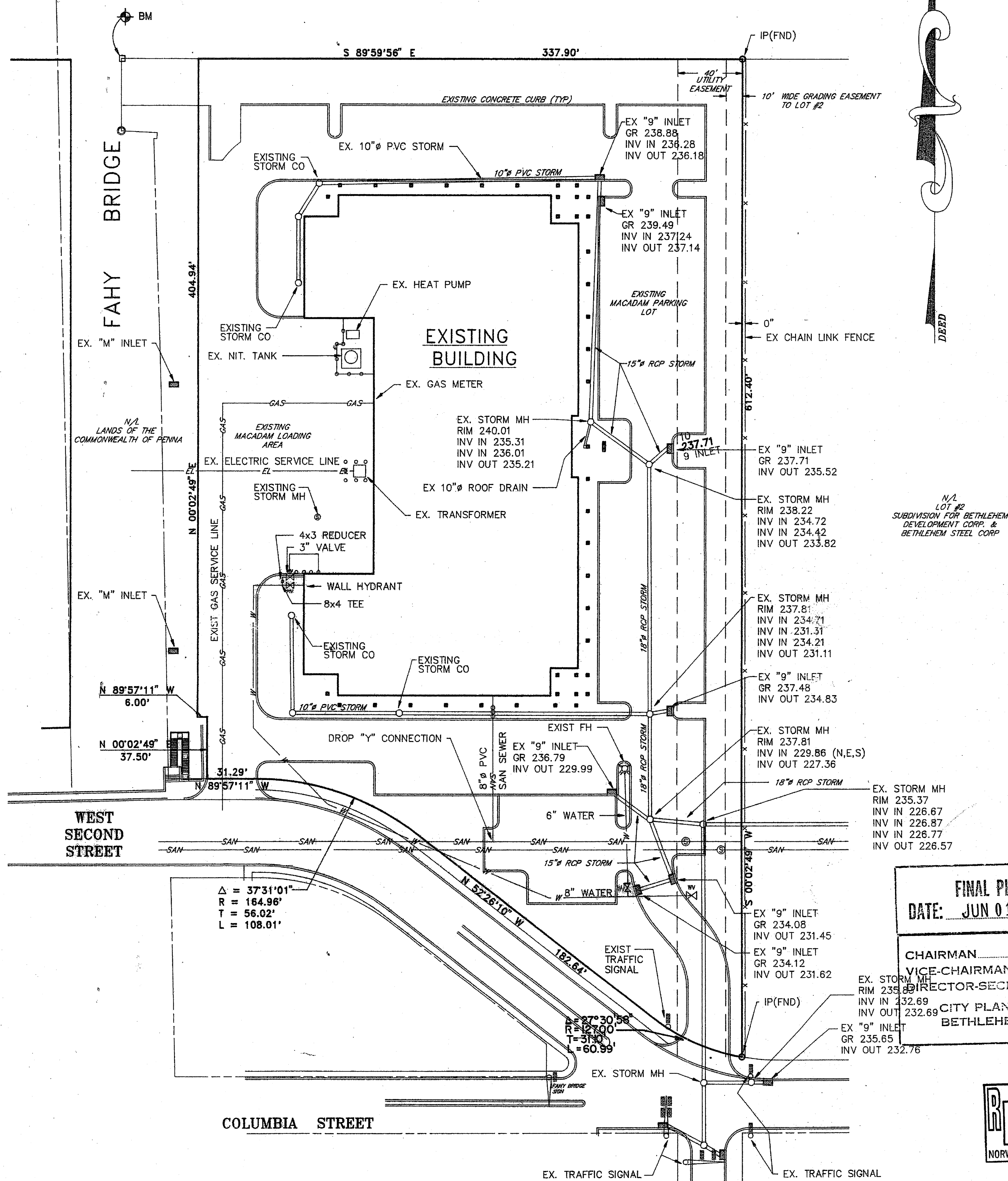


EXISTING SITE PLAN

N/A
CONSOLIDATED RAIL CORP.



AS BUILT UTILITY PLAN

GRAPHIC SCALE



(IN FEET)
1 inch = 40 ft.

BENCHMARK:

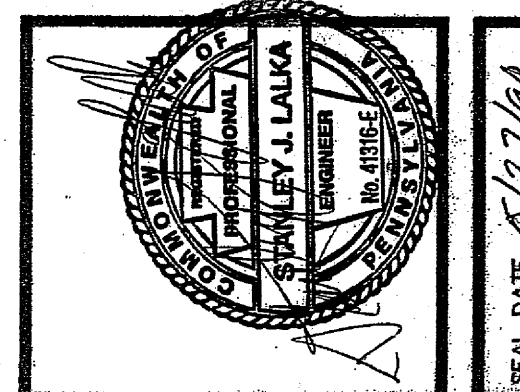
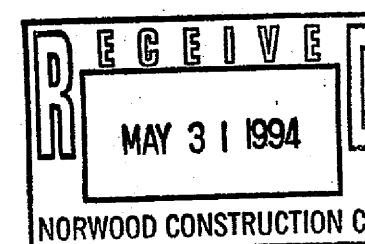
CONCRETE MONUMENT
NW CORNER OF TRACT
ELEVATION = 232.84

NOTES:

- 1.) BACKGROUND INFORMATION TAKEN FROM SITE DEVELOPMENT PLAN PREPARED BY MONOCACY ENGINEERING DATED 1/11/93, LAST REVISED 3/3/93.
- 2.) DEED REFERENCE: DBV 834, PAGE 592, 595.
- 3.) SUBDIVISION PLAN PREPARED BY KEYSTONE CONSULTING ENGINEERS, INC., DATED 1/12/93.
- 4.) ADDITIONAL INFORMATION TAKEN FROM AS BUILT PLAN PREPARED BY HANOVER ENGINEERING ASSOC. DATED 5/10/94.
- 5.) FIELD SURVEY PERFORMED ON MAY 6, 1994 BY MONOCACY ENGINEERING ASSOC. INC.

FINAL PLAN APPROVED
DATE: JUN 01 1994

CHAIRMAN
VICE-CHAIRMAN
DIRECTOR-SECRETARY
CITY PLANNING COMMISSION
BETHLEHEM, PENNSYLVANIA



SEAL DATE 6/27/94

No.	REVISION	BY	DATE
1	PER CITY OF BETH COMMENTS	CW	5/27/94

MONOCACY
ENGINEERING ASSOCIATES
INCORPORATED
214 South Walnut Street, Bethlehem, Pennsylvania 18014
FAX: 610-837-9435

DRAWN BY: GWASNER
CHECKED BY: SUI
SCALE: 1" = 40'
REVISION No. 1

AS BUILT SURVEY PLAN
SITE UTILITY LOCATIONS

FOR
B.E.D.C.O.
BETHLEHEM TECHNOLOGY CENTER
BETHLEHEM, PENNA

SITUATED IN
CITY OF BETHLEHEM, NORTHAMPTON CITY
MAY 15, 1994

COMPUTER FILE: BTC-AB.DWG
M.E.A. JOB NO.
DRAWING NO. **AB1**
MONOCACY
ENGINEERING ASSOCIATES
INCORPORATED
214 S. WALNUT ST BATH, PA
(610) 837-9440