

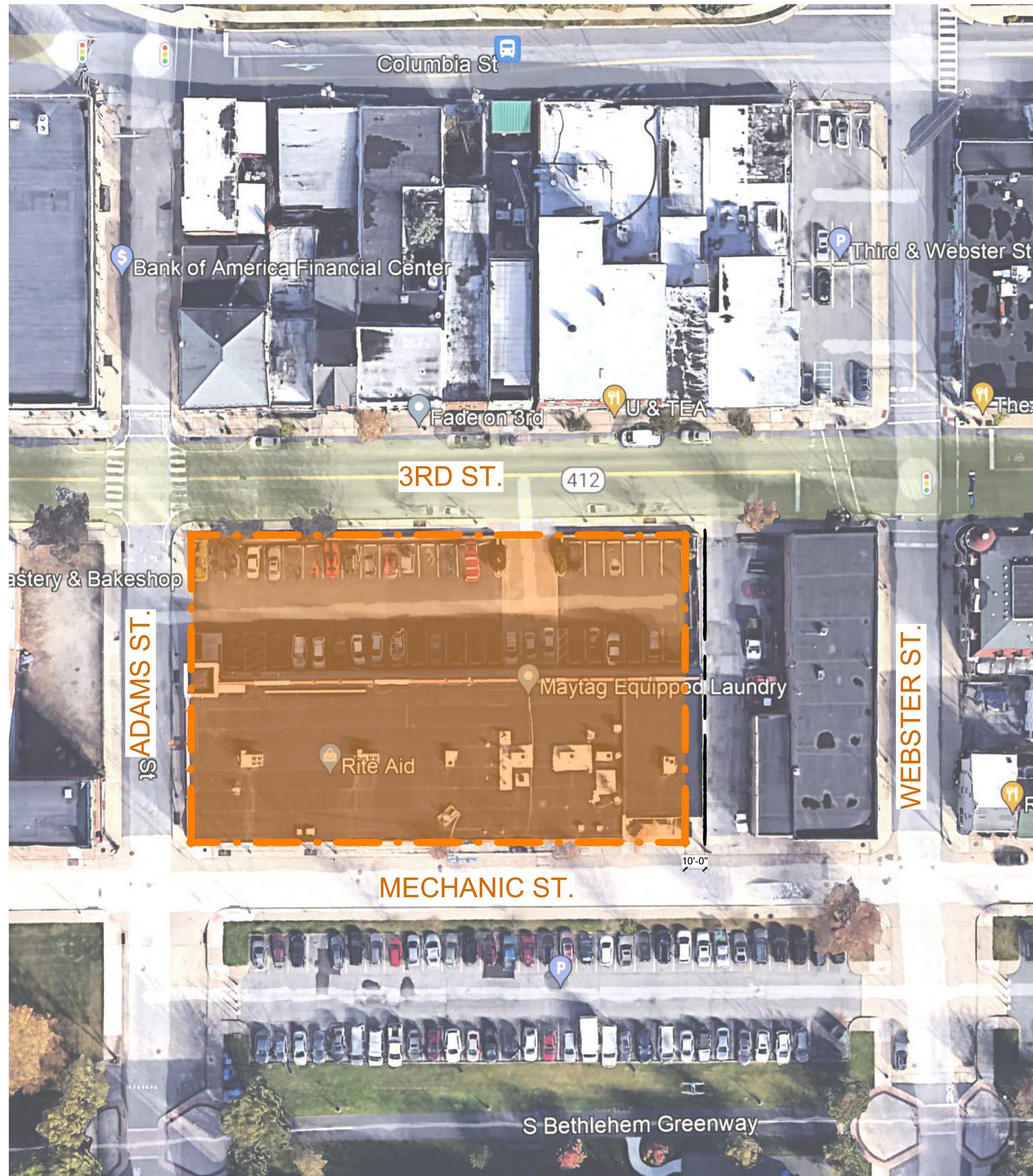
MILELLI REALTY | USA ARCHITECTS

E 3RD ST. & ADAMS ST.

SOUTHSIDE HISTORIC CONSERVATION DISTRICT (HCC)

01.30.2023

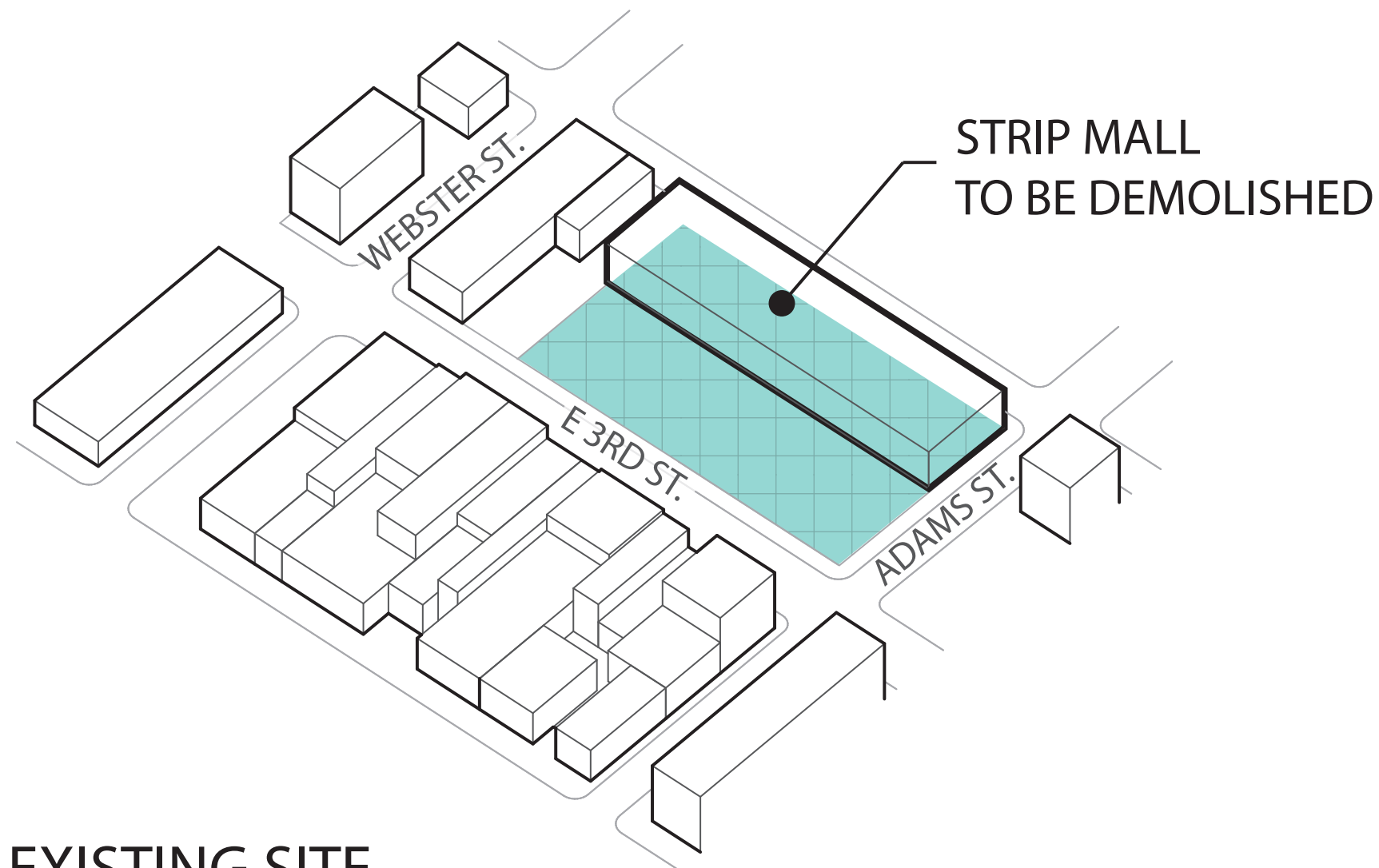




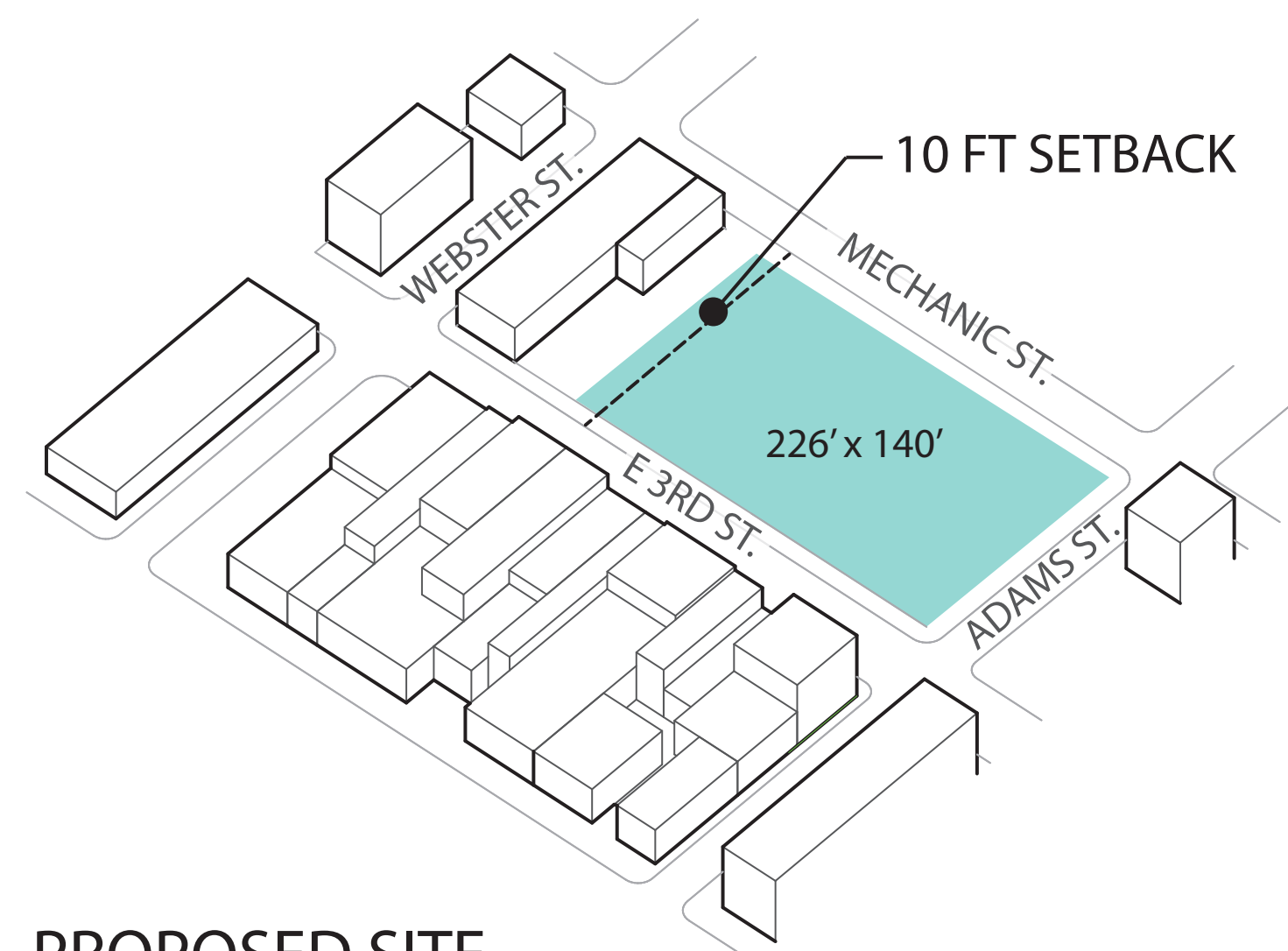
SITE LOCATION

THE PROJECT SITE OF EAST 3RD STREET AND ADAMS STREET IS LOCATED WITHIN THE CITY OF BETHLEHEM'S SOUTHSIDE HISTORIC CONSERVATION DISTRICT (HCC). IT IS CURRENTLY HOME TO A STRIP MALL WITH RITE AID AS AN ANCHOR TENANT. OUR GOAL IS TO DESIGN A MIXED-USE HOUSING DEVELOPMENT CONTEXTUALLY FITTING WITHIN THE HISTORIC NEIGHBORHOOD WHILE RETAINING THE SITE'S CURRENT RETAIL NEEDS.

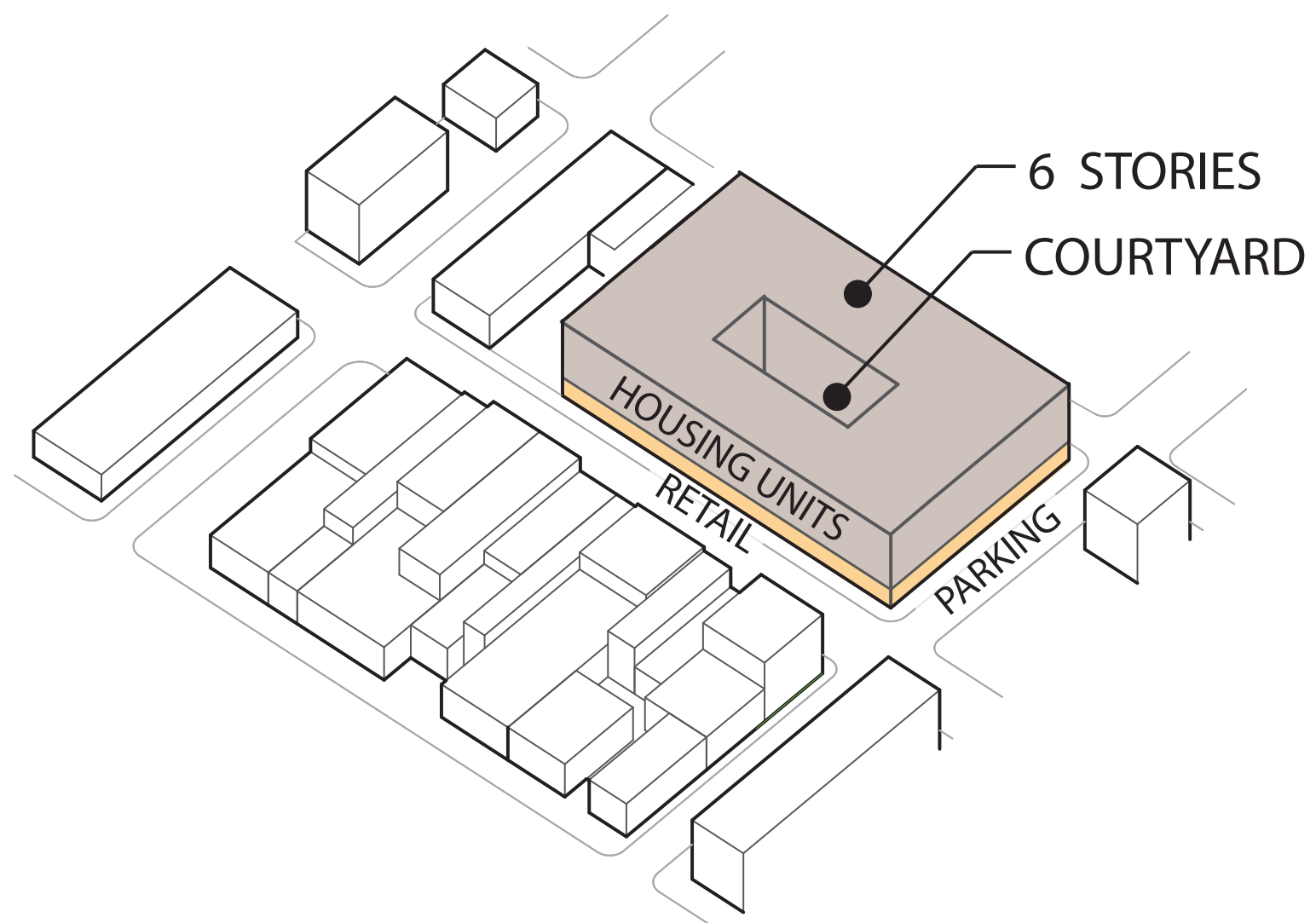
DIAGRAMS



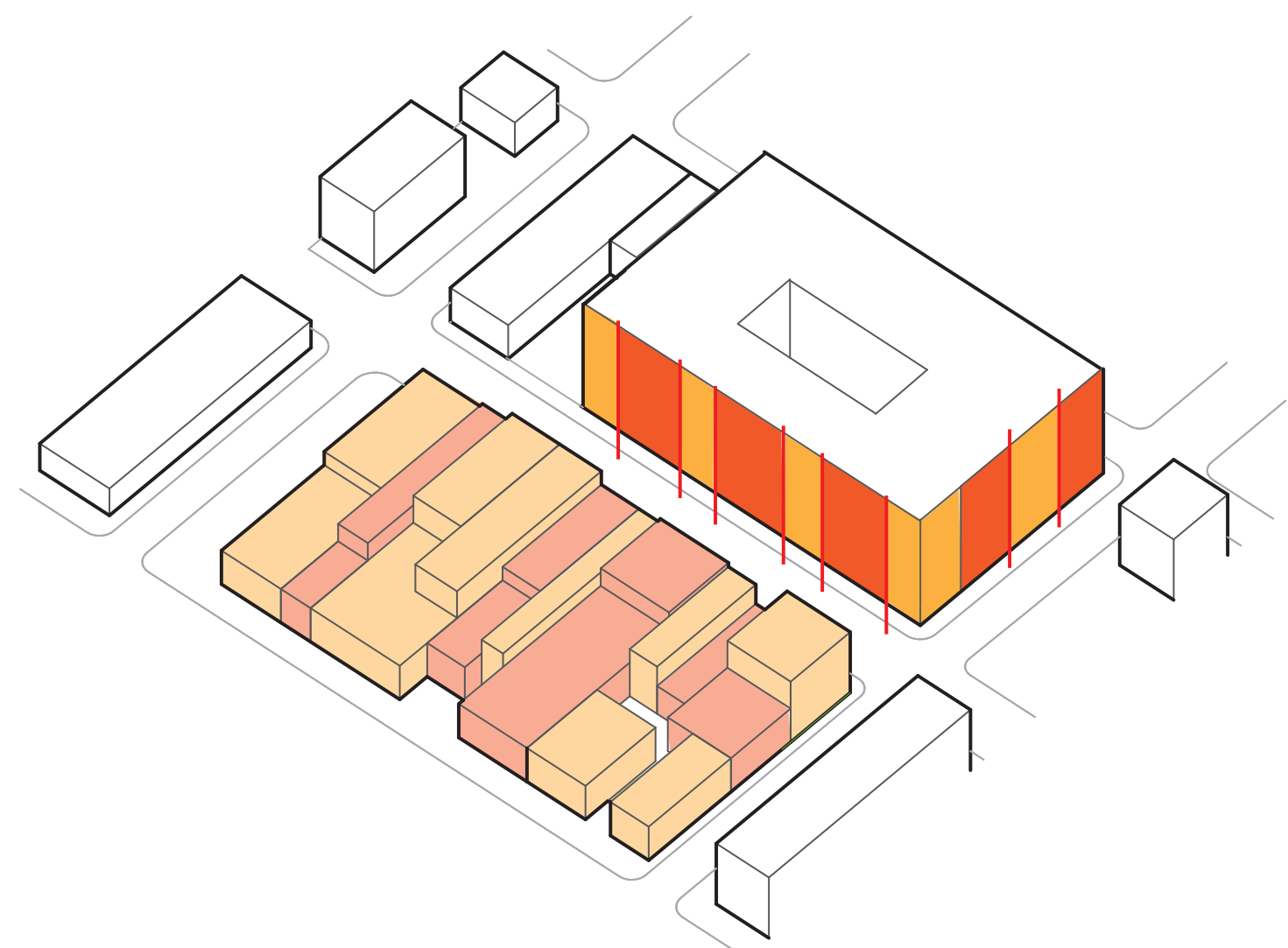
EXISTING SITE



PROPOSED SITE

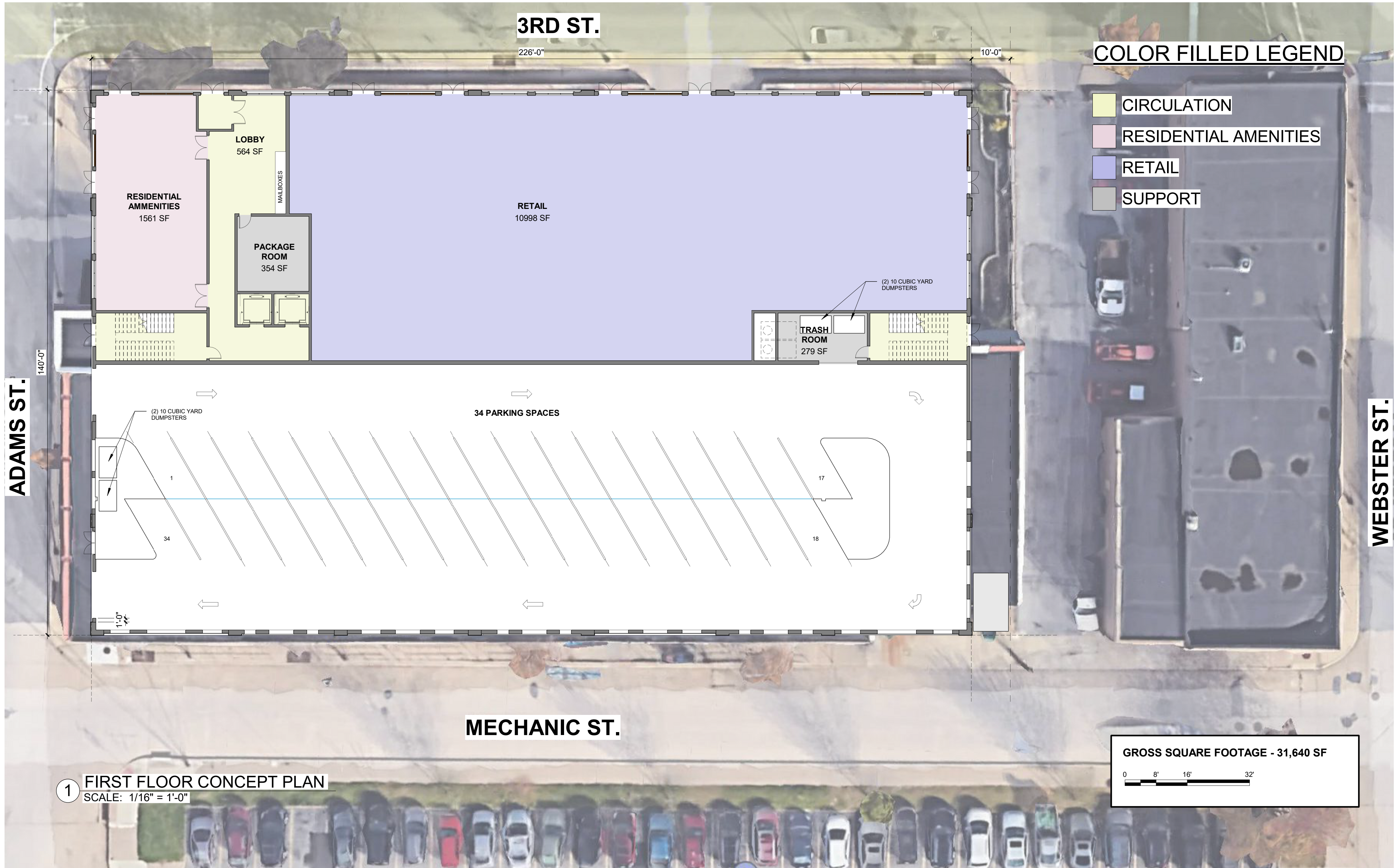


PROPOSED BUILDING



FACADE RHYTHM

FIRST FLOOR PLAN



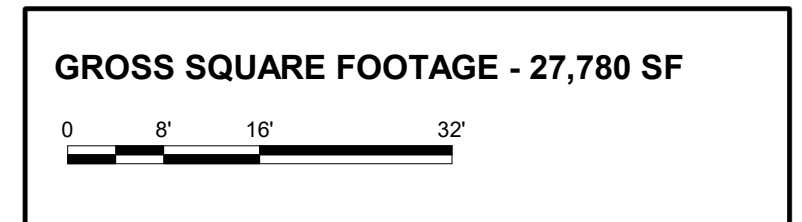
TYPICAL 2ND - 6TH FLOOR PLAN



COLOR FILLED LEGEND

- 1 BED
- 2 BED
- CIRCULATION
- RESIDENTIAL AMENITIES
- SUPPORT

		UNIT COUNTS		
		STUDIO (8%)	1 BR (52%)	2 BR (40%)
6 STORY OPTION	FIRST FLOOR	0	0	0
	SECOND FLOOR	2	13	10
	THIRD FLOOR	2	13	10
	FOURTH FLOOR	2	13	10
	FIFTH FLOOR	2	13	10
	SIXTH FLOOR	2	13	10
TOTAL : 125		10	65	50



① TYPICAL 2ND FLOOR THROUGH 6TH FLOOR CONCEPT PLAN
SCALE: 1/16" = 1'-0"

PRECEDENT IMAGES

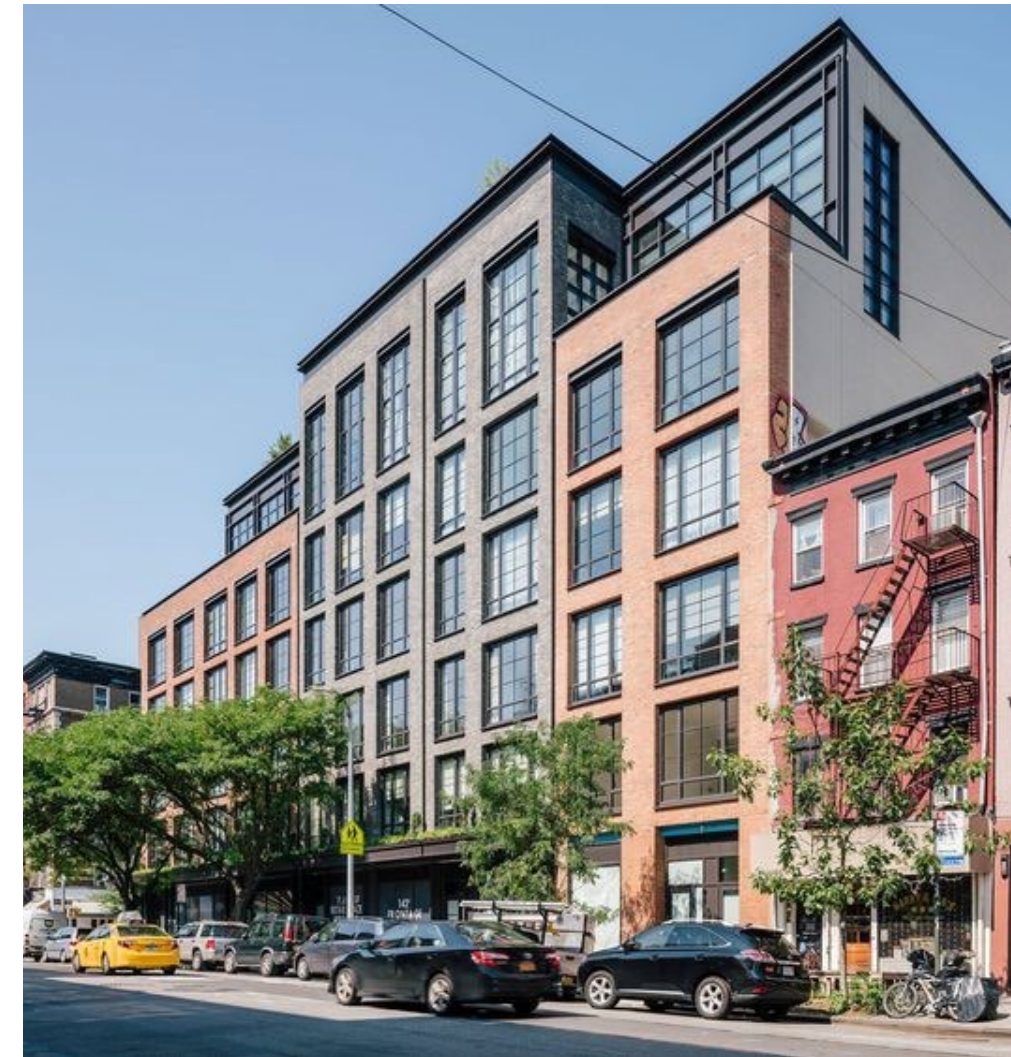


IMAGE OF EAST 3RD STREET - MATERIAL INSPIRATION FOR DESIGN

BUILDING ELEVATIONS



① NORTH ELEVATION - 3RD STREET
SCALE: 1" = 20'-0"



② EAST ELEVATION - WEBSTER STREET
SCALE: 1" = 20'-0"







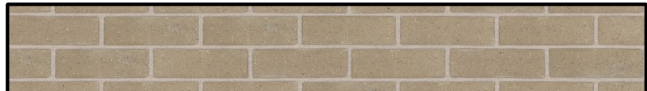

③ SOUTH ELEVATION - MECHANIC STREET
SCALE: 1" = 20'-0"



④ WEST ELEVATION - ADAMS STREET
SCALE: 1" = 20'-0"

ENLARGED ELEVATION

1 MATERIALS LEGEND
SCALE: N.T.S.

-  COLOR - 558A BLUE SHADOW
-  COLOR - 449A BUCKSKIN
-  COLOR - 396 ALABASTER
- STUCCO/ EIFS FINISH**
-  COLOR - BRONZE METALLIC
- ALUMINUM SILLS, BANDS AND CORNICES**
-  COLOR - MALMO
-  COLOR - ROSEWOOD
- BRICK - GLEN GERY - STRETCHER BOND**



1 MATERIALS LEGEND
SCALE: N.T.S.

2 NORTH ELEVATION - 3RD STREET
SCALE: 1/8" = 1'-0"

CORNER OF 3RD ST. & ADAMS ST.



CORNER OF 3RD ST. & ADAMS ST.



3RD ST.



CORNER OF ADAMS ST. & MECHANIC ST.



THANK YOU.

