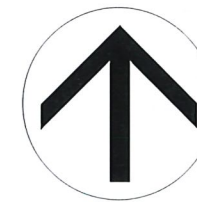
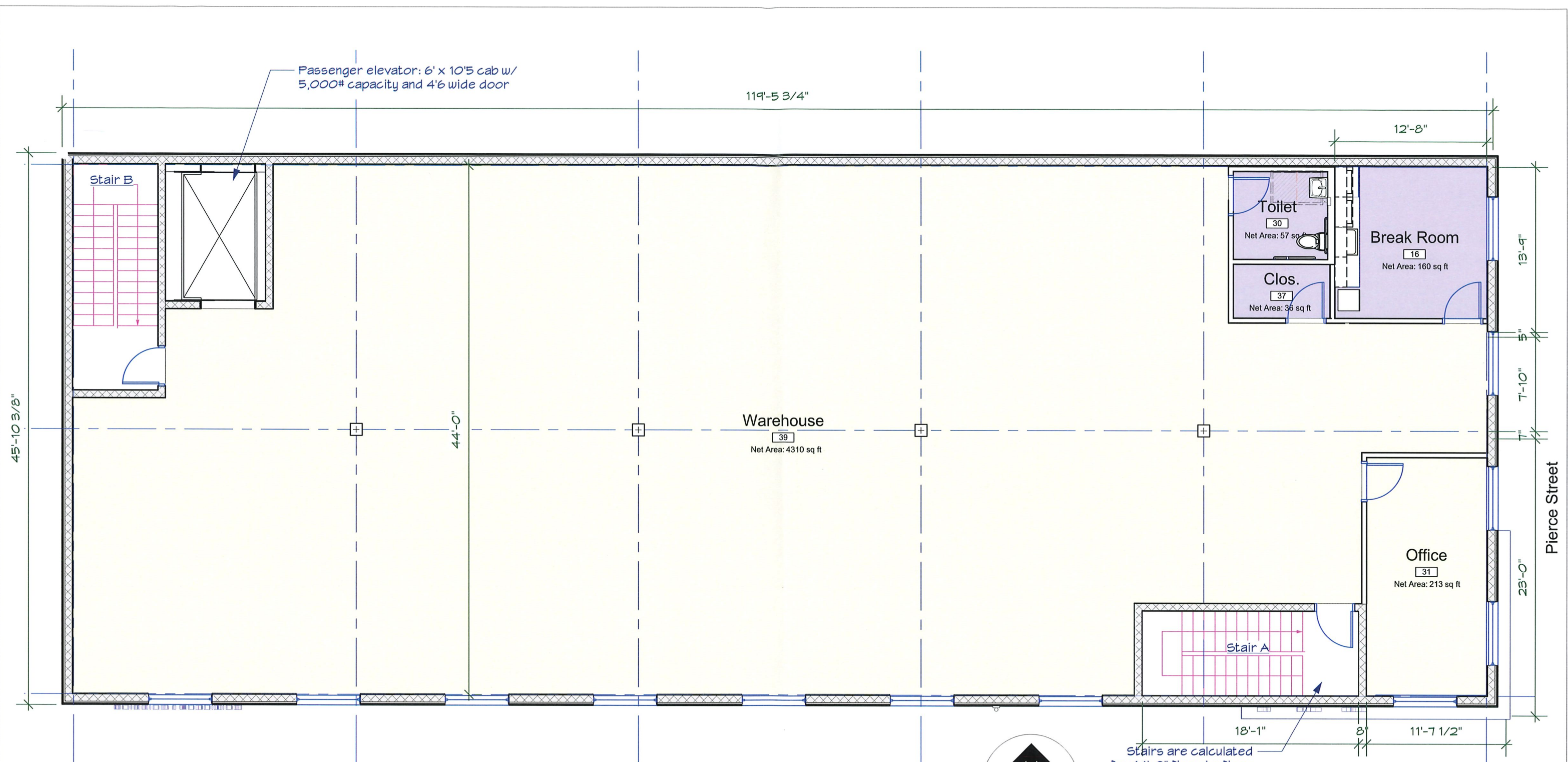
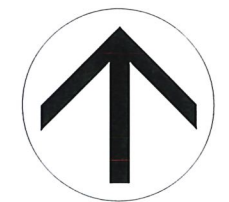


First Floor Plan
Scale: 1/8" = 1'-0"





Second Floor Plan
Scale: 1/8" = 1'-0"

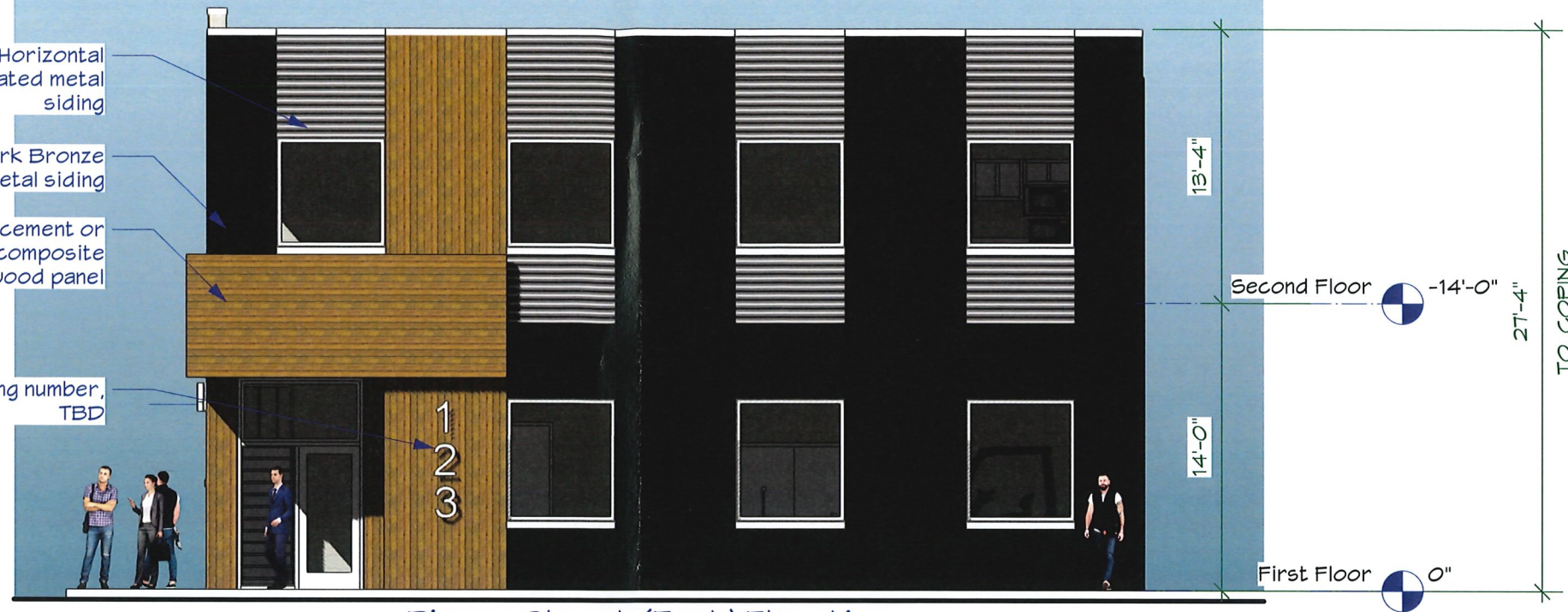


Horizontal
corrugated metal
siding

Dark Bronze
vertical metal siding

Fiber cement or
alum. composite
wood panel

Building number,
TBD



Pierce Street (East) Elevation
Scale: 1/8" = 1'-0"



Wall sconce lighting

Evans Street (South Elevation)
Scale: 1/8" = 1'-0"

Entrance canopy w/ fiber
cement or aluminum
composite wood siding

4/4
ARCHITECTURE

414 W. Broad Street, Suite 200
Bethlehem, Pennsylvania 18018
610.509.5992

All drawings and written
materials appearing herein
constitute original and
unpublished work of the architect
and may not be used or
disclosed without prior consent of
4/4 Architecture, LLC
Copyrighted 2022

Cantelmi E-Commerce

Evans & Pierce Street
Bethlehem, PA 18015

Elevations

Cantelmi E-Commerce_optionC.vwx

Issue Date: 13 January 2022

Description: Plans

Drawn By: GaL

Sk-3

3 OF 4



4/4
ARCHITECTURE

414 W. Broad Street, Suite 200
Bethlehem, Pennsylvania 18018
610.509.5992

All drawings and written materials appearing herein constitute original and unpublished work of the architect and may not be used or disclosed without prior consent of 4/4 Architecture, LLC Copyrighted 2022

Cantelmi E-Commerce

Evans & Pierce Street
Bethlehem, PA 18015

Perspective

Cantelmi E-Commerce_optionC.vwx

Issue Date: 13 January 2022

Description: Plans

Drawn By: GaL

Sk-4

4 OF 4