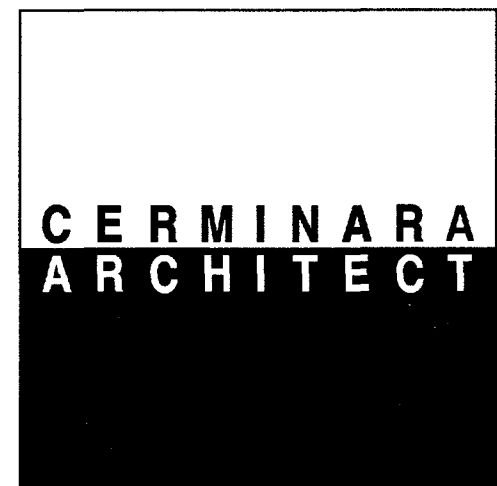
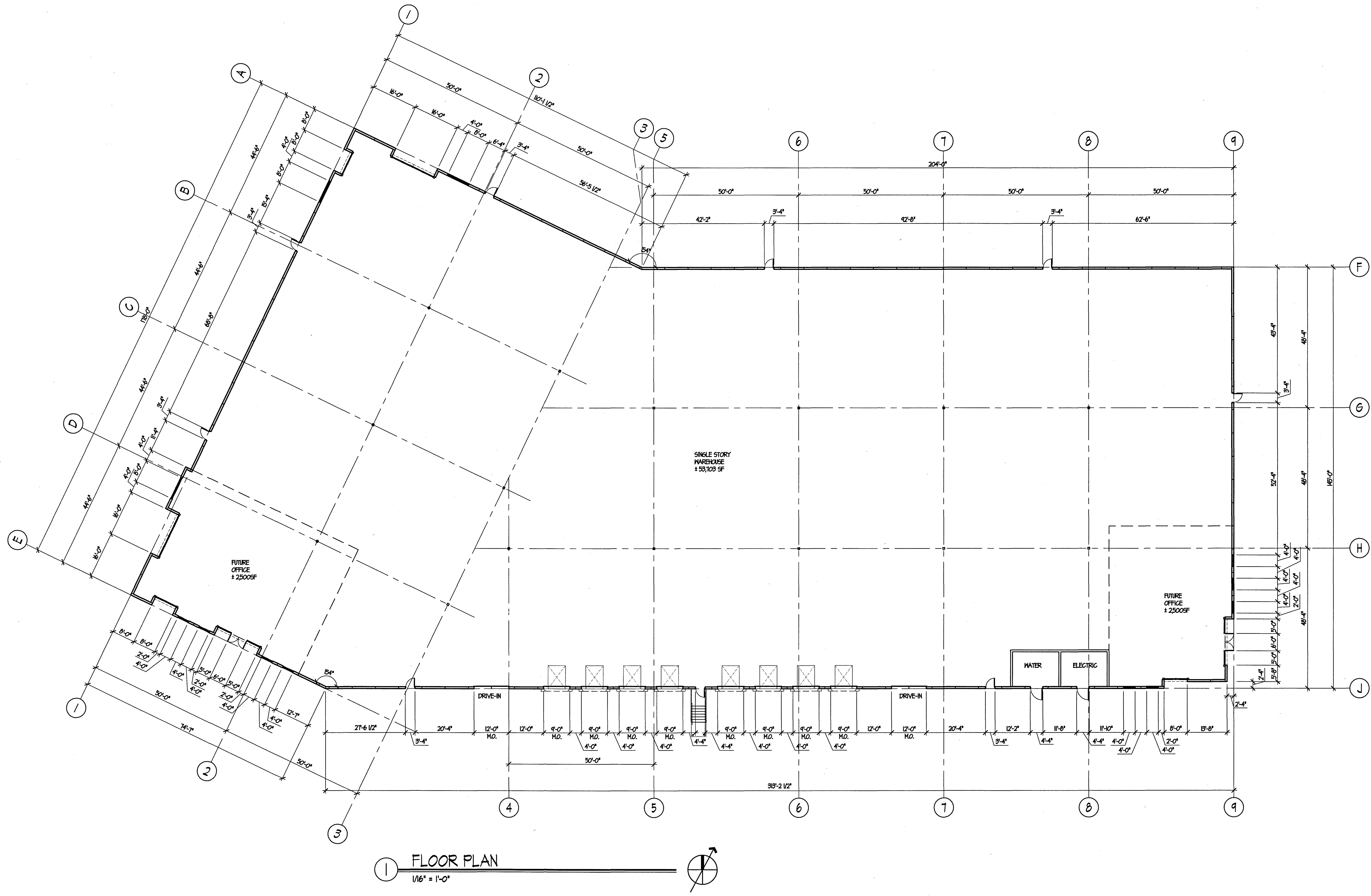


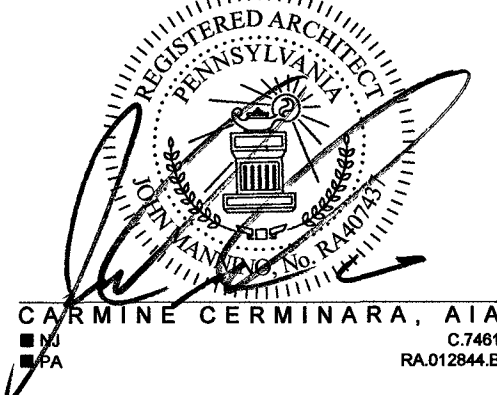
REVISIONS		
REV#	DATE	DESCRIPTION
01	MAR 22	ISSUED FOR MUNICIPAL REVIEW

This drawing and all information contained herein is authorized for use only by the party for whom the work was contracted or to whom it is certified. This drawing may not be copied, reused, disclosed, distributed or relied upon for any other purpose without the written consent of Cerminara Architect.

Copyright 2022, Cerminara Architect All Rights Reserved



224 COURTYARD DRIVE
HILLSBOROUGH, NJ 08844
PHONE 908.685.7700 | FAX 908.685.3019
WWW.CERMINARAARCHITECT.COM

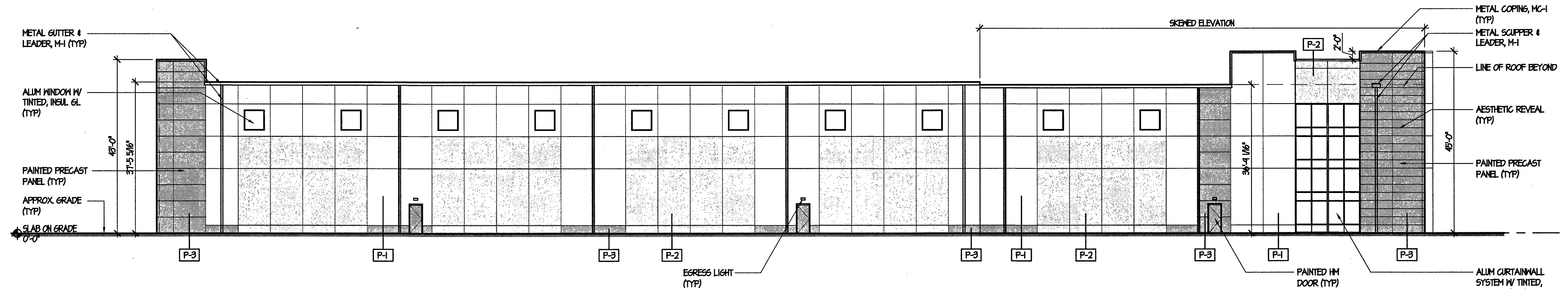


JOHN MANNINO, AIA
■ NJ C7461
■ PA RA.012844.9
■ NY RA07457
■ CT 030569-1
ARL.0014533

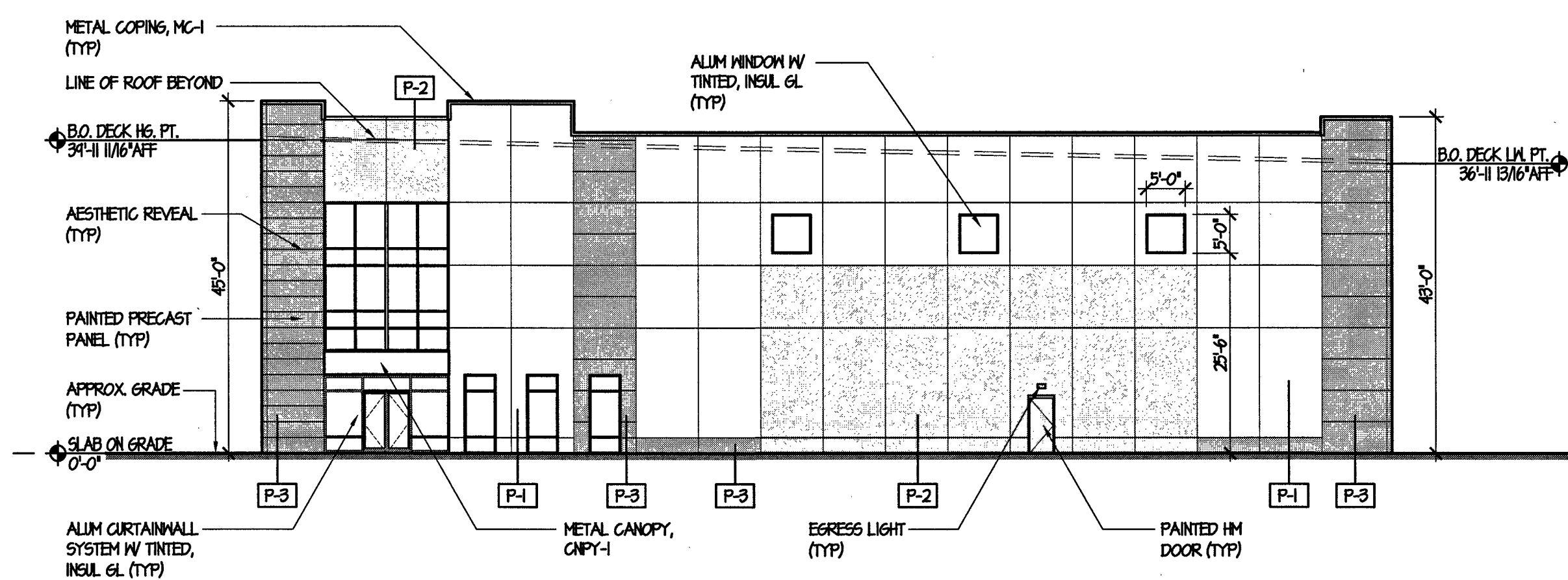
LVIP VII - LOT 90
SPEC BUILDING
1010 HARVARD AVENUE
NORTHAMPTON COUNTY
BETHLEHEM, PA

FLOOR PLAN	
SCALE	AS NOTED
DATE	COMMISSION
01 MAR 22	2/033
DRAWN BY	REVISION
OA	
CHECKED BY	
JM	
SHEET	DRAWING

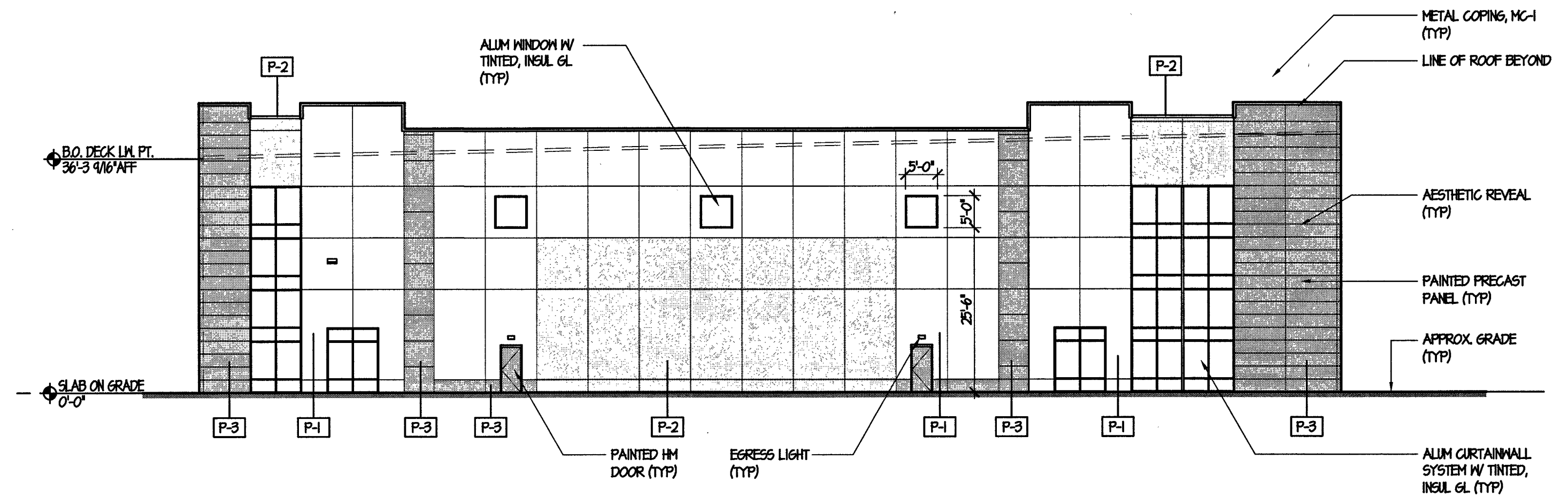
EXTERIOR MATERIAL SELECTIONS				
SYMBOL	LOCATION	MANUFACTURER	SIZE & TYPE	COLOR
P-1	PRECAST PANEL PAINT COLOR	BEHR	N/A	NEO-11 PIXEL WHITE
P-2	PRECAST PANEL PAINT COLOR	BEHR	N/A	NEO-20 SILVER BULLET
P-3	PRECAST PANEL PAINT COLOR	BEHR	N/A	NEO-41 COOL ASHES
MC-1	METAL CAP FLASHING	ECONO COPING LT BY UNIVERSAL METAL SYSTEMS	6" FACE	REGAL WHITE SLABS
M-1	METAL GUTTER & LEADERS	ATAS OR EQUAL	10" GUTTER, 5"x6" LEADERS	TO MATCH MC-1
GL-1	GLASS	PPG OR EQUAL	1" IGU, LOW E	GRAY TINTED
AL	ALUMINUM FRAMES	TUBELITE OR EQUAL		CLEAR ANODIZED LAYERS OF OCEAN 5520-6 (TO MATCH LOT B)
CNRY-1	METAL CANOPY @ OFFICE ENTRANCES	BEHR		



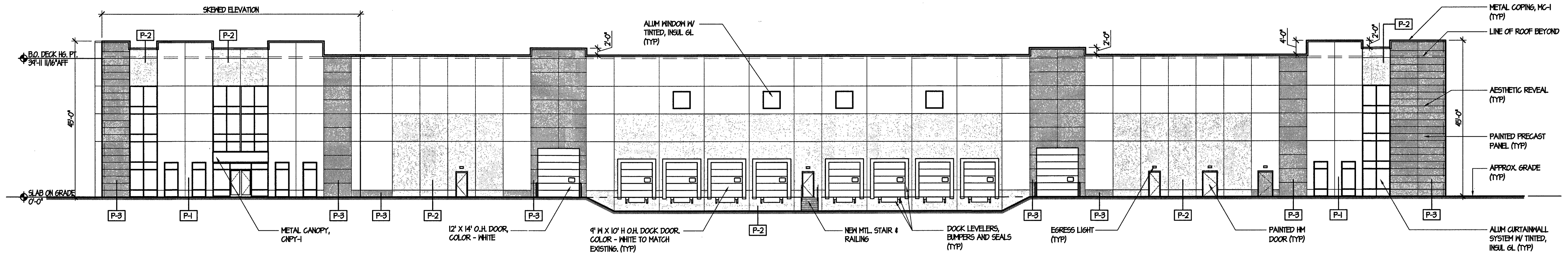
④ NORTH ELEVATION
1/16"=1'-0"



③ EAST ELEVATION
1/16"=1'-0"



② WEST ELEVATION
1/16"=1'-0"



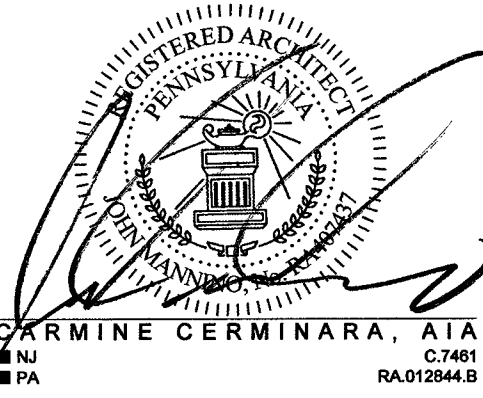
① SOUTH ELEVATION
1/16"=1'-0"

REVISIONS		
REV#	DATE	DESCRIPTION
1	01 MAR 22	ISSUED FOR MUNICIPAL REVIEW

This drawing and all information contained herein is authorized for use only by the party to whom the work was contracted or to whom it is certified. This drawing may not be copied, reused, disclosed, distributed or relied upon for any other purpose without the written consent of Cerminara Architect.

CERMINARA ARCHITECT

224 COURTYARD DRIVE
HILLSBOROUGH, NJ 08844
PHONE: 908.685.7700 | FAX: 908.3019
WWW.CERMINARAARCHITECT.COM



JOHN MANNINO, AIA
NJ: 21A02015200
PA: RA07487
NY: 03805-1
CT: ARJ0014533

LVIP VII - LOT 90
SPEC BUILDING
1010 HARVARD AVENUE
NORTHAMPTON COUNTY
BETHLEHEM, PA

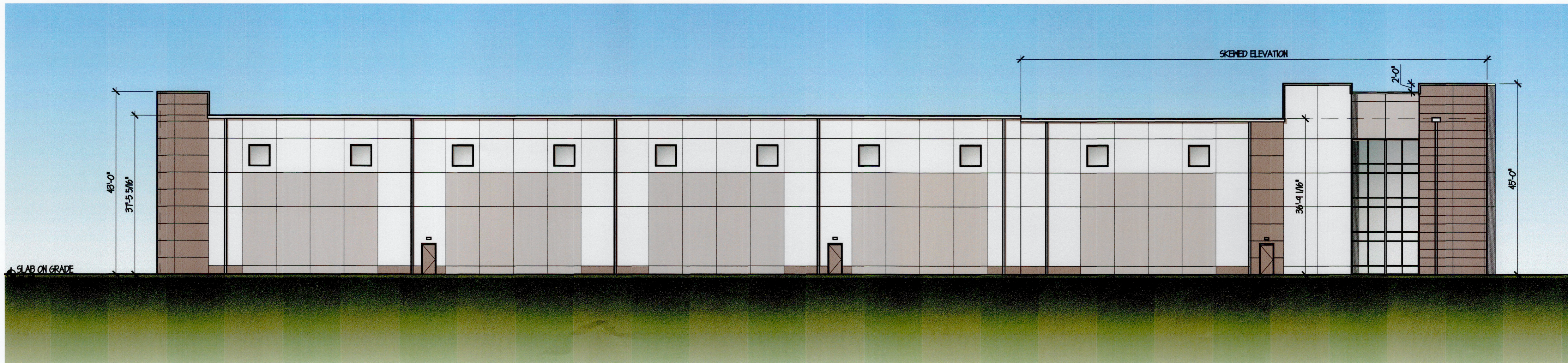
EXTERIOR ELEVATIONS
SCALE: AS NOTED

DATE: 01 MAR 22
COMMISSION: 21033
DRAWN BY: OA
REVISION:
CHECKED BY: JM
SHEET: 0
DRAWING:

REVISIONS

REV# DATE DESCRIPTION
01 MAR 22 ISSUED FOR MUNICIPAL REVIEW

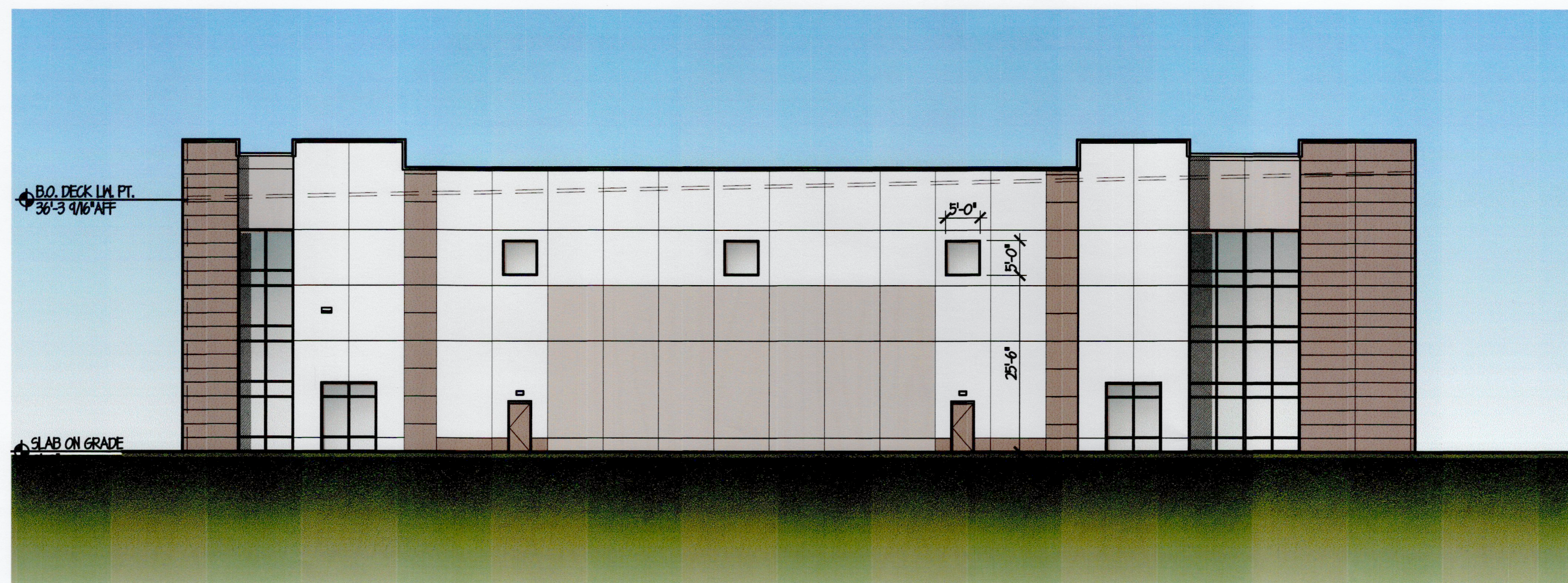
This drawing and all information contained herein is authorized for use only by the party for whom the work was conducted or to whom it is certified. This drawing may not be copied, reused, disclosed, distributed or relied upon for any other purpose without the written consent of Cerminara Architect.
Copyright 2022, Cerminara Architect All Rights Reserved



4 NORTH ELEVATION
1/16"=1'-0"



3 EAST ELEVATION
1/16"=1'-0"



2 WEST ELEVATION
1/16"=1'-0"



1 SOUTH ELEVATION
1/16"=1'-0"

CERMINARA
ARCHITECT

224 COURTYARD DRIVE
HILLSBOROUGH, NJ 08844
PHONE: 908.685.7700 | FAX: 908.685.3019
WWW.CERMINARAARCHITECT.COM

REGISTERED ARCHITECT
PENNSYLVANIA
CARMINE CERMINARA, AIA
RA 0128443
JOHN MANNINO, AIA
21A02015200
RA067437
038863-1
ARI 0014533

LVIP VII - LOT 90
SPEC BUILDING

1010 HARVARD AVENUE
NORTHAMPTON COUNTY
BETHLEHEM, PA

EXTERIOR
RENDERING

SCALE AS NOTED

DATE 01 MAR 22 COMMISSION 21033

DRAWN BY OA REVISION

CHECKED BY JM

SHEET DRAWING

A3