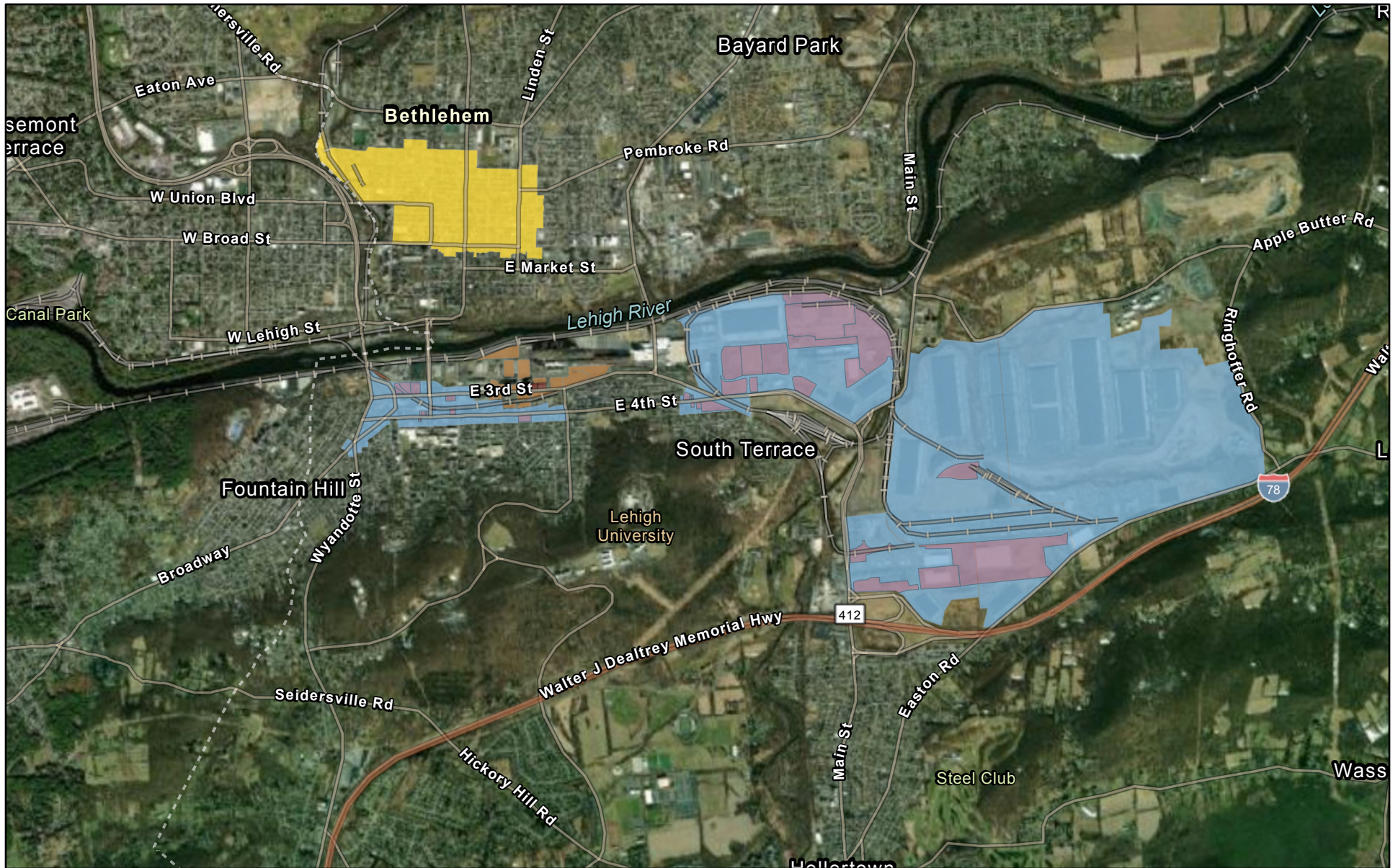
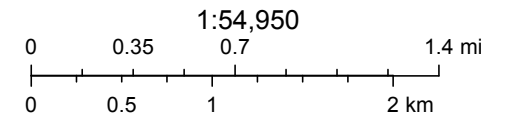


2022 Southside LERTA Analysis



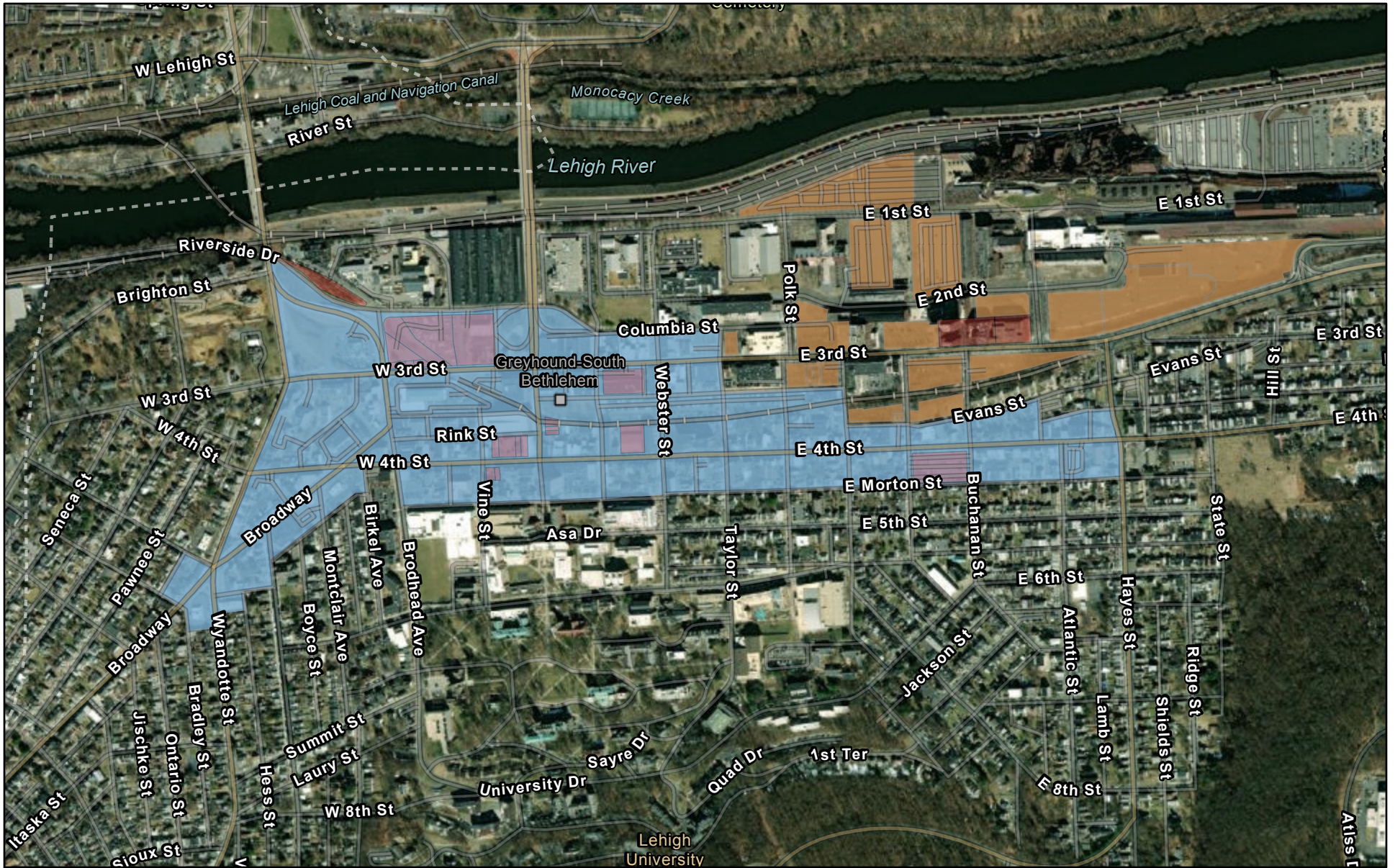
5/3/2022

- Yellow - NS2027 LERTA exp 12-31-23
- Blue - SS LERTA exp 12-31-22
- Orange - AH LERTA exp 12-31-26
- Red - proposed LERTA parcels

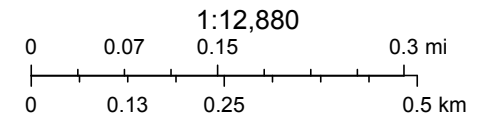


Source: Esri, Maxar, GeoEye, Earthstar Geographics, CNES/Airbus DS, USDA, USGS, AeroGRID, IGN, and the GIS User Community

2022 Southside LERTA Analysis

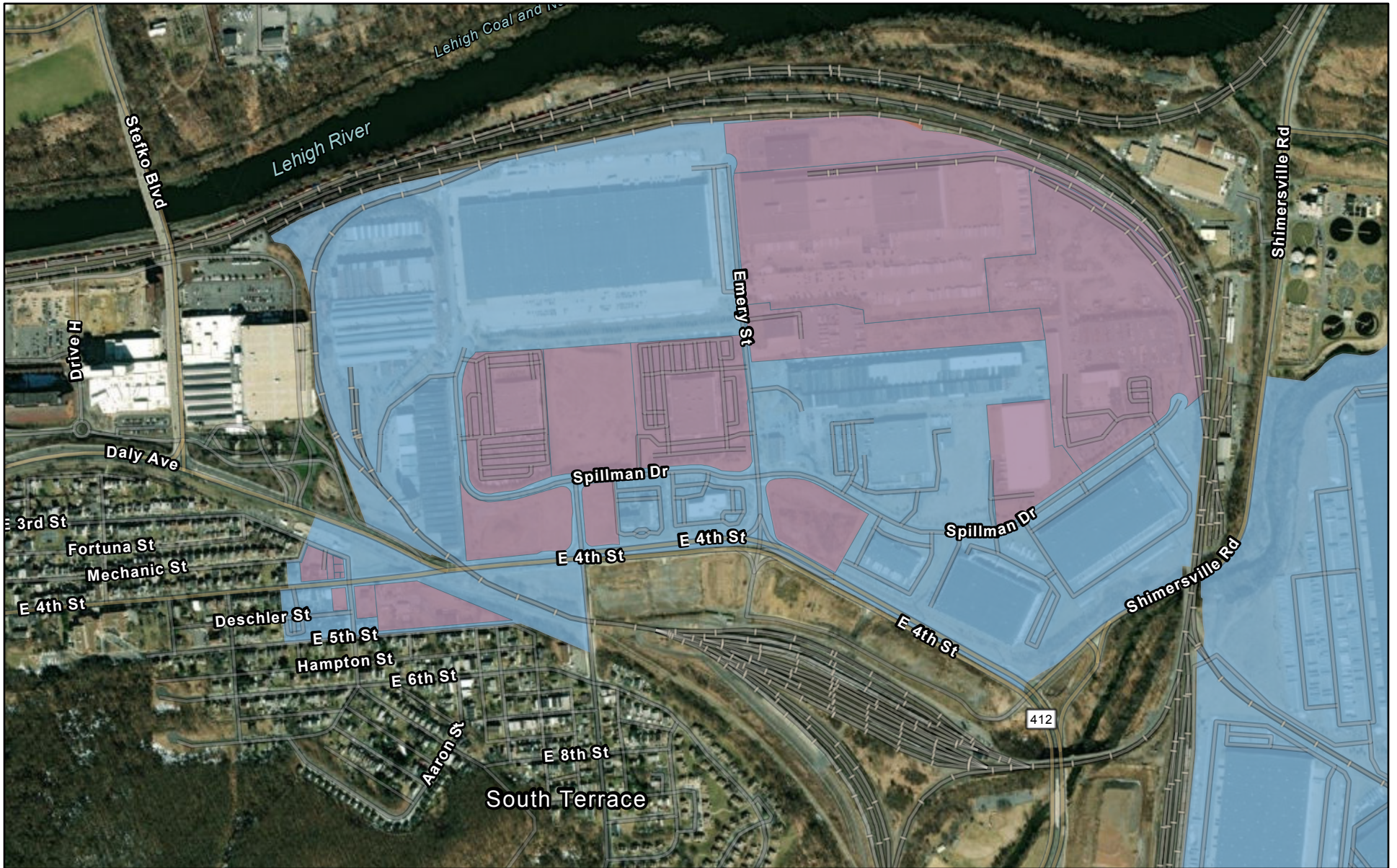


Blue - SS LERTA exp 12-31-22
Orange - AH LERTA exp 12-31-26
Red - proposed LERTA parcels



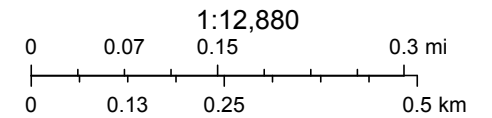
Source: Esri, Maxar, GeoEye, Earthstar Geographics, CNES/Airbus DS, USDA, USGS, AeroGRID, IGN, and the GIS User Community

2022 Southside LERTA Analysis



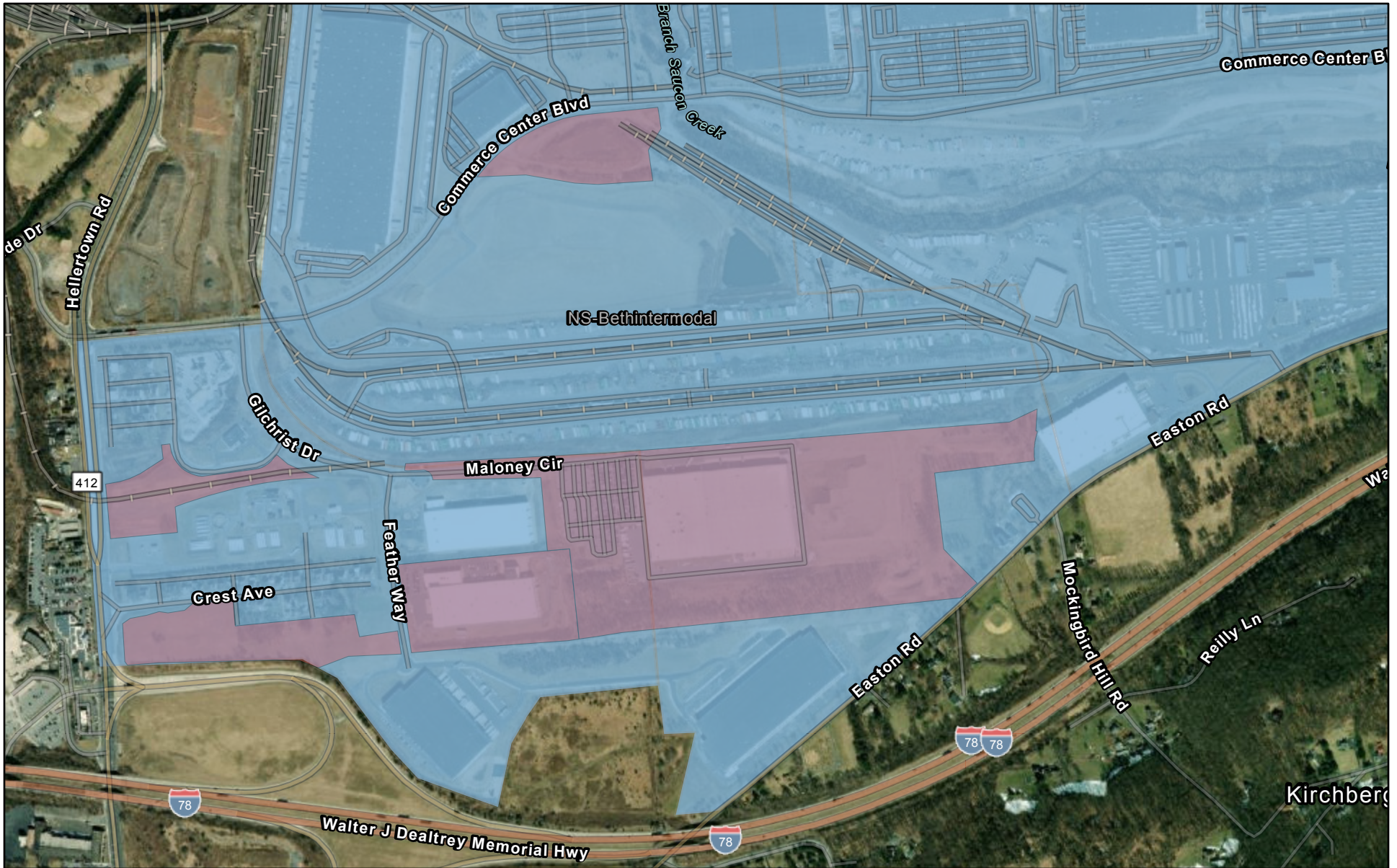
5/3/2022

Blue - SS LERTA exp 12-31-22
Red - proposed LERTA parcels



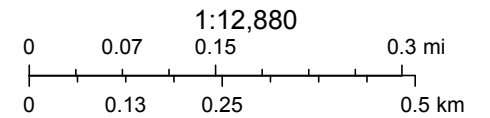
Source: Esri, Maxar, GeoEye, Earthstar Geographics, CNES/Airbus DS, USDA, USGS, AeroGRID, IGN, and the GIS User Community

2022 Southside LERTA Analysis



5/3/2022

Blue - SS LERTA exp 12-31-22
Red - proposed LERTA parcels



Source: Esri, Maxar, GeoEye, Earthstar Geographics, CNES/Airbus DS, USDA, USGS, AeroGRID, IGN, and the GIS User Community