



**ARTSQUEST SouthSide Cultural Center**  
HCC Submission October 24, 2022 (November 21, 2022 HCC mtg.)

APPLICANT: MKSD architects, TODD CHAMBERS, AIA  
OWNER: ARTSQUEST, Kassie Hilgert, CEO

PREVIOUS APPLICATION  
THICKER, HIGHER OVERHANG



ARTSQUEST SouthSide Cultural Center  
HCC Submission October 24, 2022 (November 21, 2022 HCC mtg.)

PERSPECTIVE VIEW  
3RD & NORTHAMPTON STREETS

ARTSQUEST  
imagine that

MK  
SD  
architects

PROPOSED REVISION  
SLIMMER, LOWER OVERHANG



ARTSQUEST SouthSide Cultural Center  
HCC Submission October 24, 2022 (November 21, 2022 HCC mtg.)

PERSPECTIVE VIEW  
3RD & NORTHAMPTON STREETS

ARTSQUEST™  
imagine that

MK  
SD  
architects

PREVIOUS APPLICATION  
THICKER, HIGHER OVERHANG



ARTSQUEST SouthSide Cultural Center  
HCC Submission October 24, 2022 (November 21, 2022 HCC mtg.)

PERSPECTIVE VIEW  
FROM PARKING LOT (NORTH ELEVATION)

ARTSQUEST  
imagine that

MK  
SD  
architects

PROPOSED REVISION  
SLIMMER, LOWER OVERHANG



ARTSQUEST SouthSide Cultural Center  
HCC Submission October 24, 2022 (November 21, 2022 HCC mtg.)

PERSPECTIVE VIEW  
NORTHAMPTON STREET

ARTSQUEST™  
imagine that

MK  
SD  
architects

PREVIOUS APPLICATION  
THICKER, HIGHER OVERHANG



ARTSQUEST SouthSide Cultural Center  
HCC Submission October 24, 2022 (November 21, 2022 HCC mtg.)

PROPOSED REVISION  
SLIMMER, LOWER OVERHANG



ARTSQUEST SouthSide Cultural Center  
HCC Submission October 24, 2022 (November 21, 2022 HCC mtg.)

PREVIOUS APPLICATION  
THICKER, HIGHER OVERHANG



ARTSQUEST SouthSide Cultural Center  
HCC Submission October 24, 2022 (November 21, 2022 HCC mtg.)



PROPOSED REVISION  
SLIMMER, LOWER OVERHANG

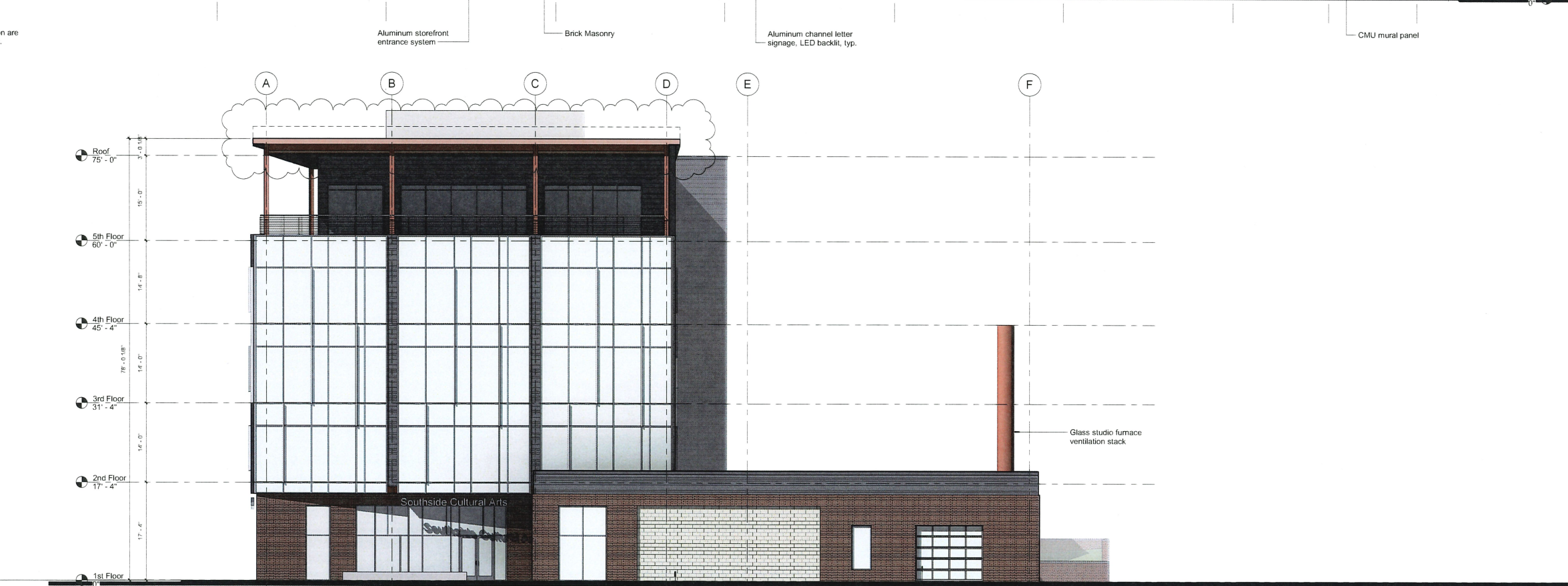


ARTSQUEST SouthSide Cultural Center  
HCC Submission October 24, 2022 (November 21, 2022 HCC mtg.)



**1 South Elevation**  
1/8" = 1'-0"

NOTE: All notes on this elevation are typical for all building elevations.



**2 East Elevation**  
1/8" = 1'-0"

1 North Elevation  
1/8" = 1'-0"



2 West Elevation  
1/8" = 1'-0"

