



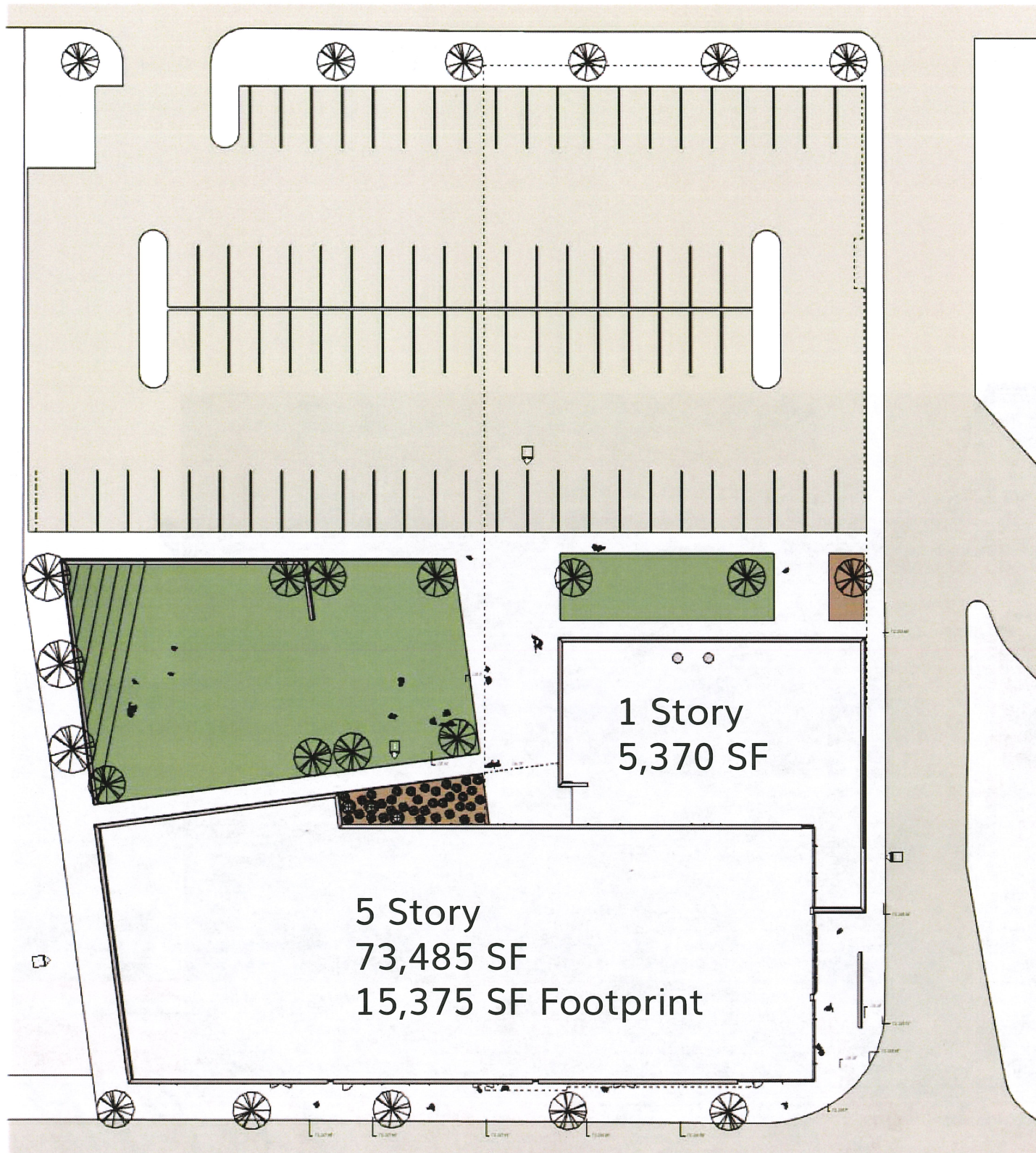
ARTSQUEST SouthSide Cultural Center
HCC Submission August 22, 2022 (September 19, 2022 HCC mtg.)

APPLICANT: MKSD architects, TODD CHAMBERS, AIA
OWNER: ARTSQUEST, Kassie Hilgert, CEO

TABLE OF CONTENTS

Existing Building Streetscape	3-4
Proposed Elevation Streetscape	5
Proposed Elevation Scale Drawing	6
Perspective Views	7
Storefront & Window Details	8
Facade Details	9
Signage Details - Wall Sign	10
Signage Details - Blade Sign	11
Signage Details - Window Graphics	12
Exterior Finishes Palette	13





RESOLUTION NO. 2022-167

RE: CERTIFICATE OF APPROPRIATENESS UNDER THE PROVISIONS OF THE ACT OF THE PENNSYLVANIA LEGISLATURE 1961, JUNE 13, P.L. 282 (53 SECTION 8004) AND BETHLEHEM ORDINANCE NO. 3952 AS AMENDED.

WHEREAS, it is proposed to secure a COA to construct a new cultural center at the site of the current Banana Factory Arts Center at 25 West Third Street.

NOW, THEREFORE, BE IT RESOLVED by the Council of the City of Bethlehem that a Certificate of Appropriateness is hereby granted for the proposal.

Sponsored by: /s/ Grace Crampsie Smith

/s/ Michael G. Colón

ADOPTED BY COUNCIL THIS 2ND DAY OF AUGUST, 2022.

/s/ Michael G. Colón
President of Council

HISTORIC CONSERVATION COMMISSION

CASE #797 -- It is proposed to secure a COA to construct a new cultural center at the site of the current Banana Factory Arts Center at 25 West Third Street.

OWNER / APPLICANT: Kassie Hilgert / Todd Chambers

The Commission upon motion by Mr. Simonson and seconded by Mr. Hudak failed to adopt the proposal that City Council issue a Certificate of Appropriateness for the proposed work as presented and described herein:

1. The proposal to construct a new cultural center at the site of the current Banana Factory Arts Center was presented by Kassie Hilgert and Todd Chambers.
2. The proposed new cultural center includes the following details:
 - a. demolish all existing structures at current site
 - b. construct new, semi-detached, 5-story, steel-frame structure with flat roof as well as mix of brick and metal-panel siding stretching along entire width of site facing West Third Street and connected to new, semi-detached, 1-story, brick masonry, ancillary structure with flat roof facing Northampton Street
 - c. main structure measures approx. 200-feet wide x 130-feet deep x 80-feet high while secondary structure measures approx. 90-feet wide x 40-feet deep x 19.5-feet high
 - d. immediately to rear (north) of both structures is plaza with green space, entrance into main structure and service entrance for secondary structure while northern half of site is dedicated to parking

STREETSCAPE RHYTHM OF FACADES

NARROW WIDTHS: 18'-20'

WIDER WIDTHS: 36'-40'



HORIZONTAL ORGANIZATION OF FACADES

TOP: CORNICELINES

MIDDLE: SOLID FACADES WITH "PUNCHED" WINDOW OPENINGS

BASE: STOREFRONTS, LARGE WINDOWS



STREETSCAPE RHYTHM OF FACADES

UPPER FENESTRATION: VARIED SIZES AND SPACINGS

LOWER FENESTRATION: VARIED WIDTHS AND IRREGULAR PATTERN





WINDOW PATTERN,
Derived from binary code



ARTSQUEST SouthSide Cultural Center
HCC Submission August 22, 2022 (September 19, 2022 HCC mtg.)

BUILDING ELEVATION
3RD STREET FACADE

ARTSQUEST
imagine that

MKSD
architects

A

0110000 01

R

011 100 10

T

011 101 00

F

011001 10

O

011 011 10

R

011 100 10

A

0110000 01

L

011 011 00

L

011 011 00

PREVIOUS APPLICATION
6' 5TH FLOOR SETBACK



ARTSQUEST SouthSide Cultural Center
HCC Submission August 22, 2022 (September 19, 2022 HCC mtg.)

PERSPECTIVE VIEW
3RD & NORTHAMPTON STREETS

ARTSQUEST
imagine that

**MK
SD**
architects

PROPOSED REVISION
INCREASED 5TH FLOOR SETBACK TO 12'



ARTSQUEST SouthSide Cultural Center
HCC Submission August 22, 2022 (September 19, 2022 HCC mtg.)

PERSPECTIVE VIEW
3RD & NORTHAMPTON STREETS

ARTSQUEST
imagine that

**MK
SD**
architects



PREVIOUS APPLICATION
STOREFRONTS DOWN TO SIDEWALK



FOWLER GALLERY

PROPOSED REVISION
ADD GRANITE APRON @ STOREFRONTS
ALONG 3RD STREET

ARTSQUEST SouthSide Cultural Center
HCC Submission August 22, 2022 (September 19, 2022 HCC mtg.)

PERSPECTIVE VIEW
3RD & NORTHAMPTON STREETS

ARTSQUEST
imagine that

**MK
SD**
architects



PROPOSED REVISION
ADD GRANITE APRON @ STOREFRONTS
ALONG 3RD STREET

ARTSQUEST SouthSide Cultural Center
HCC Submission August 22, 2022 (September 19, 2022 HCC mtg.)

PERSPECTIVE VIEW
3RD & NORTHAMPTON STREETS

ARTSQUEST
imagine that

**MK
SD**
architects

PREVIOUS APPLICATION
6' 5TH FLOOR SETBACK



ARTSQUEST SouthSide Cultural Center
HCC Submission August 22, 2022 (September 19, 2022 HCC mtg.)

PERSPECTIVE VIEW
3RD STREET LOOKING EAST

ARTSQUEST
imagine that

**MK
SD**
architects

PROPOSED REVISION
INCREASED 5TH FLOOR SETBACK TO 12'



ARTSQUEST SouthSide Cultural Center
HCC Submission August 22, 2022 (September 19, 2022 HCC mtg.)

PERSPECTIVE VIEW
3RD STREET LOOKING EAST

ARTSQUEST
imagine that

**MK
SD**
architects



ARTSQUEST SouthSide Cultural Center
HCC Submission August 22, 2022 (September 19, 2022 HCC mtg.)

PERSPECTIVE VIEW
2ND STREET/PARKING LOT (NORTH ELEV.)





ARTSQUEST SouthSide Cultural Center
HCC Submission August 22, 2022 (September 19, 2022 HCC mtg.)

PERSPECTIVE VIEW
FROM PARKING LOT





ARTSQUEST SouthSide Cultural Center
HCC Submission August 22, 2022 (September 19, 2022 HCC mtg.)

PERSPECTIVE VIEW
NORTH SIDE PLAZA





ARTSQUEST SouthSide Cultural Center
HCC Submission August 22, 2022 (September 19, 2022 HCC mtg.)

PERSPECTIVE VIEW
NORTH SIDE PLAZA





ARTSQUEST SouthSide Cultural Center
HCC Submission August 22, 2022 (September 19, 2022 HCC mtg.)

PERSPECTIVE VIEW
FROM PARKING LOT (NORTH ELEVATION)

ARTSQUEST
imagine that

**MK
SD**
architects



ARTSQUEST SouthSide Cultural Center
HCC Submission August 22, 2022 (September 19, 2022 HCC mtg.)

PERSPECTIVE VIEW
NORTHAMPTON STREET





ARTSQUEST SouthSide Cultural Center
HCC Submission August 22, 2022 (September 19, 2022 HCC mtg.)



ARTSQUEST SouthSide Cultural Center
HCC Submission August 22, 2022 (September 19, 2022 HCC mtg.)

PREVIOUS APPLICATION
6' 5TH FLOOR SETBACK



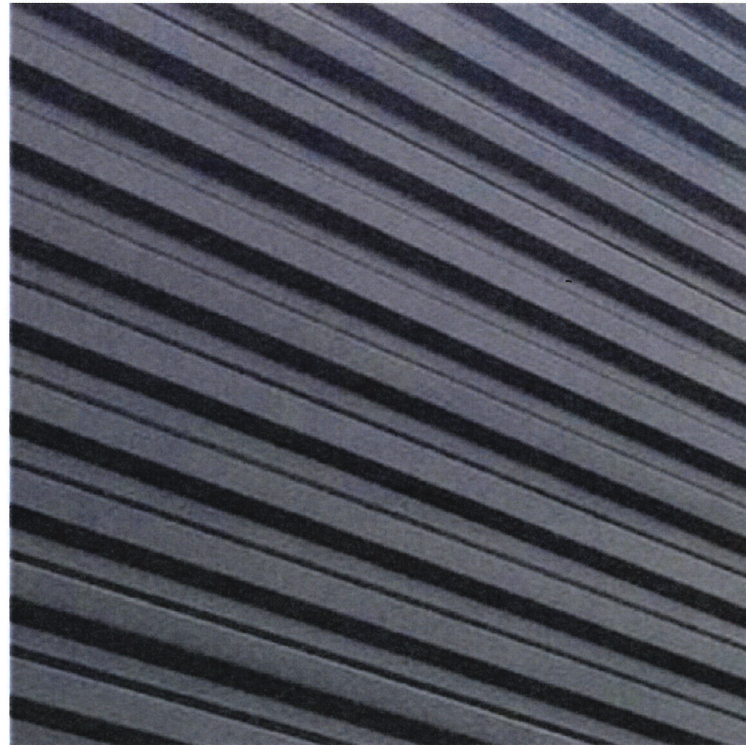
ARTSQUEST SouthSide Cultural Center
HCC Submission August 22, 2022 (September 19, 2022 HCC mtg.)



PROPOSED REVISION
INCREASED 5TH FLOOR SETBACK TO 12'

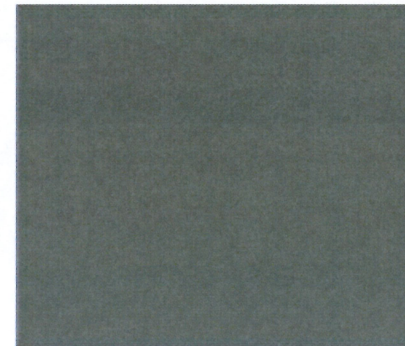
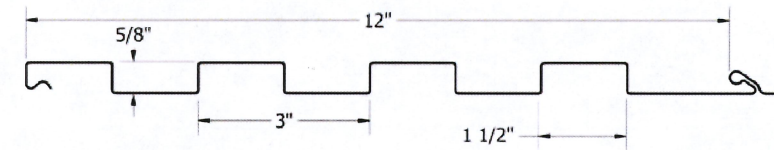


ARTSQUEST SouthSide Cultural Center
HCC Submission August 22, 2022 (September 19, 2022 HCC mtg.)

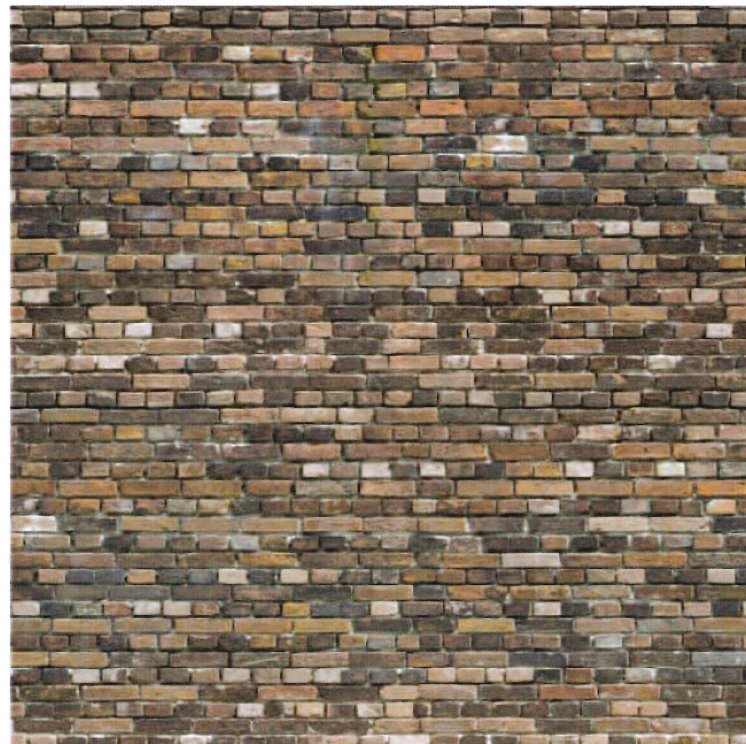
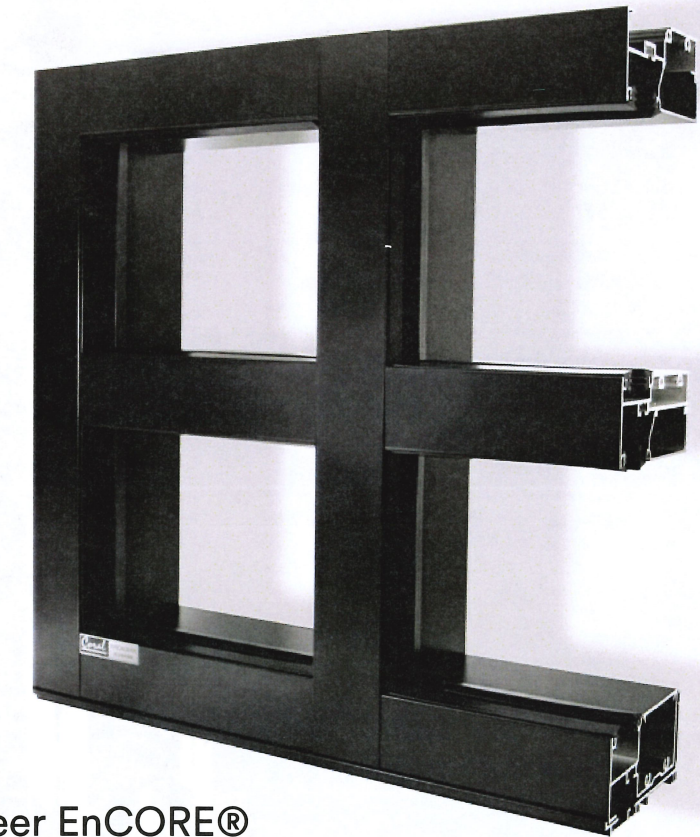
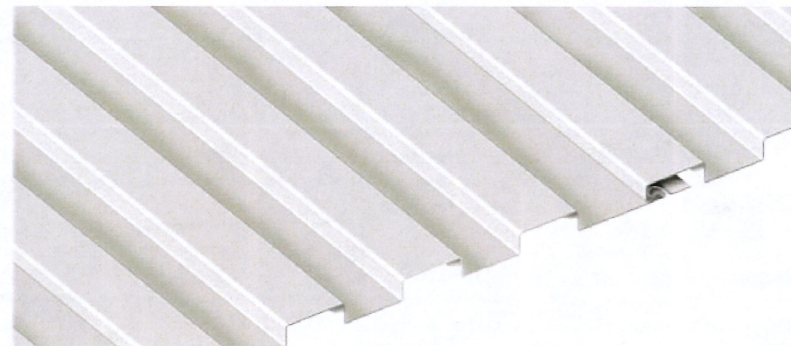


ATAS Metafor Dimensional Panel Siding System

- Ribbed panel emulates the scale of brick coursing
- 1-1/2" exposure (high)
- Factory painted finish
- Interlocking panels
- Concealed fasteners



Charcoal Grey (62)



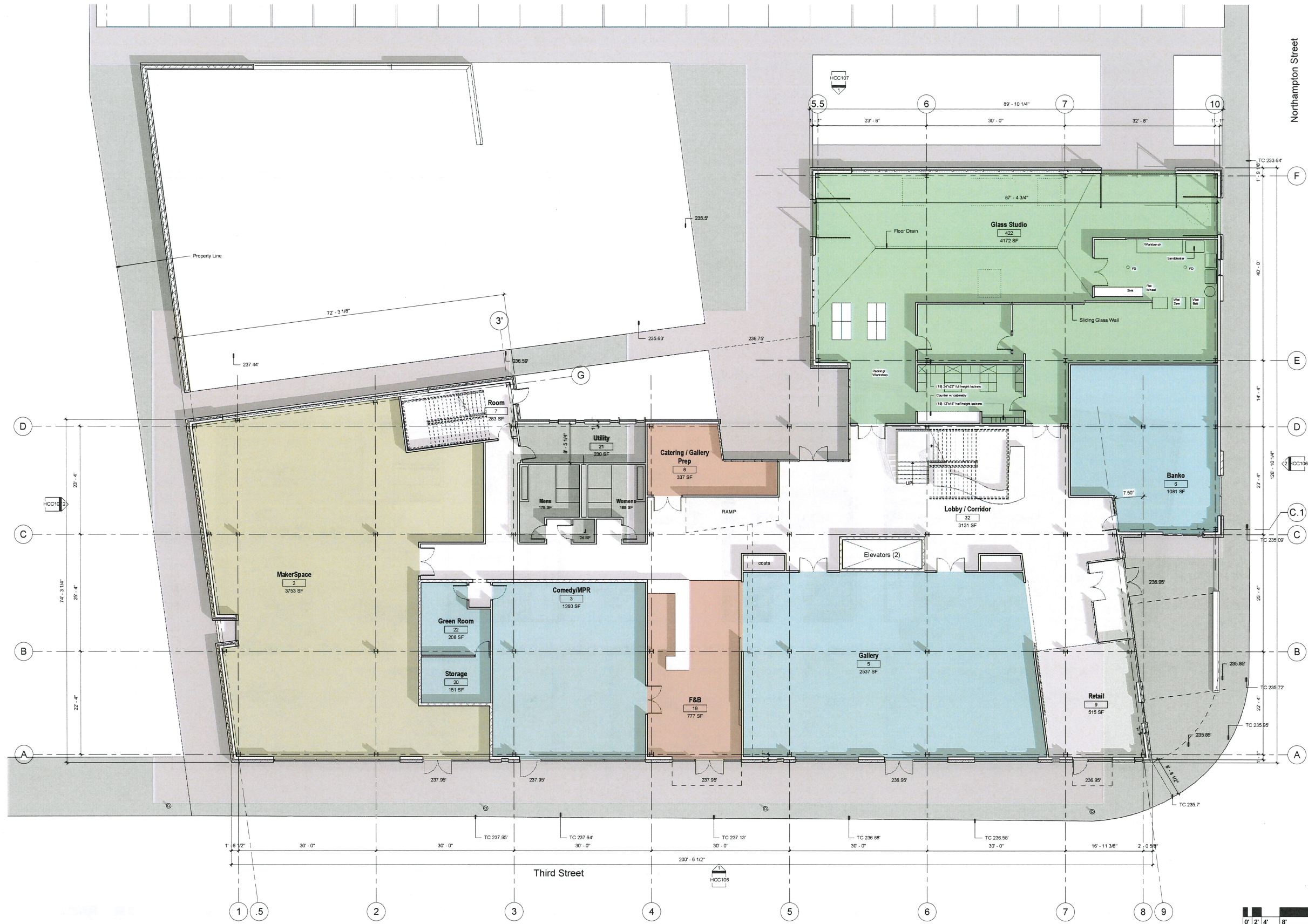
Hand Laid Brick Veneer

- Standard size brick units 3-5/8" x 2-1/4" x 8" (or similar)
- Common bond: Running bond pattern with intermittent courses of "header bricks" (bricks laid with their ends facing out).
- Varied coloration



Kawneer EnCORE® Framing System (or similar) Aluminum Storefront Framing System

- Black painted finish
- 2" sightline
- 5" & 7" (nominal) depths
- Front glazed
- Clear Glazing (no tint)



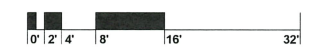
ArtsQuest Community Cultural Center

HCC101 First Floor Plan

April 18, 2022

ARTSQUEST
imagine that

MK SD
architects





ArtsQuest Community Cultural Center

HCC102 Second Floor Plan

April 18, 2022

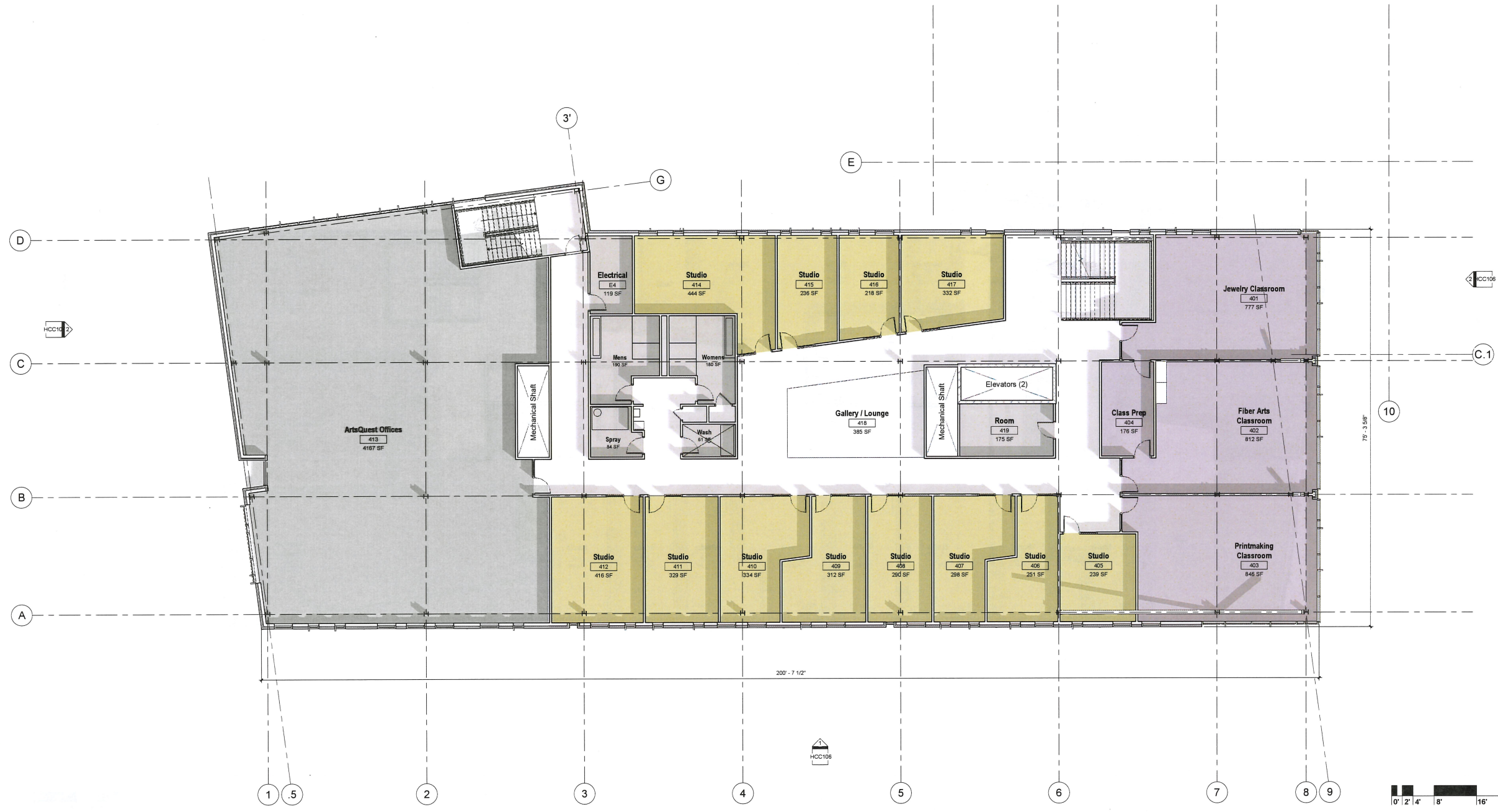


ArtsQuest Community Cultural Center

HCC103 Third Floor Plan

April 18, 2022

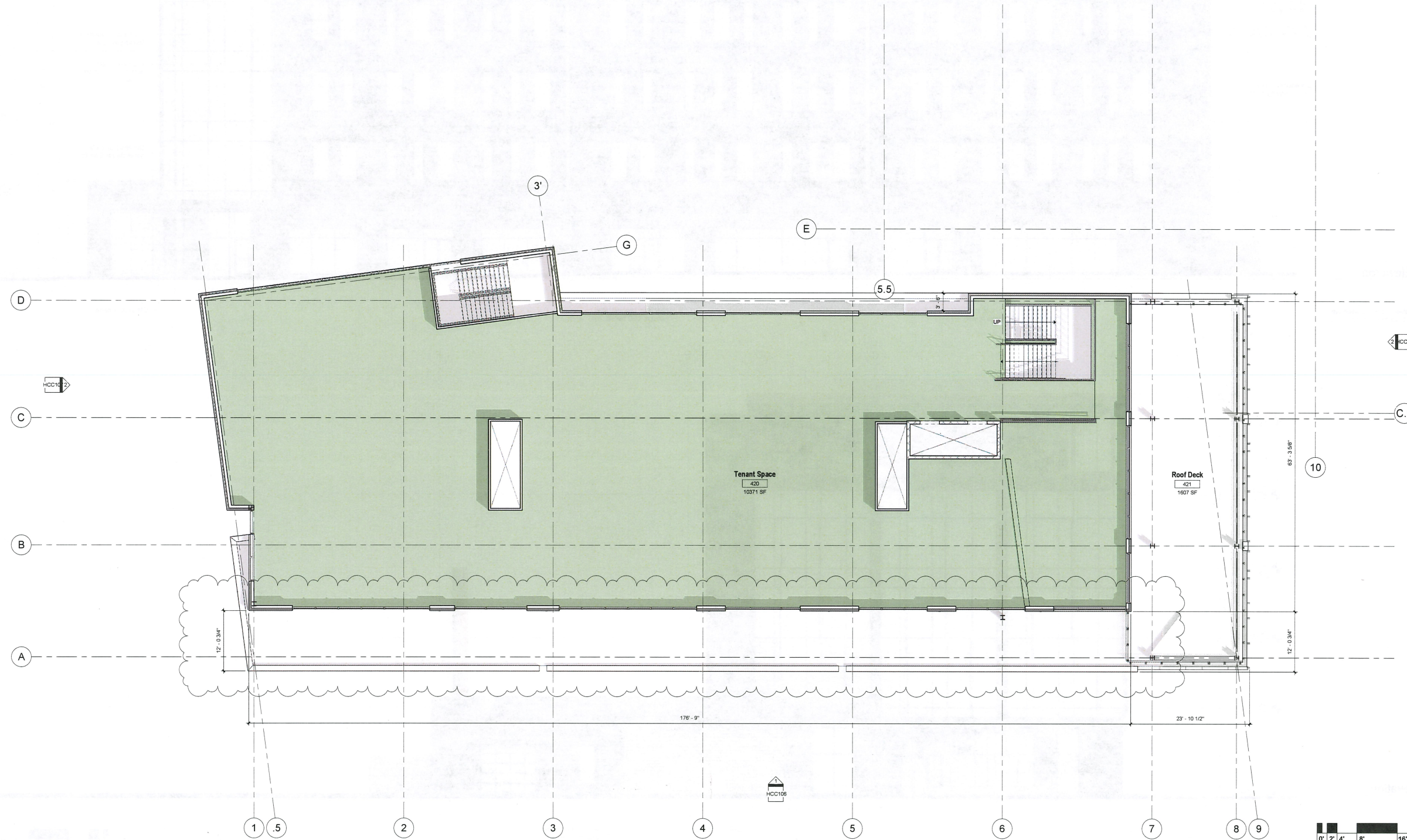




ArtsQuest Community Cultural Center

HCC104 Fourth Floor Plan

April 18, 2022



ArtsQuest

HCC105 Fifth Floor Plan

August 22, 2022

ARTSQUEST
imagine that

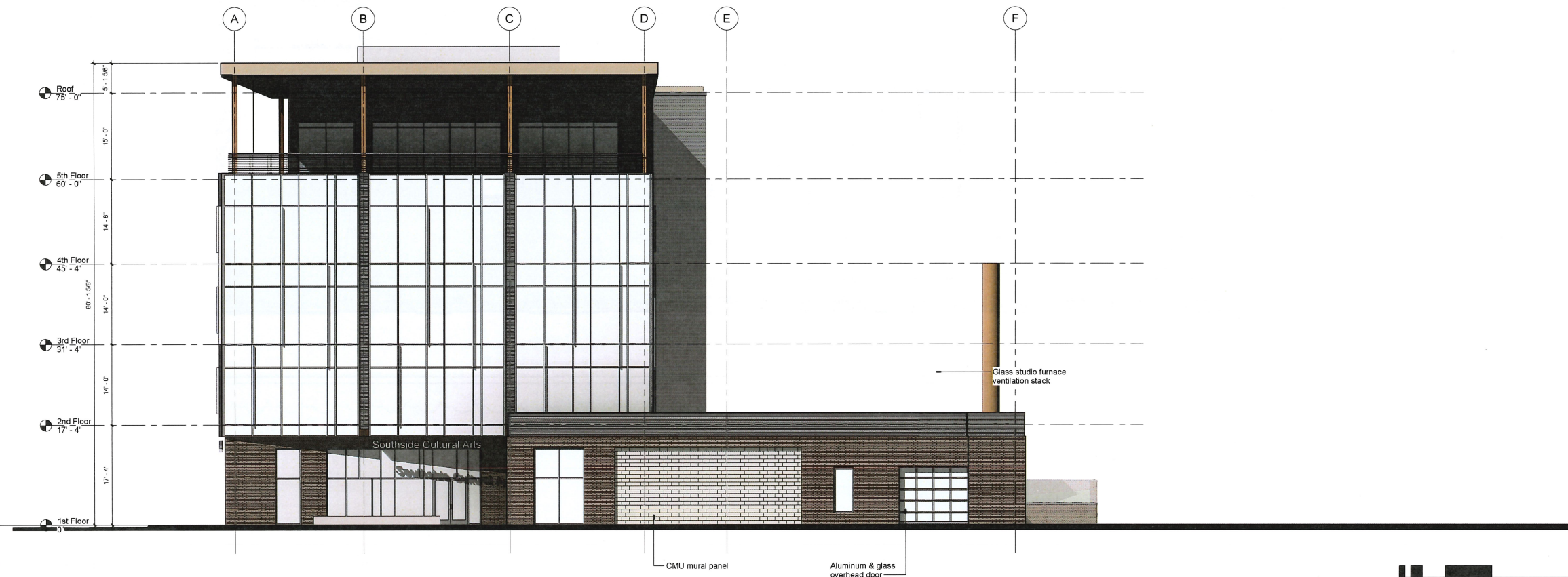
MKSD
architects

1 South Elevation
1/8" = 1'-0"

NOTE: All notes on this elevation are typical for all building elevations.



2 East Elevation
1/8" = 1'-0"



1 North Elevation
1/8" = 1'-0"



2 West Elevation
1/8" = 1'-0"

