

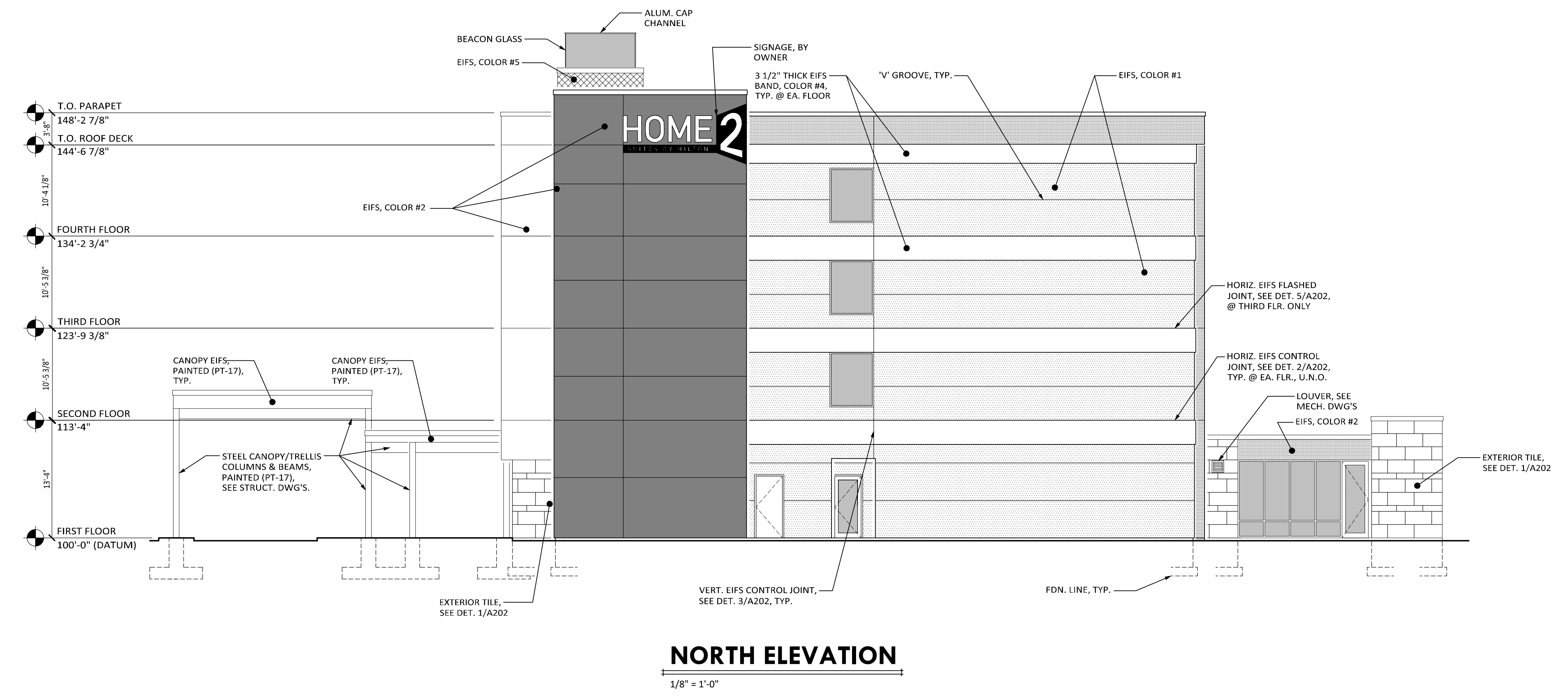
Revisions:

No:	Date:
No:	Date:
No:	Date:
No:	Date:
No:	Date:

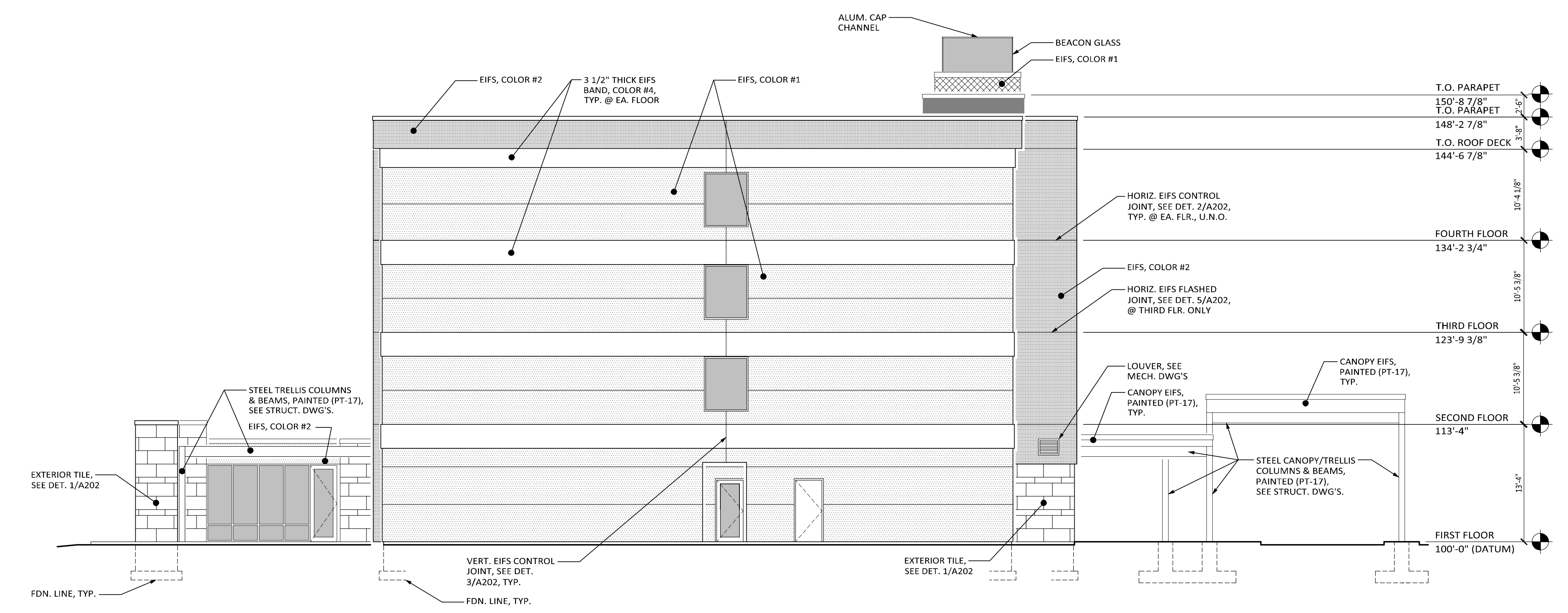
EIFS COLOR SCHEDULE		
SYM.	EIFS COLOR	TEXTURE
1	AC-22 NANTUCKET FOG	QUARTZPUTZ W/ HYDROPHOBIC FINISH
2	HC-77 ALEXANDER BEIGE	SAND PEBBLE W/ HYDROPHOBIC FINISH
3	HC-70 VAN BUREN BROWN	SAND PEBBLE W/ HYDROPHOBIC FINISH
4	OC-28 COLLINGWOOD	SAND PEBBLE W/ HYDROPHOBIC FINISH
5	398 FLOWER POWER	SAND PEBBLE W/ HYDROPHOBIC FINISH
6	OC-17 WHITE DOVE	SAND PEBBLE W/ HYDROPHOBIC FINISH

SCHEDULE NOTES:

- ALL EIFS IS 1 1/2" THICK, TYP. (U.N.O.) ON ELEVATIONS OR WALL SECTIONS
- ALL EIFS COLORS ARE FROM BENJAMIN MOORE, U.N.O.
- ALL EIFS TEXTURES ARE FROM DRYVIT, U.N.O.
- USE HIGH IMPACT EIFS FROM GRADE TO 11'-0" A.F.F.
- ALL LOUVERS, VENTS, GRILLS, AND FASCIAS ARE TO BE PAINTED/PREFINISHED TO MATCH ADJACENT EIFS COLOR



NORTH ELEVATION
 1/8" = 1'-0"



SOUTH ELEVATION
 1/8" = 1'-0"