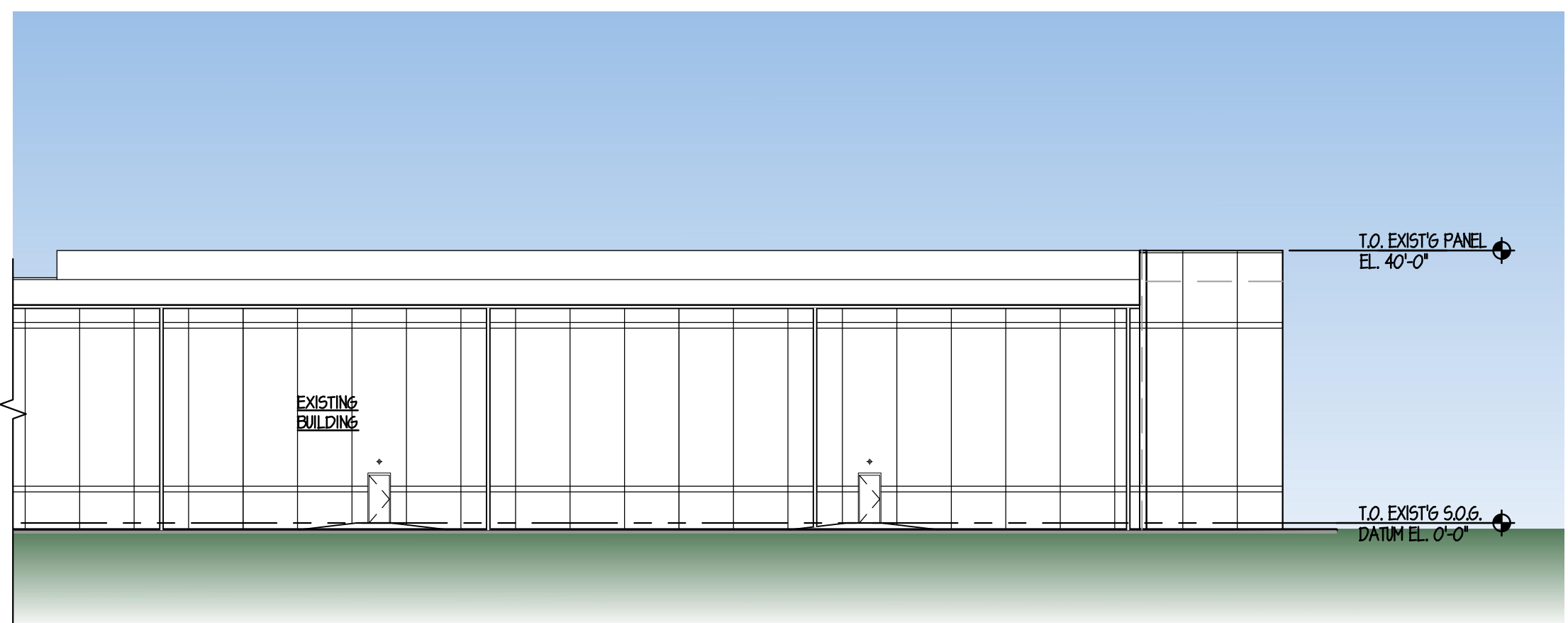
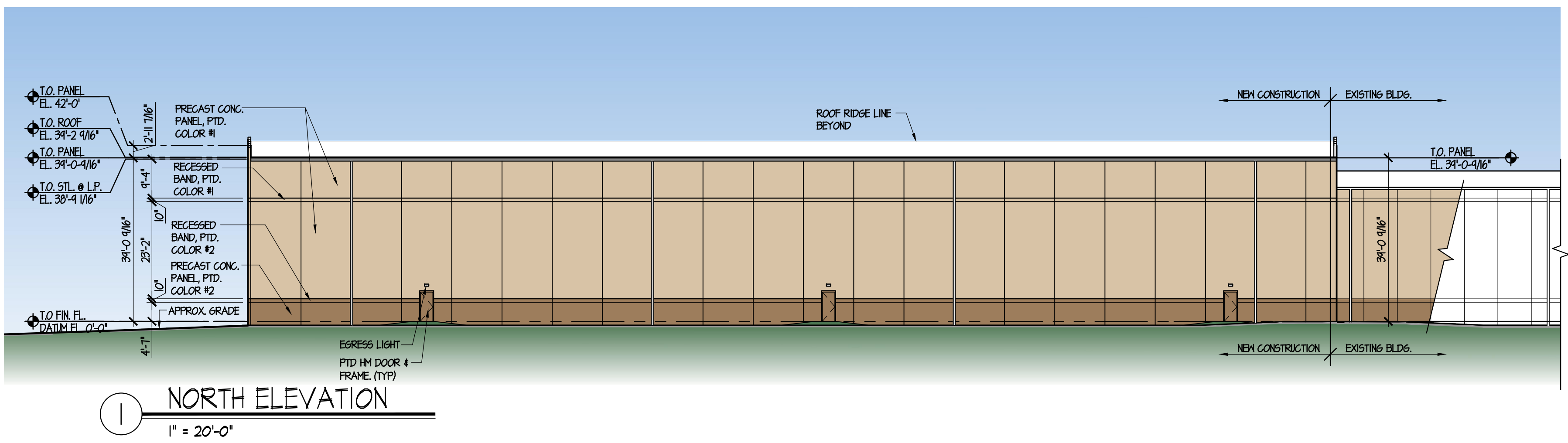


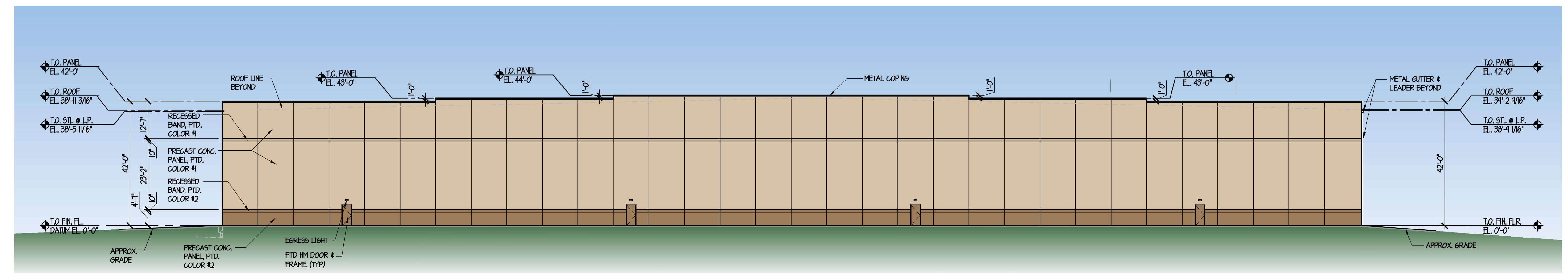
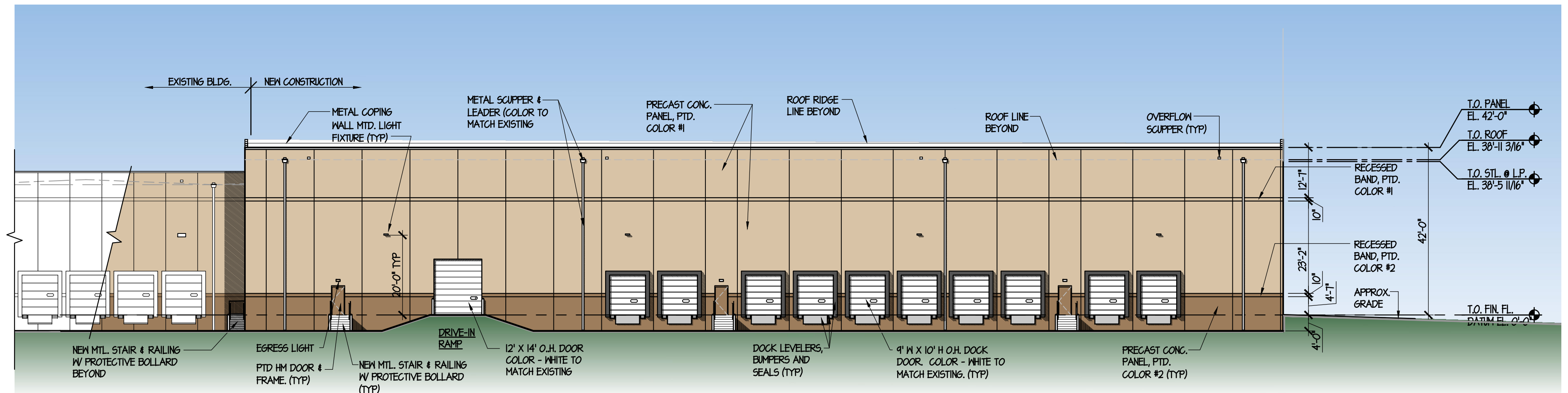
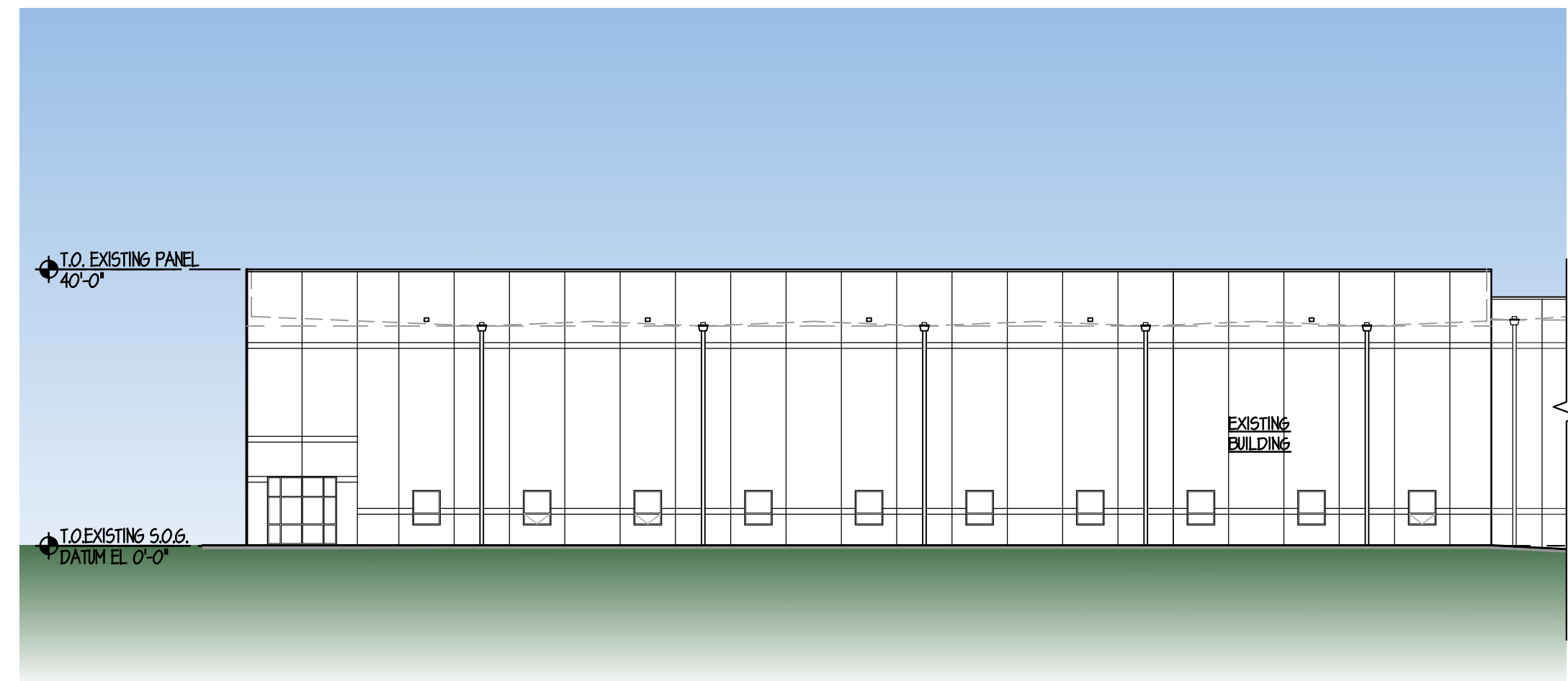
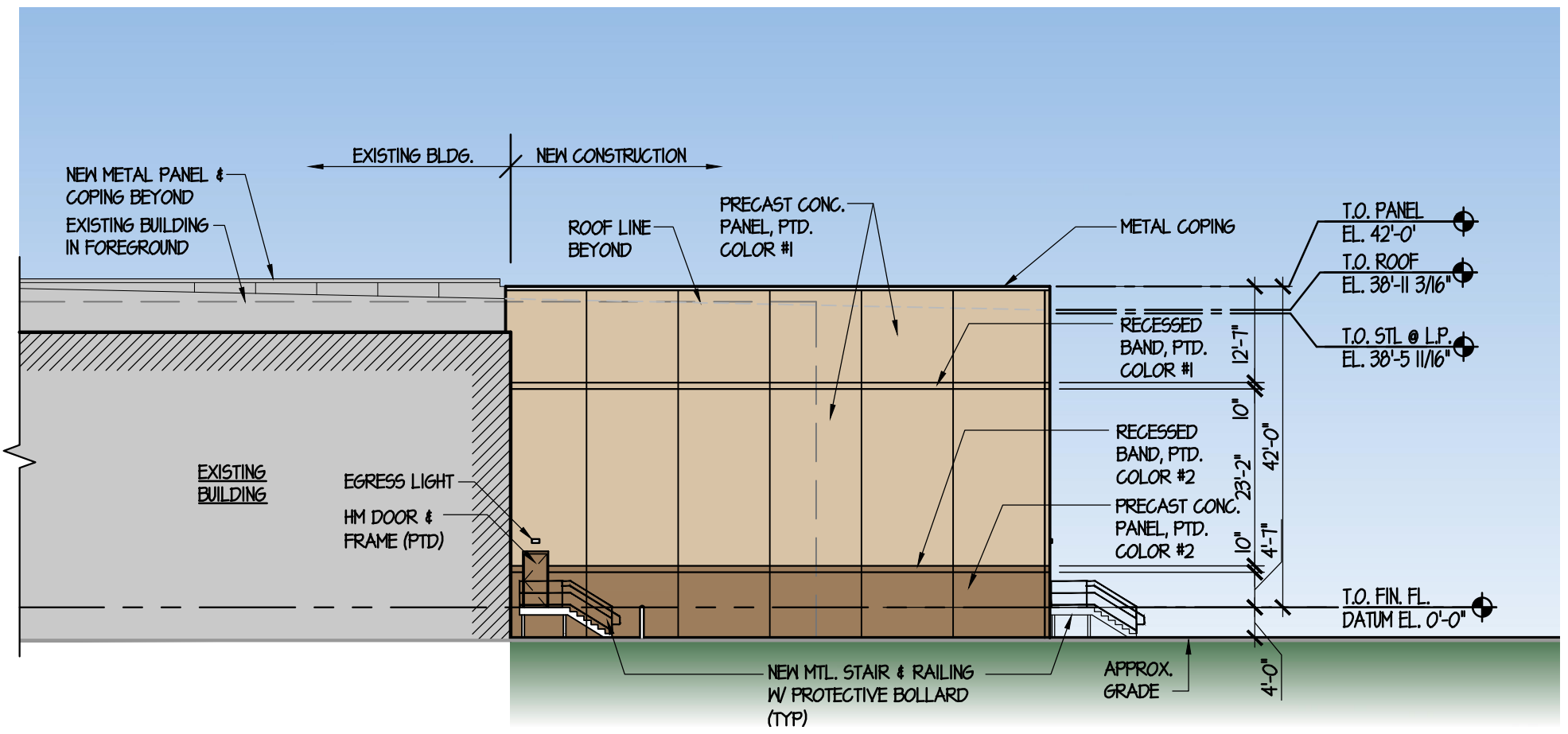
REVISIONS

REV#	DATE	DESCRIPTION
01	08 JAN 21	FOR MUNICIPAL & LVP APPROVAL

This drawing and all information contained herein is authorized for use only by the party for whom the work was contracted or to whom it is certified. This drawing may not be copied, revised, disclosed, distributed or relied upon for any other purpose without the written consent of Cermignara Architect. Copyright 2021, Cermignara Architect All Rights Reserved.



EXTERIOR MATERIALS & COLORS		
DESCRIPTION	MANUFACTURER	COLOR
PAINT COLOR #1	BENJAMIN MOORE	1054 SHERWOOD TAN (MATCH EXISTING)
PAINT COLOR #2	BENJAMIN MOORE	1056 EDENWOOD ROCKS (MATCH EXISTING)
METAL PANELS	METLSPAN	DESERT BEIGE
ALUM. STOREFRONT	KANNEER	BRONZE ANODIZED
GLASS	-	CLEAR
METAL COPING GUTTERS & LEADERS	-	MATCH EXISTING



224 COURTYARD DRIVE
HILLSBOROUGH, NJ 08844
PHONE 908.685.7700 | FAX 908.3019
WWW.CERMIGNARAARCHITECT.COM

CARMINE CERMIGNARA, AIA
C.7461
RA.0159448

CIGARS INTERNATIONAL BLDG. EXPANSION

CIGARS INTERNATIONAL, INC.
1411 SPILLMAN DRIVE - LOT 15
BETHLEHEM, PA 18015

RENDERED BUILDING ELEVATIONS
SCALE AS NOTED

DATE 08 JAN 21 COMMISSION 12034.04
DRAWN BY JN REVISION
CHECKED BY BTC
SHEET DRAWING