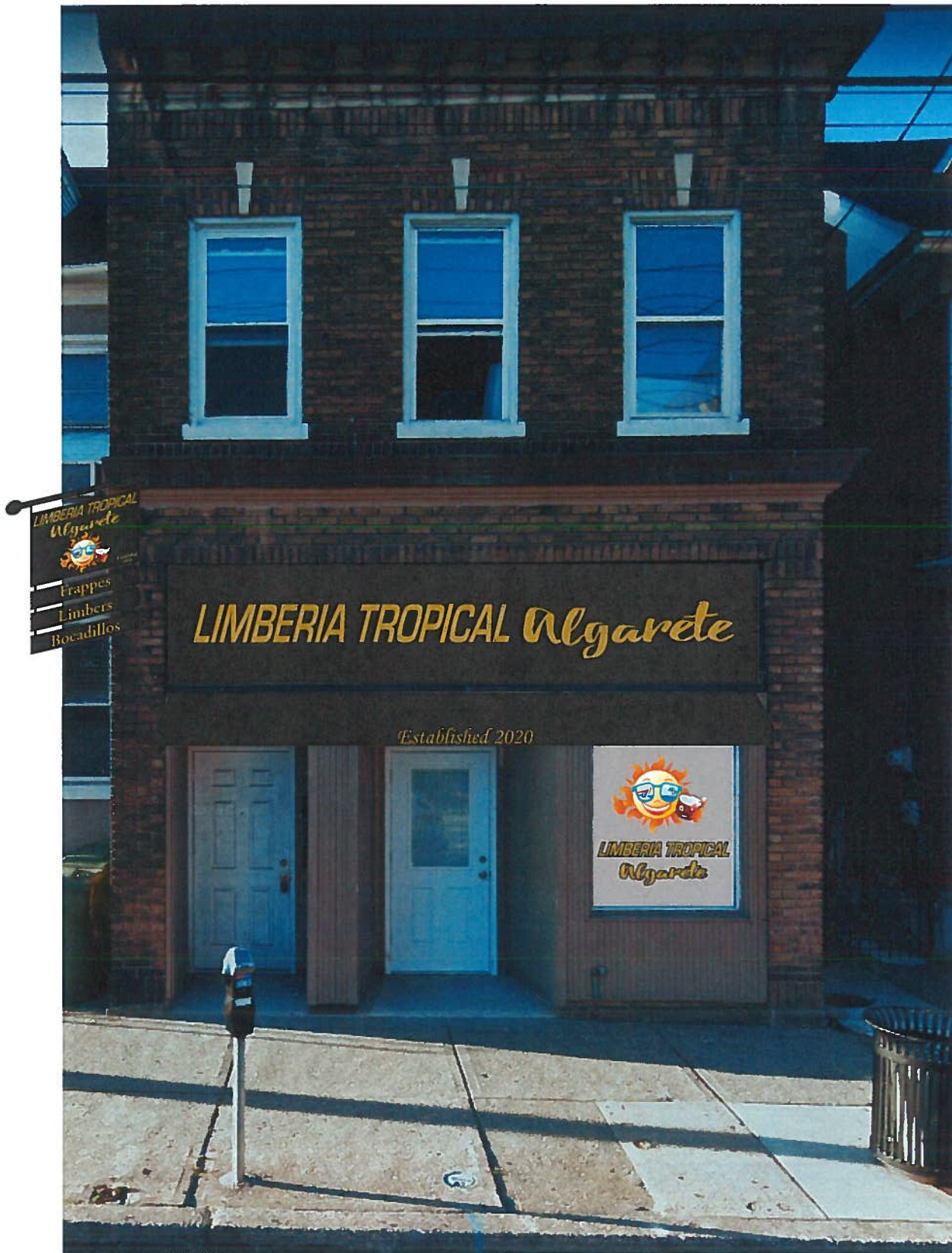




530 east 4th st



hanging sign



**PROPOSED WINDOW LETTERING OPAQUE PRINTED VINYL 38" X 42"**

**HANGING SIGN PRE-PAINTED ALUMINUM PANELS, 24" X 36" AND 3 THAT ARE 6" X 36"**

**SUNBRELLA FABRIC AWNING 24" projection, 24" high, x 190" wide in black**

**with a rigid valance at bottom 6" tall x 190" wide with Established 2020 in gold lettering**

**ALUMINUM WALL SIGN 38" x 190"**