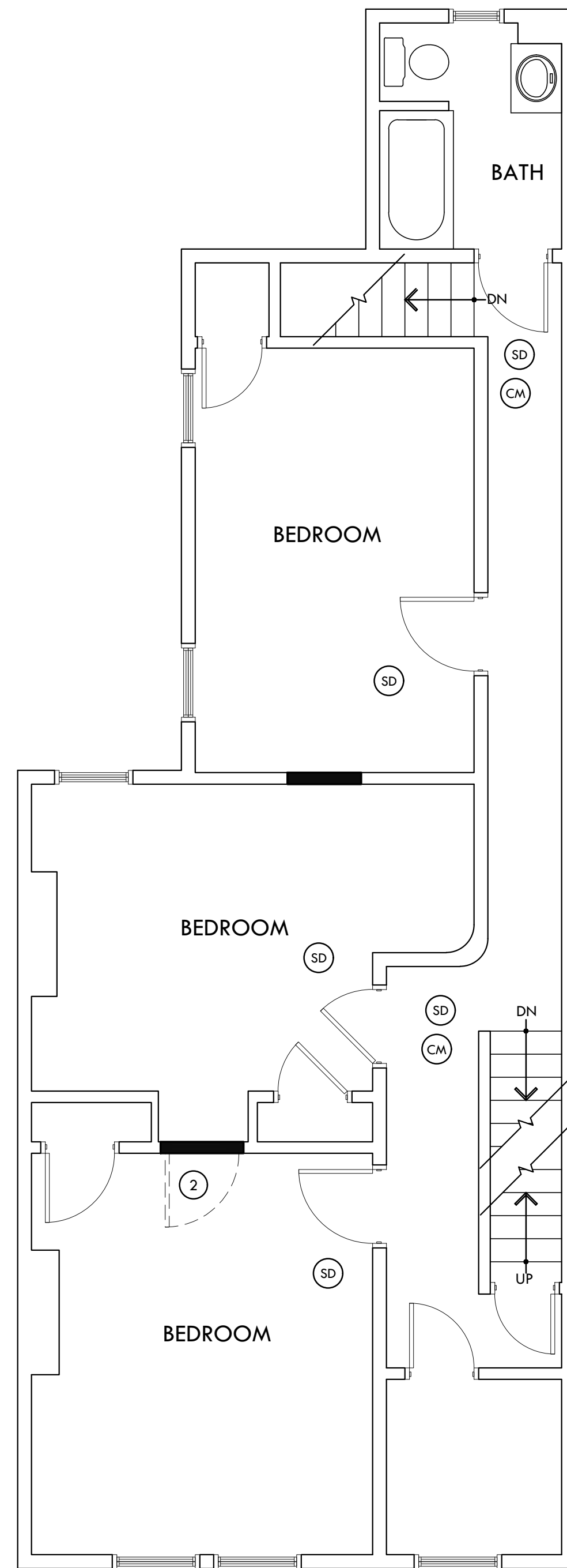


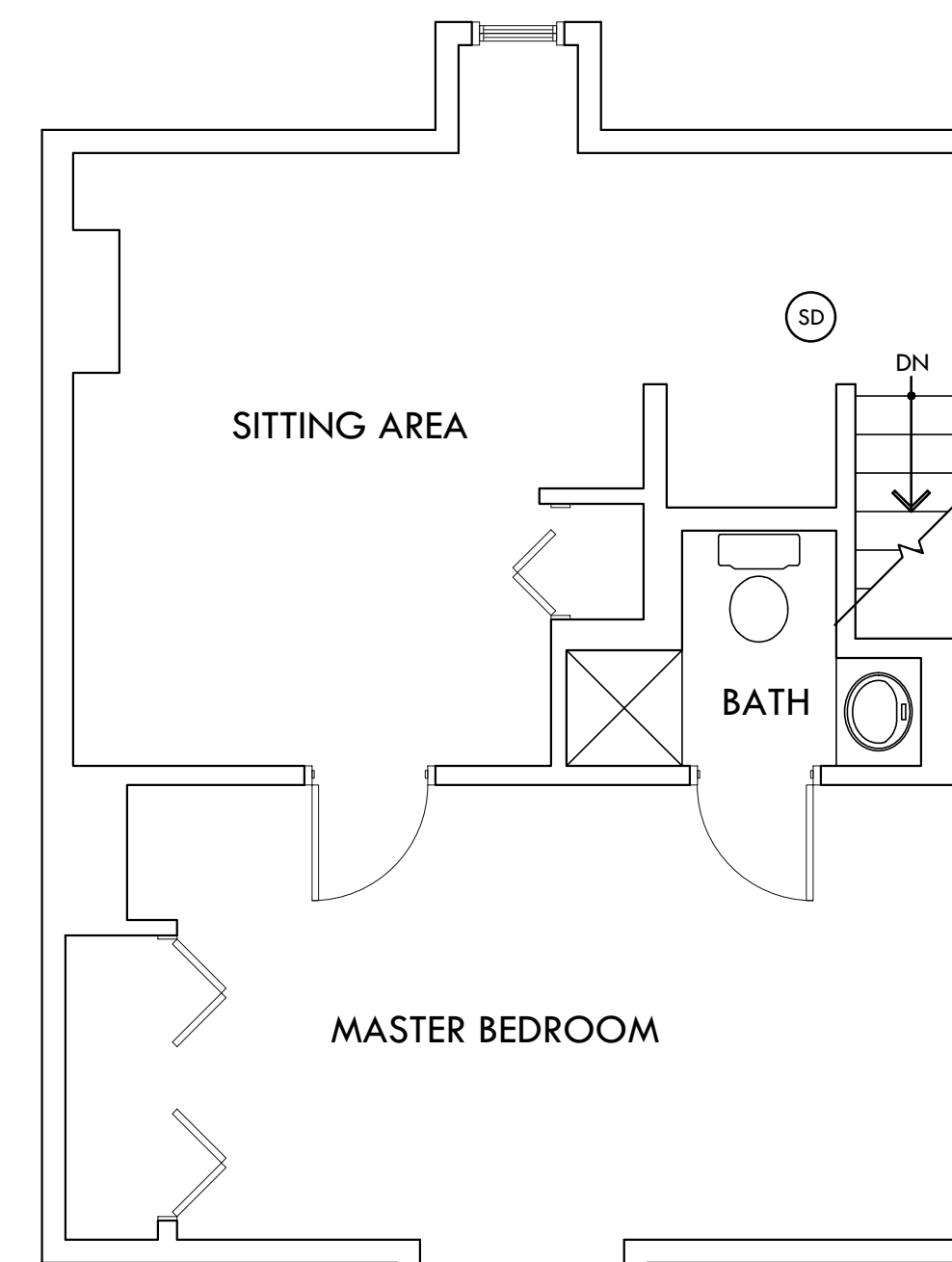
NEW FIRST FLOOR PLAN
SCALE: 1/4" = 1' - 0"



EXISTING SECOND FLOOR PLAN
SCALE: 1/4" = 1' - 0"

FLOOR PLAN KEYED NOTES

- ① EXISTING WALL TO BE REMOVED IN ITS ENTIRETY, PATCH AND REPAIR AS REQUIRED TO RECEIVE NEW FINISH.
- ② REMOVE EXISTING DOOR IN ITS ENTIRETY, PATCH AND REPAIR AS REQUIRED TO RECEIVE NEW INFILL FINISH.



EXISTING THIRD FLOOR PLAN
SCALE: 1/4" = 1' - 0"

NO.	REVISION	DATE

PROPOSED
**SINGLE FAMILY
INTERIOR ALTERATIONS**
315 WEST BROAD STREET
BETHLEHEM, PA 18018

DATE ISSUED
JULY 31, 2020
DESIGNED BY
TZS
DRAWN BY
TZS
DRAWING TITLE
ARCHITECTURAL
NEW FLOOR PLANS
DRAWING NUMBER