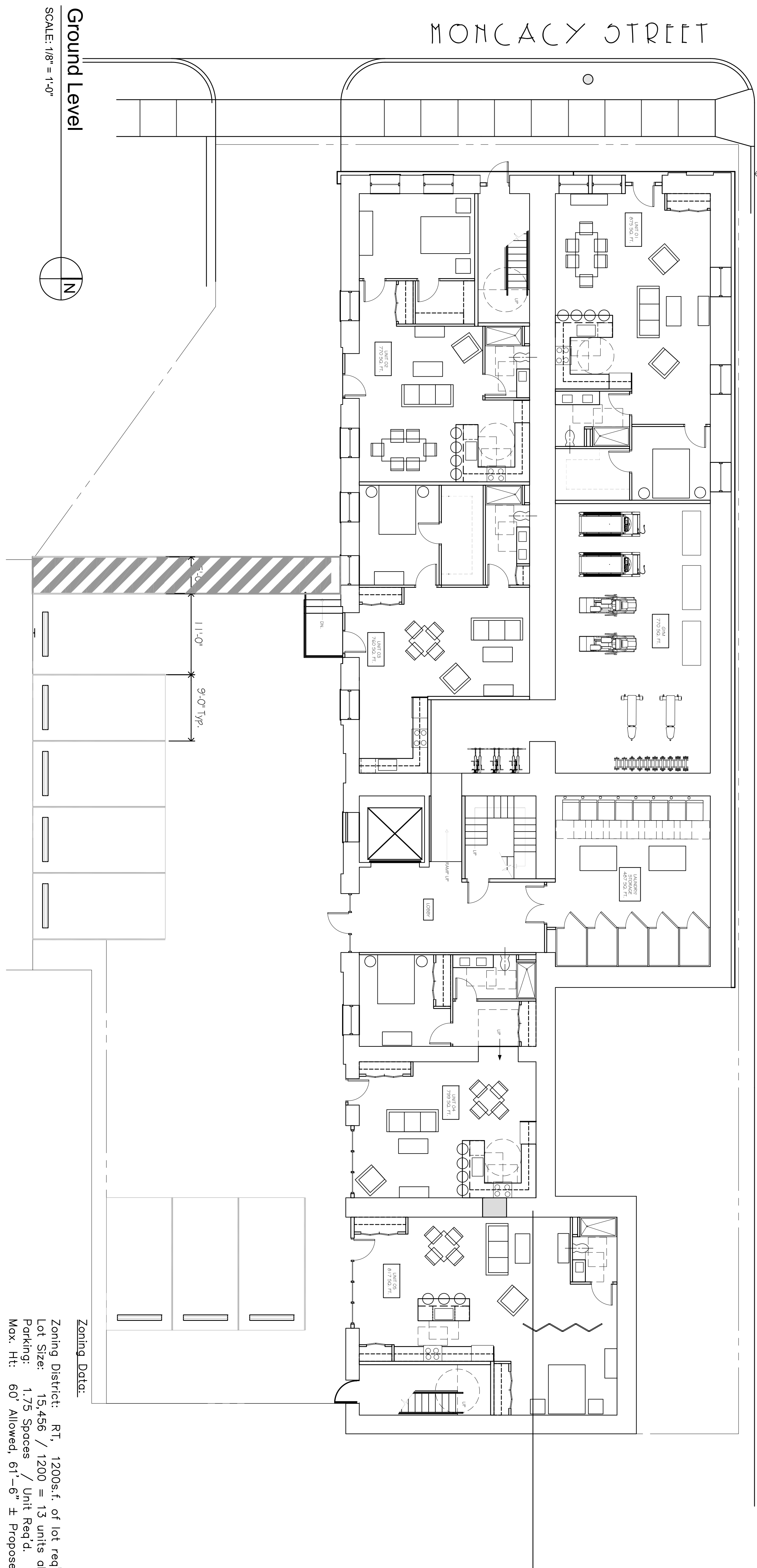




MONOCACY STREET

SPRUCE STREET



Zoning Data:

Zoning District: RT, 1200s.f. of lot req'd per unit  
 Lot Size: 15,456 / 1200 = 13 units allowed, 33 Units Proposed  
 Parking: 1.75 Spaces / Unit Req'd. 32x1.75 = 56 Req'd, 9+ Provided  
 Max. Ht: 60' Allowed, 61'-6" ± Proposed

PROJECT NUMBERS

DRAWN BY: CNICDL  
 CHECKED BY: CU

DATE: 01.30.20  
 REVISION DATE: 02.25.20

NOT FOR CONSTRUCTION

GROUND LEVEL PLAN

ADDITIONS & ALTERATIONS TO:  
**MILLER COMPANY**

810 MONOCACY ST.  
 BETHLEHEM PA 18018

Architecture |  
 Sustainable Design |  
 Preservation and Planning |

www.artifactarchitecture.com  
 Christine Ussler, AIA  
 200 North 10th Street  
 Bethlehem, PA 18015  
 610.861.0235 phone  
 610.861.0275 fax