

PENNSYLVANIA STATE ETHICS COMMISSION

THE ETHICS ACT

A Short Guide On How To Stay
Out of the Newspapers (and jail)



DO YOU TRUST YOUR
GOVERNMENT?

CORE MISSION

The Pennsylvania State Ethics Commission's core mission and guiding principle is that public office is a public trust and that any effort to realize personal financial gain through one's public office is a violation of that trust.

STATE ETHICS COMMISSION

JURISDICTION

➤ PUBLIC OFFICIALS

Any person elected by the public or elected or appointed by a governmental body or an appointed official in the executive, legislative or judicial branch of this Commonwealth or any political subdivision thereof.

➤ PUBLIC EMPLOYEES

Any individual employed by the Commonwealth or a political subdivision who is responsible for taking or recommending official action of a nonministerial nature with regard to:

- contracting or procurement;
- administering or monitoring grants or subsidies;
- planning or zoning
- inspecting, licensing, regulating or auditing any person; or
- any other activity where the official action has an economic impact of greater than a de minimis nature on the interests of any person.

THREE PRIMARY FUNCTIONS



INVESTIGATIONS



ADVICES AND OPINIONS

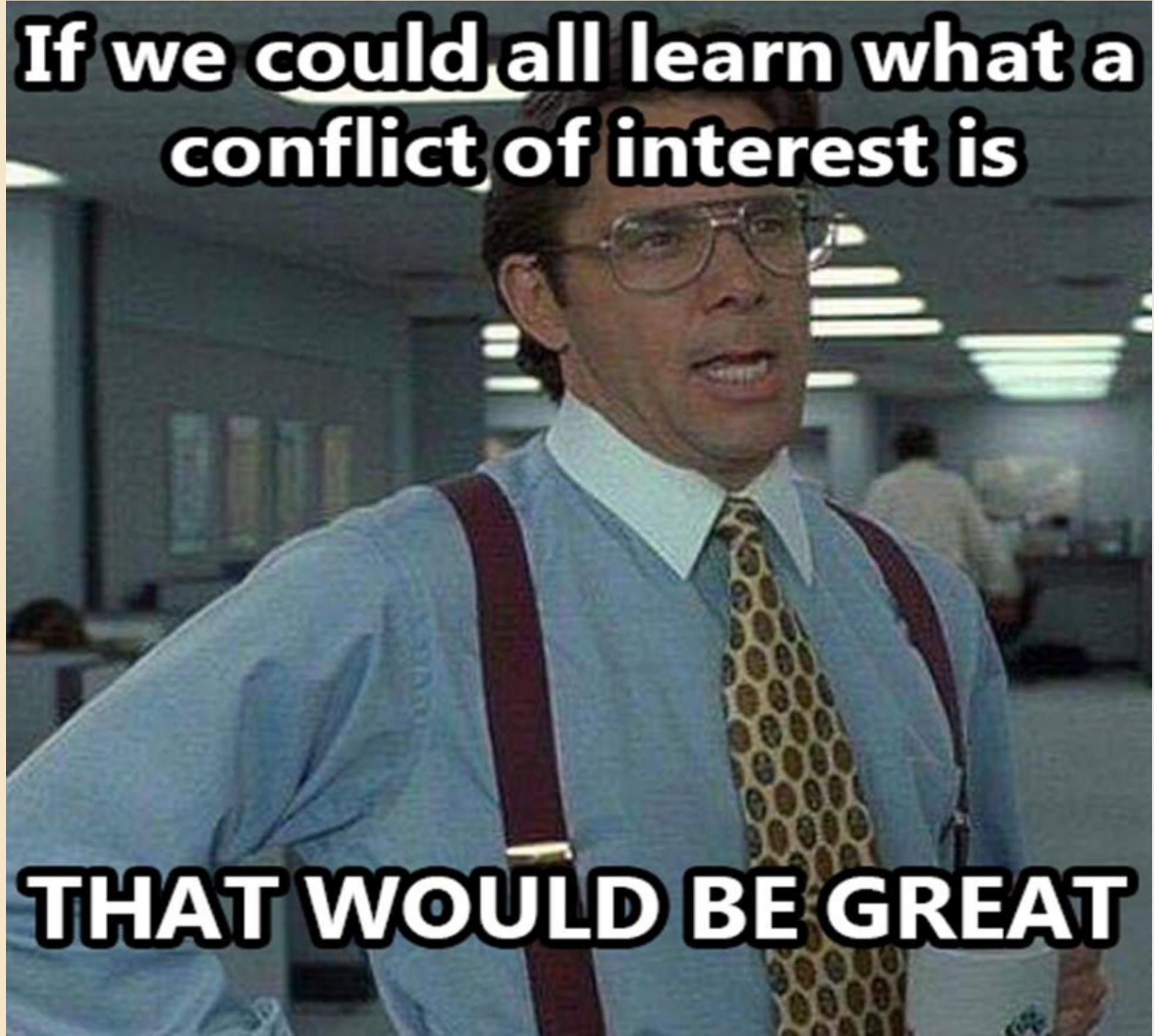


STATEMENTS OF
FINANCIAL INTERESTS

Restricted Activities



**If we could all learn what a
conflict of interest is**



THAT WOULD BE GREAT

Conflict of Interest: 1103(a)

No public official or public employee shall engage in conduct that constitutes a conflict of interest.

**Use of
Authority of
Office or
Confidential
Information**

**For the
private
pecuniary
benefit of**

**Themselves,
a member of
their
immediate
family, or a
business
with which
they are
associated.**

Profit?

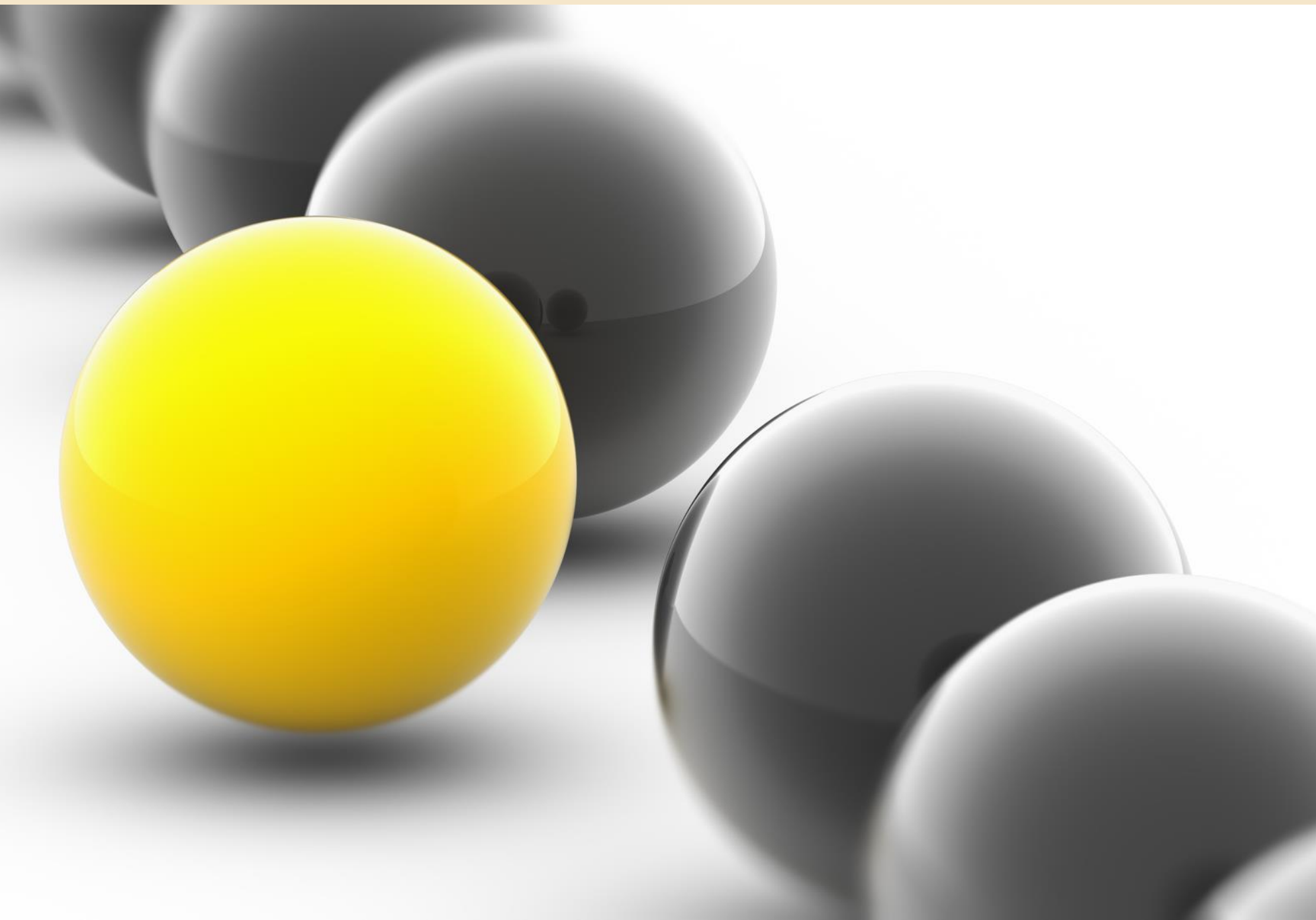


Exceptions

**Actions having a de minimis
economic impact**

**Affects to the same degree a
class consisting of the general
public**

**Subclass consisting of an
industry, occupation, or other
group**





PLCB BOURBON LOTTERY

PLCB Member and Employees used confidential information to purchase highly sought-after bottles of bourbon left over from a public lottery.

No private pecuniary benefit, so no Ethics Act violation.

Nepotism

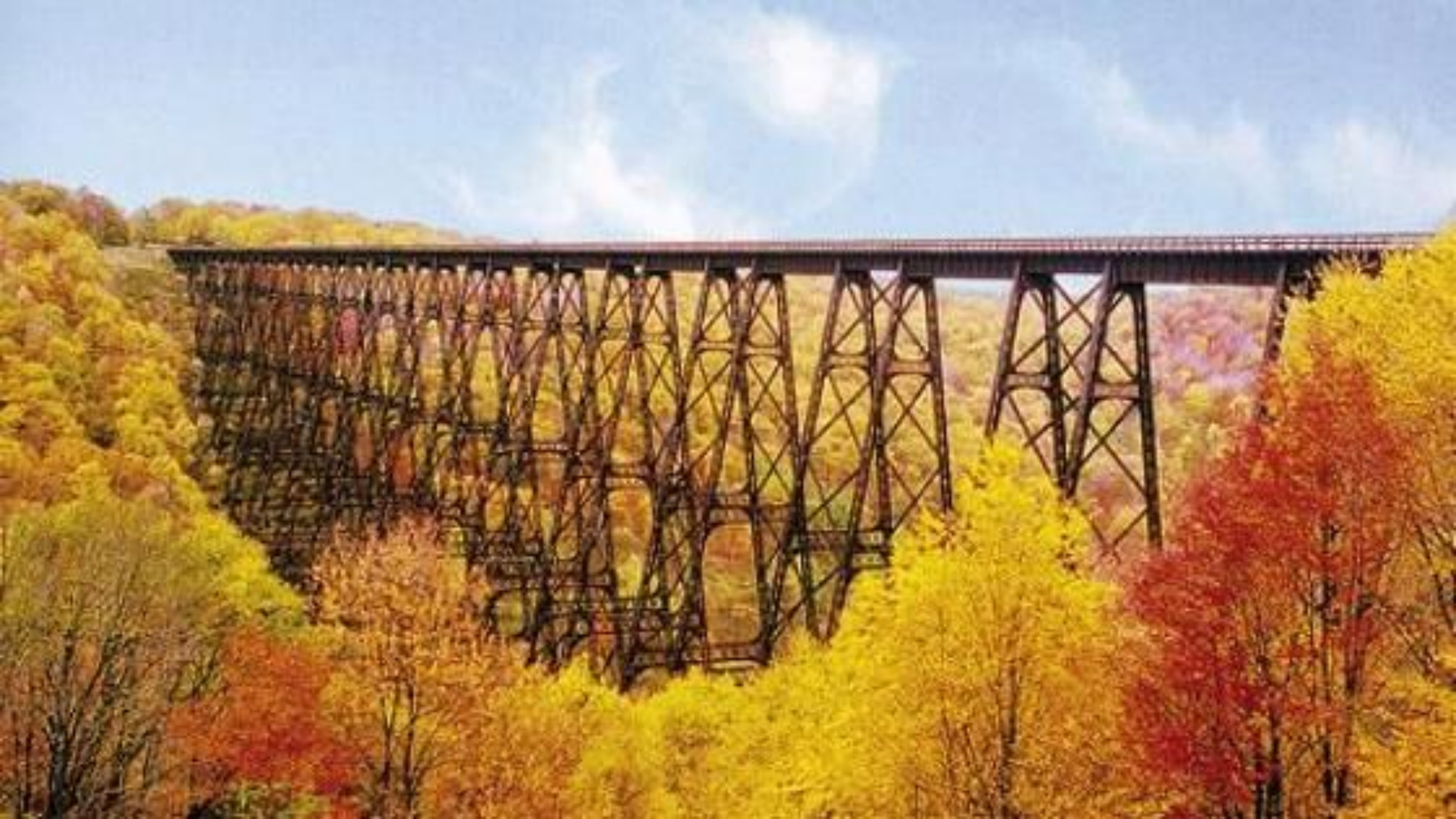
When can a family member work at the same governmental entity?



USE OF GOVERNMENT ASSETS



GIFTS, TRAVEL,
LODGING,
HOSPITALITY

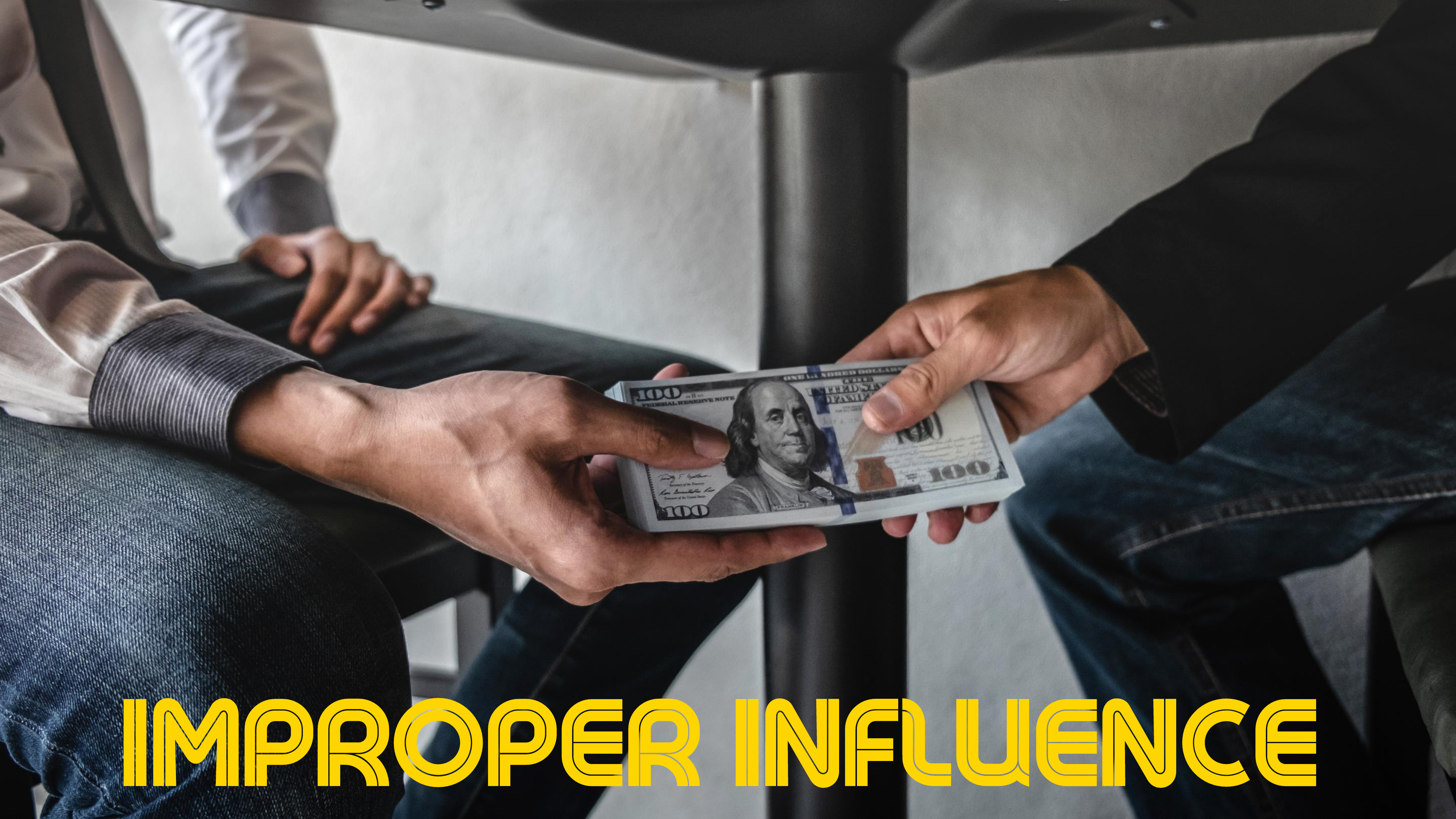




If you have a conflict:



AND publicly announce and disclose nature of your interest in a written memo with the person recording the meeting minutes.



IMPROPER INFLUENCE

Honorarium - 1103(d)

ARE PROHIBITED

Payment made in
recognition of public
works/appearances

Not intended as
compensation

Nonpublic
Occupational or
Professional in
Nature

Revolving Door: 1103(g)

No former public official or public employee shall

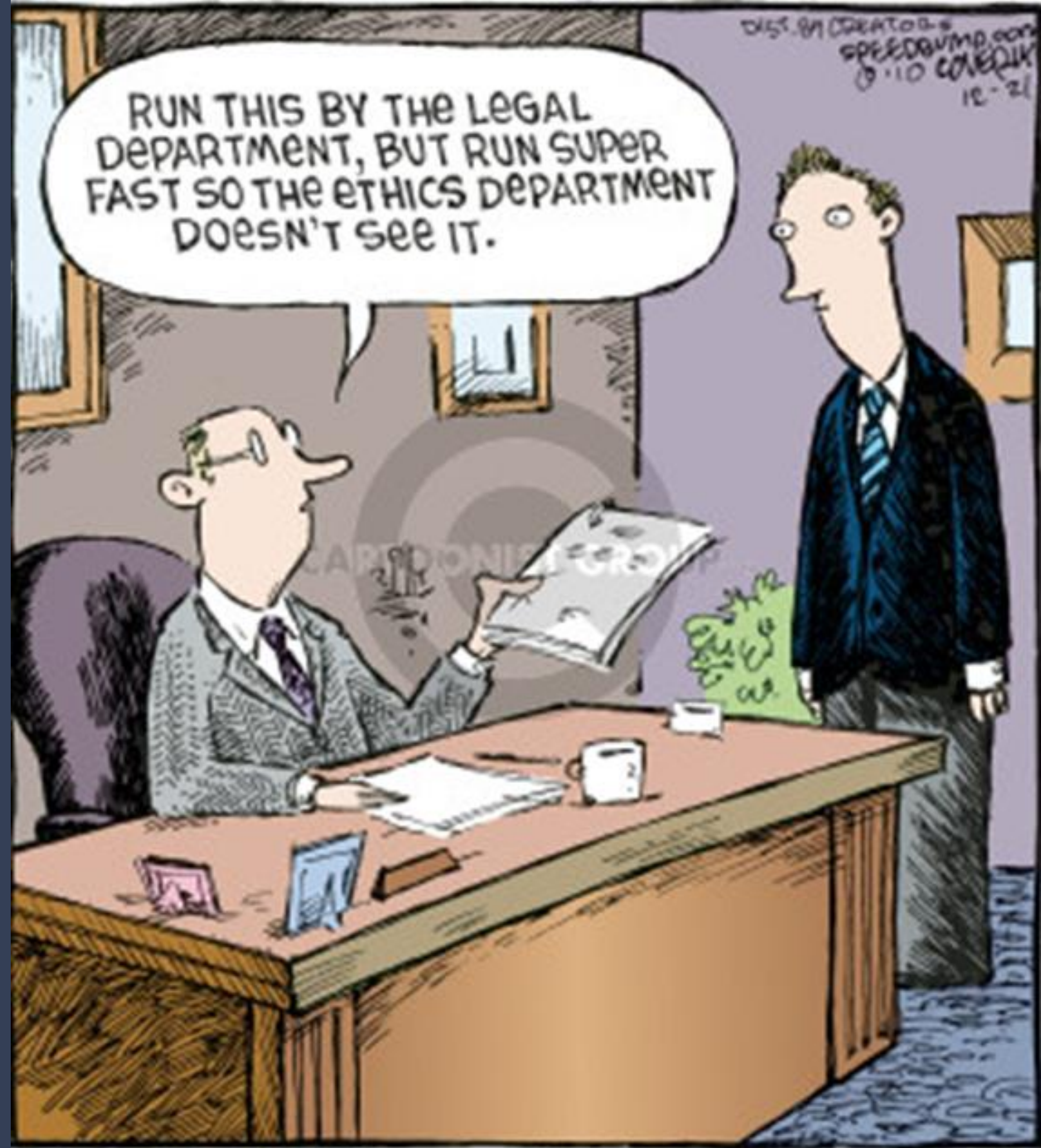
Represent a
"person"

For promised or
actual
compensation

Before their
former
governmental
body

For one
year after
leaving.

Advices and Opinions



WHAT IS AN ADVICE?

The Commission provides advice and guidance regarding the duties of those who are subject to the Ethics Act



Such advice and guidance is in the form of Advices of Counsel and Opinions of the Commission

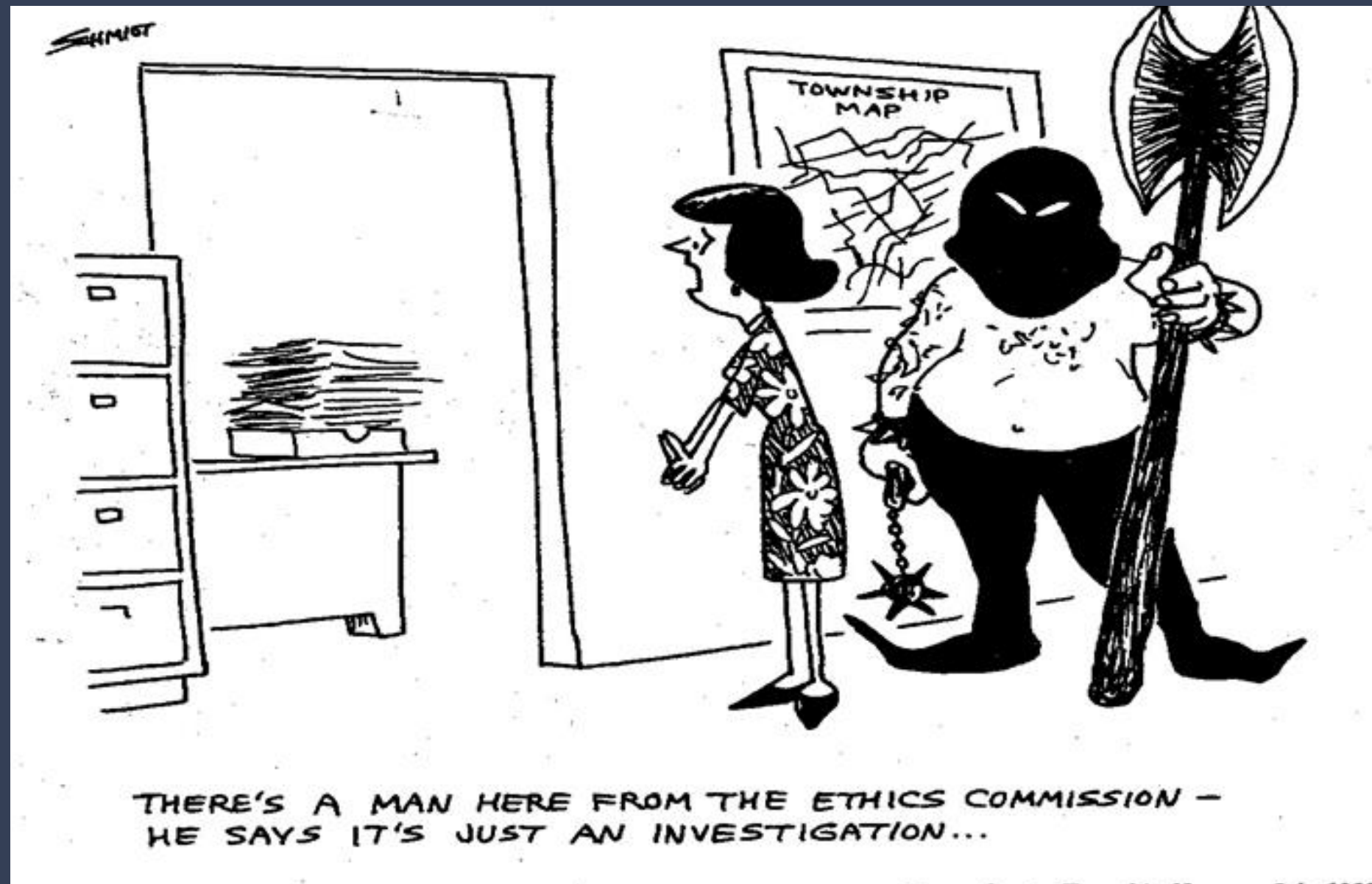
PROSPECTIVE



NOT PROSPECTIVE



Investigations



Proceedings and records relating to an investigation are confidential

Identity of a complainant is confidential

Final Order is a public record

PENALTIES

➤ ADMINISTRATIVE

Public Order
Restitution
Treble penalties

➤ CRIMINAL

Misdemeanor/Felony
Up to \$10K fine
Up to 5 years prison

➤ SFI

Up to \$250 per form

STATE OF CALIFORNIA
DEPARTMENT OF REVENUE
INCOME TAX RETURN
INTERESTS

1. LAST NAME: MAHABD FIRST NAME: DAANE SSN: 17

2. STREET ADDRESS: 2600 Agate St #109 CITY: San Jose STATE: CA ZIP: 95128

3. STATUS: CONSUMED SERVICE

4. PUBLIC SERVICE OR PUBLIC OFFICE: POLICY ANALYST II

5. PUBLIC UTILITY COMMISSION: GLAD TO BE GONE

6. DISPOSITION OF INCOME: NONE

7. OFFICE EMPLOYMENT: PROFESSOR IN HAIR

8. BUSINESS OR PROFESSION: PROFESSOR IN HAIR

9. SIGNATURE: Buana Mahab

10. DATE: 17/15

11. STATE: CA

12. COUNTY: San Jose

13. ZIP: 95128

14. TAXPAYER'S SOCIAL SECURITY NUMBER: 17

15. TAXPAYER'S IDENTIFICATION NUMBER: 17

16. TAXPAYER'S FILING STATUS: CONSUMED SERVICE

17. TAXPAYER'S RESIDENCE: 2600 Agate St #109

18. TAXPAYER'S EMPLOYER: POLICY ANALYST II

19. TAXPAYER'S BUSINESS OR PROFESSION: PROFESSOR IN HAIR

20. TAXPAYER'S SOURCE OF INCOME: PROFESSOR IN HAIR

21. TAXPAYER'S SOURCE OF INCOME: PROFESSOR IN HAIR

22. TAXPAYER'S SOURCE OF INCOME: PROFESSOR IN HAIR

23. TAXPAYER'S SOURCE OF INCOME: PROFESSOR IN HAIR

24. TAXPAYER'S SOURCE OF INCOME: PROFESSOR IN HAIR

25. TAXPAYER'S SOURCE OF INCOME: PROFESSOR IN HAIR

26. TAXPAYER'S SOURCE OF INCOME: PROFESSOR IN HAIR

27. TAXPAYER'S SOURCE OF INCOME: PROFESSOR IN HAIR

28. TAXPAYER'S SOURCE OF INCOME: PROFESSOR IN HAIR

29. TAXPAYER'S SOURCE OF INCOME: PROFESSOR IN HAIR

30. TAXPAYER'S SOURCE OF INCOME: PROFESSOR IN HAIR

31. TAXPAYER'S SOURCE OF INCOME: PROFESSOR IN HAIR

32. TAXPAYER'S SOURCE OF INCOME: PROFESSOR IN HAIR

33. TAXPAYER'S SOURCE OF INCOME: PROFESSOR IN HAIR

34. TAXPAYER'S SOURCE OF INCOME: PROFESSOR IN HAIR

35. TAXPAYER'S SOURCE OF INCOME: PROFESSOR IN HAIR

36. TAXPAYER'S SOURCE OF INCOME: PROFESSOR IN HAIR

37. TAXPAYER'S SOURCE OF INCOME: PROFESSOR IN HAIR

38. TAXPAYER'S SOURCE OF INCOME: PROFESSOR IN HAIR

39. TAXPAYER'S SOURCE OF INCOME: PROFESSOR IN HAIR

40. TAXPAYER'S SOURCE OF INCOME: PROFESSOR IN HAIR

41. TAXPAYER'S SOURCE OF INCOME: PROFESSOR IN HAIR

42. TAXPAYER'S SOURCE OF INCOME: PROFESSOR IN HAIR

43. TAXPAYER'S SOURCE OF INCOME: PROFESSOR IN HAIR

44. TAXPAYER'S SOURCE OF INCOME: PROFESSOR IN HAIR

45. TAXPAYER'S SOURCE OF INCOME: PROFESSOR IN HAIR

46. TAXPAYER'S SOURCE OF INCOME: PROFESSOR IN HAIR

47. TAXPAYER'S SOURCE OF INCOME: PROFESSOR IN HAIR

48. TAXPAYER'S SOURCE OF INCOME: PROFESSOR IN HAIR

49. TAXPAYER'S SOURCE OF INCOME: PROFESSOR IN HAIR

50. TAXPAYER'S SOURCE OF INCOME: PROFESSOR IN HAIR

51. TAXPAYER'S SOURCE OF INCOME: PROFESSOR IN HAIR

52. TAXPAYER'S SOURCE OF INCOME: PROFESSOR IN HAIR

53. TAXPAYER'S SOURCE OF INCOME: PROFESSOR IN HAIR

54. TAXPAYER'S SOURCE OF INCOME: PROFESSOR IN HAIR

55. TAXPAYER'S SOURCE OF INCOME: PROFESSOR IN HAIR

56. TAXPAYER'S SOURCE OF INCOME: PROFESSOR IN HAIR

57. TAXPAYER'S SOURCE OF INCOME: PROFESSOR IN HAIR

58. TAXPAYER'S SOURCE OF INCOME: PROFESSOR IN HAIR

59. TAXPAYER'S SOURCE OF INCOME: PROFESSOR IN HAIR

60. TAXPAYER'S SOURCE OF INCOME: PROFESSOR IN HAIR

61. TAXPAYER'S SOURCE OF INCOME: PROFESSOR IN HAIR

62. TAXPAYER'S SOURCE OF INCOME: PROFESSOR IN HAIR

63. TAXPAYER'S SOURCE OF INCOME: PROFESSOR IN HAIR

64. TAXPAYER'S SOURCE OF INCOME: PROFESSOR IN HAIR

65. TAXPAYER'S SOURCE OF INCOME: PROFESSOR IN HAIR

66. TAXPAYER'S SOURCE OF INCOME: PROFESSOR IN HAIR

67. TAXPAYER'S SOURCE OF INCOME: PROFESSOR IN HAIR

68. TAXPAYER'S SOURCE OF INCOME: PROFESSOR IN HAIR

69. TAXPAYER'S SOURCE OF INCOME: PROFESSOR IN HAIR

70. TAXPAYER'S SOURCE OF INCOME: PROFESSOR IN HAIR

71. TAXPAYER'S SOURCE OF INCOME: PROFESSOR IN HAIR

72. TAXPAYER'S SOURCE OF INCOME: PROFESSOR IN HAIR

73. TAXPAYER'S SOURCE OF INCOME: PROFESSOR IN HAIR

74. TAXPAYER'S SOURCE OF INCOME: PROFESSOR IN HAIR

75. TAXPAYER'S SOURCE OF INCOME: PROFESSOR IN HAIR

76. TAXPAYER'S SOURCE OF INCOME: PROFESSOR IN HAIR

77. TAXPAYER'S SOURCE OF INCOME: PROFESSOR IN HAIR

78. TAXPAYER'S SOURCE OF INCOME: PROFESSOR IN HAIR

79. TAXPAYER'S SOURCE OF INCOME: PROFESSOR IN HAIR

80. TAXPAYER'S SOURCE OF INCOME: PROFESSOR IN HAIR

81. TAXPAYER'S SOURCE OF INCOME: PROFESSOR IN HAIR

82. TAXPAYER'S SOURCE OF INCOME: PROFESSOR IN HAIR

83. TAXPAYER'S SOURCE OF INCOME: PROFESSOR IN HAIR

84. TAXPAYER'S SOURCE OF INCOME: PROFESSOR IN HAIR

85. TAXPAYER'S SOURCE OF INCOME: PROFESSOR IN HAIR

86. TAXPAYER'S SOURCE OF INCOME: PROFESSOR IN HAIR

87. TAXPAYER'S SOURCE OF INCOME: PROFESSOR IN HAIR

88. TAXPAYER'S SOURCE OF INCOME: PROFESSOR IN HAIR

89. TAXPAYER'S SOURCE OF INCOME: PROFESSOR IN HAIR

90. TAXPAYER'S SOURCE OF INCOME: PROFESSOR IN HAIR

91. TAXPAYER'S SOURCE OF INCOME: PROFESSOR IN HAIR

92. TAXPAYER'S SOURCE OF INCOME: PROFESSOR IN HAIR

93. TAXPAYER'S SOURCE OF INCOME: PROFESSOR IN HAIR

94. TAXPAYER'S SOURCE OF INCOME: PROFESSOR IN HAIR

95. TAXPAYER'S SOURCE OF INCOME: PROFESSOR IN HAIR

96. TAXPAYER'S SOURCE OF INCOME: PROFESSOR IN HAIR

97. TAXPAYER'S SOURCE OF INCOME: PROFESSOR IN HAIR

98. TAXPAYER'S SOURCE OF INCOME: PROFESSOR IN HAIR

99. TAXPAYER'S SOURCE OF INCOME: PROFESSOR IN HAIR

100. TAXPAYER'S SOURCE OF INCOME: PROFESSOR IN HAIR

\$!#@

\$!#@

\$!#@

\$!#@ SHOLES!

\$250.00 Civil Penalty

\$371.06 Court Costs

Found in Contempt of Court

Warrant for Arrest

SFI Shown to Whole State

PRICELESS



Questions?

Pennsylvania State Ethics Commission

www.ethics.pa.gov

717-783-1610