

**CITY OF BETHLEHEM**  
**INTER-DEPARTMENTAL CORRESPONDENCE**

**SUBJECT:** Request for Approval by City Council of Contract Award or Contract Price Increase Pursuant to City Ordinance, Article 121.05 (a)

Project or Contract Reference: South Bethlehem Corridor Connections – Construction Inspection Services

**TO:** City Council, all members, and Council Solicitor  
**FROM:** Michael Alkhal, P.E. – Director of Public Works  
**DATE:** October 28, 2020

---

On behalf of the Administration, pursuant to City Ordinances, Article 121.05, I request City Council's approval of the following recommendation of the referenced contract award or price increase.

- Check Type of Contract or Change:

The contract is for over \$50,000 and required to be bid under the Third Class City Code. We have advertised the above referenced project and received qualified bids. We recommend award of the contract to the bidder identified and for the reasons stated below.

The recommendation is for a price increase of 10% or more for an existing contract over \$50,000 that was previously bid and awarded under the Third Class City Code.

The contract is for the engagement of professional services. We have received a proposal for professional services in connection with above referenced project. We recommend award of the contract to:

- Is the contract appropriation or price increase included in this year's budget?  yes  no
- Identify contract funding sources (general fund, grants, loans, etc.....):

TASA Grant – Reimbursement Agreement with PennDOT, Agreement No. R19050008

- The name and address of the recommended Professional Service Provider are:

Traffic Planning and Design, Inc.  
1720 Spillman Drive  
Suite 260  
Bethlehem, PA 18015

- 
- Term of contract or estimated completion date, subject to standard extensions:

6 months from the date of the Notice to Proceed.

- Description of project or scope of services to be provided:

The consultant is to provide construction inspection services over the course of construction of the pedestrian improvements for the South Bethlehem Corridor Connections project. The consultant will utilize the PennDOT ECMS system for managing the project. The consultant will review all pay applications being made by the contractor and verify that all work is in compliance with the plans and specifications prior to approval of payments.

- State the actual or estimated price to the City or the proposed Department budget allowance for the initial term; and state payment rate per unit of service if applicable:

\$55,122.96

- Number of renewal term options and duration of each renewal, if any: N/A
- Maximum dollar value of all renewals provided for beyond the original term as if all renewals were exercised: N/A
- Reasons for recommendation of Administration and Council approval of contract:

As required by the TASA grant, PennDOT requires that the City hire a consultant inspection firm for this project. In accordance with PennDOT procedures, requests for Construction Inspection services were sent out to six (6) engineering consultant firms and Statements of Interest (SOI) were received on 9/18/2020 from 2 firms. We reviewed and evaluated the SOI and ranked the firms. Based on the ranking it was determined that Traffic, Planning, and Design, Inc.(TPD) was the most responsive firm with the necessary experience and staffing to perform the tasks required. An Engineering Contract was entered in ECMS and a technical proposal and pricing was submitted by TPD through the ECMS system.

Please approve this recommendation by passing the accompanying resolution. A vote of final approval is requested at the first City Council agenda listing of this matter.

---



Department Head

Copies To: Mayor  
Director of Administration  
Director of Budget and Finance  
Law Bureau  
Purchasing Bureau  
Controller  
Project Manager

Attachment: proposed resolution

RESOLUTION NO. \_\_\_\_\_

Authorization for Contract or Amendment under Article 121.05(a)

BE IT RESOLVED by the Council of the City of Bethlehem that the Mayor and the Controller and/or such other City officials as deemed appropriate by the City Solicitor, are hereby authorized to execute a Contract or Amendment and such other agreements and documents as are deemed by the City Solicitor to be necessary and/or related thereto, with the following named contractor, for the uses and purposes indicated in the supporting Recommendation of Award of Bid or Contract dated October 28, 2020.

1. Name of Contractor: Traffic, Planning, and Design, Inc.
2. Project or Contract Reference: South Bethlehem Corridor Connections

Sponsored by \_\_\_\_\_

\_\_\_\_\_

ADOPTED by Council this \_\_\_\_\_ day of \_\_\_\_\_, 20\_\_.

\_\_\_\_\_  
President of Council

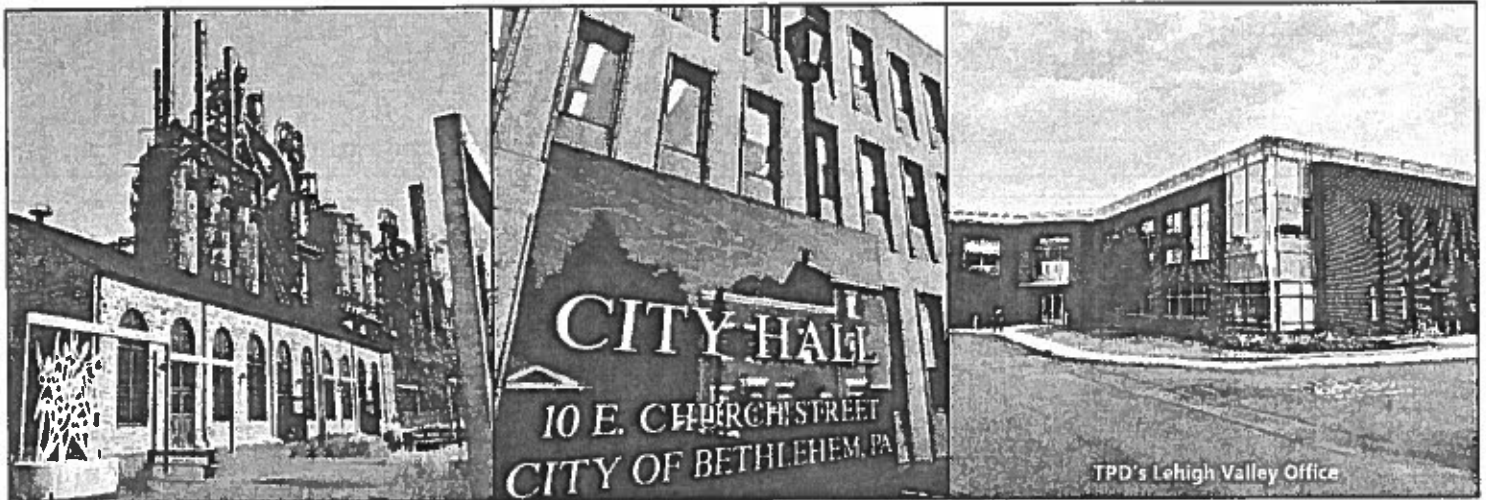
ATTEST:

\_\_\_\_\_  
City Clerk

Attention: Ms. Amy B. Rohrbach  
Project Engineer  
City of Bethlehem  
10 E Church Street  
Bethlehem, PA 18018



TRAFFIC PLANNING AND DESIGN, INC.



**Statement of Interest for Construction  
Inspection Services for the South  
Bethlehem Corridor Connections Project**

City of Bethlehem, Northampton County, PA

September 18, 2020

Firm Contact: Anthony Dougherty, PE | Firm EIN number: 23-2557966

1720 Spillman Drive, Suite 260, Bethlehem, PA 18015 | 610.625.4250 | ADougherty@TrafficPD.com



# Contents

## *Cover Letter*

1. Firm Profile
2. Statement of Interest
3. Organization Chart
4. Key Personnel Resume
5. Related Experience



TRAFFIC PLANNING AND DESIGN, INC.

---

WWW.TRAFFICPD.COM

**September 18, 2020**

Ms. Amy B. Rohrbach  
Project Engineer  
City of Bethlehem  
10 E Church Street  
Bethlehem, PA 18018

RE: Statement of Interest for  
Construction Inspection Services for the South Bethlehem Corridor Connections Project  
*City of Bethlehem, Northampton County, PA*  
TPD No. COBE.00016  
TPD Federal ID Number: 23-2557966

Dear Ms. Rohrbach:

Traffic Planning and Design, Inc. (TPD) is pleased to submit this response to your request for a Statement of Interest for Construction Inspection Services on your federally funded PennDOT Transportation Alternatives Set-Aside project, South Bethlehem Corridor Connections.

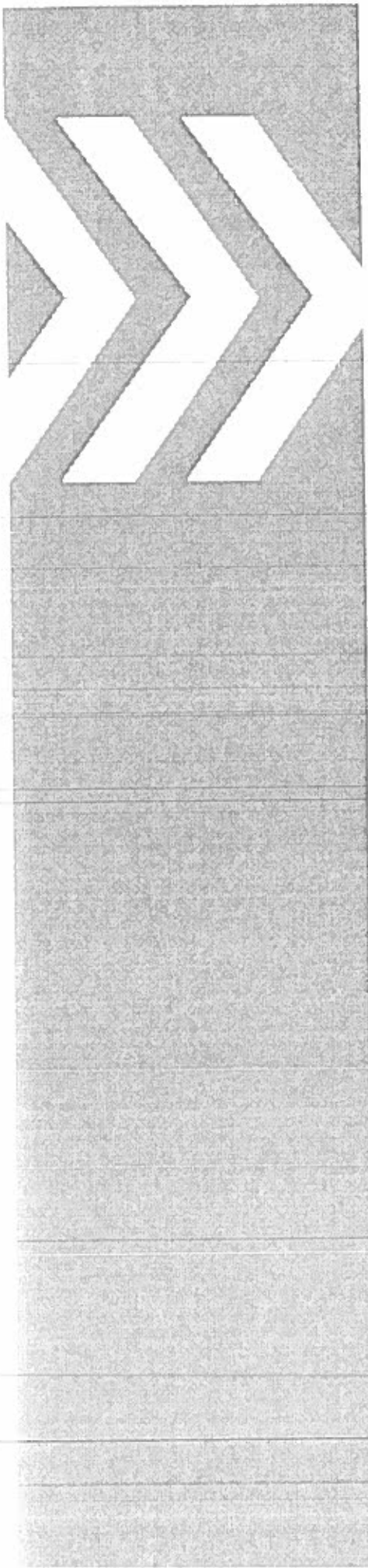
TPD has the expertise to provide the construction services required for the above-referenced project as described within this package of our qualifications.

We look forward to working with the City on this project. The TPD Team's technical expertise, proven record of performance, and engineering knowledge will allow the team to serve as a true partner with the City on this project.

Sincerely,

TRAFFIC PLANNING AND DESIGN, INC.

Anthony Dougherty, PE, TPD Agreement Project Manager  
*Vice President, Construction Services*  
ADougherty@TrafficPD.com  
610.625.4250



*Section 1*

# **Firm Profile**

# Traffic Planning and Design, Inc.

## Firm Profile

### PROFESSIONAL SERVICES

-  Transportation Planning & Permitting
-  Multimodal, Complete Streets, & Mobility Services
-  Landscape Architecture & Planning
-  Bridge Design & Inspection
-  Traffic Signal & ITS Systems Design
-  Environmental Services & Permitting
-  Construction Management & Inspection
-  Highway Design
-  Expert Witness Support for Crash Investigations

### SELECTION OF RECENT AWARDS



Founded in 1989, TPD is a multi-disciplined A/E/C firm, delivering projects throughout the eastern United States. We are a client-focused, team-oriented firm that prides itself on providing sustainable solutions for our clients and teaming partners. Working seamlessly as "One Company with Multiple Locations," TPD is able to leverage our local knowledge, continuous investment in technology, and emphasis on individual accountability to provide a high level of responsiveness and solutions appropriate for each individual project on a case-by-case basis.

We take pride in our work, as well as the "road, bridge, or trail" we've taken to get there. TPD has been recognized at both the regional and national levels for not only our engineering accomplishments, but our corporate practices and dedication to professional development. TPD is currently ranked the #4 Best Civil Engineering Firm to Work for in the Nation by the Zweig Group. Additionally, we have been recognized for our efforts in sustainability, as well as for our support of the National Guard and Military Reserve by the U.S. Government.

We also take our corporate citizenship seriously with numerous employees serving on several volunteer boards, and previously ranked as the #1 engineering firm in the Tri-State area by the Philadelphia Business Journal in terms of Corporate Philanthropy.

### LOCATIONS

**Pottstown | HQ**  
2500 East High Street, Suite 650  
Pottstown, PA 19464  
610.326.3100

**Freehold**  
4400 Route 9 South, Suite 1000  
Freehold, NJ 07728  
848.444.6105

**Bethlehem | Office Performing Work**  
1720 Spillman Drive, Suite 260  
Bethlehem, PA 18015  
610.625.4242

**Hamilton**  
100 Horizon Center Boulevard  
Hamilton, NJ 08691  
848.217.3140

**Asheville**  
80 Charlotte Street, Suite 40  
Asheville, NC 28801  
825.575.0133

**Harrisburg**  
4000 Crums Mill Road, Suite 102  
Harrisburg, PA 17112  
717.234.1430

**Doylestown**  
2003 Lower State Street, Suite 122  
Doylestown, PA 18901  
215.622.2525

**Philadelphia**  
One Penn Center @  
Suburban Station  
1617 JFK Boulevard, Suite 1230  
Philadelphia, PA 19130  
215.622.2525

**Camden**  
2 Riverside Drive, Suite 506  
Camden, NJ 08103  
856.966.4242

**Pittsburgh**  
1370 Washington Pike, Suite 515  
Bridgeville, PA 15017  
412.765.3717

**Elkton**  
111 E. Main Street, Suite A  
Elkton, MD 21921  
443.993.5791

**West Chester**  
1025 Andrew Drive, Suite 110  
West Chester, PA 19380  
610.326.3100





*Section 2*

# **Statement of Interest**

## Experience and Qualifications of Firm and Key Personnel

Traffic Planning and Design, Inc. (TPD) is pleased to offer our Team's Construction Inspection (CI) services to provide a Pennsylvania Department of Transportation Construction Inspector (TCI Classification) for the South Bethlehem Corridor Connections project located in the City of Bethlehem, Northampton County, PA. TPD understands that this project includes the repair and installation of sidewalk and curbs, handicapped ramps, enhanced crosswalks, and pedestrian and bicycle lighting on various streets in the City's Southside. The local streets include Buchanan Street, Pierce Street, Fillmore Street, and Polk Street. In addition, TPD also understands that the project will provide enhanced crosswalks at three (3) primary intersections (3<sup>rd</sup> and Adams Streets, 3<sup>rd</sup> and Webster Streets, and 3<sup>rd</sup> and Polk Streets).

TPD recognizes the City's goals of increasing pedestrian safety and walkability for students, residents, and visitors within the bustling Southside. TPD also realizes the City's residents and business owners will be impacted by the construction project. As such, our staff will endeavor to work with the contractor and City to mitigate the impacts and accommodate affected parties as much as possible.

Our extensive experience with this type of project, such as the City's 4<sup>th</sup> Street Pedestrian Improvement Project, provides TPD an unrivaled ability to deliver this project for the City. Our technical expertise, proven record of performance, and engineering knowledge will allow TPD to serve as a true partner with the City.

TPD (PennDOT BPID #000094) appreciates the City's desire to retain a PennDOT qualified consultant to provide professional services for construction inspection and administration services for this project. To demonstrate our understanding and approach to this project, please consider the following description of the Team's qualifications.

### Experience to Perform PennDOT Required Inspections and Documentation

TPD recognizes our role as the City's representative in the field and we take this responsibility very seriously. TPD's proposed staff are professional and responsive. They understand their responsibility to ensure the project is performed in accordance with the contract documents while keeping the City fully informed of the construction progress. It is important to note that TPD's Lehigh Valley Office is located within the City, on the Southside, less than two (2) miles away from the project site. This proximity will aid in TPD's ability to understand the context of the project as well as address any project concerns in a timely fashion.

TPD knows the documentation will need to be kept in accordance with PennDOT procedures and that our inspection services will be in accordance with the PennDOT standard scope of work for consultant construction inspection. TPD intends to approach the project similar to other locally sponsored, publicly funded construction projects we have completed in PennDOT Districts 5-0 and 6-0. TPD has a tremendous amount of experience with these Federal-Aid-Municipal (FAM) projects, as well as a strong understanding of the requirements, policies, procedures, and specifications that govern them. Construction management and inspection of these types of projects is our specialty. TPD is currently providing inspection services as the prime consultant for the Main Street Pedestrian Streetscape, Phase II in the Borough of Macungie in Lehigh County, PA. This project was the second phase of the Borough's Streetscape Master Plan, which includes the installation of pedestrian lighting, trees and pavers in Macungie Borough, Lehigh County on Main Street (SR 0100) from Race Street to Pine Street. TPD has also performed construction inspection services on the first phase of the Borough's Streetscape. TPD was responsible for daily field inspection and

documentation using PennDOT's CDS/V3 and ECMS systems, preparing work orders and contractor pay estimates, contractor coordination, contract compliance, and project finalization. Based on our experience and service, TPD has been selected by several municipal clients for repeat assignments, including the City. Other examples in PennDOT District 5-0 include the City of Reading, Borough of Macungie, Borough of Birdsboro, and Palmer Township (Northampton County).

TPD has worked with our clients for over 31 years implementing infrastructure projects to improve the quality of life in the communities we serve. As such, we understand that the quality of our work is critical in the delivery of an excellent product to the public. Therefore, TPD has developed a proven QA/QC program, utilized for all publicly funded projects.

Quality inspection starts with having familiarity with the project plans, specifications, and contract documents. The TPD Team requires its inspectors to become intimately familiar with the plans and review the pertinent construction specifications prior to the work. In order to maintain this quality, TPD has developed a proven QA/QC program, utilized for all projects and has been uploaded as a part of our firm's PennDOT Annual Qualifications package. Specific quality assurance procedures have been developed internally at TPD, including:

- » QA/QC and Training Coordinator for all inspection staff
- » Checklists and forms to complement those provided by PennDOT
- » Individual Team QA/QC manuals
- » Policies for documentation and filing of project items
- » Internal audits of the inspection staff verify proper inspection and documentation techniques are utilized
- » The construction management staff will visit the project site regularly to verify that proper procedures are being followed by TPD's inspectors.

#### Engineering and Inspector Qualifications and Certifications

To meet the staffing needs of this agreement, TPD is proposing a highly qualified professional with broad experience on similar projects and a strong understanding of PennDOT criteria, procedures and expectations. As shown on the construction inspection resume submitted within this proposal, the TPD Inspection Team has all necessary NICET, NECEPT, ACI, and PennDOT Concrete certifications to inspect this project per PennDOT requirements.

**Anthony "Tony" Dougherty, PE (610.999.3009)** has over 25 years of experience and serves as Vice President in Charge of the Construction Services Department at TPD. Mr. Dougherty will serve as TPD's Agreement Project Manager for this project and will oversee the overall project including any necessary scheduling, manpower designation, coordination of the inspector assignments and attendance at any necessary meetings. He will also be the official contact for this project. Mr. Dougherty served in this role for several projects in the City of Bethlehem, including the 4th Street Pedestrian Improvements, South Bethlehem Greenway Phase III, Lynn Avenue Bridge Replacement, and High Street Bridge Replacement Projects, all described in more detail below.

**Joel Wolfinger, NICET IV (267.372.3296)** will serve as QA/QC Coordinator for this project. Mr. Wolfinger has over 16 years of construction related experience and is NICET IV Certified in Transportation / Highway Construction. He is an extremely diligent Construction Manager and has extensive experience managing and supervising PennDOT and Municipal inspection contracts such as the SR 73/662 Corridor Safety Project for District 5-0. It is important to note that he is very familiar with the project area, having served the City as Inspector-in-Charge (IIC) for the Lynn

**Avenue Bridge Replacement Project.** He represented TPD and the City on the 4th Street Pedestrian Improvements, South Bethlehem Greenway Phase III, and High Street Bridge Replacement projects as well. In addition, Mr. Wolfinger serves as Tyler Price's direct supervisor, and will visit the site regularly to verify proper procedures are being followed. His intimate familiarity with construction of pedestrian safety improvement projects and inspection will be a huge asset to the project Team and the City.

**Inspector: Tyler Price, NICET I, a resident of the City, has a total of four (4) years of construction related experience and exceeds the PennDOT requirements of a Transportation Construction Inspector (TCI-2).** Mr. Price is NICET I Certified in Transportation / Highway Construction, ACI Concrete Certified and is a PennDOT Concrete and NECEPT Bituminous Field Testing Technician. Most recently, Mr. Price served as inspector for the SR 191 Resurface project (ECMS #101568). This project involved the resurfacing, milling, flexible base replacement, bituminous overlay, curb ramps, guiderail, pavement markings and other miscellaneous construction located in Bangor and Roseto Boroughs, and Washington and Upper Mount Bethel Townships, Northampton County. The Project runs from SR 512 (Market Street) to the Northampton/Monroe County line. In addition, Mr. Price also provided CI for the Powder Valley Road (SR 2025) project (ECMS #112643) in Upper & Lower Milford Townships, Lehigh County. This project involved the resurfacing of SR 2025 and SR 2033 using the following items: a bituminous overlay, guide rail update, pavement markings upgrade, and other miscellaneous construction. He also recently served as Inspector in District 5-0 for the Resurfacing projects (SR 183-M89, SR 2011-M89 & SR 23-M89) under E04413, WO's #2 & 5, which included ADA ramps and pavement marking upgrades, bituminous milling, overlay, base repair, scratch course and guiderail updates.

Mr. Price's resume is included in this proposal package and shows his experience inspecting PennDOT construction projects within District 5-0, and demonstrates his abilities related to PennDOT's construction inspection documentation procedures. In addition to the four (4) plus years of experience the inspector possesses, TPD brings significant expertise in the design of local, township, and county roadways and streetscapes, taking them through the various project delivery options (PennDOT PS&E, Local Let, design/build, etc.). In addition, all TPD inspectors are required to attend numerous PennDOT training seminars and courses focusing on different aspects of inspection and inspection documentation.

TPD even has a formal internal training program (*TPD University*) that utilizes our internal expertise to promote the continuing education of staff, quality assurance in project designs, and consistency of the firm's engineering, planning, and construction management and inspection services across all technical disciplines and office locations. TPD's support of this initiative is evident in the significant investment in staffing, technology, and firm-wide participation that makes these collaborative sessions possible.

#### Similar Project Experience

As stated above, The TPD Team has a tremendous amount of experience with FAM projects. As such, our staff has a firm grasp of the City's needs and are well versed in PennDOT's construction documentation systems, including ECMS, CDS/V3, online Project Collaboration Center, and Apple iPad applications. The following list of representative projects demonstrates TPD's experience with relevant projects of a similar nature:

- » 4<sup>th</sup> Street Pedestrian Improvements, *City of Bethlehem, Northampton County, PA* - This FAM project was a pedestrian improvement project encompassing eight city blocks along 4th Street in the City of Bethlehem constructed under ECMS #102722. It included excavation, sidewalk

repairs, concrete curb ramps, concrete curb, pavement restoration, street tree replacement and work zone traffic control. TPD's responsibilities included, daily inspection of construction activities, all ECMS documentation including work orders and estimates, contractor coordination, and facilitation of project progress meetings.

- » Phase III of the South Bethlehem Greenway Trail, *City of Bethlehem, Northampton County, PA* - TPD completed inspection for this proposed trail, which was the third phase of the South Bethlehem Greenway. The South Bethlehem Greenway initiative entails converting an abandoned rail line to a linear greenway trail, including a 12-foot wide asphalt pathway and related grading, stormwater and utility development, lighting, landscaping, bench and trash receptacle installation. In addition, the project includes pathway and stair connections to abutting neighborhoods, grade crossings and a pedestrian bridge crossing. This project was administered by PennDOT District 5-0 through the ECMS and CDS/NextGen systems and used PCTI funding.
- » Agreement E03895 & E04413, Districtwide Open End for Maintenance Projects, *PennDOT District 5-0* - TPD is currently providing inspection services as the Prime Consultant for the District on this open end contract. The 50+ work orders assigned under these agreements include projects such as, milling, base repairs, roadway betterments, High Friction Surface Treatment, median barrier, resurfacing, highway lighting contracts, stormwater facilities, bridge rehabilitations, and pavement markings.
- » Main Street Safety Project, Phase I & II, *Borough of Macungie, Lehigh County, PA* - TPD provided construction inspection services for two (2) phases of the Borough's Streetscape Master Plan. Phase I included the installation of new curb and sidewalk, curb extensions, crosswalks, ADA ramps, drainage improvements, traffic signal installations, pavement markings, and other miscellaneous construction in Macungie Borough, Lehigh County on Main Street (SR 0100) from Race Street to Chestnut Street. Phase II includes the installation of pedestrian lighting, trees and pavers in Macungie Borough, Lehigh County on Main Street (SR 0100) from Race Street to Pine Street. TPD was responsible for daily field inspection and documentation of these federally-funded projects using CDS/V3, preparing work orders and contractor pay estimates, contractor coordination, contract compliance, and project finalization duties.
- » Lindberg Neighborhood Connections Project, *Salisbury Township, Lehigh County, PA* - TPD provided inspection for this federally-funded project that aimed to make two main thoroughfares more pedestrian-and bicyclist-friendly. This project connects sections of Lindberg and Flexer Avenues, and TPD was responsible for providing construction inspection services for the construction of sidewalk, concrete driveway aprons, concrete curb ramps, and on-road treatments, such as painted "sharrows".
- » Lynn Avenue Bridge Replacement, *City of Bethlehem, Northampton County, PA* - TPD completed construction management and inspection services for the 90 year-old Lynn Avenue Bridge Replacement over Lehigh Valley Rail Management Railroad and Bethlehem Greenway in the City of Bethlehem, Lehigh County. This \$4.2M project was constructed under ECMS #12111. The existing structure was a single span, steel through-truss bridge with a span of 188.5' that was demolished and replaced with a single span, pre-stressed concrete, bulb tee Beam Bridge with a span of 88'.
- » High Street Bridge, *City of Bethlehem/Borough of Hellertown, PA* - TPD completed construction inspection for the replacement of the existing High Street Bridge. This structure is a 26-foot span, precast Con/Span arch structure. The construction entailed excavation, cast-in-place (CIP) concrete foundations, CIP wing-walls with architectural surface treatment, CIP moment slab and barriers, roadway construction, E&S-activities, and MPT (detour). The project was administered using ECMS and CDS/V3.

- » Penn Avenue Pedestrian Safety Improvements, *Borough of Sinking Spring, Berks County, PA* - This also was a FAM project which included the installation of new curb and sidewalk, curb extensions, crosswalks, ADA ramps, replacement of curb, sidewalk and other miscellaneous construction in Sinking Spring Borough, Berks County from Park Avenue to South Hull Street. TPD was responsible for project inspection duties including daily inspection and documentation using CDS/V3, preparing work orders and contractor pay estimates, contractor coordination, contract compliance, and project finalization duties.
- » Agreements E03855, E04510 & E04905, the Districtwide Open End Agreements to provide CI Services on a Variety of Locally Sponsored Projects, *PennDOT District 6-0* - Work performed under these agreements include pedestrian improvement, streetscape, trail, roadway, traffic, and bridge projects, including:
  - Avenue of the States, *City of Chester, Delaware County, PA* - This project consisted of streetscape improvements in the City of Chester's central business district. The corridor is a one lane, one-way roadway with on-street parking. The improvements consist of new curbing with roadway alignment adjustments, corner bump-outs, on-street parking Improvements, ADA accessible curb ramps, drainage improvements, and new pedestrian lighting.
  - Schuylkill River Trail/Mont Clare Bridge Connector, *Phoenixville Borough, Chester County, PA* - This project involved the construction of a shared use path, sidewalk, design build ADA ramps, modifications of the SR 29 bridge over the Schuylkill River, lighting, signing, pavement markings and other miscellaneous construction within a length of 1,100 feet between the Schuylkill River Canal and Ashland Street. This project closed a significant gap in the Schuylkill River Trail.
- » Penn Street Crosswalks and Penn Street Lighting Projects, *City of Reading, Berks County, PA* - This project located at the intersection of 3rd Street and Penn Street, included the construction and upgrade of traffic signal equipment, and minor improvements for upgrades to ADA curb ramps. The project included MPT and construction of concrete curb, sidewalk, bituminous pavement restoration, pavement markings, and application of a Duratherm street print pattern. The Lighting Project included installation of new streetlights on Penn Street from 2nd Street to 8th Street in order to create brighter and more uniform lighting on the sidewalks along these blocks to enhance security, increase pedestrian traffic along Penn Street and brighten the downtown area to draw new businesses. These projects were administered by PennDOT District 5-0 as the last paper projects in the State.
- » Norristown Main Street Streetscape - Phase II Project, *Norristown, Montgomery County, PA* - TPD completed construction management and inspection on the north and south sides of Main Street, from Cherry Street to Barbadoes Street. This project involved the construction of a sidewalk streetscape involving granite curb, concrete and brick sidewalk, street trees, period lighting and related amenities. This streetscape project was federally-funded (TE program) and was administered using CDS/NextGen and ECMS. The project also required extensive coordination between the Municipality, contractors, as well as adjacent commercial and residential tenants.
- » Marshallton Streetscapes & Traffic Calming, *West Bradford Township, Chester County, PA* - The project aided in the creation of a uniform sidewalk system, established welcoming traffic calming gateways into the village, created pedestrian crosswalks, and added roadside improvements and on-street parking through the village. Specific construction activities included decorative sidewalks, landscaping, storm sewer, sanitary sewer, water line installation, concrete mountable islands, pedestrian crosswalks and curb ramps, and coordination with numerous residential and commercial properties. This project was funded through PennDOT's PCTI program.

## Communication and Written Documentation Skills

TPD's level of responsiveness and communication is a point of pride for us. All of our project Team members are dedicated to the firm's goals for responsiveness. It is TPD's corporate practice to return all phone calls and email messages within four (4) hours, whether they are from external or "internal" clients. To support this practice, all employees are equipped with cell phones, voicemail, and email that is accessible from any internet connection. Our inspection staff is also provided laptop computers or tablets with cellular data connections. This way, they will have access to all project documents, publications, and communication tools. We understand that coordination with TPD and the client is essential to the success of the project. Therefore, TPD will maintain firm control of all construction aspects. TPD's efforts will include close coordination with the City to resolve any issues directly and to ensure that the City's best interests are met.

If issues arise that have the potential to affect the project cost or schedule, any such issues will be coordinated with the City and contractor to assure the project's goals are met. This coordination will be facilitated by several of TPD's standard practices that are inherently part of our construction inspection services, which will increase efficiency of the project's construction, thereby increasing quality. Examples of these practices include:

- » **Cost and Construction Item Monitoring:** TPD is sensitive to the funding concerns for today's infrastructure projects. With this in mind, TPD's inspector will closely monitor the progress of the construction and item quantities to anticipate any possible change orders. The TPD Team will evaluate the validity of any proposed change and coordinate any decision with the City. If the change is necessary resulting in an increase to the contract price, the TPD Team will negotiate the cost with the contractor as well as examine remaining items to determine if any can be removed or substituted to offset the change. In no case will the TPD Team recommend any substitution or removal that will jeopardize the safety or integrity of the project.
- » **Environmental Permit Compliance:** To assure compliance with all the environmental requirements of the project, the Team's inspector will review all associated environmental permits prior to construction. They will become familiar with all of the sequences and conditions of these permits and review them through daily inspections and completion of weekly E&S checklists. If any issues arise related to environmental permitting, the inspection staff will coordinate quickly with the City and the contractor to ensure these issues are mitigated and the conditions of the environmental permits are not violated.
- » **Meeting Milestones:** At the beginning of the project, the staff will review the proposed construction sequences for the project (MPT, E&S, etc.) with the Contractor and City representative to verify agreement between each other and the overall project schedule. During the project, the staff will closely monitor sequences, milestones, and work completed to anticipate possible delays. The Team will also coordinate with the contractor onsite daily to discuss any schedule concerns and possible solutions to ensure project compliance to the schedule. The TPD Team can also coordinate and conduct regular progress meetings with the contractor to ensure any issues concerning the timeline are resolved appropriately. Coordination with the City is a vital and necessary step in this process to ensure that all decisions are cohesive with the goal and timeline of the project.

**Consultant's Position Regarding Content:** Portions of this Statement of Interest contain information that is deemed proprietary. It is requested that the City first contact TPD to determine what information may be shared in compliance with any Right-To-Know Law request.



*Section 3*

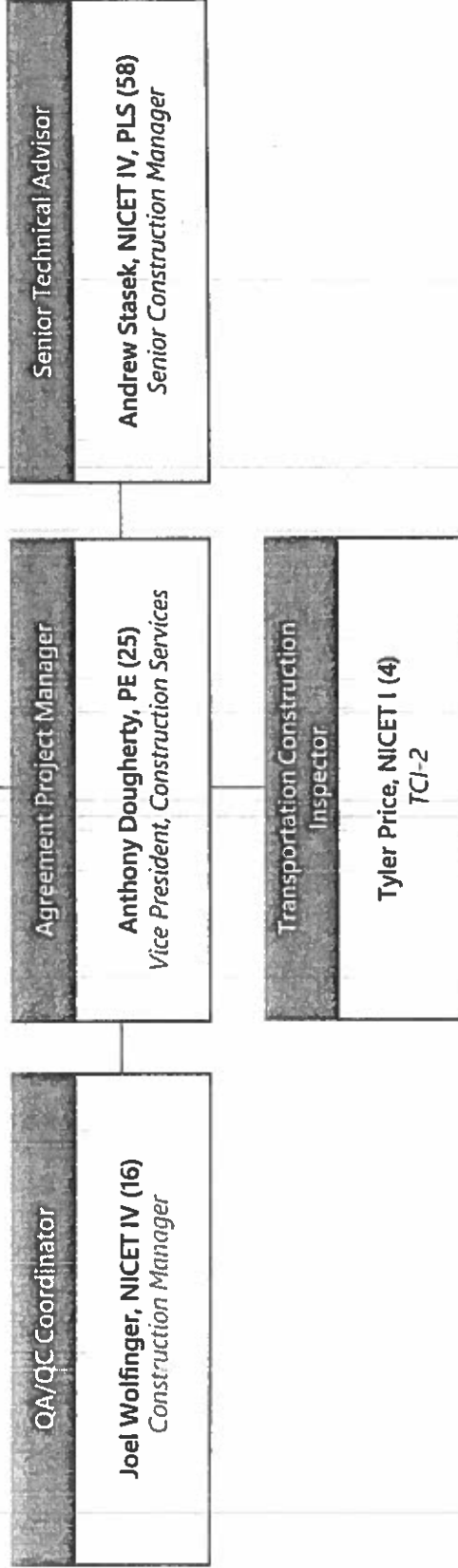
# **Organization Chart**

---



# Organization Chart

Construction Inspection Services for the South Bethlehem Corridor Connections Project  
City of Bethlehem, Northampton County, PA



(##) Denotes Years of Experience





*Section 4*

**Key Personnel  
Resume**

---



# Pennsylvania Department of Transportation

## Construction Inspection Resume

(Note: Duplicate this template for each employee's resume included with the submission)

Employee Name: Tyler G. Price

Company: Traffic Planning and Design, Inc.

Based on PennDOT requirements for this agreement, this employee qualifies as a TCI-2 per the following criteria: One (1) year minimum PennDOT experience as a Transportation Construction Inspector 1 (TCI-1) or higher, and has one (1) of the following three (3) certifications: PennDOT Concrete Technician Certification, NECEPT Field Technician Certification, or NICET Level II Certification or higher in Highway Construction, only NICET Certifications in Highway Construction are allowed unless special circumstances of other NICET subfields are requested for Central Office approval.

### Education

<i>Institution</i>	<i>Degree(s)</i>	<i>Year</i>	<i>Specialization</i>
Shippensburg University of Pennsylvania	BS	2016	Geo-Environmental Studies

### Certifications/Licenses/Other Training

<i>Type</i>	<i>Cert No.</i>	<i>Expires</i>	<i>Obtained</i>
ACI Concrete Field Testing Technician - Grade 1	01371487	07/01/21	07/01/16
NICET- Level 1 in Transportation / Highway Construction	152879	08/01/23	07/08/20
NECEPT -Bituminous Field Technician	560709	01/26/23	01/26/18
PennDOT Certified Concrete Field Technician	560709	01/11/23	01/11/18
GTA Nuclear Moist/ Density Gauge Testing Equipment			
OSHA 10 Hour Construction Safety and Health			
PennDOT TA-TCI Training Modules (12)			03/07/19
PennDOT 9 CMP-CSI Modules			2/26/20
Heartsaver First Aid CPR AED			

Years Experience *This Firm: 1*

*Total Construction Related Exp.: 4*

### Construction Inspection Experience or Construction Industry Related Experience

Employer/Client: TPD/PennDOT District 5-0

Title: TCI-2

SR 191 Resurface (ECMS

Location: 101568)

Dates Worked: 08/14/20 - Present

Duration: 1 Mo

### *Brief Project Description and Detailed Summary of Individual's Project Duties and Responsibilities*

Construction inspector for the SR 191 Resurface project (ECMS #101568). The project involves the resurfacing, milling, flexible base replacement, bituminous overlay, curb ramps, guiderail, pavement markings and other miscellaneous construction located in Bangor and Roseto Boroughs, and Washington and Upper Mount Bethel Townships, Northampton County, from SR 512 (Market Street to the Northampton/Monroe County line). Responsible for daily inspection and documentation of contract work using ECMS and iPad Mobile Applications.

Employer/Client: TPD/PennDOT District 5-0 Title: TCI-2 (07/20/20 - 08/13/20)  
TCI-1 (05/14/20 - 07/17/20)

Powder Valley Road, Upper &  
Location: Lower Milford Twp Dates Worked: 05/14/20 - 08/13/20 Duration: 3 Mo

**Brief Project Description and Detailed Summary of Individual's Project Duties and Responsibilities**

Construction inspector for the Powder Valley Road (SR 2025) project (ECMS #112643). The project involves the resurfacing of SR 2025 and SR 2033 using the following items: a bituminous overlay, guide rail update, pavement markings upgrade, and other miscellaneous construction located in Upper & Lower Milford Townships, Lehigh County. Responsible for daily inspection and documentation of contract work using ECMS and iPad Mobile Applications.

Employer/Client: PennDOT, District 5-0 Title: TCI-1

SR 183 - M89 Resurfacing  
SR 2011-M89 Resurfacing  
Location: SR 23-M89 Resurfacing Dates Worked: 07/2019 - 12/2019 Duration: 5 Mo

**Brief Project Description and Detailed Summary of Individual's Project Duties and Responsibilities**

Served as a TCI-1 for these projects under TPD's agreement E04413, Work Order 2 and Work Order 5. These resurfacing projects include bituminous milling, bituminous overlay, bituminous base repair, scratch course, ultra-thin wearing course, guide rail update, ADA ramps and pavement markings upgrade. For this project, was responsible for daily oversight and documentation of construction activities.

Employer/Client: TPD/PennDOT District 5-0 Title: TCI-1

Location: I-176 Median Barrier Dates Worked: 05/2019 - 07/2019 Duration: 2 Mo

**Brief Project Description and Detailed Summary of Individual's Project Duties and Responsibilities**

Construction inspector for the I-176 Median Barrier project (ECMS #104435), completed as part of Agreement E03903, Work Order 4. The project included installation of high tension guiderail or guiderail systematically where appropriate to close off the unprotected median for the prevention of cross over accidents and other miscellaneous construction in Berks county, New Morgan Borough, Caernarvon, Cumru and Robeson Townships and also included SR 12 in Muhlenberg Township, Berks County. Responsible for daily inspection and documentation of contract work using ECMS and iPad Mobile Applications, under the direction of Michael Kehler, PennDOT RE.

Employer/Client: TPD/PennDOT District 5-0 Title: TCI-1

SR 534, Sec M89 & SR 13-3021-  
Location: POC, Carbon County Dates Worked: 04/01/19 - 04/29/19 Duration: 1 Mo

**Brief Project Description and Detailed Summary of Individual's Project Duties and Responsibilities**

Construction inspector for these resurfacing projects on SR 13-3021-POC (ECMS #110658), completed as part of Agreement E03895, Work Order 30 which includes SR 3012 between Seg/Offset 0150/0434 to Seg/Offset 0170/3165 (Jim Thorpe Borough) and SR 4014 between Seg/Offset 0010/0000 to Seg/Offset 0020/1165; and SR 534 (ECMS #109267) between Seg/Offset 0292/0000 to Seg/Offset 0382/2401 (Kidder and Penn Forest Townships), completed as part of Agreement E04413, Work Order 6. These projects included ADA Ramp construction, base repair, milling and overlay, guiderail adjustments, and line striping. Responsible for daily inspection and documentation of contract work using ECMS and iPad Mobile Applications.

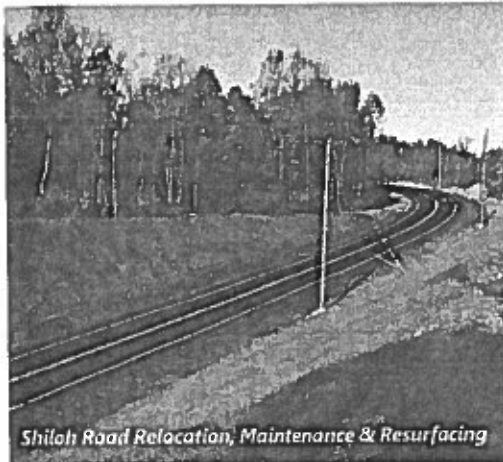
Employer/Client: <u>Maser Consulting P.A.</u>	Title: <u>Inspector</u>
Location: <u>Allentown, Pa</u>	Dates Worked: <u>11/2016 to 02/2019</u> Duration: <u>2 Yrs, 3 Mo</u>
<b><u>Brief Project Description and Detailed Summary of Individual's Project Duties and Responsibilities</u></b>	
<p>Performed daily inspections, including Construction Quality Assurance to verify conformance with the project plans and specifications, compaction density testing via non-movement and nuclear gauge testing methods of roadway subgrade, subbase, and bituminous pavement, and E&amp;S visual site inspection. Duties included daily inspection reports, maintaining relationships with internal and external clients, communicating with contractors on-site and relaying issues to immediate supervisors in the office. Projects consisted of the FedEx HUB Roadway Improvements Phase I/II (Willow brook Rd, Race Street, Airport Rd.); Valley Hospital Improvements (Winters Ave Paramus, NJ); and Penwood Warehouse Expansion Improvements (Allentown, PA).</p>	
Employer/Client: <u>(GTA)</u>	Title: <u>Engineering Technician</u>
Location: <u>Quakertown, Pa</u>	Dates Worked: <u>5/2016 to 11/2016</u> Duration: <u>6 Mo</u>
<b><u>Brief Project Description and Detailed Summary of Individual's Project Duties and Responsibilities</u></b>	
<p>Responsibilities included the observation of construction crews to ensure engineering plans were being followed according to site specific specifications, write technical daily field reports detailing the scope of work performed, sampled soils/stone utilizing ASTM standards to determine optimum characteristics for construction purposes including Maximum Dry Density, Optimum Moisture Content, etc., performed nuclear density compaction testing for hot-mixed asphalt, stone, and backfill materials, field testing fresh concrete on-site for slump, temperature, air-entrainment, and unit weight, tested cured concrete using ASTM standards for compressive strength, performed hand probe and Dynamic Cone Penetrometer (DCP) test for subgrades of building footings, performed retaining wall inspection – footing, courses, geo-grids, drainage, backfill compaction, etc., performed wheel load test with loaded tri-axle dump truck, observed test pits to validate depths of proposed utilities in accordance with the plans and specifications. Projects consisted of the Liberty Logistics Center Lot 4 &amp; 5 (Alburtis PA); Turn 14 Distribution Center (Hatfield PA); and Mack Trucks Warehouse Additions (Macungie PA).</p>	
Employer/Client: <u>Conserv./Development</u>	Title: <u>Survey Intern</u>
Location: <u>Carlisle, Pa</u>	Dates Worked: <u>6/2015 to 7/2015</u> Duration: <u>2 Mo</u>
<b><u>Brief Project Description and Detailed Summary of Individual's Project Duties and Responsibilities</u></b>	
<p>Performed 2015 Pennsylvania Chesapeake Bay Watershed Cropland Roadside Transect Survey funded by the PADEP. Assigned to six counties within the Chesapeake Bay watershed in Pennsylvania and worked as a member of a Survey Team, consisting of a conservation district representative and an agricultural technician contractor. Responsibility was to direct the team in the field, take observation GPS waypoints via ESRI ArcMap, and record data given by agricultural technician into a collection spreadsheet via Microsoft Excel.</p>	
Staffmark Temporary Agency -	
Employer/Client: <u>Crayola's College Student Program</u>	Title: <u>Machine Operator</u>
Location: <u>Easton, Pa</u>	Dates Worked: <u>5/2012 to 8/2013</u> Duration: <u>6 Mo</u>
<b><u>Brief Project Description and Detailed Summary of Individual's Project Duties and Responsibilities</u></b>	
<p>Worked two summers as a Machine Operator in Crayola's Crayon Packing Department. Responsibilities included to efficiently operate various machines that package different boxes of crayons, identify and quickly solve problems with machine malfunctions in multiple packaging lines, and required to work in team environment with ample communication.</p>	



*Section 5*

# **Related Experience**

---



Shiloh Road Relocation, Maintenance & Resurfacing



SR 1035, Section HBH

## Construction Services Expertise

Ensuring a Seamless Transition from the Design Phase to Project Completion

### CONSTRUCTION SERVICES

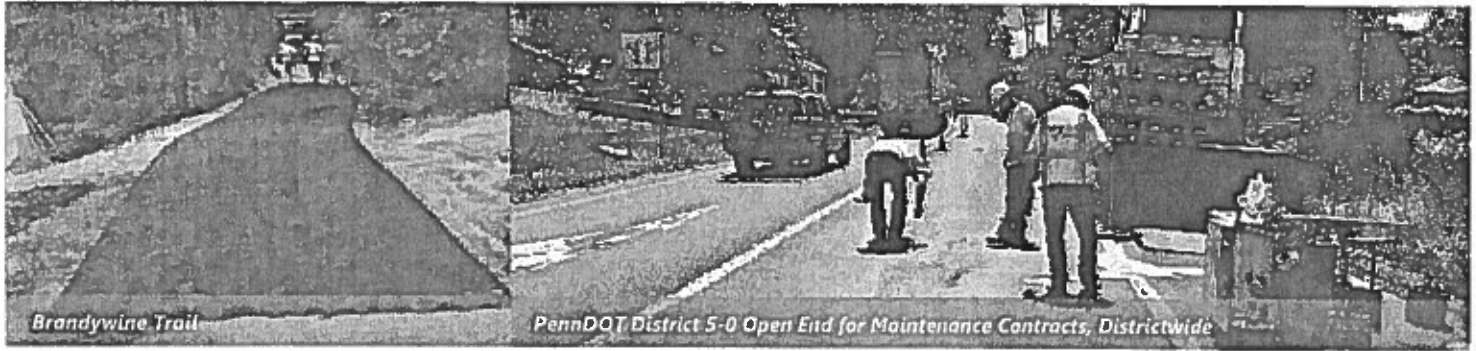
- » Bidding and Contract Document Preparation
- » Bidding Services
- » Cost Estimates and Quantity Takeoffs
- » Construction Management and Contract
- » Administration
- » Construction Oversight/Inspection
- » Traffic Signal Inspection
- » Scheduling
- » Shop Drawing Review
- » Payment and Change Order Review and Processing
- » Project Constructability Review
- » Claims Management and Avoidance

### OVERVIEW

TPD's Construction Services (CS) Team is comprised of fully qualified and certified individuals throughout the firm's 12 office locations. The Team possesses specialized construction management and inspection expertise and design experience to provide our clients with a complete project resource.

Our staff has experience with roadway, structures, signal, streetscape, and trail construction projects. This experience includes local projects (local and federally funded), state projects, and private sector projects.

The CS Team is led by Anthony Dougherty, PE, who has over 25 years of experience in transportation engineering. As Vice President in Charge of the Construction Services Department, Mr. Dougherty manages the company's construction projects, functioning as the main point of contact, providing our clients with superior customer service. Additionally, Andrew Stasek, PLS., and Herman Lloyd serve as resources to the TPD CS Team. Mr. Stasek is a 40-year PennDOT veteran, with vast knowledge of construction techniques. He previously held the position of Assistant District Construction Manager at PennDOT, managing major projects such as the \$550 million, 32-mile I-78 project through the Lehigh Valley. Mr. Lloyd possesses 58 years of experience and serves as Vice President, Philadelphia Area Regional Leader. He began his career in the A/E/C industry over 50 years ago employed by PennDOT, where he primarily focused on construction management and inspection, including serving as the Assistant Construction Engineer. After serving 29 years at PennDOT, he spent over two decades at two A/E/C consulting firms, also focusing on construction management, and transitioning into leadership roles. At TPD, his efforts include further expanding TPD's Philadelphia presence, business development, and focusing on TPD's Diversity & Inclusion (D&I) efforts.



Brandywine Trail

PennDOT District 5-0 Open End for Maintenance Contracts, Districtwide

# Construction Services Expertise

*Ensuring a Seamless Transition from the Design Phase to Project Completion*

## INCREASED KNOWLEDGE

TPD's Construction Services team is proactive about obtaining the latest construction - related qualifications and training. TPD's core group of construction inspectors have obtained the following certificates and training experience:

## CERTIFICATIONS

- » NICET (Levels II – IV)
- » NECEPT/PennDOT Concrete Field Tech.
- » NECEPT/PennDOT Bituminous Field Tech.
- » CDS / NextGen Operator (CDS/V3)
- » ACI Concrete Field Testing Technician
- » IMSA Traffic Signal Inspection
- » ATSSA Traffic Control Supervisor
- » NJ Certified Traffic Control Coordinator

## DOT TRAINING

- » Introduction to Documentation
- » Regional Winter Schools
- » Material Sampling & Field Testing
- » ECMS II – Wave 5
- » SharePoint (Project Collaboration Center)
- » Soils & Foundations Workshop
- » Hot Mix Asphalt Construction
- » Advanced Construction Management
- » CPM Schedule Monitoring
- » Work Zone Traffic Control Manager – Train the Trainer
- » Managing Highway Contract Claims
- » Geosynthetics Engineering
- » Construction Cost Estimating

## SELECT PROJECT EXPERIENCE

### Chester County, PA

- » PennDOT District 6-0 Districtwide Open End
- » SR 1035, Sec. HBH Bridge Rehabilitation
- » SR 0041, Sec. VCB Two Bridge Replacements
- » SR 0023, Sec. HBG Superstructure Replacement
- » Speakman's Covered Bridge

### Berks County, PA

- » Fleetwood Walkway Project
- » Shiloh Road Relocation

### Delaware County, PA

- » SR 3023, Sec. HBH Bridge Rehabilitation
- » Knowles Avenue Pedestrian Underpass

### Montgomery County, PA

- » Lewis Road Corridor Improvements
- » Colonial Road Bridge over Swamp Creek
- » Huntingdon Pike Traffic Signal Upgrades

### Northampton County, PA

- » Main Street Bridge over SR 0033
- » South Bethlehem Greenway, Phase III

### Schuylkill County, PA

- » County Bridge #106, Mill Street over Schuylkill River

### Other

- » PennDOT District 5-0 Open End for Maintenance Contracts, Districtwide
- » Washington Township Boulevard Bridge, Franklin County, PA
- » Federal Safe Routes to School, Jonestown Borough, PA
- » Elizabethtown Traffic Signal Synchronization, Lancaster County, PA
- » Falls Township Connector Trail, Bucks County, PA
- » City of Camden LED Traffic Signal Upgrades, Camden County, NJ
- » Battleship New Jersey Repaving, Camden County, NJ

- » SR 2012, Sec. HBG Bridge Rehabilitation
- » Marshallton Streetscapes & Traffic Calming
- » Brandywine Trail
- » Tredyffrin Township Sidewalks

- » SR 61 Grand Street Phase II
- » Route 422 Corridor Improvements

- » Lansdowne Gateway Trail

- » Edge Hill Road Improvements
- » Pottstown Pedestrian Underpass
- » Main Street Streetscape Phase II

- » Bethlehem Township Roadway Improvements

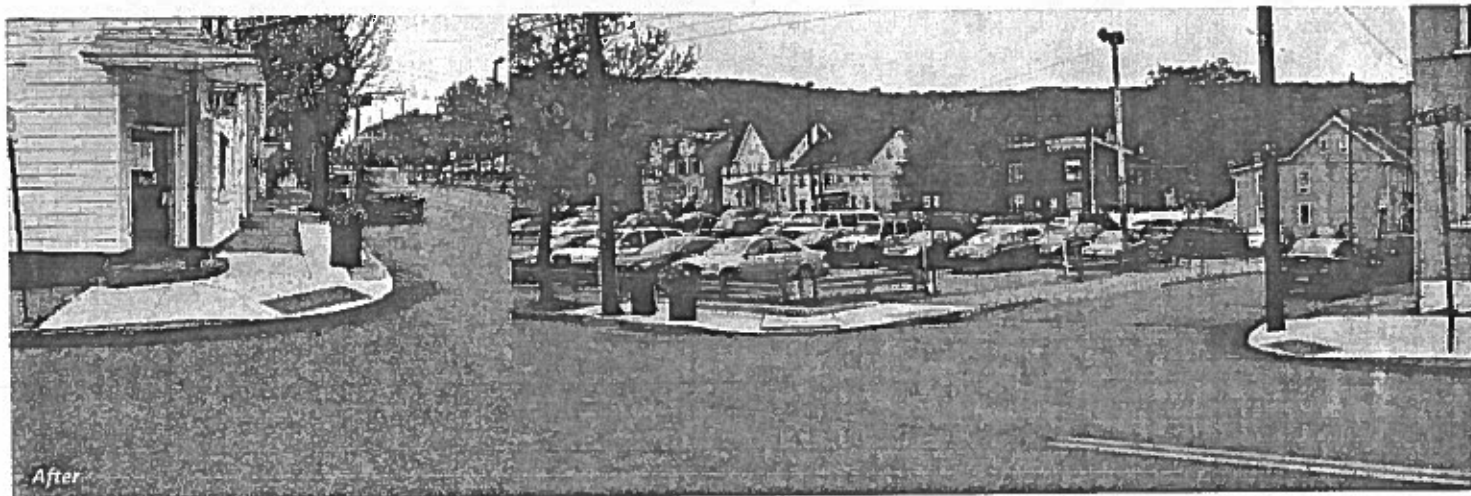
- » Schuylkill County Betterment





# 4th Street Pedestrian Improvements

City of Bethlehem, Northampton County, PA



## CLIENT

City of Bethlehem  
10 East Church Street  
Bethlehem, PA 18018  
610.997.7636

## PROJECT OVERVIEW

This Federal Aid Municipal (FAM) project was a pedestrian improvement project encompassing eight city blocks along 4th Street in the City of Bethlehem constructed under ECMS #102722. It included excavation, sidewalk repairs, concrete curb ramps, concrete curb, pavement restoration, street tree replacement and work zone traffic control.

## COMPLETION DATE

June 2017

TPD's responsibilities included, daily inspection of construction activities, all ECMS documentation including work orders and estimates, contractor coordination, and facilitation of project progress meetings.

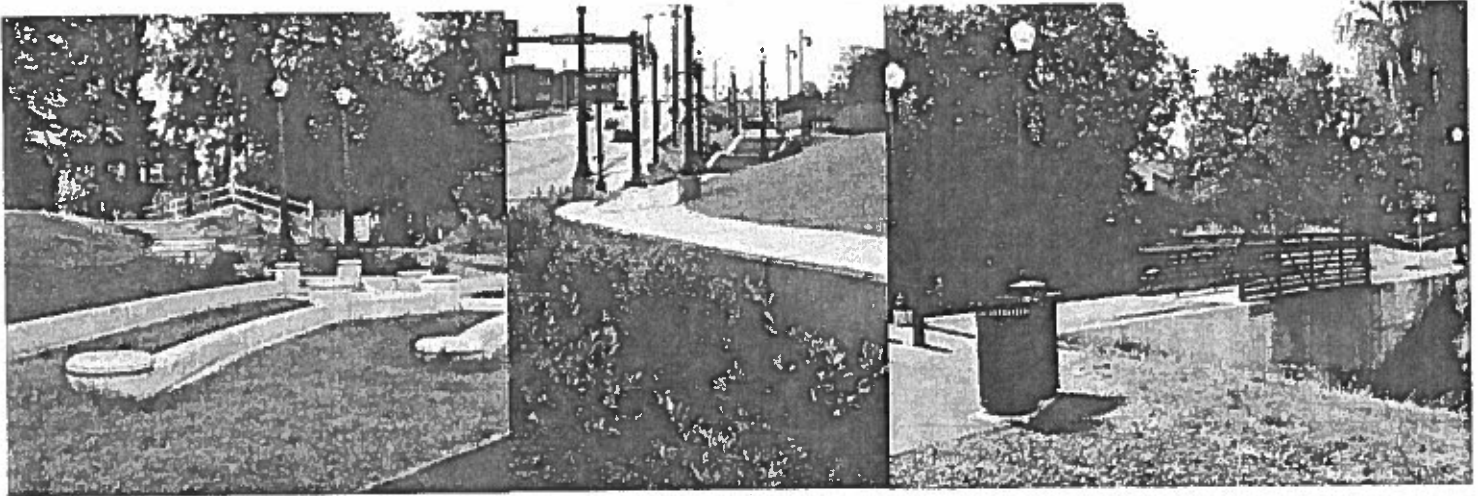
## CONSTRUCTION COST

\$360,000



# South Bethlehem Greenway, Phase III

City of Bethlehem, Northampton County, PA



## CLIENT

City of Bethlehem  
10 East Church Street  
Bethlehem, PA 18018  
610.997.7636

## COMPLETION DATE

July 2011 / Fall 2012

## CONSTRUCTION COST

\$1,800,000

## PROJECT OVERVIEW

TPD completed construction inspection services for Phase III of the South Bethlehem Greenway trail.

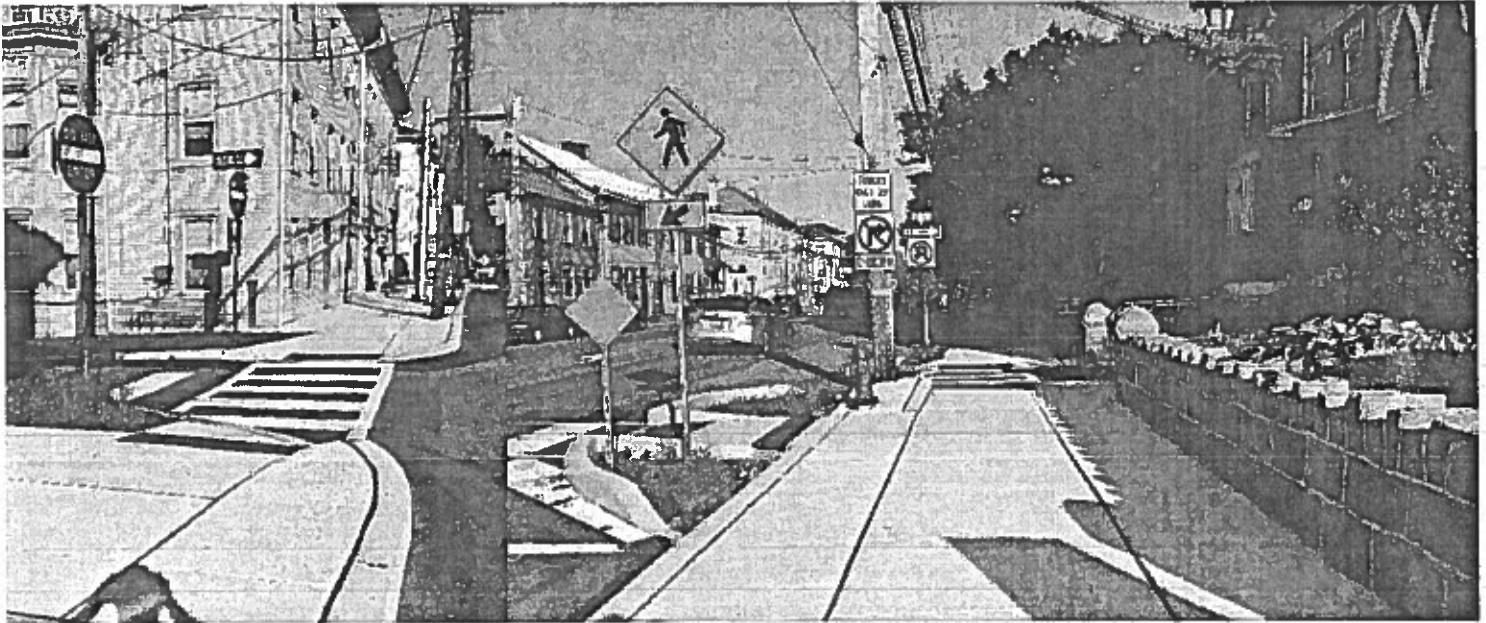
The trail project represented the third phase of the South Bethlehem Greenway. The overall project entails converting an abandoned rail line to a linear greenway trail, including a 12-foot wide asphalt pathway, stair connections to abutting neighborhoods, grade crossings with plaza designs specific to the neighborhoods, public gardens, and a pedestrian bridge crossing.

Construction activities included asphalt paving, earthwork, stormwater and utility connections, lighting, landscaping, bollard installation, bench and trash receptacle installation, and concrete work.

Phase III of the project had oversight by PennDOT District 5-0 since funding from the PA Community Transportation Initiative (PCTI) was utilized. TPD performed inspection services according to all PennDOT regulations including all documentation and records management using PennDOT's CDS/NextGen and ECMS systems.

# Main Street Safety Project

Borough of Macungie, Lehigh County, PA



## CLIENT

Borough of Macungie  
21 Locust Street  
Macungie, PA 18062  
610.966.2503

## COMPLETION DATE

April 2018

## CONSTRUCTION COST

\$740,000.00

## PROJECT OVERVIEW

This FAM project includes the installation of new curb and sidewalk, curb extensions, crosswalks, ADA ramps, drainage improvements, traffic signal installations, pavement markings, and other miscellaneous construction in Macungie Borough, Lehigh County on Main Street (SR 0100) from Race Street to Chestnut Street.

TPD was responsible for daily field inspection and documentation using CDS/V3, preparing work orders and contractor pay estimates, contractor coordination, contract compliance, and project finalization duties.

# Lindbergh Neighborhood Connections

Salisbury Township, Lehigh County, PA



## CLIENT

Salisbury Township  
2900 South Pike Ave  
Allentown, PA 18103  
610.797.4000

## COMPLETION DATE

July 2017

## CONSTRUCTION COST

\$174,000

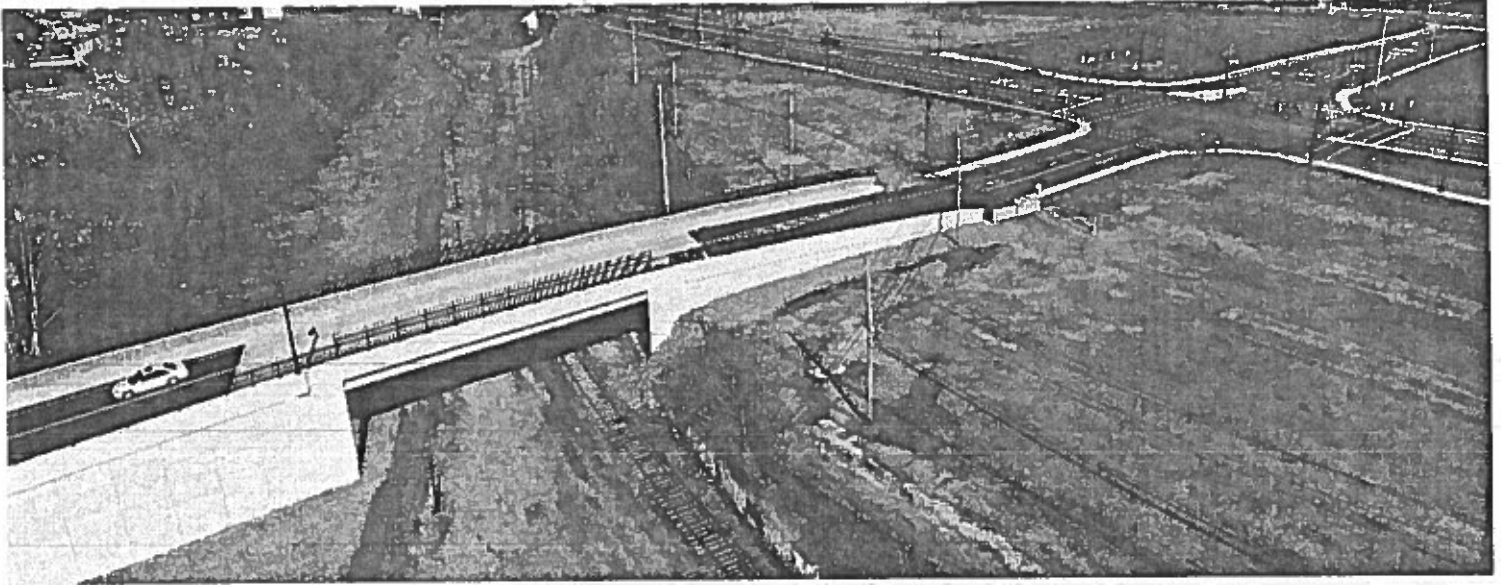
## PROJECT OVERVIEW

This FAM project involved the construction of sidewalk and concrete driveway aprons along Flexer Avenue as well as the provision of curb ramps at the intersection with Lindberg Avenue.

The project also included new crosswalks and curb ramps at the intersection of Lindberg Avenue and Buckingham Drive to connect with the Lindberg Park perimeter trail. New pavement markings were installed on Lindberg Avenue and Flexer Avenue to narrow the travel lanes and provide shoulders. New signing and shared lane markings ("sharrows") were also installed to improve bicycling conditions within the neighborhood.

# Lynn Avenue Bridge Replacement

City of Bethlehem, Northampton County, PA



## CLIENT

City of Bethlehem  
10 East Church Street  
Bethlehem, PA 18018  
610.997.7636

## COMPLETION DATE

March 2018

## CONSTRUCTION COST

\$4,200,000

## PROJECT OVERVIEW

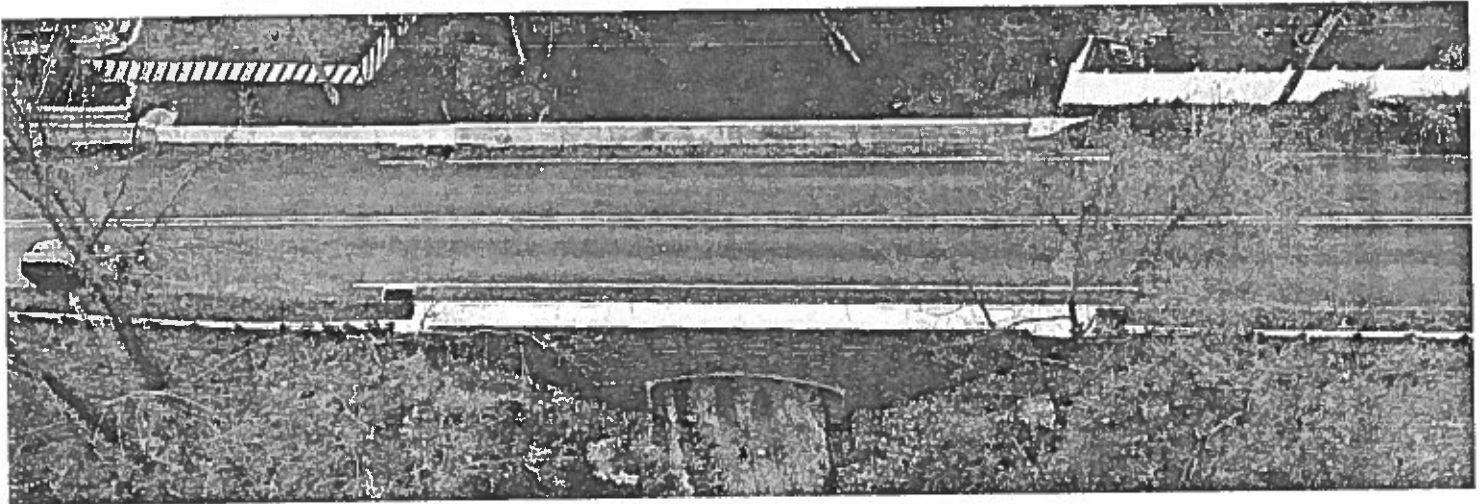
TPD completed construction management and inspection services for the 90 year-old Lynn Avenue Bridge Replacement over Lehigh Valley Rail Management Railroad and Bethlehem Greenway in the City of Bethlehem, Northampton County (constructed under ECMS# 12111).

This bridge was a critical route that connected traffic from Route 412 to neighborhood areas in the southeast part of the city. The existing structure was a single span, steel through-truss bridge with a span of 188.5' that was demolished and replaced with a single span, pre-stressed concrete, bulb tee beam bridge with a span of 88' on cast-in-place abutments and spread footings. To reduce the span, the approaches were extended by placing over 13,000 CY of fill and 15,000 SF of MSE retaining walls.

The project crossed a rail spur and also included removal of contaminated fill, construction of roadway approaches with moment slabs, MSE Walls, ADA compliant ramps, drainage, sidewalk, decorative fence, decorative lighting and restoration of the Bethlehem Greenway Trail.

# High Street Bridge Replacement

City of Bethlehem, Northampton County, PA



## CLIENT

City of Bethlehem  
10 East Church Street  
Bethlehem, PA 18018  
601.997.7636

## COMPLETION DATE

October 2017

## CONSTRUCTION COST

\$937,113.00

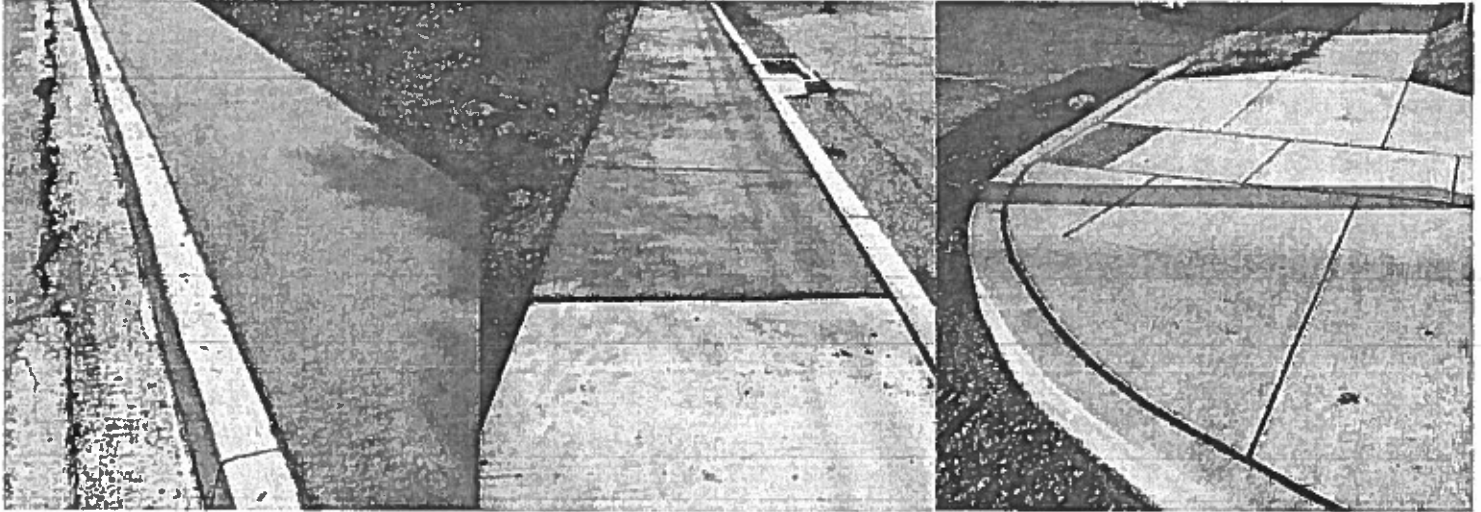
## PROJECT OVERVIEW

This project included the replacement of the SR 7301 (High Street) Bridge over the Norfolk Southern Railroad, west of SR 0412 near the Hellertown Borough line.

TPD completed construction inspection for the replacement of the existing High Street Bridge in the City of Bethlehem, PA. This structure is a 26-foot span, precast Con/Span arch structure. The construction entailed excavation, cast-in-place (CIP) concrete foundations, CIP wing-walls with architectural surface treatment, CIP moment slab and barriers, roadway construction, E&S activities, and MPT (detour). The project was administered using ECMS and CDS/V3.

# Penn Avenue Pedestrian Safety Improvements

*Borough of Sinking Spring, Berks County, PA*



## CLIENT

Borough of Sinking Springs  
3940 Penn Ave  
Sinking Springs, PA 19608  
610.678.4903

## COMPLETION DATE

August 2017

## CONSTRUCTION COST

\$335,000

## PROJECT OVERVIEW

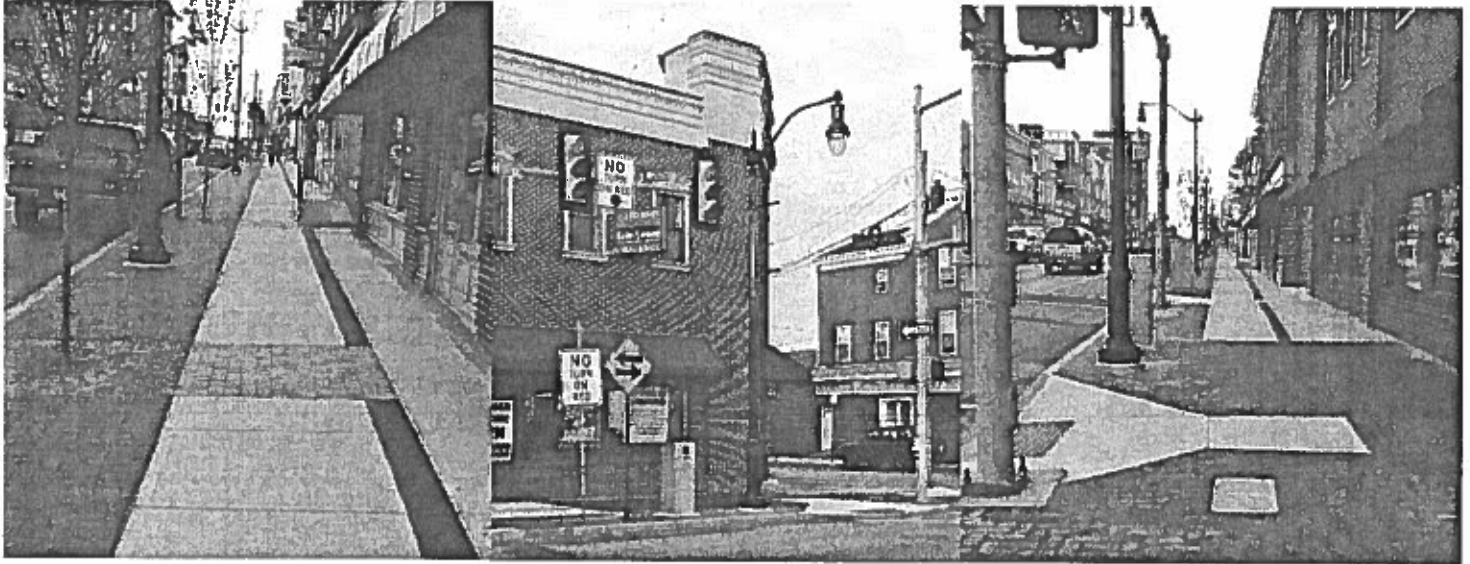
This federally-funded project included the installation of new curb and sidewalk, curb extensions, crosswalks, ADA ramps, replacement of curb, sidewalk and other miscellaneous construction in Sinking Spring Borough, Berks County from Park Avenue to South Hull Street.

TPD was responsible for project inspection duties including daily inspection and documentation using CDS/V3, preparing work orders and contractor pay estimates, contractor coordination, contract compliance, and project finalization duties.



# Main Street Streetscape, Phase II

Municipality of Norristown, Montgomery County, PA



## CLIENT

Municipality of Norristown  
235 East Airy Street  
Norristown, PA 19401  
610.270.0450

## COMPLETION DATE

Winter 2013

## CONSTRUCTION COST

\$500,000

## PROJECT OVERVIEW

Phase II of the Main Street Streetscape project was completed on a 795 foot area of the north and south sides of Main Street, from Cherry Street to Barbadoes Street in Norristown, PA. This project involved the construction of a sidewalk streetscape involving granite curb, concrete and brick sidewalk, street trees, period lighting and related amenities.

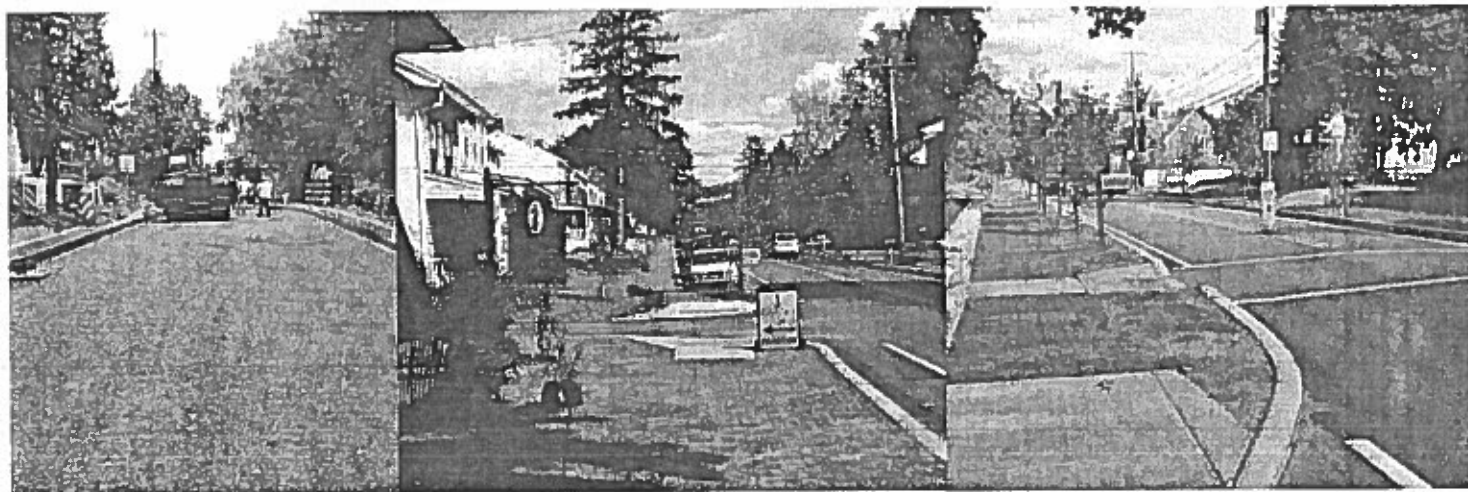
For the Municipality of Norristown, TPD provided Construction Management and Inspection services, which included construction documentation, document preparation, acceptance testing and inspection, project materials certification, and quality assurance and quality control.

This streetscape project was federally-funded and was administered using CDS/NextGen and ECMS. The project also required extensive coordination between the Municipality, contractors, as well as adjacent commercial and residential tenants.



# Marshallton Streetscapes

West Bradford Township, Chester County, PA



## CLIENT

West Bradford Township  
1385 Campus Drive  
Downingtown, PA 19335  
610.269.4174

## PROJECT OVERVIEW

This project supported the preservation and enhancement of the 250-year-old Village of Marshallton by creating a mixed-use community along a 3/4 mile corridor.

The construction project created a uniform sidewalk system, established welcoming traffic calming gateways into the village, created pedestrian crosswalks, and added roadside improvements and on-street parking through the village.

## COMPLETION DATE

Spring 2012

## CONSTRUCTION COST

\$2,000,000

Specific construction activities included:

- » Roadway re-profiling, reconstruction, and paving
- » Stormwater pipe installation (approximately 2,000 linear feet)
- » Sanitary sewer installation
- » Water line installation
- » Concrete mountable islands
- » Decorative sidewalks
- » Pedestrian crosswalks and curb ramps
- » Landscaping
- » Coordination with numerous residential and commercial properties

Since the project utilized funds from the PA Community Transportation Initiative (PCTI), TPD performed inspection services according to all PennDOT regulations including all documentation and records management using PennDOT's CDS/NextGen and ECMS systems.



TRAFFIC PLANNING AND DESIGN, INC.

WWW.TRAFFICPD.COM

**TPD Technical Proposal**  
**PennDOT Agreement No. L00543**  
**Southside Pedestrian Safety Construction Inspection**

**Part 1 - Construction Inspection**

**I. STAFFING**

Traffic Planning and Design, Inc. (TPD) proposes to provide the City and PennDOT District 5-0 with technically sound, responsive, and cost-effective construction inspection services for this Agreement. TPD meets PENNDOT's requirements and has experience with the required tasks. TPD's services will be in accordance with the Department's Scope of Work as emphasized and/or modified below.

**Agreement Project Manager** – TPD's Agreement Manager, Anthony "Tony" Dougherty, P.E., will manage the inspection staff out of TPD's Pottstown and Bethlehem offices. Mr. Dougherty has experience managing construction inspection and management projects and will be available at all times to the City personnel to coordinate staffing availability and other project issues.

**II. METHOD OF PAYMENT**

The method of payment for services and work will be Specific Rate of Compensation together with Direct Cost other than Payroll, as specified by the Department, and Direct Costs of Services and Work Performed By Others, if applicable.

Specific Rate of Compensation - The maximum hourly payroll rate per classification for each Department Inspection Classification for each calendar year shall be as indicated in the Department Details and as modified by Strike-Off Letters issued during the duration of the agreement. Prior to an employee being assigned to work on a project, we shall receive approval of an employee's hourly rate from Central Office and the District's Project Manager through ECMS. As the Department has indicated they reserve the right to increase the maximum hourly payroll rate per classification consistent with statewide policy, TPD may request rate increases to be consistent with this policy.

Premium Time - TPD's policy is to compensate eligible employees with premium pay (1.5 times pay rate) for overtime. Premium time rates are paid for hours worked in excess of 40 hours per week. Paid Time Off (PTO - Vacation, Holiday and sick days) will not be counted towards the 40 hours for the purpose of determining overtime. TPD understands that the Department allows the following six (6) holidays (7.5 hours per day) to count toward the forty (40) hours for the purpose of determining overtime: New Years Day; Memorial Day; Independence Day (Declaration Day); Labor Day; Thanksgiving Day; and Christmas Day. The workweek is defined as Sunday A.M. to Saturday P.M. for the purpose of determining overtime. The workweek definition may be changed if mutually agreed upon in writing by the Department's Assistant District Engineer – Construction. Employees in the TCM or higher Department Classification will not receive premium compensation directly from the Department or City.

### Direct Costs Other Than Payroll

Travel Compensation: TPD's policy is to reimburse our employees for reimbursable mileage at the PENNDOT approved rate which is currently \$0.575 per mile. Reimbursable mileage falls into one of two categories:

- 1) On-the-job mileage - the actual mileage driven on the Project.
- 2) Commute mileage - mileage to and from the Project by the most direct route from the inspector's residence to the work site and return. However, the first 15 miles in each direction is considered normal commuting travel and will not be eligible for reimbursement. By current Department policy, this commute mileage is capped at an equivalent of a total of 150 miles per day. If the project is over 65 miles from the inspector's home, then the inspector may choose lodging accommodations not to exceed the allowable rate, which is the current GSA maximum allowable for the area where the inspector is working, in lieu of commute miles. Commute miles to/from the project at the beginning and end of the work week will be reimbursed up to 75 miles maximum each way.

On the rare occasion when within a 24-hour period an individual is required to work an A.M. shift and return during a P.M. shift, mileage for both shifts will be allowed. Proper documentation must be approved by the City's Representative or Supervisor and kept on file to be submitted for reimbursement.

Direct costs other than payroll could include cell phone usage, project mileage, travel, and lodging costs as appropriate and when approved. TPD will provide iPad or other acceptable computer device to the inspector for documentation purposes. Each inspector will also have a cellular telephone for their use. **TPD will not charge for the monthly data or usage charges for these devices on our monthly invoices.**

Tolls will be reimbursed if the toll road is the shortest distance between the inspector's home and his/her place of work. Copies of receipts are to be provided for reimbursement with each invoice when toll reimbursement is requested.

Parking will be reimbursed if it is justified to perform the duties needed by the inspector. Receipts are to be provided for reimbursement.

TPD shall furnish all safety equipment for its employees (hard hats, safety vests, etc.), unless otherwise directed. No direct reimbursement will be made for this equipment.

TPD shall each furnish all hand tools for our respective employees (6 foot rules, tapes, hand levels, etc.). No direct reimbursement will be made for this equipment.

### **III. PRECONSTRUCTION CONSIDERATIONS**

Notice-to-Proceed - The City will send a written or electronic (through ECMS) Notice-to-Proceed, for each Agreement Part, to TPD. TPD will not seek reimbursement for any work or services provided prior to the Notice-to-Proceed.

Preconstruction Conference - If directed, TPD's inspection and management staff will attend the preconstruction conference to discuss with the Contractor those matters pertaining to the work on this

agreement.

#### **IV. RECORDS AND DOCUMENTATION**

Our proposed inspection staff will keep records through PennDOT's ECMS PSA Module and document the work by methods approved by the Department. All documentation, including source documents, shall be made part of the project record.

Copies of the following Publications will be furnished by TPD either in hard copy form or electronically on the company supplied iPad/Computer device:

- Publication 2 - Project Office Manual
- Publication 8 - Construction Manual
- Publication 19 - Field and Laboratory Test Manual
- Publication 212 - Official Traffic Control Devices
- Publication 213 - Temporary Traffic Control Guidelines
- Publication 408 - Specifications (1 copy per inspector)

#### **V. CONSTRUCTION INSPECTION**

Our assigned staff will inspect the work and administer this agreement under the supervision and direction of the City's Supervisor/Manager and Department's FAM Coordinator. Specifically, our Inspectors will provide electronic or written documentation as to whether the work is or is not conforming with the approved plans, specifications, and contract provisions; document the quality and quantity of materials and work items; prepare record drawings and record all pertinent information related to the execution and progress of the work; measure and recommend acceptance for payment of completed work; be knowledgeable of and comply with all applicable FHWA regulations; cooperate and consult with City and Department officials during the course of the contract; and perform other duties as may be required.

#### **VI. MATERIALS CONTROL**

Our Inspectors will assist the City in performing the required materials sampling and testing program in accordance with Department approved methods. Our inspection staff will abide by the Department's approved materials acceptance procedures, while laboratory testing shall be performed by the Department's Materials Testing Division. The construction contractor or Department shall provide all testing equipment unless specified otherwise in the Department Details.

#### **VII. PAYMENTS TO CONTRACTOR**

Our staff will prepare pay estimates in the Department's preferred format for this agreement. The City will be responsible for making payments to the Contractor in accordance with the terms of their contract.

#### **VIII. WORK ORDERS**

Our staff will prepare Work Orders for the project. The City and Department will be responsible for issuing any Work Orders.

## **IX. MONITORING CONTRACT TIME AND SCHEDULE ADJUSTMENTS**

As appropriate, our staff shall assist the City and Department with the completion of various tasks associated with monitoring contract time and schedule adjustments. Such tasks shall include: monitoring of an Early Start, Late Finish, Base Line Chart that displays the contractor's project schedule, including project cash flow; and monitoring of the Base Line Chart and the contractor's actual work performed compared to project schedule for the life of the project.

The Department and City will be responsible for approving contract time and/or schedule adjustments.

## **X. CONTRACT COMPLIANCE**

TPD's CI staff will ensure contractor compliance with the labor standard provisions, the safety and accident prevention provisions, and the equal opportunity provisions of the construction contracts as stated in the Department's Scope of Work.

TPD shall not have control over or charge of, and shall not be responsible for, safety precautions and programs in connection with the work of the contractor; these are solely the contractor's responsibility under the contractor's contract, particularly Section VIII of the Required Contract Provisions on Federal-Aid Projects.

## **XI. CONTRACT FINALIZATION AND PROJECT ACCEPTANCE**

Our inspection staff will participate with the City and Department in semi-final inspections and prepare detailed notes of work that requires correction or completion for this agreement. Upon notification from the Contractor that all deficiencies are satisfied, our inspectors will participate with the City and Department in the final inspections. We will then give to the City and Department written recommendations of acceptance.

The inspection staff will also determine the final quantity of each contract item from the project records. This information will be forwarded to the City and Department within 30 days of Contract Completion. The inspection staff will prepare work orders and estimates necessary to resolve any quantity disputes.

### **Department Details**

In response to the scope of work, TPD will provide ONE (1) Transportation Construction Inspector (TCI). TPD agrees to the PennDOT standard scope of work dated March 2019.

#### **Specific Rate of Compensation:**

TCI: 1 Inspector, 736 straight time hours 40 overtime hours

#### **Direct Costs:**

3,500 Commute miles

850 On-job miles

iPad – 4 Months

Cell Phone – 4 Months

TPD will provide iPads or other acceptable computer device to the inspector for documentation purposes. TPD will not charge for the monthly iPad data charges or cell phone usage on our monthly invoices.



home site map help



AMY B. ROHRBACH

**LEGAL DOCUMENT**

<b>Agreement:</b> L00543	<b>Project Specific</b>	<b>Negotiation Complete</b>
<b>Name:</b> Construction Inspection Agreement		<b>Selection Process:</b> Sole Source
<b>Initiating Business Partner:</b> 002069 - City of Bethlehem		

**Project Specific Agreement L00543**

**\$55,122.96**

Maximum Agreement Cost

**Traffic Planning and Design, Inc. 23-2557966**

Consultant - FID

**Specific Rate of Compensation - Construction Inspection**

Method(s) of Payment

<u>Location</u>	<u>Route</u>	<u>Section</u>
BETHLEHEM	---	BCC

THIS AGREEMENT, made and entered into on [EXECUTION DATE], at 10 East Church Street, Bethlehem, PA, between City of Bethlehem, acting through its Mayor, hereinafter called the Municipality, and Traffic Planning and Design, Inc., a Corporation of CONSULTANTS, registered as such in the Commonwealth of Pennsylvania, their heirs, executors, administrators, successors, or assigns, ("CONSULTANT").

**WITNESSETH:**

**A. Scope Of This Agreement**

**1. Project Identification**

The Consultant, for and in consideration of the payment or payments specified in this AGREEMENT, shall perform all work and services, and furnish all equipment and materials not otherwise provided, for supplementary construction inspection and documentation services under the direction of the Department's Inspector-in-Charge.

**Part 1 - CANCELLED**

**Part 2 - Construction Inspection**

State Project Number: 0-90315-T-7-BCC-0550-375

Federal Project: T055-298-Z301

MPMS Number: 110647

Maximum Amount: \$55,122.96

Method of Payment: Specific Rate of Compensation - Construction Inspection

**2. Terms, Conditions and Provisions**

a. The Consultant agrees to comply with and to provide the required work and services in accordance with

the provisions listed below, which are incorporated into this AGREEMENT by reference, as though physically attached.

- i. Commonwealth Contractor Responsibility Provisions, dated October 25, 2010
  - ii. Consultant Integrity Provisions, dated January 14, 2015
  - iii. Commonwealth Nondiscrimination Clause for Consultant Agreements, dated August 15, 2018
  - iv. Federal Nondiscrimination and Equal Employment Opportunity Clauses, dated January 1976
  - v. Offset Provision for Commonwealth Contracts, dated October 25, 2010
  - vi. Pennsylvania Election Code, dated February 22, 2001
  - vii. Publication 442, Bureau of Design Specifications for Consultant Agreements, dated November 6, 2019
  - viii. Provisions Concerning the Americans With Disabilities Act, dated October 14, 2011
  - ix. US DOT Standard Title VI/Non-Discrimination Assurances, dated June 26, 2019
  - x. Enhanced Minimum Wage Provisions (July 2018)
- b. By signing this Agreement, the Consultant certifies their compliance with the following requirements:
- i. Consultant's Certification of Non-Collusion, dated February 1990
  - ii. Certification Regarding Debarment, Suspension and Other Responsibility Matters, dated August 1990
  - iii. Certificate of Restrictions on Lobbying, dated August 6, 1990
  - iv. Consultant's Acceptance of PA Workmen's Compensation Act, dated August 1999
- c. By signing this Agreement, the Municipality certifies their compliance with the following requirement:
- i. Municipality's Certificate of Non-Collusion, dated January 1999
- d. The Consultant agrees to comply with and to provide the required work and services in accordance with the Municipality's Standard Agreement Special Requirements, dated February 2014 and the following standard method of payment special provisions: Method of Payment - Specific Rate of Compensation - Construction Inspection (Municipal), dated February 28, 2001, which have been made available to the Consultant in electronic or paper form, and the Consultant's Technical Proposal, and Price Proposal, which are incorporated into this Agreement by reference.
- e. The scope of work and services, as set forth in the Consultant's technical proposal, are to be performed in conformance with the requirements of this Agreement and the applicable provisions of the current Department Publications, Manuals, Handbooks, Policies and Procedures. All indicated Responsibilities of the Department of Transportation will be construed to mean responsibilities of the Municipality. The Municipality and the Consultant shall confer at any time when the Department issues an amendment, revision, amplification, increase, and/or change to any Publication, Manual, Handbook, Policy or Procedures to determine whether there is a change in scope and/or accepted work and services completed by the Consultant which is ordered changed. The Municipality, with the approval of the Federal Highway Administration (FHWA) when applicable, where there is such a change, will issue a Supplemental Agreement.

## **B. Agreement Duration**

### **1. Notice To Proceed**

The consultant shall not proceed with work and services required under any Part of this Agreement until specifically authorized by the Municipality to proceed on that Part in the form of an electronic Notice to Proceed (NTP) issued through the Engineering and Construction Management System (ECMS).

### **2. Time Of Completion**

- a. The Consultant shall complete all of the work and services covered by each Part of this Agreement within the time period indicated below:

Part 2 - Within 6 calendar months after the NTP date.

- b. The Consultant shall not be eligible for and shall not request reimbursement from the Municipality for any costs incurred under an Agreement Part after the expiration of that Part.
- c. The time of completion for a Part may be extended by the execution of a Supplemental Agreement or by a letter signed by an authorized Municipal individual.

### **C. Compensation**

#### **1. Maximum Cost**

- a. The total cost of each Part of this Agreement shall not exceed the maximum cost for each Part as specified in the Consultant's Price Proposal. The total maximum cost of this Agreement shall not exceed **\$55,122.96** without prior approval by the Municipality and by the Federal Highway Administration (FHWA), where applicable, in the form of a Supplemental Agreement signed by the Municipality and the Consultant.
- b. The maximum costs under each Part may be adjusted when the Consultant establishes and the Municipality and the Federal Highway Administration, if applicable, agrees that there has been or is to be a significant change in the following:
  - i. Scope, complexity, or character of the original work and services to be performed, induced, caused or directed by the Municipality.
  - ii. Conditions under which the original work and services were required to be performed, neither foreseen by the Municipality nor by the Consultant at the time of execution of the original Agreement, nor created thereafter by the Consultant.
  - iii. Duration of work, if the change from the time of completion specified in the Agreement was induced, caused or was the result of directions issued by the Municipality.
  - iv. The Municipality will not reimburse the Consultant for any costs incurred in excess of the maximum amount stipulated for any category of funds on the Consultant's invoice template as approved by the Municipality at the time the costs were incurred.

### **Specific Rate Factor Condition**

Overhead rate(s) used to establish specific rate factors under this Agreement are subject to further review and modification by the Department. The statement "These specific rate factors shall remain fixed for the life of this Agreement" in the standard method of payment document attached hereto is null and the Department reserves the right to adjust specific rate factors, by supplemental Agreement, if further review of compensation components included in the overhead rates used to establish the specific rate factors are determined to be unreasonable. Revisions to a specific rate factor by supplement would be effective the execution date of this original Agreement.

### **Direct Costs Other Than Payroll**

Direct Costs Other Than Payroll indicated in the Price Proposal are included for estimating purposes only. Charges for Direct Costs Other Than Payroll shall conform to current Department limitations and be invoiced at actual costs incurred or allowable Department maximum, whichever is less.

**Document Status: Municipal Agreement Owner Review**

**Prepared By: Jackson, Marcia R.**

**Municipal Representative: Mayor**



**Attachments**

Name	Created By	Created On
<i>No records found.</i>		

<b>Workflow</b>			
Status	Name	Disposition	Date/Time
Draft	Marcia R Jackson/PennDOT	Submit	10/23/2020 01:30:36 PM
Consultant Review	Kevin L Johnson/PennDOT BP-000094 - President	Approve	10/23/2020 06:29:11 PM
<b>Comment:</b> This comment is associated to a workflow action and will only be saved when performing a workflow action.			

<b>Audit Information</b>			
Created By	Created On	Modified By	Modified On
Marcia R Jackson/PennDOT	10/22/2020 02:00:38 PM	Kevin L Johnson/PennDOT BP-000094	10/23/2020 06:29:11 PM

You are currently logged in as Amy B. Rohrbach.

Release: 77.0  
Session size: 0.1k

[PennDOT](#) | [Home](#) | [Site Map](#) | [Help](#) | [Pennsylvania](#)  
Copyright © 2009 Pennsylvania Department of Transportation. All Rights Reserved.  
[PennDOT Privacy Policy](#).

Mon Oct 26 08:06:38 EDT 2020  
Official ECMS Date/Time