

407-409 VINE STREET



View of Existing Primary (East) Facade, Looking West

Recessed street level wall of 409 Vine Street was determined to be structurally deteriorated and needs to be reconstructed. Shingle siding at transom is not original, although the transom element was likely original above a storefront window

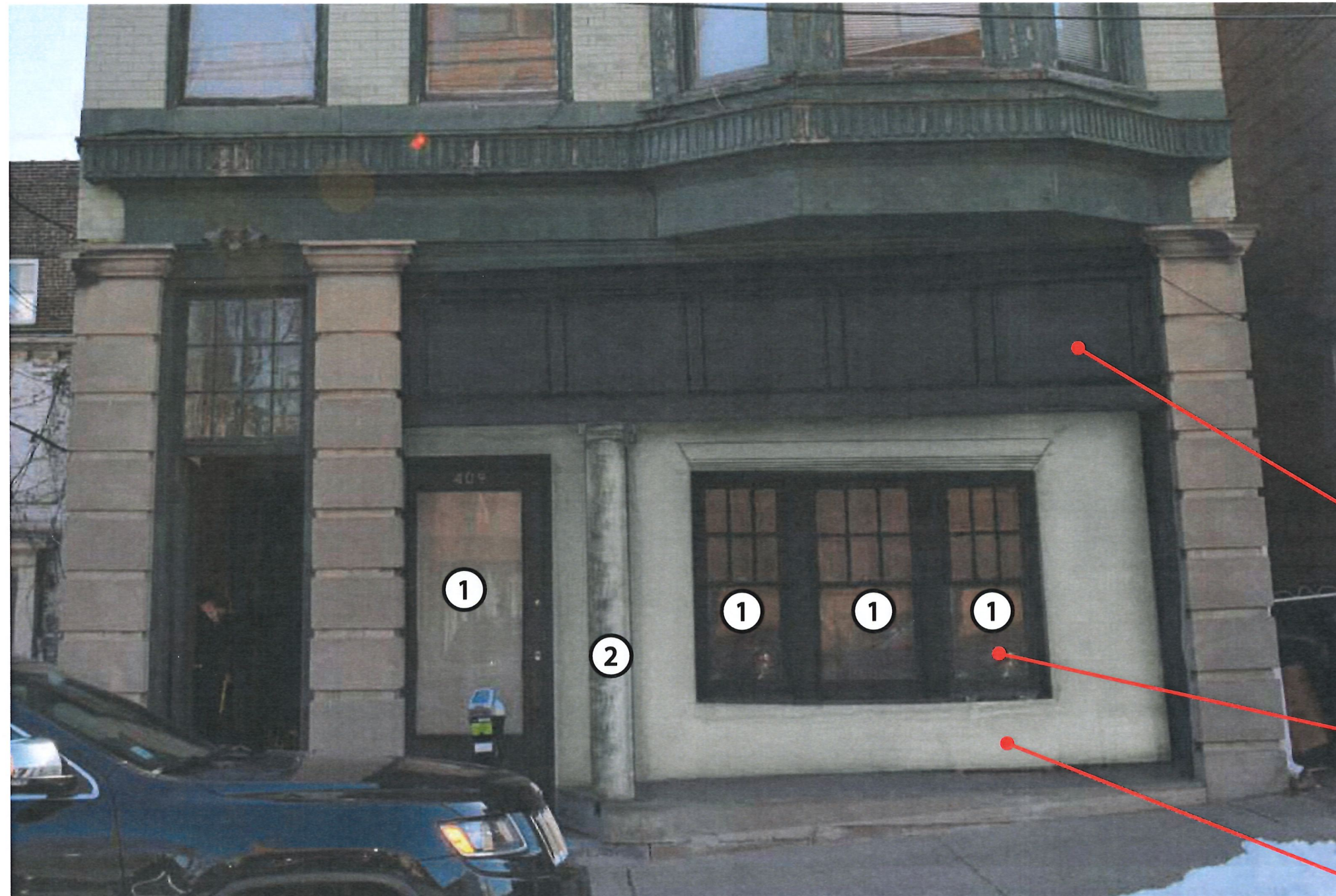


Views of Proposed Treatment of Primary (East) Facade Street Level, Looking West

Recessed street level wall of 409 Vine Street will be reconstructed in its existing location with doors and windows in-kind. The transom element is proposed to remain as it likely originally featured panelized glazing above an enclosed storefront window. See notes on following page regarding specific material alterations.



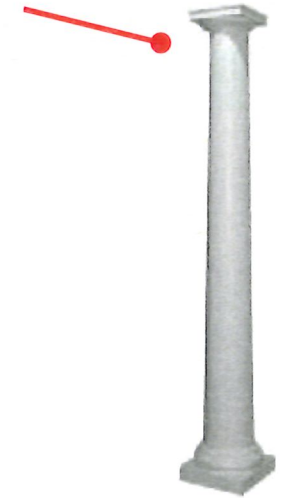
407-409 VINE STREET



Enlarged View of Proposed Primary (East) Facade at Street Level

LEGEND

- ① REPLACE WINDOWS AND DOOR IN-KIND
- ② REMOVE DECORATIVE IRON POST AND REPLACE WITH HISTORICALLY APPROPRIATE DORIC POST (FIBERGLASS OR COMPOSITE)



REMOVE SHINGLES ON TRANSOM AND REPLACE WITH WOOD PANELING AND RAISED WOOD TRIM TO RECALL LIKELY ORIGINAL RHYTHM OF TRANSOM WINDOWS ABOVE A STOREFRONT

REMOVE AC UNIT AND WOOD PANEL. NEW WINDOWS TO BE ALUM. CLAD WOOD W/ SDL UPPER SASHES. SIZES TO MATCH EXIST. AS CLOSELY AS POSSIBLE WITH WIDE MULLION BETWEEN WINDOWS (COLOR TO BE DARK GREEN TO MATCH EXIST.

DETERIORATED WALL TO BE RECONSTRUCTED (STRUCTURALLY COMPROMISED) AND BRICK TO BE REPLACED WITH STUCCO AT EXTERIOR; NEW WOOD FRAMING AT INTERIOR TO BE REBUILT IN EXIST. LOCATION

407-409 VINE STREET



Close-up View of Recessed Wall



Close-up View of Transom Existing Siding

407-409 VINE STREET



Streetview of 407-409 Vine Street, Looking northeast from across the street