

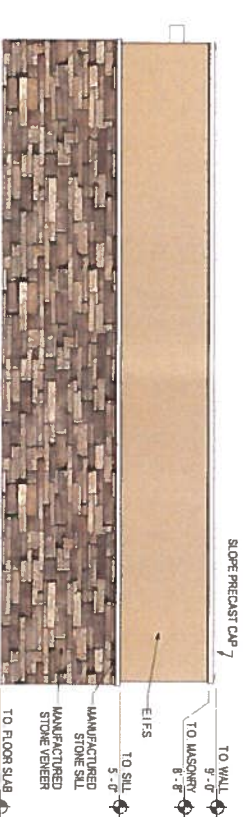
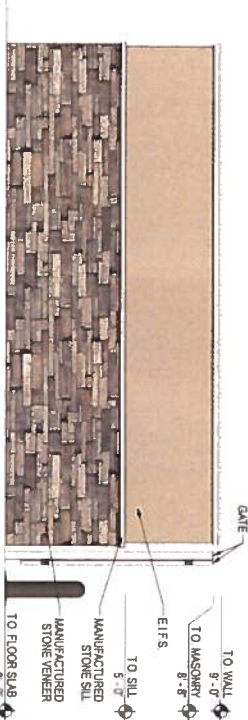
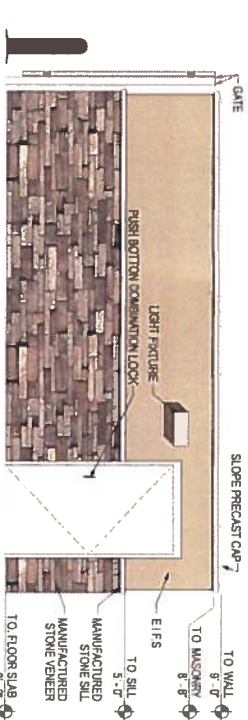
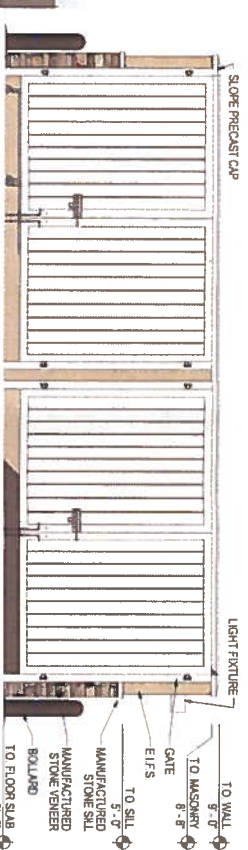
NOTE:  
SIGNAGE IS SHOWN FOR REFERENCE ONLY  
SEPARATE PERMIT REQUIRED

FLOOR PLAN

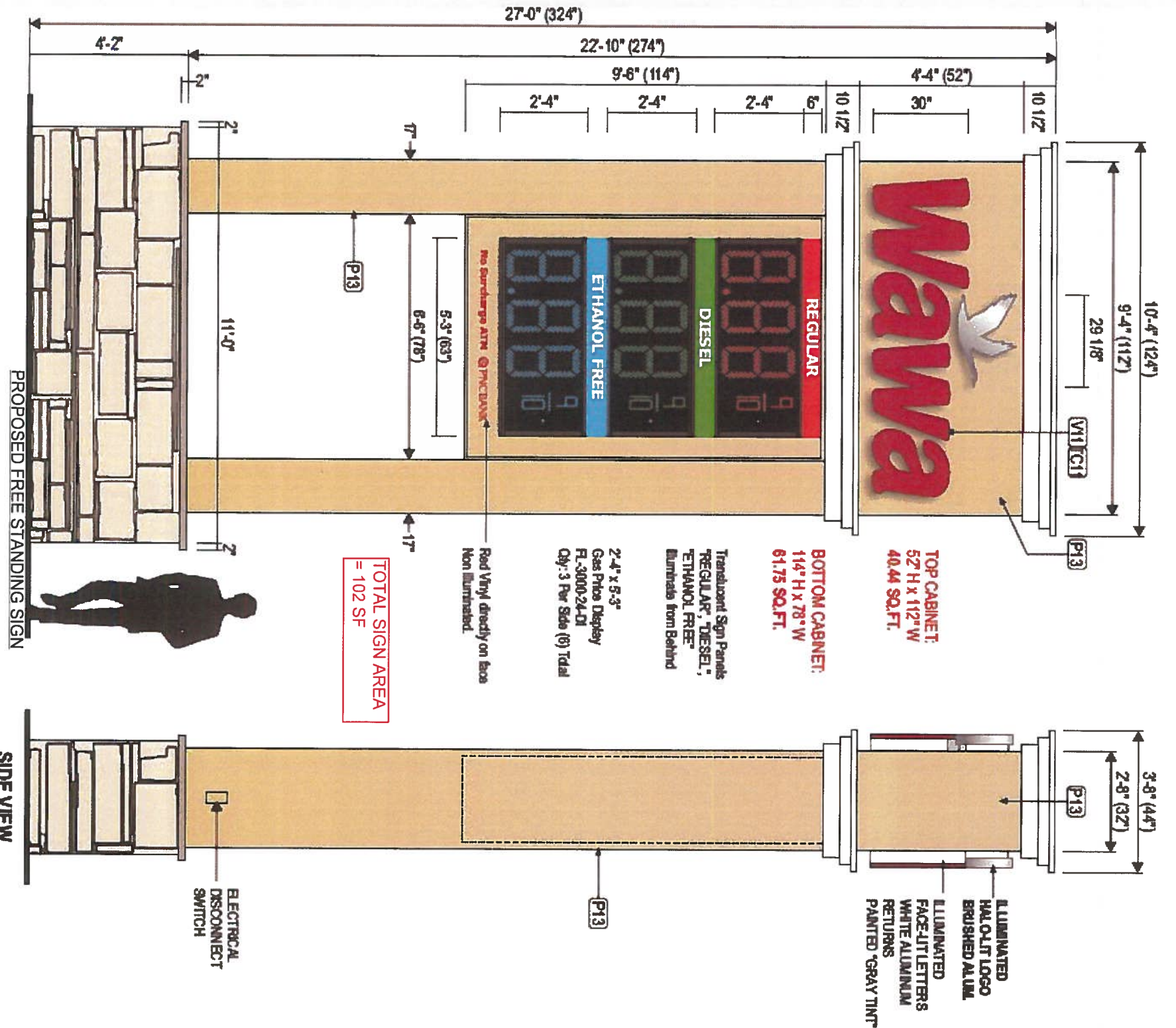


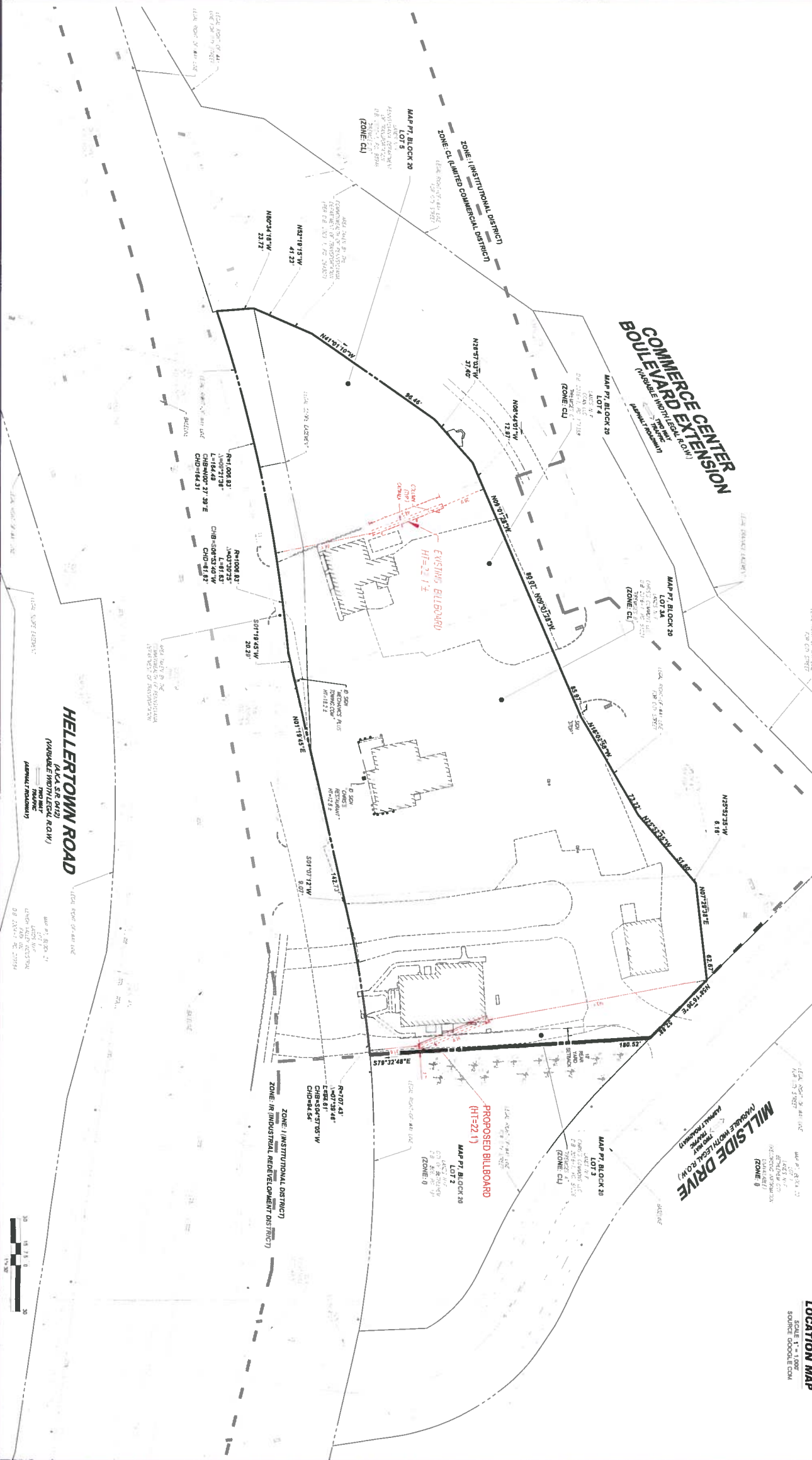
**Cuhaci & Peterson**  
Architects Engineers Planners  
ORLANDO • PHILADELPHIA

**WAWA W50FB PA\_v.2019.01 - STORE #8142**  
RT 412 Hellertown Rd & Commerce Center Blvd, Bethlehem, PA • C&P Project #2200525 • 08-03-2020



- Metal Door Benjamin Moore White Diamond BM 221-49
- EIFS A Dymek Versal 11000
- Manufactured Stone Veneer Benjamin Moore Versal 11000





**BOHLER**

SITE CIVIL AND CONSULTING ENGINEERING  
 LAND SURVEYING  
 PROGRAM MANAGEMENT  
 LANDSCAPE ARCHITECTURE  
 SUSTAINABLE DESIGN  
 PERMITTING SERVICES  
 TRANSPORTATION SERVICES

REV.	DATE	COMMENT

**811**

Call before you dig.

ONE CALL IS THE EASY WAY TO FIND ALL THE UTILITY LINES UNDERGROUND BEFORE YOU DIG. CALL 811 TODAY.

**PROJECT:** BILLBOARD SITE PLAN

**FOR:** CCAN, LLC

174-324 HELLERTOWN ROAD  
 CITY OF BETHLEHEM  
 NORTHAMPTON COUNTY  
 PENNSYLVANIA  
 18015

**BOHLER**

1800 MAIN ST. SUITE 200  
 CHALMERS PA 18011  
 Phone: (717) 998-9100  
 Fax: (717) 998-9102  
 www.bohlerengineering.com

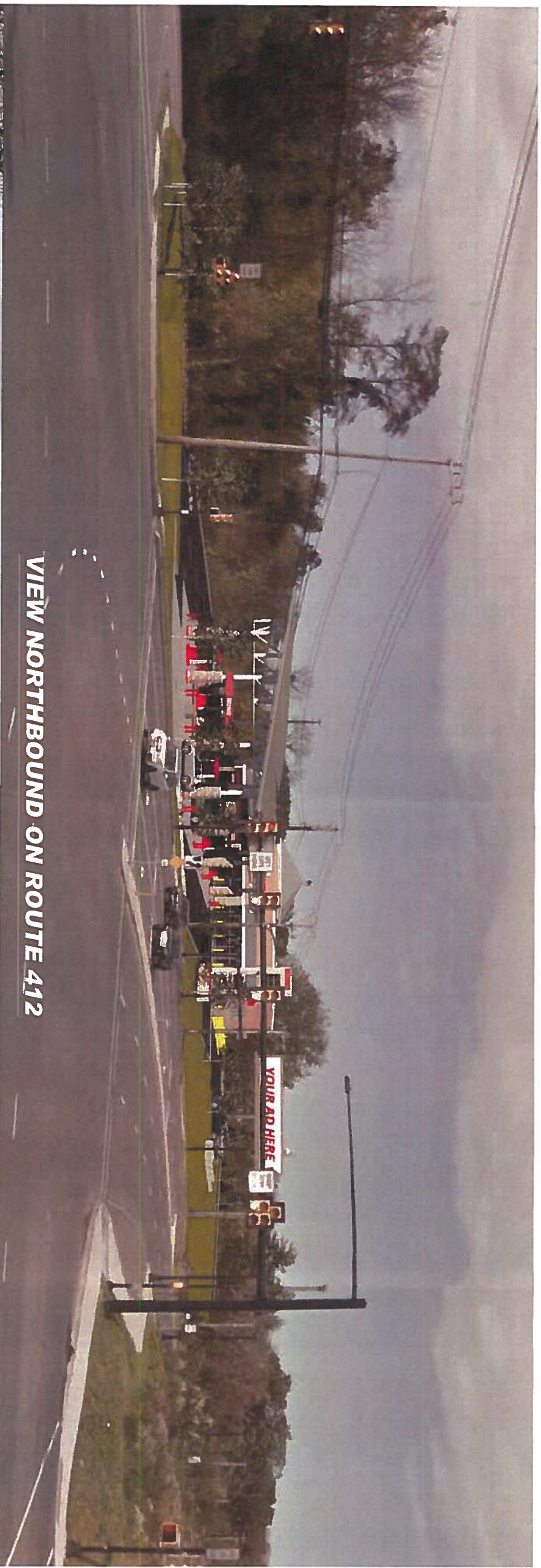
**C.J. BOCK**

PROFESSIONAL ENGINEER  
 PENNSYLVANIA LICENSE NO. PE000000000000000000  
 REGISTERED PROFESSIONAL LAND SURVEYOR  
 PENNSYLVANIA LICENSE NO. PS000000000000000000

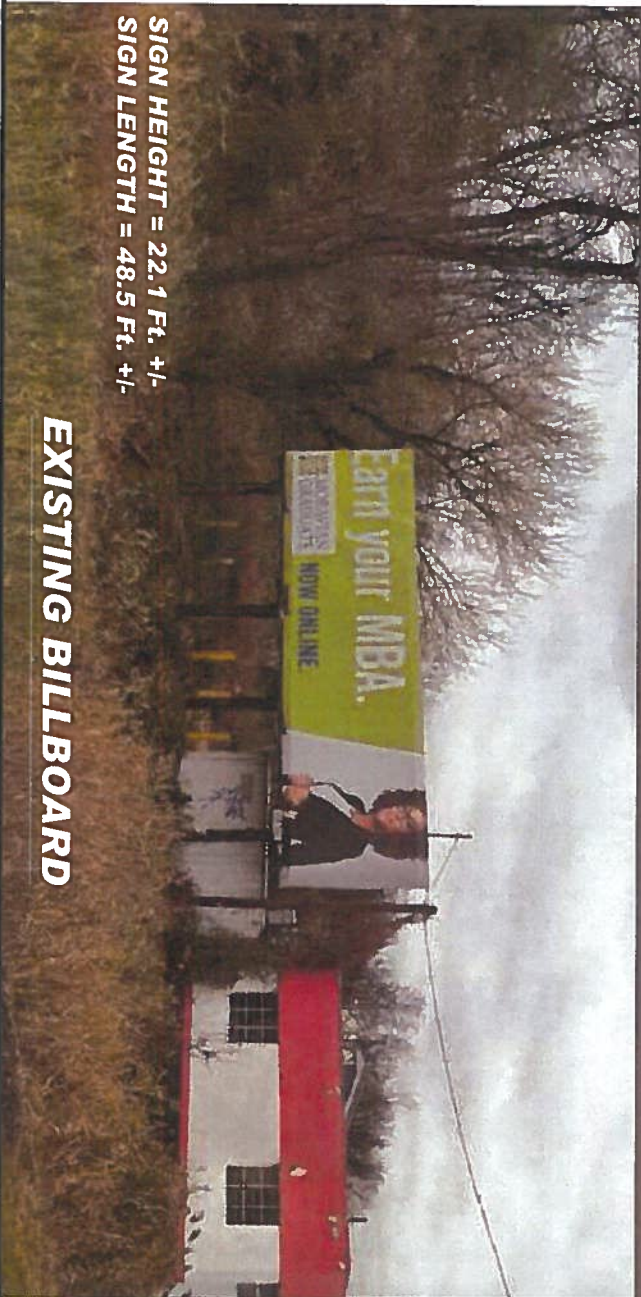
**BILLBOARD SITE PLAN**

SHEET NUMBER: 1

DATE: 08/17/2020

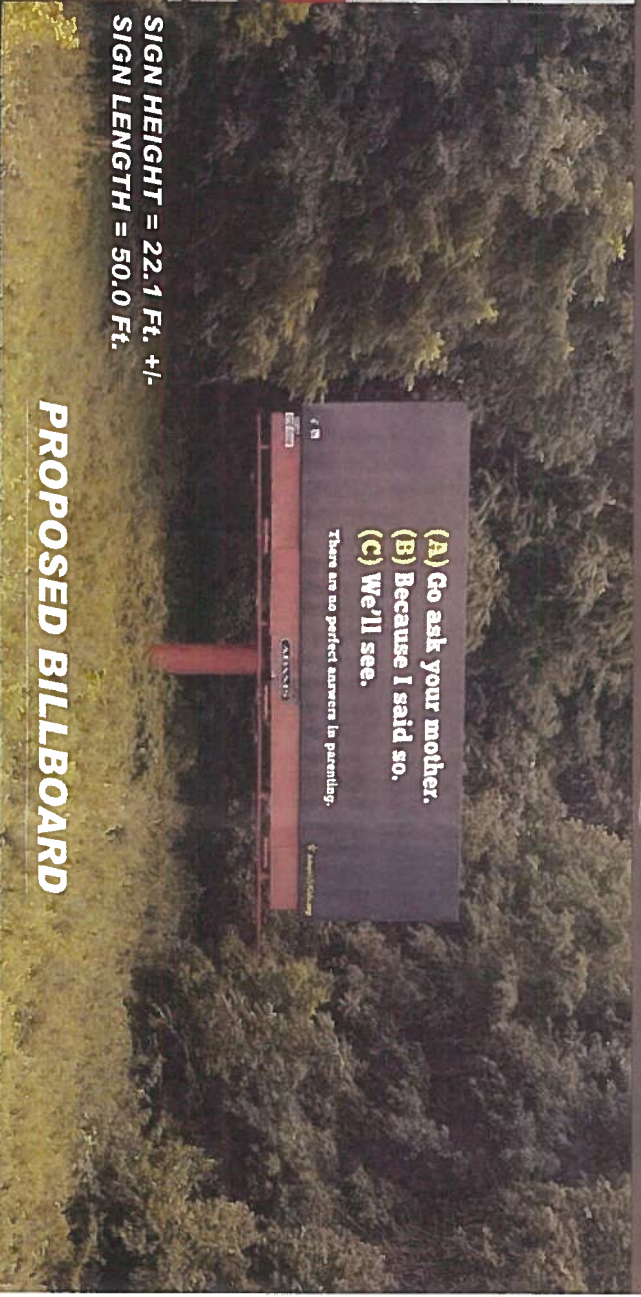


VIEW NORTHBOUND ON ROUTE 412



SIGN HEIGHT = 22.1 Ft. +/-  
SIGN LENGTH = 48.5 Ft. +/-

EXISTING BILLBOARD



SIGN HEIGHT = 22.1 Ft. +/-  
SIGN LENGTH = 50.0 Ft.

PROPOSED BILLBOARD

# BOHLER

1600 MANOR DRIVE, SUITE 200  
CHALFONT, PA 18914  
Phone (215) 996-9100  
Fax (215) 996-9102  
www.BohlerEngineering.com

## CCAN, LLC PROPOSED BILLBOARD EXHIBIT

CITY OF BETHLEHEM, LEHIGH  
COUNTY, PENNSYLVANIA



VIEW SOUTHBOUND ON ROUTE 412

8/26/2020 | D.C.V. | PCT1028 | Rev.4



1600 MANOR DRIVE, SUITE 200  
CHALEFONT, PA 18914  
Phone (215) 996-9100  
Fax (215) 996-9102  
[www.BohlerEngineering.com](http://www.BohlerEngineering.com)

**CCAN, LLC**  
**PROPOSED BILLBOARD EXHIBIT**  
CITY OF BETHLEHEM, LEHIGH  
COUNTY, PENNSYLVANIA