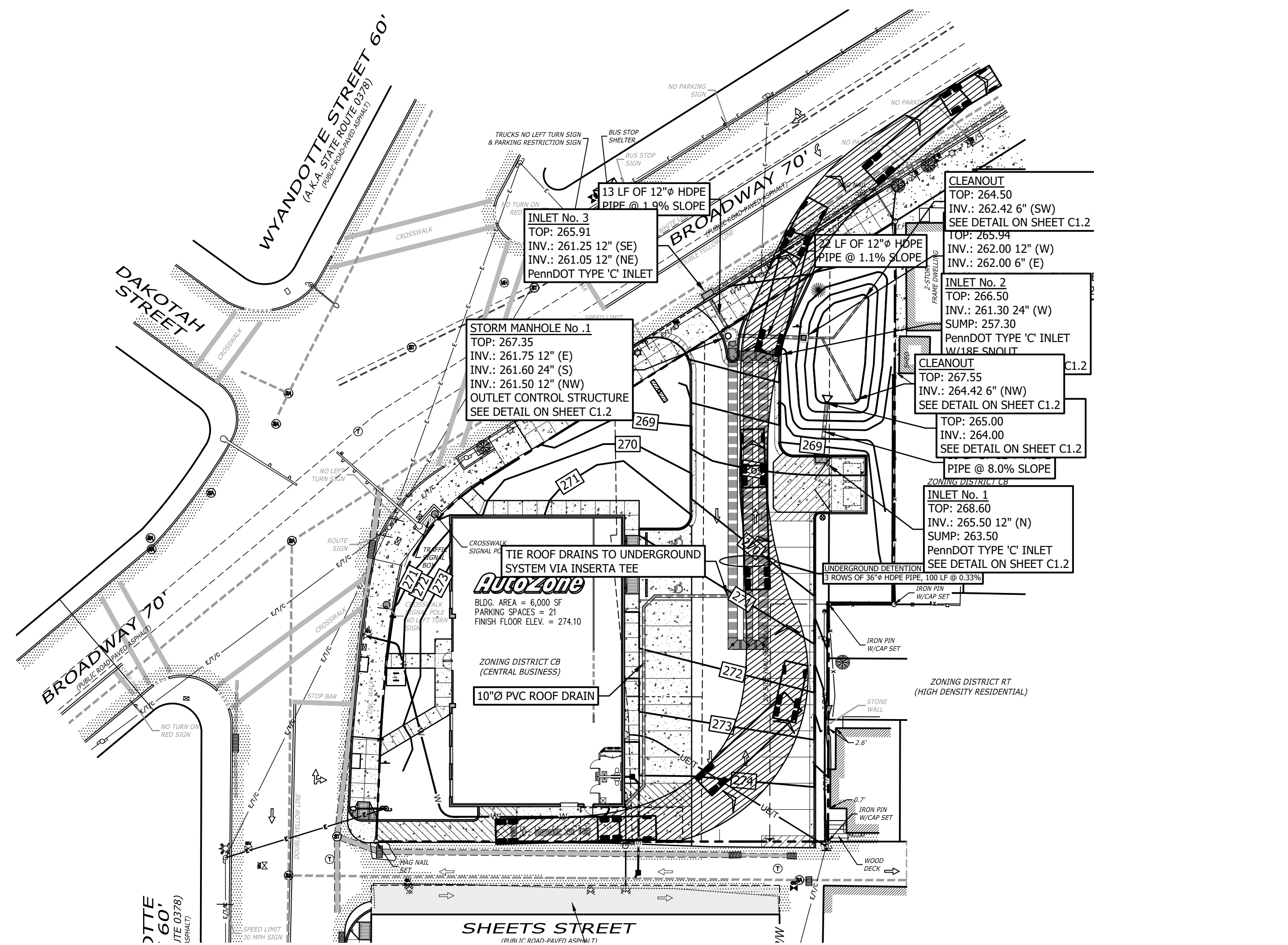


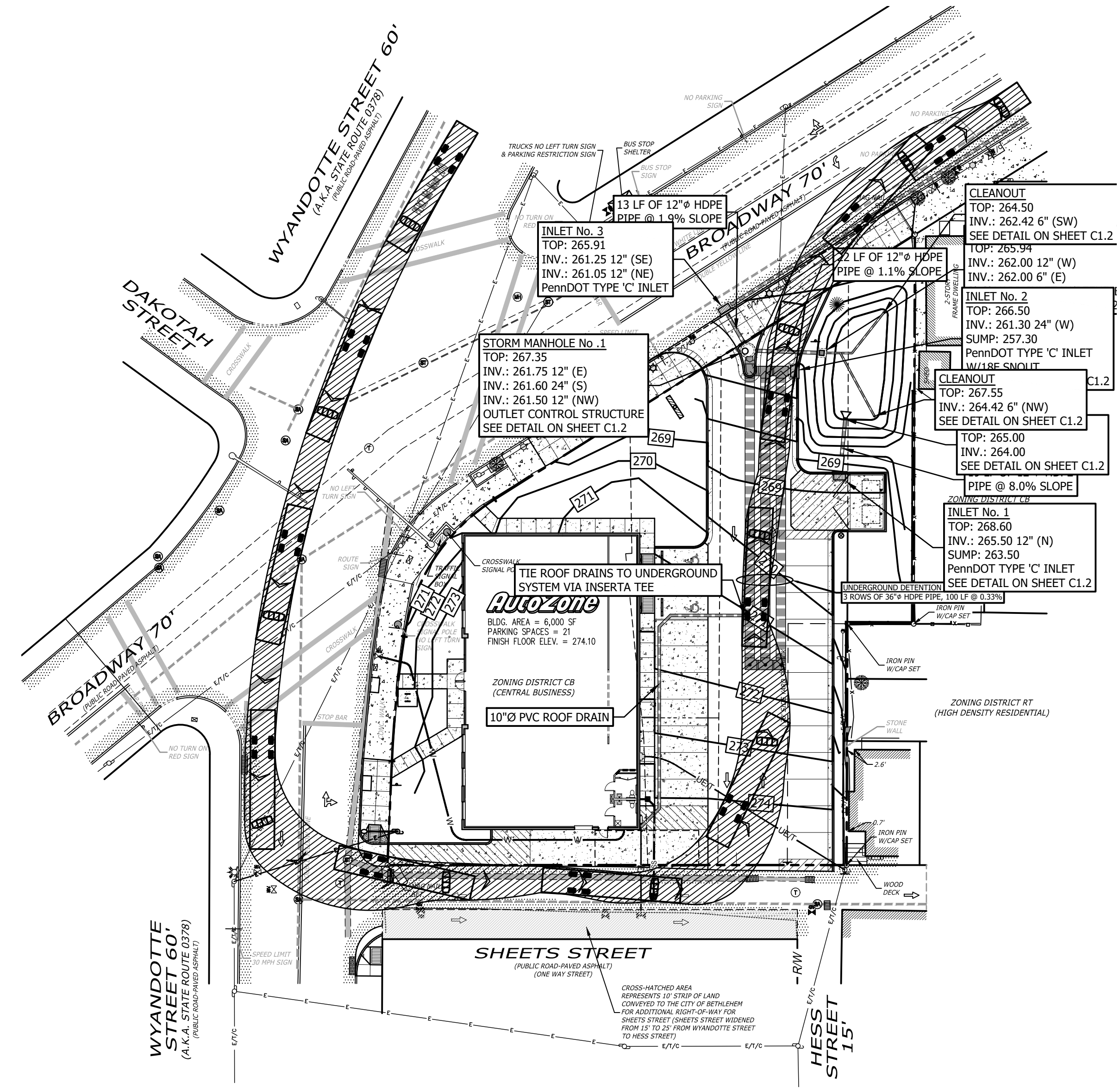
1 WB-50 TRUCK ENTRY- WYANDOTTE STREET TO SHEETS STREET

SCALE: 1" = 30'-0"



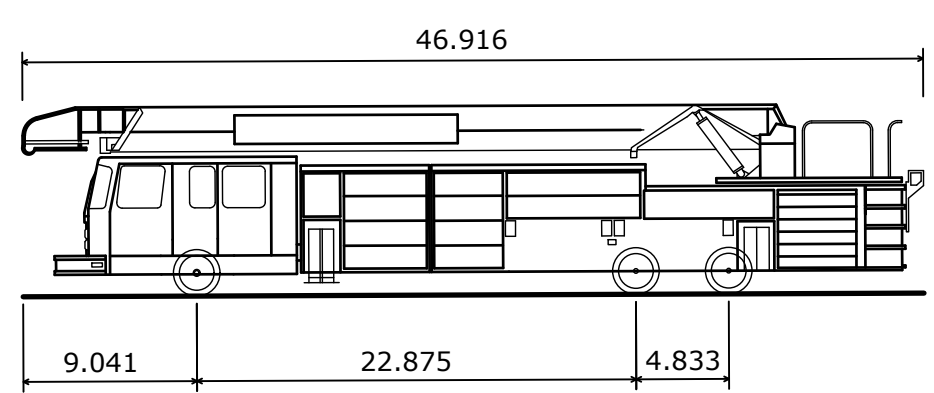
2 WB-50 TRUCK EXIT - BROADWAY (EASTBOUND)

SCALE: 1" = 30'-0"



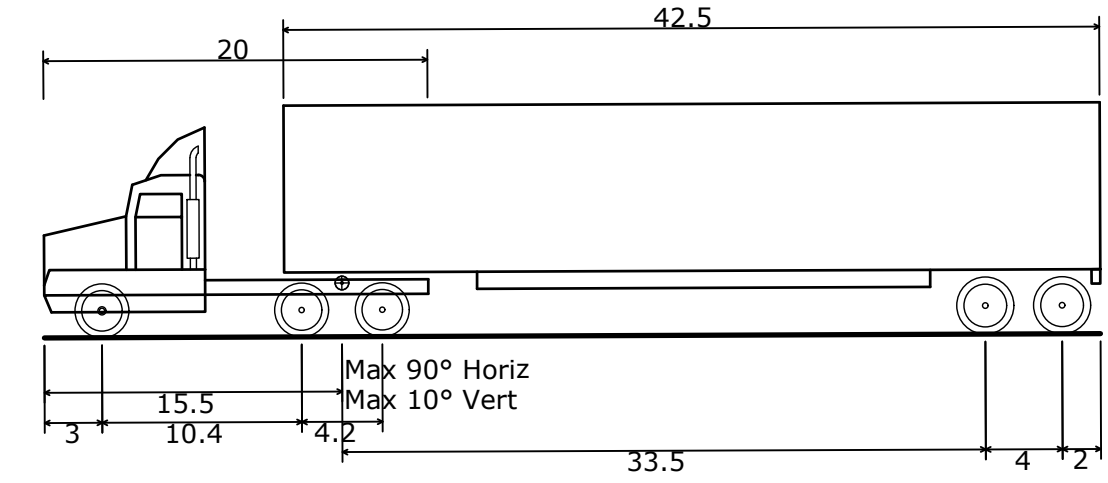
3 FIRE TRUCK ENTER & EXIT

SCALE: 1" = 30'-0"



PIERCE Mid-Mount 2010
 Overall Length 46.916ft
 Overall Width 8.250ft
 Overall Body Height 9.851ft
 Min Body Ground Clearance 0.671ft
 Track Width 6.910ft
 Lock-to-lock time 6.00s
 Curb to Curb Turning Radius 38.750ft

FIRE TRUCK TURNING SPECIFICATIONS



WB-50 - Intermediate Semi-Trailer
 Overall Length 55.000ft
 Overall Width 8.500ft
 Overall Body Height 12.052ft
 Min Body Ground Clearance 1.334ft
 Max Track Width 8.500ft
 Lock-to-lock time 6.00s
 Max Steering Angle (Virtual) 17.90°

WB-50 TRUCK TURNING SPECIFICATIONS

4 TRUCK TURNING PROFILES

NOT TO SCALE

Owner / Developer: **AZ Bethlehem, LLC**
 P.O. BOX 1908
 MEDIA, PA 19063

PREPARED FOR: **AutoZone**
 Store No.: 1400
 WYANDOTTE STREET & BROADWAY
 CITY OF BETHLEHEM, COUNTY OF NORTHAMPTON
 COMMONWEALTH OF PENNSYLVANIA

TRUCK TURNING PLAN

SCALE: AS SHOWN

REVISIONS	
1.	
2.	
3.	
4.	
5.	
6.	
7.	

ARCHITECT: LE
 DRAFTSMAN: CWT
 CHECKED BY: CAD
 DATE: 10-23-2020
 PROTOTYPE SIZE: 6w2

TR1.0