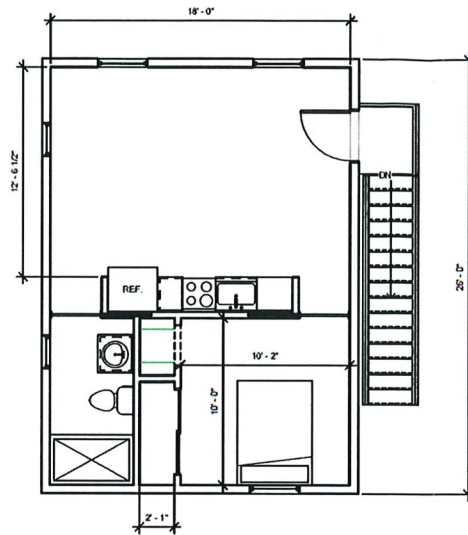
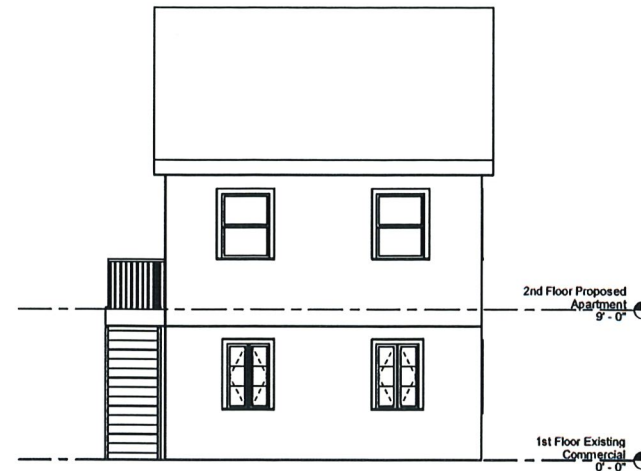


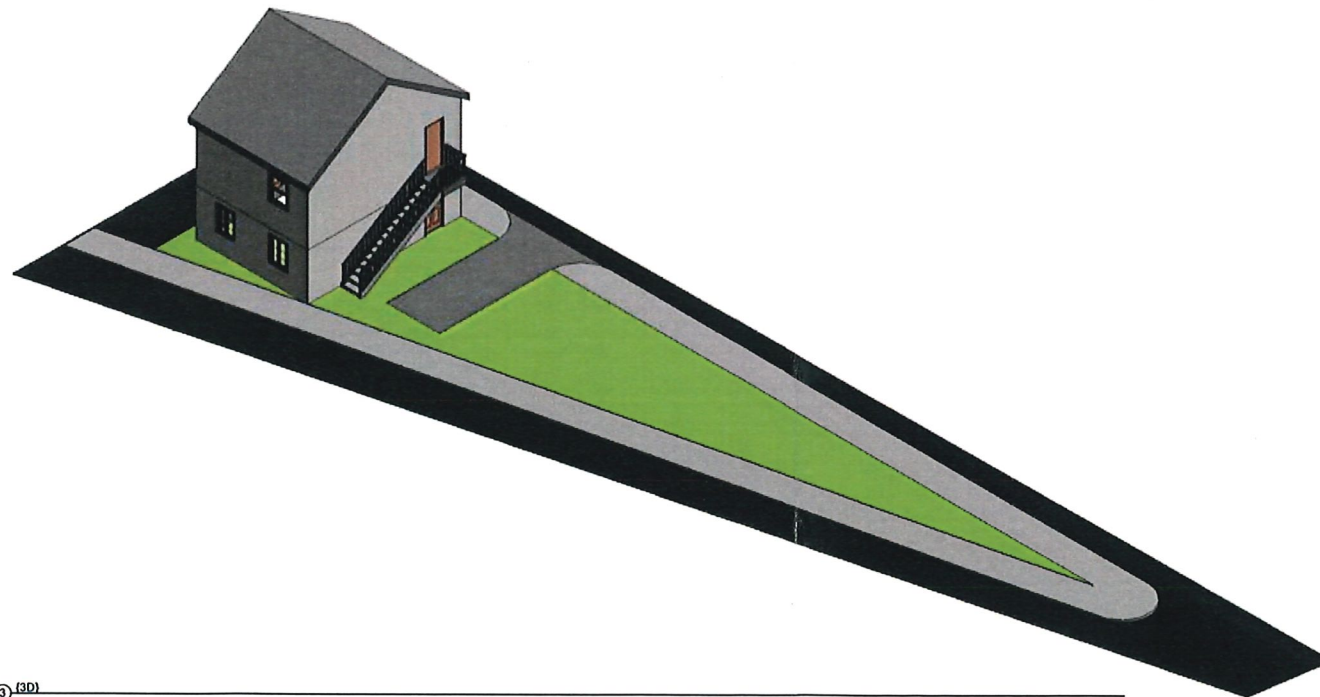
② 1st Floor Existing Commercial
1/4" = 1'-0"



① 2nd Floor Proposed Apartment
1/4" = 1'-0"

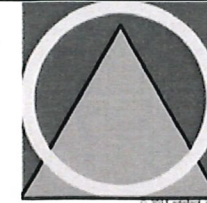


④ North Elevation
1/4" = 1'-0"



③ (3D)

02/22/21 1:35:05 PM
 C:\Users\kussler\OneDrive\1018 E 3rd\1018 E 3rd_bldg.rvt



Artefact, Inc.

CHRISTINE USSLER, AIA
 26 28 EAST THIRD STREET
 BETHLEHEM, PA 18015
 610 851 0235 PHONE
 610 851 9772 FAX

www.artefactarchitecture.com

Architecture |
 Sustainable Design |
 Preservation and Planning |



**Ruggonz LLC 1018 E
 3rd**

1018 E 3rd St, Bethlehem, PA 18015

CLIENT
 Owner

SCALE & SIGNATURE

ISSUE

NOT FOR CONSTRUCTION

TITLE
 Ruggonz LLC 1018 E 3rd

Project Status
 ISSUE DATE 9/22/21
 SCALE 1/4" = 1'-0"
 DRAWN BY Kyle
 CHECKED BY Checker

A101