



E R E C T E D M C M X X

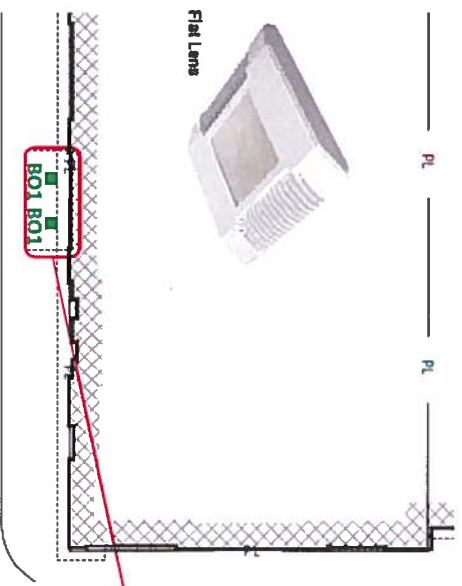
Bank of America





Google

Bank Of America – PA7-108 – 29 East Third St, Bethlehem, PA– Mark Up



Replace existing canopy fixtures with BO1 canopy fixture. Fixture finish is specified as White.

	2	BO1	SINGLE	2	-	(BO) CPY250-A-DM-F-20W-UL-WH-4QK / CANOPY MOUNT / CREE
---	---	-----	--------	---	---	--



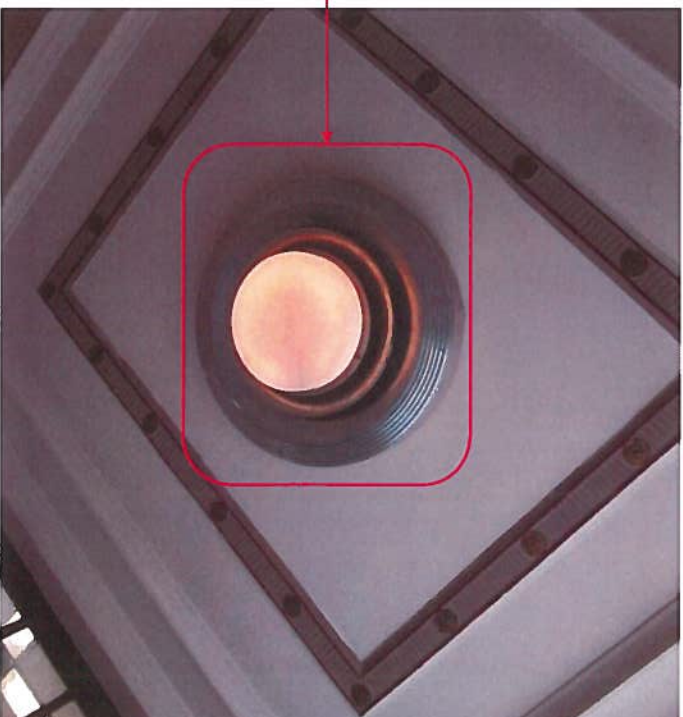
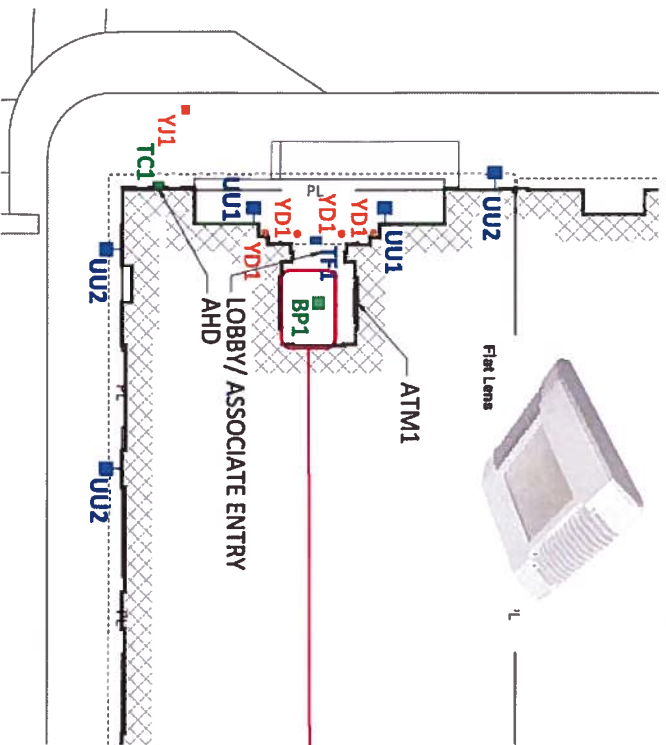
© GMR 2019





Accessible
Entrance
←

Bank Of America – PA7-108 – 29 East Third St, Bethlehem, PA– Mark Up



Replace existing canopy fixture with BP1 canopy fixture. Fixture finish is specified as White.

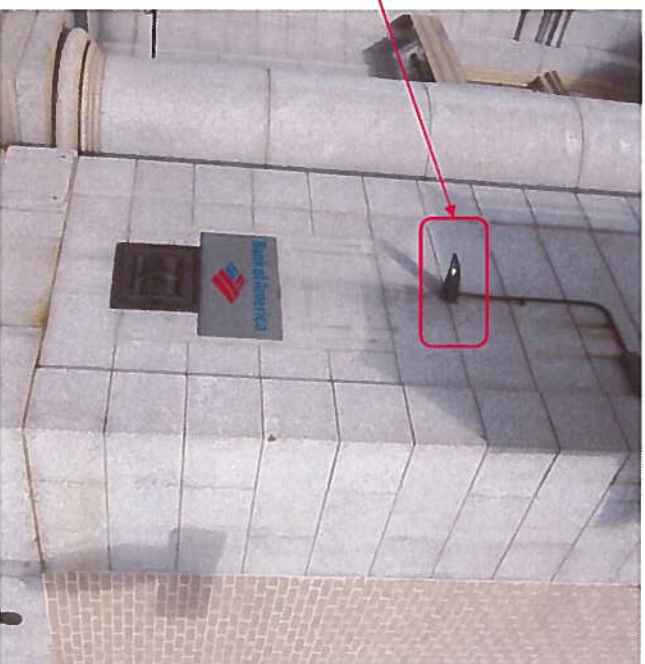
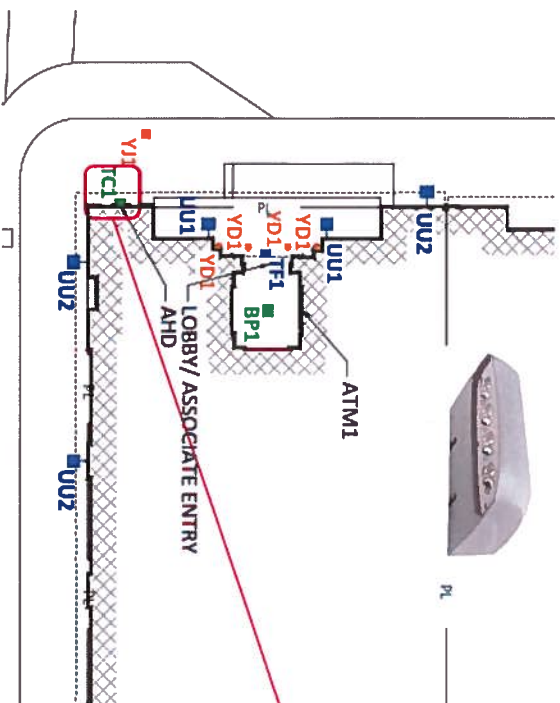
	1	BP1	SINGLE	1	-	(BP) CP7250-B-DM-F-A-UL-WH-40K / CANOPY MOUNT / CREE
---	---	-----	--------	---	---	--



© GMR 2019



Bank Of America – PA7-108 – 29 East Third St, Bethlehem, PA– Mark Up



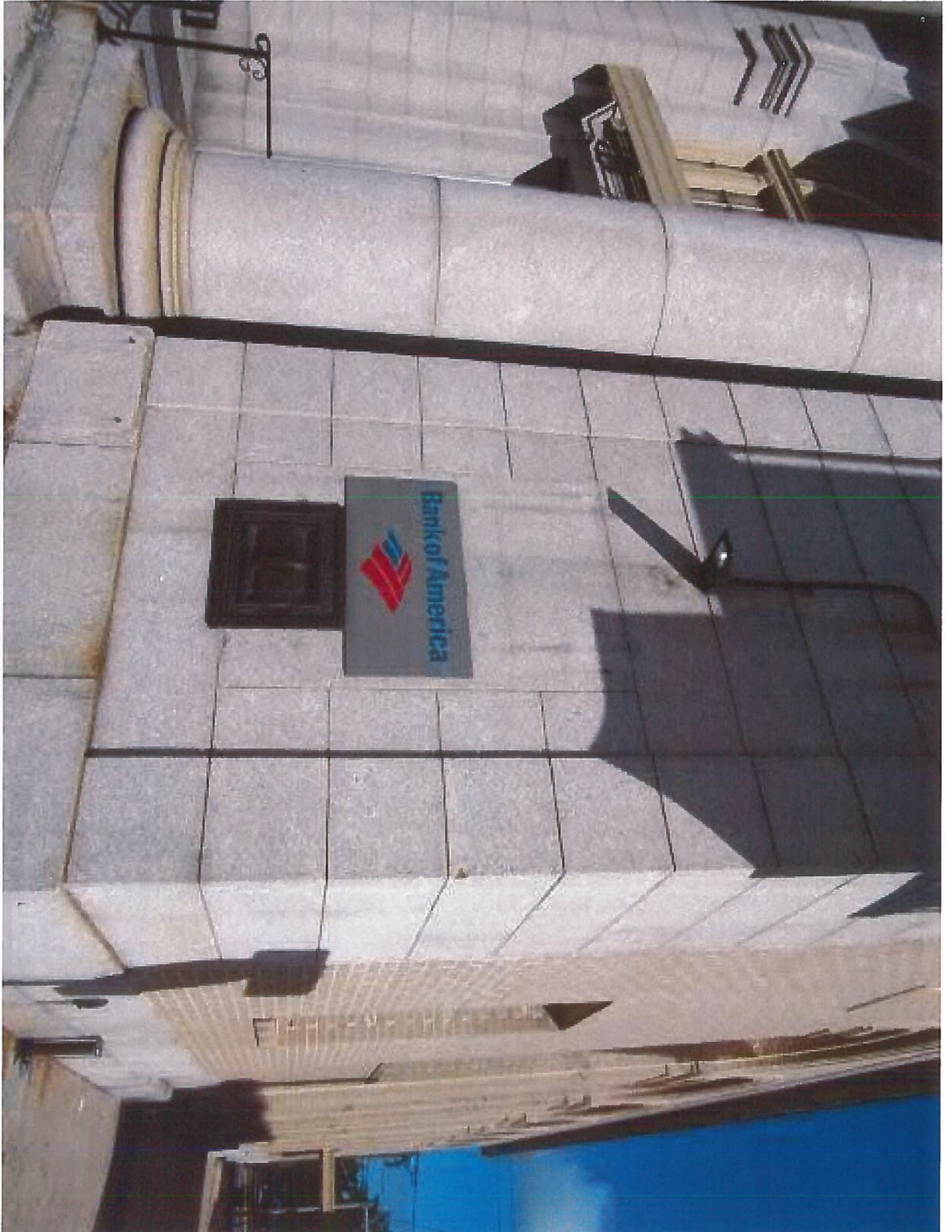
Replace existing wall fixture with TC1 wall fixture. Fixture finish is specified as Bronze.

1	TC1	SINGLE	1	(TC) XSPW-B-WM-2ME-6L-40K-UI-8Z / WALL MOUNT / CREE
---	-----	--------	---	---

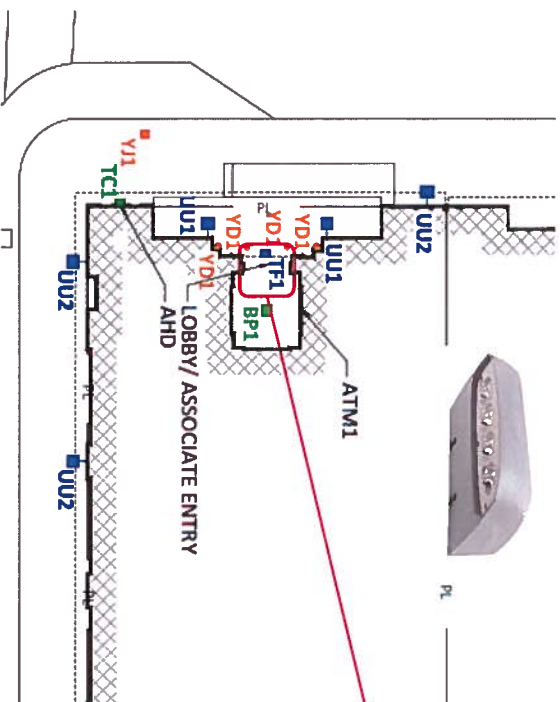


© GMR 2019





Bank Of America – PA7-108 – 29 East Third St, Bethlehem, PA– Mark Up



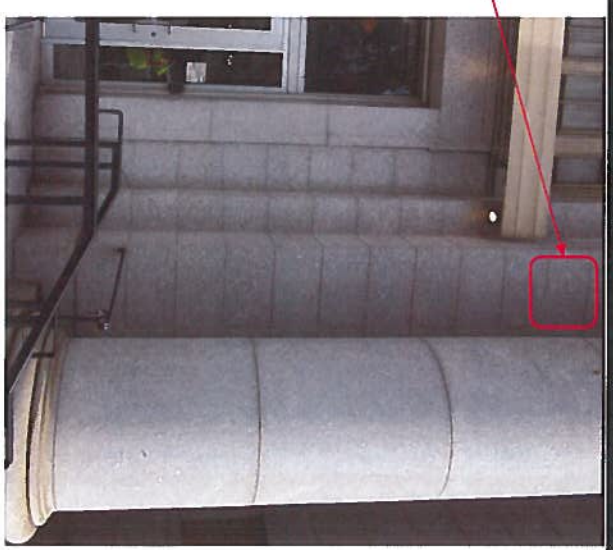
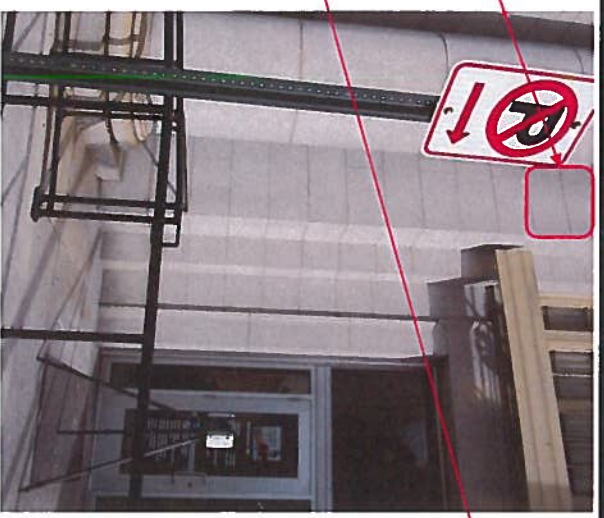
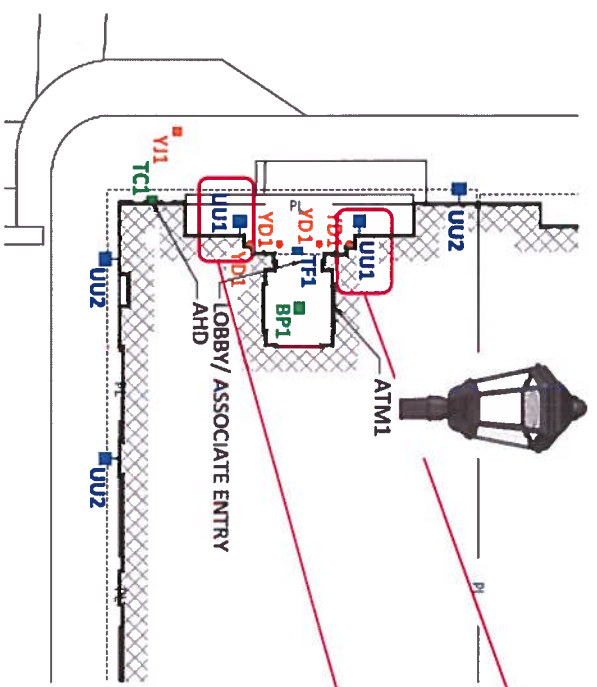
Add new TF1 wall fixture at 11'-9" above finished grade. Fixture finish is specified as Bronze.

1	TF1	SINGLE	1	-	(TF) XSPW-B-WM-3ME-4L-40K-UL-8Z / WALL MOUNT / CREE
---	-----	--------	---	---	---





Bank Of America – PA7-108 – 29 East Third St, Bethlehem, PA– Mark Up



Add new U01 wall fixture at 15' above finished grade. Fixture finish is specified as Dark Bronze.

2	U01	SINGLE	2	ALM440-13-32LED-4K-700-DB-WMA3 / WALL MOUNT / ARCHITECTURAL AREA LIGHTING
---	-----	--------	---	---

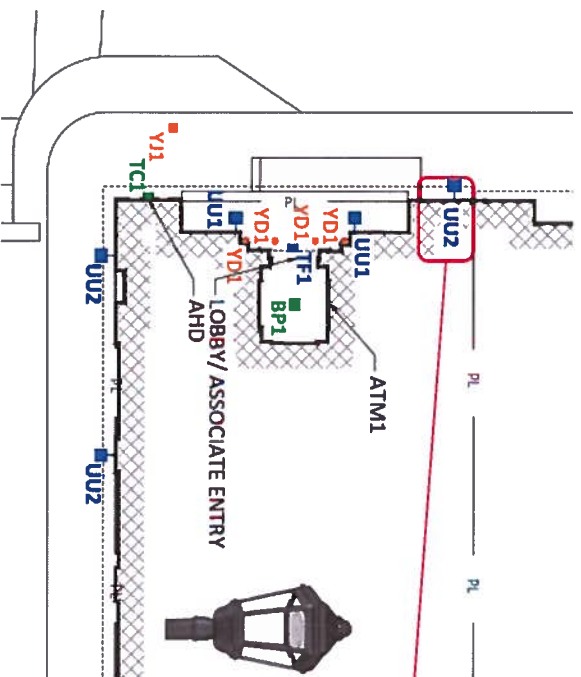


© GMR 2019






Bank Of America – PA7-108 – 29 East Third St, Bethlehem, PA– Mark Up



Add new UU2 wall fixture at 9' above finished grade. Fixture finish is specified as Dark Bronze.

	3	UU2	SINGLE	3	-	ALM440-Y2-32LED-4K-700-DB-WMAA3 / WALL MOUNT / ARCHITECTURAL AREA LIGHTING
---	---	-----	--------	---	---	--

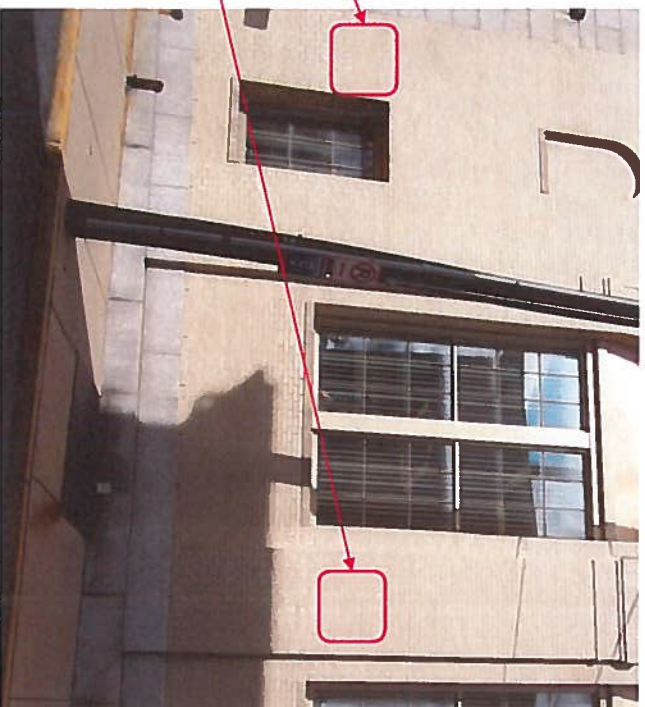
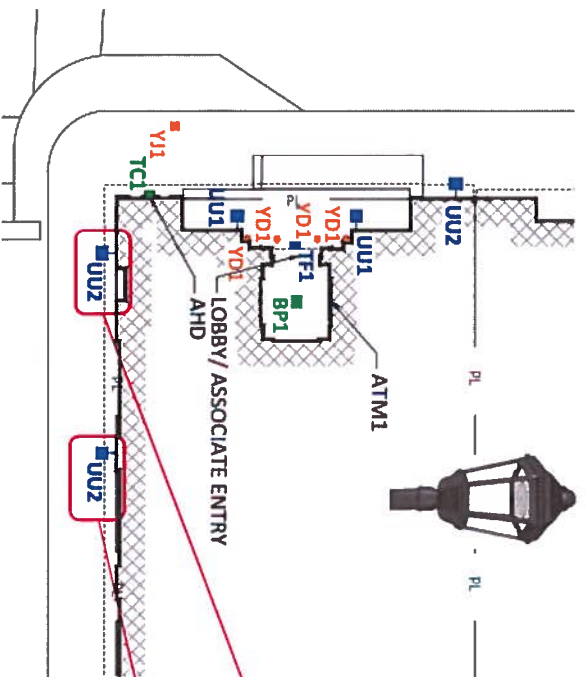


© GMR 2019





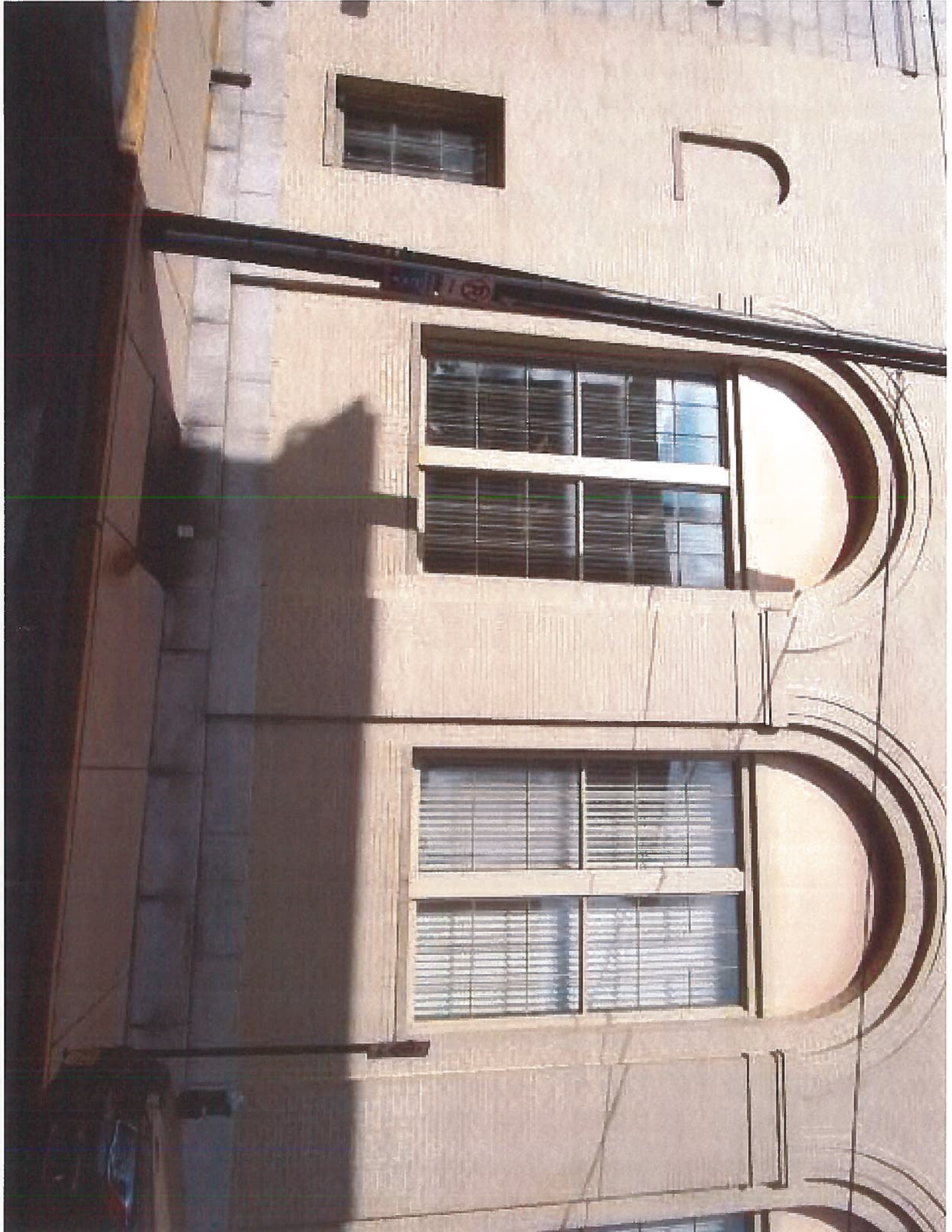
Bank Of America – PA7-108 – 29 East Third St, Bethlehem, PA– Mark Up



Add new UU2 wall fixture at 9' above finished grade. Fixture finish is specified as Dark Bronze.

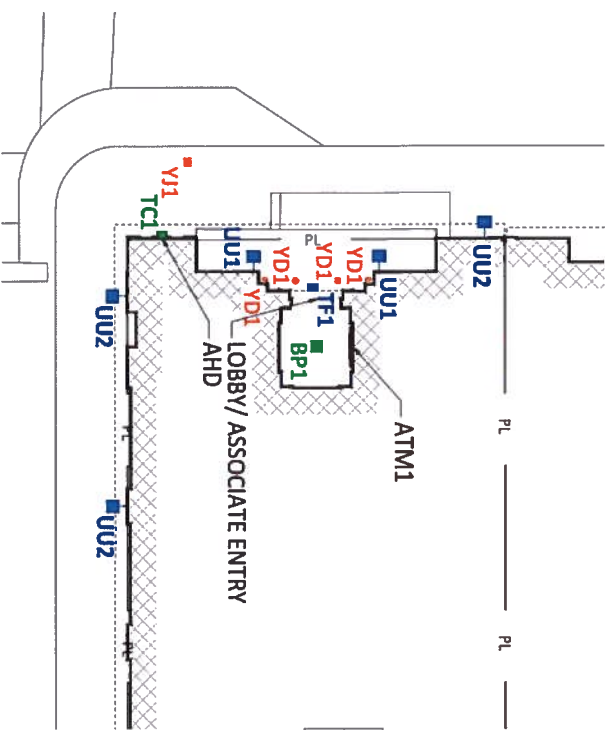
3	UU2	SINGLE	3	-	ALMA40-Y2-32LED-4K-700-DB-WMA3 / WALL MOUNT / ARCHITECTURAL AREA LIGHTING
---	-----	--------	---	---	---







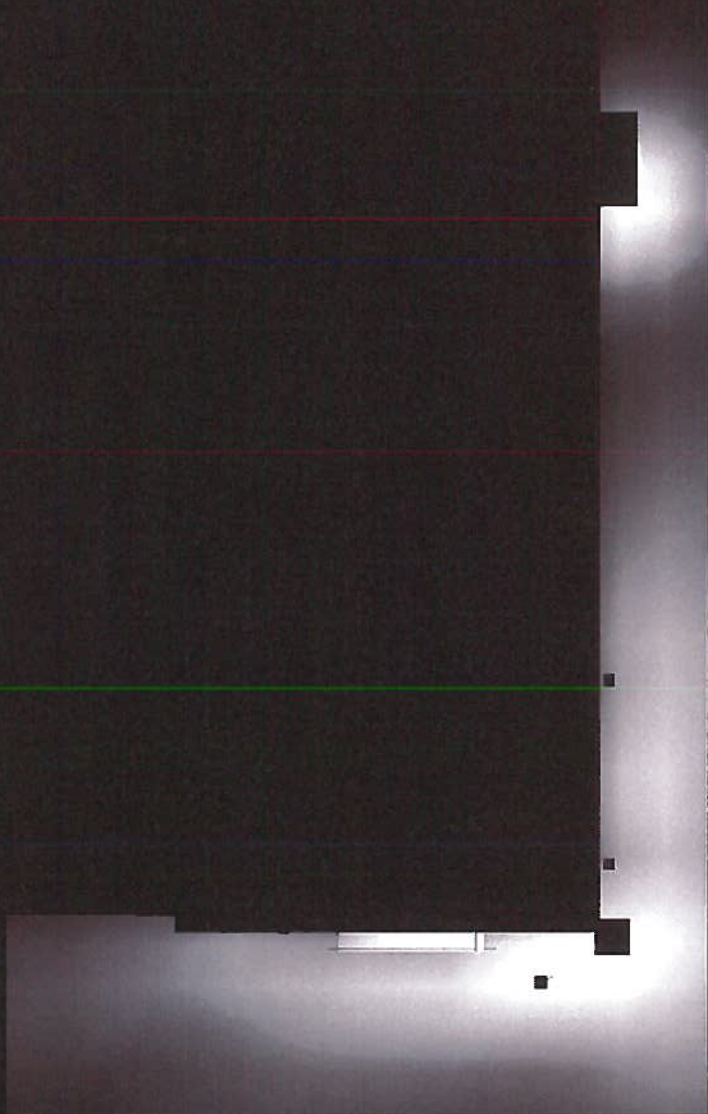
Bank Of America – PA7-108 – 29 East Third St, Bethlehem, PA– Mark Up

All Y fixtures to be left out of scope.

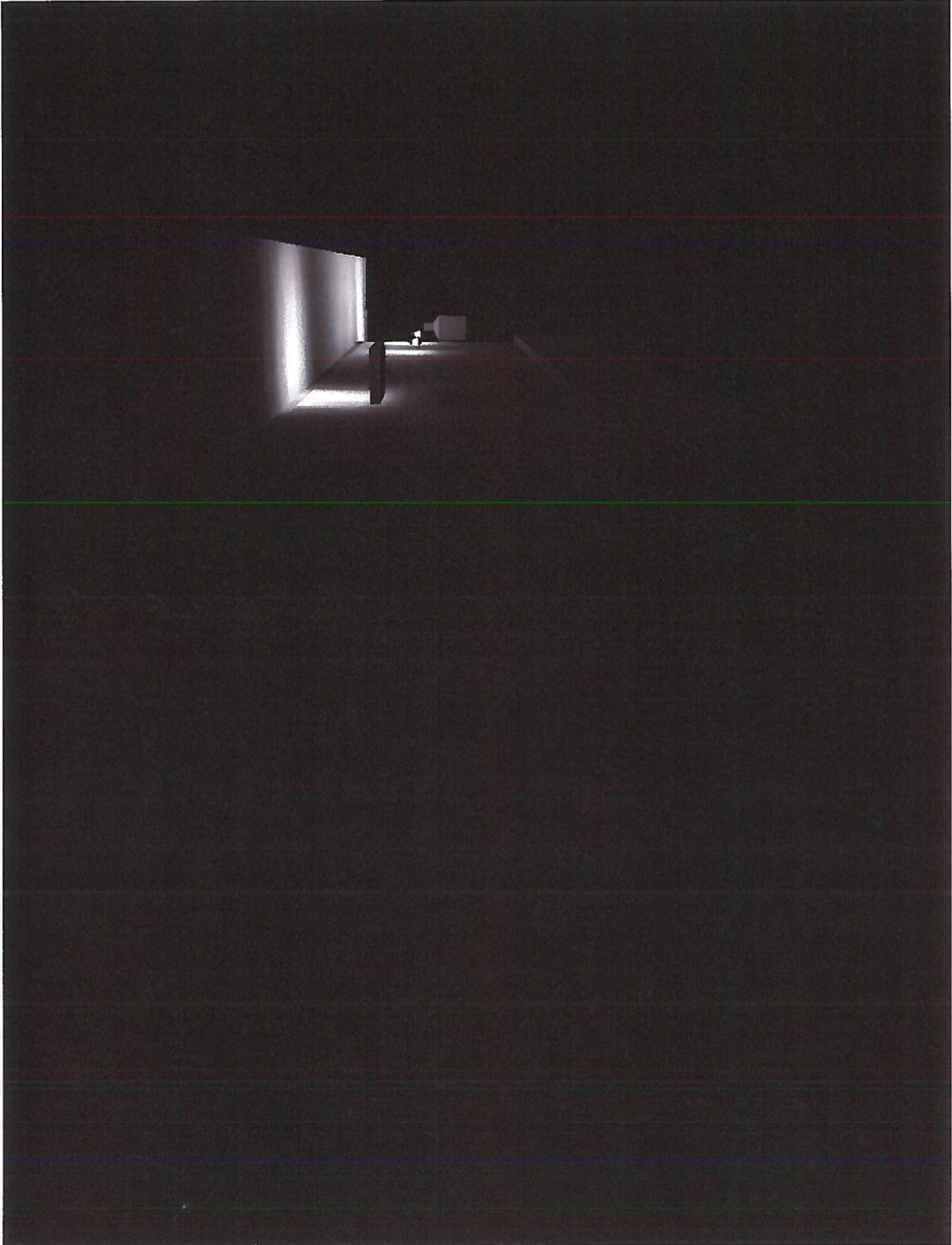


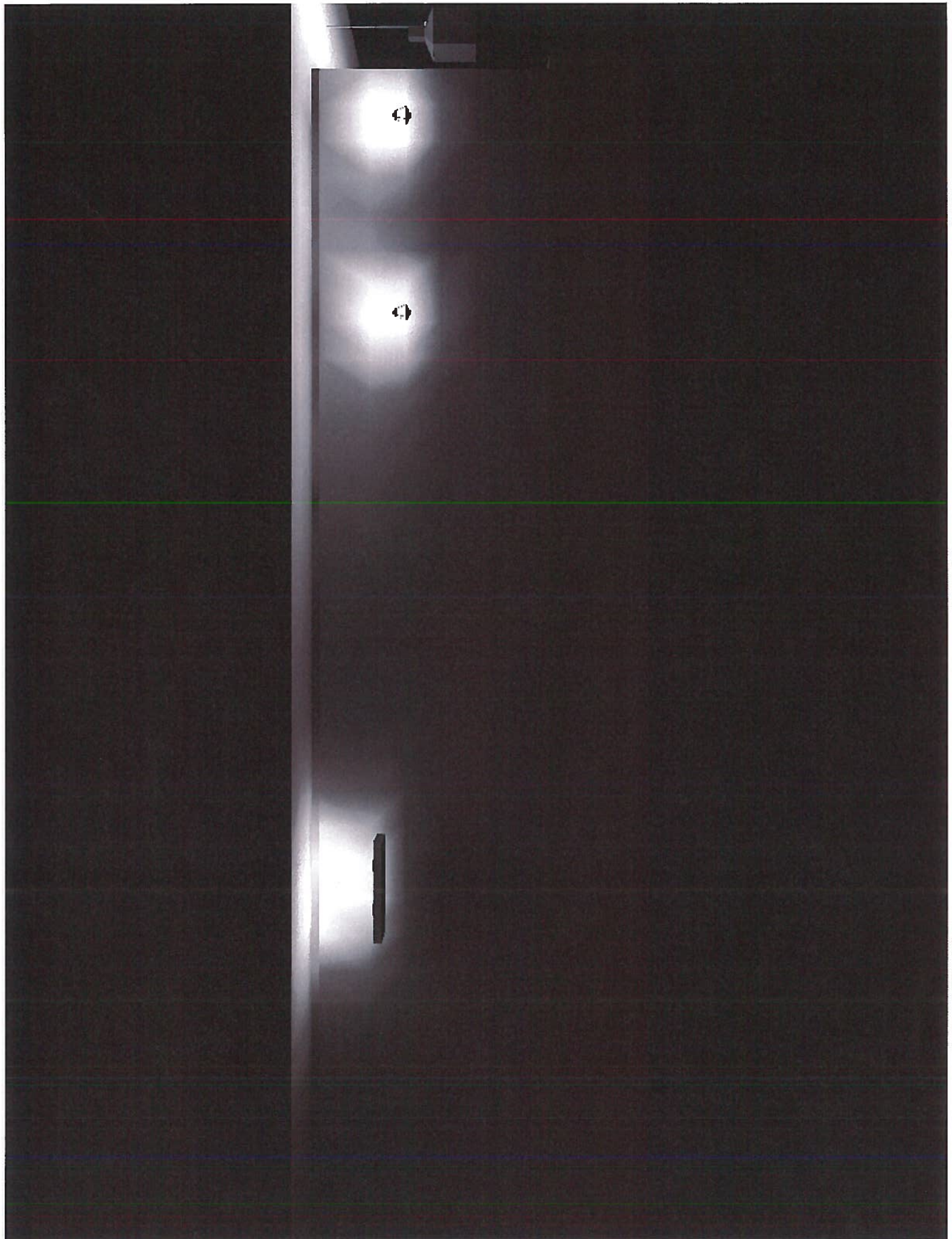
	4	YD1	SINGLE	4	-	EXISTING CANOPY FIXTURE
	1	YJ1	SINGLE	1	-	EXISTING DECORATIVE POLE FIXTURE













ALN440 – Towne Commons® LED | TYPE **GC TO VERIFY ALL INFORMATION BELOW**



ALN440

- Energy Saving LED technology
- Reliable efficient operation
- Type 2, 3, 4, 5 distributions
- 0-10V dimming ready
- LifeShield® protection system
- Surge protection included
- Wide variety of custom mounting options including post-top, wall mount or pole mount arm
- IP66 construction of optical system
- Cast aluminum struts
- DLC pending
- Available in 3000K, 4000K and 5000K
- Powder coat finish in 13 standard colors with polymer sealer

1. LUMINAIRE ALN 440	2. DISTRIBUTION Y3	3. COLOR TEMP 32LED-4K	4. DRIVER 700	5. COLOR BL	6. OPTIONS	7. CONTROL	8. MOUNTING WMA3
-------------------------	------------------------------	----------------------------------	-------------------------	-----------------------	------------	------------	----------------------------

1. LUMINAIRE

ARM OR POST TOP MOUNT

ALN 440

TOP MOUNTED ARM OR PENDANT MOUNT

ALN 440D

2. DISTRIBUTION

Y2 (Type 2)

Y3 (Type 3)

Y4 (Type 4)

Y5 (Type 5)

3. COLOR TEMPERATURE

32LED-3K (Warm White, 3000K output)

32LED-4K (Neutral White, 4000K output)

32LED-5K (Bright White, 5000K output)

4. DRIVER (120 thru 277 volt)

700 (700mA drive current, 75 watts)

5. COLOR

WH Arctic White	VBU Verde Blue
BL Black	CRT Corten
BLT Matte Black	MAL Matte Aluminum
DB Dark Bronze	MG Medium Grey
DGN Dark Green	AGN Antique Green
TT Titanium	LG Light Grey
WDB Weathered Bronze	RAL Premium Color
MDB Bronze Metallic	CUSTOM * * Contact Factory

6. OPTIONS

CHM (Glass chimney with polished brass holder)

CND (3-lamp candelabra with polished brass holder, lamps included. For decorative use only)

LDL (Lightly diffused lens)

SBL (Sandblast diffused lens)

HSS-L (House side shield, consists of three field installed panels attached to the inside of the lens. Installing three panels blocks 180° of the lens)

MAT (Mast arm adapter slips over a 2 3/8" / 60mm O.D. pipe and is secured with 4 stainless steel set screws. For ALN440D only.)

PMS (Pendant mount with 48" / 1220mm stem and canopy with swivel. For ALN440D only.)

PMC (Pendant kit includes canopy and 48" / 1220mm of brass chain painted the fixture color. For ALN440D only.)

PT5 (Post top adaptor for a 5" / 127mm O.D. pole)

7. CONTROL

PCA-C (Contemporary photocell adapter, not for Wall Mount)

PCA-T (Traditional photocell adapter, not for Wall Mount)

SCP (Sensor Control Programmable) pole accessory is available to provide occupancy detection for outdoor applications meeting California Title 24. For complete spec sheet and ordering information, visit www.aal.net/products/sensor_control_programmable/

8. MOUNTING

WALL MOUNT

ALN440

WMA1M	WMA1L	WMA3	WMA35U
WMA36U	WMA55	WMA56	WMA57
WMA7	WMA9U	WMA22U	

ALN440D

WMA2M	WMA2L	WMA37	WMA38
WMA39	WMA4	WMA6	WMA8
WMA9D	WMA10	WMA11	WMA12
WMA16	WMA17	WMA18	WMA22D

POLE MOUNT

Post Top Mount: (Standard)

The fixture shall slip over a 4"/100mm O.D. pole or tenon and be secured to the pole with three (or six) stainless steel set screws.

Pole Side Mount (4" O.D. or 5" O.D. side mount)

ALN440

TRA1M	TRA3	TRA5U	TRA55
TRA56 (4" only)	TRA57	TRA59U	SLA8U
SLA22U			

ALN440D

TRA2M	TRA2L	SLA3 (4" only)	SLA8D
SLA22D			

Pole Top Mount Arm

ALN440

SLA1	SLA1-2
------	--------

ALN440D

TRA4	TRA7	TRA7-2	TRA8
TRA9	TRA9-2	SLA4	SLA4-2
SLA7	SLA7-2	SLA9	SLA9-2
SLA10	SLA10-2	SLA16	SLA16-2
SLA17	SLA17-2	SLA18	SLA18-2

PIER MOUNT

PM1	PM2	PM3
-----	-----	-----

Visit www.aal.net for Arms, Poles & Accessories Specification Guide

SPECIFICATIONS

HOUSING

Luminaire shall be cast A356 alloy aluminum, free of any porosity or cosmetic fillers. Castings shall be of uniform wall thickness, minimum .188 inch with no warping or mold shifting.

The top cap shall hinge open by loosening two captive fasteners. The top shall seal the lamp compartment with a continuous silicone gasket. The lens shall be one-piece clear optical grade acrylic with a one-piece memory retentive silicone gasket on top and bottom. The LED and driver assembly shall be serviceable by backing out three thumb screws to allow for the light engine to be lifted out. Quick disconnects shall be used for all electrical connections.

All internal and external hardware shall be stainless steel.

OPTICAL MODULE

The optical assembly shall be completely sealed with a one piece injection molded silicone gasket to prevent dust, insect or moisture contamination. The optical array shall consist of high brightness light emitting diodes mounted to a printed metal circuit board with precision injection molded optically clear lenses discretely coupled to each individual diode. The printed circuit board assembly shall have a uniform conformal coating with the exception of the optical output lens at each diode and be mechanically fastened to an anodized die-cast aluminum heat sink. Standard color temperatures shall be 3000K, 4000K and 5000K.

ELECTRICAL

All Luminaires shall accept 120 thru 277 volt input and have integral surge protection. Drivers shall be U.L. recognized and have a 0-10v dimming interface with a dimming range of 10-100%. Approved dimmers include Lutron Diva AVTV, Lutron Nova NFTV and NTFTV. (Note: not compatible with current sourcing dimmers). Consult factory for current list of known compatible dimming systems. LifeShield™ shall be provided with all configurations for added protection in extreme temperature environments (-30°C to 60°C). The electrical assembly shall be mounted to a serviceable tray. The surge protector shall be U.L. recognized and have a surge current rating of 10,000 Amps using the industry standard 8/20uSec wave with a clamping voltage of 320V and surge rating of 372J.

See next page

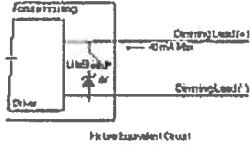
JOB	_____
TYPE	_____
NOTES	_____



ALN440 – Towne Commons® LED | TYPE

The surge protector case shall be a high-temperature, flame resistant plastic enclosure. The electrical assembly shall be installed and prewired in the fixture.

CONTROLS



SCP shall have an integral surge protection device with a current rating of 10,000 Amps using the industry standard 8/20uSec wave and surge rating of 372J

Sensor not intended for use with additional photo-control, wireless control or dimming systems.

SERVICING

The top of the fixture shall hinge open for relamping by loosening two stainless steel fasteners.

MOUNTING

Post top mounting: The fixture shall slip over a 4"/100mm O.D. pole or tenon and be secured to the pole with three (or six) stainless steel set screws.

Arm or wall mounting: The fixture shall be attached to the cast arm with three stainless steel bolts and a silicone gasket.

FINISH

Fixture finish shall consist of a five stage pretreatment regimen with a polymer primer sealer, oven dry off and top coated with a thermoset super TGIC polyester powder coat finish. The finish shall meet the AAMA 2604-02 performance specification which includes passing a 3000 hour salt spray test for corrosion resistance.

CERTIFICATION

Fixtures shall be listed with ETL for outdoor, wet location use, conforming to the UL 1598 and Canadian CSA 22.2 no. 250 standard. IP54.

WARRANTY / TERMS AND CONDITIONS OF SALE

Download:

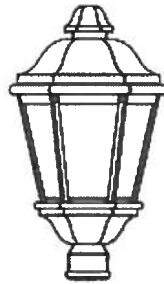
<http://www.hubbelling.com/resources/warranty/>

AAL reserves the right to change product specifications without notice.

PROJECTED LUMEN MAINTENANCE

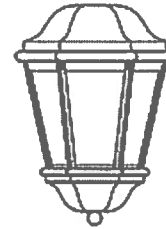
AMBIENT TEMP.	0	25,000	50,000	*TM-21-11 60,000	100,000	PROJECTED L70 (HRS)
25°C/ 77°F	100%	95%	93%	92%	89%	>60,000
40°C/ 104°F	100%	94%	91%	90%	85%	>60,000

DIMENSIONS



ALN440

ALN440
HEIGHT: 31"/790mm
LENGTH: 18"/460mm
WIDTH: 18"/460mm
WEIGHT: 40 lbs.
EPA: 2.80



ALN440D

ALN440D
HEIGHT: 26"/660mm
LENGTH: 18"/460mm
WIDTH: 18"/460mm
WEIGHT: 35 lbs.
EPA: 2.59

PERFORMANCE DATA (32 LEDS, 700 MA DRIVE CURRENT, 75 WATTS)

TYPE	LENS	5K					4K					3K				
		LUMENS	LPW	B	U	G	LUMENS	LPW	B	U	G	LUMENS	LPW	B	U	G
Y2	CLEAR	5427	72	2	3	3	5156	69	2	2	3	4016	54	1	3	2
Y3		5237	70	2	3	2	4975	66	2	3	2	3875	52	1	3	2
Y4		5736	76	1	3	3	5449	73	1	3	3	4245	57	1	3	2
Y5		5183	69	3	3	3	4945	66	3	3	2	3809	51	2	3	2
Y2	LDL	5160	69	2	4	3	4902	65	2	4	3	3818	51	1	3	3
Y3		4964	66	1	4	3	4716	63	1	4	3	3674	49	1	3	3
Y4		5449	73	1	4	3	5176	69	1	4	3	4032	54	1	4	3
Y5		4901	65	2	4	3	4685	62	2	4	3	3610	48	2	3	3
Y2	SBL	4729	63	2	4	3	4492	60	1	4	3	3499	47	1	4	3
Y3		4554	61	1	4	3	4327	58	1	4	3	3370	45	1	4	2
Y4		5004	67	1	4	3	4754	63	1	4	3	3703	49	1	4	3
Y5		4499	60	2	4	3	4292	57	2	4	3	3310	44	1	4	2

ALN440-Y3-32LED-5K-700 WATTAGE: 75 LUMEN OUTPUT: 5237

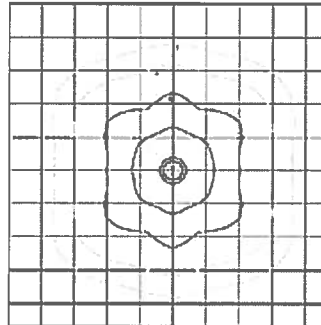
EFFICACY: 70 Lm/W

B2 U3 G2

FORWARD LIGHT		LUMEN	
FL	30°	2.4%	124.3
FM	60°	34.5%	1804.4
FH	80°	29.1%	1523.6
FVH	90°	3.1%	163.2

BACK LIGHT		LUMEN	
BL	30°	1.7%	90.7
BM	60°	12.1%	631.5
BH	80°	11.1%	582.8
BVH	90°	2.5%	133.1

UPLIGHT		LUMEN	
UL	100°	1.0%	54.3
UH	180°	2.5%	129.2



14' MOUNTING HEIGHT

ALN440-Y5-32LED-5K-700 WATTAGE: 74.9 LUMEN OUTPUT: 5183

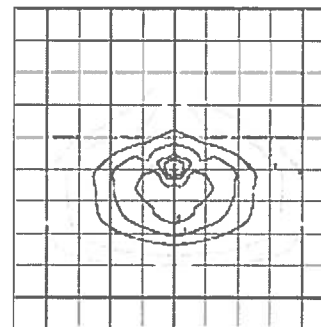
EFFICACY: 69 Lm/W

B3 U3 G3

FORWARD LIGHT		LUMEN	
FL	30°	1.9%	96.7
FM	60°	16.2%	839.4
FH	80°	25.8%	1336.3
FVH	90°	4.4%	228.3

BACK LIGHT		LUMEN	
BL	30°	1.9%	96.7
BM	60°	16.2%	839.4
BH	80°	25.8%	1336.3
BVH	90°	4.4%	228.3

UPLIGHT		LUMEN	
UL	100°	1.6%	82.2
UH	180°	1.9%	99.0



14' MOUNTING HEIGHT

IES files can be found at www.aal.net



ARCHITECTURAL AREA LIGHTING
17760 Rowland Street | City of Industry | CA 91748
P 626.968.5666 | F 626.369.2695 | www.aal.net
Copyright © 2014 May 9, 2017 3:09 PM

UU2

ALN440 – Towne Commons® LED

TYPE **GC TO VERIFY ALL INFORMATION BELOW**



ALN440

- Energy Saving LED technology
- Reliable efficient operation
- Type 2, 3, 4, 5 distributions
- 0-10V dimming ready
- LifeShield® protection system
- Surge protection included
- Wide variety of custom mounting options including post-top, wall mount or pole mount arm
- IP66 construction of optical system
- Cast aluminum struts
- DLC pending
- Available in 3000K, 4000K and 5000K
- Powder coat finish in 13 standard colors with polymer sealer

1. LUMINAIRE ALN 440	2. DISTRIBUTION Y2	3. COLOR TEMP 32LED-4K	4. DRIVER 700	5. COLOR BL	6. OPTIONS	7. CONTROL	8. MOUNTING WMA3
-------------------------	------------------------------	----------------------------------	-------------------------	-----------------------	------------	------------	----------------------------

1. LUMINAIRE

ARM OR POST TOP MOUNT
ALN 440

TOP MOUNTED ARM OR PENDANT MOUNT
ALN 440D

2. DISTRIBUTION

- Y2 (Type 2)
- Y3 (Type 3)
- Y4 (Type 4)
- Y5 (Type 5)

3. COLOR TEMPERATURE

- 32LED-3K (Warm White, 3000K output)
- 32LED-4K (Neutral White, 4000K output)
- 32LED-5K (Bright White, 5000K output)

4. DRIVER (120 thru 277 volt)

700 (700mA drive current, 75 watts)

5. COLOR

WH Arctic White	VBU Verde Blue
BL Black	CRT Corten
BLT Matte Black	MAL Matte Aluminum
DB Dark Bronze	MG Medium Grey
DGN Dark Green	AGN Antique Green
TT Titanium	LG Light Grey
WDB Weathered Bronze	RAL Premium Color
MDB Bronze Metallic	CUSTOM * * Contact Factory

6. OPTIONS

- CHM (Glass chimney with polished brass holder)
- CND (3-lamp candelabra with polished brass holder, lamps included. For decorative use only.)
- LDL (Lightly diffused lens)
- SBL (Sandblast diffused lens)
- HSS-L (House side shield, consists of three field installed panels attached to the inside of the lens. Installing three panels blocks 180° of the lens)
- MAT (Mast arm adapter slips over a 2 3/8" / 60mm O.D. pipe and is secured with 4 stainless steel set screws. For ALN440D only.)
- PMS (Pendant mount with 48" / 1220mm stem and canopy with swivel. For ALN440D only.)
- PMC (Pendant kit includes canopy and 48" / 1220mm of brass chain painted the fixture color. For ALN440D only.)
- PT5 (Post top adaptor for a 5"/127mm O.D. pole)

7. CONTROL

- PCA-C (Contemporary photocell adapter, not for Wall Mount)
- PCA-T (Traditional photocell adapter, not for Wall Mount)
- SCP (Sensor Control Programmable) pole accessory is available to provide occupancy detection for outdoor applications meeting California Title 24. For complete spec sheet and ordering information, visit www.aal.net/products/sensor_control_programmable/

8. MOUNTING

WALL MOUNT

ALN440

WMA1M	WMA1L	WMA3	WMA35U
WMA36U	WMA55	WMA56	WMA57
WMA7	WMA9U	WMA22U	

ALN440D

WMA2M	WMA2L	WMA37	WMA38
WMA39	WMA4	WMA6	WMA8
WMA9D	WMA10	WMA11	WMA12
WMA16	WMA17	WMA18	WMA22D

POLE MOUNT

Post Top Mount: (Standard)

The fixture shall slip over a 4"/100mm O.D. pole or tenon and be secured to the pole with three (or six) stainless steel set screws.

Pole Side Mount (4" O.D. or 5" O.D. side mount)

ALN440

TRA1M	TRA3	TRA5U	TRA55
TRA56 (4" only)	TRA57	TRA59U	SLA8U
SLA22U			

ALN440D

TRA2M	TRA2L	SLA3 (4" only)	SLA8D
SLA22D			

Pole Top Mount Arm

ALN440

SLA1	SLA1-2
------	--------

ALN440D

TRA4	TRA7	TRA7-2	TRA8
TRA9	TRA9-2	SLA4	SLA4-2
SLA7	SLA7-2	SLA9	SLA9-2
SLA10	SLA10-2	SLA16	SLA16-2
SLA17	SLA17-2	SLA18	SLA18-2

PIER MOUNT

PM1	PM2	PM3
-----	-----	-----

Visit www.aal.net for Arms, Poles & Accessories Specification Guide

SPECIFICATIONS

HOUSING

Luminaire shall be cast A356 alloy aluminum, free of any porosity or cosmetic fillers. Castings shall be of uniform wall thickness, minimum .188 inch with no warping or mold shifting.

The top cap shall hinge open by loosening two captive fasteners. The top shall seal the lamp compartment with a continuous silicone gasket. The lens shall be one-piece clear optical grade acrylic with a one-piece memory retentive silicone gasket on top and bottom. The LED and driver assembly shall be serviceable by backing out three thumb screws to allow for the light engine to be lifted out. Quick disconnects shall be used for all electrical connections.

All internal and external hardware shall be stainless steel.

OPTICAL MODULE

The optical assembly shall be completely sealed with a one piece injection molded silicone gasket to prevent dust, insect or moisture contamination. The optical array shall consist of high brightness light emitting diodes mounted to a printed metal circuit board with precision injection molded optically clear lenses discretely coupled to each individual diode. The printed circuit board assembly shall have a uniform conformal coating with the exception of the optical output lens at each diode and be mechanically fastened to an anodized die-cast aluminum heat sink. Standard color temperatures shall be 3000K, 4000K and 5000K.

ELECTRICAL

All Luminaires shall accept 120 thru 277 volt input and have integral surge protection. Drivers shall be U.L. recognized and have a 0-10v dimming interface with a dimming range of 10-100%. Approved dimmers include Lutron Diva AVTV, Lutron Nova NFTV and NTFTV. (Note: not compatible with current sourcing dimmers). Consult factory for current list of known compatible dimming systems. LifeShield™ shall be provided with all configurations for added protection in extreme temperature environments (-30°C to 60°C). The electrical assembly shall be mounted to a serviceable tray. The surge protector shall be U.L. recognized and have a surge current rating of 10,000 Amps using the industry standard 8/20uSec wave with a clamping voltage of 320V and surge rating of 372J.

See next page

JOB	_____
TYPE	_____
NOTES	_____

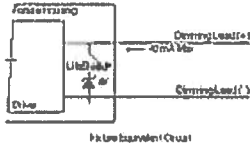


ARCHITECTURAL AREA LIGHTING
17760 Rowland Street | City of Industry | CA 91748
P 626.968.5666 | F 626.369.2695 | www.aal.net
Copyright © 2014 May 9, 2017 3:09 PM

ALN440 – Towne Commons® LED | TYPE

The surge protector case shall be a high-temperature, flame resistant plastic enclosure. The electrical assembly shall be installed and prewired in the fixture.

CONTROLS



SCP shall have an integral surge protection device with a current rating of 10,000 Amps using the industry standard 8/20uSec wave and surge rating of 372J

Sensor not intended for use with additional photo-control, wireless control or dimming systems.

SERVICING

The top of the fixture shall hinge open for relamping by loosening two stainless steel fasteners.

MOUNTING

Post top mounting: The fixture shall slip over a 4"/100mm O.D. pole or tenon and be secured to the pole with three (or six) stainless steel set screws.

Arm or wall mounting: The fixture shall be attached to the cast arm with three stainless steel bolts and a silicone gasket.

FINISH

Fixture finish shall consist of a five stage pretreatment regimen with a polymer primer sealer, oven dry off and top coated with a thermoset super TGIC polyester powder coat finish. The finish shall meet the AAMA 2604-02 performance specification which includes passing a 3000 hour salt spray test for corrosion resistance.

CERTIFICATION

Fixtures shall be listed with ETL for outdoor, wet location use, conforming to the UL 1598 and Canadian CSA 22.2 no. 250 standard. IP54.

WARRANTY / TERMS AND CONDITIONS OF SALE

Download:

<http://www.hubbelling.com/resources/warranty/>

AAL reserves the right to change product specifications without notice.

PROJECTED LUMEN MAINTENANCE

AMBIENT TEMP.	0	25,000	50,000	*TM-21-11 60,000	100,000	PROJECTED L70 (HRS)
25°C/ 77°F	100%	95%	93%	92%	89%	>60,000
40°C/ 104°F	100%	94%	91%	90%	85%	>60,000

DIMENSIONS



ALN440

ALN440
HEIGHT: 31"/790mm
LENGTH: 18"/460mm
WIDTH: 18"/460mm
WEIGHT: 40 lbs.
EPA: 2.80



ALN440D

ALN440D
HEIGHT: 26"/660mm
LENGTH: 18"/460mm
WIDTH: 18"/460mm
WEIGHT: 35 lbs.
EPA: 2.59

PERFORMANCE DATA (32 LEDS, 700 MA DRIVE CURRENT, 75 WATTS)

TYPE	LENS	5K					4K					3K				
		LUMENS	LPW	B	U	G	LUMENS	LPW	B	U	G	LUMENS	LPW	B	U	G
Y2	CLEAR	5427	72	2	3	3	5156	69	2	2	3	4016	54	1	3	2
Y3		5237	70	2	3	2	4975	66	2	3	2	3875	52	1	3	2
Y4		5736	76	1	3	3	5449	73	1	3	3	4245	57	1	3	2
Y5		5183	69	3	3	3	4945	66	3	3	2	3809	51	2	3	2
Y2		5160	69	2	4	3	4902	65	2	4	3	3818	51	1	3	3
Y3	LDL	4964	66	1	4	3	4716	63	1	4	3	3674	49	1	3	3
Y4		5449	73	1	4	3	5176	69	1	4	3	4032	54	1	4	3
Y5		4901	65	2	4	3	4685	62	2	4	3	3610	48	2	3	3
Y2	SBL	4729	63	2	4	3	4492	60	1	4	3	3499	47	1	4	3
Y3		4554	61	1	4	3	4327	58	1	4	3	3370	45	1	4	2
Y4		5004	67	1	4	3	4754	63	1	4	3	3703	49	1	4	3
Y5		4499	60	2	4	3	4292	57	2	4	3	3310	44	1	4	2

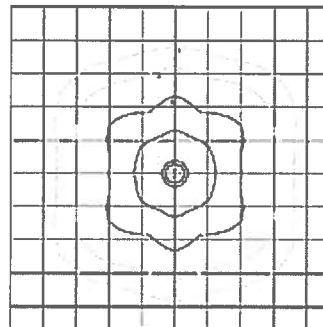
ALN440-Y3-32LED-5K-700 WATTAGE: 75 LUMEN OUTPUT: 5237 EFFICACY: 70 Lm/W

B2 U3 G2

FORWARD LIGHT	LUMEN		
FL 30°	2.4%	124.3	
FM 60°	34.5%	1804.4	
FH 80°	29.1%	1523.6	
FVH 90°	3.1%	163.2	

BACK LIGHT	LUMEN		
BL 30°	1.7%	90.7	
BM 60°	12.1%	631.5	
BH 80°	11.1%	582.8	
BVH 90°	2.5%	133.1	

UPLIGHT	LUMEN		
UL 100°	1.0%	54.3	
UH 180°	2.5%	129.2	



14' MOUNTING HEIGHT

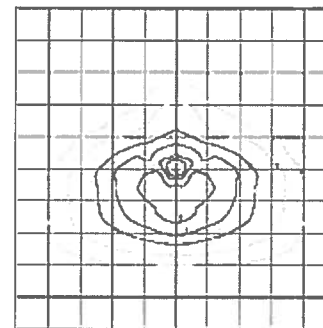
ALN440-Y5-32LED-5K-700 WATTAGE: 74.9 LUMEN OUTPUT: 5183 EFFICACY: 69 Lm/W

B3 U3 G3

FORWARD LIGHT	LUMEN		
FL 30°	1.9%	96.7	
FM 60°	16.2%	839.4	
FH 80°	25.8%	1336.3	
FVH 90°	4.4%	228.3	

BACK LIGHT	LUMEN		
BL 30°	1.9%	96.7	
BM 60°	16.2%	839.4	
BH 80°	25.8%	1336.3	
BVH 90°	4.4%	228.3	

UPLIGHT	LUMEN		
UL 100°	1.6%	82.2	
UH 180°	1.9%	99.0	



14' MOUNTING HEIGHT

IES files can be found at www.aal.net



ARCHITECTURAL AREA LIGHTING
17760 Rowland Street | City of Industry | CA 91748
P 626.968.5666 | F 626.369.2695 | www.aal.net
Copyright © 2014 May 9, 2017 3:09 PM

CPY Series

CPY250™ LED Canopy/Soffit Luminaire

TYPE B01

CPY250-A-DM-F-20W-UL-WH-40K

Product Description

The CPY250™ LED Canopy/Soffit Luminaire has an extremely thin profile constructed of rugged cast aluminum. It can be surface mounted easily from below the canopy deck. Direct imaging of the LEDs is eliminated with a highly efficient patterned flat drop glass lens.

Applications: Petroleum canopies, CNG fueling stations, low-medium bay general lighting, soffits

Performance Summary

Made in the U.S.A. of U.S. and imported parts

CRI: Minimum 70 CRI

CCT: 4000K (+/- 300K) 5700K (+/- 500K) Standard

Limited Warranty*: 10 years on luminaire/10 years on Colorfast DeltaGuard® finish

IP66 Rated (Direct Mount only)

*See <http://lighting.cree.com/warranty> for warranty terms

GC TO VERIFY THAT FIXTURES CAN BE MOUNTED PER PLAN AND ALL NECESSARY HARDWARE IS SPECIFIED FOR INSTALLATION PRIOR TO PURCHASING Accessories

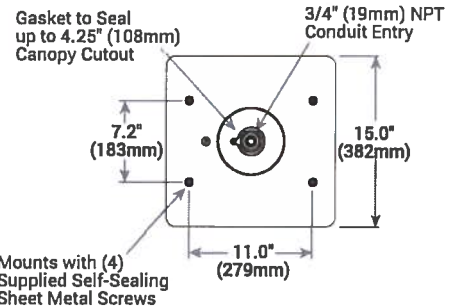
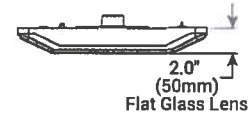
Field-Installed	
Direct Mount Luminaires	Direct Mount Junction Box/Stem Kit
Canopy Upgrade Kits	XA-BXCCJBOX – 6.0" (152mm) H x 3/4" (19mm) NPT Stem
XA-BXCCMW – for use with Jet-Phillips	- Watertight
XA-BXCCNW – for use with Elco Franciscan	- Rated for feed through 8 (4 in, 4 out) #12 AWC conductors
XA-BXCCPW – for use with LSI Dakota or Masters	Direct Mount Beauty Plates
XA-BXCCQW – for use with Whiteway Riviera or Rig-A-Lite	XA-BXCCBPW – Plate Only
XA-BXCCRW – for use with Elco Merit	XA-BXCCBPB12W – Plate w/ 12" (305mm) Backer
XA-BXCCSW – for use with LSI Richmond or Whiteway Civic	XA-BXCCBPB16W – Plate w/ 16" (406mm) Backer

*Must specify color

DM Mount **GC TO SEE NOTES BELOW**



Flat Lens



Mounts with (4) Supplied Self-Sealing Sheet Metal Screws

Weight
12.5 lbs (5.7kg)

Ordering Information

Example: BXCC9047&

BXCC9047&						
Product	Version	Mounting	Optic	Input Power	Voltage	Color Options
CPY250	A	DM Direct	F Flat Lens	20W	UL Universal 120-277V	WH White



US: www.cree.com/lighting

T (800) 236-6800 F (262) 504-5415

Rev. Date: V1 12/21/2015

Canada: www.cree.com/canada



T (800) 473-1234 F (800) 890-7507

CPY250™ LED Canopy/Soffit Luminaire

Product Specifications

CONSTRUCTION & MATERIALS

- Slim, low profile design
- Easy mounting and servicing from below the deck
- Luminaire housing is constructed of rugged cast aluminum with integral heat sink specifically designed for LED
- Flat lens is 0.125" tempered Solite® glass
- Direct mount is suitable for use in single or double skin canopies with a minimum 4.0" (102mm) wide panels and a minimum 22 gauge, 0.030" (0.7mm) canopy thickness
- Direct mount luminaire mounts directly to the canopy deck with the drilling of a single 2" to 4" (51mm to 102mm) round hole, is secured in place with self-sealing screws that provides a weathertight seal and includes 3/4" (19mm) conduit entry for direct wire feed
- Exclusive white Colorfast DeltaGuard® finish features an E-Coat epoxy primer with an ultra-durable powder topcoat, providing excellent resistance to corrosion, ultraviolet degradation and abrasion.
- **Weight:** 12.5 lbs. (5.7kg)

ELECTRICAL SYSTEM

- **Input Voltage:** 120-277V, 50/60Hz, Class 1 drivers
- **Power Factor:** > 0.9 at full load
- **Total Harmonic Distortion:** < 20% at full load
- Integral 6kV surge suppression protection standard
- To address inrush current, slow blow fuse or type C/D breaker should be used
- **10V Source Current:** 0.15mA
- **Operating Temperature Range:** -40°C - +45°C (plywood), -40°C - +50°C (sheet metal/suspended)
WARNING: Exceeding maximum operating temperature may result in thermal foldback

REGULATORY & VOLUNTARY QUALIFICATIONS

- cULus Listed
- Suitable for wet locations when ordered with DM mount
- Enclosure rated IP66 per IEC 60529 when ordered with DM mount
- Consult factory for CE Certified products
- 6kV surge suppression protection tested in accordance with IEEE/ANSI C62.41.2
- Meets FCC Part 15 standards for conducted and radiated emissions
- Luminaire and finish endurance tested to withstand 5,000 hours of elevated ambient salt fog conditions as defined in ASTM Standard B 117
- Meets Buy American requirements within ARRA

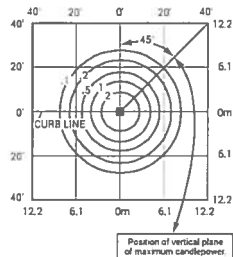
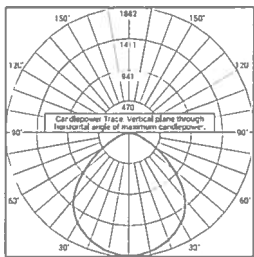
Electrical Data*							
System Watts 120-277V	System Watts 347-480V	Total Current					
		120V	208V	240V	277V	347V	480V
20	N/A	0.19	0.11	0.09	0.08	N/A	N/A

* Electrical data at 25°C (77°F)

Recommended CPY Series Lumen Maintenance Factors (LMF) ¹					
Ambient	Initial LMF	25K hr Projected ² LMF	50K hr Projected ² LMF	75K hr Projected ² LMF	100K hr Projected ² LMF
5°C (41°F)	1.05	1.00	0.93	0.87	0.81
10°C (50°F)	1.04	0.99	0.92	0.86	0.80
15°C (59°F)	1.02	0.97	0.91	0.84	0.79
20°C (68°F)	1.01	0.96	0.90	0.84	0.78
25°C (77°F)	1.00	0.95	0.89	0.83	0.77
30°C (86°F)	0.99	0.94	0.88	0.82	0.76

¹ Lumen maintenance values at 25°C (77°F) are calculated per TM-21 based on LM-80 data and in-situ luminaire testing on sheet metal
² In accordance with IESNA TM-21-11, Projected Values represent interpolated value based on time durations that are within six times (6X) the IESNA LM-80-08 total test duration (in hours) for the device under testing (DUT) i.e. the packaged LED chip

FLAT LENS



RESTL Test Report # PL03374-001
CPY250-A-**-FC-UL-40K
Initial Delivered Lumens: 4,485

BXCC90478
Mounting Height: 15' (4.6m)
Initial Delivered Lumens: 2,000
Initial FC at grade

Flat Lens Distribution	
4000K	
Initial Delivered Lumens*	BUG Ratings** Per TM-15-11
2,000	B1 U0 G1

* Initial delivered lumens at 25°C (77°F)

** For more information on the IES BUG (Backlight-Uplight-Glare) Rating visit:
www.ies.org/PDF/Erratas/TM-15-11BugRatingsAddendum.pdf

CPY Series - Version B

CPY250® LED Canopy/Soffit Luminaire

Product Description

The CPY250® LED Canopy/Soffit Luminaire has an extremely thin profile constructed of rugged cast aluminum. It can be surface mounted easily from below the canopy deck and can be pendant mounted. Direct imaging of the LEDs is eliminated with a highly efficient patterned flat or 0.91" (23mm) drop glass lens.

Applications: Petroleum canopies, CNG fueling stations, soffits

Performance Summary

Assembled in the U.S.A. of U.S. and imported parts

Initial Delivered Lumens: Up to 20,080

Efficacy: Up to 151 LPW

CRI: Minimum 70 CRI

CCT: 3000K (+/- 300K), 4000K (+/- 300K), 5700K (+/- 500K)

Limited Warranty¹: 10 years on luminaire/10 years on Colorfast DeltaGuard® finish

IP66 Rated (Direct Mount only)

Class I, Division 2 Hazardous Location for select models

¹See <http://lighting.cree.com/warranty> for warranty terms

Accessories

Field-Installed	
Direct Mount luminaires Canopy Upgrade Kits (18 ga. steel) XA-BXCCMW – for use with Jet-Phillips, 21.60" [549mm] square XA-BXCCNW – for use with Elco Franciscan, 22.06" [560mm] square XA-BXCCPW – for use with LSI Dakota or Masters, 22.50" [572mm] square XA-BXCCQW – for use with Whiteway Riviera or Rig-A-Lite, 20.60" [523mm] square XA-BXCCRW – for use with Elco Merrit, 18.06" [459mm] square XA-BXCCSW – for use with LSI Richmond or Whiteway Civic, 23.00" [584mm] L x 13.00" [330mm] W Direct Mount Junction Box/Stem Kit XA-BXCCJBOX – 6.0" [152mm] H x 3/4" [19mm] NPT Stem - Watertight - Rated for feed through 8 [4 in, 4 out] #12 AWC conductors Direct Mount Beauty Plates XA-BXCCBPW – 26.17" [665mm] Beauty Plate Only (18 ga. steel) XA-BXCCBP12W – 26.17" [665mm] Beauty Plate (18 ga. steel) w/12" [305mm] Backer Plate (16 ga. steel) - For use in canopies where deck opening is larger than what is required for mounting the CPY250 luminaire. Maximum deck opening 10.75" x 15" [183mm x 375mm] XA-BXCCBP16W – 26.17" [665mm] Beauty Plate (18 ga. steel) w/16" [406mm] Backer Plate (16 ga. steel) - For use in canopies where deck opening is larger than what is required for mounting the CPY250 luminaire. Maximum deck opening 12" x 15" [305mm x 375mm]	Pendant Mount luminaires Pendant Mount Kits XA-PS12KIT* – 5" [127mm] pendant XA-PS18KIT* – 11" [279mm] pendant XA-PS22KIT* – 15" [381mm] pendant - Includes two conduit fittings and 3/4"-14 NPT pipe threaded on two ends Hand-Held Remote XA-SENSREM - For successful implementation of the programmable multi-level option, a minimum of one hand-held remote is required

*Must specify color

Ordering Information

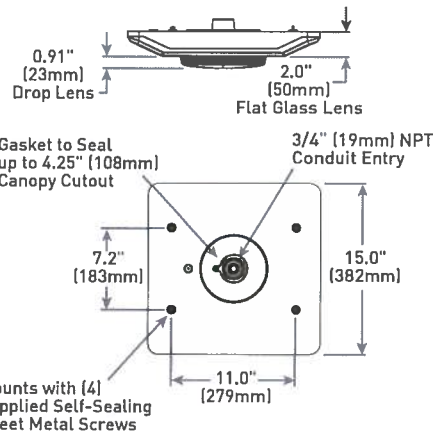
Example: CPY250-B-DM-D-A-UL-SV

CPY250	B	DM	F	A	UL	XX	40K	
Product	Version	Mounting	Optic	Input Power Designator	Voltage	Color Options	CCT	Options
CPY250	B	DM Direct HC Hook & Cord PD Pendant	D 0.91" [23mm] Drop Lens F Flat Lens	A 60W B 96W C 31W E 145W F 85W	UL Universal 120-277V UH Universal 347-480V - Available with B, E & F input power designators only 34* 347V - A & C input power designators only 48* 480V - A & C input power designators only	BK Black BZ Bronze SV Silver WH White	30K 3000K 40K 4000K 57K 5700K	DIM 0-10V Dimming - Control by others - Refer to Dimming spec sheet for details - Can't exceed wattage of specified Input Power Designator HZ Class I, Div. 2 Hazardous Location Certification - Available with DM and PD mounts only - A & C input power designators are available for DM and PD mounts except PD mount with 34 & 48 voltages in Canada - Not available with K or PML options K NSF 2 Certification - Luminaires include NSF certification mark - Available with the DM mount only - Not available with the HZ or PML options PML Programmable Multi-Level - Available with UL voltage only - Refer to PML spec sheet for details

* 347 and 480V with A & C input power designators utilize a magnetic step-down transformer. For input power for 347 and 480V, refer to the Electrical Data table

DM Mount

TYPE BP1



Weight
12.5 lbs. [5.7kg]

GC TO REFERENCE PLANS FOR COLOR DESIGNATION

GC TO VERIFY AND SPECIFY IF NOT UL

GC TO VERIFY THAT FIXTURES CAN BE MOUNTED PER PLAN AND ALL NECESSARY HARDWARE IS SPECIFIED FOR INSTALLATION PRIOR TO PURCHASING



Rev. Date: V13 10/03/2018



CPY250® LED Canopy/Soffit Luminaire - Version B

Product Specifications

CONSTRUCTION & MATERIALS

- Slim, low profile design
- Easy mounting and servicing from below the deck
- Luminaire housing is constructed of rugged cast aluminum with integral heat sink specifically designed for LED
- Flat lens is 0.125" tempered Solite® glass
- Drop lens is 0.157" molded borosilicate glass
- Direct mount is suitable for use in single or double skin canopies with a minimum 4.0" (102mm) wide panels and a minimum 22 gauge, 0.030" (0.7mm) canopy thickness
- Direct mount luminaire mounts directly to the canopy deck with the drilling of a single 2" to 4" (51mm to 102mm) round hole, is secured in place with self-sealing screws that provide a weathertight seal and includes 3/4" (19mm) conduit entry for direct wire feed
- Hook and cord mount includes a 3' (0.91m) cord out of the luminaire and is intended to hang from the single hook
- Standard pendant mount includes a mounting bracket and a J-Box for customer wiring and is intended to be mounted by 3/4 IP pendant (by others)
- Hazardous location pendant mount has a threaded hub which accepts 3/4" NPT conduit (by others) and secures with a 1/4"-20 set screw
- Exclusive Colorfast DeltaGuard® finish features an E-Coat epoxy primer with an ultra-durable powder topcoat, providing excellent resistance to corrosion, ultraviolet degradation and abrasion. Black, bronze, silver and white are available
- **Weight:** 12.5 lbs. (5.7kg)

ELECTRICAL SYSTEM

- **Input Voltage:** 120-277V or 347-480V, 50/60Hz, Class 1 drivers
- **Power Factor:** > 0.9 at full load
- **Total Harmonic Distortion:** < 20% at full load
- Integral 6kV surge suppression protection standard
- When code dictates fusing, a slow blow fuse or type C/D breaker should be used to address inrush current
- **Operating Temperature Range:** Applications Requiring Class I, Division 2 Hazardous Location Ratings: -40°C to +25°C; A Input Power Designator: -40°C to +40°C (direct mount to plywood), -40°C to +45°C (direct mount to sheet metal/suspended); B & E Input Power Designators: -40°C to +35°C (plywood), -40°C to +40°C (sheet metal/suspended); C Input Power Designator: -40°C to +45°C (plywood), -40°C to +50°C (sheet metal/suspended); F Input Power Designator: -40°C to +40°C (plywood), -40°C to +45°C (sheet metal/suspended)
- **WARNING:** Exceeding maximum operating temperature may result in thermal foldback

CONTROLS

- Continuous dimming to 10% with 0-10V DC control protocol
- **10V Source Current:** 0.15mA
- Use only lighting controls with neutral connection or controls intended for use with LED fixtures
- Reference LED Dimming spec sheet for additional dimming information

REGULATORY & VOLUNTARY QUALIFICATIONS

- cULus Listed
- Suitable for wet locations when ordered with DM mount
- Suitable for damp locations when ordered with HC and PD mounts
- Suitable for wet locations when ordered with PD mount and HZ option
- Enclosure rated IP66 per IEC 60529 when ordered with DM mount
- Consult factory for CE Certified products
- 6kV surge suppression protection tested in accordance with IEEE/ANSI C62.41.2
- Meets FCC Part 15, Subpart B, Class A standards for conducted and radiated emissions
- Luminaire and finish endurance tested to withstand 5,000 hours of elevated ambient salt fog conditions as defined in ASTM Standard B 117
- Meets Buy American requirements within ARRA
- RoHS compliant. Consult factory for additional details
- Class I, Division 2 Hazardous Location rated when ordered with the DM or PD mount and the HZ option. A & C input power designators are available for DM and PD mounts except PD mount with 34 & 48 voltages in Canada. Not available with K or PML options. Rated for Groups A, B, C & D. Bears a T3C (160°C) temperature classification within a 25°C ambient
- NSF Certified when ordered with DM mount and K option. Not available with HZ or PML options. Refer to <http://info.nsf.org/Certified/Food/> for additional details
- DLC and DLC Premium qualified versions available. Please refer to <https://www.designlights.org/search/> for most current information
- Dark Sky Friendly, IDA Approved when ordered with 30K CCT and Flat Lens (F)
- **CA RESIDENTS WARNING:** Cancer and Reproductive Harm - www.p65warnings.ca.gov

Electrical Data*								
Input Power Designator	System Watts 120-277V	System Watts 347-480V; 347/480V	Total Current (A)					
			120V	208V	240V	277V	347V	480V
A	60	68	0.51	0.29	0.25	0.22	0.20	0.14
B	96	96	0.82	0.47	0.40	0.35	0.28	0.20
C	31	33	0.26	0.15	0.13	0.11	0.10	0.07
E	145	145	1.22	0.70	0.61	0.53	0.42	0.30
F	85	85	0.72	0.41	0.36	0.31	0.24	0.18

* Electrical data at 25°C (77°F). Actual wattage may differ by +/- 10% when operating between 120-480V +/- 10%

CPY Series - Version B Ambient Adjusted Lumen Maintenance ¹					
Ambient	Initial LMF	25K hr Projected ² LMF	50K hr Projected ² LMF	75K hr Calculated ³ LMF	100K hr Calculated ³ LMF
5°C (41°F)	1.03	1.00	0.96	0.93	0.90
10°C (50°F)	1.02	0.99	0.95	0.92	0.89
15°C (59°F)	1.02	0.99	0.95	0.92	0.89
20°C (68°F)	1.01	0.98	0.95	0.91	0.88
25°C (77°F)	1.00	0.97	0.94	0.90	0.87
30°C (86°F)	0.99	0.96	0.93	0.90	0.87

¹ Lumen maintenance values at 25°C (77°F) are calculated per TM-21 based on LM-80 data and in-situ luminaire testing on sheet metal. Luminaire ambient temperature factors (LATF) have been applied to all lumen maintenance factors. Please refer to the [Temperature Zone Reference Document](#) for outdoor average nighttime ambient conditions

² In accordance with IESNA TM-21-11, Projected Values represent interpolated value based on time durations that are within six times (6X) the IESNA LM-80-08 total test duration (in hours) for the device under testing ([DUT] i.e. the packaged LED chip)

³ In accordance with IESNA TM-21-11, Calculated Values represent time durations that exceed six times (6X) the IESNA LM-80-08 total test duration (in hours) for the device under testing ([DUT] i.e. the packaged LED chip)

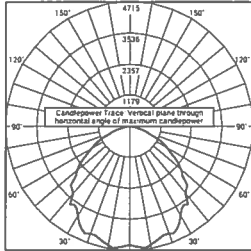


CPY250® LED Canopy/Soffit Luminaire - Version B

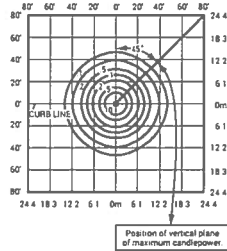
Photometry

All published luminaire photometric testing performed to IESNA LM-79-08 standards by a NVLAP accredited laboratory. To obtain an IES file specific to your project consult: <http://lighting.cree.com/products/outdoor/canopy-and-soffit/cpy-series>

DROP LENS



CESTL Test Report #: PL08412-001A
CPY250-B-**-D-B-UL-**-57K
Initial Delivered Lumens: 12,403



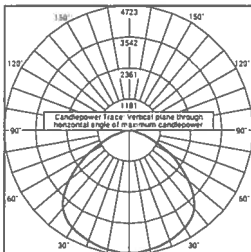
CPY250-B-**-D-B-UL-**-57K
Mounting Height: 15' (4.6m) A.F.G.
Initial Delivered Lumens: 12,860
Initial FC at grade

Drop Lens Distribution						
Input Power Designator	3000K		4000K		5700K	
	Initial Delivered Lumens*	BUG Ratings** Per TM-15-11	Initial Delivered Lumens*	BUG Ratings** Per TM-15-11	Initial Delivered Lumens*	BUG Ratings** Per TM-15-11
A	7,250	B3 U2 G1	7,600	B3 U2 G1	7,720	B3 U2 G1
B	11,850	B3 U2 G1	12,380	B3 U2 G1	12,860	B3 U2 G1
C	4,210	B2 U2 G1	4,420	B2 U2 G1	4,520	B2 U2 G1
E	19,100	B4 U3 G2	19,600	B4 U3 G2	20,080	B4 U3 G2
F	11,850	B3 U2 G1	12,380	B3 U2 G1	12,860	B3 U2 G1

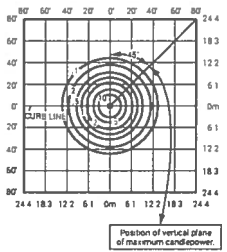
* Initial delivered lumens at 25°C (77°F). Actual production yield may vary between -10 and -10% of initial delivered lumens

** For more information on the IES BUG (Backlight-Uplight-Glare) Rating visit <https://www.ies.org/wp-content/uploads/2017/03/TM-15-11BUGRatingsAddendum.pdf>

FLAT LENS



CESTL Test Report #: PL08165-001C
CPY250-B-**-F-B-UL-**-57K
Initial Delivered Lumens: 13,040



CPY250-B-**-F-B-UL-**-57K
Mounting Height: 15' (4.6m) A.F.G.
Initial Delivered Lumens: 12,860
Initial FC at grade

Flat Lens Distribution						
Input Power Designator	3000K		4000K		5700K	
	Initial Delivered Lumens*	BUG Ratings** Per TM-15-11	Initial Delivered Lumens*	BUG Ratings** Per TM-15-11	Initial Delivered Lumens*	BUG Ratings** Per TM-15-11
A	7,250	B3 U0 G1	7,600	B3 U0 G1	7,720	B3 U0 G1
B	11,850	B3 U0 G1	12,380	B3 U0 G1	12,860	B3 U0 G1
C	4,210	B2 U0 G1	4,420	B2 U0 G1	4,520	B2 U0 G1
E	19,100	B4 U0 G1	19,600	B4 U0 G1	20,080	B4 U0 G1
F	11,850	B3 U0 G1	12,380	B3 U0 G1	12,860	B3 U0 G1

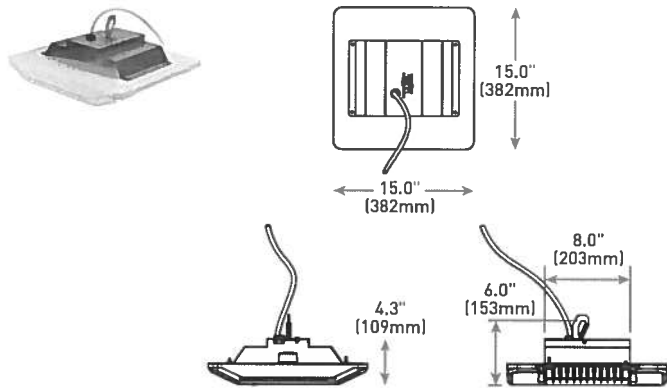
* Initial delivered lumens at 25°C (77°F). Actual production yield may vary between -10 and -10% of initial delivered lumens

** For more information on the IES BUG (Backlight-Uplight-Glare) Rating visit <https://www.ies.org/wp-content/uploads/2017/03/TM-15-11BUGRatingsAddendum.pdf>

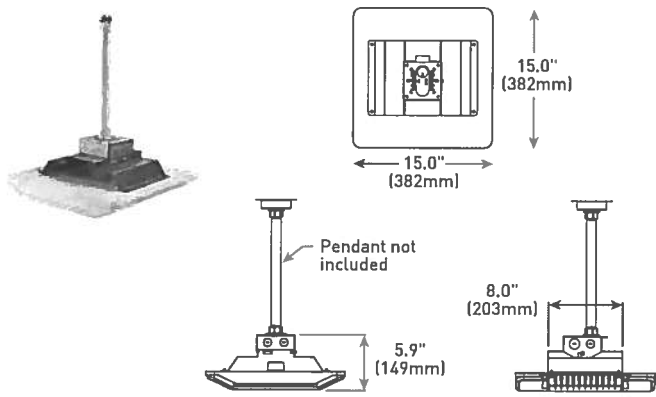


CPY250® LED Canopy/Soffit Luminaire - Version B

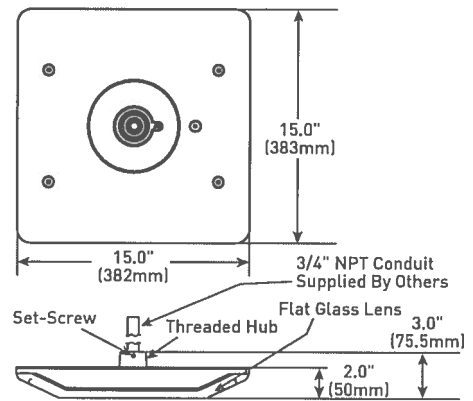
HC Mount



PD Mount



PD Mount w/HZ Option



XSP Series

TYPE TC1

XSPW™ LED Wall Mount Luminaire featuring Cree TrueWhite® Technology

Product Description **CONTRACTOR TO SEE NOTES BELOW**

The XSPW™ LED wall mount luminaire has a slim, low profile design intended for outdoor wall mounted applications. The rugged lightweight aluminum housing and mounting box are designed for installation over standard single gang J-Boxes and mud ring single gang J-Boxes. The luminaire allows for through-wired or conduit entry from the top, bottom, sides and rear. The housing design is intended specifically for LED technology including a weathertight LED driver compartment and thermal management. Optic design features industry-leading NanoOptic® Precision Delivery Grid™ system in multiple distributions.

Applications: General area and security lighting

Performance Summary

NanoOptic® Precision Delivery Grid™ optic

Assembled in the U.S.A. of U.S. and imported parts

CRI: Minimum 70 CRI (3000K, 4000K & 5700K); 90 CRI (5000K)

CCT: 3000K, 4000K, 5000K, 5700K

Limited Warranty¹: 10 years on luminaire/10 years on Colorfast DeltaGuard® finish

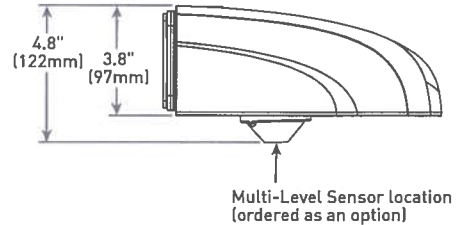
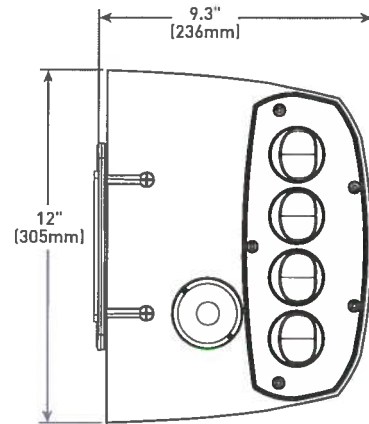
¹See <http://lighting.cree.com/warranty> for warranty terms

CONTRACTOR TO VERIFY THAT FIXTURES CAN BE MOUNTED PER PLAN AND ALL NECESSARY HARDWARE IS SPECIFIED FOR INSTALLATION PRIOR TO PURCHASING

Accessories

Field-Installed	
Beauty Plate WM-PLT12** - 12" (305mm) Square WM-PLT14** - 14" (356mm) Square - Covers holes left by incumbent wall packs	Hand-Held Remote XA-SENSREM - For successful implementation of the programmable multi-level option, a minimum of one hand-held remote is required

** Must specify color



Lumen Package	Weight
2L, 4L, 6L	11.0 lbs. (5.0kg)
8L	11.8 lbs. (5.4kg)

CONTRACTOR TO VERIFY AND SPECIFY IF NOT UL

CONTRACTOR TO REFERENCE PLANS FOR COLOR DESIGNATION

Ordering Information

Example: XSPW-B-WM-2ME-2L-30K-UL-BK

XSPW	B	WM	2ME	6L	40K	UL	XX	
Product	Version	Mounting	Optic	Lumen Package*	CCT	Voltage	Color Options	Options
XSPW	B	WM Wall	2ME Type II Medium 3ME Type III Medium 4ME Type IV Medium	2L 2,490 lumens 4L 4,270 lumens 6L 6,100 lumens 8L 8,475 lumens	30K 3000K - 70 CRI 40K 4000K - 70 CRI 50K 5000K - 90 CRI 57K 5700K - 70 CRI	UL Universal 120-277V UH Universal 347-480V 34** 347V - For use with P option only	BK Black BZ Bronze SV Silver WH White	ML Multi-Level - Refer to ML spec sheet for details - Available with UL voltage only P Button Photocell - Not available with ML or PML option - Available with UL and 34 voltages only PML Programmable Multi-Level - Refer to PML spec sheet for details - Available with UL voltage only

* Lumen Package selection codes identify approximate light output only. Actual lumen output levels may vary depending on CCT and optic selection. Refer to Initial Delivered Lumen tables for specific lumen values

** Consult factory for availability

Rev. Date: VersionB V2 01/03/2019



XSPW™ LED Wall Mount Luminaire

Product Specifications

CREE TRUEWHITE® TECHNOLOGY

A revolutionary way to generate high-quality white light, Cree TrueWhite® Technology is a patented approach that delivers an exclusive combination of 90+ CRI, beautiful light characteristics and lifelong color consistency, all while maintaining high luminous efficacy – a true no compromise solution.

CONSTRUCTION & MATERIALS

- Slim, low profile design
- Luminaire housing specifically designed for LED applications with advanced LED thermal management and driver
- Luminaire mounting box designed for installation over standard single gang J-Boxes and mud ring single gang J-Boxes
- Luminaire can also be direct mounted to a wall and surface wired
- Secures to wall with four 3/16" (5mm) screws (by others)
- Conduit entry from top, bottom, sides, and rear
- Exclusive Colorfast DeltaGuard® finish features an E-coat epoxy primer with an ultra-durable powder topcoat, providing excellent resistance to corrosion, ultraviolet degradation and abrasion. Silver, black, white and bronze are available

• **Weight:** 2L, 4L, 6L - 11.0 lbs. (5.0kg); 8L - 11.8 lbs. (5.4kg)

ELECTRICAL SYSTEM

- **Input Voltage:** 120-277V or 347-480V, 50/60Hz
- **Power Factor:** > 0.9 at full load
- **Total Harmonic Distortion:** < 20% at full load
- Integral 10kV surge suppression protection standard
- When code dictates fusing, a slow blow fuse or type C/D breaker should be used to address inrush current
- Designed with 0-10V dimming capabilities. Controls by others
- **10V Source Current:** 0.15 mA
- **Operating Temperature Range:** -40°C - +50°C (-40°F - +122°F)

REGULATORY & VOLUNTARY QUALIFICATIONS

- cULus Listed
- Suitable for wet locations
- Designed for downlight applications only
- Enclosure rated IP66 per IEC 60598
- 10kV surge suppression protection tested in accordance with IEEE/ANSI C62.41.2
- Meets FCC Part 15, Subpart B, Class A standards for conducted and radiated emissions
- Luminaire and finish endurance tested to withstand 5,000 hours of elevated ambient salt fog conditions as defined in ASTM Standard B 117
- Meets Buy American requirements within ARRA
- RoHS compliant. Consult factory for additional details
- Dark Sky Friendly, IDA Approved when ordered with 30K CCT
- DLC and DLC Premium qualified versions available. Please refer to <https://www.designlights.org/search/> for most current information

• **CA RESIDENTS WARNING:** Cancer and Reproductive Harm – www.p65warnings.ca.gov

Electrical Data*									
Lumen Package	CCT/CRI	System Watts 120-480V	Efficacy	Total Current (A)					
				120V	208V	240V	277V	347V	480V
2L	30K/70 CRI	20	125	0.17	0.10	0.08	0.07	0.06	0.05
	40K/70 CRI	19	131	0.16	0.09	0.08	0.07	0.06	0.04
	50K/90 CRI	24	104	0.20	0.11	0.10	0.08	0.07	0.05
	57K/70 CRI	19	131	0.16	0.09	0.08	0.07	0.06	0.04
4L	30K/70 CRI	33	129	0.28	0.16	0.14	0.13	0.10	0.07
	40K/70 CRI	31	138	0.27	0.15	0.13	0.12	0.09	0.07
	50K/90 CRI	40	107	0.34	0.20	0.17	0.16	0.12	0.09
	57K/70 CRI	31	138	0.26	0.15	0.13	0.12	0.09	0.07
6L	30K/70 CRI	51	120	0.43	0.25	0.22	0.19	0.14	0.11
	40K/70 CRI	47	130	0.40	0.23	0.20	0.18	0.14	0.10
	50K/90 CRI	60	102	0.51	0.29	0.25	0.23	0.17	0.13
	57K/70 CRI	47	130	0.40	0.23	0.20	0.17	0.14	0.10
8L	30K/70 CRI	77	110	0.65	0.38	0.32	0.28	0.22	0.16
	40K/70 CRI	72	118	0.61	0.35	0.31	0.27	0.21	0.15
	50K/90 CRI	78	89	0.66	0.37	0.33	0.29	0.22	0.16
	57K/70 CRI	71	119	0.60	0.35	0.30	0.26	0.20	0.15

* Electrical data at 25°C (77°F). Actual wattage may differ by +/- 10% when operating between 120-277V or 347-480V +/- 10%

XSPW Series Ambient Adjusted Lumen Maintenance Factors ¹					
Ambient	Initial LMF	25K hr Projected ² LMF	50K hr Projected ² LMF	75K hr Calculated ³ LMF	100K hr Calculated ³ LMF
0°C (32°F)	1.05	1.00	0.98	0.96	0.94
5°C (41°F)	1.04	1.00	0.98	0.96	0.94
10°C (50°F)	1.03	0.99	0.97	0.95	0.93
15°C (59°F)	1.02	0.98	0.96	0.94	0.92
20°C (68°F)	1.01	0.97	0.95	0.93	0.91
25°C (77°F)	1.00	0.96	0.94	0.92	0.90
30°C (86°F)	0.99	0.95	0.93	0.91	0.89
35°C (95°F)	0.98	0.94	0.92	0.90	0.88
40°C (104°F)	0.97	0.93	0.91	0.89	0.87

¹ Lumen maintenance values at 25°C (77°F) are calculated per TM-21 based on LM-80 data and in-situ luminaire testing. Luminaire ambient temperature factors (LATF) have been applied to all lumen maintenance factors. Please refer to the [Temperature Zone Reference Document](#) for outdoor average nighttime ambient conditions

² In accordance with IESNA TM-21-11, Projected Values represent interpolated value based on time durations that are within six times (6X) the IESNA LM-80-08 total test duration (in hours) for the device under testing (DUT) i.e. the packaged LED chip

³ In accordance with IESNA TM-21-11, Calculated Values represent time durations that exceed six times (6X) the IESNA LM-80-08 total test duration (in hours) for the device under testing (DUT) i.e. the packaged LED chip

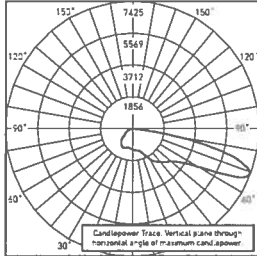


XSPW™ LED Wall Mount Luminaire

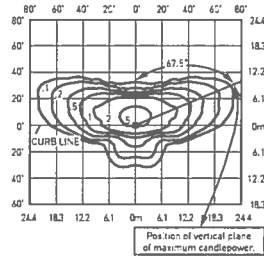
Photometry

All published luminaire photometric testing performed to IESNA LM-79-08 standards by a NVLAP accredited laboratory. To obtain an IES file specific to your project consult: <http://lighting.cree.com/products/outdoor/wall-mount/xsp-series-wall>

2ME



CESTL Test Report #: PL12798-001A
XSPW-B-**-2ME-8L-40K-UL
Initial Delivered Lumens: 8,622

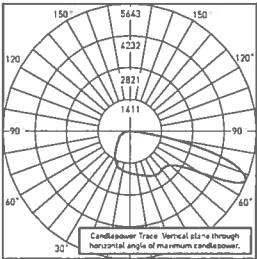


XSPW-B-**-2ME-8L-40K-UL
Mounting Height: 15' (4.6) A.F.G.
Initial Delivered Lumens: 8,475
Initial FC at grade

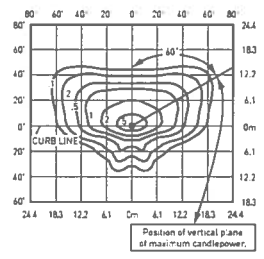
Type II Medium Distribution								
Lumen Package	3000K		4000K		5000K		5700K	
	Initial Delivered Lumens*	BUG Ratings** Per TM-15-11	Initial Delivered Lumens*	BUG Ratings** Per TM-15-11	Initial Delivered Lumens*	BUG Ratings** Per TM-15-11	Initial Delivered Lumens*	BUG Ratings** Per TM-15-11
2L	2,490	B1 U0 G1	2,490	B1 U0 G1	2,490	B1 U0 G1	2,490	B1 U0 G1
4L	4,270	B1 U0 G1	4,270	B1 U0 G1	4,270	B1 U0 G1	4,270	B1 U0 G1
6L	6,100	B1 U0 G2	6,100	B1 U0 G2	6,100	B1 U0 G2	6,100	B1 U0 G2
8L	8,475	B2 U0 G2	8,475	B2 U0 G2	6,925	B1 U0 G2	8,475	B2 U0 G2

* Initial delivered lumens at 25°C (77°F). Actual production yield may vary between -10 and +10% of initial delivered lumens
** For more information on the IES BUG (Backlight-Uplight-Glare) Rating visit: <https://www.ies.org/wp-content/uploads/2017/03/TM-15-11BUGRatingsAddendum.pdf>

3ME



CESTL Test Report #: PL12366-007A
XSPW-B-**-3ME-8L-40K-UL
Initial Delivered Lumens: 8,543



XSPW-B-**-3ME-8L-40K-UL
Mounting Height: 15' (4.6m) A.F.G.
Initial Delivered Lumens: 8,475
Initial FC at grade

Type III Medium Distribution								
Lumen Package	3000K		4000K		5000K		5700K	
	Initial Delivered Lumens*	BUG Ratings** Per TM-15-11	Initial Delivered Lumens*	BUG Ratings** Per TM-15-11	Initial Delivered Lumens*	BUG Ratings** Per TM-15-11	Initial Delivered Lumens*	BUG Ratings** Per TM-15-11
2L	2,490	B1 U0 G1	2,490	B1 U0 G1	2,490	B1 U0 G1	2,490	B1 U0 G1
4L	4,270	B1 U0 G1	4,270	B1 U0 G1	4,270	B1 U0 G1	4,270	B1 U0 G1
6L	6,100	B1 U0 G2	6,100	B1 U0 G2	6,100	B1 U0 G2	6,100	B1 U0 G2
8L	8,475	B2 U0 G2	8,475	B2 U0 G2	6,925	B1 U0 G2	8,475	B2 U0 G2

* Initial delivered lumens at 25°C (77°F). Actual production yield may vary between -10 and +10% of initial delivered lumens
** For more information on the IES BUG (Backlight-Uplight-Glare) Rating visit: <https://www.ies.org/wp-content/uploads/2017/03/TM-15-11BUGRatingsAddendum.pdf>

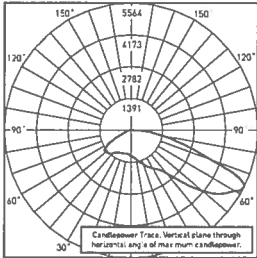


XSPW™ LED Wall Mount Luminaire

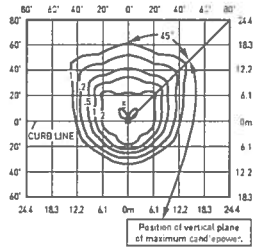
Photometry

All published luminaire photometric testing performed to IESNA LM-79-08 standards by a NVLAP accredited laboratory. To obtain an IES file specific to your project consult: <http://lighting.cree.com/products/outdoor/wall-mount/xsp-series-wall>

4ME



CESTL Test Report #: PL12799-001A
XSPW-B-**-4ME-BL-40K-UL
Initial Delivered Lumens: 8,873



XSPW-B-**-4ME-BL-40K-UL
Mounting Height: 15' (4.6m) A.F.G.
Initial Delivered Lumens: 8,475
Initial FC at grade

Type IV Medium Distribution								
Lumen Package	3000K		4000K		5000K		5700K	
	Initial Delivered Lumens*	BUG Ratings** Per TM-15-11	Initial Delivered Lumens*	BUG Ratings** Per TM-15-11	Initial Delivered Lumens*	BUG Ratings** Per TM-15-11	Initial Delivered Lumens*	BUG Ratings** Per TM-15-11
2L	2,490	B1 U0 G1	2,490	B1 U0 G1	2,490	B1 U0 G1	2,490	B1 U0 G1
4L	4,270	B1 U0 G1	4,270	B1 U0 G1	4,270	B1 U0 G1	4,270	B1 U0 G1
6L	6,100	B2 U0 G2	6,100	B2 U0 G2	6,100	B2 U0 G2	6,100	B2 U0 G2
8L	8,475	B2 U0 G2	8,475	B2 U0 G2	6,925	B2 U0 G2	8,475	B2 U0 G2

* Initial delivered lumens at 25°C (77°F). Actual production yield may vary between -10 and +10% of initial delivered lumens
** For more information on the IES BUG (Backlight-Uplight-Glare) Rating visit <https://www.ies.org/wp-content/uploads/2017/03/TM-15-11BUGRatingsAddendum.pdf>



XSP Series

TYPE TF1

XSPW™ LED Wall Mount Luminaire featuring Cree TrueWhite® Technology

Product Description **CONTRACTOR TO SEE NOTES BELOW**

The XSPW™ LED wall mount luminaire has a slim, low profile design intended for outdoor wall mounted applications. The rugged lightweight aluminum housing and mounting box are designed for installation over standard single gang J-Boxes and mud ring single gang J-Boxes. The luminaire allows for through-wired or conduit entry from the top, bottom, sides and rear. The housing design is intended specifically for LED technology including a weathertight LED driver compartment and thermal management. Optic design features industry-leading NanoOptic® Precision Delivery Grid™ system in multiple distributions.

Applications: General area and security lighting

Performance Summary

NanoOptic® Precision Delivery Grid™ optic

Assembled in the U.S.A. of U.S. and imported parts

CRI: Minimum 70 CRI (3000K, 4000K & 5700K); 90 CRI (5000K)

CCT: 3000K, 4000K, 5000K, 5700K

Limited Warranty*: 10 years on luminaire/10 years on Colorfast DeltaGuard® finish

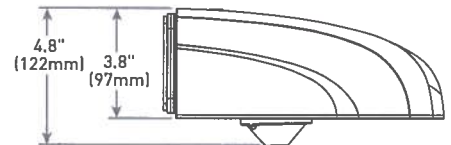
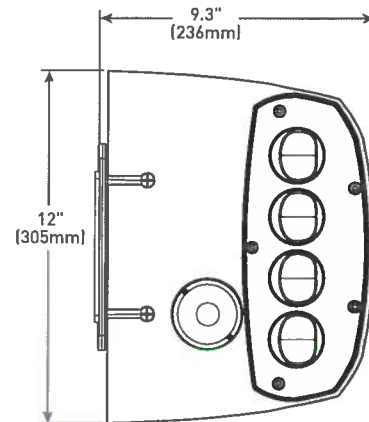
* See <http://lighting.cree.com/warranty> for warranty terms

CONTRACTOR TO VERIFY THAT FIXTURES CAN BE MOUNTED PER PLAN AND ALL NECESSARY HARDWARE IS SPECIFIED FOR INSTALLATION PRIOR TO PURCHASING

Accessories

Field-Installed	
Beauty Plate WM-PLT12** - 12" (305mm) Square WM-PLT14** - 14" (356mm) Square - Covers holes left by incumbent wall packs	Hand-Held Remote XA-SENSREM - For successful implementation of the programmable multi-level option, a minimum of one hand-held remote is required

** Must specify color



Multi-Level Sensor location (ordered as an option)

Lumen Package	Weight
2L, 4L, 6L	11.0 lbs. (5.0kg)
8L	11.8 lbs. (5.4kg)

CONTRACTOR TO VERIFY AND SPECIFY IF NOT UL

CONTRACTOR TO REFERENCE PLANS FOR COLOR DESIGNATION

Ordering Information

Example: XSPW-B-WM-2ME-2L-30K-UL-BK

XSPW	B	WM	3ME	4L	40K	UL	XX	
Product	Version	Mounting	Optic	Lumen Package*	CCT	Voltage	Color Options	Options
XSPW	B	WM Wall	2ME Type II Medium 3ME Type III Medium 4ME Type IV Medium	2L 2,490 lumens 4L 4,270 lumens 6L 6,100 lumens 8L 8,475 lumens	30K 3000K - 70 CRI 40K 4000K - 70 CRI 50K 5000K - 90 CRI 57K 5700K - 70 CRI	UL Universal 120-277V UH Universal 347-480V 34** 347V - For use with P option only	BK Black BZ Bronze SV Silver WH White	ML Multi-Level - Refer to ML spec sheet for details - Available with UL voltage only P Button Photocell - Not available with ML or PML option - Available with UL and 34 voltages only PML Programmable Multi-Level - Refer to PML spec sheet for details - Available with UL voltage only

* Lumen Package selection codes identify approximate light output only. Actual lumen output levels may vary depending on CCT and optic selection. Refer to Initial Delivered Lumen tables for specific lumen values

** Consult factory for availability

Rev. Date: Version B V2 01/03/2019



XSPW™ LED Wall Mount Luminaire

Product Specifications

CREE TRUEWHITE® TECHNOLOGY

A revolutionary way to generate high-quality white light, Cree TrueWhite® Technology is a patented approach that delivers an exclusive combination of 90+ CRI, beautiful light characteristics and lifelong color consistency, all while maintaining high luminous efficacy – a true no compromise solution.

CONSTRUCTION & MATERIALS

- Slim, low profile design
- Luminaire housing specifically designed for LED applications with advanced LED thermal management and driver
- Luminaire mounting box designed for installation over standard single gang J-Boxes and mud ring single gang J-Boxes
- Luminaire can also be direct mounted to a wall and surface wired
- Secures to wall with four 3/16" (5mm) screws (by others)
- Conduit entry from top, bottom, sides, and rear
- Exclusive Colorfast DeltaGuard® finish features an E-coat epoxy primer with an ultra-durable powder topcoat, providing excellent resistance to corrosion, ultraviolet degradation and abrasion. Silver, black, white and bronze are available

• **Weight:** 2L, 4L, 6L - 11.0 lbs. (5.0kg); 8L - 11.8 lbs. (5.4kg)

ELECTRICAL SYSTEM

- **Input Voltage:** 120-277V or 347-480V, 50/60Hz
- **Power Factor:** > 0.9 at full load
- **Total Harmonic Distortion:** < 20% at full load
- Integral 10kV surge suppression protection standard
- When code dictates fusing, a slow blow fuse or type C/D breaker should be used to address inrush current
- Designed with 0-10V dimming capabilities. Controls by others
- **10V Source Current:** 0.15 mA
- **Operating Temperature Range:** -40°C - +50°C (-40°F - +122°F)

REGULATORY & VOLUNTARY QUALIFICATIONS

- cULus Listed
- Suitable for wet locations
- Designed for downlight applications only
- Enclosure rated IP66 per IEC 60598
- 10kV surge suppression protection tested in accordance with IEEE/ANSI C62.41.2
- Meets FCC Part 15, Subpart B, Class A standards for conducted and radiated emissions
- Luminaire and finish endurance tested to withstand 5,000 hours of elevated ambient salt fog conditions as defined in ASTM Standard B 117
- Meets Buy American requirements within ARRA
- RoHS compliant. Consult factory for additional details
- Dark Sky Friendly, IDA Approved when ordered with 30K CCT
- DLC and DLC Premium qualified versions available. Please refer to <https://www.designlights.org/search/> for most current information
- **CA RESIDENTS WARNING:** Cancer and Reproductive Harm - www.p65warnings.ca.gov

Electrical Data*									
Lumen Package	CCT/CRI	System Watts	Efficacy	Total Current (A)					
		120-480V		120V	208V	240V	277V	347V	480V
2L	30K/70 CRI	20	125	0.17	0.10	0.08	0.07	0.06	0.05
	40K/70 CRI	19	131	0.16	0.09	0.08	0.07	0.06	0.04
	50K/90 CRI	24	104	0.20	0.11	0.10	0.08	0.07	0.05
	57K/70 CRI	19	131	0.16	0.09	0.08	0.07	0.06	0.04
4L	30K/70 CRI	33	129	0.28	0.16	0.14	0.13	0.10	0.07
	40K/70 CRI	31	138	0.27	0.15	0.13	0.12	0.09	0.07
	50K/90 CRI	40	107	0.34	0.20	0.17	0.16	0.12	0.09
	57K/70 CRI	31	138	0.26	0.15	0.13	0.12	0.09	0.07
6L	30K/70 CRI	51	120	0.43	0.25	0.22	0.19	0.14	0.11
	40K/70 CRI	47	130	0.40	0.23	0.20	0.18	0.14	0.10
	50K/90 CRI	60	102	0.51	0.29	0.25	0.23	0.17	0.13
	57K/70 CRI	47	130	0.40	0.23	0.20	0.17	0.14	0.10
8L	30K/70 CRI	77	110	0.65	0.38	0.32	0.28	0.22	0.16
	40K/70 CRI	72	118	0.61	0.35	0.31	0.27	0.21	0.15
	50K/90 CRI	78	89	0.66	0.37	0.33	0.29	0.22	0.16
	57K/70 CRI	71	119	0.60	0.35	0.30	0.26	0.20	0.15

* Electrical data at 25°C (77°F). Actual wattage may differ by +/- 10% when operating between 120-277V or 347-480V +/- 10%

XSPW Series Ambient Adjusted Lumen Maintenance Factors ¹					
Ambient	Initial LMF	25K hr Projected ² LMF	50K hr Projected ² LMF	75K hr Calculated ³ LMF	100K hr Calculated ³ LMF
0°C (32°F)	1.05	1.00	0.98	0.96	0.94
5°C (41°F)	1.04	1.00	0.98	0.96	0.94
10°C (50°F)	1.03	0.99	0.97	0.95	0.93
15°C (59°F)	1.02	0.98	0.96	0.94	0.92
20°C (68°F)	1.01	0.97	0.95	0.93	0.91
25°C (77°F)	1.00	0.96	0.94	0.92	0.90
30°C (86°F)	0.99	0.95	0.93	0.91	0.89
35°C (95°F)	0.98	0.94	0.92	0.90	0.88
40°C (104°F)	0.97	0.93	0.91	0.89	0.87

¹ Lumen maintenance values at 25°C (77°F) are calculated per TM-21 based on LM-80 data and in-situ luminaire testing. Luminaire ambient temperature factors (LATF) have been applied to all lumen maintenance factors. Please refer to the [Temperature Zone Reference Document](#) for outdoor average nighttime ambient conditions

² In accordance with IESNA TM-21-11, Projected Values represent interpolated value based on time durations that are within six times (6x) the IESNA LM-80-08 total test duration (in hours) for the device under testing (DUT) i.e. the packaged LED chip

³ In accordance with IESNA TM-21-11, Calculated Values represent time durations that exceed six times (6x) the IESNA LM-80-08 total test duration (in hours) for the device under testing (DUT) i.e. the packaged LED chip

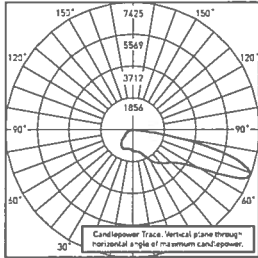


XSPW™ LED Wall Mount Luminaire

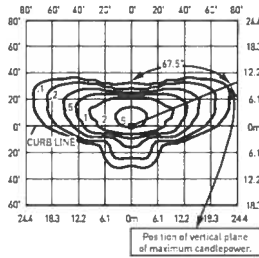
Photometry

All published luminaire photometric testing performed to IESNA LM-79-08 standards by a NVLAP accredited laboratory. To obtain an IES file specific to your project consult: <http://lighting.cree.com/products/outdoor/wall-mount/xsp-series-wall>

2ME



CESTL Test Report #: PL12798-001A
XSPW-B-**-2ME-8L-40K-UL
Initial Delivered Lumens: 8,622

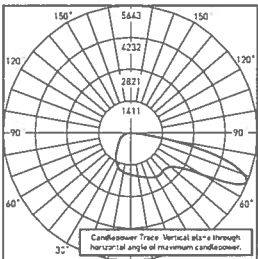


XSPW-B-**-2ME-8L-40K-UL
Mounting Height: 15' (4.6) A.F.G.
Initial Delivered Lumens: 8,475
Initial FC at grade

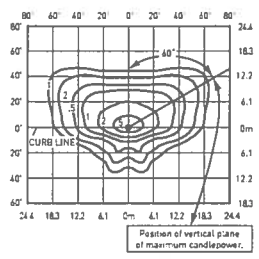
Type II Medium Distribution								
Lumen Package	3000K		4000K		5000K		5700K	
	Initial Delivered Lumens*	BUG Ratings** Per TM-15-11	Initial Delivered Lumens*	BUG Ratings** Per TM-15-11	Initial Delivered Lumens*	BUG Ratings** Per TM-15-11	Initial Delivered Lumens*	BUG Ratings** Per TM-15-11
2L	2,490	B1 U0 G1	2,490	B1 U0 G1	2,490	B1 U0 G1	2,490	B1 U0 G1
4L	4,270	B1 U0 G1	4,270	B1 U0 G1	4,270	B1 U0 G1	4,270	B1 U0 G1
6L	6,100	B1 U0 G2	6,100	B1 U0 G2	6,100	B1 U0 G2	6,100	B1 U0 G2
8L	8,475	B2 U0 G2	8,475	B2 U0 G2	6,925	B1 U0 G2	8,475	B2 U0 G2

* Initial delivered lumens at 25°C (77°F). Actual production yield may vary between -10 and +10% of initial delivered lumens
** For more information on the IES BUG (Backlight-Uplight-Glare) Rating visit: <https://www.ies.org/wp-content/uploads/2017/03/TM-15-11BUGRatingsAddendum.pdf>

3ME



CESTL Test Report #: PL12366-007A
XSPW-B-**-3ME-8L-40K-UL
Initial Delivered Lumens: 8,543



XSPW-B-**-3ME-8L-40K-UL
Mounting Height: 15' (4.6m) A.F.G.
Initial Delivered Lumens: 8,475
Initial FC at grade

Type III Medium Distribution								
Lumen Package	3000K		4000K		5000K		5700K	
	Initial Delivered Lumens*	BUG Ratings** Per TM-15-11	Initial Delivered Lumens*	BUG Ratings** Per TM-15-11	Initial Delivered Lumens*	BUG Ratings** Per TM-15-11	Initial Delivered Lumens*	BUG Ratings** Per TM-15-11
2L	2,490	B1 U0 G1	2,490	B1 U0 G1	2,490	B1 U0 G1	2,490	B1 U0 G1
4L	4,270	B1 U0 G1	4,270	B1 U0 G1	4,270	B1 U0 G1	4,270	B1 U0 G1
6L	6,100	B1 U0 G2	6,100	B1 U0 G2	6,100	B1 U0 G2	6,100	B1 U0 G2
8L	8,475	B2 U0 G2	8,475	B2 U0 G2	6,925	B1 U0 G2	8,475	B2 U0 G2

* Initial delivered lumens at 25°C (77°F). Actual production yield may vary between -10 and +10% of initial delivered lumens
** For more information on the IES BUG (Backlight-Uplight-Glare) Rating visit: <https://www.ies.org/wp-content/uploads/2017/03/TM-15-11BUGRatingsAddendum.pdf>

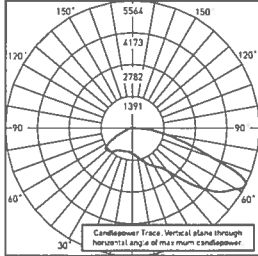


XSPW™ LED Wall Mount Luminaire

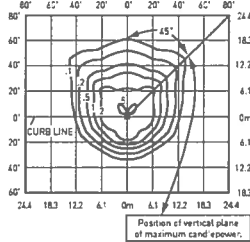
Photometry

All published luminaire photometric testing performed to IESNA LM-79-08 standards by a NVLAP accredited laboratory. To obtain an IES file specific to your project consult: <http://lighting.cree.com/products/outdoor/wall-mount/xsp-series-wall>

4ME



CESTL Test Report #: PL12799-001A
XSPW-B-**-4ME-8L-40K-UL
Initial Delivered Lumens: 8,873



XSPW-B-**-4ME-8L-40K-UL
Mounting Height: 15' (4.6m) A.F.G.
Initial Delivered Lumens: 8,475
Initial FC at grade

Type IV Medium Distribution								
Lumen Package	3000K		4000K		5000K		5700K	
	Initial Delivered Lumens*	BUG Ratings** Per TM-15-11	Initial Delivered Lumens*	BUG Ratings** Per TM-15-11	Initial Delivered Lumens*	BUG Ratings** Per TM-15-11	Initial Delivered Lumens*	BUG Ratings** Per TM-15-11
2L	2,490	B1 U0 G1	2,490	B1 U0 G1	2,490	B1 U0 G1	2,490	B1 U0 G1
4L	4,270	B1 U0 G1	4,270	B1 U0 G1	4,270	B1 U0 G1	4,270	B1 U0 G1
6L	6,100	B2 U0 G2	6,100	B2 U0 G2	6,100	B2 U0 G2	6,100	B2 U0 G2
8L	8,475	B2 U0 G2	8,475	B2 U0 G2	6,925	B2 U0 G2	8,475	B2 U0 G2

* Initial delivered lumens at 25°C (77°F). Actual production yield may vary between -10 and +10% of initial delivered lumens
** For more information on the IES BUG (Backlight-Uplight-Glare) Rating visit: <https://www.ies.org/wp-content/uploads/2017/03/TM-15-11BUGRatingsAddendum.pdf>

