

APPLICATION FOR CERTIFICATE OF APPROPRIATENESS (COA)

Building address 72 E. Market St.
Owner of building Lori and Rod Young Phone [redacted]
Owner's email & mailing address [redacted] 72 E. Market St.
Applicant Lori Young Phone: [redacted]
Applicant's email & mailing address same as above
Street and Number City State Zip Code

APPLICANT MUST ATTEND MEETING FOR CASE TO BE HEARD.
USE THE CHECKLIST ON THE BACK OF THIS APPLICATION TO ENSURE YOUR SUBMISSION IS COMPLETE.

Historic & Architectural Review Board - Application form, photographs, and drawings must be submitted 2 weeks prior to the regular scheduled meeting in order to be placed on the agenda for the next meeting.

South Bethlehem & Mount Airy Historic Conservation Commission - Application form, photographs, and drawings must be submitted 2 weeks prior to the regular scheduled meeting in order to be placed on the agenda for the next meeting.

1. PHOTOGRAPHS - Photographs of your building and neighboring buildings must accompany your application.

2. TYPE OF WORK PROPOSED - Check all that apply. Please bring any samples or manufactures specifications for products you will use in this project.

- Trim and decorative woodwork
Siding and Masonry
Roofing, gutter and downspout
Windows, doors, and associated hardware
Storm windows and storm doors
Shutters and associated hardware
Paint (Submit color chips - HARB only)
Skylights
Metal work
Light fixtures
Signs
Demolition
Other

3. DRAWINGS OF PROPOSED WORK - Required drawings must accompany your application. Please submit ONE ORIGINAL AND TEN (10) COPIES OF DRAWINGS, PHOTOGRAPHS, APPLICATION FORM, AND ANY SPECIFICATIONS

- Alteration, renovation, restoration (1/4 or 1/8"=1'0" scale drawings required IF walls or openings altered.)
New addition (1/4" or 1/8"=1'0" scale drawings: elevations, floor plans, site plan)
New building or structure (1/4" or 1/8"=1'0" scale drawings: elevations, floor plans, site plan)
Demolition, removal of building features or building (1/4" or 1/8"=1'0" scale drawings: elevation of remaining site and site plan)
A scale drawing, with an elevation view, is required for all sign submittals

4. DESCRIBE PROJECT - Describe any work checked in #2 and #3 above. Attach additional sheets as needed.
Replace lighting in Driveway/parking area, back steps, side porch.
ADD exterior lighting to carriage house.

5. APPLICANT'S SIGNATURE [Signature] DATE: 5/23/21

72 E Market St  
Lighting Project



1  
Replace with Harbor Row 4 Light Pendant





# KICHLER

Products Lighting Ideas Tips & Guides For Professionals Why Kichler New Collections

Home > Products > Outdoor Lighting > Outdoor Hanging Lights

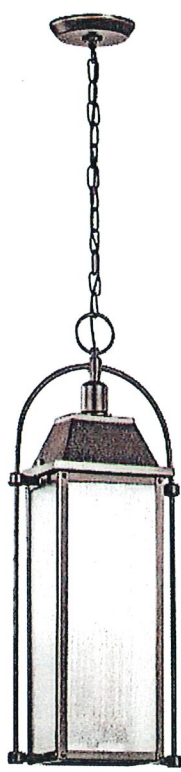
Add to Favorites | Share

## HARBOR ROW COLLECTION

### Harbor Row™ 4 Light Pendant Olde Bronze®

\$479.99\*

497180Z (Olde Bronze)



Light for side porch

★★★★★ [Write a review](#) [Ask a question](#)

This 4 light outdoor pendant from the Harbor Row™ collection has an updated traditional design inspired by classic carriage lanterns, featuring a clear, seeded glass for a highly textured appearance and brass candle accents for a warm glow.

FINISH: Olde Bronze



FIND LOCAL DEALERS

AVAILABLE AT THESE ONLINE RETAILERS





TECHNICAL SPECIFICATIONS [Download Spec Sheet PDF](#)



### Dimensions

Base Backplate	5.12 DIA.
Chain/Stem Length	72"
Weight	7.30 LBS
Height	25.75"
Length	10.50"
Overall Height	100.00"
Width	6.00"

### Housing

Diffuser Description	Clear Seeded
Primary Material	ALUMINUM

### Light Source

Bulb Product ID	4064CLR
Lamp Included	Not Included
Lamp Type	B
Light Source	Incandescent
Max or Nominal Watt	60W
# of Bulbs/LED Modules	4
Socket Type	CAND

### Mounting/Installation

Interior/Exterior	Exterior
Location Rating	Damp
Mounting Style	Chain Hung
Mounting Weight	4.18 LBS

### Product/Ordering Information

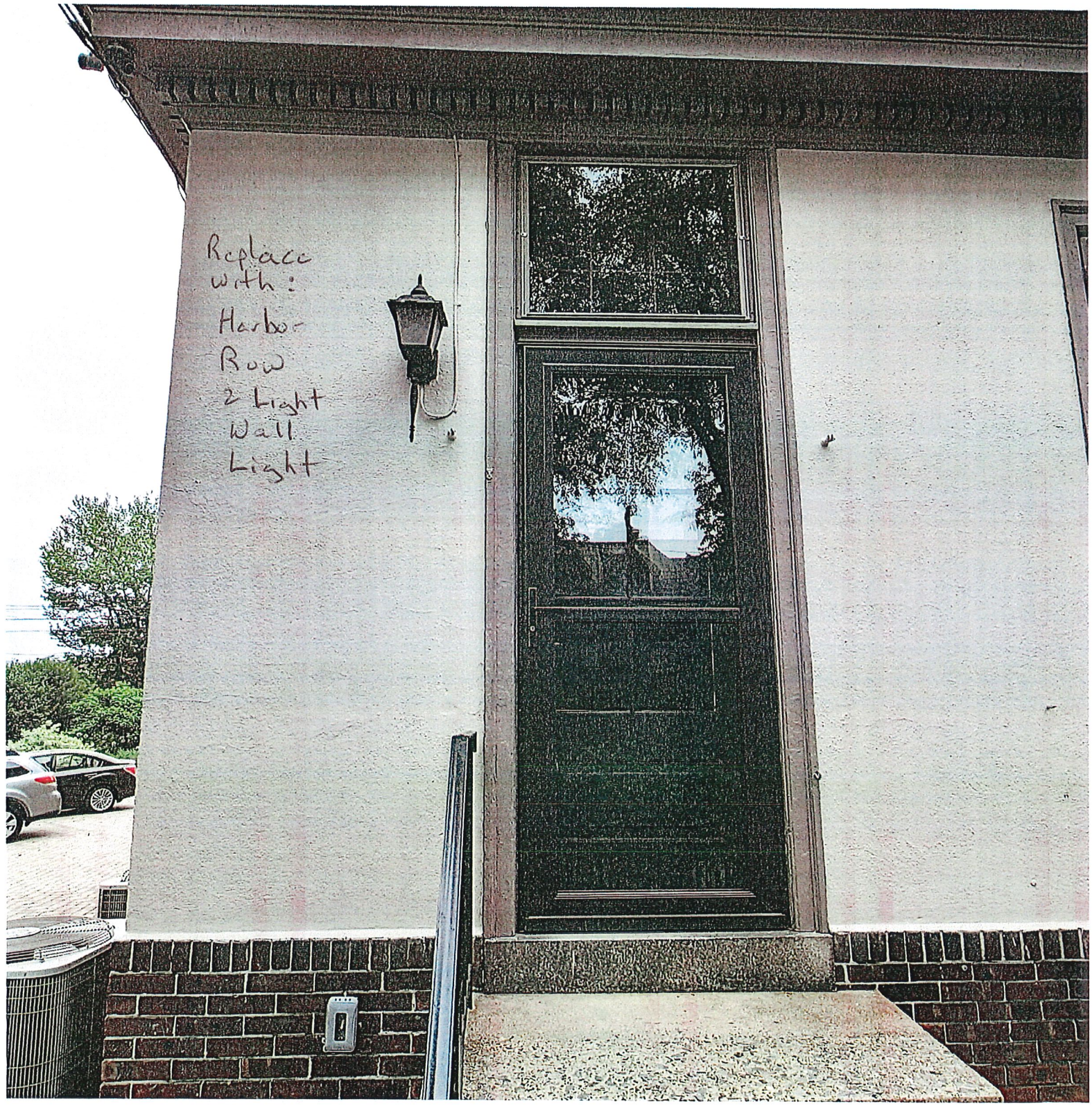
Finish	Olde Bronze
UPC	783927490009

DOCUMENTS



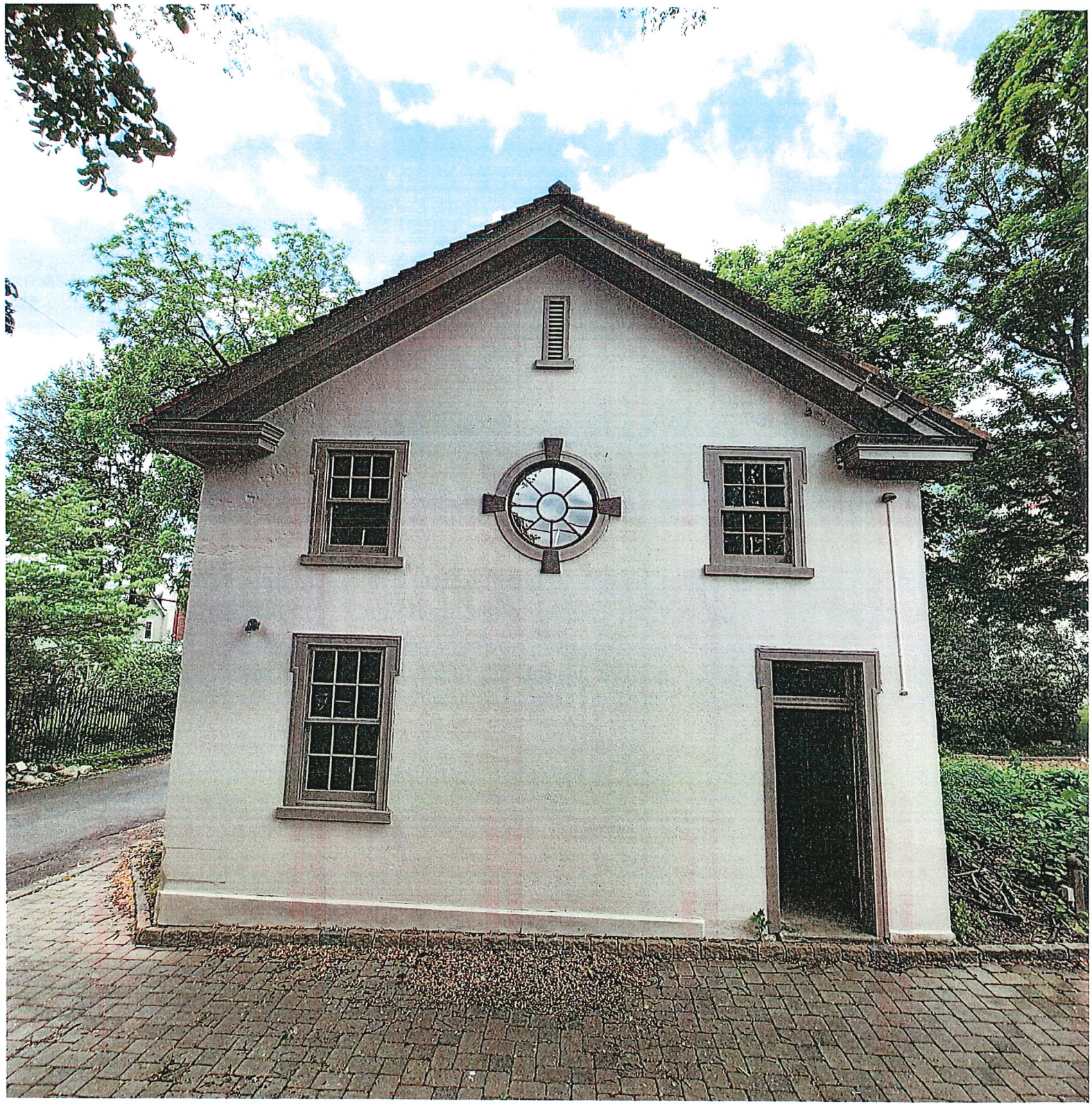


Replace  
with:  
Harbor  
Row  
2 Light  
Wall  
Light





ADD One Harbor Row 2 Light Wall Light





A-00 two Harbor Row 2 Light Wall Lights





# KICHLER.

[Products](#) [Lighting Ideas](#) [Tips & Guides](#) [For Professionals](#) [Why Kichler](#) [New Collections](#)

Home > Products > Outdoor Lighting > Outdoor Wall Lights > Outdoor Wall Lights (No Arms)

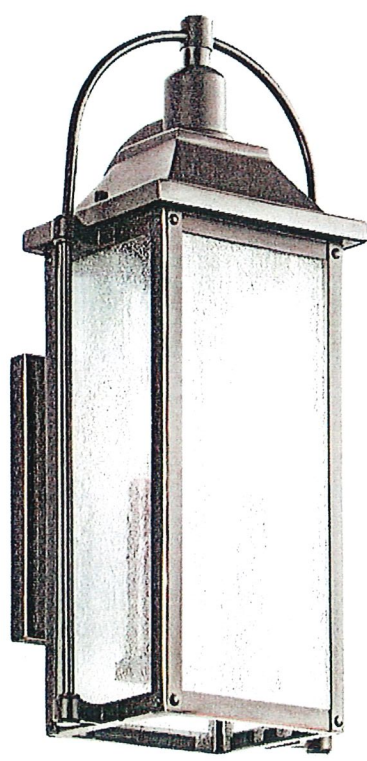
[Add to Favorites](#) | [Share](#)

## HARBOR ROW COLLECTION

### Harbor Row™ 2 Light Wall Light Olde Bronze®

**\$309.99\***

49714OZ (Olde Bronze)



Light for :  
1) Back Door  
2) Garage Man Door  
3) Garage Door (2)

★★★★★ 5.0 (2) [Write a review](#) [Ask a question](#)

This 2 light outdoor wall lantern from the Harbor Row™ collection has an updated traditional design inspired by classic carriage lanterns, featuring a clear, seeded glass for a highly textured appearance and brass candle accents for a warm glow.

FINISH: Olde Bronze



[FIND LOCAL DEALERS](#)

[AVAILABLE AT THESE ONLINE RETAILERS](#)



TECHNICAL SPECIFICATIONS [Download Spec Sheet PDF](#)



### Dimensions

Base Backplate	4.50 X 7.50
Extension	7.75"
Weight	5.19 LBS
Height from center of Wall opening (Spec Sheet)	12.00"
Height	18.50"
Width	8.25"

### Housing

Diffuser Description	Clear Seeded
Primary Material	ALUMINUM

### Light Source

Bulb Product ID	4064CLR
Lamp Included	Not Included
Lamp Type	B
Light Source	Incandescent
Max or Nominal Watt	60W
# of Bulbs/LED Modules	2
Socket Type	CAND

### Mounting/Installation

Interior/Exterior	Exterior
Location Rating	Wet
Mounting Style	Wall Mount

### Product/Ordering Information

Finish	Olde Bronze
UPC	783927490047

DOCUMENTS



IS-49714-CB

[PDF](#)

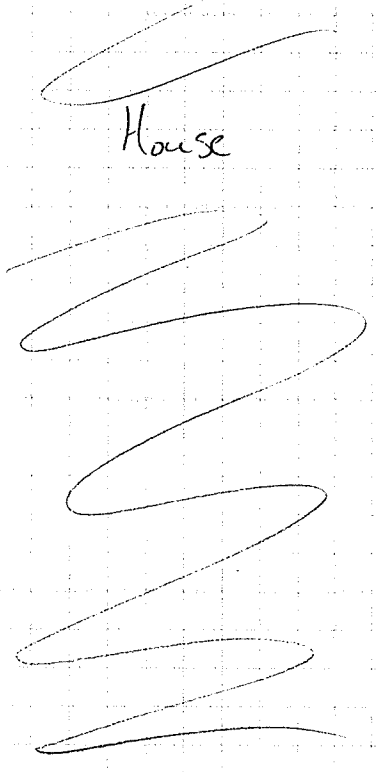
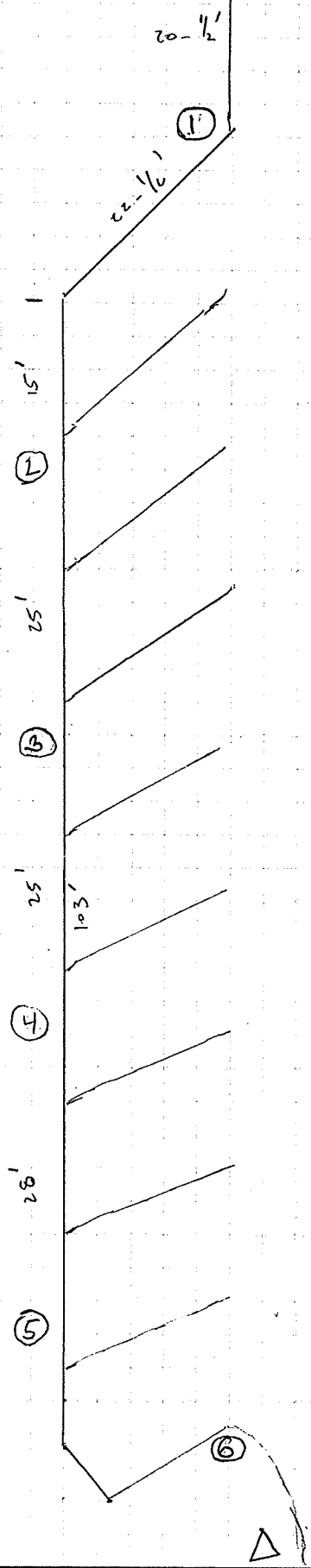


1" = 15'

Entrance  
18 ft

○ = Current Light Location  
△ = New Light Location  
#s 1 to 5 remain  
in same place  
# 6 move to △

Ca. 150' Sidewalk  
to Carriage House



Carriage House



















# KICHLER.

Products Lighting Ideas Tips & Guides For Professionals Why Kichler New Collections

Home > Products > Outdoor Lighting > Outdoor Post Lights

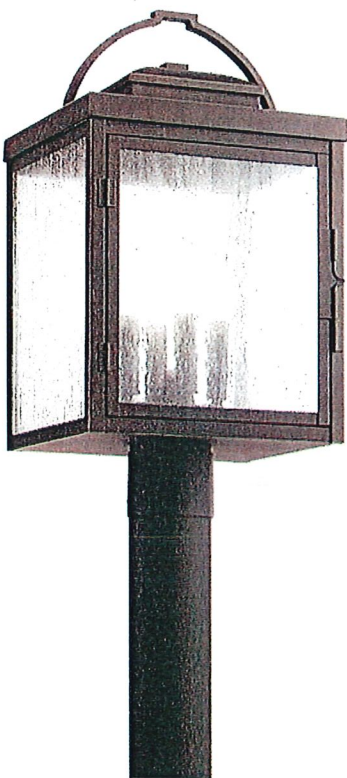
Add to Favorites | Share

### CARLSON COLLECTION

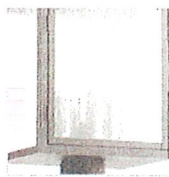
## Carlson™ 19.5" 4 Light Post Light with Clear Seeded Glass Rubbed Bronze

\$234.99\*

59013RZ (Rubbed Bronze)



Lights for parking area #1 to #5



★★★★★ [Write a review](#) [Ask a question](#)

The Carlson™ 19.5" 4 light outdoor post light features a classic look with its lantern style in Rubbed Bronze finish and clear seeded glass. Inspired by the early American style, it is sleek and stately. A perfect addition in several aesthetic outdoor environments, including traditional and transitional.

FINISH: Rubbed Bronze





FIND LOCAL DEALERS

AVAILABLE AT THESE ONLINE RETAILERS



DESCRIPTION

The Carlson 4 light outdoor post light with Rubbed Bronze finish and clear seeded glass deliver an American style feel to the exterior of a home. This outdoor light post measures 10.25" in width and 19.5" in body height. It requires four 60W max candelabra bulbs (not included).

- Offers a classic design that works well with traditional and transitional décor.
- The 4 light Carlson outdoor post light sets a quintessential tone in almost any entryway.
- Takes four medium E26 up to 60W candelabra bulb equivalent
- The clear seeded glass provide a beautiful, ambient lighting to the entire room. Think of it as a foundation or a canvas upon which to paint a distinctive lighting picture. It's a beautiful light source in your living space.
- CSA UL Listed Wet for open or direct exposure to sun, rain or water spray and is ideal for pergolas, lanais, open porches and more. It has a highly durable finish against rain or snow and feature stainless steel mounting hardware.

Cleaning instructions: Turn off electric current before cleaning. Clean metal components with a soft cloth moistened with a mild liquid soap solution. Wipe clean and buff with a very soft dry cloth. Under no circumstances should any metal polish be used, as its abrasive nature could damage the protective finish placed on the metal parts. Never wash glass shades in an automatic dishwasher. Instead, line a sink with a towel and fill with warm water and mild liquid soap. Wash glass with a soft cloth, rinse and wipe dry.

TECHNICAL SPECIFICATIONS [Download Spec Sheet PDF](#)

Dimensions

Weight	9.10 LBS
Height	19.50"
Width	10.25"

Housing

Diffuser Description	Clear Seeded
Primary Material	ALUMINUM

Light Source

Bulb Product ID	4064CLR
Lamp Included	Not Included
Lamp Type	B



# KICHLER.

Products Lighting Ideas Tips & Guides For Professionals Why Kichler New Collections

Home > Products > Outdoor Lighting > Accessories > Posts

Add to Favorites | Share

## 3" x 84" Direct Burial Ladder Rest Post Architectural Bronze

\$104.95\*

9505AZ (Architectural Bronze)



Post For Lights  
#1 to #5

★★★★★ 4.0 (1) [Write a review](#) [Ask a question](#)

Outdoor Light Posts - Dia. 3", Hgt. 84" - Steel Post with ladder rest. Kichler's accessories provide maximum design flexibility. Select mounting hardware, electrical and nonelectrical accessories to complete your landscape lighting system.

FINISH: Architectural Bronze



FIND LOCAL DEALERS

AVAILABLE AT THESE ONLINE RETAILERS





TECHNICAL SPECIFICATIONS [Download Spec Sheet PDF](#)



### Dimensions

Weight	8.74 LBS
Height	84.00"
Width	3.00"

### Housing

Primary Material	ALUMINUM
------------------	----------

### Mounting/Installation

Interior/Exterior	Exterior
Location Rating	Accessory, Listing Not Required

### Product/Ordering Information

Finish	Architectural Bronze
UPC	783927950541

### DOCUMENTS



High Res Images 49505WZC	<a href="#">ZIP</a>
High Res Images 9505AZ	<a href="#">ZIP</a>
Spec Sheet	<a href="#">Download PDF</a> <a href="#">View PDF</a>

### WARRANTY



Outdoor Lighting Warranty	<a href="#">View</a>
---------------------------	----------------------

## SEE IT IN ACTION #KICHLER

Don't take our word for it. Let our customers show you how Kichler Lighting is helping to shape their space.

UPLOAD A PHOTO



### REVIEWS

[WRITE A REVIEW](#)



# KICHLER.

Products Lighting Ideas Tips & Guides For Professionals Why Kichler New Collections

Home > Products > Outdoor Lighting > Outdoor Post Lights

Add to Favorites | Share

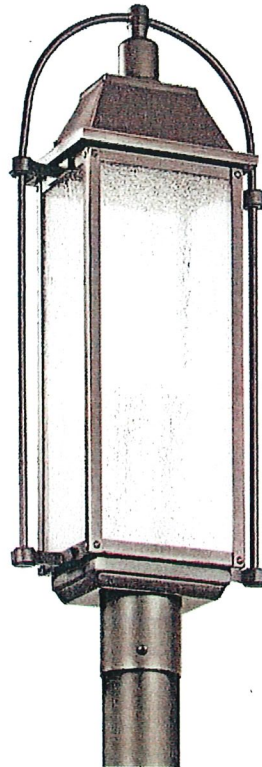
## HARBOR ROW COLLECTION

### Harbor Row™ 4 Light Post Light Olde Bronze®

\$479.99\*

497170Z (Olde Bronze)

Parking Area  
Light # 6



★★★★★ [Write a review](#) [Ask a question](#)

This 4 light outdoor post lantern from the Harbor Row™ collection has an updated traditional design inspired by classic carriage lanterns, featuring a clear, seeded glass for a highly textured appearance and brass candle accents for a warm glow.

FINISH: Olde Bronze



FIND LOCAL DEALERS

AVAILABLE AT THESE ONLINE RETAILERS





TECHNICAL SPECIFICATIONS

[Download Spec Sheet PDF](#)



### Dimensions

Weight	7.13 LBS
Height	27.25"
Length	10.50"
Width	6.00"

### Housing

Diffuser Description	Clear Seeded
Primary Material	ALUMINUM

### Light Source

Bulb Product ID	4064CLR
Lamp Included	Not Included
Lamp Type	B
Light Source	Incandescent
Max or Nominal Watt	60W
# of Bulbs/LED Modules	4
Socket Type	CAND

### Mounting/Installation

Interior/Exterior	Exterior
Location Rating	Wet
Mounting Style	Post Mount
Mounting Weight	3.94 LBS

### Product/Ordering Information

Finish	Olde Bronze
UPC	783927490016

DOCUMENTS



High Res Images 49717OZ	<a href="#">ZIP</a>
IS-49717.pdf	<a href="#">PDF</a>



# KICHLER

Products Lighting Ideas Tips & Guides For Professionals Why Kichler New Collections

Home > Products > Outdoor Lighting > Accessories > Posts

Add to Favorites | Share

## 12.75" x 72" Cast Aluminum Post Olde Bronze®

\$529.95

95100Z (Olde Bronze)

Post for light # 6



★★★★★ [Write a review](#) [Ask a question](#)

Constructed from aluminum, this versatile Olde Bronze finished outdoor post is a lighting support necessity.

FINISH: Olde Bronze



FIND LOCAL DEALERS

AVAILABLE AT THESE ONLINE RETAILERS





TECHNICAL SPECIFICATIONS [Download Spec Sheet PDF](#)



### Dimensions

Weight	15.00 LBS
Height	72.00"
Width	12.75"

### Housing

Primary Material	ALUMINUM
------------------	----------

### Mounting/Installation

Interior/Exterior	Exterior
Location Rating	Accessory, Listing Not Required

### Product/Ordering Information

Finish	Olde Bronze
UPC	783927185875

### DOCUMENTS



IS-9510-CB	<a href="#">PDF</a>
IS-9510-US	<a href="#">PDF</a>
High Res Images 49510BST	<a href="#">ZIP</a>
High Res Images 9510BK	<a href="#">ZIP</a>
Spec Sheet	<a href="#">Download PDF</a> <a href="#">View PDF</a>

### WARRANTY



Outdoor Lighting Warranty	<a href="#">View</a>
---------------------------	----------------------

### SEE IT IN ACTION #KICHLER

Don't take our word for it. Let our customers show you how Kichler Lighting is helping to shape their space.

UPLOAD A PHOTO