

**ELEVATIONS**  
 REVISION 3-23-2021 FOR HARB SUBJECT  
 REVISION 8-9-2021 ADD PARTIAL ELEVATION

02-11-21

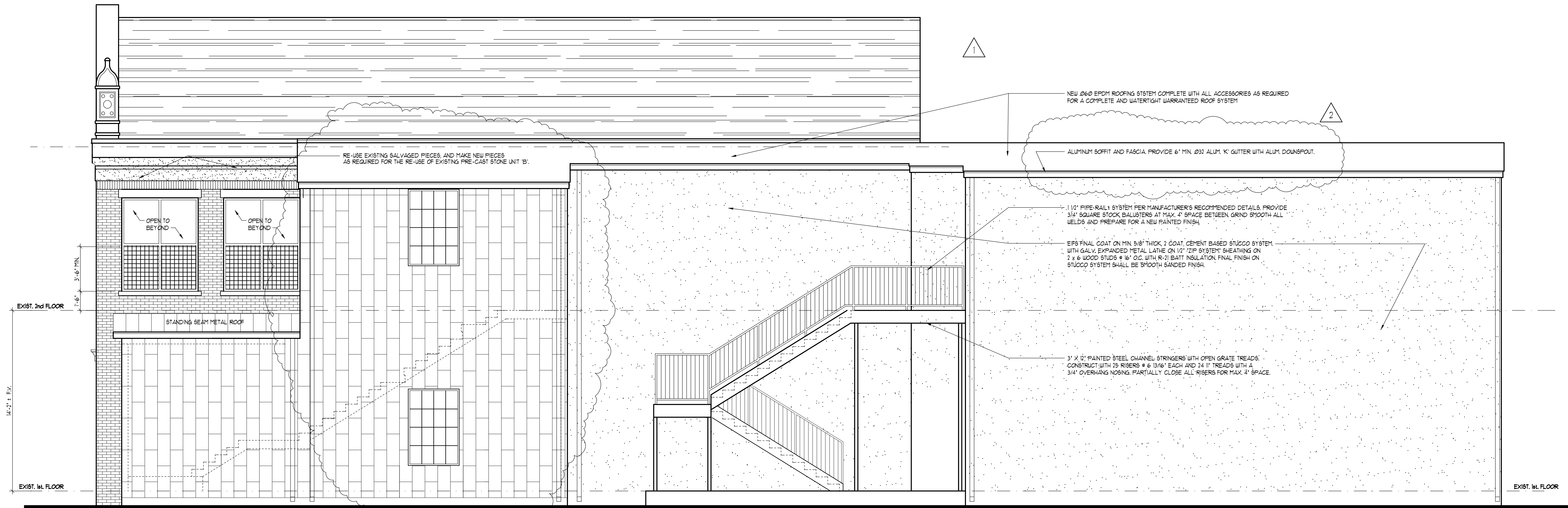
**LEE ARCHITECTURAL ASSOCIATES**  
 310 S. NEW ST. BETHLEHEM, PA 18015  
 PH: (610) 865-6666 FAX: (610) 865-0566

PROJ. #20011

PROPOSED NEW ADDITION AND RENOVATIONS FOR:

**215-217 BROADWAY BAR & GRILL**  
 215-217 BROADWAY • BETHLEHEM • NORTHAMPTON COUNTY PA

**A3.1**



- 240 ALUM. COPING WITH 4" DRIP LEG AND SLOPED TOP
- RE-USE EXISTING SALVAGED PIECES, AND MAKE NEW PIECES AS REQUIRED FOR THE RE-USE OF EXISTING PRE-CAST STONE UNIT 'B'.
- CAST STONE LINTEL 'C' TO MATCH EXISTING UNITS. TYP FOR 4.
- PROVIDE A FULL ALUMINUM FRAME WINDOW UNIT WITH NO GLASS. INFILL GLASS GROOVE FLUSH AND PROVIDE A 4" x 4" STAINLESS STEEL WIRE GRID IN LOWER FRAMES AS SHOWN. TYP. FOR 4.
- THERMALLY BROKEN ALUMINUM FRAME WINDOW WITH CLEAR INSULATED GLAZING. TYPICAL FOR ALL NEW WINDOWS ON THIS PROJECT.
- CONTRACTOR SHALL SALVAGE AND RE-USE AS MANY EXISTING BRICK AS POSSIBLE IN ORDER TO USE IN THE NEW INSTALLATION. PROVIDE NEW BRICK TO MATCH AS NEEDED. COORDINATE WITH ARCHITECT FOR EXACT LOCATIONS OF SALVAGED BRICK. PROVIDE A REVIEW OF NUMBER OF BRICK AVAILABLE. MORTAR COLOR AND POINTING SHALL MATCH THE EXISTING AT 211 BROADWAY.
- RE-USE EXISTING SALVAGED PIECES, AND MAKE NEW PIECES AS REQUIRED FOR THE RE-USE OF EXISTING PRE-CAST STONE UNIT 'A'.
- INSULATED METAL PANEL, RAIN SCREEN SYSTEM IN FLAT BLACK FINISH. INSTALL IN STRICT ACCORDANCE WITH ALL MANUFACTURER'S RECOMMENDATIONS.
- THERMALLY BROKEN ALUMINUM FRAME WINDOW WITH CLEAR INSULATED GLAZING.
- MATTE BLACK 12" x 24" PORCELAIN TILE ON CEMENT BOARD. PROVIDE EPOXY BONDING CEMENT AND EPOXY BASE GROUT IN MATCHING BLACK COLOR.
- NEW THERMALLY BROKEN ALUMINUM FRAME BOLDING DOOR ASSEMBLY WITH GRID PATTERN TO MATCH THE EXISTING ADJACENT DOOR UNIT. PROVIDE ALL REQUIRED ACCESSORIES FOR A COMPLETE AND OPERATING UNIT. INSTALL IN STRICT ACCORDANCE WITH ALL MANUFACTURER'S RECOMMENDATIONS.

