

**EXISTING:**



**North/Front Elevation**

SCALE: 1/8" = 1'-0"



**West/Side Elevation**

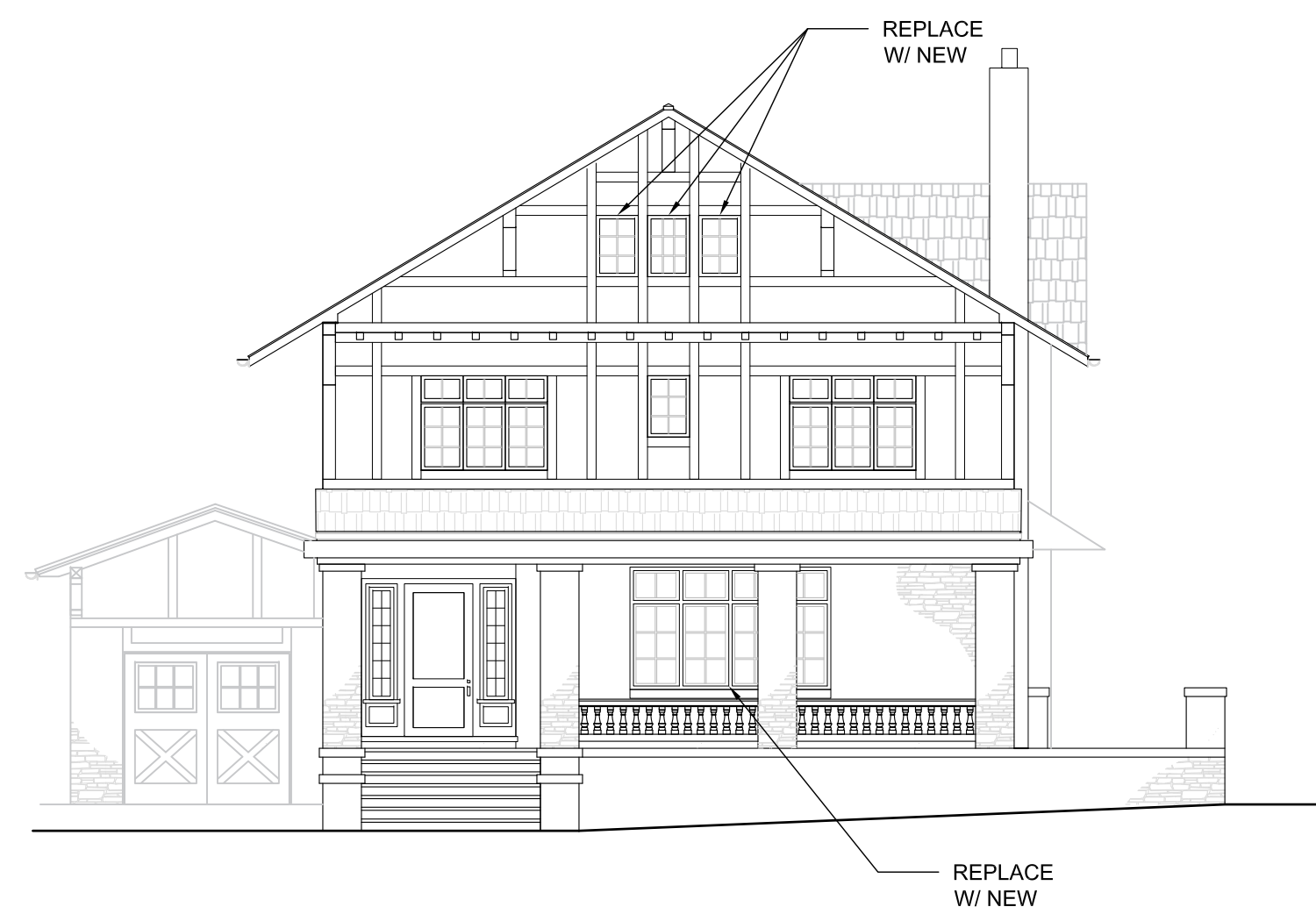
SCALE: 1/8" = 1'-0"



**Rear/South Elevation**

SCALE: 1/8" = 1'-0"

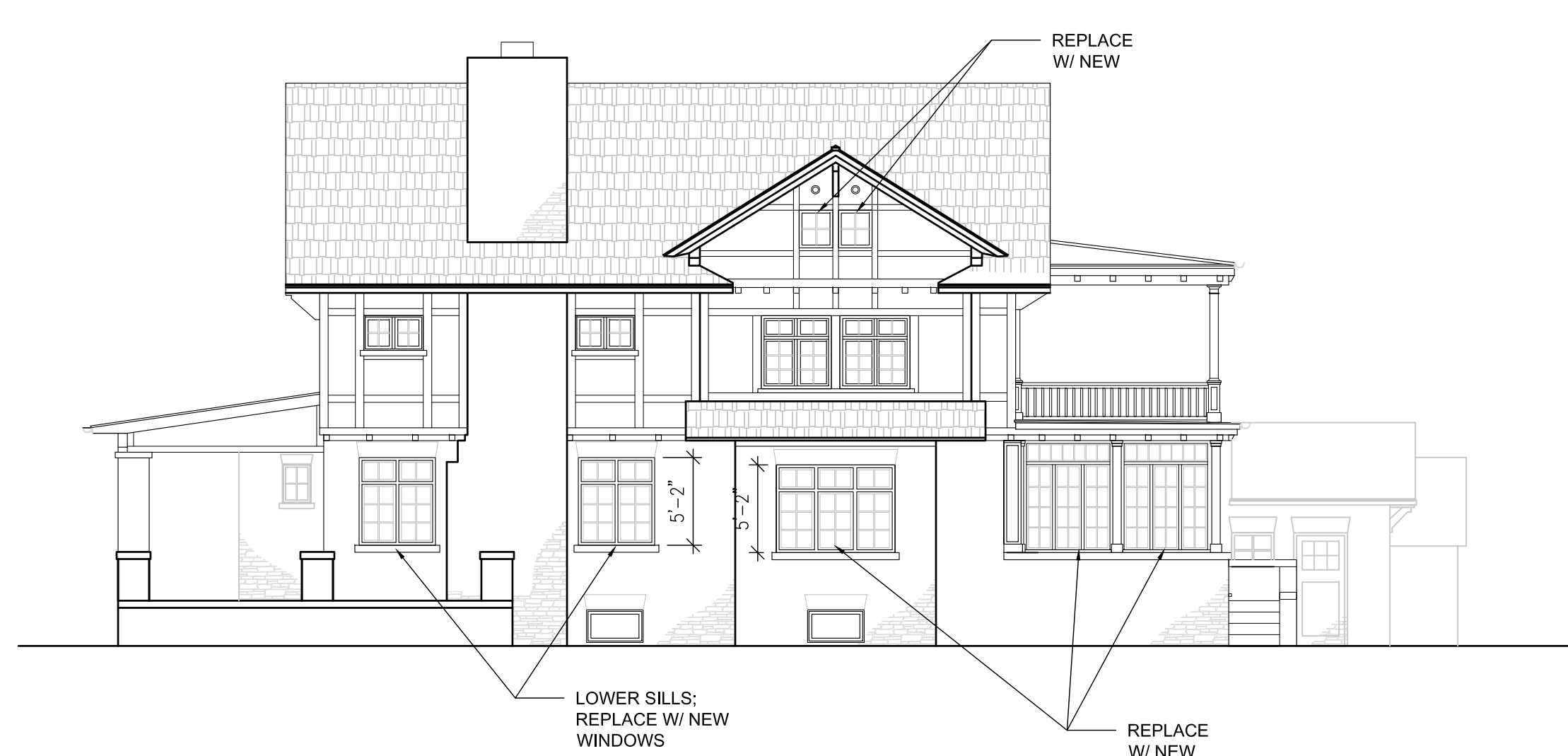
**PROPOSED:**



**North/Front Elevation**

SCALE: 1/8" = 1'-0"

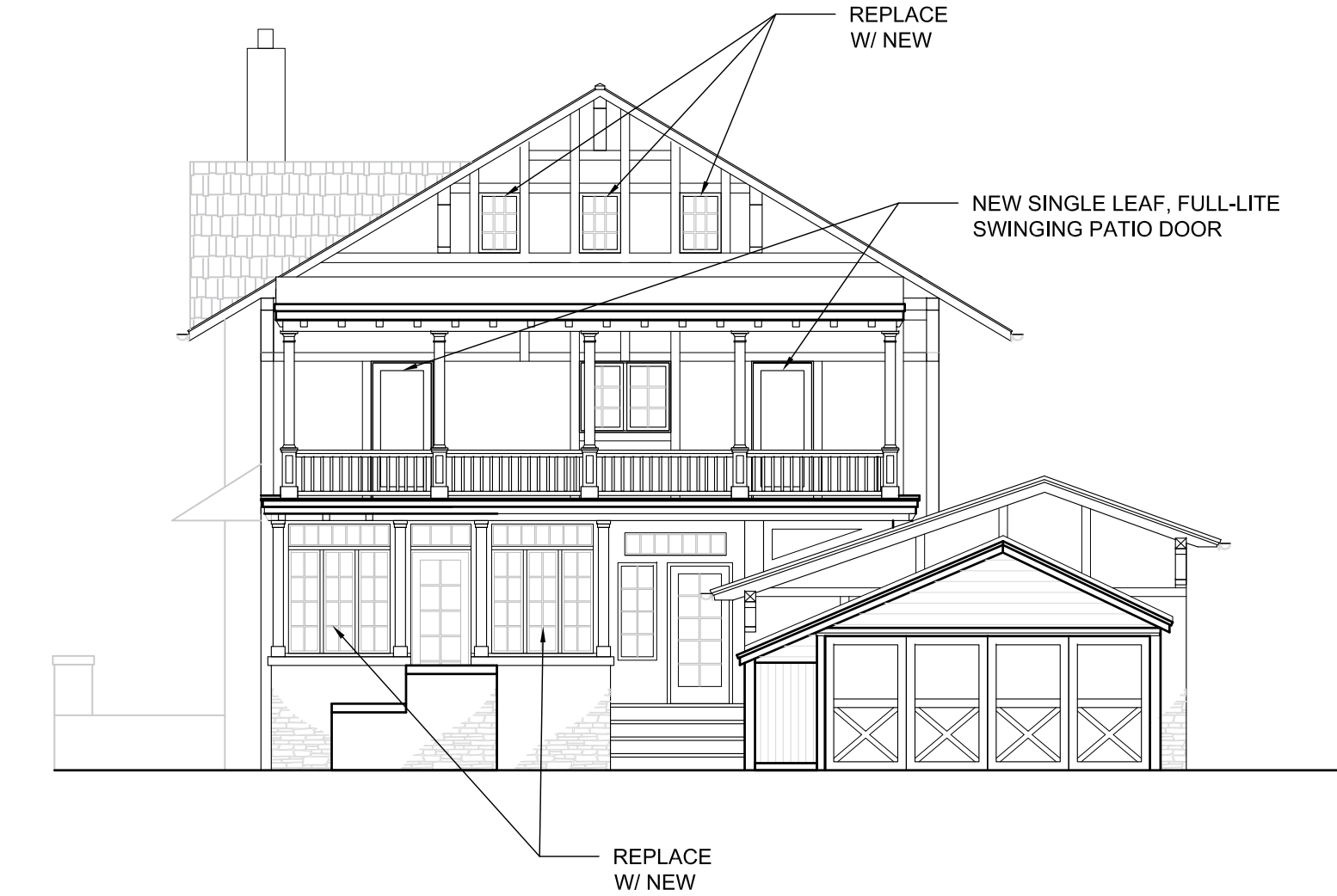
A



**West/Side Elevation**

SCALE: 1/8" = 1'-0"

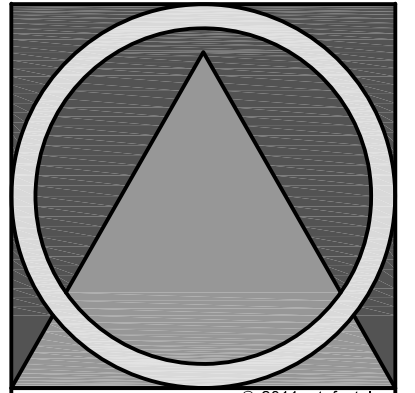
B



**Rear/South Elevation**

SCALE: 1/8" = 1'-0"

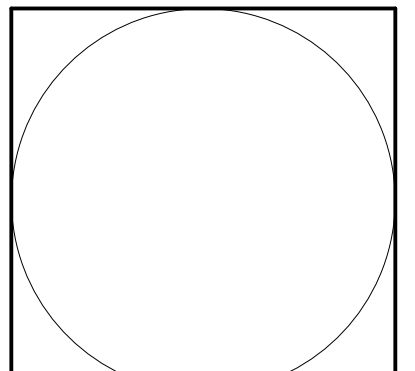
C



**Artefact, Inc.**  
 CHRISTINE USSLER, AIA  
 26-28 EAST THIRD STREET  
 BETHLEHEM, PA 18015  
 610.861.0235 PHONE  
 610.861.0275 FAX  
 www.artefactarchitecture.com  
 Architecture |  
 Sustainable Design |  
 Preservation and Planning |

ADDITIONS & ALTERATIONS TO:  
**REED RESIDENCE**  
 925 Prospect Ave.  
 Bethlehem | PA | 18018

**ELEVATIONS**



PROJECT NUMBER:	
DRAWN BY:	CL
CHECKED BY:	CU
DATE:	09.21.21
REVISION DATE:	

