



Photo Credit: Lehigh Valley with Love Media

**IN THIS ISSUE:**

- 7** Bethlehem Service Center
- 12** Northside Alive
- 18** Recreation Programs and Events • Summer 2024





# IN THIS ISSUE...

- 04 Mayor's Address
- 05 A Note From City Council
- 07 Bethlehem Service Center
- 07 Bethlehem Fire Department
- 08 Bethlehem Police Department
- 12 Department of Community and Economic Development
- 14 Resources and Assistance
- 15 The Department of Water and Sewer Resources
- 16 City of Bethlehem Taxes
- 17 Public Works
- 18 Recreation Programs and Events, Summer 2024
- 21 Bethlehem Public Library
- 22 Street Sweeping Schedule
- 22 Yard Waste Drop Off
- 23 Yard Waste Curbside Pickup Schedule
- 23 2024 Holiday Curbside Recycling Collection Schedule
- 23 Theis/Cornfeld Recycling Center
- 25 Bethlehem Area School District
- 25 Bethlehem Food Co-op
- 26 Southside Arts District Events Schedule
- 26 Downtown Bethlehem Association & Bethlehem Chamber of Commerce Events
- 27 Touchstone Theatre
- 27 Rose Garden
- 27 The Bethlehem Fine Arts Commission Events



As a requirement of the Municipal Waste Planning Recycling and Waste Reduction Act, the City of Bethlehem is required to notify residents of our recycling programs twice a year. Please enjoy this newsletter and then place it in your recycling container. Or better yet, pass it along for someone else to learn about all the good things that are happening in the City of Bethlehem.

## City of Bethlehem Directory




|  |                     |
|--|---------------------|
| <b>Bethlehem Service Center</b> .....                  | <b>610-865-7000</b> |
| • 10 East Church Street, Bethlehem, PA 18018           |                     |
| Hours: 8 am – 4:30 pm, Monday – Friday                 |                     |
| <a href="http://bethlehem-pa.gov">bethlehem-pa.gov</a> |                     |
| • Health Department.....                               | 610-865-7083        |
| • Public Works.....                                    | 610-865-7050        |
| • Water and Sewer .....                                | 610-865-7207        |
| • Recycling Department.....                            | 610-865-7082        |
| • Payment Center .....                                 | 610-865-7046        |
| • Pothole Hotline .....                                | 610-865-7053        |
| • Graffiti Hotline .....                               | 610-865-7065        |
| • Construction and Permitting.....                     | 610-865-7091        |
| • Recreation Department.....                           | 610-865-7081        |
| • Community and Economic Development .....             | 610-865-7085        |
| • EMS / Fire / Police Emergency.....                   | 911                 |

## Email Alerts

Register to receive emails of critical City updates, news and alerts at [bethlehem-pa.gov](http://bethlehem-pa.gov). Click “Online Services,” then “Sign Up for City Alerts.”

## Follow Us on Social Media

Stay up to date on current events and announcements:

-  City of Bethlehem
-  [cityofbethlehempa](https://www.instagram.com/cityofbethlehempa)
-  [@CityBethlehem](https://twitter.com/CityBethlehem)

## Bethlehem Mayor

J. William Reynolds

## City Council Members

Michael G. Colón, *President of Council*  
Rachel Leon, *Vice President of Council*  
Hillary Kwiatek    Colleen Laird    Grace Crampsie Smith  
Kiera Wilhelm    Bryan G. Callahan

Contact your Council Member directly through the Council webpage at [bethlehem-pa.gov/City-Government/City-Council/Overview](http://bethlehem-pa.gov/City-Government/City-Council/Overview).

## 2024 City Council Meeting Dates

All Council Meetings begin at 7 pm unless otherwise specified.

- |                     |                       |
|---------------------|-----------------------|
| • January 2 and 16  | • July 2 and 16       |
| • February 6 and 20 | • August 6* and 20    |
| • March 5 and 19    | • September 3 and 17  |
| • April 2 and 16    | • October 1 and 15    |
| • May 7 and 21      | • November 6** and 19 |
| • June 4 and 18     | • December 3 and 17   |

\*5:30 start due to Musikfest

\*\*Due to November 5, Election Day

## Are you interested in supporting your community?

Please email [marketing@ksand.com](mailto:marketing@ksand.com) for more information on how your ad can be featured in Bethlehem's magazine. This publication reaches over 32,000 addresses and is a great way to promote your business.

## Miracles delivered.

When you choose LVHN for your pregnancy journey, you'll get nothing but the best, from conception through delivery. LVHN is the only health network in the region with access to specialized high-risk pregnancy care, the highest level NICU and a children's hospital built just for kids, so you can feel confident in keeping you and your developing baby safe and healthy.

[LVHN.org/pregnancy](http://LVHN.org/pregnancy)

Baby Calliope delivered by  
**LVPG Obstetrics and Gynecology**



Your health deserves a partner.



# Mayor's Address to the City of Bethlehem



Happiness is about finding two things.

The first one is the feeling of safety and stability. We want a consistency in our lives that allows us not to worry about too much change. We want things we can count on. We don't want to worry about meeting our basic needs, friends, love or a way to pay the bills.

The second thing we desire is to feel hopeful about tomorrow. We want a future of excitement and progress and to feel the best is yet to come. Things are good now, but we know they are headed in an even better direction. When those two feelings define us, we are living well.

Cities possess the same dynamic. If a community feels a sense of stability and optimism, people want to call that place home. Bethlehem continues to be one of those cities.

2023 proved to be another year when our residents could rely on the things that have always defined our community. We remain the safest mid-sized city in Pennsylvania. Our economic revitalization continues as our private sector welcomes over \$230 million of private investment (in construction costs alone) and the thousands of jobs that comes with that investment.

Bethlehem Area School District continues to be the best school district around. We continue to attract (and hold onto) creative, diverse and dynamic individuals who are leading our institutional, cultural, economic and arts sectors. Musikfest had its biggest year yet as we welcomed 1.3 million people to experience the best of our community. To cap off the year, we saw record numbers of people come to Bethlehem to take in the holiday season.

Stability is simply one of our defining characteristics.

Within City Hall, we experienced another year of big news and even bigger success stories. Bethlehem's financial health continues to outpace every other city in Pennsylvania. We made record investments in our parks as we built a new Fairview Park in the heart of West Bethlehem; announced the upcoming \$1 million transformation of Friendship Park in north Bethlehem in 2024; and took the next step toward completing the South Bethlehem Greenway, which will connect 15 miles of contiguous trail between Bethlehem and Quakertown.

**Things are good now, but we know they are headed in an even better direction.**

We hosted U.S. Sen. Bob Casey and U.S. Rep. Susan Wild as we launched our Community Recovery Fund, which saw City Hall use American Rescue Plan dollars to make systemic investments in 27 nonprofit organizations in an effort to further our recovery from the pandemic.

The city also invested \$4.5 million in our general and capital budgets to buy new police, fire and paramedic vehicles and equipment to support our first responders. Despite a nationwide shortage of officers, our police department has been able to recruit and hire 16 officers over the past year as we continue to successfully attract officers to a department that is second to none.

Recently, our dream to transform West Broad Street from a car-centric thoroughfare into a safe street built for people became a reality when the U.S. Department of Transportation selected Bethlehem for an award of \$10 million to cover streetscape improvements over a mile and a half stretch. Bethlehem was one of only two Pennsylvania cities to receive this funding.

These are but a few of the success stories coming out of City Hall in 2023.

It would be easy to point to all of these great stories and determine that we have, in fact, achieved our version of citywide happiness. But while many of us enjoyed a wonderful 2023 and are incredibly optimistic for 2024, many residents continue to struggle as victims of a nationwide housing crisis to which Bethlehem is not immune.

Soaring sales and rental prices (exacerbated by a high demand to live in our city and a lack of housing supply throughout the Lehigh Valley) have created a crisis that has placed many of our families into strained financial situations.

In City Hall, we are continuing to focus on addressing the housing crisis over the short and long term. In October 2023, we released Opening Doors, our housing strategy for the next five years, which will leverage our American Rescue Plan resources to help people stay in their homes or find a safe and affordable place to live.

Bethlehem has always been a place that takes the idea of opportunity seriously. Opening Doors is about creating opportunities for current and future residents and families who — like us — are looking to call Bethlehem home.

Bethlehem has provided many of us with the stability and optimism for which we all strive. 2023 was another year when thousands of us experienced happiness personally and together as part of a true community.

People ask me all the time "What makes Bethlehem special?" It is that we understand that the two things we all strive for are stability and optimism. 2023 was a big year in that regard. 2024 can be even better. Happiness. For all of us.

*J. William Reynolds*

**If a community feels a sense of stability and optimism, people want to call that place home. Bethlehem continues to be one of those cities.**







# A NOTE FROM CITY COUNCIL

## 2023 Council President's Report, January 2, 2024

The Council President's Report begins most years with statistics. For instance, I can tell you that in 2023, Council held 24 regular meetings and 17 committee and budget sessions resulting in the adoption of 259 Resolutions and passage of 51 Ordinances. But the real impact stretches well beyond these numbers.

With the pandemic behind us in 2023, it was time to move on and get back to business. Bethlehem is making the most of what is considered a once-in-a-lifetime opportunity to rebound and thrive thanks to \$34.4 million in appropriations through the American Rescue Plan Act. This federal money was announced in 2021 for pandemic recovery, and the City has seen fit to use it in several ways: recover revenue loss, invest in infrastructure and establish an affordable housing fund and a homeless initiative.



**Council eagerly supported the Administration's efforts in recent years to pay down debt, realizing that fiscal restraint now will pay dividends in the years to come.**

— *Michael G. Colón*

Projects funded by these federal dollars surged ahead in 2023. Some, such as street paving, are complete. Others are less immediate and require thorough planning. To this end, Council enthusiastically supported a new initiative to combat homelessness and the affordable housing crisis by conducting four Community Development Committee meetings in 2023 to review the City Housing Needs Assessment and Strategic Plan submitted by the City's Department of Community and Economic Development. Plans are underway to create at least one homeless shelter and provide affordable housing units. Council continues to encourage these efforts by authorizing millions of dollars in funding and eagerly awaits advanced planning meetings in 2024 as this dream draws closer to reality.

In 2023, Council was similarly enthusiastic to support the application for a \$500,000 HUD Choice Neighborhoods planning grant that could lead the way toward replacing the 196-unit Pembroke Village that was constructed in 1941. The Pembroke Choice Neighborhood Plan will set out a community-led effort for the transformation of the distressed public housing into viable, mixed-income neighborhoods and 400-600 new housing units throughout the area. This is one of many strategies that Council has supported to address housing affordability challenges. Council was additionally supportive of a grant application of up to \$10 million to further fund multiple housing strategies.

Council also has supported and applauded aggressive efforts to obtain grant money by authorizing the hiring of a grant writer. In addition to successful awards and applications still being considered, highlights of these efforts have yielded \$250,000 toward a plan for revitalization of Friendship Park, \$500,000 toward purchasing land to close the gap in the Greenway and, most recently, \$10 million toward transformative infrastructure improvements along West Broad Street.

Council also eagerly supported the Administration's efforts in recent years to pay down debt, realizing that fiscal restraint now will pay dividends in the years to come. Bethlehem has gone from a debt of nearly \$171 million in 2015 to about \$99 million to start 2024. The City has paid down more than \$71 million in nine years. The debt amount is projected to fall to \$55 million by this time in 2028.

In November, Council held three budget hearings. Presentations brought to life the people behind the good work being done rather than just pointing out numbers and statistics. Council heard one success story in particular from Public Works, a series of wise moves that began in 2007 that has saved City taxpayers an estimated \$13 million. The City began by purchasing streetlight poles from PPL instead of paying rental fees. Other money-saving changes included switching to LED lighting for more cost-efficiency. The total savings will only grow thanks to this foresight and wisdom.

That brings us to the close of 2023 and a look ahead to the new year. Tonight, Council will say goodbye to two members: Dr. Paige Van Wirt, who served six years, and Dr. Wandalyne Enix, who served two years in filling an unexpired term. Both served with hard work, passion and distinction. We thank you both for all your efforts and wish you well in your endeavors. Meanwhile, in a few minutes, Council will welcome two members: Bryan Callahan and Colleen Laird. We look forward to your contributions.

**Michael G. Colón • President of Bethlehem City Council**

*Photos from top to bottom:  
Mayor Reynolds meets with Donegan's Leadership Team.*

*The new Fairview Park.*

*Students from Marvine Elementary School decorate the Mayor's Tree on Payrow Plaza.*

*Mayor Reynolds points out some interesting landmarks around City Hall.*

*Mayor Reynolds hosts Senator Bob Casey, U.S. Representative Susan Wild and State Representative Steve Samuelson as the Community Recovery Fund is launched.*



SteelStacks 12pm - Midnight Free to Attend

# ONE EARTH REGGAE FEST






**Saturday, July 6, 2024**

## LONG BEACH DUB ALLSTARS

## F.Y.A.H.

**MIGHTY MYSTIC**  
**SUNDUB**  
**SPACE KAMP WITH TROUBLE CITY ALL-STARS**  
**CULTIVATED MIND**  
**CHEEZY AND THE CRACKERS**  
**JINCHO EL RUSTICO**  
**RAS JEM & UNITY VIBRATION**  
**THE TABERNACLE**  
**SOUND OFF**  
**ELEPHANTS DANCING**  
**MARRISSA JOY**

**DJ MENACE**  
 MC/HOST FOR THE DAY

**DRUM CIRCLE**  
 DURING THE FEST!

More Information at [SteelStacks.org](http://SteelStacks.org)

# Need Insurance?

Text **484-2-INSURE** for a Quick Quote!  
 Family Owned & Operated Since 1956

## D.E. Cressman

INSURANCE AGENCY INC.

AUTO  
HOME  
LIFE  
COMMERCIAL



Bugged About Insurance?  
 Let Us Find You The Best Rate Possible.

**610-433-1568**



Erie  
Insurance

D.E. Cressman Insurance Lehigh Valley

2310 Walbert Avenue

Allentown, PA 18104

[www.choosecressman.com](http://www.choosecressman.com)

Follow us on Facebook @ [www.facebook.com/ChooseCressman](https://www.facebook.com/ChooseCressman)



## KEEPING PEOPLE WARM SINCE 1982

Your destination to complete your fireplace upgrade.

*Kring's offers sales, service, and install on gas, wood, pellet fireplaces, stoves and inserts.*

834 Route 100 North, Bechtelsville  
 4405 Pennsylvania Dr., Schnecksville

# Kring's Hearth & Home

610.224.5050 • [KringOnline.com](http://KringOnline.com)

HIC# PA 065759



The Bethlehem Service Center (BSC) is available for residents to contact for non-emergencies 24 hours a day, seven days a week, 365 days a year.

There are four ways to contact the BSC for non-emergencies.

**Remember, in the event of any type of emergency, DIAL 911.**



The BSC app is **FREE** to download. Open your phone's camera and point at the QR code!

# BETHLEHEM SERVICE CENTER

- 1. Call 610-865-7000.** This number can be reached by house phone line or by cell phone. This will dial directly into the BSC for non-emergency questions/city inquiries or city services.
- 2. Bethlehem Service Center App:** The app is available to download for most cell phones and tablets on either the Play Store or the App Store on your device. Search for "Bethlehem Service Center" or "City of Bethlehem" under Apps, or scan the QR code to the left. Access key information at your fingertips with this easy-to-use mobile application. Receive emergency notifications, submit a service request, find out what to do in Bethlehem, find parking, view bus schedules, pay your bills and much more.
- 3. Email:** The BSC can also be reached via email at: [bethlehemservicecenter@bethlehem-pa.gov](mailto:bethlehemservicecenter@bethlehem-pa.gov).
- 4. City of Bethlehem Web Page and Portal:** Visit [bethlehem-pa.gov](http://bethlehem-pa.gov), click "Online Services" in the main menu, then click "My Account." Here, you will be able to submit a service request.

*Examples of "non-emergency" customer service: dirty water, pot holes that need to be repaired, debris in the street, recycling issues, etc. The BSC will also provide assistance to any City of Bethlehem residents who may have questions or concerns that need to be addressed.*

## BETHLEHEM FIRE DEPARTMENT

The Bethlehem Fire Department responds to a wide variety of emergencies throughout the City of Bethlehem. Ensuring the safety of our residents and visitors is our top priority.



### EXTENDED SERVICE

Bethlehem EMS is excited to announce expanded service out of the Memorial Fire Station at 521 W. Broad Street. Last year, we moved a 24-hour crew to the Schweder Fire Station for quicker response times to Southside emergencies. In February 2024, we will have a crew of trained paramedics stationed on Broad Street for quicker response times to Center City and West Side calls for service. As always, we encourage you to stop by any of the emergency services stations to get to know your emergency responders.



*Memorial Fire Station.*

### LITHIUM-ION BATTERY SAFETY

Lithium-ion batteries supply power to many kinds of devices, including smart phones, laptops, e-scooters and e-bikes, e-cigarettes, smoke alarms, toys and even cars. If not used correctly, or if damaged, these batteries can catch on fire or explode. Problems with lithium-ion batteries include the large amount of energy they store in a small space. Sometimes batteries are not used the right way, which can be dangerous. Like any product, a small number of these batteries are defective, leading to overheating, catching fire, or exploding.



To safely use a lithium-ion battery, purchase and use devices listed by a qualified testing laboratory. Always follow the manufacturer's instructions and only use the battery that is designed for the device. Put batteries in the device the right way and use the charging cord that came with the device. Do not charge a device under your pillow, on your bed, or on a couch; do not keep charging the device or device battery after it is fully charged; and do not

charge below 32°F or above 105°F. Keep batteries at room temperature when possible, and store them away from anything that can catch fire.

### SMOKE DETECTOR INSTALLATION

The City of Bethlehem Fire Department continues its smoke detector installation program. If you are a City of Bethlehem resident in need of smoke detectors, the Bethlehem Fire Department, in partnership with the American Red Cross, will install battery-operated smoke detectors in your home at no cost. **For additional information, please call 610-865-7140 to schedule a time for installation.**



### WELCOME NEW RECRUITS!

The Bethlehem Fire Department would like to extend a warm welcome to eight of our newest members. Our new firefighters will be attending the Allentown Fire Academy for 20 weeks, learning topics ranging from vehicle extrication, residential structure fires and water rescue. After graduation, our new firefighters will return to Bethlehem to receive orientation under the guidance of Training Captain Matt Griffin before being assigned to one of our four fire suppression platoons.



# BETHLEHEM POLICE DEPARTMENT



The Police Department's goal is simple: to make Bethlehem a safe place for citizens to raise and nurture a family and for our business community to prosper.

## COPS 'N' KIDS EVENT

Bethlehem Police and Cops 'n' Kids Lehigh Valley had a beautiful day joining in with Christmas tree decorating at City Hall with Mayor Reynolds! The 3rd grade class from Marvine Elementary School had an awesome lunch and many of them are now official Bethlehem Jr. Police Officers. This event was very enjoyable thanks to the special music by the Liberty High School Band!



## RICO RETIREMENT

Rico, a Dutch Shepherd, has faithfully served the citizens of Bethlehem for the past seven years as a patrol and narcotics detection K9. City Council unanimously voted to approve a resolution to officially retire Rico and allow him to spend retirement with his handler, Officer Steidel. Thank you for your service, Rico!



## SCHOOL RESOURCE OFFICERS HOLD MIDDLE SCHOOL DANCE

On February 9, the School Resource Officer (SRO) Unit held the 7th Annual All Middle School Dance at Liberty High School; 761 students from the four Bethlehem Area School District (BASD)

middle schools were in attendance. Proceeds from the dance support "The Blue Line" scholarship, which is offered to two Liberty High School and two Freedom High School graduating seniors who are attending secondary education with an intent to pursue a career in criminal justice. Seniors interested in applying for the scholarship can contact their guidance counselors for more information.

The School Resource Officers (SROs) would also like to announce that applications for the 2024 Junior Police Academy are now available. The two-week Junior Police Academy will be held June 10 - 14 and June 17 - 21. This program is highly selective with 10 cadets being chosen from each of the four BASD middle schools. Interested students should contact their school's SRO for more information.

## NEW OFFICERS SWORN IN

On July 13, 2023, the Bethlehem Police Department held a swearing-in ceremony. During the ceremony, Mayor Reynolds administered the oath of office to seven of our new officers. Congratulations and welcome to Officer Gonzalez, #507; Officer Friedman, #510; Officer Gauntner, #511; Officer Correll, #512; Officer Ray, #513; Officer Swider, #514; and Officer Sousa, #520.

On January 10, 2024, Mayor Reynolds administered the oath of office to the Bethlehem Police Department's newest officers, Officer Brackett, Officer Chiappetta, Officer Rudd and Officer Schwartz!



245 East Broad Street  
Bethlehem, PA 18018

610-868-8531

ConnellFuneral.com

*Thank you for allowing us to serve  
in the city we love since 1919!*

Co-Presidents: Matthew P. Connell and James M. Connell, Jr.  
Supervisor: John E. Connell







## TRUST (noun)

1. firm belief in the reliability, truth, ability, or strength of someone or something.

Trust is earned over time by consistently doing what's right. At St. Luke's, trust is our foundation. St. Luke's was first in bringing innovative health care to the region 150 years ago, and we continue to be at the forefront of patient care and innovation. St. Luke's – the care you know and the name you trust.

*Transforming Medicine.  
Reimagining Care.*



# E.F. Butz Agency

*“For All of Your Insurance Needs”*

HOME | LIFE | AUTO | COMMERCIAL

3333 W Emmaus Avenue | Emmaus | 610-965-2824

efbutzins.com | efbutzins@rcn.com

## Horizons Summer Camp

GRADES K-9 • JUNE 10 – AUGUST 15 • CELEBRATING 30 YEARS!

➤ [NORTHAMPTON.EDU/SUMMERYOUTH](http://NORTHAMPTON.EDU/SUMMERYOUTH)

✉ [YOUTHINFO@NORTHAMPTON.EDU](mailto:YOUTHINFO@NORTHAMPTON.EDU)

☎ 610-861-4120



**Register now!**



Come join the celebration of 30 years of Horizons For Youth impacting families throughout the Lehigh Valley! Former student participants return to be counselors, then teachers, then parents, sending their own children. Northampton Community College invites you to be part of the legacy this summer. Contact 610-861-4120 for more information and how to register.

**NORTHAMPTON**  
COMMUNITY COLLEGE



# Be Astounded

**FASTER** Internet  
**BETTER** Mobile



**1.800.4.ASTOUND**  
**astound.com**

©2024 Astound Broadband. All rights reserved.



## **FASTSIGNS** ALLENTOWN

Your one stop shop for all things  
signs and graphics related.

**610-434-7353 219@fastsigns.com**  
Covering Eastern PA and NJ

S E T T O N  
R E A L T Y

**SERVING THE LEHIGH VALLEY AND BEYOND FOR OVER 40 YEARS**  
RESIDENTIAL | COMMERCIAL | LAND DEVELOPMENT | AUCTION SERVICES

WE ARE READY AND EAGER TO SERVE ALL YOUR REAL ESTATE NEEDS.

**610-821-1212 | SettonRealty.com**



CITY OF BETHLEHEM

# Community Gardens

Want to grow your own veggies and herbs but don't have the space for it? You can rent a plot from one of our three locations within the city.

**THREE LOCATIONS:**

- Rockland: 924 Rockland St., Bethlehem, PA 18017
- Clearview: 2270 Pinehurst Rd., Bethlehem, PA 18017
- Yellis Tract: 571 Pine Top Dr., Bethlehem, PA 18017



Scan the QR code to learn more and reserve your plot today!



Northside Alive is a community-driven neighborhood revitalization process launched in 2018 by the City of Bethlehem and Community Action Development Bethlehem.



## Save the Date!

■ **NORTHSIDE ALIVE BLOCK PARTY**

Bethlehem YMCA • 430 E. Broad Street  
**Date:** May 11, 2024 (Rain date May 18)  
**Time:** 4 – 8 pm

■ **SUMMER KICKOFF: MOVIE IN THE PARK**

June 12, 2024 • Elmwood Park

More information about upcoming events is available at [northsidealive.org/events](http://northsidealive.org/events).

Northside Alive is always seeking community volunteers to join our committees. Visit [northsidealive.org/volunteer](http://northsidealive.org/volunteer) to sign up and help us spread the word.

Visit [northsidealive.org](http://northsidealive.org) or scan the QR code to learn more about Northside Alive. You can also follow us on social media:



📷 @northside\_alive | 📺 @Northside Alive

*This information serves to notify the community about events and investments in the City's Northside 2027 HUD-designated Neighborhood Revitalization Strategy Area (NRSA). NRSA's are intended to revitalize a targeted neighborhood by encouraging a coordinated approach through comprehensive place-based community development efforts. Translation and disability accessibility services are available upon request if you would like to learn about Northside activities and how to participate, including access for individuals with hearing and visual impairments. If you would like accommodations to access Northside Alive information, please call the Community Development Bureau at 610-865-7085. Servicios de traducción y accesibilidad para discapacitados disponibles previa solicitud si desea obtener información sobre las actividades de Northside y cómo participar, incluido el acceso para personas con discapacidades auditivas y visuales. Si desea adaptaciones para acceder a la información de Northside Alive, llame a la Oficina de Desarrollo Comunitario al 610-865-7085.*

We thought 2023 would be impossible for Northside Alive to top, but 2024 is already shaping up to be even better!

In 2023, we focused on cultivating strong partnerships, gathering feedback, providing resources and creating opportunities for community engagement. Northside Alive participated in and organized over 30 events with more than 900 total attendees. Many of the events were educational. We kept residents informed through pop-ups and provided opportunities for neighbors to connect. But we couldn't have done it without **YOU**, our community! So many community members volunteered to help their neighbors. Northside Alive worked with volunteers to perform a walking audit of the area and to hold trash pickup events. We created our Brighter Blocks initiative with the help of PPL and installed donated LED bulbs outside of over 50 Northside Alive homes. We drew our biggest turnouts for trivia night, community yoga, a summer movie night at the park with Bethlehem Recreation and the ever-popular Northside Alive Block Party! Looking ahead, we'll be installing two free little libraries in our neighborhood parks, pedestrian-friendly improvements to Broad Street and the start of construction at Friendship Park!

*Here's to another exciting year!* Our volunteers are already hard at work planning projects, events and workshops for our community, and we hope to see you there!

**Visit [northsidealive.org](http://northsidealive.org) for more information on upcoming projects and how YOU can get involved!**

**NEW PARK LOADING...**

Community feedback played a crucial role in shaping the final redesign plan for Friendship Park. Pending funding availability, we hope to begin construction in the late summer of 2024.

Here's how the upcoming renovations will enhance the park:

- More green space and native trees to provide additional shade and break up the asphalt.
- A free splash pad will offer neighborhood children a fun way to cool off just blocks from home.
- A designated entrance for Electrical Bureau trucks will prevent them from entering the play area, ensuring everyone's safety.

Visit [northsidealive.org/friendshipparkproject](http://northsidealive.org/friendshipparkproject) to learn more about this exciting project.







SERVING THE CITY OF BETHLEHEM SINCE 1977



COMMERCIAL • RESIDENTIAL • INDUSTRIAL

Container service 1-25 cubic yards

Committed to the community, we ensure excellence, reliability, and a healthier environment for all.

PO Box 106, Bethlehem, PA 18016  
610-868-6221 • symons-sanitation.com

Celebrating



Powered by integrity.



Scan code for limited time \$75 savings

610.866.1076

PA010621 • NJ18491

*Our state-of-the-art crematory is located within our Historic Bethlehem main building, where your loved one never leaves our care.*



Where your loved one never leaves our care.

458 Center at Market Streets  
Bethlehem, PA 18018

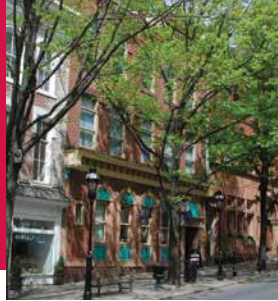
1145 Lehigh Street  
Allentown, PA 18103  
610-866-0671

Demetrios J. Herron  
Connor J Herron  
Paula C. Herron  
Andrew F. Herron

Bethlehem, PA | Allentown, PA | herronfuneralhomes.com

# RESOURCES AND ASSISTANCE

FOR CITY OF BETHLEHEM RESIDENTS



**FOR ASSISTANCE, DIAL 2-1-1**

**IN CASE OF EMERGENCY, DIAL 9-1-1**

## ARE YOU IN NEED OF EMERGENCY SHELTER?

- Bethlehem Emergency ..... 484-379-6694
- New Bethany Ministries ..... 610-691-5602
- Victory House of Lehigh Valley..... 610-691-3373

## NEED HELP WITH RENTAL PAYMENTS OR HOUSING ASSISTANCE?

- American Red Cross (*Disaster Assistance*) ..... 610-865-4400
- Bethlehem Emergency Services (*General*) ..... 610-865-7118
- Salvation Army (*Rental/Housing Assistance*)..... 610-867-4681
- Turning Point (*Rental/Housing Assistance*)  
Domestic Abuse Hotline..... 610-437-3369
- Victory House of Lehigh Valley  
Housing Assistance ..... 610-691-3373
- New Bethany Ministries  
Rental/Housing Assistance ..... 610-691-5602 (option 2)
- Lehigh Valley Coalition on Affordable Housing  
(*Rental/Housing Assistance*)..... 610-691-5620
- Bethlehem Housing Authority  
(*Rental/Housing Assistance*)..... 610-865-8300
- Northampton County Housing Authority  
(*Rental/Housing Assistance*)..... 610-759-8488

## NEED LEGAL ASSISTANCE WITH HOUSING?

- North Penn Legal Services..... 610-317-8757

## DO YOU NEED PUBLIC TRANSPORTATION?

- LANTA/Metro ..... 610-776-7433
- LANtaVan ..... 610-432-3200

## NEED HELP PAYING BILLS?

### First Energy

- Repair/Customer Service ..... 1-800-545-7741
- First Energy WARM Program..... 1-800-545-7741

### PPL

- Repair/Customer Service ..... 1-800-342-5775
- PPL WRAP Program ..... 1-800-342-5775

### UGI

- Emergencies ..... 1-800-276-2722
- General Office ..... 1-800-276-2722
- UGI WARM Program..... 1-800-844-9276

### Electric

- Community Action Committee of the Lehigh Valley  
(PPL Bill)..... 610-691-5620

### Gas

- Lehigh County Energy Assistance  
(LIHEAP Program)..... 610-821-6702
- Northampton County Energy Assistance  
(LIHEAP Program)..... 610-250-1785
- Salvation Army (UGI Operation Share Program).... 610-432-0129  
..... 610-867-4681

**City Water** ..... 610-865-7070

**City Sewer**..... 610-865-7065

**Water/Sewer Off Hours**..... 610-865-7074

For more information on housing, please visit [bethlehem-pa.gov/Community-Economic-Development/Community-Development/Housing](http://bethlehem-pa.gov/Community-Economic-Development/Community-Development/Housing) or scan the QR code.



# 2024 BETHLEHEM STAR

*Exclusive!*  
Beautiful  
Serenity Star

From  
**JOY TO THE WORLD®**  
(Made in Poland)

## HAND CUT CRYSTAL

AND BETHLEHEM CHRISTMAS SHOPPE

**PREORDER YOURS TODAY!**  
452 Main Street • Historic Bethlehem  
610-868-2427 • [BethlehemChristmasShoppe.com](http://BethlehemChristmasShoppe.com)

## DAVE & WAYNE EST. 1958 AUTO CENTER

**WORKING ON CARS AS A FAMILY SINCE 1958**

Our team of highly skilled technicians offer top-notch customer service at an affordable rate. From routine maintenance to state inspections to major repairs, we can handle anything you drive into our shop.

**Call or stop by the shop today!**

**318 W Union Blvd • Bethlehem, PA 18018**  
**610-867-8841 • [davenwayneautocenter.com](http://davenwayneautocenter.com)**



## WORK ZONE TRAFFIC SAFETY

Transportation incidents and workers struck by vehicles or mobile equipment account for the highest number of fatal work injuries, according to the Bureau of Labor Statistics. City of Bethlehem workers, such as our Streets Department and utility construction crews, are regularly exposed to the dangers of moving vehicle accidents. In 2023, the City of Bethlehem Water Department responded to 112 emergency repairs that required traffic control enforcement.

One of the most important things to have while driving through a construction zone is patience. Getting worked up doesn't speed anything up, so just take a deep breath, pay attention and stay safe.

Driving can be a challenging task at times. Add construction zones into the mix, which seem to pop up around every corner, and driving becomes even more challenging. Construction zones change traffic patterns, narrow driving lanes and create a combination of factors that can increase the likelihood of crashes. Nationally in 2021, there were an estimated 106,000 total work zone crashes, 956 of which were fatal. Although driving through construction zones can be stressful and frustrating, every driver has a responsibility to prioritize safety and the safe operation of their vehicle.

Here are a few safety tips that drivers can put into practice when driving through construction zones:

- Slow down and pay attention to signs; obey the speed limit.
- Comply with directions given by flaggers.
- Don't follow vehicles in front of you too closely.
- Expect delays and, if possible, plan ahead.
- Watch out for workers and other potential hazards.
- Focus on the road and pay attention to surroundings.
- Beware of debris.
- Limit distractions, especially cell phone usage.
- Turn on emergency flashers.

## BEWARE OF F.O.G.: FATS, OILS AND GREASE

Did you know that nearly 50% of sewage overflows nationwide are caused by homeowners who improperly dispose of everyday fats, oils and grease?

**What is F.O.G.?** F.O.G. refers to fats, oils and grease, which are commonly found in such things as meat fats, lard, cooking oil, shortening, butter and margarine, food scraps, baked goods, sauces and soups and dairy products. When F.O.G. is poured down the drain, it solidifies and sticks to the insides of sewer pipes (both in your private sewer lateral and in the City collection system), causing obstructions and eventual blockages. Once these blockages are formed, they have the potential to cause sewer backups and overflows where raw sewage can enter storm drains, streams, yards and inside your home. Such spills pose a risk to public health, can adversely affect the environment and are costly to remedy.

**How can you participate in reducing F.O.G.?** Pour cooking fat or grease into a small container, metal can or jar. Once it cools or solidifies, place it in the garbage and not down the drain. Don't dispose of F.O.G. in food waste disposals, sinks, toilets or floor drains. Dispose of greasy solid waste in the trash. Dry wipe pots, pans and dishes before washing to minimize the amount of F.O.G. and solids rinsed down the drain. Do not put used cooking oil, oil-based paints, motor oil, solvents or other chemicals down sewer lines or in storm drains.

**Spread the word.** You can help educate others about F.O.G. by sharing this information with friends and neighbors. The City of

## IDENTIFYING SERVICE LINE MATERIAL

The City of Bethlehem needs your help in identifying the pipe material of your home's water service line.

Follow the steps below to identify the service line material in your home. You will need a small refrigerator-type magnet.

1. Locate the water meter in your basement or lowest level of your home. Look at the pipe that comes through the outside wall and connects to the water meter. Note the color of the pipe and compare against the examples in the pictures below to determine your service line material. If your service line is silver-gray, use the magnet to differentiate between lead and galvanized steel pipe. The magnet will stick to galvanized steel but not to lead.



**Lead:** Non-magnetic, silver-gray color that easily scratches with a coin.



**Copper:** Non-magnetic, color of a copper penny.



**Galvanized Steel:** Magnetic, dull gray color.



**Plastic:** Non-magnetic, white or black rigid pipe.



**Brass:** Non-magnetic, color varies from silvery yellow to reddish brown.

2. Report your findings to the City using the Service Line Identification Form found at [bethlehem-pa.gov/Water-Sewer-Resources/Public-Information/Lead-Service-Lines](http://bethlehem-pa.gov/Water-Sewer-Resources/Public-Information/Lead-Service-Lines). You can also email the City of Bethlehem Water Quality Bureau at [LeadServiceLine@bethlehem-pa.gov](mailto:LeadServiceLine@bethlehem-pa.gov).

There are other ways to check for lead piping. Look for an EPA-recognized lead test kit at your local hardware or home improvement store or hire a licensed plumber to perform a pipe survey of your home.

Please contact the City's Water Quality Bureau at 610-865-7144 or [LeadServiceLine@bethlehem-pa.gov](mailto:LeadServiceLine@bethlehem-pa.gov) with any questions about service line identification.

Bethlehem is working hard to improve our infrastructure and water quality by informing residents and businesses of ways to reduce water pollution, eliminate sewer backups and improve the quality of life for those who live and work here.

**Help prevent problems.** Here are tips for getting rid of leftover fats, oils and grease:

- Minimize the use of excess cooking oils and grease when cooking or frying.
- Never pour fat, oil and grease down your sink drain, toilet or garbage disposal.
- Place leftover fats, oils and grease into containers with lids and place into a trash receptacle for pick up on trash day.
- Mix fat, oil or grease with absorbent materials, such as coffee grounds or cat litter, and put it in a lidded container and dispose of it with the trash.
- If cleaning a greasy pan, pour grease into a container and wipe excess grease from the pan with paper towels. Place the towels into the trash.
- If using a deep fat fryer, mix oils with absorbent material, such as coffee grounds or cat litter, and soak up the excess with paper towels and put them into the trash.

**For more information on managing fats, oils and grease, or for emergency sewer backup response, contact the City's 24/7 Service Center at 610-865-7000.**

# City of Bethlehem | TAXES

## IMPORTANT DATES

- 2024 City of Bethlehem Real Estate Property Tax Bills are due in full, postmarked by **May 31, 2024**. After **May 31, 2024**, a 10% penalty will be assessed on all bills.
- All property taxes unpaid as of **December 31, 2024**, will be turned over to a collection agency.
- 2023 Earned Income Tax Returns are due on or before **April 15, 2024**.
- 2023 Business Privilege & Mercantile Tax Returns are due on or before **May 6, 2024**.

## 2023 REAL ESTATE TAX BILLS

### Property Tax Millage Rates

The current (2024) millage rates for the City portion of the real estate tax bill are:

- Parcels located within Lehigh County – 6.21
- Parcels located within Northampton County – 19.64

## CITY OF BETHLEHEM 2024 REAL ESTATE PROPERTY TAX DUE DATES:

- **Discount (2%) March 28, 2024**
- **Base May 31, 2024**
- **Penalty (10%) December 31, 2024**

**Installment Plan:** Installment payments may not commence after the first installment due date. A grace period of five days beginning with the due date is allowed for each installment. If not paid within five days beginning with the due date, a penalty of 10% will be added to each delinquent installment. No discounts are allowed on installment payments unless the full tax is paid during the discount period. **Note:** If you are paying by installments, you will be billed for subsequent payments.

All property taxes unpaid as of **December 31, 2024**, will be turned over to a collection agency.

## QUESTIONS OR ASSISTANCE

For additional questions or assistance with obtaining a copy of a current property tax bill, please contact:

- **City of Bethlehem Tax Bureau Phone:** 610-865-7022, Option 5
- **Email:** TaxDepartment@Bethlehem-pa.gov

For additional questions or assistance with paying a current property tax bill, please contact:

- **City of Bethlehem Bureau of Financial Services Phone:** 610-865-7125

## EARNED INCOME TAX AND LOCAL SERVICES TAX

### Earned Income Tax (EIT) Filing

The Earned Income Tax (EIT) rate for the City of Bethlehem is a 1% income tax that is assessed on the gross earnings of residents and non-residents and net profits of residents. Just like federal and state income taxes, EIT tax returns must be filed online at [efile.keystonecollects.com/#/login](http://efile.keystonecollects.com/#/login) or by mail on or before **April 15, 2024**.

### Local Services Tax (LST) Filing

The Local Services Tax (LST) rate for the City of Bethlehem is \$52 per person who is employed or self-employed within the City of Bethlehem. Most employers withhold this tax and list it as the "LST TAX" on an employee's pay stub or W-2 form. Self-employed persons are responsible to file/pay the tax themselves quarterly.

**The City of Bethlehem uses a third-party servicer for collection of Earned Income Taxes and LST Filings. Earned Income Tax Filing and LST Filings are collected and processed by:**

- **KEYSTONE COLLECTIONS GROUP**

[keystonecollects.com/forms/](http://keystonecollects.com/forms/)

**Phone:** 866-539-1100

**Hours:** Monday – Friday, 8:30 am – 12 pm and 12:30 – 4 pm

**To have forms automatically mailed to you, please contact Keystone Collections Group.**

## BUSINESS PRIVILEGE AND MERCANTILE TAX/LICENSING

### Business Privilege and Mercantile Tax/License Filing

A Business Privilege License (BPL) is required by all persons and/or businesses that engage in a business, profession or other commercial activity within the City of Bethlehem. The BPL annual license fee is \$25. The license period runs from May 1 through April 30 of the following year.

The 2023 Business Privilege & Mercantile Tax Return is due on or before **May 6, 2024**.

**The City of Bethlehem uses a third-party servicer for collection of the BPL Licensing and collection of Business Privilege and Mercantile Tax. All BPL registrations, Business Privilege and Mercantile Tax payments and returns for the City of Bethlehem are processed by:**

- **TRI-STATE FINANCIAL GROUP**

[tfgtax.com](http://tfgtax.com)

**Phone:** 610-270-9520

**Hours:** Monday – Friday, 9 am – 4 pm

**To have forms automatically mailed to you, please contact Tri-State Financial Group.**

## LOSE WEIGHT. FEEL GREAT.

Holistic, all natural, weight-loss program designed to return your body to its natural weight.



**Dr Augello's  
Health & Body**

**888-Burn-Fat  
888BurnFat.net**



**BEFORE**

**AFTER**



# The Benefits to a Growing Urban Forest

As most of the Bethlehem citizens know, the City of Bethlehem has been recognized as a Tree City for over 30 years now. Each year, we grow as a community and try to reach new goals set the year prior. This is also recognized through the Growth Award, which has been given to the City of Bethlehem for over 15 years. Trees are vital and essential to our communities for various reasons. In order to keep striving for new goals, we as a community must recognize the reasons and importance of replacing trees that have been removed.

If we just start with the physical properties of trees, we can see the benefit in the beauty they add to our urban scenery. Without them, colors would be dull and infrastructures would take the spotlight. Trees soften our surroundings and environment and can even influence our moods. One of the most important things that trees do is remove pollutants out of the air, such as dust, smoke and pollen, giving us cleaner air. They also help reduce heat from pavement and concrete to cool our air temperatures. In an urban setting like ours, trees help reduce noise and act as a buffer by absorbing noises of the city. Another benefit of urban canopy is that trees reduce soil erosion and runoff. This helps with the conservation of our water. Lastly, if all of these benefits listed were not enough, trees can increase property values and provide a habitat for our local wildlife. Preserving and growing our urban canopy is vital for all of these reasons and beneficial to our community.



You can learn about Urban Forestry at [bethlehem-pa.gov/Public-Works/Bureaus/Urban-Forestry](http://bethlehem-pa.gov/Public-Works/Bureaus/Urban-Forestry).

Your source for  
**SUMMER FUN**

**B&B**  
CUSTOM POOLS

PA000981 / NJ13VH04418900

610.965.POOL • [BBCUSTOMPOOLS.COM](http://BBCUSTOMPOOLS.COM)

DESIGN, INSTALLATION & RENOVATION • PATIOS • OUTDOOR KITCHENS, FIREPLACES & MORE

Who's Who  
Lehigh Valley

**A JOB  
RAIL DONE**

WE'RE DEDICATED TO THE BEST PRODUCTS & SERVICES

**American Fence & Flag**  
Since 1983

INSTALLED OR MATERIALS ONLY  
LARGE IN-STOCK INVENTORY

PORCH, DECK & STAIR RAILING • FENCES • FLAGS & FLAGPOLES

610.437.1944 | 2738 EBERHART RD. | WHITEHALL | [AMERICAN-FENCE.COM](http://AMERICAN-FENCE.COM)



# Recreation Programs and Events • Summer 2024

Stay up to date on all City programs and events and learn more about rental facilities by visiting [bethlehem-pa.gov/Recreation](http://bethlehem-pa.gov/Recreation), or by scanning the QR code.



## Summer Park Program

Join us for some summer fun at our neighborhood parks! Our summer park program, led by our energetic staff, will again rotate through select parks throughout the City of Bethlehem. Park activities will include, but are not limited to, arts and crafts, games and special visits by community organizations. This year's schedule is as follows:

- Yosko Park (617 Atlantic St., 18015)  
Mondays, June 17 – July 22, 5:30 – 7:30 pm
- Fairview Park (4th Ave. & Market St., 18018)  
Tuesdays, June 18 – July 23, 10 am – 12 pm
- Elmwood Park (820 Dellwood St., 18018),  
Wednesdays, June 12 – July 17, 5:30 – 7:30 pm
- L.G. Stewart Park (2931 Westminster Rd., 18017),  
Thursdays, June 20 – July 27, 10 am– 12 pm

We encourage you to visit each location of our park program so you can experience the diversity in our varied geographic areas throughout the City.



## SWIMMING POOLS AND SPLASH PARK

The City of Bethlehem has several ways to stay cool in the summer. There are five pools and one splash park in the City. They are Memorial (our regional pool) and Clearview, Stark, Westside and Yosko (our neighborhood pools). Our splash park, which is free of charge, is located at Yosko Park and is open daily from dawn to dusk from Memorial Day weekend to Labor Day. The pool season will begin on June 8 this year and will end on August 25. Season passes are available to be purchased online or in the Recreation Office at City Hall.



## BERNIE FRITZ NIGHT

Join us for a night of food, games, dancing, face painting, arts and crafts and more. Our annual Bernie Fritz Night celebration honoring the late playground leader, teacher and coach who devoted his life to Bethlehem youth will be held Wednesday, July 24 from 6 – 8 pm at Bernie Fritz Park on Memorial Avenue in the Northeast section of the City.



Please visit [bethlehem-pa.gov/Recreation/Recreation-Activities](http://bethlehem-pa.gov/Recreation/Recreation-Activities) or scan the QR code for more information on the above and all of our programming.



## Tennis and Pickleball

Tennis or pickleball anyone? Find a partner and play some tennis and/or pickleball at one of our courts. Tennis is available at Clearview, Monocacy, Sand Island and Westside Parks. Pickleball is available at Clearview, Monocacy and Westside.







# PHYSICAL THERAPY AT StLuke's

99.5% of patients would recommend our therapists to a friend

## Therapists You *TRUST*

To schedule your appointment today, call 484-526-5025  
stlukespt.com

### Are you interested in supporting your community?

Please email [marketing@ksand.com](mailto:marketing@ksand.com) for more information on how your ad can be featured in Bethlehem's magazine. This publication reaches over 32,000 addresses and is a great way to promote your business.



Photograph by Craig Roberts

# EXPANSIVELY *welcoming*



FIRST PRESBYTERIAN CHURCH OF BETHLEHEM

2344 Center Street | Bethlehem | 610-867-5865 | [fpc-bethlehem.org](http://fpc-bethlehem.org) | Facebook:[@firstpresbethlehem](https://www.facebook.com/firstpresbethlehem)

# TRAILS AND LINEAR PARKS

Whether you like to walk, bike or run, we have a place for you. Visit one of our trails or linear parks.



## ■ Monocacy Way Trail:

Travel along the beautiful Monocacy Creek from the Industrial Quarter to the Monocacy Recreational Complex at Memorial Pool.

■ **Sand Island Trail (D&L Corridor):** Travel the Delaware and Lehigh Corridor to Allentown or Easton and beyond and experience the history of the Lehigh Canal.

■ **South Bethlehem Greenway Linear Park:** Take a walk on the Southside of Bethlehem and stop by Saucon Park, the Skateplaza and play areas on the trail. In addition, enjoy the Southside Arts District displays and businesses along the way.

■ **South Mountain Park:** Enjoy the trails in this beautiful park on Mountain Drive in the backyard of Lehigh University. In addition, bring a disc to play some golf while visiting the park.



# MOVIES in the PARK

Bring your blankets and chairs, and come out and enjoy a movie and some popcorn with your family and friends under the stars. Movies will begin at dusk. This year's site schedule is as follows:

- **Wednesday, June 12** @ Elmwood Park: *"Super Mario Bros. Movie"*
- **Tuesday, June 25** @ Fairview Park: *"Coco"*
- **Thursday, July 18** @ Yosko Park: *"Encanto"*
- **Tuesday, July 30** @ L.G. Stewart Park: *"Moana"*

# CD Rates in Full Bloom

**5.25%** APY

6 MONTH CD<sup>1</sup>

**5.00%** APY

11 MONTH CD<sup>2</sup>

**4.75%** APY

15 MONTH CD<sup>3</sup>



[unitybank.com/cdspecials](https://unitybank.com/cdspecials)



<sup>1</sup> APY=Annual Percentage Yield. Penalty for early withdrawal applies. Principal may be reduced by penalty amount. Minimum deposit of \$5000 for 6-month certificate of deposit (CD) promotional product. Available for consumer and IRA/Retirement CD's (IRA/Retirement CD's must be opened in branch). Offer valid beginning December 7, 2023. Offer can be withdrawn at any time. Rates, terms, and conditions are subject to change without notice. Please ask a representative for more details.

<sup>2</sup> APY= Annual Percentage Yield. Penalty for early withdrawal applies. Principal may be reduced by penalty amount. Minimum deposit of \$1000 for 11-month certificate of deposit (CD) promotional product. Available for consumer, business, and IRA/Retirement CD's (business and IRA/Retirement CD's must be opened in branch). Offer valid beginning June 28, 2023. Offer can be withdrawn at any time. Rates, terms, and conditions are subject to change without notice. Please ask a representative for more details.

<sup>3</sup> APY= Annual Percentage Yield. Penalty for early withdrawal applies. Principal may be reduced by penalty amount. Minimum deposit of \$5000 for 15-month certificate of deposit (CD) promotional product. Available for consumer, business, and IRA/Retirement CD's (business and IRA/Retirement CD's must be opened in branch). Offer valid beginning April 1, 2024. Offer can be withdrawn at any time. Rates, terms, and conditions are subject to change without notice. Please ask a representative for more details.

6 Month Promo Code: 1123 | 11 Month Promo Code: 1120 | 15 Month Promo Code: 1124  
 EQUAL HOUSING LENDER | MEMBER FDIC





## BETHLEHEM AREA PUBLIC LIBRARY

The Bethlehem Area Public Library educates, informs and inspires by providing free and open access to materials and information.

### Check out our Library Programs!

Don't miss the events offered at your library for children, teens and families, including storytimes, computer workshops, yoga, Qigong, film and book clubs, open mics, Dungeons & Dragons One Shot Sessions and more!

### Upcoming Events:

- Memoirs Only Book Club at Coolidge Branch: May 29 at 6 pm
- Spike's Birthday Party! April 27 at 1 pm
- Afterschool Homework Help at Main & South Side branches: Monday - Thursday
- Sip & Stitch at Books on the Hill: Monthly

### Books on the Go

The BAPL Bookmobile is a mobile library that brings books and other reading materials directly to the community. The bookmobile visits various parts of Hanover Township on a regular basis, as well as making special visits to community events, making it easy for residents to borrow books and other materials without traveling to a traditional library location. The Bookmobile is equipped with a wide selection of new materials for all ages and interests. Hanover residents can also get a library card on the bookmobile, as well as pick up holds, making it easy for residents to borrow books and other materials.



### Don't miss out on our cloud library!

The Bethlehem District Libraries have brought on a new platform for eBook and eAudiobook lending. The new platform, cloudLibrary™, will provide an app that is extremely easy for all users, and allows for the library to better manage its content and offer far more to you through a partnership with other libraries across PA. Visit [yourcloudlibrary.com](http://yourcloudlibrary.com).

### Bethlehem Area Public Library Locations

- **Main Library**  
11 W. Church Street  
Bethlehem, PA 18018  
610-867-3761
- **South Side Branch**  
400 Webster Street  
Bethlehem, PA 18015  
610-867-7852
- **BAPL Coolidge**  
2740 Fifth Street  
Bethlehem, PA 18020  
484-892-6267
- **Books on the Hill**  
Spiegel and Stanley Streets  
Fountain Hill, PA 18015
- **Social Media:**
  - @pabapl
  - Newsletter Signup: [bapl.org/newsletter](http://bapl.org/newsletter)
  - Bookmobile Schedule: [bapl.org/the-bookmobile](http://bapl.org/the-bookmobile)

# A beautiful memorial to cherish your best friend...

# Forever in Crystal<sup>®</sup>

At Forever in Crystal, we understand how hard it is to say goodbye to your beloved pet.

Our patented process gives you the ability to memorialize your loved one, which can include your pet's ashes along with your digital picture and an engraved message.

---

*I cried and could not speak when I saw the finished piece. Now Mia is on my nightstand to say good night and she is the first to wish me a happy day each morning. Thank you from the bottom of my heart." ~ Alexandra K.*

---

[ForeverInCrystalPets.com](http://ForeverInCrystalPets.com)



# CITY OF BETHLEHEM'S STREET SWEEPING SCHEDULE

April 1 - October 31

Tuesday - Friday • 7:30 am - 2 pm

The Department Of Public Works would like to announce that the Bureau of Streets will begin its street sweeping program on April 1 and it will run through October 31. During this time frame, street sweeping activities will operate every Tuesday through Friday between 7:30 am and 2 pm, on the posted roads throughout the City limits. The regularly scheduled street sweeping routes that are main thoroughfares in the City are posted with "No Parking" signs alerting motorists of parking restrictions for a given day and time. Vehicles must be kept off these posted streets to allow for effective street cleaning.

The City is broken into 88 sweeping districts that are not posted. The City tries to deploy three sweepers each day to run through these areas. Roads that are under 12 feet wide do not get swept.

For a full route schedule, visit [bethlehem-pa.gov/public-works](http://bethlehem-pa.gov/public-works) and click the "Street Sweeping Schedule" button, or scan the QR code.



# YARD WASTE DROP OFF

## Bethlehem Yard Waste Facility

- 1480 Schoenersville Road
- Tuesday - Saturday, 9 am - 3 pm
- Facility is **CLOSED** Sunday and Monday, and also during the months of December, February and March.

**Materials accepted:** Leaves (loose or in brown paper bags), small brush up to 4" diameter (no longer than 6'), hedge trimmings, garden plant residue, Christmas trees (free of ornaments, lights and tinsel).

**Materials NOT accepted:** Sod, grass clippings, tree stumps, hay/straw, plastic bags, soil/mulch, root balls, bamboo, ornamental grass.

**No dumping:** Dumping is illegal, and violators will be fined according to City Ordinances and PA DEP Guidelines.

**Please note:** All loads must be tarped when entering or exiting the facility.

**Loading service:** \$10 per cubic yard. Loading services end daily at 2:45 pm. Pickup trucks can no longer be self-loaded. There is a limit of three 30-gallon containers that may be self-loaded.

**Please note:** Materials may only be dropped off when the Center is open and operating. Only **QUALIFIED RESIDENTS** and property owners within the City of Bethlehem may drop off materials at the Yard Waste Facility. You must show a valid driver's license and compost card on every drop-off trip.

## MAKING ALL AREAS OF YOUR HOME ACCESSIBLE



### Serving the Lehigh Valley for Over 40 Years

Sun Stairlifts Scooters & More carries a wide variety of quality stair lifts, seat lifts, scooters, ramps, and accessories. **Try before you buy!**

### Come See Our Retail Store!

245 W. Goepf St., Bethlehem, PA 18018 • 610-867-1099 • [sunstairlifts.com](http://sunstairlifts.com)



# 2024 SPRING YARD WASTE CURBSIDE PICKUP SCHEDULE

| CURBSIDE RECYCLING PICK UP DAY | YARD WASTE PICK UP DAY |
|--------------------------------|------------------------|
| June 3, 2024 (B week)          | June 3, 2024 (B week)  |
| June 4, 2024 (B week)          | June 4, 2024 (B week)  |
| June 5, 2024 (B week)          | June 5, 2024 (B week)  |
| June 6, 2024 (B week)          | June 6, 2024 (B week)  |
| June 7, 2024 (B week)          | June 7, 2024 (B week)  |
| June 10, 2024 (A week)         | June 10, 2024 (A week) |
| June 11, 2024 (A week)         | June 11, 2024 (A week) |
| June 12, 2024 (A week)         | June 12, 2024 (A week) |
| June 13, 2024 (A week)         | June 13, 2024 (A week) |
| June 14, 2024 (A week)         | June 14, 2024 (A week) |

## HERE ARE THE REQUIREMENTS:


- All materials must be placed **CURBSIDE** the night before your collection day.
- Only ONE pass-thru will be made for each street.
- All items must be in either **BROWN PAPER BAGS**, rigid containers of less than 30 gallons or bundled with string (no tape or rope).
- No items over 4 inches in diameter or 4 feet in length.
- Any materials in plastic bags will not be picked up.

**Materials accepted:** Leaves; small brush; hedge and shrub trimmings; and Christmas trees free of tinsel, decorations and lights. Christmas trees must not be in plastic bags.

**Materials NOT accepted:** Grass; hay; straw; tree stumps; root balls; soil; dirt; sod; mulch; bamboo; ornamental grass; pumpkins; cornstalks; acceptable materials not bagged, bundled or containerized; or items exceeding length, width or weight requirements.

# 2024 HOLIDAY CURBSIDE RECYCLING COLLECTION SCHEDULE

**City of Bethlehem**  
**610-865-7082**



**2024**  
**Holiday**  
**Collection**  
**Schedule**

**HOLIDAY SCHEDULE**

|                  | Holiday |
|------------------|---------|
| New Year's Day   | 1/1     |
| Memorial Day     | 5/27    |
| Independence Day | 7/4     |
| Labor Day        | 9/2     |
| Thanksgiving Day | 11/28   |
| Christmas Day    | 12/25   |

\*\*\*If a holiday falls on a weekday (Monday - Friday) and it's your normal pick-up day, recycling will be picked up one day later for the remainder of the week.

| JANUARY 2024 |    |    |    |    |    |    | FEBRUARY 2024 |    |    |    |    |    |    | MARCH 2024     |    |    |    |    |    |    |
|--------------|----|----|----|----|----|----|---------------|----|----|----|----|----|----|----------------|----|----|----|----|----|----|
| S            | M  | T  | W  | T  | F  | S  | S             | M  | T  | W  | T  | F  | S  | S              | M  | T  | W  | T  | F  | S  |
|              |    |    |    |    |    |    |               |    |    |    | 1  | 2  | 3  |                |    |    |    |    | 1  | 2  |
|              | 1  | 2  | 3  | 4  | 5  | 6  | 4             | 5  | 6  | 7  | 8  | 9  | 10 | 3              | 4  | 5  | 6  | 7  | 8  | 9  |
| 7            | 8  | 9  | 10 | 11 | 12 | 13 | 11            | 12 | 13 | 14 | 15 | 16 | 17 | 10             | 11 | 12 | 13 | 14 | 15 | 16 |
| 14           | 15 | 16 | 17 | 18 | 19 | 20 | 18            | 19 | 20 | 21 | 22 | 23 | 24 | 17             | 18 | 19 | 20 | 21 | 22 | 23 |
| 21           | 22 | 23 | 24 | 25 | 26 | 27 | 25            | 26 | 27 | 28 | 29 |    |    | 24             | 25 | 26 | 27 | 28 | 29 | 30 |
| 28           | 29 | 30 | 31 |    |    |    |               |    |    |    |    |    |    | 31             |    |    |    |    |    |    |
| APRIL 2024   |    |    |    |    |    |    | MAY 2024      |    |    |    |    |    |    | JUNE 2024      |    |    |    |    |    |    |
| S            | M  | T  | W  | T  | F  | S  | S             | M  | T  | W  | T  | F  | S  | S              | M  | T  | W  | T  | F  | S  |
|              | 1  | 2  | 3  | 4  | 5  | 6  |               |    |    | 1  | 2  | 3  | 4  |                |    |    |    |    |    | 1  |
| 7            | 8  | 9  | 10 | 11 | 12 | 13 | 5             | 6  | 7  | 8  | 9  | 10 | 11 | 2              | 3  | 4  | 5  | 6  | 7  | 8  |
| 14           | 15 | 16 | 17 | 18 | 19 | 20 | 12            | 13 | 14 | 15 | 16 | 17 | 18 | 9              | 10 | 11 | 12 | 13 | 14 | 15 |
| 21           | 22 | 23 | 24 | 25 | 26 | 27 | 19            | 20 | 21 | 22 | 23 | 24 | 25 | 16             | 17 | 18 | 19 | 20 | 21 | 22 |
| 28           | 29 | 30 |    |    |    |    | 26            | 27 | 28 | 29 | 30 | 31 | 23 | 24             | 25 | 26 | 27 | 28 | 29 |    |
|              |    |    |    |    |    |    |               |    |    |    |    |    | 30 |                |    |    |    |    |    |    |
| JULY 2024    |    |    |    |    |    |    | AUGUST 2024   |    |    |    |    |    |    | SEPTEMBER 2024 |    |    |    |    |    |    |
| S            | M  | T  | W  | T  | F  | S  | S             | M  | T  | W  | T  | F  | S  | S              | M  | T  | W  | T  | F  | S  |
|              | 1  | 2  | 3  | 4  | 5  | 6  |               |    |    |    | 1  | 2  | 3  | 1              | 2  | 3  | 4  | 5  | 6  | 7  |
| 7            | 8  | 9  | 10 | 11 | 12 | 13 | 4             | 5  | 6  | 7  | 8  | 9  | 10 | 8              | 9  | 10 | 11 | 12 | 13 | 14 |
| 14           | 15 | 16 | 17 | 18 | 19 | 20 | 11            | 12 | 13 | 14 | 15 | 16 | 17 | 15             | 16 | 17 | 18 | 19 | 20 | 21 |
| 21           | 22 | 23 | 24 | 25 | 26 | 27 | 18            | 19 | 20 | 21 | 22 | 23 | 24 | 22             | 23 | 24 | 25 | 26 | 27 | 28 |
| 28           | 29 | 30 | 31 |    |    |    | 25            | 26 | 27 | 28 | 29 | 30 | 31 | 29             | 30 |    |    |    |    |    |
|              |    |    |    |    |    |    |               |    |    |    |    |    |    |                |    |    |    |    |    |    |
| OCTOBER 2024 |    |    |    |    |    |    | NOVEMBER 2024 |    |    |    |    |    |    | DECEMBER 2024  |    |    |    |    |    |    |
| S            | M  | T  | W  | T  | F  | S  | S             | M  | T  | W  | T  | F  | S  | S              | M  | T  | W  | T  | F  | S  |
|              |    | 1  | 2  | 3  | 4  | 5  |               |    |    |    |    | 1  | 2  | 1              | 2  | 3  | 4  | 5  | 6  | 7  |
| 6            | 7  | 8  | 9  | 10 | 11 | 12 | 3             | 4  | 5  | 6  | 7  | 8  | 9  | 8              | 9  | 10 | 11 | 12 | 13 | 14 |
| 13           | 14 | 15 | 16 | 17 | 18 | 19 | 10            | 11 | 12 | 13 | 14 | 15 | 16 | 15             | 16 | 17 | 18 | 19 | 20 | 21 |
| 20           | 21 | 22 | 23 | 24 | 25 | 26 | 17            | 18 | 19 | 20 | 21 | 22 | 23 | 22             | 23 | 24 | 25 | 26 | 27 | 28 |
| 27           | 28 | 29 | 30 | 31 |    |    | 24            | 25 | 26 | 27 | 28 | 29 | 30 | 29             | 30 | 31 |    |    |    |    |

Blue Indicates "A" Weeks

White Indicates "B" Weeks

## THEIS/CORNFELD RECYCLING CENTER

- 635 Illick's Mill Road
- Tuesday - Saturday, 10 am - 4 pm
- CLOSED Sunday and Monday

**Materials accepted:** Mixed office paper, junk mail, magazines/shiny paper, hard and soft cover books, cardboard, flat board, telephone books, scrap metals, aluminum, most appliances, textiles/used clothing, plastics #1 through #7, glass bottles and jars, cans and used clothing.

**Please note:** We **CANNOT** accept pressurized tanks, propane tanks, dishwashers, batteries, paint cans (empty or full), electronics and plastic bags.

Please be advised of extreme temperature closings. During summer when real feel temperature approaches 100 degrees, during winter months when real feel temperature nears 0 or if there is lightning in the vicinity, the facility may close unexpectedly. Please plan your visits accordingly. Thank you for your patience and understanding.



# COMFORTABLE, FRIENDLY, SOPHISTICATED AND LIVELY

The Apollo Grill is nestled in the heart of Historic Downtown Bethlehem, pioneered Bethlehem's restaurant scene. We have a fantastic menu that includes over 25 appetizers to choose from!

**Our hours are Tuesday through Saturday from 11 am to 10 pm and the bar is open late night.**



85 W Broad Street, Bethlehem, PA 18018 • 610-865-9600



## Cost free. Stigma-free.

Confidential women's healthcare services at no cost to you. Ever.

### Services Include:

- Pregnancy testing
- Ultrasounds
- STI screenings
- Prenatal vitamins
- Social support services
- Life-skills education
- Baby Boutique
- Door of Hope Maternity Home

To make an appointment for Bright Hope's no-cost services, or to support Bright Hope, call 610-821-4000 or go to [BrightHopeCenters.org](http://BrightHopeCenters.org).



**A message to the Bethlehem Community.**  
The Bethlehem Area School District and the City of Bethlehem work together to build our next generation of #BASDcommunity Citizens. We are proud of our BASD students and graduates who go on to do amazing things both in our community and around the world. This year, we continue to highlight our graduates, students and staff through our BASD eNews. Did you know that some of our students have even gone on to become the Mayor of our City? Did you know that even Mayor Reynolds is #BuiltbyBethlehem?

Our school district offers many diverse opportunities for students. We invite you to join us for our upcoming plays, spring concerts and spring sporting events. For more information, visit our website at [basdschools.org/](http://basdschools.org/).

Thank you for all your support.

Dr. Jack P. Silva  
Superintendent of the Bethlehem Area School District



*Donegan Elementary students discuss leadership qualities with Mayor Reynolds in his Conference room.*



*BASD 5th graders share their vision for Bethlehem and serve as the Mayor's Grand Marshals for the city Halloween Parade.*



*Lincoln Elementary School students receive their parade award from Mayor Reynolds.*



*Freedom High School Theatre Company performs "It's a Wonderful Life."*



*East Hills Middle School Theatre Company performs "High School Musical."*



*Liberty High School Grenadier Band marches in the city Halloween Parade.*

## BETHLEHEM FOOD CO-OP

Hello from the Bethlehem Food Co-op! 2024 is the year of fresh food, the year of our grand opening and the year of providing the residents of Bethlehem and surrounding communities with a full-service grocery store located at 250 E. Broad Street where everyone is welcome.

Our membership has grown significantly in 2023; to date, we have 1,495 members. Membership is vital to our success: Statistics show that members shop in the store 4-5 times per week and future members 2-3 times per week. You can join the co-op online at [bethlehemfood.coop/membership-shop/](http://bethlehemfood.coop/membership-shop/) for as little as \$10 per month.

### What's new at the Co-op?

We have many partners and have a team reaching out to increase our partnerships across Bethlehem. Some of our partners include Northampton Community College, the Bethlehem Public Library, the Kellyn Foundation and many small businesses that give Co-op members lifetime discounts. In addition, we have commissioned a local artist, Matt Halm, to paint a mural in our store that reflects this community.

We also are getting ready to re-brand. Our new name will be the **Bethlehem Co-op Market**. Watch for the launch of this exciting new brand, new colors and new name.

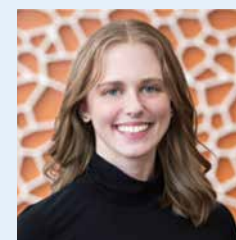
In January, Eric, our General Manager, hired Cora Savage as our new Marketing Manager, and we will continue to add to the team as we move forward.

And, last but not least, we are ready to begin the "fit out" in the store. We have hired Boyle Construction, and they began the work this past February.

In 2024, watch us grow, watch us open in late summer and join us in this adventure as we become Bethlehem's first ever full-service Co-op.



*Co-op partner, the Kellyn Foundation.*



*Marketing Manager Cora Savage.*







# SOUTHSIDE ARTS DISTRICT

## Events Schedule

### 2024 SPRING AND SUMMER EVENTS



#### LIVE ON THE GREENWAY CONCERT SERIES

May 19 and 26 / June 2 and 9 / 12 – 3 pm  
Harmony Pavilion, Bethlehem Greenway  
Join us for four weekends of live music, food and drink outdoors at Harmony Pavilion on the SouthSide Greenway.



#### SIP & SLIDE SUMMER COCKTAIL CRAWL

June 15 / 1 – 5 PM  
\$35 per adult (ages 21+ only)  
Take a sip of summertime and sample seasonal summer cocktails across South Bethlehem's beverage district.



#### SUMMER RESTAURANT WEEK

July 15 – 21  
Dine from exclusive pre-fixed menus and special features while supporting some of our favorite local restaurants, such as Cafe the Lodge, Cheesy Charlie, F&A Grog House, General Zapata, Handheldz, Roasted, Social Still, Toastique and Zest Bar & Grille.



FIRST FRIDAY  
SOUTHSIDE

Experience South Bethlehem's nightlife the first Friday of every month.

- Live music
- Dining
- Brewpubs
- Networking
- Performing arts
- Artist talks and creative activities



## SUPPORT SOUTHSIDE

DISCOVER THE  
*Art & Soul*  
OF BETHLEHEM

Connect with us on social media!

@southsideartsdistrict



# Downtown Bethlehem Association & Bethlehem Chamber Of Commerce EVENTS

#### LIVE IN THE GARDEN

An eight week concert series created in partnership with the City of Bethlehem and Bethlehem Chamber of Commerce, sponsored by Zoellner Arts Center, will take place in the Bethlehem Rose Garden on Saturdays from May 4 – June 22 from 5:30 – 8 pm. This family-friendly event includes live music of various genres, food trucks and beer and wine!



#### SUMMER 2024 RESTAURANT WEEK

Visit participating Downtown Bethlehem restaurants from June 23 to June 29. Enjoy pre-fixed menus and dining specials throughout the week. #POSTYOURPLATE for a chance to win a gift card to every participating restaurant; winners are selected at random.



#### SUDS AND ROSES

Purchase a tasting passport to sip samples from 15+ breweries, play games, listen to live music and eat from a local food truck in the Bethlehem Rose Garden on June 1!



#### HARVEST FEST – SAVE THE DATE!

The most popular street fair in the Lehigh Valley will take place on Saturday, October 12. It includes wine, beer and soup tasting trails. This event features multiple stages, live music, local food and creative artisans.



[VisitHistoricBethlehem.com](http://VisitHistoricBethlehem.com)

[LehighValleyChamber.org](http://LehighValleyChamber.org)



# TOUCHSTONE THEATRE'S SUMMER CAMPS

Unleash your child's creativity through the magic of theatre! Touchstone offers innovative theatre arts education to hundreds of children, teens and young adults every year. Special focus is given to working with organizations and community partners to reach those who might not otherwise experience theatre and to serve an audience diverse in age, experience and background.



Touchstone Theatre strives toward a community of civic engagement through artistic expression. We seek to create art that celebrates and uplifts, as well as confronts and challenges.



**TOUCHSTONE  
THEATRE**  
*Theatre that Transforms*

**Touchstone.org**  
**321 East 4th Street**  
**Bethlehem, PA 18015**

## ROSE GARDEN

The Bethlehem Rose Garden has undergone a dramatic change over the past three years through the efforts of community volunteers.

Along with the roses, the garden now showcases spring flowers, perennials, varied annuals and native plants.



Help is needed to maintain this beautiful public space. Consider becoming a Rose Garden volunteer; no experience is necessary and we offer community service hours to students. Group work is done Saturdays morning from 10 am – 12 pm, April through October. Put on your garden gloves and join us!

You may also donate to help buy flowers for the Rose Garden by contacting the non-profit Mount Airy Neighborhood Association, which oversees the volunteer efforts. Visit their Facebook page at [facebook.com/people/Bethlehem-Historic-Rose-Garden-at-the-Rose-Garden-Park/100069301299581/](https://facebook.com/people/Bethlehem-Historic-Rose-Garden-at-the-Rose-Garden-Park/100069301299581/).

Please e-mail [bjkozero@aol.com](mailto:bjkozero@aol.com) with any questions.



# The Bethlehem Fine Arts Commission

*bringing  
fineARTS  
to the community*

## 2024 SPRING & SUMMER EVENTS

### ROTUNDA GALLERY ART EXHIBITS

There are year-round exhibits at Town Hall. Please visit [bfac-lv.org](http://bfac-lv.org) or scan the QR code below for a complete schedule.

#### Upcoming Shows:

- *BASD Student Art Exhibition*: April 7 – May 14  
Artist Reception: April 7, 2 – 4 pm
- *Bethlehem Palette Club Exhibition*: May 20 – June 30  
Artist Reception: June 30, 1 – 3 pm
- *Tim Higgins Digital Art*: July 3 – August 13  
Artist Reception: July 14, 2 – 4 pm

### 59TH ANNUAL FINE ART & CRAFT SHOW

May 11 – 12, 2024

Each year, the Bethlehem Fine Arts Commission is pleased to host its two-day Mother's Day Weekend Fine Art & Craft Show on Main Street in Historic Bethlehem! Over 70 juried artists and craft artisans are selected to participate in the show. Observe our Artist in Residence at work, ready to engage in conversation or answer questions. And for children of all ages, look for the tent with the bright colors and lots of activity – join in on a fun, interactive art project, or make mom a handmade gift or card!

**FREE ADMISSION.**

### SCULPTURE GARDEN CONCERT SERIES

Free concerts, beginning at 6 pm, are held on Fridays in June. Bring a chair and enjoy the music in our beautiful Sculpture Garden, which is located just east of City Hall. Rain location: Bob Cohen Room at the Bethlehem Public Library.



Left to right: Year-round Rotunda Shows; Mother's Day Weekend Fine Art & Craft Show; and Sculpture Garden Concert Series.

## LEADERSHIP IN THE ARTS

### Advocacy, Knowledge, Celebration

"To serve the community as a resource and an advocate to nurture, promote and sustain the Arts in Bethlehem."

**P.O. Box 1851 • Bethlehem, PA 18016**

**For all information, visit [bfac-lv.org](http://bfac-lv.org).**





**CITY OF BETHLEHEM**

10 East Church Street • Bethlehem, PA 18018

ECRWSS EDDM  
Postal Customer

PRSRST STD  
US POSTAGE  
PAID  
LEHIGH VALLEY, PA  
PERMIT NO 121

*Feel good about  
your plumber.*

We are the Lehigh Valley's  
expert in plumbing, water  
heaters, drain cleaning, pipe  
repairs and roofer service.

Fast, clean, quality service with fair  
upfront prices. That's our promise to you!

**ROBINSON  
PLUMBING**



[RobinsonPlumbing.com](http://RobinsonPlumbing.com)

**610-351-9889**

Master LIC#208 Reg #PA024396



**Water Heaters**



**Water Softeners**



**Plumbing Fixtures**



**Gas Problems**



**Rooter Servicing**



**Water Filtration  
Systems**



**Emergency  
Plumbing Calls**



**Fixture Upgrades  
and Installations**



**Home Improvement**



**Construction Projects**