



Photo Credit: Nathan Johnson

**IN THIS ISSUE:**

- 13** Resources and Assistance
- 16** Recreation Programs and Events • Fall 2025/Winter 2026
- 18** 2026 Curbside Christmas Tree Pickup Schedule



# IN THIS ISSUE...

- 04 Mayor's Address
- 05 A Note From City Council
- 06 Bethlehem Fire Department
- 07 Bethlehem Police Department
- 09 Department of Community and Economic Development
- 12 Northside Alive
- 13 Resources and Assistance
- 14 The Department of Water and Sewer Resources
- 14 City of Bethlehem Taxes
- 15 Public Works
- 15 2025 Street Sweeping Schedule
- 16 Recreation Programs and Events, Fall 2025/Winter 2026
- 18 Fall Yard Waste Curbside Pickup Schedule
- 18 Curbside Christmas Tree Pickup Schedule
- 19 2025 Holiday Curbside Recycling Collection Schedule
- 19 Theis/Cornfeld Recycling Center
- 19 Yard Waste Drop Off
- 22 Bethlehem Area Public Library
- 25 Bethlehem Area School District
- 27 Southside Arts District Fall/Winter Schedule
- 28 Downtown Bethlehem Association Events
- 29 Bethlehem Rose Garden
- 30 The Bethlehem Fine Arts Commission Events



As a requirement of the Municipal Waste Planning Recycling and Waste Reduction Act, the City of Bethlehem is required to notify residents of our recycling programs twice a year. Please enjoy this newsletter and then place it in your recycling container. Or better yet, pass it along for someone else to learn about all the good things that are happening in the City of Bethlehem.

## City of Bethlehem Directory

**Bethlehem Service Center** .....610-865-7000

Available for non-emergencies, 24 hours a day, 7 days a week, 365 days a year.

• EMS/Fire/Police Emergency .....	911
• Payment Center .....	610-865-7046
• Health Department.....	610-865-7083
• Water and Sewer.....	610-865-7070
• Public Works.....	610-865-7050
• Recycling Department.....	610-865-7082
• Pothole Hotline.....	610-865-7053
• Graffiti Hotline.....	610-865-7065
• Community and Economic Development .....	610-865-7085
• Planning/Zoning.....	610-865-7088
• Construction/Permits/Codes/Inspections.....	610-865-7091
• Recreation Department .....	610-865-7080

10 East Church Street, Bethlehem, PA 18018

Lobby Hours: 8 am – 4:30 pm, Monday – Friday

[bethlehem-pa.gov](http://bethlehem-pa.gov)

## Email Alerts

Register to receive emails of critical City updates, news and alerts at [bethlehem-pa.gov](http://bethlehem-pa.gov). Click “Online Services,” then “Sign Up for City Alerts.”

## Follow Us on Social Media

Stay up to date on current events and announcements:

 City of Bethlehem

 [cityofbethlehempa](https://www.instagram.com/cityofbethlehempa)

 [@CityBethlehem](https://twitter.com/CityBethlehem)

## Bethlehem Mayor

J. William Reynolds

## City Council Members

Michael G. Colón, *President of Council*

Rachel Leon, *Vice President of Council*

Hillary Kwiatek      Colleen Laird      Grace Crampsie Smith

Kiera Wilhelm      Bryan G. Callahan

Contact your Council Member directly through the Council webpage at [www.bethlehem-pa.gov/](http://www.bethlehem-pa.gov/).

## 2025 City Council Meeting Dates

All Council Meetings begin at 7 pm unless otherwise specified.

- |                      |                      |
|----------------------|----------------------|
| • September 2 and 16 | • November 5* and 18 |
| • October 7 and 21   | • December 2 and 16  |

\*Wednesday, due to Election Day

## Are you interested in supporting your community?

Please email [marketing@ksand.com](mailto:marketing@ksand.com) for more information on how your ad can be featured in Bethlehem's magazine. This publication reaches over 32,000 addresses and is a great way to promote your business.

# Pediatric Care in Your Neighborhood

**Akiko Kawamura, MD**

General pediatrics



**NOW ACCEPTING NEW PATIENTS**

**Kids are not little adults.** They're built differently, which is why they require specialized care that's built just for them. Now, you can find the comprehensive care your child needs to stay healthy and grow up strong, close to home.

**LVPG Pediatrics—Madison Farms**  
4807 Freemansburg Ave., Easton

**888-402-LVHN**

**[LVHN.org/MadisonFarmsPeds](https://LVHN.org/MadisonFarmsPeds)**

 **Lehigh Valley  
Reilly Children's Hospital**

part of  **Jefferson Health**

# Mayor's Address to the City of Bethlehem

**J. William Reynolds**



Collaboration, creativity and an unwavering commitment to our residents are the keys to our community's success so far in 2025. We are rising to meet new challenges and keep existing promises at a critical time. From the start of the year, we

found ourselves reacting to the reprioritization of federal funding, which impacts our work and the work of our community partners who serve our most vulnerable neighbors. But we have continued to recognize the good, steadfast progress happening here in Bethlehem—investing in parks and trails, improving multimodal transportation infrastructure, advancing affordable and attainable housing solutions and bringing people together to build community and enjoy the high quality of life present across our neighborhoods and in our downtowns (just to name a few). This is possible because of the strength of our public/private partnerships, the City's responsible stewardship of resources and promises kept by local, state, and county offices.

## **Parks and Trails**

The City is completing a community-driven parks and recreation master plan, 40 in 10: Every Park in Ten Years, which sets out a roadmap for improvements to all the City's parks over the next 10 years. The first round of exciting investments is underway with a transformative remodel of Friendship Park in the Northside Alive neighborhood, a refresh and upgrade to Dutko Park at Pembroke Road and Stefko Boulevard, a second phase of improvements at the Rose Garden in West Bethlehem and the completion of the last phase of the Monocacy Way Trail to connect from Schoenersville Road to the D&L Trail. High-quality parks and trails set our City apart and contribute to a thriving and healthy community.

## **Multimodal Transportation**

We are committed to helping people get around our City safely, focusing on improving street and trail infrastructure and making our roadways more accessible for everyone, regardless of their mode of transportation. We are launching a Complete Streets and Bike Infrastructure Plan at the same time that we are advancing the East and West Broad Street transformative corridor improvements supported by the U.S. Department of Transportation through the Safe Streets and Roads for All federal grant program and by the Lehigh Valley Transportation Study (LVTS). Those \$10 million and \$1.4 million investments will help to create safer intersections, upgrade crossings and modernize

streetscapes along the corridor. LVTS also committed \$1.8 million to the upcoming conversion of Linden Street (between Church Street and Fairview Street) into a two-way road to improve traffic flow and enhance safety for drivers, pedestrians and cyclists. Additionally, with great gratitude for the PA Department of Conservation and Natural Resources, the LVTS, and Northampton County, the City of Bethlehem received \$1.3 million to complete the Bethlehem Greenway. This next phase of the Greenway's development furthers the vision and continues the efforts of several City administrations over the past several decades. All of this work aligns with our Climate Action Plan and reaffirms Bethlehem's mission to move people (and not just cars) through the city safely, sustainably and equitably.

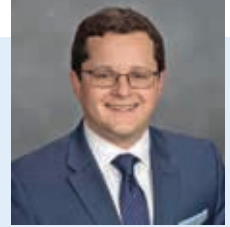
## **Housing Solutions**

Affordable housing and homelessness continue to be the top challenges we are witnessing across the United States, but strides are being made locally. Thanks to a \$1.45 million state grant, we will help convert a building on Packer Avenue in South Bethlehem into an 11-unit emergency family shelter, which will be operated by the Lehigh Conference of Churches and help fill a void in the region's emergency sheltering system. The Bethlehem Redevelopment Authority recently received \$800,000 to rehabilitate a blighted Southside property on E. 4th Street into four apartment units with at least three units being affordable to individuals earning at or below 80% of the area income. Other affordable and attainable housing opportunities, like the 120-unit Gateway on 4th project, will begin next year, pending funding approvals. And we also just completed our Pembroke Choice Neighborhoods Plan, which showcases how we and the Bethlehem Housing Authority plan to replace 196 units of low-income housing with over 400 new units in a mixed-income development that incorporates well-functioning services and public assets into the community. With these and multiple other ongoing projects, we partner with incredible non-profit organizations and local institutions to find creative ways to collaborate and make progress. We are grateful in particular to Conference of Churches, Bethlehem Emergency Shelter, New Bethany, Community Action Development Bethlehem, Community Action Lehigh Valley, Lehigh University, the Bethlehem Housing Authority and the Bethlehem Redevelopment Authority, among others, that are working with us every day to provide housing solutions in our community.



## A NOTE FROM CITY COUNCIL

### Council President's Report



Michael G. Colón

As we get into the fall and winter months, we look forward to some of our favorite yearly events around town, a successful school year and a joyful holiday season. Please be reminded that City Council meets the first and third Tuesday of each month at 7 pm in Town Hall. All meetings are public, and all are welcome to attend. Council votes on everything from new laws to Bethlehem's annual budget. If you're not able to make it in person, please tune in to our YouTube livestream or catch up on the City of Bethlehem Council channel.

All Council members can be reached by email or by calling the City Clerk's office at 610-865-7130. City Council also appoints volunteers to various city boards, including the Library Board of Directors, the Environmental Advisory Council and the Bethlehem Human Relations Commission. Anyone interested in volunteering is invited to contact the City Clerk's office.

**Michael G. Colón**  
**President of Bethlehem City Council**



L-R: C. Laird, R. Leon, K. Wilhelm, G. Crampsie Smith, B. Callahan, H. Kwiatek and M. Colón.

### Coming together

Part of what really makes Bethlehem special is our people and the fact that we make time for one another, celebrating our diversity and our shared experiences as members of the Bethlehem community in every corner of the city. In addition to plenty of regular events (like annual flag raisings for various cultural groups, Live in the Garden, Musikfest and other local art, music, and sporting events), this year has seen some "firsts." On Sunday, January 26, we celebrated our first ever Indian Republic Day flag raising, led by friends of the Hindu Temple Society, and on July 26th, we commemorated the 35th anniversary of the Americans with Disabilities Act with a panel and flag raising, co-led by several community leaders and organizations that discussed the past and current achievements regarding local disability advocacy and our hopes for the future. We also invited our residents and friends across the valley to participate in our first World Heritage Community Celebration on September 6, which highlighted not only the sites and history that helped us earn the World Heritage designation, but our cultural organizations, sister cities and partners that also make up Bethlehem's growing diverse community. Looking ahead, be sure to join us on October 26 for this year's Halloween Parade and on Friday, November 28, for the annual Tree Lighting Ceremony at Payrow Plaza.

None of these accomplishments could have happened without multiple partners at the table in the spirit of collaboration. We recognize that no one can do everything, but we can all do something, and we all share the credit when we experience communal successes. We look forward to seeing you at our many end-of-year celebrations, and we wish you a happy and healthy new year!



Photos from left to right:

May 15 - "Bike to Work Day" led by the Coalition for Appropriate Transportation, the Bethlehem Health Bureau and Bethlehem Police Department.

July 23 - City of Bethlehem announces major advancements in carbon reduction and multimodal transportation network on the South Bethlehem Greenway.

July 26 - Bethlehem commemorates the 35th anniversary of the passing of the ADA with a panel and flag raising.

## BETHLEHEM SERVICE CENTER

**The Bethlehem Service Center (BSC) is available for residents to contact for non-emergencies 24 hours a day, seven days a week, 365 days a year.**

*There are four ways to contact the BSC for non-emergencies.*

**Remember, in the event of any type of emergency, DIAL 911.**

- 1. Call 610-865-7000.** This number can be reached by house phone line or by cell phone. This will dial directly into the BSC for non-emergency questions/city inquiries or city services.
- 2. Bethlehem Service Center App:** The app is available to download for most cell phones and tablets on either the Play Store or the App Store on your device. Search for "Bethlehem Service Center" or "City of Bethlehem" under Apps, or scan the QR code to the right. Access key information at your fingertips with this easy-to-use mobile application. Receive emergency notifications, submit a service request, find out what to do in Bethlehem, find parking, view bus schedules, pay your bills and much more.
- 3. Email:** The BSC can also be reached via email at [bethlehemservicecenter@bethlehem-pa.gov](mailto:bethlehemservicecenter@bethlehem-pa.gov).
- 4. City of Bethlehem Web Page and Portal:** Visit [bethlehem-pa.gov](http://bethlehem-pa.gov), click "Online Services" in the main menu, then click "My Account." Here, you will be able to submit a service request.

*Examples of "non-emergency" customer service: dirty water, potholes that need to be repaired, debris in the street, recycling issues, etc. The BSC will also provide assistance to any City of Bethlehem residents who may have questions or concerns that need to be addressed.*

Download on the App Store



GET IT ON Google Play



The BSC app is **FREE** to download. Open your phone's camera and point at the QR code!

# BETHLEHEM FIRE DEPARTMENT

The Bethlehem Fire Department responds to a wide variety of emergencies throughout the City of Bethlehem. Ensuring the safety of our residents and visitors is our top priority.



## GRADUATION

On June 6, 2025, Mayor Reynolds administered the Oath of Firefighter to the newest members of our fire department family. We are proud to have them serving the City of Bethlehem. Congratulations to all the graduates, and thank you to the City of Allentown for providing an exceptional academy.



Graduation, L-R: Chief Matthew Griffin, Brody Merker, Robert Hager, Devon Troxell, Kyle Jimenez, Kyle Knauss, Daniel Lovett, III, Joseph Cincilla, Assistant Chief Craig Baer and Retired Fire Chief Michael Reich.

## RECRUITS IN TRAINING



Recruits in Training, L-R: Kevin Merle, Brandon Shanley, Ryan Bowers and Brandon Gubich.

**Our motivated team of fire fighters and fire officers have one common goal and that is to provide the most efficient services possible.**

# EXPANSIVELY *welcoming*



FIRST PRESBYTERIAN  
CHURCH OF BETHLEHEM

2344 Center Street | Bethlehem | 610-867-5865 | [fpc-bethlehem.org](http://fpc-bethlehem.org) | Facebook: @firstpresbethlehem

# SETTON

R E A L T Y

**SERVING THE LEHIGH VALLEY AND BEYOND FOR OVER 40 YEARS**  
RESIDENTIAL | COMMERCIAL | LAND DEVELOPMENT | AUCTION SERVICES

WE ARE READY AND EAGER TO SERVE ALL YOUR REAL ESTATE NEEDS.

**610-821-1212 | [SettonRealty.com](http://SettonRealty.com)**

# BETHLEHEM POLICE DEPARTMENT

The Police Department's goal is simple: to make Bethlehem a safe place for citizens to raise and nurture a family and for our business community to prosper.



## BETHLEHEM POLICE HOST ANNUAL JUNIOR POLICE ACADEMY

The City of Bethlehem Police Department's School Resource Officers (SROs) recently held their annual Junior Police Academy at Northeast Middle School from June 16-27, 2025. This special two-week program was open to students from all four of the city's middle schools, offering them a unique opportunity to learn about law enforcement and leadership.

Throughout the program, cadets participated in a variety of classroom sessions, where they met and spoke with law enforcement professionals. They also took part in team-building exercises and physical agility activities designed to promote confidence, cooperation and healthy lifestyles.

Thanks to Lehigh University, cadets had the chance to tackle the university's low-ropes course, where they focused on decision-making, effective communication and strengthening their teamwork skills.

A highlight of the academy was the opportunity for cadets to hear from numerous officers within the Bethlehem Police Department's diverse units. Presentations from Patrol, Mounted Unit, Special Operations, Traffic, Community Services, Investigations, Forensic Services, K-9 and the Bethlehem Service Center gave cadets an inside look at the many career paths available in law enforcement, along with the qualifications needed for each.

The program also welcomed criminal justice professionals from outside agencies. Cadets met representatives from the ATF, Northampton County Juvenile Probation, Pennsylvania State Police,



**The Junior Police Academy gave cadets an inside look at the many career paths available in law enforcement, along with the qualifications needed for each.**

Bureau of Liquor Control Enforcement, Lehigh County Auto Theft Task Force and local magistrates, as well as the City of Bethlehem Fire Department and Paramedics, among many others.

Each day, cadets were treated to breakfast and lunch, generously provided by Aramark Food Services and several local businesses. A heartfelt thank you goes out to Goosey Gander, Wegmans, Martellucci's, Borderline Restaurant, Lehigh Pizza, Casa Del Mofongo, and Subway for supporting our young future leaders.

The Bethlehem Police Department extends its sincere gratitude to the Bethlehem Area School District, the many law enforcement agencies and professionals who gave their time, the supportive local businesses, the aspiring students who chose to participate and, of course, their families who encourage their dreams and allowed us the privilege of opening a window to their future.

BASD middle school students interested in applying for the 2026 Junior Police Academy can speak with their SRO to obtain an application.

## Good is the start for great.

At Good Shepherd, we believe even the greatest challenges can be the building blocks of limitless possibilities for your physical and speech therapy needs. Because when you start with good, great is never far behind. Ask about a free 15-minute screening.

**Good Shepherd  
Rehabilitation**



**Bethlehem**  
610.868.2211  
**Bethlehem Township**  
610.882.9611



# THE REGION'S FIRST & ONLY

## MEDICAL SCHOOL



**Zach Chomitzky – Class of 2028 | Bethlehem, PA**  
*Freedom High School*  
*Villanova University*



Temple/St. Luke's student Zach Chomitzky is a strong believer that understanding, connection, and human empathy play vital roles in medicine and connecting with patients. Through working as an Emergency Department tech, he gained confidence in patient communication. Now that he's training to be a physician in the community he grew up in, he's grateful to be in a medical school that always promotes compassionate care. "Being a doctor is all about human connection, and I've always been close with my community. Here, I feel like I'm contributing in a positive way."

[sluhn.org/SOM](https://sluhn.org/SOM)



# Community Planning

The 40 in 10 Plan is Taking Shape!



**We Build  
Bethlehem**

Bethlehem's online  
engagement hub

Bethlehem's "40 in 10" Parks Master Plan is taking shape! This community-driven plan will guide decision-making and strategic investments for the rehabilitation and maintenance of the City's network of parks and recreation opportunities over the next ten years.

Since the project's kick-off at the first virtual public meeting in March, Bethlehem residents have been making their voices heard to shape the plan. Over the spring and summer, the City and consultants from Omnes ([www.omnes.studio](http://www.omnes.studio)) hosted 15 different pop-up engagement events at parks, festivals, and other community gathering spots across the city, capturing hundreds of residents. In addition, feedback from the project's first community survey, which received over 800 responses, identified a diverse range of needs, priorities, and ideas for making public spaces more inviting, inclusive, and connected

in Bethlehem. Four focus group meetings, 13 key person interviews, and extensive park inventory and analysis deepened the understanding of each park's needs.

Guided by this rich community feedback, the project team presented initial planning strategies and concepts at the project's second virtual public meeting in July. A recording is available on **We Build Bethlehem** ([webuild.bethlehem-pa.gov](http://webuild.bethlehem-pa.gov)), the City's online engagement hub, where you can catch up on the project, see how community input is shaping the vision, and sign up for updates.

On **Tuesday, November 12 at 6:30 p.m.**, the City will host the third virtual public meeting via Zoom to present the draft plan. This meeting will also mark the launch of the second project survey, giving residents the opportunity to review the draft and share feedback before it is finalized. Mark your calendars, and help shape the future of Bethlehem's parks for years to come!

## Take advantage of our latest special offers!



Discover competitive offers &  
rates at [unitybank.com/specials](http://unitybank.com/specials)

🏠 EQUAL HOUSING LENDER | MEMBER FDIC

## CITY OF BETHLEHEM

# Health Bureau

## FREE SEXUAL AND REPRODUCTIVE HEALTH CLINICS AVAILABLE FOR BETHLEHEM RESIDENTS

You can visit the Bethlehem Health Bureau, located in City Hall, for free, quick, confidential testing and treatment, if needed. Our STI clinic provides testing for sexually transmitted infections, including chlamydia, gonorrhea, syphilis and HIV. The CDC recommends that everyone between the ages of 13 and 64 get tested for HIV at least once in their lifetime. STI testing is also encouraged at least once a year for anyone sexually active, with every new partner or if experiencing symptoms.

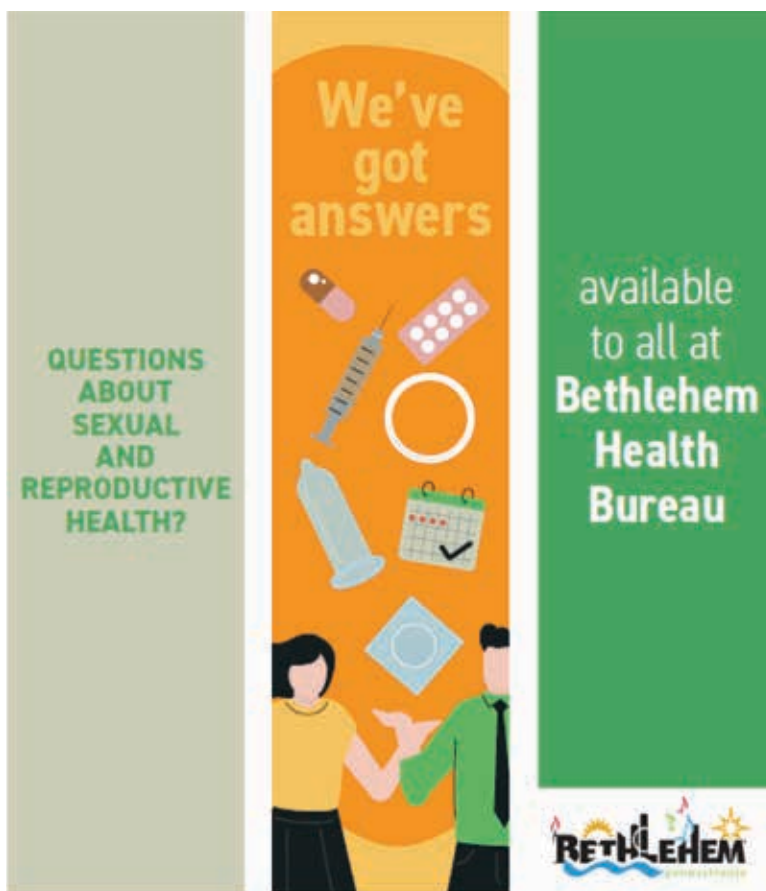
Our Sexual and Reproductive Health Clinic includes a visit with a nurse practitioner who can help with birth control options, emergency contraception (Plan B), pregnancy testing, Pap tests and pelvic exams, and breast exams. Visits like these are essential to your health and wellbeing and can help you make informed decisions about pregnancy planning—whether that's now, for the future or not at all.

And don't forget, condoms are always available at no cost during our regular hours, Monday – Friday, 8 am – 4:15 pm.

### The following clinics require an appointment:

- **STI Clinic** Tuesdays: 1 – 3 pm & Wednesdays: 8:30 – 11:30 am.
- **Family Planning Clinic** Wednesdays: 9 – 11:30 am.

**Call 610-865-7083 to schedule your appointment today!**



PROUDLY SERVING THE COMMUNITY  
for over  
**30**  
years

**WERKHEISER**  
ELECTRIC

**Powered by integrity.**







Scan code for limited time \$75 savings

**610.866.1076**

PA010621 • NJ18491

LEARN MORE ABOUT  
**Bethlehem, PA!**

 [bethlehem-pa.gov](http://bethlehem-pa.gov)
 [cityofbethlehempa](https://www.instagram.com/cityofbethlehempa)

 City of Bethlehem
  @CityBethlehem




Photo credit: Craig Roberts

**BETHLEHEM**  
pennsylvania



# From Your SMALLEST to Your LARGEST Needs!

*Conveniently located in the Heart of the Lehigh Valley*

Transfer Station Open to the Public  
Container Service • Trash Removal  
Competitively Priced

Residential  
Commercial  
Industrial

## 610-759-6398

**EastPennSanitation.com**

Serving Lehigh & Northampton Counties



## Advertise With Us!

There are 75,600+ residents in the city of Bethlehem. Take advantage of this opportunity to promote your business while supporting your community at the same time!

Interested? Email us at **[marketing@ksand.com](mailto:marketing@ksand.com)** for more information on how your ad can be featured in this magazine.





Northside Alive is a community-driven neighborhood revitalization process launched in 2018 by the City of Bethlehem and Community Action Development Bethlehem.



Visit [northsidealive.org](https://northsidealive.org) or scan the QR code to learn more about Northside Alive.



Please visit our website, [northsidealive.org](https://northsidealive.org), for additional news and information! Northside Alive is always seeking community volunteers to join our committees. Visit [northsidealive.org/volunteer](https://northsidealive.org/volunteer) to sign up and help us spread the word.

Dates and details about upcoming events are available at [northsidealive.org/events](https://northsidealive.org/events) and on our social media pages.

**Follow us on social media:**

@northside\_alive | @Northside Alive

This newsletter serves to notify the community about events and investments in the City's Northside 2027 HUD-designated Neighborhood Revitalization Strategy Area (NRSA). NRSA's are intended to revitalize a targeted neighborhood by encouraging a coordinated approach through comprehensive place-based community development efforts. Translation and disability accessibility services are available upon request if you would like to learn about Northside activities and how to participate, including access for individuals with hearing and visual impairments. If you would like accommodations to access Northside Alive information, please call the Community Development Bureau at 610-865-7085. Servicios de traducción y accesibilidad para discapacitados disponibles previa solicitud si desea obtener información sobre las actividades de Northside y cómo participar, incluido el acceso para personas con discapacidades auditivas y visuales. Si desea adaptaciones para acceder a la información de Northside Alive, llame a la Oficina de Desarrollo Comunitario al 610-865-7085.



- 118 Board-Certified Clinical Specialists
- In Your Neighborhood!



For an appointment call **484-526-5025** or visit [www.stlukespt.com](https://www.stlukespt.com)

# RESOURCES AND ASSISTANCE FOR CITY OF BETHLEHEM RESIDENTS



**FOR ASSISTANCE, DIAL 2-1-1**

**IN CASE OF EMERGENCY, DIAL 9-1-1**

## NEED EMERGENCY SHELTER?

- Bethlehem Emergency ..... 484-379-6694
- New Bethany Ministries ..... 610-691-5602
- Victory House of Lehigh Valley ..... 610-691-3373

## NEED HELP WITH RENTAL PAYMENTS OR HOUSING ASSISTANCE?

- American Red Cross (Disaster Assistance) ..... 610-865-4400
- Bethlehem Emergency Services (General) ..... 610-865-7118
- Salvation Army (Rental/Housing Assistance) ..... 610-867-4681
- Turning Point (Rental/Housing Assistance)  
Domestic Abuse Hotline ..... 610-437-3369
- Victory House of Lehigh Valley  
(Housing Assistance) ..... 610-691-3373
- New Bethany Ministries  
(Rental/Housing Assistance) ..... 610-691-5602 (option 3)
- Community Action Lehigh Valley  
(Rental/Housing Assistance) ..... 610-691-5620
- Bethlehem Housing Authority  
(Rental/Housing Assistance) ..... 610-865-8300
- Northampton County Housing Authority  
(Rental/Housing Assistance) ..... 610-759-8488

## NEED LEGAL ASSISTANCE WITH HOUSING?

- North Penn Legal Services ..... 610-317-8757

## NEED PUBLIC TRANSPORTATION?

- LANTA/Metro ..... 610-776-7433
- LANTaVan ..... 610-432-3200

## NEED HELP PAYING BILLS?

### First Energy

- Repair/Customer Service ..... 1-800-545-7741
- First Energy WARM Program ..... 1-888-282-6816

### PPL

- Repair/Customer Service ..... 1-800-342-5775
- PPL WRAP Program ..... 1-888-232-6302

### UGI

- Emergencies ..... 1-800-276-2722
- General Office ..... 1-800-276-2722
- UGI WARM Program ..... 1-800-844-9276

### Electric

- Community Action Committee of the Lehigh Valley  
(PPL Bill) ..... 610-691-5620

### Gas

- Lehigh County Energy Assistance  
(LIHEAP Program) ..... 610-821-6509
- Northampton County Energy Assistance  
(LIHEAP Program) ..... 610-250-1785
- Salvation Army (UGI Operation Share Program) .... 610-432-0129  
..... 610-867-4681

**City Water/Sewer Customer Service** ..... 610-865-7070

**Water/Sewer Off Hours** ..... 610-865-7077

For more information on housing, please visit [bethlehem-pa.gov/Community-Economic-Development/Community-Development/Housing](http://bethlehem-pa.gov/Community-Economic-Development/Community-Development/Housing) or scan the QR code.



# 2025 BETHLEHEM STAR



From  
**JOY TO THE  
WORLD®**  
(Made in Poland)

**BETHLEHEM CHRISTMAS SHOPPE AND**

**HAND CUT  
CRYSTAL**

*Exclusive Star symbolizing Hope, Renewal and Love!*

**AVAILABLE NOW!**

452 Main Street, Historic Bethlehem  
610-868-2427 • [BethlehemChristmasShoppe.com](http://BethlehemChristmasShoppe.com)

**B1<sup>st</sup>**

**Bethlehem 1<sup>st</sup>**

Federal Credit Union

Bethlehem 1st serves 44 groups including employees of the City of Bethlehem, Bethlehem Area School District, Lehigh University and Moravian University. We also have several student groups!



A full list of eligible groups can be found on our website.

**[beth1st.org](http://beth1st.org)**

## Lead Service Lines

The City of Bethlehem is actively working to identify and replace all lead service lines in its drinking water system over the next several years. We are required to send annual notifications to all drinking water customers if their service line is known to be one of the following: a) lead, b) galvanized steel that is (or was) downstream of a lead line at any point in time, or c) lead status is unknown, i.e. unknown pipe material. This notification requirement is part of the Lead and Copper Rule Revisions (LCRR) administered by the United States Environmental Protection Agency (US EPA). If you receive one of these letters, it does **not** mean that there is lead in your drinking water. It only means that your service line may be lead or galvanized steel or is of unknown pipe material. Even if you have a lead or galvanized service line, lead concentrations in your drinking water are likely to be very low and have historically been below the EPA maximum action level of 0.010 mg/L.



**Lead:** Non-magnetic, silver-gray color that easily scratches with a coin.



**Copper:** Non-magnetic, color of a copper penny.



**Galvanized Steel:** Magnetic, dull gray color.



**Plastic:** Non-magnetic, white or black rigid pipe.



**Brass:** Non-magnetic, color varies from silvery yellow to reddish brown.

The City adds a corrosion inhibitor to prevent lead from leaching out of the pipe into the water. This process has proven to be very effective at keeping lead levels in drinking water very low. We regularly test homes with known lead service lines. Results typically show no or very little lead concentrations. Homes built after January 1991 do not have lead service lines since that is when Pennsylvania banned the use of lead in drinking water piping. Homes built in the 1920 to 1945 time frame have a higher likelihood of having lead or galvanized piping, unless the service line has been replaced in the last several decades.

If you receive a "lead status unknown" letter, this means the City does not have information on your service line material. You can assist with determining the material of the service line coming into your home by following the instructions on the City's website at [bethlehem-pa.gov/Water-Sewer-Resources/Public-Information/Lead-Service-Lines](http://bethlehem-pa.gov/Water-Sewer-Resources/Public-Information/Lead-Service-Lines) and submitting the form at the "Click to Open Form" link under the picture of material types.

If you have any questions about your service line material, email us at [leadserviceline@bethlehem-pa.gov](mailto:leadserviceline@bethlehem-pa.gov) or call the Bethlehem Water Lab at 610-865-7144.

## 2025 City of Bethlehem Real Estate Tax Bills

Property tax bills were mailed out in early January. Please note, as per Pennsylvania tax collection law Section 7. Effect of Failure to Receive a Tax Notice (Purdon's Statute 72, Section 5511.7), **"Failure to receive notice shall not relieve any taxpayer from the payment of any taxes imposed by any taxing district, and such taxpayer shall be charged with their taxes as though they had received notice."**

Therefore, if you did not receive your real estate tax bill, please contact the City of Bethlehem Tax Bureau at 610-865-7022 Option 5 to request a duplicate copy.

### ESCROW ACCOUNTS

If your mortgage company or bank pays your taxes through an escrow account, it is your responsibility to make sure that your mortgage company receives the bill. You are ultimately responsible for any late payment penalties added to your bill, even if your account is paid through an escrow account. Make sure your lender has the correct information to avoid unwanted penalties!

All 2025 property taxes unpaid as of **December 31, 2025**, will be turned over to a collection agency.

**donegal square**

**40** FORTY YEAR ANNIVERSARY 1985 2025

*daichead blain, ag comhair agus ag tás 40 years and growing!*

**The Bethlehem Star** PENDANT COLLECTION

**ShanOre** BETH HANDCRAFTED JEWELRY

**MIDNIGHT STAR™**

**14K GOLD VERMEIL COLLECTION**  
Available in four colors.

**RINGS**  
Available in whole sizes 5 – 10

**MIDNIGHT STAR™**

**GOLD VERMEIL CLEAR**

**534 MAIN STREET  
BETHLEHEM, PA 18018  
610.866.3244  
DONEGALSQUARE.COM**

## ADOPT-A-ROAD PROGRAM

The City of Bethlehem offers a meaningful way for residents, community groups and local businesses to contribute to the environment through its Adopt-A-Road program. This initiative invites volunteers to contribute to maintaining a specific section of roadway, often a two-mile stretch, by committing to regular scheduled cleanups, typically at least four times a year, and typically for a two-year period. Participants help reduce litter, improve the appearance of public spaces and promote environmental stewardship throughout the City. The program not only helps keep Bethlehem's roads clean and attractive, but it also strengthens community spirit, encourages volunteerism and raises awareness about the importance of preserving public spaces. Through the Adopt-A-Road program, Bethlehem residents, along with City support, have a hands-on opportunity to make a lasting, visible impact on their local environment.

**For more information and/or to Adopt-A-Road, please contact our Bureau of Streets at [AskPW@bethlehem-pa.gov](mailto:AskPW@bethlehem-pa.gov).**



## URBAN FORESTRY

Do you have a tree you have been looking at getting removed for some time now but you are unsure what your first step is in getting the work done?

In the City of Bethlehem, you will need a permit and licensed arborist to work on any tree that is located within the public right of way or considered a street tree. These are both required for any type of tree work completed in the public right of way, such as pruning, removing, or planting a tree. A quick rule of thumb is that your tree falls within the public right of way if it is located between the curb and the sidewalk, also called a tree lawn or tree well. If there is no sidewalk in your area, you can contact the Forestry Department to confirm. It is always better to ask before taking action!

Once you find out whether you have a street tree or a private property tree, you can move forward from there. If the tree is on private property, the property owner does not need permission to arrange for further pruning, removal or planting.

If you find you do in fact have a street tree, download the street tree permit and licensed arborist list from the City of Bethlehem Urban Forestry page. From that list, contact the professional(s) listed and acquire quotes from the arborist(s) of your choosing. Once you have the licensed arborist squared away, you or the arborist will submit the street tree permit application for approval. The permit can be mailed into or dropped in person at Bethlehem City Hall. Please make sure all sections of the permit application are filled out completely for processing. If the permit is approved, you will be contacted to make arrangements for pickup, and you may schedule the work with your licensed arborist. Your permit will state the requirements for a replacement tree, the scope of work and any notes that need to be included.

**If you have any concerns or questions regarding a street tree or the permitting process, you may direct them to the Urban Forestry office. More information can be found at [bethlehem-pa.gov/Public-Works/Bureaus/Urban-Forestry](http://bethlehem-pa.gov/Public-Works/Bureaus/Urban-Forestry).**

## STREET SWEEPING SCHEDULE 2025

The Department of Public Works would like to announce that the Bureau of Streets began its street sweeping program on April 1, and it will run through October 31. During this time frame, street sweeping activities will operate every Tuesday through Friday between 7:30 am and 2 pm, on the posted roads throughout the City limits. The regularly scheduled street sweeping routes that are main thoroughfares in the City are posted with "No Parking" signs alerting motorists of parking restrictions for a given day and time. Vehicles must be kept off these posted streets to allow for effective street cleaning.

The City is divided into 88 sweeping districts that are not posted. The City tries to deploy three sweepers each day to run through these areas. Roads that are under 12 feet wide do not get swept.

**For a full route schedule, visit [bethlehem-pa.gov/public-works](http://bethlehem-pa.gov/public-works) and click on the "Street Sweeping Schedule" button.**

SEPTEMBER 2025						
S	M	T	W	T	F	S
	1	2	3	4	5	6
7	8	9	10	11	12	13
14	15	16	17	18	19	20
21	22	23	24	25	26	27
28	29	30				

OCTOBER 2025						
S	M	T	W	T	F	S
			1	2	3	4
5	6	7	8	9	10	11
12	13	14	15	16	17	18
19	20	21	22	23	24	25
26	27	28	29	30	31	

**Gray Indicates Sweeper Schedule for 1st and 3rd Thursdays and Fridays**

**Yellow Indicates Sweeper Schedule for 2nd and 4th Thursdays and Fridays**

# Recreation Programs and Events • Fall 2025/Winter 2026



Stay up to date on all City programs and events and learn more about rental facilities by visiting [www.bethlehem-pa.gov/Recreation](http://www.bethlehem-pa.gov/Recreation) or by scanning the QR code.

## BETHLEHEM'S 104TH ANNUAL

# HALLOWEEN PARADE

The 104th Annual Bethlehem Halloween Parade will be held on Sunday, October 26, at 2 pm. The rain date, if needed, will be Sunday, November 2, at 2 pm. The parade route begins on West Broad St. at 9th Avenue and continues east to Main Street and then south on Main to Spring Street. The parade will continue with its tradition of welcoming local schools, officials, community groups, marching bands, businesses, etc. to celebrate the Halloween season with us.



If you are interested in participating, please visit <https://docs.google.com/forms/d/1xll6EqowDn4c2OHWoS2Sk9wqCwcrOZNIJX14tbWTqdA/preview> or scan the QR code and complete the online registration form.

**Registrations are due by Friday, October 17, at 3 pm. Late submissions WILL NOT be accepted!**



The City of Bethlehem's Annual Trick or Treat Night will be held on **Friday, October 31, from 6 – 8 pm**. Please remember to turn your porch light on if you plan to participate.

## THE EARL E. SCHAFER BETHLEHEM MUNICIPAL ICE RINK



The Earl E. Schaffer Bethlehem Municipal Ice Rink, the Lehigh Valley's only outdoor Olympic-size rink, is located at 345 Illick's Mill Road (across from Memorial Pool). We offer private rink rental, public skate sessions, skating lessons and more. Season passes and gift certificates are available. Please visit [bethlehem-pa.gov/Recreation/Recreation-Activities/Ice-Rink](http://bethlehem-pa.gov/Recreation/Recreation-Activities/Ice-Rink) or scan the QR code for more information about our ice rink programming.



## WINTER ADULT BASKETBALL LEAGUE

We are excited to announce that our adult winter basketball league is back this year and will tip off on Monday, November 10. The league will have a six- to eight-game regular season and will include a playoff tournament in late February/early March. The games will be held at Boys and Girls Club of Bethlehem and will begin at 7 pm.

The entry fee is \$200 per team plus referee fees. Roster submission will be due by Friday, October 31. Visit [bethlehem-pa.gov/Recreation/Recreation-Activities/Adult-Basketball](http://bethlehem-pa.gov/Recreation/Recreation-Activities/Adult-Basketball) or scan the QR code for more information.



## TRAILS AND LINEAR PARKS

Whether you like to walk, bike or run, we have a place for you. Visit one of our trails or linear parks.

- **Monocacy Way Trail:** Travel along the beautiful Monocacy Creek from the Industrial Quarter to the Monocacy Recreational Complex at Memorial Pool.
- **Sand Island Trail (D&L Corridor):** Travel the Delaware and Lehigh Corridor to Allentown or Easton and beyond and experience the history of the Lehigh Canal.
- **South Bethlehem Greenway Linear Park:** Take a walk on the Southside of Bethlehem and stop by Saucon Park, the Skateplaza and play areas on the trail. In addition, enjoy the Southside Arts District displays and businesses along the way.
- **South Mountain Park:** Enjoy the trails in this beautiful park on Mountain Drive in the backyard of Lehigh University. In addition, bring a disc to play some golf while visiting the park.



*Your source for*  
**SUMMER FUN**

**B&B**  
CUSTOM POOLS

610.965.POOL • BBCUSTOMPOOLS.COM

DESIGN, INSTALLATION, SERVICE & RENOVATION. PATIOS, OUTDOOR KITCHENS, FIREPLACES & MORE

Who's 2023  
Who  
Lehigh Valley

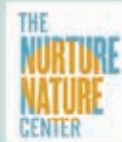
## LEHIGH VALLEY Sustainable Business PROGRAM

*All local businesses are invited to apply!*

- Fill out an application about how your business takes sustainability and climate action.
- Receive a window sticker, digital badge, and public recognition for your efforts.
- Share your commitment with customers who want to know what their dollars are supporting!

Learn more and apply!

Join our growing sustainable business network and learn how others are implementing effective and practical actions.



[www.nurturenaturecenter.org](http://www.nurturenaturecenter.org)



SERVING THE CITY OF BETHLEHEM SINCE 1977



COMMERCIAL • RESIDENTIAL • INDUSTRIAL

Container service 1-25 cubic yards

*Committed to the community, we ensure excellence, reliability, and a healthier environment for all.*

PO Box 106, Bethlehem, PA 18016  
610-868-6221 • [symons-sanitation.com](http://symons-sanitation.com)

# 2025 FALL YARD WASTE CURBSIDE PICKUP SCHEDULE

OCTOBER 13 – 24, 2025	
RECYCLING PICKUP DAY	YARD WASTE PICKUP DAY
October 13, 2025	October 13, 2025
October 14, 2025	October 14, 2025
October 15, 2025	October 15, 2025
October 16, 2025	October 16, 2025
October 17, 2025	October 17, 2025
October 20, 2025	October 20, 2025
October 21, 2025	October 21, 2025
October 22, 2025	October 22, 2025
October 23, 2025	October 23, 2025
October 24, 2025	October 24, 2025

### HERE ARE THE REQUIREMENTS:

- All materials must be placed **CURBSIDE** the night before your collection day.
- Only ONE pass-thru will be made for each street.
- All items must be in either **BROWN PAPER BAGS**, rigid containers of less than 30 gallons or bundled with string (no tape or rope).
- No items over 4 inches in diameter or 4 feet in length.
- Any materials in plastic bags will not be picked up.

**Materials accepted:** Leaves; small brush; hedge and shrub trimmings; and Christmas trees free of tinsel, decorations and lights. Christmas trees must not be in plastic bags.

**Materials NOT accepted:** Grass; hay; straw; tree stumps; root balls; soil; dirt; sod; mulch; bamboo; ornamental grass; pumpkins; cornstalks; acceptable materials not bagged, bundled or containerized; or items exceeding length, width or weight requirements.

# 2026 CURBSIDE CHRISTMAS TREE PICKUP SCHEDULE

JANUARY 5 – 16, 2026	
RECYCLING PICKUP DAY	CHRISTMAS TREE PICKUP DAY
January 5, 2026	January 5, 2026
January 6, 2026	January 6, 2026
January 7, 2026	January 7, 2026
January 8, 2026	January 8, 2026
January 9, 2026	January 9, 2026
January 12, 2026	January 12, 2026
January 13, 2026	January 13, 2026
January 14, 2026	January 14, 2026
January 15, 2026	January 15, 2026
January 16, 2026	January 16, 2026

All trees must be free of decorations, tinsel, lights and tree stands. Please place your tree at the curb the night before your designated pickup day. Trees in plastic bags will NOT be picked up.



Our state-of-the-art crematory is located within our Historic Bethlehem main building, where your loved one never leaves our care.

**Herron**  
Funeral Homes  
On-site Crematory

Where your loved one never leaves our care.

458 Center at Market Streets  
Bethlehem, PA 18018

---

1145 Lehigh Street  
Allentown, PA 18103  
610-866-0671

---

Demetrios J. Herron  
Connor J Herron  
Paula C. Herron  
Andrew F. Herron

Bethlehem, PA | Allentown, PA | [herronfuneralhomes.com](http://herronfuneralhomes.com)

# 2025 HOLIDAY CURBSIDE RECYCLING COLLECTION SCHEDULE

**City of Bethlehem**  
**610-865-7082**



**2025**  
**Holiday**  
**Collection**  
**Schedule**

## HOLIDAY SCHEDULE

### Holiday

New Year's Day	1/1
Memorial Day	5/26
Independence Day	7/4
Labor Day	9/1
Thanksgiving Day	11/27
Christmas Day	12/25

\*\*\*If a holiday falls on a weekday (Monday – Friday) and it's your normal pickup day, recycling will be picked up one day later for the remainder of the week.

JANUARY 2025						
S	M	T	W	T	F	S
			1	2	3	4
5	6	7	8	9	10	11
12	13	14	15	16	17	18
19	20	21	22	23	24	25
26	27	28	29	30	31	

APRIL 2025						
S	M	T	W	T	F	S
		1	2	3	4	5
6	7	8	9	10	11	12
13	14	15	16	17	18	19
20	21	22	23	24	25	26
27	28	29	30			

JULY 2025						
S	M	T	W	T	F	S
		1	2	3	4	5
6	7	8	9	10	11	12
13	14	15	16	17	18	19
20	21	22	23	24	25	26
27	28	29	30	31		

OCTOBER 2025						
S	M	T	W	T	F	S
			1	2	3	4
5	6	7	8	9	10	11
12	13	14	15	16	17	18
19	20	21	22	23	24	25
26	27	28	29	30	31	

FEBRUARY 2025						
S	M	T	W	T	F	S
						1
2	3	4	5	6	7	8
9	10	11	12	13	14	15
16	17	18	19	20	21	22
23	24	25	26	27	28	

MAY 2025						
S	M	T	W	T	F	S
				1	2	3
4	5	6	7	8	9	10
11	12	13	14	15	16	17
18	19	20	21	22	23	24
25	26	27	28	29	30	31

AUGUST 2025						
S	M	T	W	T	F	S
					1	2
3	4	5	6	7	8	9
10	11	12	13	14	15	16
17	18	19	20	21	22	23
24	25	26	27	28	29	30
31						

NOVEMBER 2025						
S	M	T	W	T	F	S
						1
2	3	4	5	6	7	8
9	10	11	12	13	14	15
16	17	18	19	20	21	22
23	24	25	26	27	28	29
30						

MARCH 2025						
S	M	T	W	T	F	S
						1
2	3	4	5	6	7	8
9	10	11	12	13	14	15
16	17	18	19	20	21	22
23	24	25	26	27	28	29
30	31					

JUNE 2025						
S	M	T	W	T	F	S
1	2	3	4	5	6	7
8	9	10	11	12	13	14
15	16	17	18	19	20	21
22	23	24	25	26	27	28
29	30					

SEPTEMBER 2025						
S	M	T	W	T	F	S
	1	2	3	4	5	6
7	8	9	10	11	12	13
14	15	16	17	18	19	20
21	22	23	24	25	26	27
28	29	30				

DECEMBER 2025						
S	M	T	W	T	F	S
	1	2	3	4	5	6
7	8	9	10	11	12	13
14	15	16	17	18	19	20
21	22	23	24	25	26	27
28	29	30	31			

Blue Indicates "A" Weeks

White Indicates "B" Weeks

## THEIS/CORNFELD RECYCLING CENTER

- 635 Illick's Mill Road
- Tuesday – Saturday, 10 am – 4 pm
- CLOSED Sunday and Monday

**Materials accepted:** Mixed office paper, junk mail, magazines/shiny paper, hard and soft cover books, cardboard, flat board, telephone books, scrap metals, aluminum, most appliances, plastics #1 through #7, glass bottles and jars, and cans.

**Please note:** We **CANNOT** accept pressurized tanks, propane tanks, dishwashers, batteries, paint cans (empty or full), electronics and plastic bags.

Please be advised of extreme temperature closings. During summer when the real feel temperature approaches 100 degrees, during winter months when the real feel temperature nears 0 or if there is lightning in the vicinity, the facility may close unexpectedly. Please plan your visits accordingly. Thank you for your patience and understanding.



## YARD WASTE DROP OFF

### Bethlehem Yard Waste Facility

- 1480 Schoenersville Road
- Tuesday – Saturday, 9 am – 3 pm
- CLOSED Sunday and Monday, and also during the months of December, February and March.

**Materials accepted:** Leaves (loose or in brown paper bags), small brush up to 4 inches diameter (no longer than 6 feet), hedge trimmings, garden plant residue, Christmas trees (free of ornaments, lights and tinsel).

**Materials NOT accepted:** Sod, grass clippings, tree stumps, hay/straw, plastic bags, soil/mulch, root balls, bamboo, ornamental grass.

**No dumping:** Dumping is illegal, and violators will be fined according to City Ordinances and PA DEP Guidelines.

**Please note:** All loads must be tarped when entering or exiting the facility.

**Loading service:** \$10 per cubic yard. Loading services end daily at 2:45 pm. Pickup trucks can no longer be self-loaded. There is a limit of three 30-gallon containers that may be self-loaded.

**Please note:** Materials may only be dropped off when the Center is open and operating. Only **QUALIFIED RESIDENTS** and property owners within the City of Bethlehem may drop off materials at the Yard Waste Facility. You must show a valid driver's license and compost card on every drop-off trip.



## Bethlehem Co-Op Market | #MoreThanAGroceryStore

Did you know there are plans to bring a full-service, community-owned grocery store to the north downtown area of Bethlehem? That means it is a store that is not owned by a big, impersonal company — but owned by our neighbors!

The Bethlehem Co-op Market — formerly known as the Bethlehem Food Co-Op — is set to open its brick-and-mortar store to all shoppers later this year. Although owned by its member-owners, the co-op is committed to making healthy food accessible to all.

In the meantime, the market's online store is up and open for business! Everyone is welcome to shop at [bethlehemcoopmarket.com/shop-online/](http://bethlehemcoopmarket.com/shop-online/). Check out the selection of groceries and co-op merchandise; there's no charge to shop online, and convenient curbside pick-up is available Monday – Friday.

Located at 250 E. Broad St., the completed market will feature all the departments you see in a regular grocery store: produce (both organic and conventionally grown), meats, fish and seafood, dairy and alternatives, dry grocery and wellness. Special features include a “from scratch” prepared foods section with hot foods and grab & go, a juice and coffee bar, and a well-stocked bulk foods section — buy as much or as little as you like, in your own container.

The co-op is owned by almost 1,650 households and organizations that have invested in bringing healthy, reasonably priced food options to Bethlehem. Anyone can join as a member-owner,

but the market will be open to all shoppers.

Why become a member-owner? They have a voice and a vote in how the store is run and enjoy special discounts when shopping locally at over 30 local Member Benefits Partners. When the store opens, member-owners will enjoy additional special discounts when shopping.

To assure the store opens on a solid financial footing and continues to thrive into the future, the co-op has undertaken a community investment fundraising campaign that includes loans from member-owners.



Want to get involved or learn more? Please visit [bethlehemcoopmarket.com](http://bethlehemcoopmarket.com) for project updates, co-op events in the community and details on how to become a member-owner or support the campaign. Join us in bringing this important new resource to our community!

A promotional poster for Oktoberfest at SteelStacks in Bethlehem, PA. The poster features a central graphic of a yellow beer mug with a blue cross and a banner that reads "Oktoberfest". Below this, it says "Presented by ABE". The event dates are "October 3-5 &amp; October 10-12". The website "steelstacks.org/oktoberfest" is listed at the bottom. On the right side, there is a framed photograph of a man and a woman wearing blue beer hats and holding glasses of beer. The background of the poster has a pattern of orange and yellow leaves.

# E.F. Butz Agency

*For All of Your Insurance Needs*

*Servicing the Lehigh Valley and surrounding areas since 1946*

**HOME | LIFE | AUTO | COMMERCIAL**

**3333 W Emmaus Avenue | Emmaus | 610 965-2824**

**efbutzins.com | efbutzins@rcn.com**

ON-SITE CREMATORY AT OUR LINDEN STREET LOCATION



*A lifetime of memories, a lifetime of service.*



**Serving the Lehigh Valley for Generations**

**Cantelmi Long Funeral Home**

500 Linden St., Bethlehem, PA 18018

610-866-8059

Dino P. Cantelmi, Supervisor

**Cantelmi Funeral Home, PC**

1311 Broadway, Fountain Hill, PA 18015

610-866-2323

Justin A. Keiper, Supervisor

**CANTELMIFUNERALHOME.COM**





BETHLEHEM AREA  
PUBLIC LIBRARY

## Your Public Library Resources

The Bethlehem Area Public Library's (BAPL's) website, [bapl.org](http://bapl.org), lists storytimes and tons of other events, and allows you to search for a book from the comfort of home. It also has research and learning tools you may not be aware of!

Check out these **two new updates** to the offerings found at [bapl.org](http://bapl.org) — free to use with your library card!

### LinkedIn Learning

BAPL is pleased to offer LinkedIn Learning as a new resource, available for free with your library card. This online platform provides access to a wide range of expert-led courses designed to help you develop skills for work, school or personal growth.

Whether you're looking to advance in your career, learn something new or improve existing skills, LinkedIn Learning offers a variety of courses in business, technology, creative fields and personal development. Earn Professional Certificates in a variety of topics, set goals or challenges for yourself or seek out one of the many well-being tools.



LEARNING



LinkedIn Learning includes courses in areas such as management, entrepreneurship, communication skills, data science, graphic design, video editing, time management and more. To get started, visit our library's website, navigate to the LinkedIn Learning database under Research and Learning, and log in with your library card number and pin.

**Contact a librarian for more information or help with logging in.**



# FASTSIGNS

## ALLENTOWN

**Your one stop shop for all things  
signs and graphics related.**

**610-434-7353 219@fastsigns.com**  
**Covering Eastern PA and NJ**

## LOSE WEIGHT. FEEL GREAT.

Holistic, all natural, weight-loss  
program designed to return your  
body to its natural weight.



**Dr Augello's  
Health & Body**

**888-Burn-Fat  
888BurnFat.net**



**BEFORE**



**AFTER**

### JSTOR (more from BAPL)

A scholarly tool normally only found at colleges and universities is now available for anyone to use at the Bethlehem Area Public Library. It's a digital library called JSTOR — short for Journal Storage — and it offers access to millions of articles in thousands of scholarly journals.

BAPL is one of the few public libraries that offers this resource, giving all its users opportunities to access scholarly content, including journal articles, primary sources and much more. Students, professors, researchers and other curious minds who are looking for accurate articles and sources about a specific subject are among those who will benefit significantly from JSTOR. This database allows members of the library to access academic-level resources. And it enables students of all ages to access important and accurate information.

We hope library users will take advantage of these amazing resources that are right at their fingertips!



Check our calendar at [bapl.org](http://bapl.org) for an updated list of events — there is always something going on at the library!

# REACH NEW HEIGHTS!

Beth-Allen Ladder and Equipment is the number one place in the Lehigh Valley for ladders, scaffolding, ladder racks, truck and van equipment, job site storage chests, fall protection, roof ladders, cable ladders, brakes, and benders.



**Beth-Allen  
Ladder &  
Equipment**  
INC.

2124 W. Broad St. • Bethlehem

610-866-4242

**BETHALLENLADDER.COM**



BRANDS  
WE CARRY





## KEEPING PEOPLE WARM SINCE 1982

Your destination to complete your fireplace upgrade.  
Our knowledgeable sales staff is here to help guide  
you through the process.

*Kring's offers sales, service, and install on gas, wood,  
pellet fireplaces, stoves and inserts.*

**610.224.5050**

834 Route 100 North, Bechtelsville  
4405 Pennsylvania Dr., Schnecksville  
385 E. Roseville Rd., Lancaster

**KringsOnline.com**

**Kring's**  
**Hearth & Home**

HIC# PA 065759

  
**VERMONT  
CASTINGS™**

**HEAT & GLO**  
No one builds a better fire

**QUADRA-FIRE**  
NOTHING BURNS LIKE A QUAD

 **MONESSEN**

**HARMAN**  
BUILT TO A STANDARD, NOT A PRICE



# BETHLEHEM AREA SCHOOL DISTRICT

## A Message to the Bethlehem Community:

As we begin a new school year, I am honored to continue serving as the Superintendent of the Bethlehem Area School District (BASD). BASD is more than a school district; it's a reflection of the Bethlehem community itself. The rich history, vibrant diversity and shared values of our city are present in each of our 22 schools.

Over the past year, we've celebrated student achievements, recognized the unwavering dedication of our staff and felt the support of our alumni and community partners. Through the BASD eNews and our social media platforms, we've continued sharing the inspiring stories that remind us why we're #BASDproud to say we are #BuiltByBethlehem.

Looking ahead, our mission remains clear: to provide meaningful opportunities for every student to grow, learn and succeed. Whether through innovative academic programs, arts and music, athletics or leadership experiences, we are committed to offering something for every learner in our district.

We invite you to take part in the exciting events that make BASD so special — from school open houses and football games to community parades and student performances. Your support and presence truly make a difference.


To stay connected and informed about what's happening across our schools, visit us at [www.basdschools.org](http://www.basdschools.org). Let's continue working together to ensure that every student has the opportunity to thrive and that the future of Bethlehem is brighter than ever.



Dr. Jack P. Silva,  
Superintendent of the Bethlehem Area School District



*D.E.*  
**CRESSMAN**  
INSURANCE AGENCY INC.  
— EST. 1956 —




*Our Legacy* *D.E.* *Your Future*

AUTO • HOME • LIFE • BUSINESS

610-433-1568 | [ChooseCressman.com](http://ChooseCressman.com)

*Anything but ordinary.*



decorative & architectural  
hardware...what are  
*your* cabinets wearing?

**KNOBS 'N KNOCKERS**  
If you can dream it, we can provide it.  
610.419.2548 • [knobsnknockers.com](http://knobsnknockers.com)  
512 Main Street, Bethlehem PA  
and  
Shop 22, *Peddler's Village* • Lahaska, PA

Lehigh University Art Galleries presents

# HERE AND NOW

100 Years of LUAG, 100 Local Artists

September 2, 2025 – May 22, 2026



Clockwise, from top left:  
Joy Echevarria  
Charles Stonewall  
Lydia Pansis  
Devyn Briggs



In honor of our centennial milestone, LUAG is thrilled to present a juried exhibition of 100 area artists showcasing the vibrant array of artistic practices thriving in the Lehigh Valley today. From **September 2, 2025 through May 22, 2026**, the 100 selected works in this landmark exhibition will transform our galleries in a true celebration of LUAG's past, present, and future.

Join us on **Friday, September 19, 2025 from 5:30–8:30pm** for **Light Up LUAG!** Meet the artists and enjoy a live DJ, artmaking experiences, and more. Free and open to the public. More info and RSVP at [LUAG.org/events](http://LUAG.org/events).

420 E. Packer Avenue  
Bethlehem, PA  
(Inside Zoellner Arts Center)  
LUAG IS FREE AND OPEN TO ALL



Scan here or visit  
[www.luag.org](http://www.luag.org)  
for more information

100  
years of LUAG

LUAG  
Lehigh University  
Art  
Galleries



Not just your  
**PARENTS'**  
**INSURANCE**  
anymore!

ROBERTSON INSURANCE  
GROUP

Erie  
Insurance

# SOUTHSIDE ARTS DISTRICT

## *Fall & Winter 2025 Schedule*

SEPT 5  
OCT 3  
NOV 7  
DEC 5

### FIRST FRIDAYS

Enjoy community art exhibitions, live music, performances, special events, networking, dining deals and more around the SouthSide Arts District.



OCT  
18

### CHILIFEST

12 - 4 PM

Join us for the 29th year of ChiliFest in the SouthSide Arts District! Walk the downtown and sample a variety of chilis from local restaurants and shops.

TICKETS: \$35

NOV  
29

### CHRISTMAS TREE LIGHTING

5 - 6 PM

Rock around the Christmas Tree with us on the Greenway. Enjoy cocoa, cookies, and live Christmas tunes.

DEC 6  
& 13

### NAUGHTY OR NICE COCKTAILS & COOKIES CRAWL

*MERRIMENT, MISCHIEF, & MMMM!*

Dress in your silliest holiday gear and join us for a holly jolly cocktail crawl full of festive drinks and delicious Christmas cookies!

TICKETS: \$35  
AGES 21+ ONLY



SOUTHSide  
**ARTS  
DISTRICT**



@SOUTHSIDEARTSDISTRICT | WWW.SOUTHSIDEARTSDISTRICT.COM

#SOUTHSIDEPROUD #SOUTHSIDEARTSDISTRICT

## Downtown Bethlehem Association & Bethlehem Chamber of Commerce

# EVENTS



### HARVEST FEST

**October 11, 12 - 5 pm**

Get ready for a reimagined Harvest Fest featuring two delicious tasting trails with cozy fall flavors from local merchants. Enjoy a variety of kid-friendly activities like face painting and pumpkin painting. Live performances will fill the air with music and energy, making this a festive celebration for all ages.



### HOLIDAY COCKTAIL TRAIL

**November 15 & 22, 12 - 5pm**

Ring in the holiday season early with our annual Historic Bethlehem Holiday Cocktail Trails! On November 15 and 22 from 12 pm to 5 pm, your passport will be your ticket to visit stores and restaurants throughout Historic Downtown Bethlehem for various delicious holiday cocktail samples.

### CHRISTMAS CITY VILLAGE

**November 15 - December 22,  
Friday & Saturday, 12 - 8 pm, Sunday, 12 - 6 pm**

Shop charming, holiday-themed wooden huts that are filled with unique gifts. Visiting the huts is FREE and open to the public!

### CHRISTMAS TREE LIGHTING CEREMONY

**November 28, 4:30 pm**

The 2025 Christmas City Tree Lighting Ceremony will be held on **November 28 at 4:30 pm** at Bethlehem's Payrow Plaza. There will be a varied lineup of entertainment and a special visit from Santa Claus! FREE cookies and hot chocolate will be offered for everyone.



### LIVE ADVENT CALENDAR

**December 1 - 23, 5:30 pm**

Feel the Magic with the Historic Bethlehem Live Advent Calendar, the only one of its kind in the country and perhaps the entire world! The calendar will kick off its 17th year on December 1. This unique, free, family-friendly event takes place every night at 5:30 pm until December 23 at the Sun Inn Courtyard. This year, we have partnered again with Touchstone Theatre to bring you a one-of-a-kind immersive experience.



[LehighValleyChamber.org/Bethlehem](https://LehighValleyChamber.org/Bethlehem)

# Touchstone Theatre

*is celebrating Bethlehem and you're invited!*



## UnBound Year-Round

**Our year long series of community-centric arts-infused events. Come together and enjoy art of all kinds, everywhere, for everyone.**

## Christmas City Follies

**Our theatrical extravaganza made from scratch each and every December. This one-of-a-kind homegrown holiday variety show has something for all!**

**For more information visit [touchstone.org](http://touchstone.org) | 321 East 4th St. Bethlehem, PA 18015**



THE HISTORIC BETHLEHEM

## ROSE GARDEN

Established in 1931, The Historic Bethlehem Rose Garden Park is one of Bethlehem's most beautiful urban parks. Volunteers have been working in the Rose Garden since 2020 to maximize this green space and expand the ecosystem in line with the City environmental concerns. The garden now includes native plants, pollinator-friendly perennials, annuals, trees and the famous roses.

### Help Wanted!

Volunteers are essential to maintaining the Rose Garden. No experience is necessary, and there is no commitment requirement. We offer community service hours for students and welcome local organizations, scouting troops and interested individuals. Volunteers start work in the garden in March and continue through the following months until the frost. Interested parties may email [bjkozero@aol.com](mailto:bjkozero@aol.com) with questions or simply drop by the Rose Garden on a Saturday morning during group work hours.

You may also donate to help buy flowers for the Rose Garden by contacting the non-profit Mount Airy Neighborhood Association ([mana18018.org](http://mana18018.org)), which oversees the volunteer efforts.

## Love Letters to Bethlehem



Whether you're raising a family, pursuing a career or establishing a business, Bethlehem welcomes you to explore, stay and play any time of year! From charming neighborhoods to world-class amenities and historic destinations, you'll find the perfect balance of vibrant downtowns, a thriving economy and unique experiences. Scan the QR code to watch a short film showcasing Bethlehem's unique small businesses and the passionate owners behind them!

**Visit [bethlehempa.org/love-letters-to-bethlehem](http://bethlehempa.org/love-letters-to-bethlehem) for more!**

**Bethlehem Chamber**  
GREATER LEHIGH VALLEY CHAMBER OF COMMERCE





**Holiday Open Houses!**

Select Weekends, November through January  
Visit our website for more info:  
[www.lkvmodelrailroad.com](http://www.lkvmodelrailroad.com)

**Lehigh & Keystone Valley Model Railroad Museum**  
705 Linden St., Bethlehem, PA 18018  
Phone: 610-868-7101 Email: [lkvmrrc@gmail.com](mailto:lkvmrrc@gmail.com)




**2025 Bethlehem Halloween Parade Registration**

Bethlehem's 104th Annual Halloween Parade will be held on Sunday, October 26, 2025 at 2:00 PM. The rain date will be Sunday, November 2, 2025 at 2:00 PM. The parade route (approximately 1.5 miles) begins on 10th-16th Avenues and Broad St. and travels East on Broad St. and then South on Main St., concluding at Main and Spring Streets.

Registration is due by Friday, October 17, 2025.  
(NO LATE SUBMISSIONS WILL BE ACCEPTED!)



Participants will be notified by email of their placement in the parade by Wednesday, October 22, 2025.

# The Bethlehem Fine Arts Commission

bringing fineARTS to the community



**CITY HALL, ROTUNDA GALLERY SHOWS:  
FALL 2025/WINTER 2026**

## Lois Schlachter

- *Abstract Painting*: August 17 – September 23  
Artist Reception: August 17, 2 – 4 pm

## Will Hübscher

- *Photography*: September 29 – November 4  
Artist Reception: October 5, 2 – 4 pm

## BFAC Curated Exhibition:

### Frank "Wyso" Wysochansky (curated by Steven Lichak)

- *Paintings*: November 9 – December 19  
Artist Reception: November 9, 2 – 4 pm

## Steven Landis

- *Photography*: January 7 – February 13  
Artist Reception: January 11, 2 – 4 pm

## 4 Realistic Painters: James A. DePietro, Jack Dickerson, Vi Herron and Keith Vogrin

- *Paintings*: February 20 – March 27  
Artist Reception: February 22, 2 – 4 pm



**NOTE:** The Rotunda will be closed to visitors on Election Day (November 4).





# Luminaria Night

December 13, 2025

NewBethany.org

*Be the light*  
IN YOUR NEIGHBOR'S  
**DARKEST HOUR**

**Visit our website to:**

- Order your luminaria kits (now available)
- Sign up for student volunteer hours
- Give \$40 in honor of our 40th Anniversary



Scan to Learn More



**ZOELLNER  
ARTS CENTER**  
LEHIGH UNIVERSITY



[zoellnerartscenter.org](http://zoellnerartscenter.org)

420 E. Packer Ave. Bethlehem, PA • [inzactix@lehigh.edu](mailto:inzactix@lehigh.edu)

**FREE** event parking attached to center

Programs subject to change



**MARK MORRIS DANCE GROUP**  
AN EVENING OF DANCE TO THE  
MUSIC OF BURT BACHARACH  
FRI OCT 17



**PHILHARMONIA ORCHESTRA**  
+ MARIN ALSOP  
SUN OCT 26



**DON'T LET THE PIGEON DRIVE  
THE BUS! THE MUSICAL**  
SAT NOV 1



**SCOTT BRADLEE'S  
POST MODERN JUKEBOX**  
THU NOV 13



**VIENNA BOYS CHOIR**  
YULETIDE PROGRAM  
FRI DEC 19



**SEÁN HEELY'S  
CELTIC CHRISTMAS**  
SAT DEC 20



**CITY OF BETHLEHEM**

10 East Church Street • Bethlehem, PA 18018

ECRWSS EDDM  
Postal Customer

PRSRT STD  
US POSTAGE  
PAID  
LEHIGH VALLEY, PA  
PERMIT NO 121

*Feel good about  
your plumber.*

**We are the Lehigh Valley's  
expert in plumbing, water  
heaters, drain cleaning, pipe  
repairs and roofer service.**

Fast, clean, quality service with fair  
upfront prices. That's our promise to you!

**ROBINSON  
PLUMBING**



**RobinsonPlumbing.com**

**610-351-9889**

Master LIC#208 Reg #PA024396



**Sewer Line  
Inspections**



**Water Heater  
Services**



**Water Softener/  
Water Treatment**



**Well Pumps**



**Sump Pumps**



**Drain Cleaning**



**Sewer Line Service**



**Water Line Repair**



**Gas Line  
Repair/Install**