

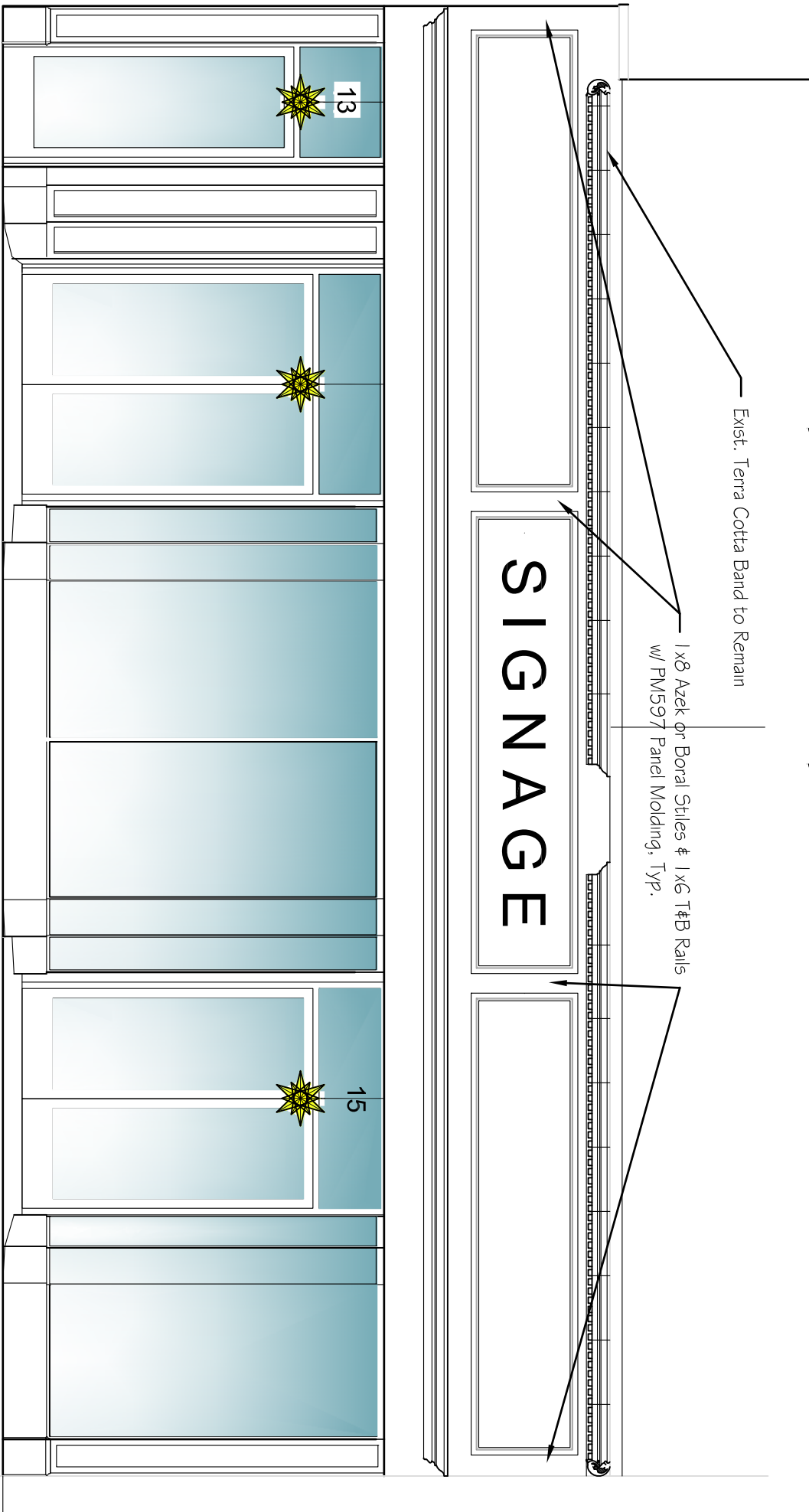
Proposed Entry Plan
 3/8" = 1'-0"

| | | |
|---|----------------|----------|
| 1 | DRAWN BY: | CLN |
| | CHECKED BY: | CU |
| | DATE: | 11.24.25 |
| | REVISION DATE: | |



Proposed Alteration
 13-15 E 3rd STREET
 BETHLEHEM, PA 18015

Artefact, Inc.
 CHRISTINE USSLER, AIA
 26-28 EAST THIRD STREET
 BETHLEHEM, PA 18015
 610.861.0235 PHONE
 610.861.0275 FAX



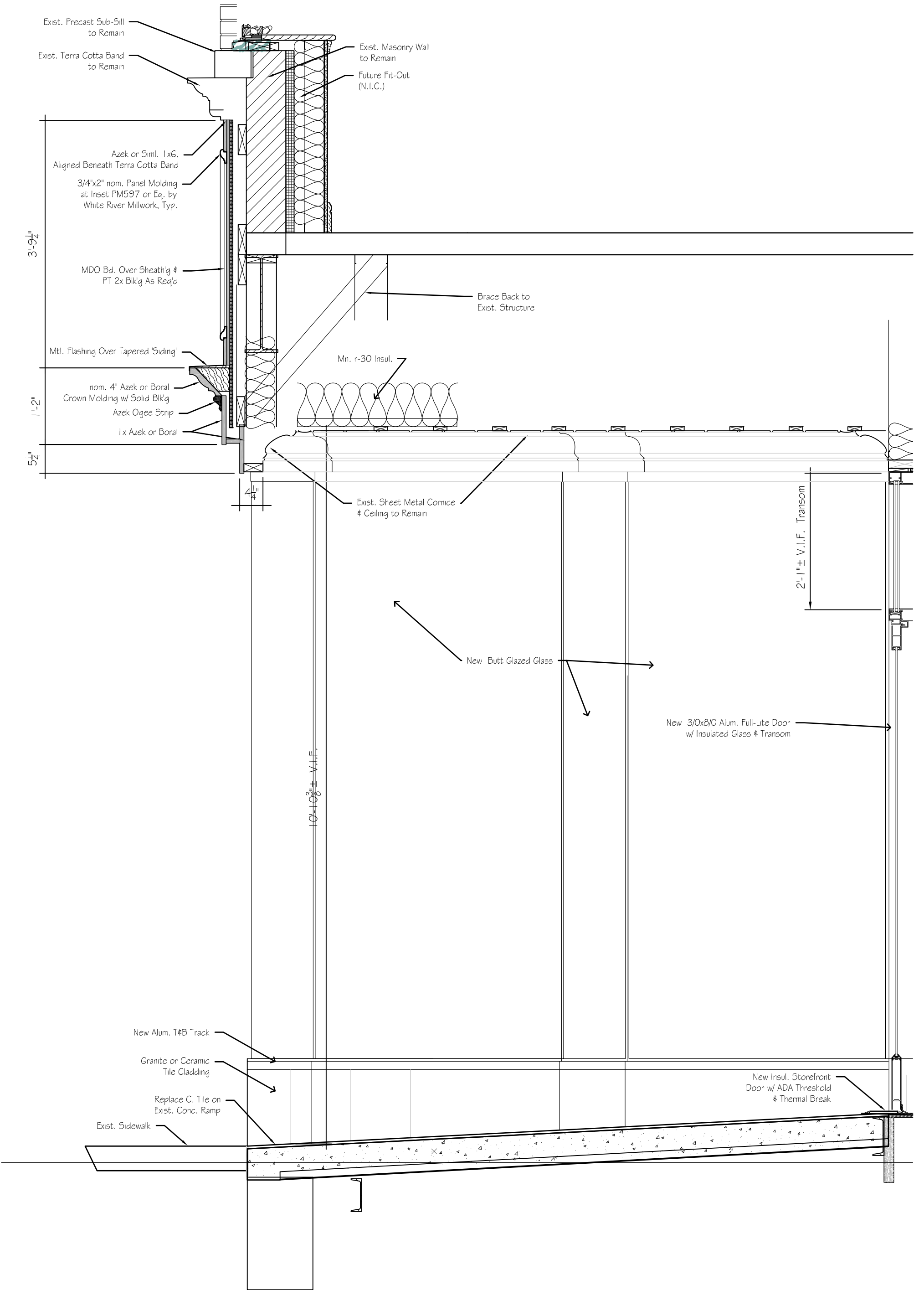
Proposed Entry Elevation
 $\frac{3}{8} = 1'-0"$

| | | |
|----------|----------------|----------|
| 2 | DRAWN BY: | CLN |
| | CHECKED BY: | CU |
| | DATE: | 11.24.25 |
| | REVISION DATE: | |



Proposed Alteration
 13-15 E 3rd STREET
 BETHLEHEM, PA 18015

Artefact, Inc.
 CHRISTINE USSLER, AIA
 26-28 EAST THIRD STREET
 BETHLEHEM, PA 18015
 610.861.0235 PHONE
 610.861.0275 FAX



| | | |
|----------|----------------|----------|
| 3 | DRAWN BY: | CLN |
| | CHECKED BY: | CU |
| | DATE: | 11.24.25 |
| | REVISION DATE: | |

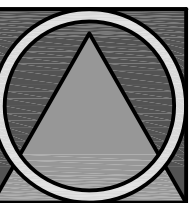


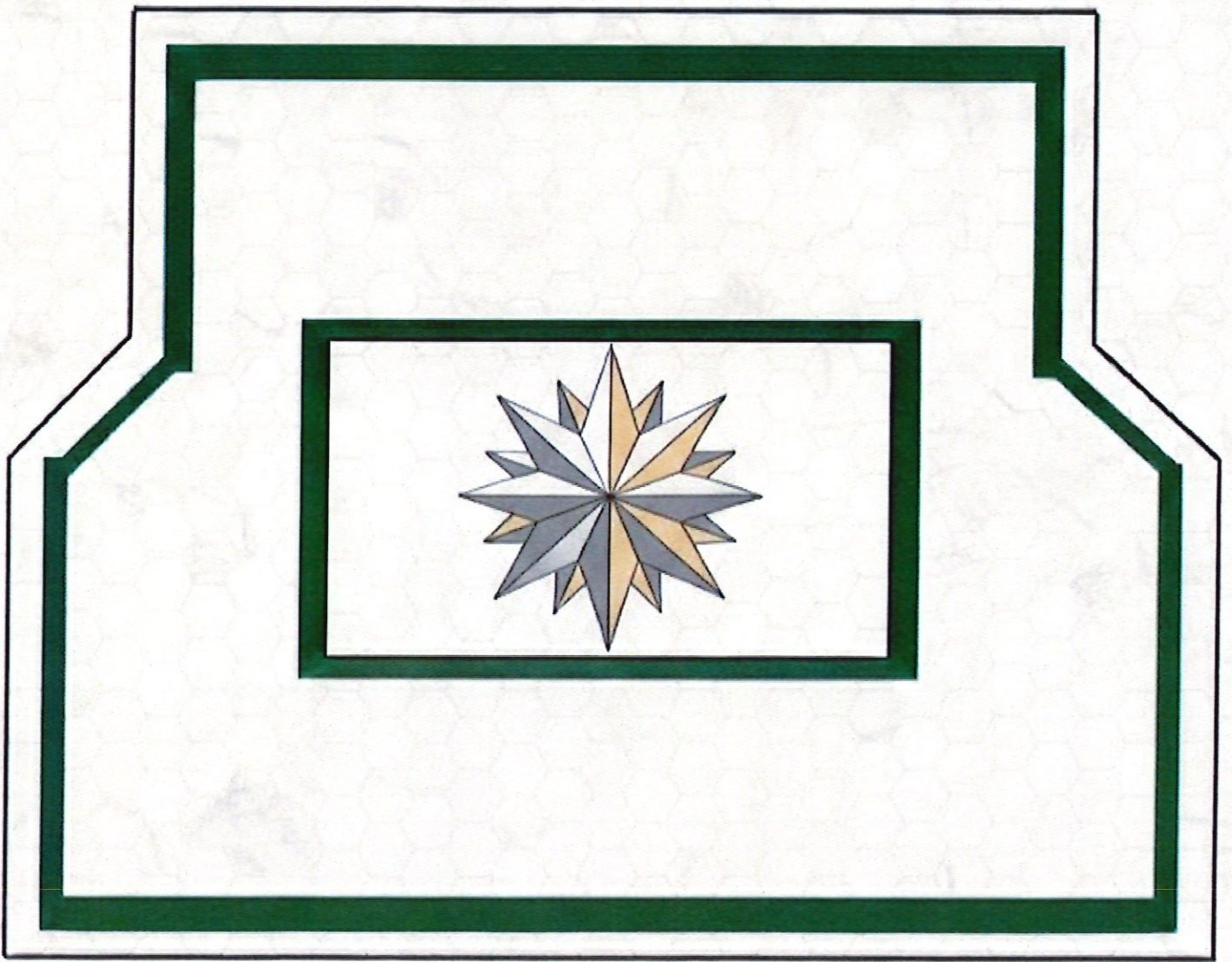
Proposed Alteration

13-15 E 3rd STREET
BETHLEHEM, PA 18015

Artefact, Inc.

CHRISTINE USSLER, AIA
26-28 EAST THIRD STREET
BETHLEHEM, PA 18015
610.861.0235 PHONE
610.861.0275 FAX







Orbbase Lighting Superior Moravian Star Hanging Light - Indoor/Outdoor Bronze Clear Ripple

\$546.00
\$191.10 65% OFF

★★★★★

Availability: In stock

1

ADD TO CART

🚚 Shipping all over the world 🇺🇸 Real guarantee ↩️ 7 days without reason to return

Guaranteed SAFE Checkout

VISA MasterCard AMERICAN EXPRESS DISCOVER NETWORK Powered by stripe SECURE SITE AES-256bit PayPal

PRODUCT DETAILS

Save space and provide beautiful, practical illumination inside or outside with the Orbbase Lighting Superior Moravian Star Hanging Light - Indoor/Outdoor Bronze Clear Ripple available at Orbbase Lighting. Add a unique and whimsical sparkle to your space with our perennial favorite Superior Moravian Star Hanging Lights. This outdoor hanging star pendant light comes with Clear Rippled or White glass.

- **Actual Size:** 18"Hx18"Wx18"D
- **Backplate/Canopy Size:** 5"W
- **Bulb Base:** US Medium-E26
- **Chain Length:** 36
- **Color:** Bronze / Clear Ripple
- **Cord/Wire Length:** 72
- **Dimmable:** Yes
- **Indoor-Outdoor:** Yes
- **Material:** Glass
- **Max Bulb Wattage:** 60
- **Number of Lights:** 1
- **Overall Height Max:** 54.5
- **Overall Height Min:** 22
- **Safety Rating:** Damp
- **Weight:** 10